



Project: SEC 5-T5N-R66W  
Site: Boomerang 21-5  
Well: Boomerang 12C-6-M  
Wellbore: OH  
Design: Plan #1

SECTION DETAILS									
MD	Inc	Azi	TVD	+N/-S	+E/-W	Dleg	TFace	VSect	Target
0.00	0.00	0.00	0.00	0.00	0.00	0.00	0.00	0.00	
300.00	0.00	0.00	300.00	0.00	0.00	0.00	0.00	0.00	
740.00	8.80	66.65	738.27	13.37	30.96	2.00	66.65	-31.41	
6477.15	8.80	66.65	6407.89	361.24	836.78	0.00	0.00	-848.82	
7574.97	90.61	268.01	7134.00	380.45	198.80	9.00	-158.38	-211.89	
15703.32	90.61	268.01	7047.00	97.83	-7924.17	0.00	0.00	7915.99	PBHL

PROJECT DETAILS: SEC 5-T5N-R66W  
Geodetic System: US State Plane 1983  
Datum: North American Datum 1983  
Ellipsoid: GRS 1980  
Zone: Colorado Northern Zone  
Colorado Northern Zone  
System Datum: Mean Sea Level

DESIGN TARGET DETAILS

Name	TVD	+N/-S	+E/-W	Northing	Easting	Latitude	Longitude	Shape
PBHL	7047.00	97.83	-7924.17	1401487.57	3185949.93	40.4335550	-104.8320270	Point
- plan hits target center								
PLP	7134.00	371.61	198.20	1401825.13	3194069.90	40.4343100	-104.8028490	Point
- plan misses target center by 8.82ft at 7575.88ft MD (7133.99 TVD, 380.42 N, 197.89 E)								

CASING DETAILS

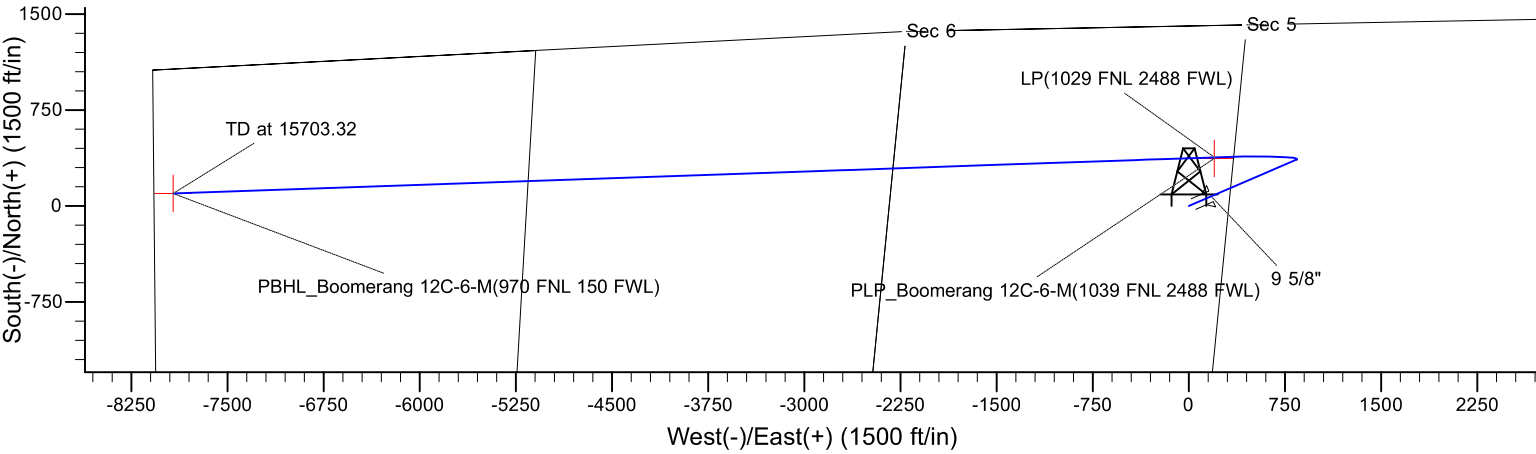
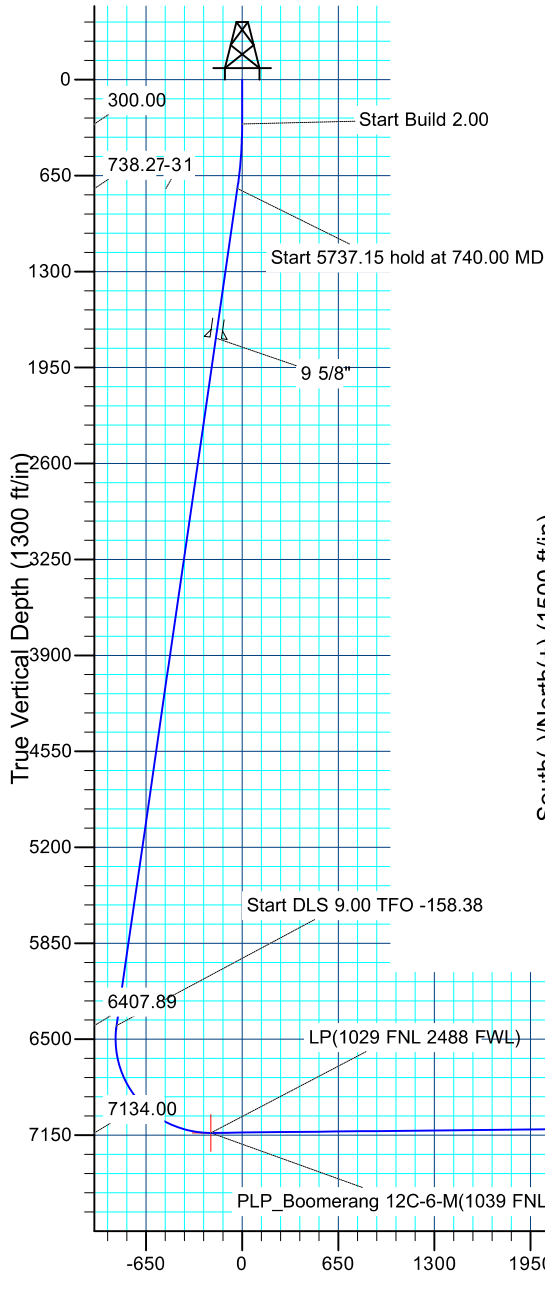
TVD	MD	Name	Size
1750.00	1763.78	9 5/8"	9.625

T

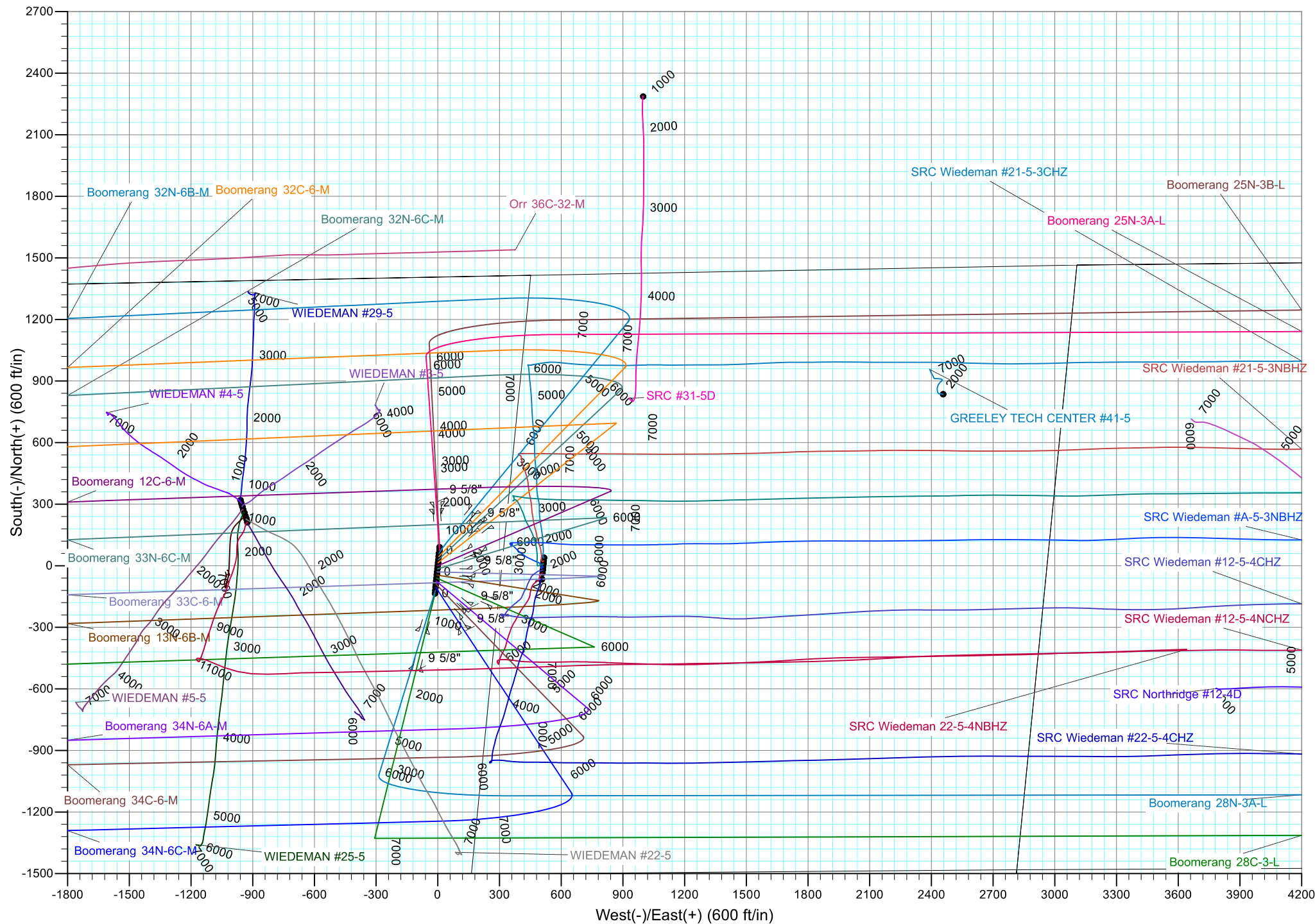
M

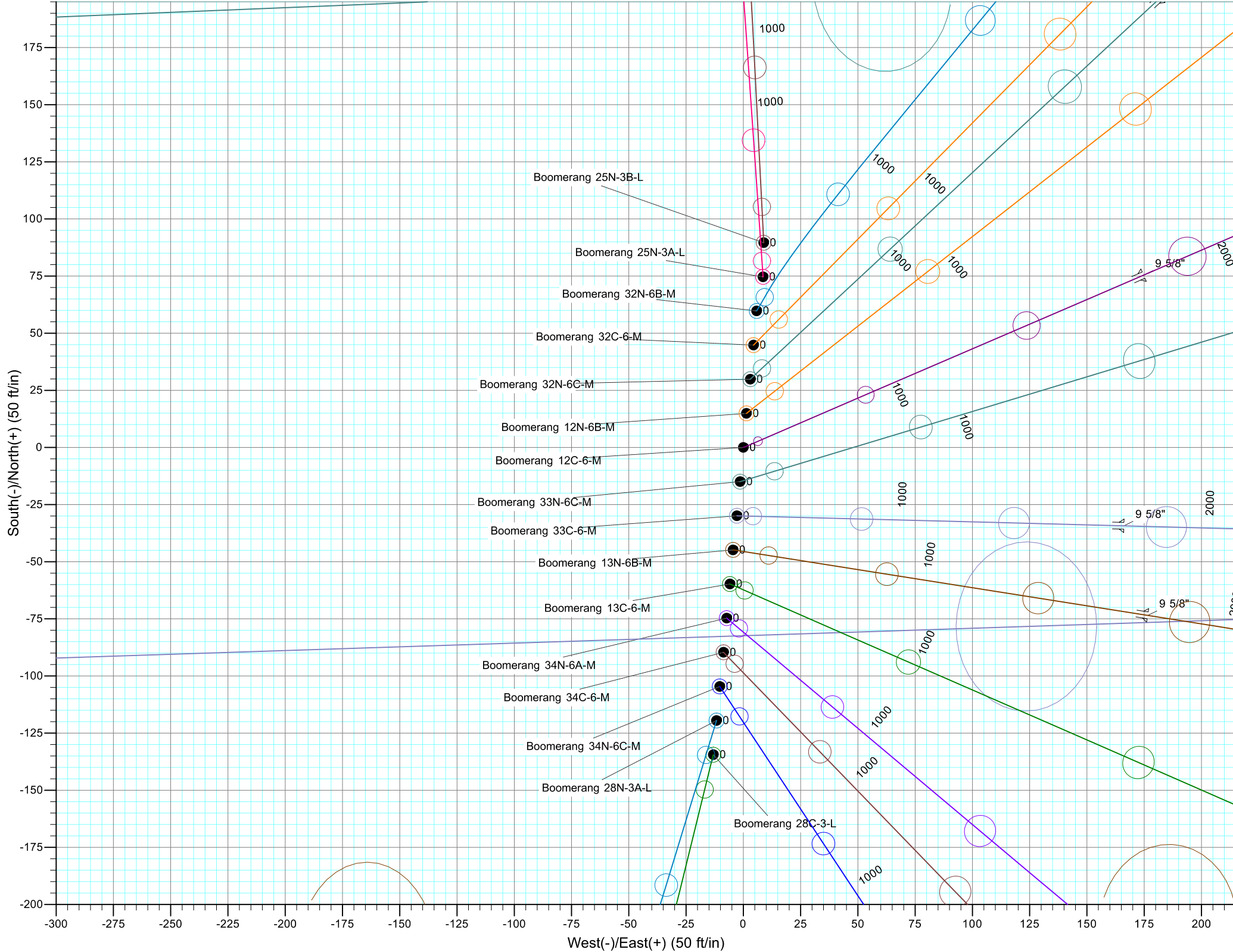
Azimuths to True North  
Magnetic North: 8.26°

Magnetic Field  
Strength: 52430.0snT  
Dip Angle: 66.88°  
Date: 4/1/2017  
Model: IGRF2015



Vertical Section at 268.01° (1300 ft/in)







# **Synergy Resources Corporation**

**SEC 5-T5N-R66W**

**Boomerang 21-5**

**Boomerang 12C-6-M**

**OH**

**Plan: Plan #1**

## **Standard Planning Report**

**05 April, 2017**

<b>Database:</b>	EDM 5000.14 Single User Db	<b>Local Co-ordinate Reference:</b>	Well Boomerang 12C-6-M
<b>Company:</b>	Synergy Resources Corporation	<b>TVD Reference:</b>	GL 4770+KB 20 @ 4790.00ft
<b>Project:</b>	SEC 5-T5N-R66W	<b>MD Reference:</b>	GL 4770+KB 20 @ 4790.00ft
<b>Site:</b>	Boomerang 21-5	<b>North Reference:</b>	True
<b>Well:</b>	Boomerang 12C-6-M	<b>Survey Calculation Method:</b>	Minimum Curvature
<b>Wellbore:</b>	OH		
<b>Design:</b>	Plan #1		

<b>Project</b>	SEC 5-T5N-R66W		
<b>Map System:</b>	US State Plane 1983	<b>System Datum:</b>	Mean Sea Level
<b>Geo Datum:</b>	North American Datum 1983		
<b>Map Zone:</b>	Colorado Northern Zone		

Site		Boomerang 21-5			
Site Position:		Northing:	1,401,541.68 ft	Latitude:	40.4335360
From:	Lat/Long	Easting:	3,193,882.83 ft	Longitude:	-104.8035290
Position Uncertainty:	3.28 ft	Slot Radius:	13.200 in	Grid Convergence:	0.45

Well	Boomerang 12C-6-M					
Well Position	+N/-S	-89.64 ft	Northing:	1,401,451.97 ft	Latitude:	40.4332900
	+E/-W	-8.91 ft	Easting:	3,193,874.62 ft	Longitude:	-104.8035610
Position Uncertainty		3.28 ft	Wellhead Elevation:		Ground Level:	4,770.00 ft

<b>Wellbore</b>	OH				
<b>Magnetics</b>	<b>Model Name</b>	<b>Sample Date</b>	<b>Declination (°)</b>	<b>Dip Angle (°)</b>	<b>Field Strength (nT)</b>
	IGRF2015	4/1/2017	8.26	66.88	52,430

<b>Design</b>	Plan #1			
<b>Audit Notes:</b>				
<b>Version:</b>	<b>Phase:</b>	PLAN	<b>Tie On Depth:</b>	0.00
<b>Vertical Section:</b>	<b>Depth From (TVD) (ft)</b>	<b>+N/-S (ft)</b>	<b>+E/-W (ft)</b>	<b>Direction (°)</b>
	0.00	0.00	0.00	268.01

<b>Plan Survey Tool Program</b>	<b>Date</b>	4/5/2017		
<b>Depth From (ft)</b>	<b>Depth To (ft)</b>	<b>Survey (Wellbore)</b>	<b>Tool Name</b>	<b>Remarks</b>
1	0.00	15,703.27 Plan #1 (OH)	MWD+IFR1	
			OWSG MWD + IFR1	

<b>Plan Sections</b>										
<b>Measured Depth (ft)</b>	<b>Inclination (°)</b>	<b>Azimuth (°)</b>	<b>Vertical Depth (ft)</b>	<b>+N/-S (ft)</b>	<b>+E/-W (ft)</b>	<b>Dogleg Rate (°/100ft)</b>	<b>Build Rate (°/100ft)</b>	<b>Turn Rate (°/100ft)</b>	<b>TFO (°)</b>	<b>Target</b>
0.00	0.00	0.00	0.00	0.00	0.00	0.00	0.00	0.00	0.00	
300.00	0.00	0.00	300.00	0.00	0.00	0.00	0.00	0.00	0.00	
740.00	8.80	66.65	738.27	13.37	30.96	2.00	2.00	0.00	66.65	
6,477.15	8.80	66.65	6,407.89	361.24	836.78	0.00	0.00	0.00	0.00	
7,574.97	90.61	268.01	7,134.00	380.45	198.80	9.00	7.45	-14.45	-158.38	
15,703.32	90.61	268.01	7,047.00	97.83	-7,924.17	0.00	0.00	0.00	0.00	PBHL_Boomerang 12

<b>Database:</b>	EDM 5000.14 Single User Db	<b>Local Co-ordinate Reference:</b>	Well Boomerang 12C-6-M
<b>Company:</b>	Synergy Resources Corporation	<b>TVD Reference:</b>	GL 4770+KB 20 @ 4790.00ft
<b>Project:</b>	SEC 5-T5N-R66W	<b>MD Reference:</b>	GL 4770+KB 20 @ 4790.00ft
<b>Site:</b>	Boomerang 21-5	<b>North Reference:</b>	True
<b>Well:</b>	Boomerang 12C-6-M	<b>Survey Calculation Method:</b>	Minimum Curvature
<b>Wellbore:</b>	OH		
<b>Design:</b>	Plan #1		

Planned Survey									
Measured Depth (ft)	Inclination (°)	Azimuth (°)	Vertical Depth (ft)	+N/-S (ft)	+E/-W (ft)	Vertical Section (ft)	Dogleg Rate (°/100ft)	Build Rate (°/100ft)	Turn Rate (°/100ft)
0.00	0.00	0.00	0.00	0.00	0.00	0.00	0.00	0.00	0.00
100.00	0.00	0.00	100.00	0.00	0.00	0.00	0.00	0.00	0.00
200.00	0.00	0.00	200.00	0.00	0.00	0.00	0.00	0.00	0.00
300.00	0.00	0.00	300.00	0.00	0.00	0.00	0.00	0.00	0.00
Start Build 2.00									
400.00	2.00	66.65	399.98	0.69	1.60	-1.63	2.00	2.00	0.00
500.00	4.00	66.65	499.84	2.77	6.41	-6.50	2.00	2.00	0.00
600.00	6.00	66.65	599.45	6.22	14.41	-14.62	2.00	2.00	0.00
700.00	8.00	66.65	698.70	11.05	25.60	-25.96	2.00	2.00	0.00
740.00	8.80	66.65	738.27	13.37	30.96	-31.41	2.00	2.00	0.00
Start 5737.15 hold at 740.00 MD									
800.00	8.80	66.65	797.57	17.00	39.39	-39.96	0.00	0.00	0.00
900.00	8.80	66.65	896.39	23.07	53.43	-54.20	0.00	0.00	0.00
1,000.00	8.80	66.65	995.21	29.13	67.48	-68.45	0.00	0.00	0.00
1,100.00	8.80	66.65	1,094.03	35.19	81.53	-82.70	0.00	0.00	0.00
1,200.00	8.80	66.65	1,192.86	41.26	95.57	-96.95	0.00	0.00	0.00
1,300.00	8.80	66.65	1,291.68	47.32	109.62	-111.19	0.00	0.00	0.00
1,400.00	8.80	66.65	1,390.50	53.39	123.66	-125.44	0.00	0.00	0.00
1,500.00	8.80	66.65	1,489.33	59.45	137.71	-139.69	0.00	0.00	0.00
1,600.00	8.80	66.65	1,588.15	65.51	151.75	-153.94	0.00	0.00	0.00
1,700.00	8.80	66.65	1,686.97	71.58	165.80	-168.18	0.00	0.00	0.00
1,763.78	8.80	66.65	1,750.00	75.44	174.76	-177.27	0.00	0.00	0.00
9 5/8"									
1,800.00	8.80	66.65	1,785.79	77.64	179.85	-182.43	0.00	0.00	0.00
1,900.00	8.80	66.65	1,884.62	83.70	193.89	-196.68	0.00	0.00	0.00
2,000.00	8.80	66.65	1,983.44	89.77	207.94	-210.93	0.00	0.00	0.00
2,100.00	8.80	66.65	2,082.26	95.83	221.98	-225.18	0.00	0.00	0.00
2,200.00	8.80	66.65	2,181.09	101.89	236.03	-239.42	0.00	0.00	0.00
2,300.00	8.80	66.65	2,279.91	107.96	250.07	-253.67	0.00	0.00	0.00
2,400.00	8.80	66.65	2,378.73	114.02	264.12	-267.92	0.00	0.00	0.00
2,500.00	8.80	66.65	2,477.55	120.08	278.16	-282.17	0.00	0.00	0.00
2,600.00	8.80	66.65	2,576.38	126.15	292.21	-296.41	0.00	0.00	0.00
2,700.00	8.80	66.65	2,675.20	132.21	306.26	-310.66	0.00	0.00	0.00
2,800.00	8.80	66.65	2,774.02	138.28	320.30	-324.91	0.00	0.00	0.00
2,900.00	8.80	66.65	2,872.85	144.34	334.35	-339.16	0.00	0.00	0.00
3,000.00	8.80	66.65	2,971.67	150.40	348.39	-353.41	0.00	0.00	0.00
3,100.00	8.80	66.65	3,070.49	156.47	362.44	-367.65	0.00	0.00	0.00
3,200.00	8.80	66.65	3,169.31	162.53	376.48	-381.90	0.00	0.00	0.00
3,300.00	8.80	66.65	3,268.14	168.59	390.53	-396.15	0.00	0.00	0.00
3,400.00	8.80	66.65	3,366.96	174.66	404.58	-410.40	0.00	0.00	0.00
3,500.00	8.80	66.65	3,465.78	180.72	418.62	-424.64	0.00	0.00	0.00
3,600.00	8.80	66.65	3,564.61	186.78	432.67	-438.89	0.00	0.00	0.00
3,700.00	8.80	66.65	3,663.43	192.85	446.71	-453.14	0.00	0.00	0.00
3,800.00	8.80	66.65	3,762.25	198.91	460.76	-467.39	0.00	0.00	0.00
3,900.00	8.80	66.65	3,861.07	204.97	474.80	-481.64	0.00	0.00	0.00
4,000.00	8.80	66.65	3,959.90	211.04	488.85	-495.88	0.00	0.00	0.00
4,100.00	8.80	66.65	4,058.72	217.10	502.89	-510.13	0.00	0.00	0.00
4,200.00	8.80	66.65	4,157.54	223.16	516.94	-524.38	0.00	0.00	0.00
4,300.00	8.80	66.65	4,256.37	229.23	530.99	-538.63	0.00	0.00	0.00
4,400.00	8.80	66.65	4,355.19	235.29	545.03	-552.87	0.00	0.00	0.00
4,500.00	8.80	66.65	4,454.01	241.36	559.08	-567.12	0.00	0.00	0.00
4,600.00	8.80	66.65	4,552.83	247.42	573.12	-581.37	0.00	0.00	0.00
4,700.00	8.80	66.65	4,651.66	253.48	587.17	-595.62	0.00	0.00	0.00

<b>Database:</b>	EDM 5000.14 Single User Db	<b>Local Co-ordinate Reference:</b>	Well Boomerang 12C-6-M
<b>Company:</b>	Synergy Resources Corporation	<b>TVD Reference:</b>	GL 4770+KB 20 @ 4790.00ft
<b>Project:</b>	SEC 5-T5N-R66W	<b>MD Reference:</b>	GL 4770+KB 20 @ 4790.00ft
<b>Site:</b>	Boomerang 21-5	<b>North Reference:</b>	True
<b>Well:</b>	Boomerang 12C-6-M	<b>Survey Calculation Method:</b>	Minimum Curvature
<b>Wellbore:</b>	OH		
<b>Design:</b>	Plan #1		

Planned Survey									
Measured Depth (ft)	Inclination (°)	Azimuth (°)	Vertical Depth (ft)	+N/-S (ft)	+E/-W (ft)	Vertical Section (ft)	Dogleg Rate (°/100ft)	Build Rate (°/100ft)	Turn Rate (°/100ft)
4,800.00	8.80	66.65	4,750.48	259.55	601.21	-609.86	0.00	0.00	0.00
4,900.00	8.80	66.65	4,849.30	265.61	615.26	-624.11	0.00	0.00	0.00
5,000.00	8.80	66.65	4,948.13	271.67	629.31	-638.36	0.00	0.00	0.00
5,100.00	8.80	66.65	5,046.95	277.74	643.35	-652.61	0.00	0.00	0.00
5,200.00	8.80	66.65	5,145.77	283.80	657.40	-666.86	0.00	0.00	0.00
5,300.00	8.80	66.65	5,244.59	289.86	671.44	-681.10	0.00	0.00	0.00
5,400.00	8.80	66.65	5,343.42	295.93	685.49	-695.35	0.00	0.00	0.00
5,500.00	8.80	66.65	5,442.24	301.99	699.53	-709.60	0.00	0.00	0.00
5,600.00	8.80	66.65	5,541.06	308.05	713.58	-723.85	0.00	0.00	0.00
5,700.00	8.80	66.65	5,639.89	314.12	727.63	-738.09	0.00	0.00	0.00
5,800.00	8.80	66.65	5,738.71	320.18	741.67	-752.34	0.00	0.00	0.00
5,900.00	8.80	66.65	5,837.53	326.25	755.72	-766.59	0.00	0.00	0.00
6,000.00	8.80	66.65	5,936.35	332.31	769.76	-780.84	0.00	0.00	0.00
6,100.00	8.80	66.65	6,035.18	338.37	783.81	-795.09	0.00	0.00	0.00
6,200.00	8.80	66.65	6,134.00	344.44	797.85	-809.33	0.00	0.00	0.00
6,300.00	8.80	66.65	6,232.82	350.50	811.90	-823.58	0.00	0.00	0.00
6,400.00	8.80	66.65	6,331.64	356.56	825.94	-837.83	0.00	0.00	0.00
6,477.15	8.80	66.65	6,407.89	361.24	836.78	-848.82	0.00	0.00	0.00
Start DLS 9.00 TFO -158.38									
6,500.00	6.93	60.36	6,430.52	362.62	839.58	-851.67	9.00	-8.19	-27.54
6,600.00	4.32	316.43	6,530.22	368.34	842.24	-854.52	9.00	-2.61	-103.93
6,700.00	12.29	283.06	6,629.13	373.48	829.25	-841.71	9.00	7.97	-33.37
6,800.00	21.10	276.45	6,724.83	377.92	800.93	-813.57	9.00	8.81	-6.61
6,900.00	30.03	273.65	6,814.95	381.55	757.98	-770.77	9.00	8.92	-2.81
7,000.00	38.98	272.04	6,897.28	384.26	701.46	-714.39	9.00	8.95	-1.61
7,100.00	47.95	270.96	6,969.79	386.01	632.77	-645.79	9.00	8.97	-1.08
7,200.00	56.93	270.15	7,030.69	386.75	553.59	-566.68	9.00	8.98	-0.81
7,300.00	65.91	269.49	7,078.48	386.45	465.86	-479.00	9.00	8.98	-0.66
7,400.00	74.89	268.92	7,112.00	385.12	371.76	-384.91	9.00	8.98	-0.57
7,500.00	83.88	268.39	7,130.40	382.81	273.60	-286.73	9.00	8.99	-0.53
7,574.97	90.61	268.01	7,134.00	380.45	198.80	-211.89	9.00	8.99	-0.51
LP(1029 FNL 2488 FWL)									
7,575.88	90.61	268.01	7,133.99	380.42	197.89	-210.98	0.00	0.00	0.00
PLP_Boomerang 12C-6-M(1039 FNL 2488 FWL)									
7,600.00	90.61	268.01	7,133.73	379.58	173.79	-186.86	0.00	0.00	0.00
7,700.00	90.61	268.01	7,132.66	376.11	73.85	-86.87	0.00	0.00	0.00
7,800.00	90.61	268.01	7,131.59	372.63	-26.08	13.12	0.00	0.00	0.00
7,900.00	90.61	268.01	7,130.52	369.15	-126.01	113.12	0.00	0.00	0.00
8,000.00	90.61	268.01	7,129.45	365.68	-225.95	213.11	0.00	0.00	0.00
8,100.00	90.61	268.01	7,128.38	362.20	-325.88	313.11	0.00	0.00	0.00
8,200.00	90.61	268.01	7,127.31	358.72	-425.81	413.10	0.00	0.00	0.00
8,300.00	90.61	268.01	7,126.24	355.24	-525.75	513.10	0.00	0.00	0.00
8,400.00	90.61	268.01	7,125.17	351.77	-625.68	613.09	0.00	0.00	0.00
8,500.00	90.61	268.01	7,124.10	348.29	-725.62	713.08	0.00	0.00	0.00
8,600.00	90.61	268.01	7,123.03	344.81	-825.55	813.08	0.00	0.00	0.00
8,700.00	90.61	268.01	7,121.96	341.34	-925.48	913.07	0.00	0.00	0.00
8,800.00	90.61	268.01	7,120.89	337.86	-1,025.42	1,013.07	0.00	0.00	0.00
8,900.00	90.61	268.01	7,119.82	334.38	-1,125.35	1,113.06	0.00	0.00	0.00
9,000.00	90.61	268.01	7,118.75	330.91	-1,225.29	1,213.06	0.00	0.00	0.00
9,100.00	90.61	268.01	7,117.68	327.43	-1,325.22	1,313.05	0.00	0.00	0.00
9,200.00	90.61	268.01	7,116.61	323.95	-1,425.15	1,413.04	0.00	0.00	0.00
9,300.00	90.61	268.01	7,115.54	320.47	-1,525.09	1,513.04	0.00	0.00	0.00
9,400.00	90.61	268.01	7,114.47	317.00	-1,625.02	1,613.03	0.00	0.00	0.00

<b>Database:</b>	EDM 5000.14 Single User Db	<b>Local Co-ordinate Reference:</b>	Well Boomerang 12C-6-M
<b>Company:</b>	Synergy Resources Corporation	<b>TVD Reference:</b>	GL 4770+KB 20 @ 4790.00ft
<b>Project:</b>	SEC 5-T5N-R66W	<b>MD Reference:</b>	GL 4770+KB 20 @ 4790.00ft
<b>Site:</b>	Boomerang 21-5	<b>North Reference:</b>	True
<b>Well:</b>	Boomerang 12C-6-M	<b>Survey Calculation Method:</b>	Minimum Curvature
<b>Wellbore:</b>	OH		
<b>Design:</b>	Plan #1		

Planned Survey									
Measured Depth (ft)	Inclination (°)	Azimuth (°)	Vertical Depth (ft)	+N/-S (ft)	+E/-W (ft)	Vertical Section (ft)	Dogleg Rate (°/100ft)	Build Rate (°/100ft)	Turn Rate (°/100ft)
9,500.00	90.61	268.01	7,113.40	313.52	-1,724.95	1,713.03	0.00	0.00	0.00
9,600.00	90.61	268.01	7,112.33	310.04	-1,824.89	1,813.02	0.00	0.00	0.00
9,700.00	90.61	268.01	7,111.26	306.57	-1,924.82	1,913.02	0.00	0.00	0.00
9,800.00	90.61	268.01	7,110.19	303.09	-2,024.76	2,013.01	0.00	0.00	0.00
9,900.00	90.61	268.01	7,109.12	299.61	-2,124.69	2,113.00	0.00	0.00	0.00
10,000.00	90.61	268.01	7,108.04	296.14	-2,224.62	2,213.00	0.00	0.00	0.00
10,100.00	90.61	268.01	7,106.97	292.66	-2,324.56	2,312.99	0.00	0.00	0.00
10,200.00	90.61	268.01	7,105.90	289.18	-2,424.49	2,412.99	0.00	0.00	0.00
10,300.00	90.61	268.01	7,104.83	285.70	-2,524.42	2,512.98	0.00	0.00	0.00
10,400.00	90.61	268.01	7,103.76	282.23	-2,624.36	2,612.98	0.00	0.00	0.00
10,500.00	90.61	268.01	7,102.69	278.75	-2,724.29	2,712.97	0.00	0.00	0.00
10,600.00	90.61	268.01	7,101.62	275.27	-2,824.23	2,812.96	0.00	0.00	0.00
10,700.00	90.61	268.01	7,100.55	271.80	-2,924.16	2,912.96	0.00	0.00	0.00
10,800.00	90.61	268.01	7,099.48	268.32	-3,024.09	3,012.95	0.00	0.00	0.00
10,900.00	90.61	268.01	7,098.41	264.84	-3,124.03	3,112.95	0.00	0.00	0.00
11,000.00	90.61	268.01	7,097.34	261.37	-3,223.96	3,212.94	0.00	0.00	0.00
11,100.00	90.61	268.01	7,096.27	257.89	-3,323.89	3,312.94	0.00	0.00	0.00
11,200.00	90.61	268.01	7,095.20	254.41	-3,423.83	3,412.93	0.00	0.00	0.00
11,300.00	90.61	268.01	7,094.13	250.94	-3,523.76	3,512.92	0.00	0.00	0.00
11,400.00	90.61	268.01	7,093.06	247.46	-3,623.70	3,612.92	0.00	0.00	0.00
11,500.00	90.61	268.01	7,091.99	243.98	-3,723.63	3,712.91	0.00	0.00	0.00
11,600.00	90.61	268.01	7,090.92	240.50	-3,823.56	3,812.91	0.00	0.00	0.00
11,700.00	90.61	268.01	7,089.85	237.03	-3,923.50	3,912.90	0.00	0.00	0.00
11,800.00	90.61	268.01	7,088.78	233.55	-4,023.43	4,012.89	0.00	0.00	0.00
11,900.00	90.61	268.01	7,087.71	230.07	-4,123.37	4,112.89	0.00	0.00	0.00
12,000.00	90.61	268.01	7,086.64	226.60	-4,223.30	4,212.88	0.00	0.00	0.00
12,100.00	90.61	268.01	7,085.57	223.12	-4,323.23	4,312.88	0.00	0.00	0.00
12,200.00	90.61	268.01	7,084.50	219.64	-4,423.17	4,412.87	0.00	0.00	0.00
12,300.00	90.61	268.01	7,083.43	216.17	-4,523.10	4,512.87	0.00	0.00	0.00
12,400.00	90.61	268.01	7,082.36	212.69	-4,623.03	4,612.86	0.00	0.00	0.00
12,500.00	90.61	268.01	7,081.29	209.21	-4,722.97	4,712.85	0.00	0.00	0.00
12,600.00	90.61	268.01	7,080.22	205.73	-4,822.90	4,812.85	0.00	0.00	0.00
12,700.00	90.61	268.01	7,079.15	202.26	-4,922.84	4,912.84	0.00	0.00	0.00
12,800.00	90.61	268.01	7,078.08	198.78	-5,022.77	5,012.84	0.00	0.00	0.00
12,900.00	90.61	268.01	7,077.01	195.30	-5,122.70	5,112.83	0.00	0.00	0.00
13,000.00	90.61	268.01	7,075.93	191.83	-5,222.64	5,212.83	0.00	0.00	0.00
13,100.00	90.61	268.01	7,074.86	188.35	-5,322.57	5,312.82	0.00	0.00	0.00
13,200.00	90.61	268.01	7,073.79	184.87	-5,422.50	5,412.81	0.00	0.00	0.00
13,300.00	90.61	268.01	7,072.72	181.40	-5,522.44	5,512.81	0.00	0.00	0.00
13,400.00	90.61	268.01	7,071.65	177.92	-5,622.37	5,612.80	0.00	0.00	0.00
13,500.00	90.61	268.01	7,070.58	174.44	-5,722.31	5,712.80	0.00	0.00	0.00
13,600.00	90.61	268.01	7,069.51	170.96	-5,822.24	5,812.79	0.00	0.00	0.00
13,700.00	90.61	268.01	7,068.44	167.49	-5,922.17	5,912.79	0.00	0.00	0.00
13,800.00	90.61	268.01	7,067.37	164.01	-6,022.11	6,012.78	0.00	0.00	0.00
13,900.00	90.61	268.01	7,066.30	160.53	-6,122.04	6,112.77	0.00	0.00	0.00
14,000.00	90.61	268.01	7,065.23	157.06	-6,221.98	6,212.77	0.00	0.00	0.00
14,100.00	90.61	268.01	7,064.16	153.58	-6,321.91	6,312.76	0.00	0.00	0.00
14,200.00	90.61	268.01	7,063.09	150.10	-6,421.84	6,412.76	0.00	0.00	0.00
14,300.00	90.61	268.01	7,062.02	146.63	-6,521.78	6,512.75	0.00	0.00	0.00
14,400.00	90.61	268.01	7,060.95	143.15	-6,621.71	6,612.75	0.00	0.00	0.00
14,500.00	90.61	268.01	7,059.88	139.67	-6,721.64	6,712.74	0.00	0.00	0.00
14,600.00	90.61	268.01	7,058.81	136.19	-6,821.58	6,812.73	0.00	0.00	0.00
14,700.00	90.61	268.01	7,057.74	132.72	-6,921.51	6,912.73	0.00	0.00	0.00
14,800.00	90.61	268.01	7,056.67	129.24	-7,021.45	7,012.72	0.00	0.00	0.00



<b>Database:</b>	EDM 5000.14 Single User Db	<b>Local Co-ordinate Reference:</b>	Well Boomerang 12C-6-M
<b>Company:</b>	Synergy Resources Corporation	<b>TVD Reference:</b>	GL 4770+KB 20 @ 4790.00ft
<b>Project:</b>	SEC 5-T5N-R66W	<b>MD Reference:</b>	GL 4770+KB 20 @ 4790.00ft
<b>Site:</b>	Boomerang 21-5	<b>North Reference:</b>	True
<b>Well:</b>	Boomerang 12C-6-M	<b>Survey Calculation Method:</b>	Minimum Curvature
<b>Wellbore:</b>	OH		
<b>Design:</b>	Plan #1		

Planned Survey									
Measured Depth (ft)	Inclination (°)	Azimuth (°)	Vertical Depth (ft)	+N/-S (ft)	+E/-W (ft)	Vertical Section (ft)	Dogleg Rate (°/100ft)	Build Rate (°/100ft)	Turn Rate (°/100ft)
14,900.00	90.61	268.01	7,055.60	125.76	-7,121.38	7,112.72	0.00	0.00	0.00
15,000.00	90.61	268.01	7,054.53	122.29	-7,221.31	7,212.71	0.00	0.00	0.00
15,100.00	90.61	268.01	7,053.46	118.81	-7,321.25	7,312.71	0.00	0.00	0.00
15,200.00	90.61	268.01	7,052.39	115.33	-7,421.18	7,412.70	0.00	0.00	0.00
15,300.00	90.61	268.01	7,051.32	111.86	-7,521.11	7,512.69	0.00	0.00	0.00
15,400.00	90.61	268.01	7,050.25	108.38	-7,621.05	7,612.69	0.00	0.00	0.00
15,500.00	90.61	268.01	7,049.18	104.90	-7,720.98	7,712.68	0.00	0.00	0.00
15,600.00	90.61	268.01	7,048.11	101.42	-7,820.92	7,812.68	0.00	0.00	0.00
15,700.00	90.61	268.01	7,047.04	97.95	-7,920.85	7,912.67	0.00	0.00	0.00
15,703.32	90.61	268.01	7,047.00	97.83	-7,924.17	7,915.99	0.00	0.00	0.00
TD at 15703.32 - PBHL_Boomerang 12C-6-M(970 FNL 150 FWL)									

Design Targets									
Target Name	Dip Angle (°)	Dip Dir. (°)	TVD (ft)	+N/-S (ft)	+E/-W (ft)	Northing (ft)	Easting (ft)	Latitude	Longitude
- hit/miss target									
- Shape									
PBHL_Boomerang 12C-	0.00	0.00	7,047.00	97.83	-7,924.17	1,401,487.57	3,185,949.93	40.4335550	-104.8320270
- plan hits target center									
- Point									
PLP_Boomerang 12C-6-	0.00	0.00	7,134.00	371.61	198.20	1,401,825.13	3,194,069.90	40.4343100	-104.8028490
- plan misses target center by 8.82ft at 7575.88ft MD (7133.99 TVD, 380.42 N, 197.89 E)									
- Point									

Casing Points					
Measured Depth (ft)	Vertical Depth (ft)	Name		Casing Diameter (in)	Hole Diameter (in)
1,763.78	1,750.00	9 5/8"		9.625	13.500

Plan Annotations				
Measured Depth (ft)	Vertical Depth (ft)	Local Coordinates		Comment
		+N/-S (ft)	+E/-W (ft)	
300.00	300.00	0.00	0.00	Start Build 2.00
740.00	738.27	13.37	30.96	Start 5737.15 hold at 740.00 MD
6,477.15	6,407.89	361.24	836.78	Start DLS 9.00 TFO -158.38
7,574.97	7,134.00	380.45	198.80	LP(1029 FNL 2488 FWL)
15,703.32	7,047.00	97.83	-7,924.17	TD at 15703.32