



Project: SEC 5-T5N-R66W  
Site: Boomerang 21-5  
Well: Boomerang 12N-6B-M  
Wellbore: OH  
Design: Plan #1

SECTION DETAILS									
MD	Inc	Azi	TVD	+N/-S	+E/-W	Dleg	TFace	VSect	Target
0.00	0.00	0.00	0.00	0.00	0.00	0.00	0.00	0.00	
200.00	0.00	0.00	200.00	0.00	0.00	0.00	0.00	0.00	
961.44	15.23	51.89	952.51	62.08	79.16	2.00	51.89	-81.75	
4390.25	15.23	51.89	4260.91	617.92	787.84	0.00	0.00	-813.64	
5151.69	0.00	0.00	5013.42	680.00	867.00	2.00	180.00	-895.39	
6451.69	0.00	0.00	6313.42	680.00	867.00	0.00	0.00	-895.39	
7458.56	90.62	267.54	6950.00	652.38	224.11	9.00	267.54	-251.90	
15618.10	90.62	267.54	6862.00	302.20	-7927.44	0.00	0.00	7907.16	PBHL

PROJECT DETAILS: SEC 5-T5N-R66W

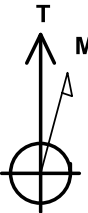
Geodetic System: US State Plane 1983  
Datum: North American Datum 1983  
Ellipsoid: GRS 1980  
Zone: Colorado Northern Zone  
Colorado Northern Zone  
System Datum: Mean Sea Level

DESIGN TARGET DETAILS

Name	TVD	+N/-S	+E/-W	Northing	Easting	Latitude	Longitude	Shape
PBHL	6862.00	302.20	-7927.44	1401706.85	3185946.33	40.4341570	-104.8320340	Point
- plan hits target center								
PLP	6950.00	641.18	224.92	1402109.86	3194095.77	40.4350910	-104.8027480	Point
- plan misses target center by 11.22ft at 7458.23ft MD (6950.01 TVD, 652.40 N, 224.44 E)								

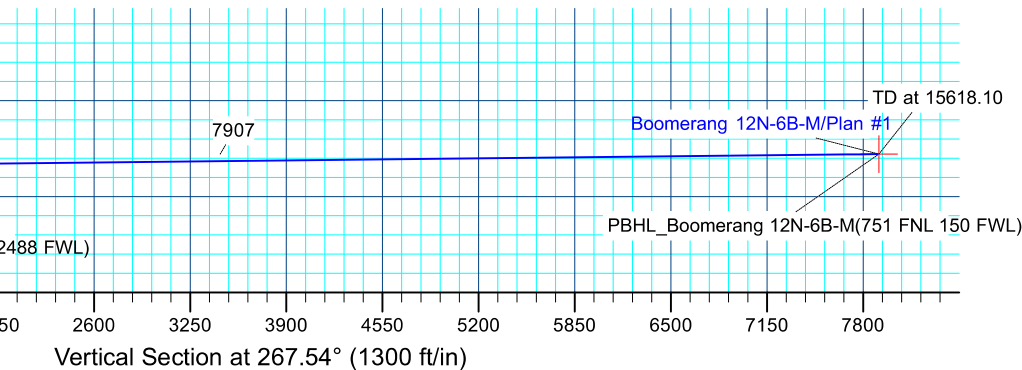
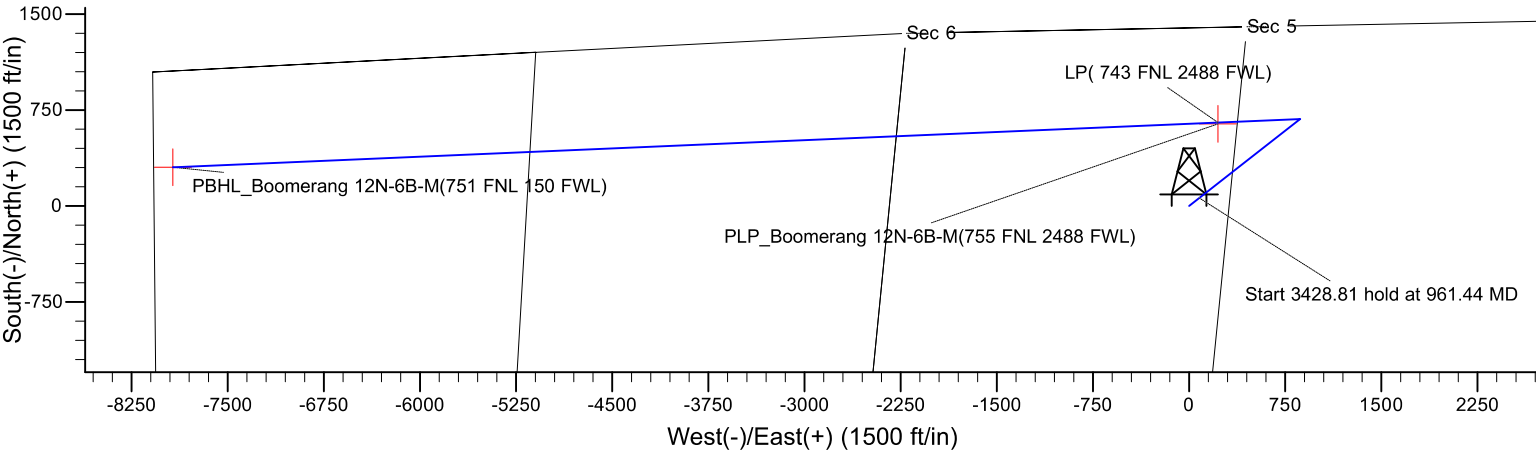
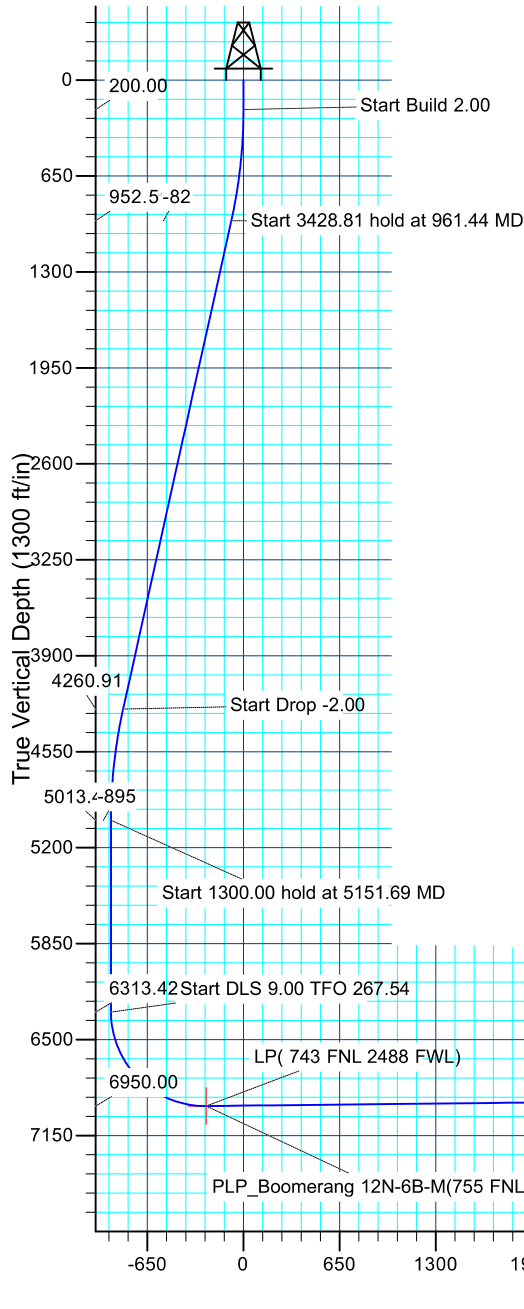
CASING DETAILS

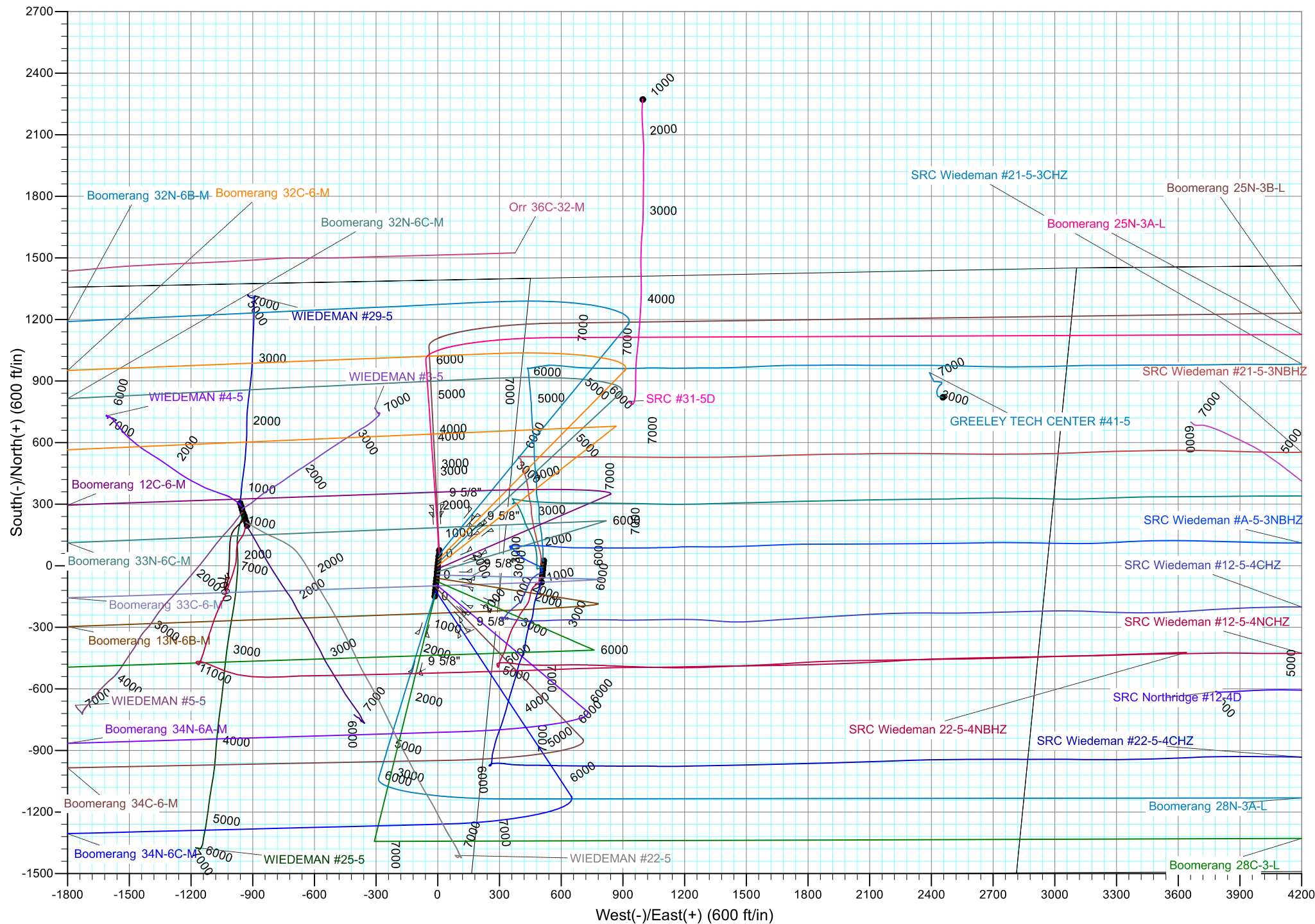
TVD	MD	Name	Size
1750.00	1787.96	9 5/8"	9.625

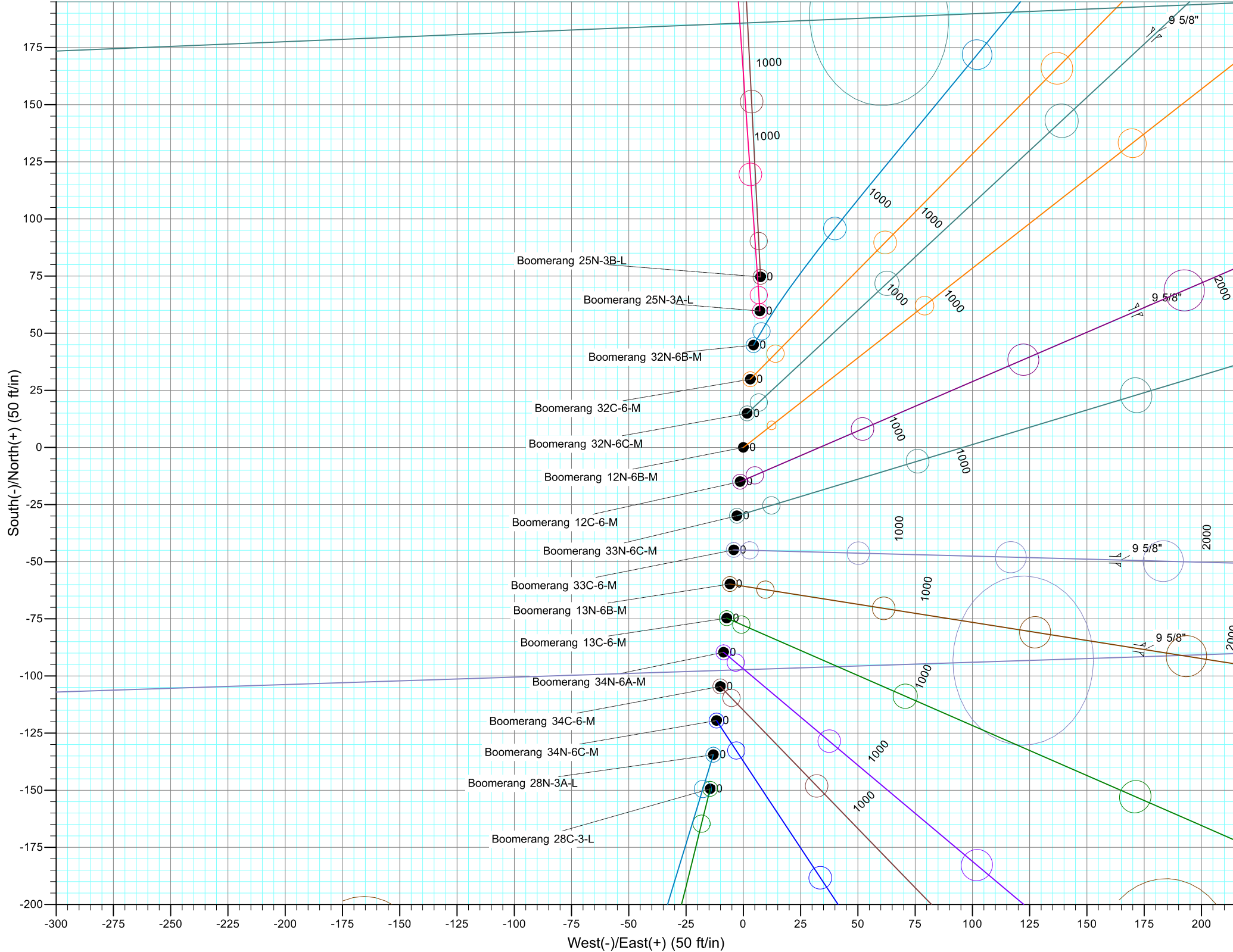


Azimuths to True North  
Magnetic North: 8.26°

Magnetic Field  
Strength: 52429.7snT  
Dip Angle: 66.88°  
Date: 4/2/2017  
Model: IGRF2015









# **Synergy Resources Corporation**

**SEC 5-T5N-R66W**

**Boomerang 21-5**

**Boomerang 12N-6B-M**

**OH**

**Plan: Plan #1**

## **Standard Planning Report**

**05 April, 2017**

<b>Database:</b>	EDM 5000.14 Single User Db	<b>Local Co-ordinate Reference:</b>	Well Boomerang 12N-6B-M
<b>Company:</b>	Synergy Resources Corporation	<b>TVD Reference:</b>	GL 4770+KB 20 @ 4790.00ft
<b>Project:</b>	SEC 5-T5N-R66W	<b>MD Reference:</b>	GL 4770+KB 20 @ 4790.00ft
<b>Site:</b>	Boomerang 21-5	<b>North Reference:</b>	True
<b>Well:</b>	Boomerang 12N-6B-M	<b>Survey Calculation Method:</b>	Minimum Curvature
<b>Wellbore:</b>	OH		
<b>Design:</b>	Plan #1		

<b>Project</b>	SEC 5-T5N-R66W		
<b>Map System:</b>	US State Plane 1983	<b>System Datum:</b>	Mean Sea Level
<b>Geo Datum:</b>	North American Datum 1983		
<b>Map Zone:</b>	Colorado Northern Zone		

Site	Boomerang 21-5				
Site Position:		Northing:	1,401,541.68 ft	Latitude:	40.4335360
From:	Lat/Long	Easting:	3,193,882.83 ft	Longitude:	-104.8035290
Position Uncertainty:	3.28 ft	Slot Radius:	13.200 in	Grid Convergence:	0.45 °

Well	Boomerang 12N-6B-M, 1392 FNL 2327 FWL					
Well Position	+N/-S	-74.69 ft	Northing:	1,401,466.93 ft	Latitude:	40.4333310
	+E/-W	-7.52 ft	Easting:	3,193,875.90 ft	Longitude:	-104.8035560
Position Uncertainty		3.28 ft	Wellhead Elevation:		Ground Level:	4,770.00 ft

<b>Wellbore</b>	OH				
<b>Magnetics</b>	<b>Model Name</b>	<b>Sample Date</b>	<b>Declination (°)</b>	<b>Dip Angle (°)</b>	<b>Field Strength (nT)</b>
	IGRF2015	4/2/2017	8.26	66.88	52,430

<b>Design</b>	Plan #1			
<b>Audit Notes:</b>				
<b>Version:</b>	<b>Phase:</b>	PLAN	<b>Tie On Depth:</b>	0.00
<b>Vertical Section:</b>	<b>Depth From (TVD) (ft)</b>	<b>+N/-S (ft)</b>	<b>+E/-W (ft)</b>	<b>Direction (°)</b>
	0.00	0.00	0.00	267.54

<b>Plan Survey Tool Program</b>	<b>Date</b>	4/5/2017		
<b>Depth From (ft)</b>	<b>Depth To (ft)</b>	<b>Survey (Wellbore)</b>	<b>Tool Name</b>	<b>Remarks</b>
1	0.00	15,618.10 Plan #1 (OH)	MWD+IFR1	
			OWSG MWD + IFR1	

<b>Plan Sections</b>										
<b>Measured Depth (ft)</b>	<b>Inclination (°)</b>	<b>Azimuth (°)</b>	<b>Vertical Depth (ft)</b>	<b>+N/-S (ft)</b>	<b>+E/-W (ft)</b>	<b>Dogleg Rate (°/100ft)</b>	<b>Build Rate (°/100ft)</b>	<b>Turn Rate (°/100ft)</b>	<b>TFO (°)</b>	<b>Target</b>
0.00	0.00	0.00	0.00	0.00	0.00	0.00	0.00	0.00	0.00	
200.00	0.00	0.00	200.00	0.00	0.00	0.00	0.00	0.00	0.00	
961.44	15.23	51.89	952.51	62.08	79.16	2.00	2.00	0.00	51.89	
4,390.25	15.23	51.89	4,260.91	617.92	787.84	0.00	0.00	0.00	0.00	
5,151.69	0.00	0.00	5,013.42	680.00	867.00	2.00	-2.00	0.00	180.00	
6,451.69	0.00	0.00	6,313.42	680.00	867.00	0.00	0.00	0.00	0.00	
7,458.56	90.62	267.54	6,950.00	652.38	224.11	9.00	9.00	-9.18	267.54	
15,618.10	90.62	267.54	6,862.00	302.20	-7,927.44	0.00	0.00	0.00	0.00	PBHL_Boomerang 12

<b>Database:</b>	EDM 5000.14 Single User Db	<b>Local Co-ordinate Reference:</b>	Well Boomerang 12N-6B-M
<b>Company:</b>	Synergy Resources Corporation	<b>TVD Reference:</b>	GL 4770+KB 20 @ 4790.00ft
<b>Project:</b>	SEC 5-T5N-R66W	<b>MD Reference:</b>	GL 4770+KB 20 @ 4790.00ft
<b>Site:</b>	Boomerang 21-5	<b>North Reference:</b>	True
<b>Well:</b>	Boomerang 12N-6B-M	<b>Survey Calculation Method:</b>	Minimum Curvature
<b>Wellbore:</b>	OH		
<b>Design:</b>	Plan #1		

Planned Survey									
Measured Depth (ft)	Inclination (°)	Azimuth (°)	Vertical Depth (ft)	+N/-S (ft)	+E/-W (ft)	Vertical Section (ft)	Dogleg Rate (°/100ft)	Build Rate (°/100ft)	Turn Rate (°/100ft)
0.00	0.00	0.00	0.00	0.00	0.00	0.00	0.00	0.00	0.00
100.00	0.00	0.00	100.00	0.00	0.00	0.00	0.00	0.00	0.00
200.00	0.00	0.00	200.00	0.00	0.00	0.00	0.00	0.00	0.00
<b>Start Build 2.00</b>									
300.00	2.00	51.89	299.98	1.08	1.37	-1.42	2.00	2.00	0.00
400.00	4.00	51.89	399.84	4.31	5.49	-5.67	2.00	2.00	0.00
500.00	6.00	51.89	499.45	9.69	12.35	-12.75	2.00	2.00	0.00
600.00	8.00	51.89	598.70	17.21	21.94	-22.66	2.00	2.00	0.00
700.00	10.00	51.89	697.47	26.86	34.25	-35.37	2.00	2.00	0.00
800.00	12.00	51.89	795.62	38.63	49.26	-50.87	2.00	2.00	0.00
900.00	14.00	51.89	893.06	52.52	66.96	-69.15	2.00	2.00	0.00
961.44	15.23	51.89	952.51	62.08	79.16	-81.75	2.00	2.00	0.00
<b>Start 3428.81 hold at 961.44 MD</b>									
1,000.00	15.23	51.89	989.71	68.33	87.13	-89.98	0.00	0.00	0.00
1,100.00	15.23	51.89	1,086.20	84.54	107.79	-111.32	0.00	0.00	0.00
1,200.00	15.23	51.89	1,182.69	100.76	128.46	-132.67	0.00	0.00	0.00
1,300.00	15.23	51.89	1,279.18	116.97	149.13	-154.01	0.00	0.00	0.00
1,400.00	15.23	51.89	1,375.67	133.18	169.80	-175.36	0.00	0.00	0.00
1,500.00	15.23	51.89	1,472.15	149.39	190.47	-196.71	0.00	0.00	0.00
1,600.00	15.23	51.89	1,568.64	165.60	211.14	-218.05	0.00	0.00	0.00
1,700.00	15.23	51.89	1,665.13	181.81	231.81	-239.40	0.00	0.00	0.00
1,787.96	15.23	51.89	1,750.00	196.07	249.99	-258.17	0.00	0.00	0.00
<b>9 5/8"</b>									
1,800.00	15.23	51.89	1,761.62	198.02	252.47	-260.74	0.00	0.00	0.00
1,900.00	15.23	51.89	1,858.11	214.23	273.14	-282.09	0.00	0.00	0.00
2,000.00	15.23	51.89	1,954.60	230.44	293.81	-303.43	0.00	0.00	0.00
2,100.00	15.23	51.89	2,051.09	246.65	314.48	-324.78	0.00	0.00	0.00
2,200.00	15.23	51.89	2,147.57	262.86	335.15	-346.12	0.00	0.00	0.00
2,300.00	15.23	51.89	2,244.06	279.07	355.82	-367.47	0.00	0.00	0.00
2,400.00	15.23	51.89	2,340.55	295.28	376.49	-388.81	0.00	0.00	0.00
2,500.00	15.23	51.89	2,437.04	311.49	397.16	-410.16	0.00	0.00	0.00
2,600.00	15.23	51.89	2,533.53	327.70	417.82	-431.50	0.00	0.00	0.00
2,700.00	15.23	51.89	2,630.02	343.92	438.49	-452.85	0.00	0.00	0.00
2,800.00	15.23	51.89	2,726.50	360.13	459.16	-474.20	0.00	0.00	0.00
2,900.00	15.23	51.89	2,822.99	376.34	479.83	-495.54	0.00	0.00	0.00
3,000.00	15.23	51.89	2,919.48	392.55	500.50	-516.89	0.00	0.00	0.00
3,100.00	15.23	51.89	3,015.97	408.76	521.17	-538.23	0.00	0.00	0.00
3,200.00	15.23	51.89	3,112.46	424.97	541.84	-559.58	0.00	0.00	0.00
3,300.00	15.23	51.89	3,208.95	441.18	562.50	-580.92	0.00	0.00	0.00
3,400.00	15.23	51.89	3,305.44	457.39	583.17	-602.27	0.00	0.00	0.00
3,500.00	15.23	51.89	3,401.92	473.60	603.84	-623.61	0.00	0.00	0.00
3,600.00	15.23	51.89	3,498.41	489.81	624.51	-644.96	0.00	0.00	0.00
3,700.00	15.23	51.89	3,594.90	506.02	645.18	-666.30	0.00	0.00	0.00
3,800.00	15.23	51.89	3,691.39	522.23	665.85	-687.65	0.00	0.00	0.00
3,900.00	15.23	51.89	3,787.88	538.44	686.52	-708.99	0.00	0.00	0.00
4,000.00	15.23	51.89	3,884.37	554.65	707.18	-730.34	0.00	0.00	0.00
4,100.00	15.23	51.89	3,980.85	570.87	727.85	-751.68	0.00	0.00	0.00
4,200.00	15.23	51.89	4,077.34	587.08	748.52	-773.03	0.00	0.00	0.00
4,300.00	15.23	51.89	4,173.83	603.29	769.19	-794.38	0.00	0.00	0.00
4,390.25	15.23	51.89	4,260.91	617.92	787.84	-813.64	0.00	0.00	0.00
<b>Start Drop -2.00</b>									
4,400.00	15.03	51.89	4,270.32	619.49	789.85	-815.71	2.00	-2.00	0.00
4,500.00	13.03	51.89	4,367.33	634.45	808.93	-835.41	2.00	-2.00	0.00

<b>Database:</b>	EDM 5000.14 Single User Db	<b>Local Co-ordinate Reference:</b>	Well Boomerang 12N-6B-M
<b>Company:</b>	Synergy Resources Corporation	<b>TVD Reference:</b>	GL 4770+KB 20 @ 4790.00ft
<b>Project:</b>	SEC 5-T5N-R66W	<b>MD Reference:</b>	GL 4770+KB 20 @ 4790.00ft
<b>Site:</b>	Boomerang 21-5	<b>North Reference:</b>	True
<b>Well:</b>	Boomerang 12N-6B-M	<b>Survey Calculation Method:</b>	Minimum Curvature
<b>Wellbore:</b>	OH		
<b>Design:</b>	Plan #1		

Planned Survey									
Measured Depth (ft)	Inclination (°)	Azimuth (°)	Vertical Depth (ft)	+N/-S (ft)	+E/-W (ft)	Vertical Section (ft)	Dogleg Rate (°/100ft)	Build Rate (°/100ft)	Turn Rate (°/100ft)
4,600.00	11.03	51.89	4,465.13	647.32	825.33	-852.35	2.00	-2.00	0.00
4,700.00	9.03	51.89	4,563.60	658.07	839.04	-866.51	2.00	-2.00	0.00
4,800.00	7.03	51.89	4,662.61	666.69	850.04	-877.87	2.00	-2.00	0.00
4,900.00	5.03	51.89	4,762.05	673.18	858.31	-886.41	2.00	-2.00	0.00
5,000.00	3.03	51.89	4,861.80	677.52	863.84	-892.13	2.00	-2.00	0.00
5,100.00	1.03	51.89	4,961.73	679.71	866.63	-895.01	2.00	-2.00	0.00
5,151.69	0.00	0.00	5,013.42	680.00	867.00	-895.39	2.00	-2.00	0.00
Start 1300.00 hold at 5151.69 MD									
5,200.00	0.00	0.00	5,061.73	680.00	867.00	-895.39	0.00	0.00	0.00
5,300.00	0.00	0.00	5,161.73	680.00	867.00	-895.39	0.00	0.00	0.00
5,400.00	0.00	0.00	5,261.73	680.00	867.00	-895.39	0.00	0.00	0.00
5,500.00	0.00	0.00	5,361.73	680.00	867.00	-895.39	0.00	0.00	0.00
5,600.00	0.00	0.00	5,461.73	680.00	867.00	-895.39	0.00	0.00	0.00
5,700.00	0.00	0.00	5,561.73	680.00	867.00	-895.39	0.00	0.00	0.00
5,800.00	0.00	0.00	5,661.73	680.00	867.00	-895.39	0.00	0.00	0.00
5,900.00	0.00	0.00	5,761.73	680.00	867.00	-895.39	0.00	0.00	0.00
6,000.00	0.00	0.00	5,861.73	680.00	867.00	-895.39	0.00	0.00	0.00
6,100.00	0.00	0.00	5,961.73	680.00	867.00	-895.39	0.00	0.00	0.00
6,200.00	0.00	0.00	6,061.73	680.00	867.00	-895.39	0.00	0.00	0.00
6,300.00	0.00	0.00	6,161.73	680.00	867.00	-895.39	0.00	0.00	0.00
6,400.00	0.00	0.00	6,261.73	680.00	867.00	-895.39	0.00	0.00	0.00
6,451.69	0.00	0.00	6,313.42	680.00	867.00	-895.39	0.00	0.00	0.00
Start DLS 9.00 TFO 267.54									
6,500.00	4.35	267.54	6,361.68	679.92	865.17	-893.56	9.00	9.00	0.00
6,600.00	13.35	267.54	6,460.39	679.26	849.82	-878.19	9.00	9.00	0.00
6,700.00	22.35	267.54	6,555.48	677.95	819.23	-847.57	9.00	9.00	0.00
6,800.00	31.35	267.54	6,644.61	676.01	774.16	-802.46	9.00	9.00	0.00
6,900.00	40.35	267.54	6,725.58	673.50	715.71	-743.95	9.00	9.00	0.00
7,000.00	49.35	267.54	6,796.41	670.48	645.32	-673.50	9.00	9.00	0.00
7,100.00	58.35	267.54	6,855.34	667.01	564.73	-592.84	9.00	9.00	0.00
7,200.00	67.35	267.54	6,900.93	663.20	475.93	-503.95	9.00	9.00	0.00
7,300.00	76.35	267.54	6,932.05	659.13	381.09	-409.03	9.00	9.00	0.00
7,400.00	85.35	267.54	6,947.94	654.89	282.55	-310.40	9.00	9.00	0.00
7,458.23	90.59	267.54	6,950.01	652.40	224.44	-252.23	9.00	9.00	0.00
PLP_Boomerang 12N-6B-M(755 FNL 2488 FWL)									
7,458.56	90.62	267.54	6,950.00	652.38	224.11	-251.90	9.00	9.00	0.00
LP( 743 FNL 2488 FWL)									
7,500.00	90.62	267.54	6,949.56	650.60	182.71	-210.46	0.00	0.00	0.00
7,600.00	90.62	267.54	6,948.48	646.31	82.80	-110.47	0.00	0.00	0.00
7,700.00	90.62	267.54	6,947.40	642.02	-17.10	-10.47	0.00	0.00	0.00
7,800.00	90.62	267.54	6,946.32	637.73	-117.00	89.52	0.00	0.00	0.00
7,900.00	90.62	267.54	6,945.24	633.44	-216.90	189.51	0.00	0.00	0.00
8,000.00	90.62	267.54	6,944.16	629.14	-316.80	289.51	0.00	0.00	0.00
8,100.00	90.62	267.54	6,943.08	624.85	-416.71	389.50	0.00	0.00	0.00
8,200.00	90.62	267.54	6,942.01	620.56	-516.61	489.50	0.00	0.00	0.00
8,300.00	90.62	267.54	6,940.93	616.27	-616.51	589.49	0.00	0.00	0.00
8,400.00	90.62	267.54	6,939.85	611.98	-716.41	689.49	0.00	0.00	0.00
8,500.00	90.62	267.54	6,938.77	607.69	-816.31	789.48	0.00	0.00	0.00
8,600.00	90.62	267.54	6,937.69	603.39	-916.22	889.47	0.00	0.00	0.00
8,700.00	90.62	267.54	6,936.61	599.10	-1,016.12	989.47	0.00	0.00	0.00
8,800.00	90.62	267.54	6,935.54	594.81	-1,116.02	1,089.46	0.00	0.00	0.00
8,900.00	90.62	267.54	6,934.46	590.52	-1,215.92	1,189.46	0.00	0.00	0.00
9,000.00	90.62	267.54	6,933.38	586.23	-1,315.82	1,289.45	0.00	0.00	0.00

<b>Database:</b>	EDM 5000.14 Single User Db	<b>Local Co-ordinate Reference:</b>	Well Boomerang 12N-6B-M
<b>Company:</b>	Synergy Resources Corporation	<b>TVD Reference:</b>	GL 4770+KB 20 @ 4790.00ft
<b>Project:</b>	SEC 5-T5N-R66W	<b>MD Reference:</b>	GL 4770+KB 20 @ 4790.00ft
<b>Site:</b>	Boomerang 21-5	<b>North Reference:</b>	True
<b>Well:</b>	Boomerang 12N-6B-M	<b>Survey Calculation Method:</b>	Minimum Curvature
<b>Wellbore:</b>	OH		
<b>Design:</b>	Plan #1		

Planned Survey									
Measured Depth (ft)	Inclination (°)	Azimuth (°)	Vertical Depth (ft)	+N/-S (ft)	+E/-W (ft)	Vertical Section (ft)	Dogleg Rate (°/100ft)	Build Rate (°/100ft)	Turn Rate (°/100ft)
9,100.00	90.62	267.54	6,932.30	581.94	-1,415.73	1,389.44	0.00	0.00	0.00
9,200.00	90.62	267.54	6,931.22	577.64	-1,515.63	1,489.44	0.00	0.00	0.00
9,300.00	90.62	267.54	6,930.14	573.35	-1,615.53	1,589.43	0.00	0.00	0.00
9,400.00	90.62	267.54	6,929.06	569.06	-1,715.43	1,689.43	0.00	0.00	0.00
9,500.00	90.62	267.54	6,927.99	564.77	-1,815.34	1,789.42	0.00	0.00	0.00
9,600.00	90.62	267.54	6,926.91	560.48	-1,915.24	1,889.42	0.00	0.00	0.00
9,700.00	90.62	267.54	6,925.83	556.19	-2,015.14	1,989.41	0.00	0.00	0.00
9,800.00	90.62	267.54	6,924.75	551.89	-2,115.04	2,089.40	0.00	0.00	0.00
9,900.00	90.62	267.54	6,923.67	547.60	-2,214.94	2,189.40	0.00	0.00	0.00
10,000.00	90.62	267.54	6,922.59	543.31	-2,314.85	2,289.39	0.00	0.00	0.00
10,100.00	90.62	267.54	6,921.51	539.02	-2,414.75	2,389.39	0.00	0.00	0.00
10,200.00	90.62	267.54	6,920.44	534.73	-2,514.65	2,489.38	0.00	0.00	0.00
10,300.00	90.62	267.54	6,919.36	530.44	-2,614.55	2,589.37	0.00	0.00	0.00
10,400.00	90.62	267.54	6,918.28	526.14	-2,714.45	2,689.37	0.00	0.00	0.00
10,500.00	90.62	267.54	6,917.20	521.85	-2,814.36	2,789.36	0.00	0.00	0.00
10,600.00	90.62	267.54	6,916.12	517.56	-2,914.26	2,889.36	0.00	0.00	0.00
10,700.00	90.62	267.54	6,915.04	513.27	-3,014.16	2,989.35	0.00	0.00	0.00
10,800.00	90.62	267.54	6,913.96	508.98	-3,114.06	3,089.35	0.00	0.00	0.00
10,900.00	90.62	267.54	6,912.89	504.68	-3,213.96	3,189.34	0.00	0.00	0.00
11,000.00	90.62	267.54	6,911.81	500.39	-3,313.87	3,289.33	0.00	0.00	0.00
11,100.00	90.62	267.54	6,910.73	496.10	-3,413.77	3,389.33	0.00	0.00	0.00
11,200.00	90.62	267.54	6,909.65	491.81	-3,513.67	3,489.32	0.00	0.00	0.00
11,300.00	90.62	267.54	6,908.57	487.52	-3,613.57	3,589.32	0.00	0.00	0.00
11,400.00	90.62	267.54	6,907.49	483.23	-3,713.47	3,689.31	0.00	0.00	0.00
11,500.00	90.62	267.54	6,906.41	478.93	-3,813.38	3,789.30	0.00	0.00	0.00
11,600.00	90.62	267.54	6,905.34	474.64	-3,913.28	3,889.30	0.00	0.00	0.00
11,700.00	90.62	267.54	6,904.26	470.35	-4,013.18	3,989.29	0.00	0.00	0.00
11,800.00	90.62	267.54	6,903.18	466.06	-4,113.08	4,089.29	0.00	0.00	0.00
11,900.00	90.62	267.54	6,902.10	461.77	-4,212.98	4,189.28	0.00	0.00	0.00
12,000.00	90.62	267.54	6,901.02	457.48	-4,312.89	4,289.28	0.00	0.00	0.00
12,100.00	90.62	267.54	6,899.94	453.18	-4,412.79	4,389.27	0.00	0.00	0.00
12,200.00	90.62	267.54	6,898.87	448.89	-4,512.69	4,489.26	0.00	0.00	0.00
12,300.00	90.62	267.54	6,897.79	444.60	-4,612.59	4,589.26	0.00	0.00	0.00
12,400.00	90.62	267.54	6,896.71	440.31	-4,712.49	4,689.25	0.00	0.00	0.00
12,500.00	90.62	267.54	6,895.63	436.02	-4,812.40	4,789.25	0.00	0.00	0.00
12,600.00	90.62	267.54	6,894.55	431.73	-4,912.30	4,889.24	0.00	0.00	0.00
12,700.00	90.62	267.54	6,893.47	427.43	-5,012.20	4,989.24	0.00	0.00	0.00
12,800.00	90.62	267.54	6,892.39	423.14	-5,112.10	5,089.23	0.00	0.00	0.00
12,900.00	90.62	267.54	6,891.32	418.85	-5,212.00	5,189.22	0.00	0.00	0.00
13,000.00	90.62	267.54	6,890.24	414.56	-5,311.91	5,289.22	0.00	0.00	0.00
13,100.00	90.62	267.54	6,889.16	410.27	-5,411.81	5,389.21	0.00	0.00	0.00
13,200.00	90.62	267.54	6,888.08	405.98	-5,511.71	5,489.21	0.00	0.00	0.00
13,300.00	90.62	267.54	6,887.00	401.68	-5,611.61	5,589.20	0.00	0.00	0.00
13,400.00	90.62	267.54	6,885.92	397.39	-5,711.51	5,689.19	0.00	0.00	0.00
13,500.00	90.62	267.54	6,884.84	393.10	-5,811.42	5,789.19	0.00	0.00	0.00
13,600.00	90.62	267.54	6,883.77	388.81	-5,911.32	5,889.18	0.00	0.00	0.00
13,700.00	90.62	267.54	6,882.69	384.52	-6,011.22	5,989.18	0.00	0.00	0.00
13,800.00	90.62	267.54	6,881.61	380.22	-6,111.12	6,089.17	0.00	0.00	0.00
13,900.00	90.62	267.54	6,880.53	375.93	-6,211.03	6,189.17	0.00	0.00	0.00
14,000.00	90.62	267.54	6,879.45	371.64	-6,310.93	6,289.16	0.00	0.00	0.00
14,100.00	90.62	267.54	6,878.37	367.35	-6,410.83	6,389.15	0.00	0.00	0.00
14,200.00	90.62	267.54	6,877.29	363.06	-6,510.73	6,489.15	0.00	0.00	0.00
14,300.00	90.62	267.54	6,876.22	358.77	-6,610.63	6,589.14	0.00	0.00	0.00
14,400.00	90.62	267.54	6,875.14	354.47	-6,710.54	6,689.14	0.00	0.00	0.00



<b>Database:</b>	EDM 5000.14 Single User Db	<b>Local Co-ordinate Reference:</b>	Well Boomerang 12N-6B-M
<b>Company:</b>	Synergy Resources Corporation	<b>TVD Reference:</b>	GL 4770+KB 20 @ 4790.00ft
<b>Project:</b>	SEC 5-T5N-R66W	<b>MD Reference:</b>	GL 4770+KB 20 @ 4790.00ft
<b>Site:</b>	Boomerang 21-5	<b>North Reference:</b>	True
<b>Well:</b>	Boomerang 12N-6B-M	<b>Survey Calculation Method:</b>	Minimum Curvature
<b>Wellbore:</b>	OH		
<b>Design:</b>	Plan #1		

Planned Survey										
Measured Depth (ft)	Inclination (°)	Azimuth (°)	Vertical Depth (ft)	+N/-S (ft)	+E/-W (ft)	Vertical Section (ft)	Dogleg Rate (°/100ft)	Build Rate (°/100ft)	Turn Rate (°/100ft)	
14,500.00	90.62	267.54	6,874.06	350.18	-6,810.44	6,789.13	0.00	0.00	0.00	
14,600.00	90.62	267.54	6,872.98	345.89	-6,910.34	6,889.12	0.00	0.00	0.00	
14,700.00	90.62	267.54	6,871.90	341.60	-7,010.24	6,989.12	0.00	0.00	0.00	
14,800.00	90.62	267.54	6,870.82	337.31	-7,110.14	7,089.11	0.00	0.00	0.00	
14,900.00	90.62	267.54	6,869.75	333.02	-7,210.05	7,189.11	0.00	0.00	0.00	
15,000.00	90.62	267.54	6,868.67	328.72	-7,309.95	7,289.10	0.00	0.00	0.00	
15,100.00	90.62	267.54	6,867.59	324.43	-7,409.85	7,389.10	0.00	0.00	0.00	
15,200.00	90.62	267.54	6,866.51	320.14	-7,509.75	7,489.09	0.00	0.00	0.00	
15,300.00	90.62	267.54	6,865.43	315.85	-7,609.65	7,589.08	0.00	0.00	0.00	
15,400.00	90.62	267.54	6,864.35	311.56	-7,709.56	7,689.08	0.00	0.00	0.00	
15,500.00	90.62	267.54	6,863.27	307.27	-7,809.46	7,789.07	0.00	0.00	0.00	
15,600.00	90.62	267.54	6,862.20	302.97	-7,909.36	7,889.07	0.00	0.00	0.00	
15,618.10	90.62	267.54	6,862.00	302.20	-7,927.44	7,907.16	0.00	0.00	0.00	
TD at 15618.10 - PBHL_Boomerang 12N-6B-M(751 FNL 150 FWL)										

Design Targets										
Target Name	Dip Angle (°)	Dip Dir. (°)	TVD (ft)	+N/-S (ft)	+E/-W (ft)	Northing (ft)	Easting (ft)	Latitude	Longitude	
- hit/miss target										
- Shape										
PBHL_Boomerang 12N- - plan hits target center - Point	0.00	0.00	6,862.00	302.20	-7,927.44	1,401,706.86	3,185,946.33	40.4341570	-104.8320340	
PLP_Boomerang 12N-6l - plan misses target center by 11.22ft at 7458.23ft MD (6950.01 TVD, 652.40 N, 224.44 E) - Point	0.00	0.00	6,950.00	641.18	224.92	1,402,109.86	3,194,095.78	40.4350910	-104.8027480	

Casing Points									
Measured Depth (ft)	Vertical Depth (ft)	Name			Casing Diameter (in)	Hole Diameter (in)			
1,787.96	1,750.00	9 5/8"			9.625	13.500			

Plan Annotations					
Measured Depth (ft)	Vertical Depth (ft)	Local Coordinates			
		+N/-S (ft)	+E/-W (ft)	Comment	
200.00	200.00	0.00	0.00	Start Build 2.00	
961.44	952.51	62.08	79.16	Start 3428.81 hold at 961.44 MD	
4,390.25	4,260.91	617.92	787.84	Start Drop -2.00	
5,151.69	5,013.42	680.00	867.00	Start 1300.00 hold at 5151.69 MD	
6,451.69	6,313.42	680.00	867.00	Start DLS 9.00 TFO 267.54	
7,458.56	6,950.00	652.38	224.11	LP( 743 FNL 2488 FWL)	
15,618.10	6,862.00	302.20	-7,927.44	TD at 15618.10	