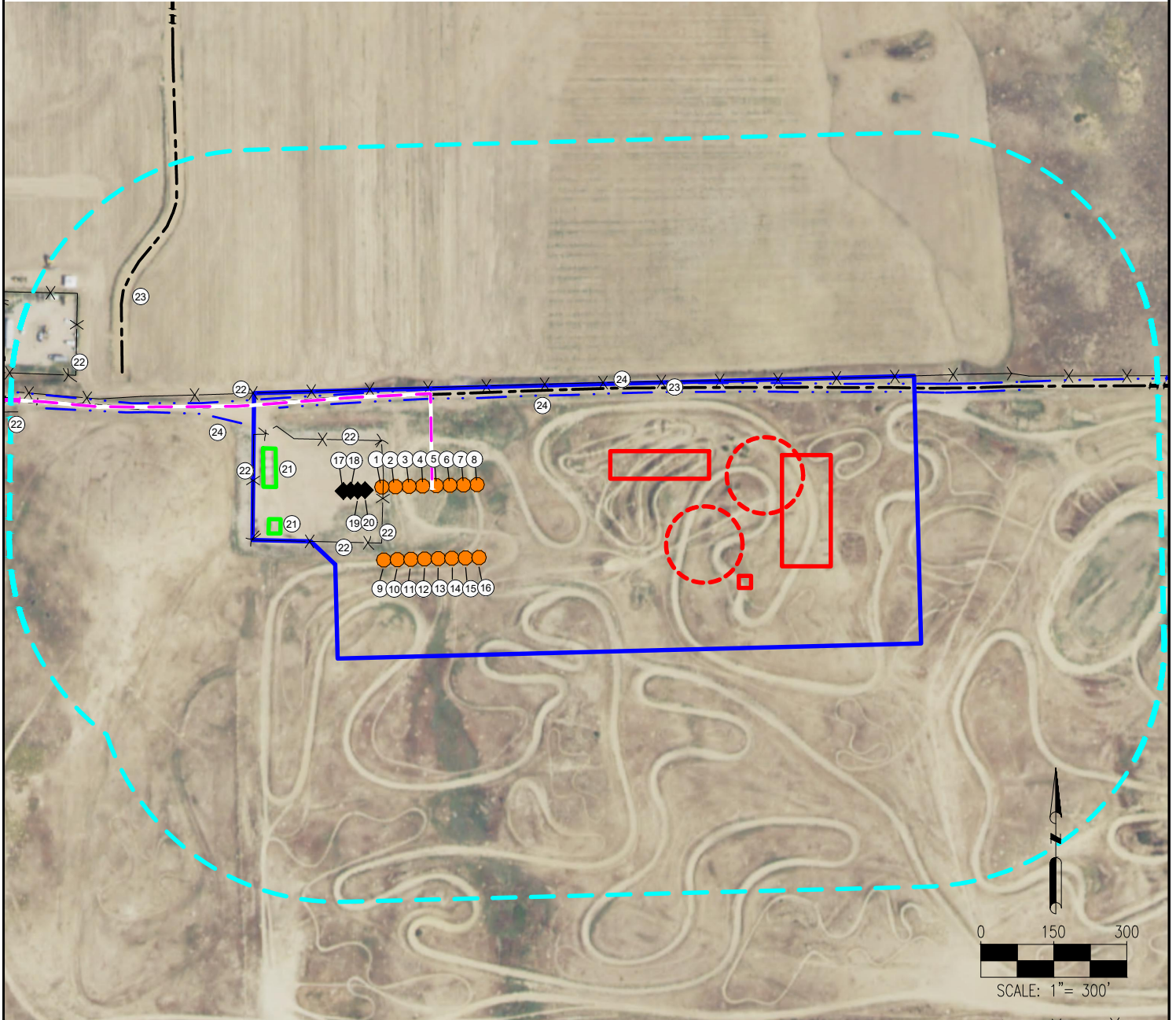


HFE 22-P PAD LOCATION DRAWING



- | | | |
|----------|---------------|---|
| 1. HFE 1 | 10. HFE 10 | 19. MLD 23-22 |
| 2. HFE 2 | 11. HFE 11 | 20. HFE 24-22 |
| 3. HFE 3 | 12. HFE 12 | 21. EXISTING FACILITIES (TO BE RECLAIMED) |
| 4. HFE 4 | 13. HFE 13 | 22. FENCES ARE ±137' W, ±168' NW, ±184' SW, |
| 5. HFE 5 | 14. HFE 14 | ±202' N, ±405' W, ±802' NW, 901' NW |
| 6. HFE 6 | 15. HFE 15 | 23. PRIVATE ROAD IS ±188' N, ±713' NW |
| 7. HFE 7 | 16. HFE 16 | 24. DITCHES ARE ±179' N, ±198' N, ±448' NW |
| 8. HFE 8 | 17. HFE 14-22 | |
| 9. HFE 9 | 18. MLD 13-22 | |

LEGEND:

- | | | |
|---------------------|-----------------------|----------------------------|
| ● = PROPOSED WELL | — — — = EXISTING ROAD | □ = DISTURBANCE AREA |
| ◆ = PRODUCING WELL | - - - - - = DITCH | □ = 500' RADIUS |
| - X - X - X = FENCE | | □ = PROPOSED FACILITY BERM |
| | | □ = EXISTING FACILITY BERM |
| | | □ = PROPOSED MLVT |

MEASURED FROM NEAREST WELL OR FACILITY:

- | | |
|----------------------------------|-----------|
| BUILDING | ±1034' NW |
| BUILDING UNIT | ±1034' NW |
| PUBLIC ROAD (COUNTY ROAD 7) | ±789' W |
| PROPERTY LINE (MLD EQUITIES LLC) | ±89' N |
| UTILITY (OVERHEAD UTILITY) | ±767' W |
| RAILROAD | >5280' SE |

- | | |
|--|-----|
| MEASURED FROM NEAREST EDGE OF DISTURBANCE: | |
| SURFACE WATER (DITCH) | ±0' |

REFERENCE LOCATION

HFE 6

LAT: 40.294721° N
LONG: 104.995106° W
ELEVATION: 4918'
1125' FSL & 1019' FWL
PDOP: 1.5

GPS OPERATOR: DOMINICK DAVIS

DISCLAIMER:
THIS PLOT DOES NOT REPRESENT A MONUMENTED LAND SURVEY AND SHOULD NOT BE
RELIED UPON TO DETERMINE BOUNDARY LINES, PROPERTY OWNERSHIP OR OTHER
PROPERTY INTERESTS. PARCEL LINES, IF DEPICTED HAVE NOT BEEN FIELD VERIFIED AND
MAY BE BASED UPON PUBLICLY AVAILABLE DATA THAT ALSO HAS NOT BEEN
INDEPENDENTLY VERIFIED.

DATA SOURCE:
AERIAL IMAGERY: NAIP 2015
WATER WELLS: COLORADO DWR
NHD: USGS

PUBLICLY AVAILABLE DATA SOURCES HAVE NOT BEEN
INDEPENDENTLY VERIFIED BY PFS.

MEASURED FROM NEAREST WELL:

WATER WELL	±1825' NW	SWL = 11'
PERMIT: 62628-F		RECEIPT: 0534117C

DISTURBANCE ACREAGE:

16.32 ACRES DRILLING OPERATIONS
7.76 ACRES INTERIM RECLAIM

CURRENT SURFACE USE: RANGELAND
FUTURE SURFACE USE: RANGELAND

PREPARED BY:



FIELD DATE:
09-01-16

DRAWING DATE:
04-05-17

BY:
CSG

CHECKED BY:
WDW

SITE NAME:
HFE 22-P PAD

SURFACE LOCATION:

SW 1/4 SW 1/4 SEC. 22 T4N, R68W, 6TH P.M.
WELD COUNTY, COLORADO

PREPARED FOR:

