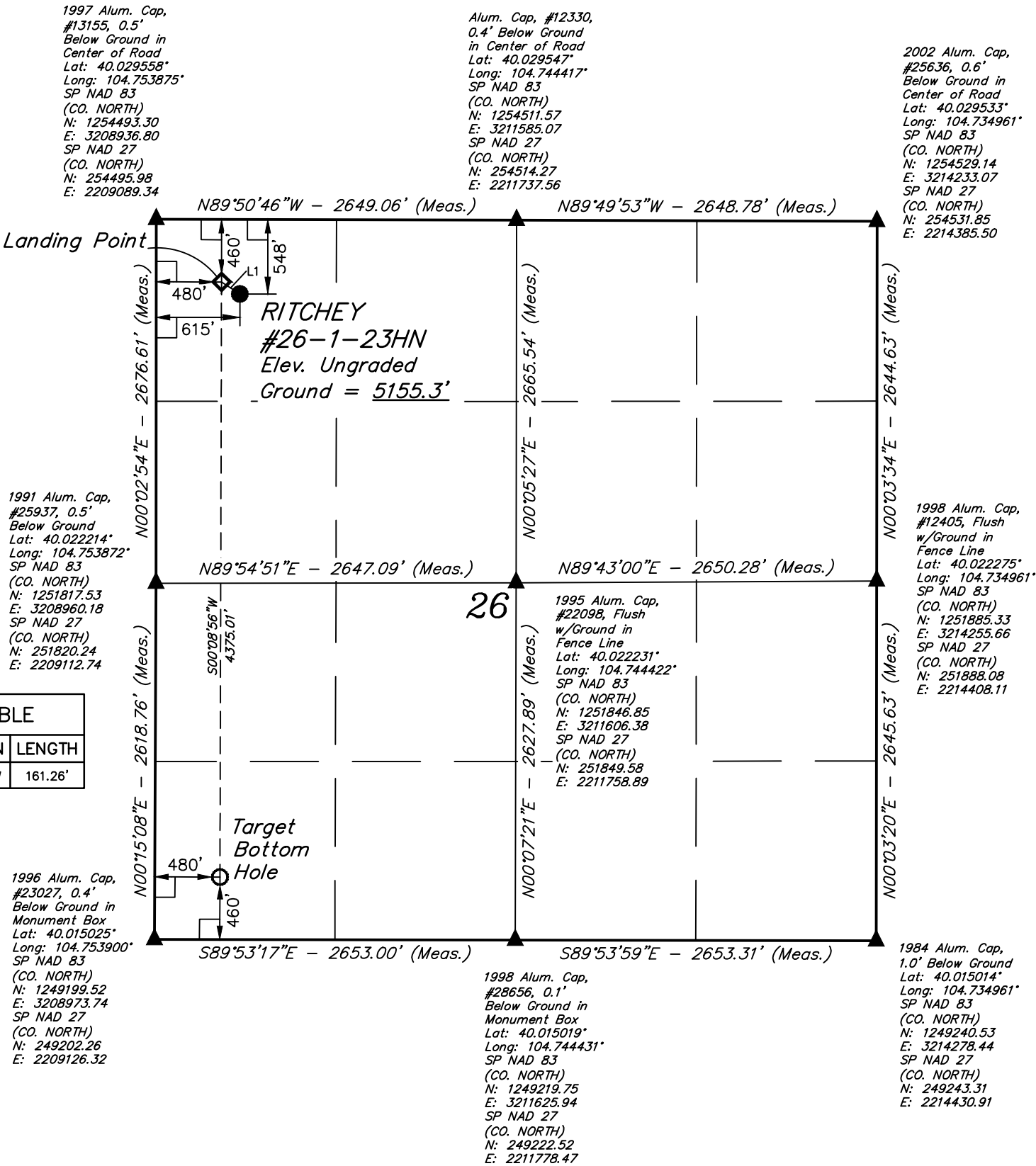


LEGEND:

- = 90° SYMBOL
- = PROPOSED WELLHEAD.
- = TARGET BOTTOM HOLE.
- = LANDING POINT.
- = SECTION CORNERS LOCATED. (NAD 83)

T1N, R66W, 6th P.M.



LINE TABLE		
LINE	DIRECTION	LENGTH
L1	N56°48'30"W	161.26'



NAD 83 (SURFACE LOCATION)	NAD 83 (LANDING POINT)	NAD 83 (TARGET BOTTOM HOLE)
LATITUDE = 40°01'40.99" (40.028053)	LATITUDE = 40°01'41.86" (40.028294)	LATITUDE = 40°00'58.63" (40.016286)
LONGITUDE = 104°45'06.04" (104.751678)	LONGITUDE = 104°45'07.78" (104.752161)	LONGITUDE = 104°45'07.86" (104.752183)
NAD 27 (SURFACE LOCATION)	NAD 27 (LANDING POINT)	NAD 27 (TARGET BOTTOM HOLE)
LATITUDE = 40°01'41.05" (40.028069)	LATITUDE = 40°01'41.92" (40.028311)	LATITUDE = 40°00'58.69" (40.016303)
LONGITUDE = 104°45'04.15" (104.751153)	LONGITUDE = 104°45'05.88" (104.751633)	LONGITUDE = 104°45'05.97" (104.751658)
STATE PLANE NAD 83 (CO. NORTH)	STATE PLANE NAD 83 (CO. NORTH)	STATE PLANE NAD 83 (CO. NORTH)
N: 1253949.79 E: 3209556.43	N: 1254036.75 E: 3209420.68	N: 1249663.05 E: 3209451.21
STATE PLANE NAD 27 (CO. NORTH)	STATE PLANE NAD 27 (CO. NORTH)	STATE PLANE NAD 27 (CO. NORTH)
N: 253952.49 E: 2209708.96	N: 254039.44 E: 2209573.21	N: 249665.79 E: 2209603.79

CERTIFICATE

THIS IS TO CERTIFY THAT THE ABOVE IS A TRUE AND CORRECT COPY OF THE NOTES OF ACTUAL SURVEYS MADE BY ME OR UNDER MY SUPERVISION, AND THAT THE SAME ARE TRUE AND CORRECT TO THE BEST OF MY KNOWLEDGE AND BELIEF.

COLORED REGISTERED LAND SURVEYOR  
REGISTRATION NO. 28285  
STATE OF COLORADO

REV: 1 01-31-17 M.D. (SHL CHANGE)

**BASIS OF BEARINGS**  
BASIS OF BEARINGS IS A G.P.S. OBSERVATION

**BASIS OF ELEVATION**  
HUBBS TRIANGULATION STATION LOCATED IN THE NE 1/4 OF SECTION 21, T1N, R64W, 6th P.M., TAKEN FROM THE KEENESBURG, QUADRANGLE, COLORADO, WELD COUNTY, 7.5 MINUTE QUAD (TOPOGRAPHIC MAP) PUBLISHED BY THE UNITED STATES DEPARTMENT OF THE INTERIOR, GEOLOGICAL SURVEY. SAID ELEVATION IS MARKED AS BEING 5168 FEET.

**UELS, LLC**  
Corporate Office \* 85 South 200 East  
Vernal, UT 84078 \* (435) 789-1017

**UINTAH**  
ENGINEERING & LAND SURVEYING



**WARD PETROLEUM CORPORATION**

**RITCHIEY #26-1-23HN**  
NW 1/4 NW 1/4, SECTION 26, T1N, R66W, 6th P.M.  
WELD COUNTY, COLORADO

SURVEYED BY	GREG WEIMER, C.M.	01-04-17	SCALE
DRAWN BY	K.B.	01-10-17	1" = 1000'

**WELL LOCATION PLAT**