

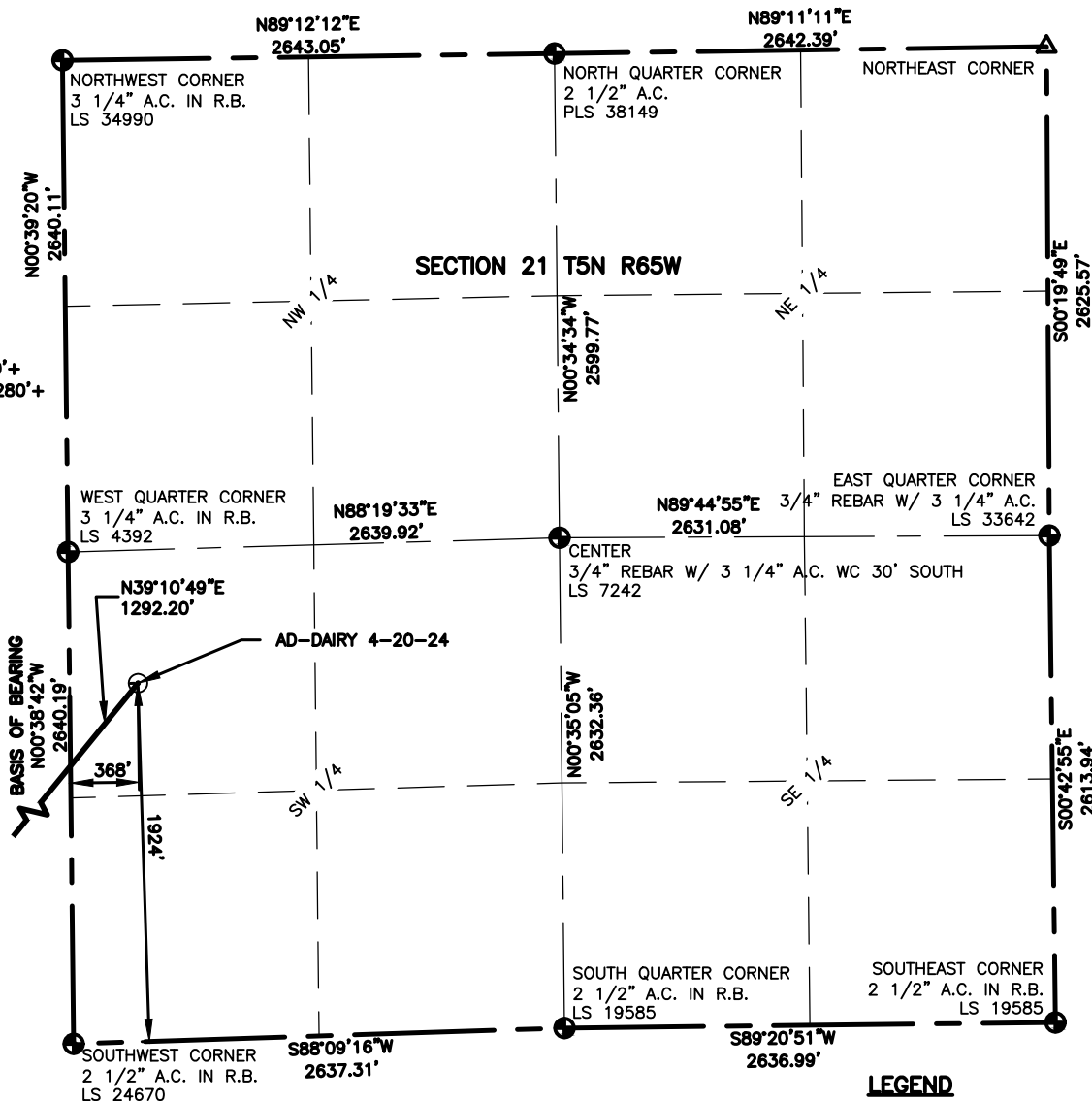
WELL LOCATION DATA:

LATITUDE: 40.38266°N
LONGITUDE: -104.67648°W
ELEVATION: 4639'
PDOP: 1.6
OPERATOR: C.WESTHOLMS
SURFACE USE: COMMERCIAL
PROPOSED GROUND ELEVATION: 4638'

NEAREST CULTURAL ITEMS:

PROPERTY LINE: 338'
BUILDING: 627'
BUILDING UNIT: 663'
HIGH OCCUPANCY BUILDING UNIT: 5280'+
DESIGNATED OUTSIDE ACTIVITY AREA: 5280'+
PUBLIC ROAD: 354'
ABOVE GROUND UTILITY: 393'
RAILROAD: 3072'

FIRST SUBMITTAL	5/05/16
SECOND SUBMITTAL	01/17/17



LEGEND

- △ COMPUTED ALIQUOT CORNER FROM MONUMENT RECORDS
- ⊙ PROPOSED WELL
- ⊙ ALIQUOT CORNER
- A.C. ALUMINUM CAP
- ⊙ BOTTOM HOLE
- R.B. RANGE BOX

NOTES:

- DISTANCES ARE MEASURED PERPENDICULAR TO NEAREST SECTION LINE AND ARE SHOWN ON THE SAME SIDE OF THE SECTION LINE WHERE THE WELL IS LOCATED.
- THIS MAP DOES NOT REPRESENT A MONUMENTED BOUNDARY SURVEY. SIXTEENTH CORNER LOCATIONS ARE COMPUTED, UNLESS OTHERWISE NOTED.
- BOTTOM HOLE LOCATIONS AND HORIZONTAL COMPLETION ZONE PROVIDED BY OTHERS.

BASIS OF BEARING:

THE WEST LINE OF THE SOUTHWEST QUARTER OF SECTION 21-T5N-R65W BEARS N00°38'42\"W BETWEEN THE SOUTHWEST CORNER OF SECTION 21 MONUMENTED WITH 2 1/2\" A.C. IN R.B. STAMPED \"LS 24670\" AND THE WEST QUARTER CORNER OF SECTION 21 MONUMENTED WITH 3 1/4\" A.C. IN R.B. STAMPED \"LS 4392\" BASED ON THE COLORADO NORTH 0501 STATE PLANE COORDINATE SYSTEM.

ELEVATIONS ARE BASED ON NAVD 88, AS OBSERVED FROM GPS OBSERVATIONS

LAND SURVEYOR'S CERTIFICATION

LAMP, RYNEARSON & ASSOCIATES, INC., OF FT. COLLINS, COLORADO HAS, IN ACCORDANCE WITH A REQUEST FROM DUSTIN DYK AT EXTRACTION, DETERMINED THE SURFACE LOCATION OF THE WELL DESIGNATED AS AD-DAIRY 4-20-24 TO BE 1924' FROM THE SOUTH LINE AND 368' FROM THE WEST LINE OF SECTION 21, TOWNSHIP 5 NORTH, RANGE 65 WEST OF THE 6TH P.M., WELD COUNTY, COLORADO.



0 1000
SCALE: 1\"= 1000'
U.S. SURVEY FEET

FRANK A. KOHL
COLORADO PLS 37067
DATE OF SURVEY: 07/20/2015 (SECTION CONTROL)
DATE OF SURVEY: 04/13/2016 (WELL LOCATION)



LAMP RYNEARSON
& ASSOCIATES

4715 Innovation Drive 970.226.0342 | P
Fort Collins, CO 80525 970.226.0879 | F
www.LRA-Inc.com

PROPOSED WELL LOCATION EXHIBIT
AD-DAIRY 4-20-24
1 OF 4

DRAWN BY
JMC
PATH/FILENAME

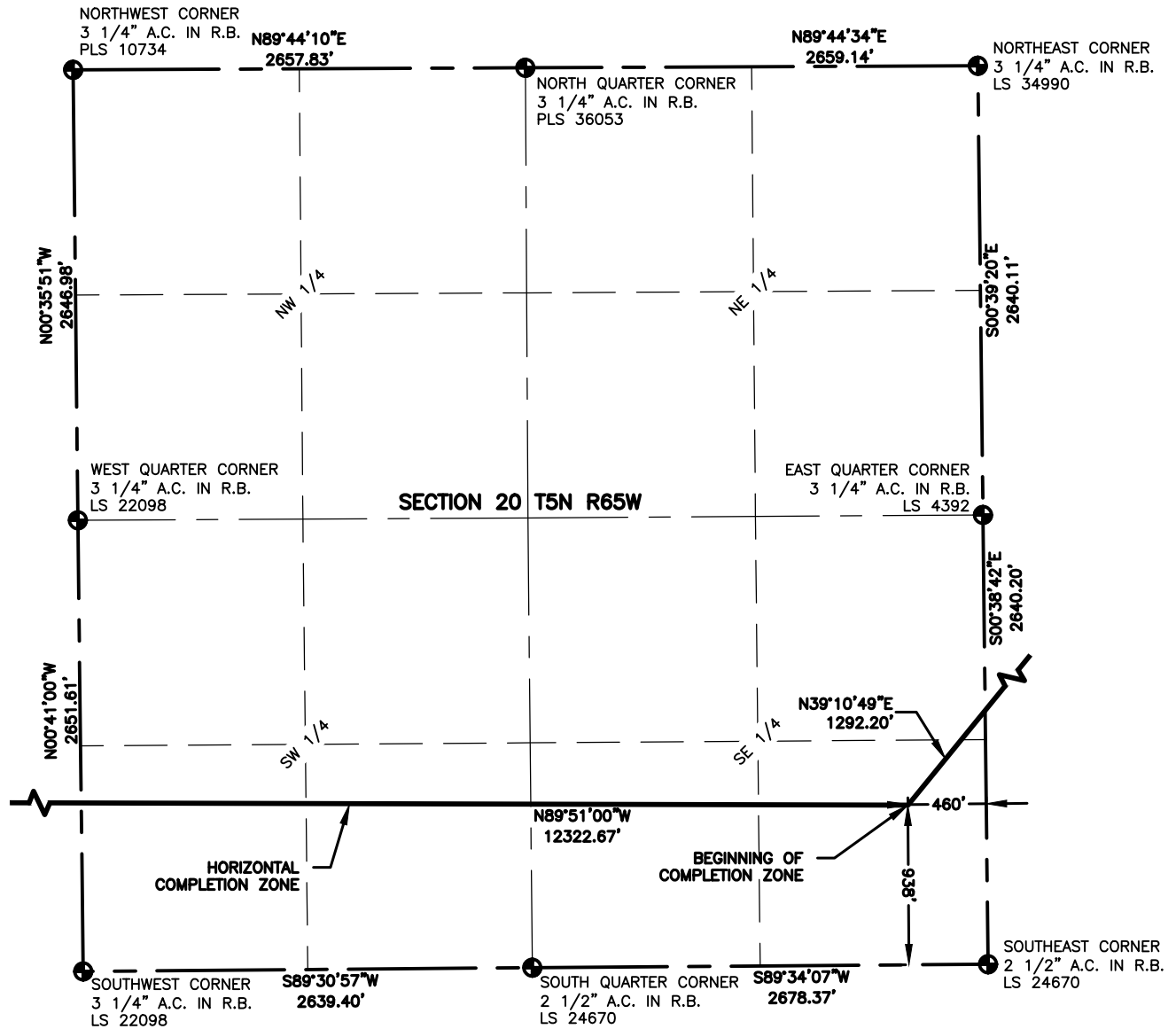
DATE
01/17/17
P:\Engineering\0216012 Andrey

COGCC ID
0216012

PROJECT - TASK NUMBER
21-I\DRAWINGS\EXHIBITS\PRELIMINARY

BOOK AND PAGE
MRI 04 20-25

SURFACE - LOCATION
NW/4 SW/4 SEC 21 T5N R65W



LEGEND

- ALIQUOT CORNER
- ⊙ PROPOSED WELL
- ⊙ BOTTOM HOLE
- A.C. ALUMINUM CAP
- R.B. RANGE BOX

NOTES:

- DISTANCES ARE MEASURED PERPENDICULAR TO NEAREST SECTION LINE AND ARE SHOWN ON THE SAME SIDE OF THE SECTION LINE WHERE THE WELL IS LOCATED.
- THIS MAP DOES NOT REPRESENT A MONUMENTED BOUNDARY SURVEY. SIXTEENTH CORNER LOCATIONS ARE COMPUTED, UNLESS OTHERWISE NOTED.
- BOTTOM HOLE LOCATIONS AND HORIZONTAL COMPLETION ZONE PROVIDED BY OTHERS.



0 1000
SCALE: 1" = 1000'
U.S. SURVEY FEET



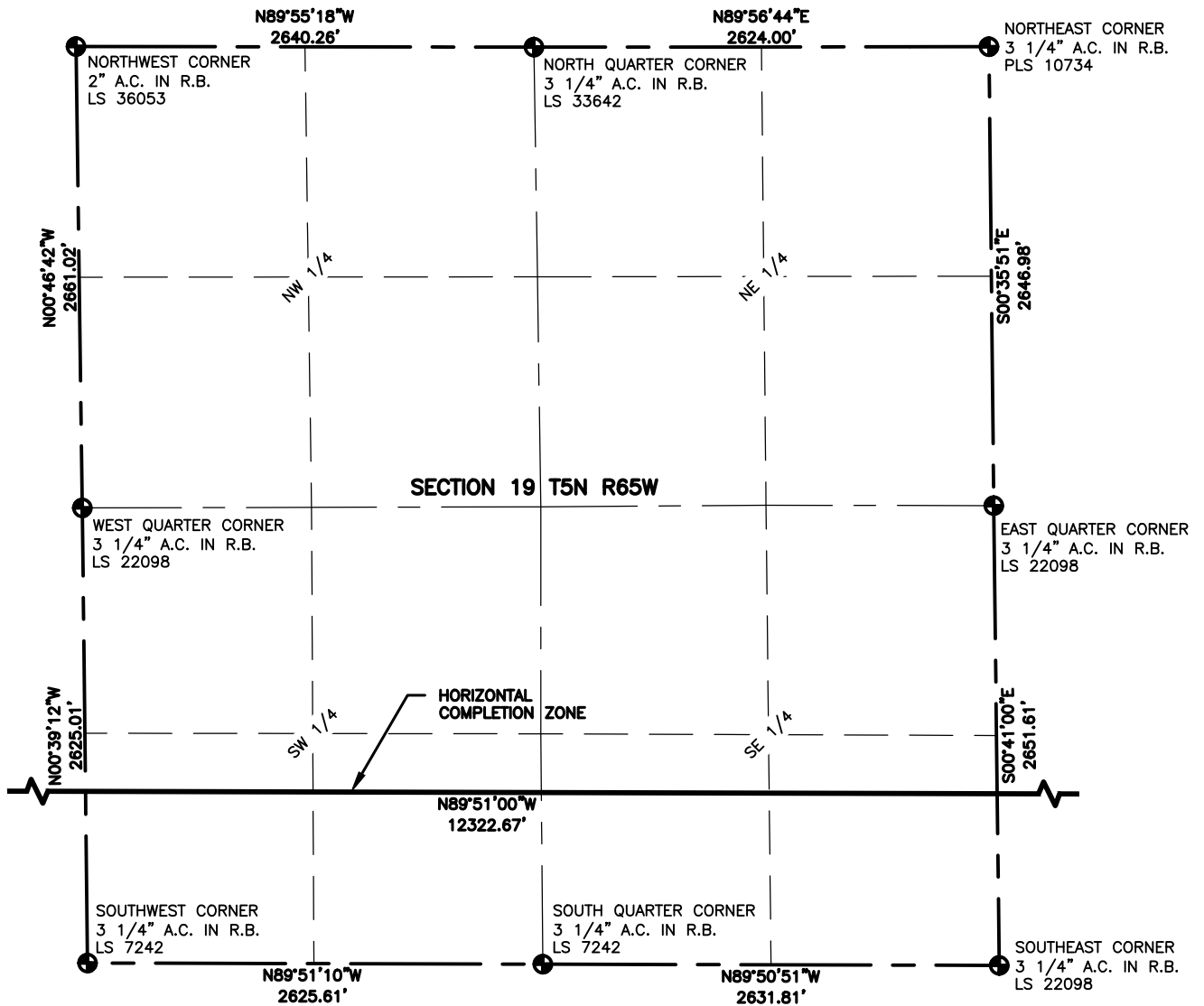
LAMP RYNEARSON
& ASSOCIATES

4715 Innovation Drive 970.226.0342 | P
Fort Collins, CO 80525 970.226.0879 | F
www.LRA-Inc.com

PROPOSED WELL LOCATION EXHIBIT
AD-DAIRY 4-20-24
2 OF 4

DRAWN BY	DATE	COGCC ID	PROJECT - TASK NUMBER	BOOK AND PAGE
JMC	01/17/17	0216012	21-1-DRAWINGS\EXHIBITS\PRELIMINARY PLAT	MRI_04 20-25

SURFACE - LOCATION
NW/4 SW/4 SEC 21 T5N R65W

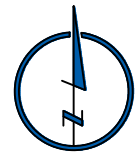


LEGEND

- ALIQUOT CORNER
- ⊙ PROPOSED WELL
- ⊙ BOTTOM HOLE
- A.C. ALUMINUM CAP
- R.B. RANGE BOX

NOTES:

- DISTANCES ARE MEASURED PERPENDICULAR TO NEAREST SECTION LINE AND ARE SHOWN ON THE SAME SIDE OF THE SECTION LINE WHERE THE WELL IS LOCATED.
- THIS MAP DOES NOT REPRESENT A MONUMENTED BOUNDARY SURVEY. SIXTEENTH CORNER LOCATIONS ARE COMPUTED, UNLESS OTHERWISE NOTED.
- BOTTOM HOLE LOCATIONS AND HORIZONTAL COMPLETION ZONE PROVIDED BY OTHERS.



0 1000
SCALE: 1"= 1000'
U.S. SURVEY FEET



LAMP RYNEARSON
& ASSOCIATES

4715 Innovation Drive 970.226.0342 | P
Fort Collins, CO 80525 970.226.0879 | F
www.LRA-Inc.com

PROPOSED WELL LOCATION EXHIBIT
AD-DAIRY 4-20-24
3 OF 4

DRAWN BY
JMC
PATH\FILENAME

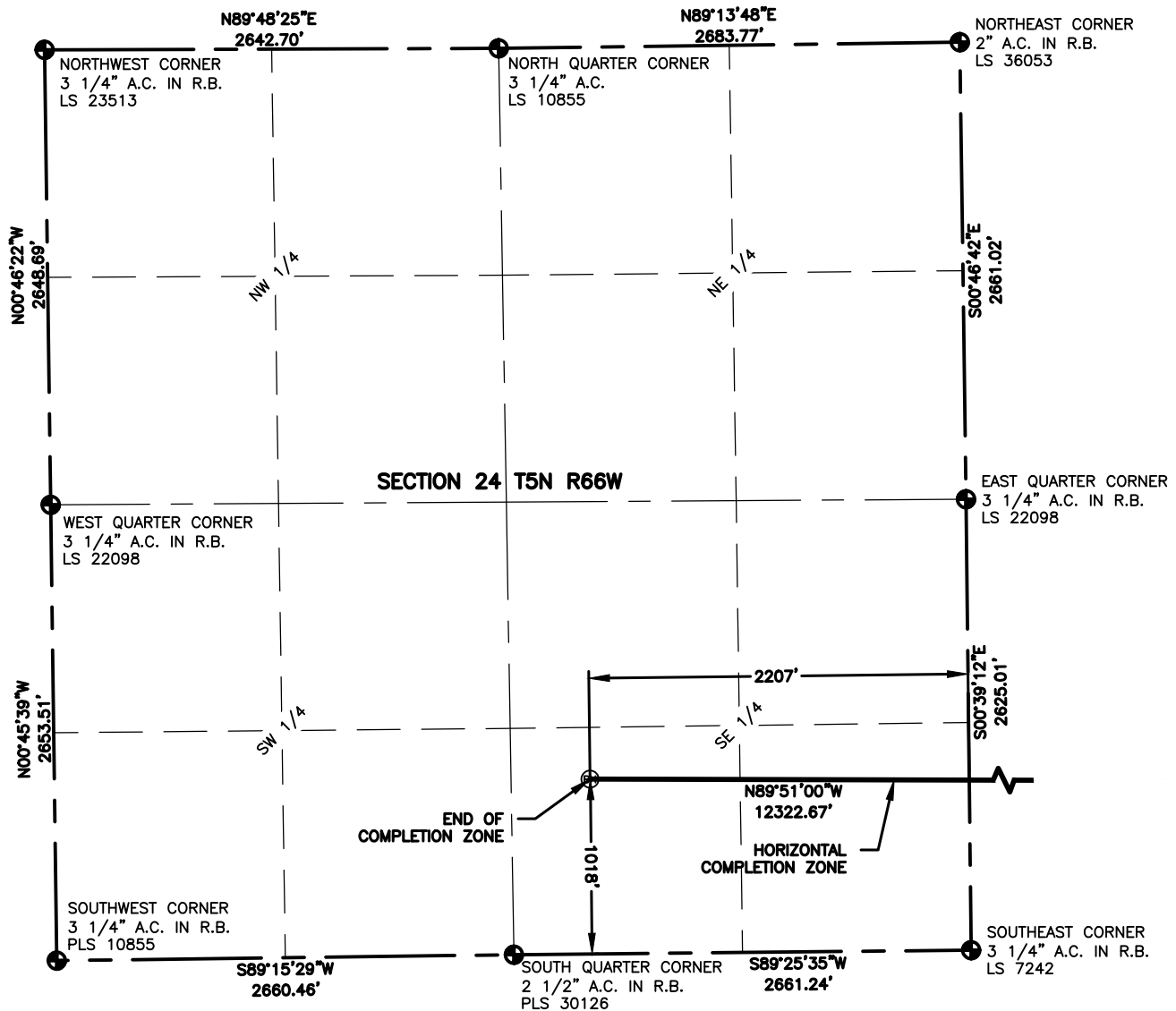
DATE
01/17/17
P:_Engineering\0216012 Andrey EXHIBITS\0216012 EXHIBIT 4 - 3.dwg

COGCC ID
0216012

PROJECT - TASK NUMBER
21-I\DRAWINGS\EXHIBITS\PRELIMINARY PLAT

BOOK AND PAGE
MRI_04 20-25

SURFACE - LOCATION
NW/4 SW/4 SEC 21 T5N R65W



NOTES:

- DISTANCES ARE MEASURED PERPENDICULAR TO NEAREST SECTION LINE AND ARE SHOWN ON THE SAME SIDE OF THE SECTION LINE WHERE THE WELL IS LOCATED.
- THIS MAP DOES NOT REPRESENT A MONUMENTED BOUNDARY SURVEY. SIXTEENTH CORNER LOCATIONS ARE COMPUTED, UNLESS OTHERWISE NOTED.
- BOTTOM HOLE LOCATIONS AND HORIZONTAL COMPLETION ZONE PROVIDED BY OTHERS.



0 1000

SCALE: 1" = 1000'
U.S. SURVEY FEET



LAMP RYNEARSON
& ASSOCIATES

4715 Innovation Drive 970.226.0342 | P
Fort Collins, CO 80525 970.226.0879 | F
www.LRA-Inc.com

PROPOSED WELL LOCATION EXHIBIT
AD-DAIRY 4-20-24
4 OF 4

DRAWN BY
JMC
PATH\FILENAME

DATE
01/17/17

COGCC ID

PROJECT - TASK NUMBER

BOOK AND PAGE

SURFACE - LOCATION
NW/4 SW/4 SEC 21 T5N R65W

P:_Engineering\0216012 Andrey 21-1\DRAWINGS\EXHIBITS\PRELIMINARY PLAT

0216012

MRI_04 20-25