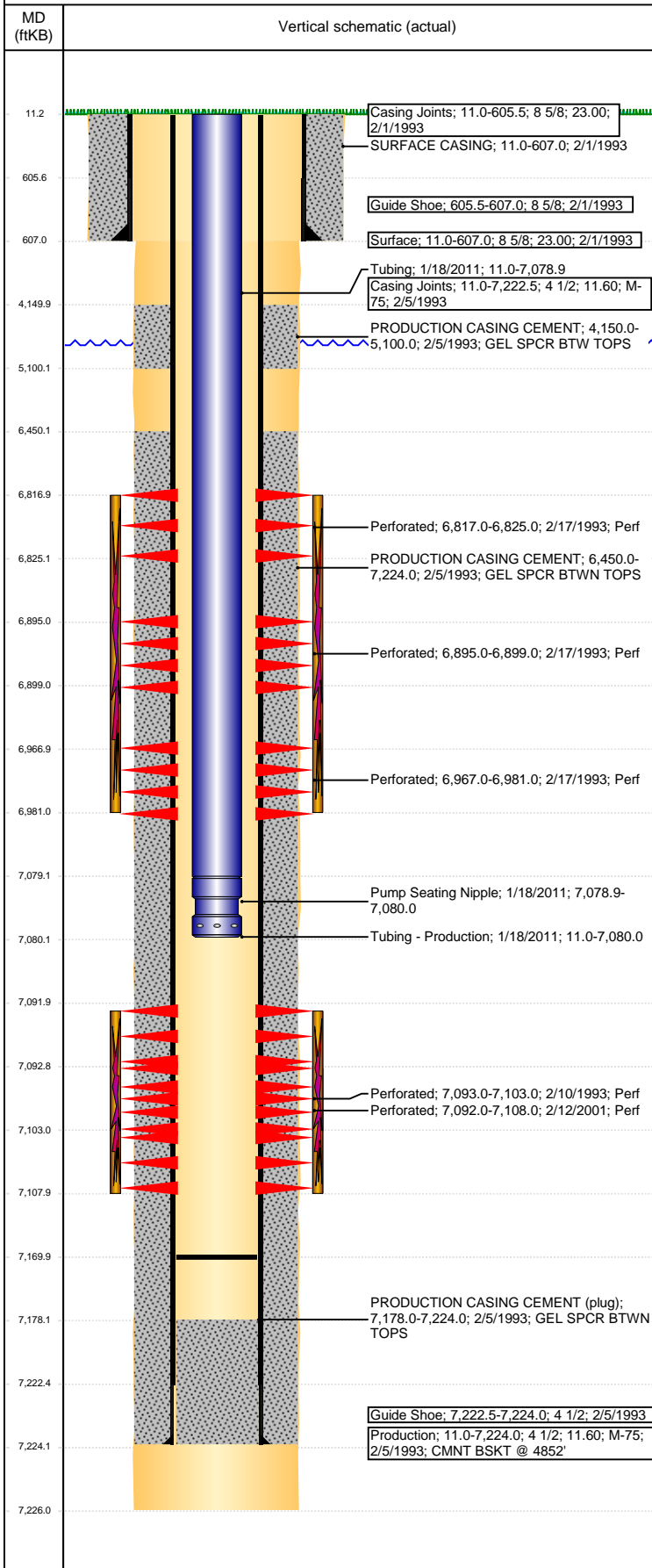


**Well Name: BOCKIUS 34-07G**

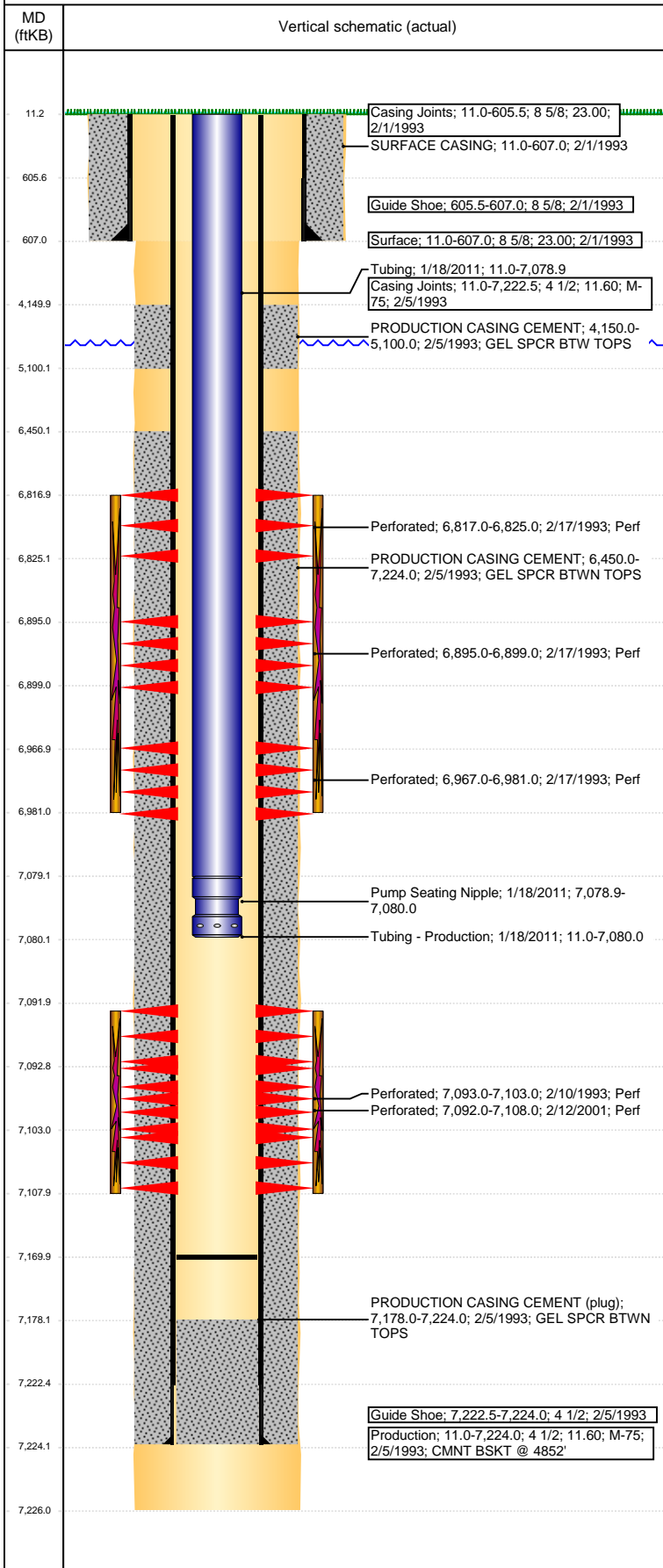
VERTICAL - ORIGINAL HOLE, 2/15/2017 1:44:22 PM



Well Header						
API 05-123-16498		Business Unit DJ BASIN		District 15		Well Config VERTICAL
Original KB Elevation (ft) 4,764		KB - GL / MSL (ftKB) 11.00		Spud Date 1/31/1993		P & A Date
Comment CODELL REFRAC 2/2001, FRAC'D INTO 34-2G						
Directions To Well RDS 40 & 43, EAST 5/10, SOUTH 5/10, EAST ACROOS CATTLE GAURD 1/10, NORTH INTO.						
Congressional Location						
Quarter 3 SW	Quarter 4 NE	Section 34	Township 4	Twnshp N/S Dir N	Range 65	Range E/W Dir W
Bottom Hole Location						
North-South Distance (ft)		From N or S Line		East-West Distance (ft)		From E or W Line
Plug Back Total Depths						
Date	Depth (ftKB)	Method		Com		
2/5/1993	7,178.0	CASED HOLE LOG		DEPTH LOGGER ON CBL		
2/22/2001	7,122.0	TAG		LANDED TBG		
1/18/2011	7,170.0	TUBING TALLY		62' OF RAT HOLE		
Wellbore Sections						
Section Des		Size (in)		Act Top, MD (ftKB)		Act Btm, MD (ftKB)
SURFACE		12 1/4		11		607
PRODUCTION		7 7/8		607		7,226
Zone Statuses						
Zone Name	Status Date	Status	Fluid Type	Job	Prod Method	
CODELL	2/23/1993	PR		DRILLING - OR...		
CODELL	2/26/2001	PR		RE-FRAC, 2/7/...		
CODELL	2/24/2011	PR		TRI-FRAC, 1/6/...		
NIOBRARA	2/23/1993	PR		DRILLING - OR...		
Casing Strings						
Surface, 607.0ftKB						
Casing Description Surface	Run Date 2/1/1993	OD (in) 8 5/8	Wt/Len (l... 23.00	Grade	Top, MD (ft... 11.0	MD (ftKB) 607.0
Production, 7,224.0ftKB						
Casing Description Production	Run Date 2/5/1993	OD (in) 4 1/2	Wt/Len (l... 11.60	Grade M-75	Top, MD (ft... 11.0	MD (ftKB) 7,224.0
Cement						
Description SURFACE CASING				Top Depth (ftKB) 11.0		Bottom Depth (ftKB) 607.0
Description PRODUCTION CASING CEMENT				Top Depth (ftKB) 4,150.0		Bottom Depth (ftKB) 5,100.0
Description PRODUCTION CASING CEMENT				Top Depth (ftKB) 6,450.0		Bottom Depth (ftKB) 7,224.0
Tubing Strings						
Tubing Description Tubing - Production	Run Date 2/22/2001	String... 2 3/8	ID (in) 4.70	Wt (lb/ft) 4.70	Grade N-80	Len (ft) 7,049.00
Tubing Description Tubing - Frac string	Run Date 1/10/2011	String... 2 7/8	ID (in) 2.44	Wt (lb/ft) 6.50	Grade N-80	Len (ft) 7,030.42
Tubing Description Tubing - Production	Run Date 1/18/2011	String... 2 3/8	ID (in) 2.00	Wt (lb/ft) 4.70	Grade J-55	Len (ft) 7,069.02
Tubing Components						
Item Des	OD (in)	Wt (lb/ft)	Grade	Jts	Len (ft)	Btm (TVD) (ftKB)
Tubing	2 3/8	4.70	J-55	231	7,067.92	7,078.9
Pump Seating Nipple	2 3/8	4.70	J-55	1	1.10	7,080.0
Other In Hole						
Run Date	Des			OD (in)	Top (ftKB)	Btm (ftKB)
Logs						
Date	Type				Top, MD (ftKB)	Btm, MD (ftKB)
2/4/1993	COMPENSATED DENSI				4,310.0	7,224.0
2/4/1993	INDUCTION				606.0	7,226.0
2/4/1993	SONIC CEMENT				3,950.0	7,173.0
11/2/2010	GYRO				11.0	7,050.0

**Well Name: BOCKIUS 34-07G**

VERTICAL - ORIGINAL HOLE, 2/15/2017 1:44:23 PM



Perforation Data					
Linked Zone	Brnch/St g	Sum of Entered Shot Total	Top (ftKB)	Btm (ftKB)	Date
NIOBRARA, ORIGINAL HOLE	A	8	6,817.00	6,825.00	2/17/1993
NIOBRARA, ORIGINAL HOLE	B	10	6,895.00	6,899.00	2/17/1993
NIOBRARA, ORIGINAL HOLE	C	6	6,967.00	6,981.00	2/17/1993
CODELL, ORIGINAL HOLE		64	7,092.00	7,108.00	2/12/2001
CODELL, ORIGINAL HOLE		20	7,093.00	7,103.00	2/10/1993
<b>Total (Sum)</b>		<b>108</b>			

Stimulation Intervals		
Start Date	Primary Job Type	
2/11/1993	DRILLING - ORIGINAL	
Technical Result	Tech Result Details	Tech Result Note
Comment		
Start Date	Primary Job Type	
2/20/2001	RE-FRAC	
Technical Result	Tech Result Details	Tech Result Note
Comment		
Start Date	Primary Job Type	
1/13/2011	TRI-FRAC	
Technical Result	Tech Result Details	Tech Result Note
Success	According to Plan	
Comment		
(CODELL TRIFRAC): ISIP - 3767 PSI. TREATMENT WENT WELL. POST ISIP - 3940 PSI. AVG NOLTE - 0.07. AVG VISC - 25.5 CP. AVG TEMP - 72.7F. AVG PH - 10.25.		
Start Date	Primary Job Type	
2/18/1993	DRILLING - ORIGINAL	
Technical Result	Tech Result Details	Tech Result Note
Comment		
SCREENED OUT AT END OF 6PPG STAGE		