

0 500 1000 2000

GRAPHIC SCALE IN FEET

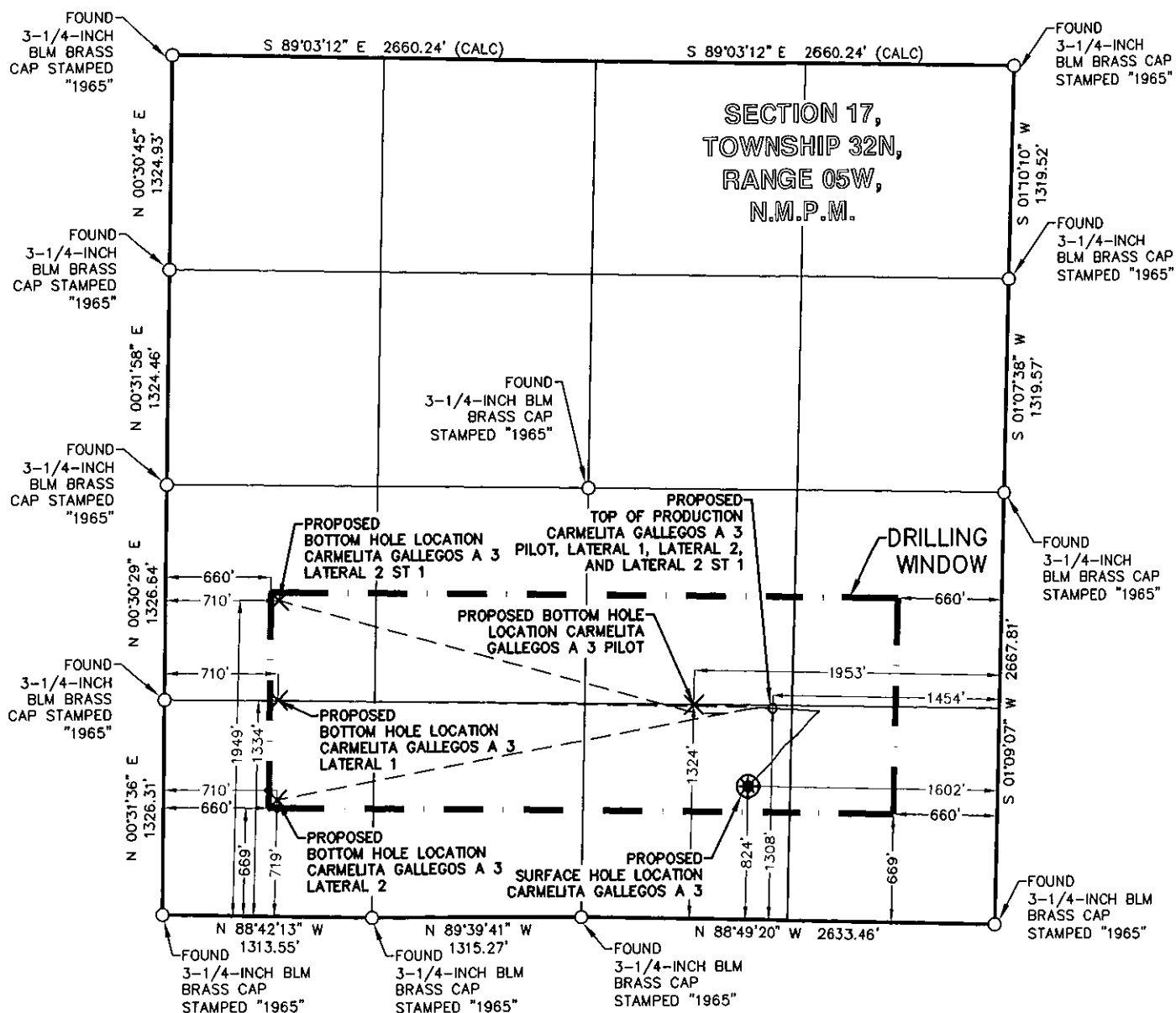
LEGEND

FOUND MONUMENT O

PROPOSED SURFACE HOLE LOCATION *

PROPOSED BOTTOM HOLE LOCATION X

SECTION 17, TOWNSHIP 32N, RANGE 05W, N.M.P.M.



SURVEY NOTES

1. SEE SHEET 2 OF 2 FOR COORDINATE TABLE, SURVEY NOTES, AND SURVEYOR'S CERTIFICATE.



BP AMERICA
PRODUCTION COMPANY
US LOWER 48 ONSHORE

WELL LOCATION PLAT

CARMELITA GALLEGOS A 3

PART OF
SECTION 17, TOWNSHIP 32N, RANGE 05W,
N.M.P.M.,
ARCHULETA COUNTY, COLORADO

DRAWN BY
CFW/RLM

CHECKED BY
RLT

SCALE
1"=1000'

DATE
11/02/2016

SHEET
1 OF 2

REVISION

CARMELITA GALLEGOS A 3 WELLBORE DISTANCES	
SHL TO TOP	964'
TOP TO BHL PILOT	499'
TOP TO BHL LATERAL 1	3,113'
TOP TO BHL LATERAL 2	3,166'
TOP TO BHL LATERAL 2 ST 1	3,203'

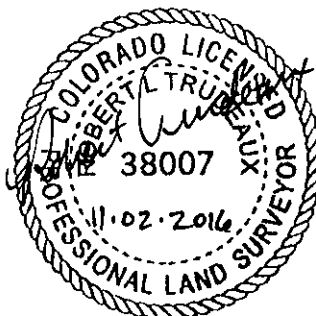
CARMELITA GALLEGOS A 3	CSZ NAD'83	NAD'83	TIES	ELEVATION
PROPOSED SURFACE HOLE LOCATION (SHL)	N (Y) = 1,131,854.11' E (X) = 2,441,795.87'	LAT = 37.01309109°N LON = 107.41181641°W	FSL = 824' FEL = 1602'	EXISTING GROUND 6143.99'
PROPOSED TOP OF PRODUCTION (TOP) PILOT, LAT 1, LAT 2, AND LAT 2 ST 1	N (Y) = 1,132,334.94' E (X) = 2,441,954.01'	LAT = 37.01442024°N LON = 107.41130863°W	FSL = 1308' FEL = 1454'	PROPOSED GRADE 6143.85'
PROPOSED BOTTOM HOLE LOCATION (BHL) PILOT	N (Y) = 1,132,360.98' E (X) = 2,441,455.53'	LAT = 37.01446372°N LON = 107.41301727°W	FSL = 1324' FEL = 1953'	
PROPOSED BOTTOM HOLE LOCATION (BHL) LAT 1	N (Y) = 1,132,406.96' E (X) = 2,438,842.08'	LAT = 37.01444264°N LON = 107.42196907°W	FSL = 1334' FWL = 710'	
PROPOSED BOTTOM HOLE LOCATION (BHL) LAT 2	N (Y) = 1,131,792.26' E (X) = 2,438,836.53'	LAT = 37.01275449°N LON = 107.42194476°W	FSL = 719' FWL = 710'	
PROPOSED BOTTOM HOLE LOCATION (BHL) LAT 2 ST 1	N (Y) = 1,133,021.67' E (X) = 2,438,847.64'	LAT = 37.01613082°N LON = 107.42199335°W	FSL = 1949' FWL = 710'	

SURVEY NOTES

1. BEARING BASIS FOR THIS SURVEY IS BASED ON THE NORTH AMERICAN DATUM OF 1983, COLORADO STATE PLANE COORDINATE SYSTEM, COLORADO SOUTH, ZONE 0503.
2. ELEVATION BASIS FOR THIS SURVEY IS BASED ON THE NORTH AMERICAN VERTICAL DATUM OF 1988 (GEOID12A).
3. SURVEYED IN THE FIELD ON 10/17/2016.
4. BEARINGS AND DISTANCE SHOWN ARE MEASURED IN THE FIELD UNLESS OTHERWISE NOTED.
5. ALL MEASURED DISTANCES SHOWN ARE GRID USING A COMBINED SCALE FACTOR 0.99974989.
6. GPS INSTRUMENT OPERATOR: CONNER MAHOSKEY
7. GPS PDOP VALUE: 2.0

SURVEYOR'S CERTIFICATE

I, ROBERT L. TRUDEAUX, A PROFESSIONAL LAND SURVEYOR IN THE STATE OF COLORADO, DO HEREBY CERTIFY THAT THIS PLAT WAS PREPARED FROM AN ACTUAL SURVEY PERFORMED BY ME OR UNDER MY DIRECT RESPONSIBILITY, SUPERVISION AND CHECKING, AND IS TRUE AND CORRECT TO THE BEST OF MY KNOWLEDGE AND BELIEF BASED ON THE STANDARDS OF CARE OF PROFESSIONAL LAND SURVEYORS PRACTICING IN THE STATE OF COLORADO. THIS DOES NOT REPRESENT A LAND SURVEY PLAT, IMPROVEMENT SURVEY PLAT, OR MONUMENTED LAND SURVEY AS DEFINED BY COLORADO REVISED STATUTES 38-51-102 AND CANNOT BE RELIED UPON TO DETERMINE OWNERSHIP. THIS SURVEY IS NOT A GUARANTY OR WARRANTY, EITHER EXPRESSED OR IMPLIED.



	BP AMERICA PRODUCTION COMPANY US LOWER 48 ONSHORE
	WELL LOCATION PLAT
CARMELITA GALLEGOS A 3 PART OF SECTION 17, TOWNSHIP 32N, RANGE 05W, N.M.P.M., ARCHULETA COUNTY, COLORADO	

DRAWN BY CFW/RLM	CHECKED BY RLT	SCALE N/A	DATE 11/02/2016	SHEET 2 OF 2	REVISION
---------------------	-------------------	--------------	--------------------	-----------------	----------