

LEGEND:

PROPOSED LOCATION



UELS, LLC
 Corporate Office * 85 South 200 East
 Vernal, UT 84078 * (435) 789-1017



BISON EXPLORATION

DIBC 3-65 18-13 PAD
 SW 1/4 NE 1/4, SECTION 18, T3S, R65W, 6th P.M.
 ADAMS COUNTY, COLORADO

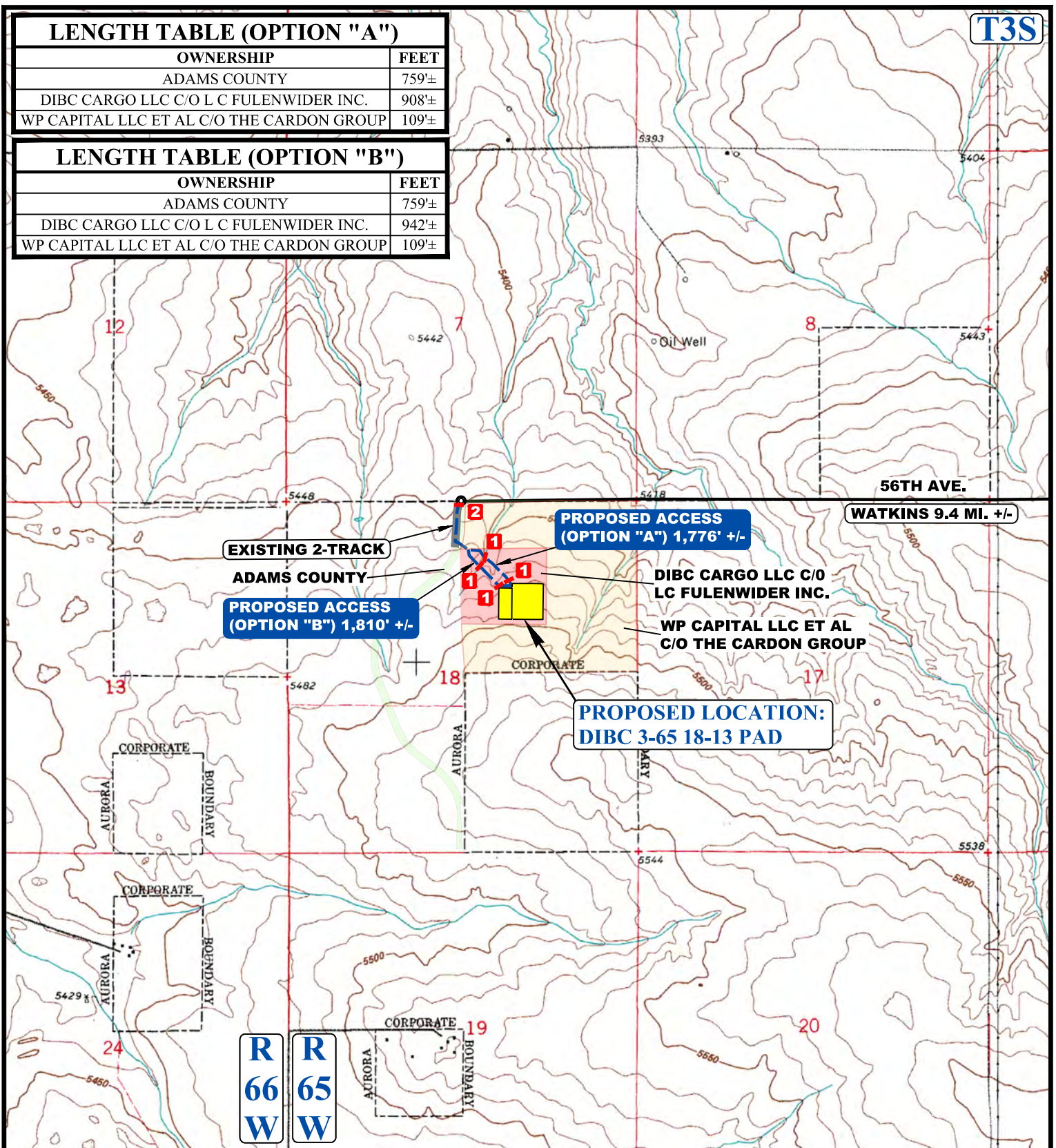
SURVEYED BY	G.W., C.S.M.	12-27-16	SCALE
DRAWN BY	J.L.G.	12-30-16	1 : 100,000
ACCESS ROAD MAP			TOPO A

LENGTH TABLE (OPTION "A")

OWNERSHIP	FEET
ADAMS COUNTY	759'±
DIBC CARGO LLC C/O L C FULENWIDER INC.	908'±
WP CAPITAL LLC ET AL C/O THE CARDON GROUP	109'±

LENGTH TABLE (OPTION "B")

OWNERSHIP	FEET
ADAMS COUNTY	759'±
DIBC CARGO LLC C/O L C FULENWIDER INC.	942'±
WP CAPITAL LLC ET AL C/O THE CARDON GROUP	109'±



NOTE: PARCEL DATA SHOWN HAS BEEN OBTAINED FROM VARIOUS SOURCES AND SHOULD BE USED FOR MAPPING, GRAPHIC AND PLANNING PURPOSES ONLY. NO WARRANTY IS MADE BY UINTAH ENGINEERING AND LAND SURVEYING (UELS) FOR ACCURACY OF THE PARCEL DATA.

LEGEND:

- EXISTING ROAD
- EXISTING 2-TRACK
- - - PROPOSED ROAD
- 1 INSTALL 18" CULVERT
- 2 INSTALL 24" CULVERT



UELS, LLC
Corporate Office * 85 South 200 East
Vernal, UT 84078 * (435) 789-1017



BISON EXPLORATION

DIBC 3-65 18-13 PAD
SW 1/4 NE 1/4, SECTION 18, T3S, R65W, 6th P.M.
ADAMS COUNTY, COLORADO

SURVEYED BY	G.W., C.S.M.	12-27-16	SCALE
DRAWN BY	J.L.G.	12-30-16	1 : 24,000
ACCESS ROAD MAP			TOPO B