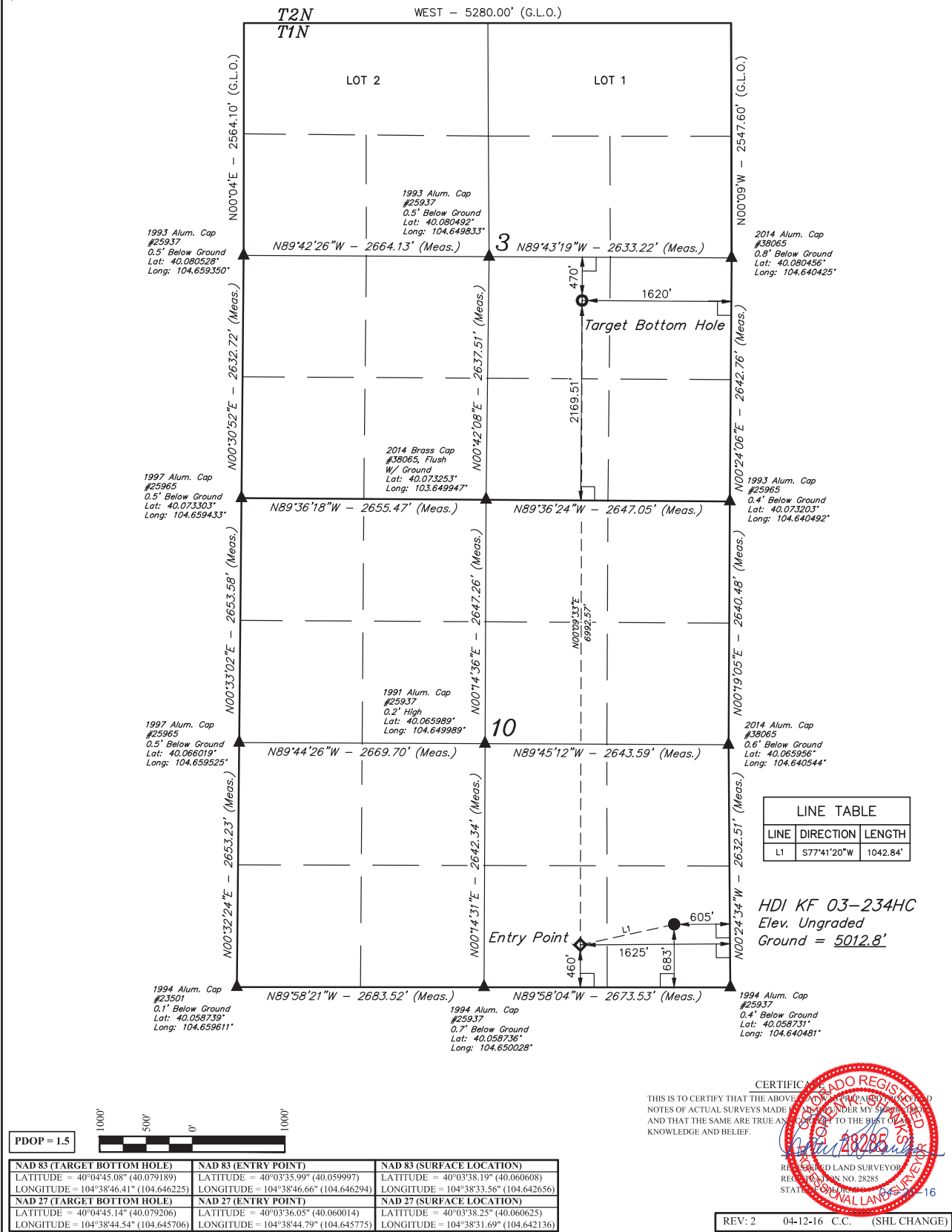


LEGEND:

- = 90° SYMBOL
- = PROPOSED WELLHEAD.
- = TARGET BOTTOM HOLE.
- ▲ = SECTION CORNERS LOCATED. (NAD 83)
- ◆ = ENTRY POINT.

T1N, R65W, 6th P.M.



BASIS OF BEARINGS
BASIS OF BEARINGS IS A G.P.S. OBSERVATION

BASIS OF ELEVATION
USGS COOPERATIVE BASE NETWORK CONTROL STATION, DESIGNATION "HUDSON CC".
NGS DATA SHEET LISTS THE NAVD 88 ELEVATION AS BEING 4999 FEET.



UELS, LLC
Corporate Office * 85 South 200 East
Vernal, UT 84078 * (435) 789-1017



GREAT WESTERN OPERATING COMPANY

HDI KF 03-234HC
SE 1/4 SE 1/4, SECTION 10, T1N, R65W, 6th P.M.
WELD COUNTY, COLORADO

SURVEYED BY	DATE		
DALLAS NIELSEN, C.M.	02-17-16		
DRAWN BY	DATE		
L.C.S.	02-24-16		
SCALE	1" = 1000'		
WELL LOCATION PLAT			

CERTIFICATE OF RECORD
THIS IS TO CERTIFY THAT THE ABOVE IS A TRUE AND CORRECT COPY OF THE NOTES OF ACTUAL SURVEYS MADE BY THE SURVEYOR UNDER MY SUPERVISION AND THAT THE SAME ARE TRUE AND CORRECT TO THE BEST OF MY KNOWLEDGE AND BELIEF.

RECORDED LAND SURVEYOR
RECORDING NO. 28285
STATE OF COLORADO
JAN 12-16

REV: 2 04-12-16 C.C. (SHL CHANGE)