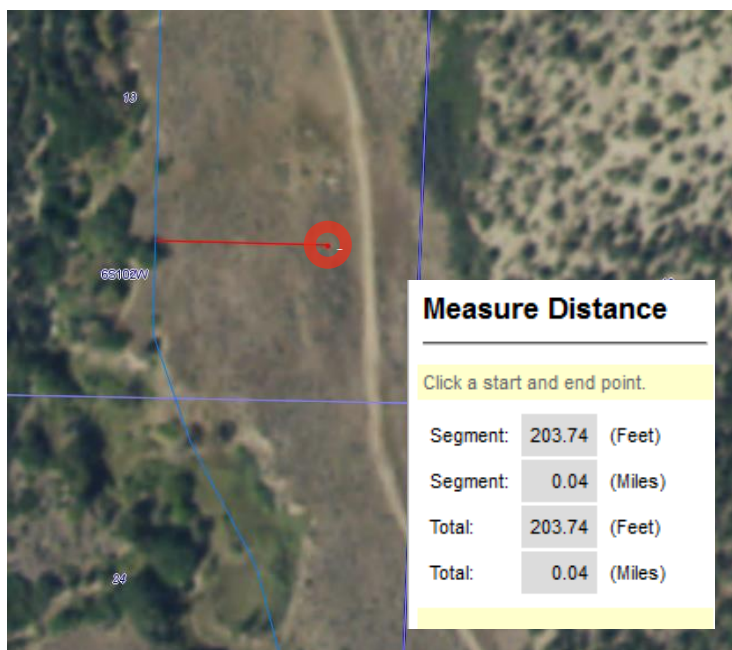
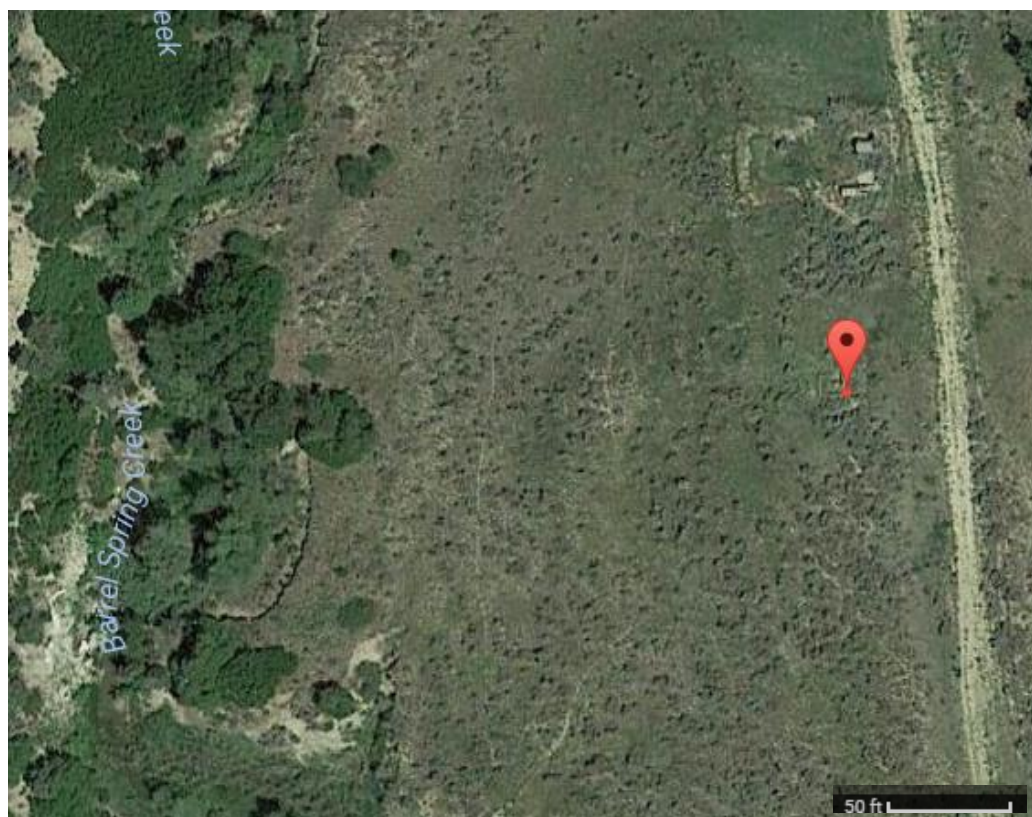


Aerial Photograph of the CALF CANYON 24-2
LOCATION: SESE Section 13 T 6S R 102W

 Indicates the Well as marked on the COGCC GIS Online

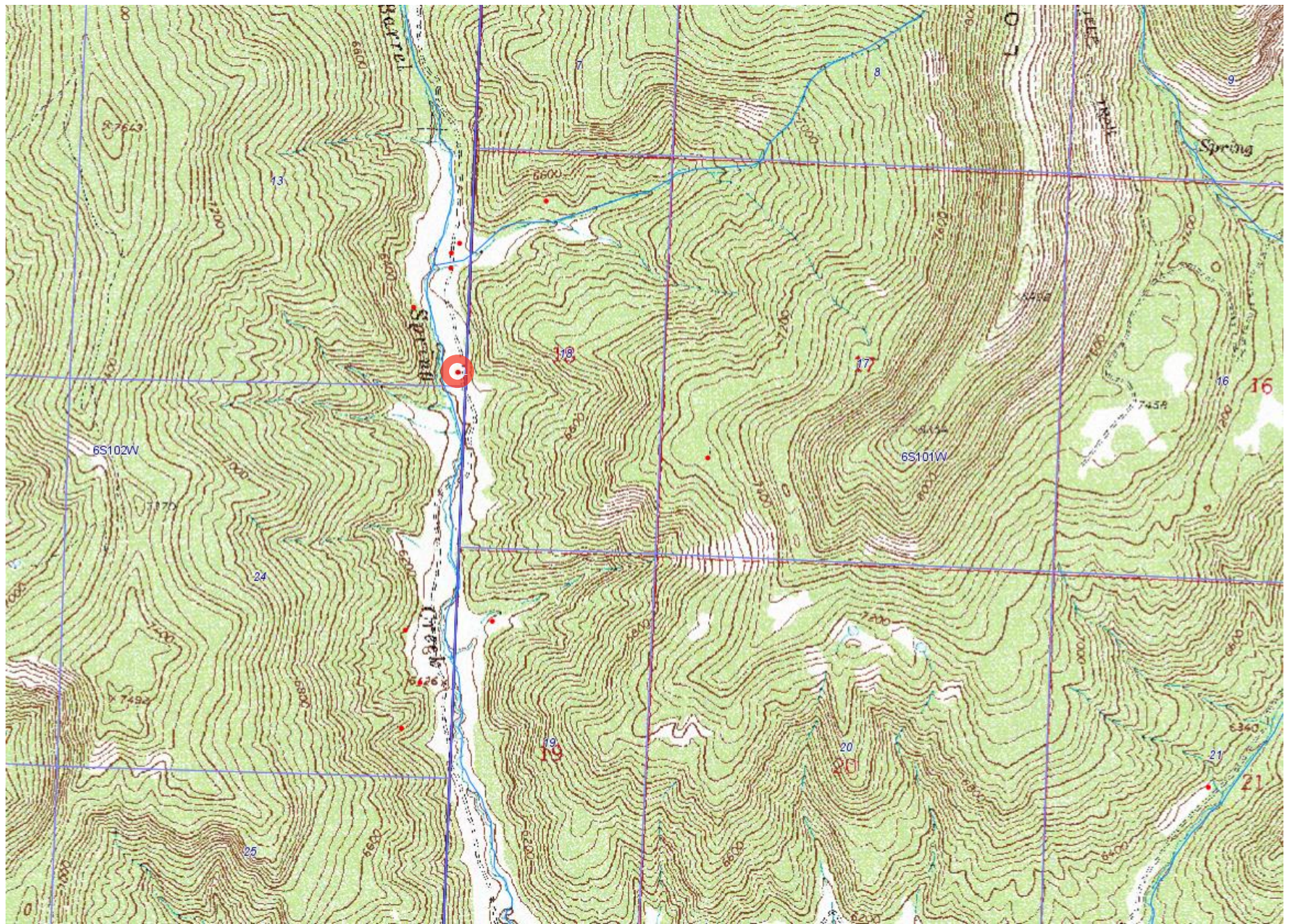


Measured Distance to Barrel Spring Creek,
approximately 204ft at the closest lateral point.

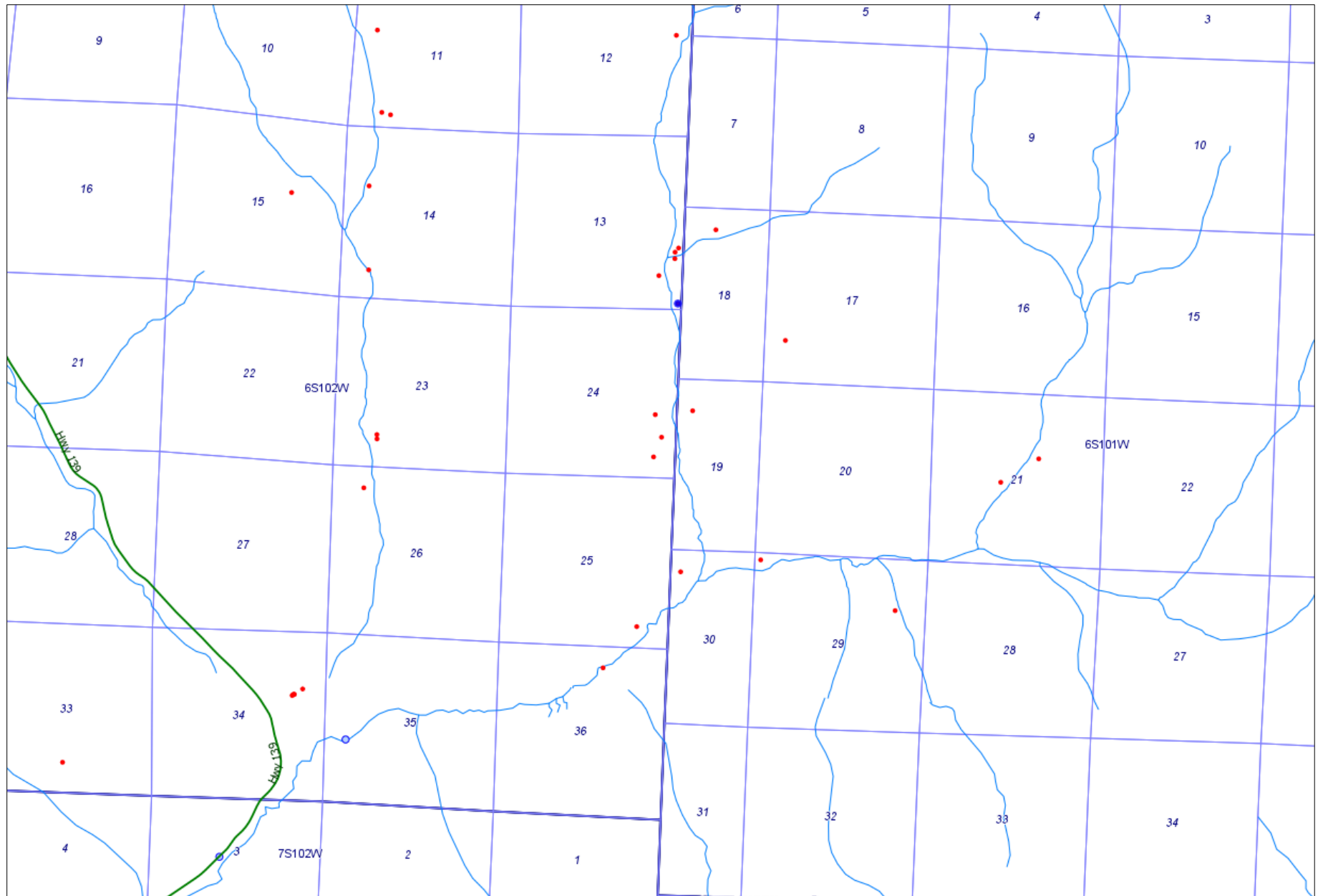


More detailed Aerial View of the location, the following coordinates are
marked: LAT 39.532743, LONG -108.707175

Approx. Location for the Wellhead as Drilled.



TOPOS 24k Layer – COGCC GIS Online
Calf Canyon 24-2 (Red Circle/Target) LOCATION: SESE Section 13 T 6S R 102W



Water Resources Layer As Marked on the COGCC GIS Online

Rivers/Streams marked by light blue lines, No Lakes indicated in mapped section above.

Water Wells marked by light blue outlined circle (closest water well in Section 35 T 6S R 102W, several miles from the Calf Canyon 24-2)

Calf Canyon 24-2 Marked by dark blue circle. LOCATION: SESE Section 13 T 6S R 102W