

Caerus Oil and Gas LLC

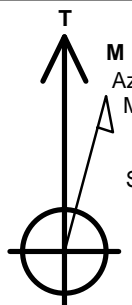
Well Name: **K&H Ranches 1-661-6004XCDH**

Surface Location: K&H Ranches MN 1-661 North Half Pad Sec.1-T6N-R67W
North American Datum 1983 , US State Plane 1983, Colorado Northern Zone
Ground Elevation: 4750.0

+N/-S +E/-W Northing Easting Latitude Longitude Slot
0.0 0.0 1431547.35 3372103.55 40.510291 -104.161723
Original Well Elev WELL @ 4780.0ft (Original Well Elev)

DESIGN TARGET DETAILS

Name	TVD	+N/-S	+E/-W	Shape
SHL 100'FSL & 1369'FWL, Sec.1	1.0	0.0	0.0	Point
BHL 460'FNL & 2086'FWL, Sec.36	6417.0	9922.0	613.6	Point
LPL 669'FSL & 2084'FWL, Sec.1	6420.3	573.1	710.1	Point



Azimuths to True North
Magnetic North: 7.91°

Magnetic Field
Strength: 52755.5snT
Dip Angle: 67.07°
Date: 2/23/2016
Model: IGRF2010

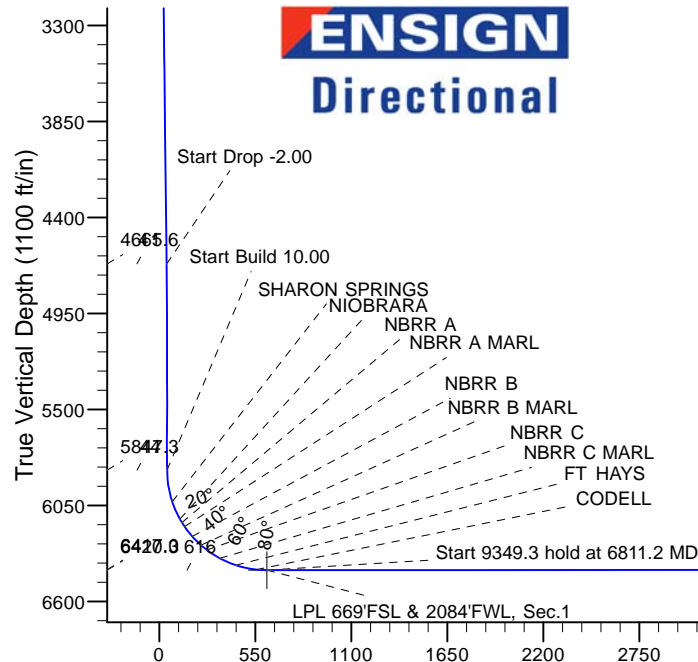
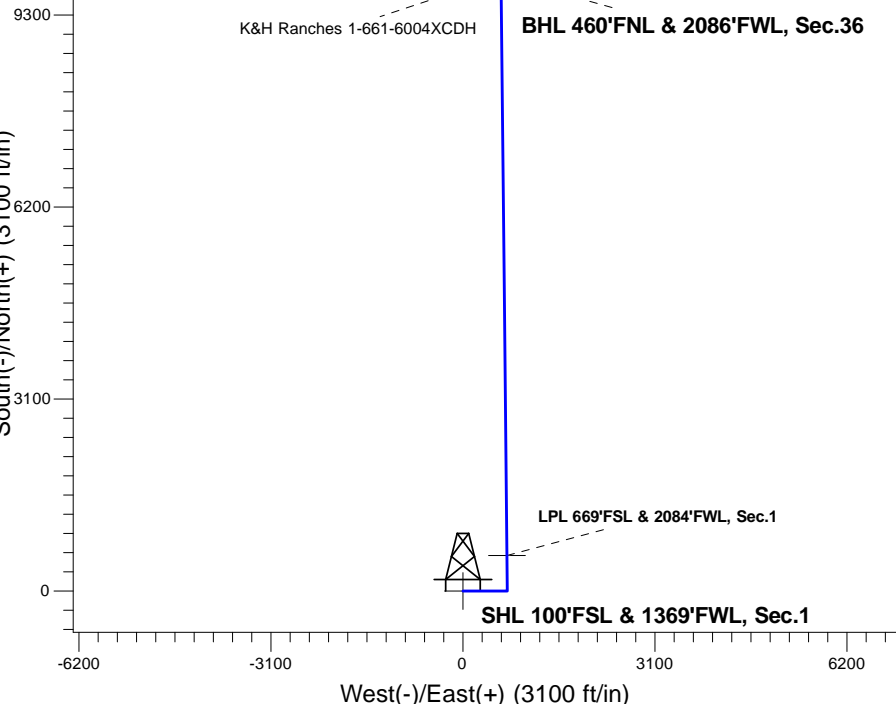
ANNOTATIONS

TVD	MD	Annotation
800.0	800.0	Start Build 1.50
4665.6	4726.1	Start Drop -2.00
5847.3	5911.0	Start Build 10.00
6420.3	6811.2	Start 9349.3 hold at 6811.2 MD
6417.0	16160.5	TD at 16160.5

K&H Ranches MN 1-661 North Half Pad Sec.1-T6N-R67W
K&H Ranches 1-661-6004XCDH
Plan #1 (2-23-16)
16:31, February 25 2016

South(-)/North(+) (3100 ft/in)

West(-)/East(+) (3100 ft/in)



SECTION DETAILS

Sec	MD	Inc	Azi	TVD	+N/-S	+E/-W	Dleg	TFace	Vsect	Target
1	0.0	0.00	0.00	0.0	0.0	0.0	0.00	0.00	0.0	
2	800.0	0.00	0.00	800.0	0.0	0.0	0.00	0.00	0.0	
3	1516.7	10.75	90.00	1512.5	0.0	67.0	1.50	90.00	4.1	
4	4726.1	10.75	90.00	4665.6	0.0	665.7	0.00	0.00	41.1	
5	5263.7	0.00	0.00	5200.0	0.0	716.0	2.00	180.00	44.2	
6	5911.0	0.00	0.00	5847.3	0.0	716.0	0.00	0.00	44.2	
7	6811.2	90.02	359.41	6420.3	573.1	710.1	10.00	359.41	615.9	
8	16160.5	90.02	359.41	6417.0	9922.0	613.6	0.00	0.00	9940.9	BHL 460'FNL & 2086'FWL, Sec.36

BHL 460'FNL & 2086'FWL, Sec.36

TD at 16160.5

Vertical Section at 3.54° (1100 ft/in)



Directional

Caerus Oil and Gas LLC

SEC.1-T6N-R61W

K&H Ranches MN 1-661 North Half Pad Sec.1-T6N-R67W

K&H Ranches 1-661-6004XCDH

Wellbore #1

Plan: Plan #1 (2-23-16)

Standard Planning Report

25 February, 2016

Database:	US_EDM	Local Co-ordinate Reference:	Well K&H Ranches 1-661-6004XCDH
Company:	Caerus Oil and Gas LLC	TVD Reference:	WELL @ 4780.0ft (Original Well Elev)
Project:	SEC.1-T6N-R61W	MD Reference:	WELL @ 4780.0ft (Original Well Elev)
Site:	K&H Ranches MN 1-661 North Half Pad Sec.1-T6N-R67W	North Reference:	True
Well:	K&H Ranches 1-661-6004XCDH	Survey Calculation Method:	Minimum Curvature
Wellbore:	Wellbore #1		
Design:	Plan #1 (2-23-16)		

Project	SEC.1-T6N-R61W, Weld County, CO		
Map System:	US State Plane 1983	System Datum:	Mean Sea Level
Geo Datum:	North American Datum 1983		Using Well Reference Point
Map Zone:	Colorado Northern Zone		Using geodetic scale factor

Site		K&H Ranches MN 1-661 North Half Pad Sec.1-T6N-R67W			
Site Position:		Northing:	1,431,544.20 usft	Latitude:	40.510288
From:	Lat/Long	Easting:	3,371,953.57 usft	Longitude:	-104.162263
Position Uncertainty:	0.0 ft	Slot Radius:	13-3/16 "	Grid Convergence:	0.86

Well	K&H Ranches 1-661-6004XCDH					
Well Position	+N/-S	0.9 ft	Northing:	1,431,547.35 usft	Latitude:	40.510291
	+E/-W	150.0 ft	Easting:	3,372,103.54 usft	Longitude:	-104.161723
Position Uncertainty		0.0 ft	Wellhead Elevation:	0.0 ft	Ground Level:	4,750.0 ft

Wellbore	Wellbore #1				
Magnetics	Model Name	Sample Date	Declination (°)	Dip Angle (°)	Field Strength (nT)
	IGRF2010	2/23/2016	7.91	67.07	52,756

Design	Plan #1 (2-23-16)			
Audit Notes:				
Version:	Phase:	PROTOTYPE	Tie On Depth:	0.0
Vertical Section:	Depth From (TVD) (ft)	+N/-S (ft)	+E/-W (ft)	Direction (°)
	0.0	0.0	0.0	3.54

Plan Sections										
Measured Depth (ft)	Inclination (°)	Azimuth (°)	Vertical Depth (ft)	+N/-S (ft)	+E/-W (ft)	Dogleg Rate (°/100usft)	Build Rate (°/100usft)	Turn Rate (°/100usft)	TFO (°)	Target
0.0	0.00	0.00	0.0	0.0	0.0	0.00	0.00	0.00	0.00	
800.0	0.00	0.00	800.0	0.0	0.0	0.00	0.00	0.00	0.00	
1,516.7	10.75	90.00	1,512.5	0.0	67.0	1.50	1.50	0.00	90.00	
4,726.1	10.75	90.00	4,665.6	0.0	665.7	0.00	0.00	0.00	0.00	
5,263.7	0.00	0.00	5,200.0	0.0	716.0	2.00	-2.00	0.00	180.00	
5,911.0	0.00	0.00	5,847.3	0.0	716.0	0.00	0.00	0.00	0.00	
6,811.2	90.02	359.41	6,420.3	573.1	710.1	10.00	10.00	0.00	359.41	
16,160.5	90.02	359.41	6,417.0	9,922.0	613.6	0.00	0.00	0.00	0.00	BHL 460'FNL & 2086'

Database:	US_EDM	Local Co-ordinate Reference:	Well K&H Ranches 1-661-6004XCDH
Company:	Caerus Oil and Gas LLC	TVD Reference:	WELL @ 4780.0ft (Original Well Elev)
Project:	SEC.1-T6N-R61W	MD Reference:	WELL @ 4780.0ft (Original Well Elev)
Site:	K&H Ranches MN 1-661 North Half Pad Sec.1-T6N-R67W	North Reference:	True
Well:	K&H Ranches 1-661-6004XCDH	Survey Calculation Method:	Minimum Curvature
Wellbore:	Wellbore #1		
Design:	Plan #1 (2-23-16)		

Planned Survey									
Measured Depth (ft)	Inclination (°)	Azimuth (°)	Vertical Depth (ft)	+N/-S (ft)	+E/-W (ft)	Vertical Section (ft)	Dogleg Rate (°/100usft)	Build Rate (°/100usft)	Turn Rate (°/100usft)
0.0	0.00	0.00	0.0	0.0	0.0	0.0	0.00	0.00	0.00
1.0	0.00	0.00	1.0	0.0	0.0	0.0	0.00	0.00	0.00
SHL 100'FSL & 1369'FWL, Sec.1									
100.0	0.00	0.00	100.0	0.0	0.0	0.0	0.00	0.00	0.00
200.0	0.00	0.00	200.0	0.0	0.0	0.0	0.00	0.00	0.00
300.0	0.00	0.00	300.0	0.0	0.0	0.0	0.00	0.00	0.00
400.0	0.00	0.00	400.0	0.0	0.0	0.0	0.00	0.00	0.00
500.0	0.00	0.00	500.0	0.0	0.0	0.0	0.00	0.00	0.00
600.0	0.00	0.00	600.0	0.0	0.0	0.0	0.00	0.00	0.00
700.0	0.00	0.00	700.0	0.0	0.0	0.0	0.00	0.00	0.00
800.0	0.00	0.00	800.0	0.0	0.0	0.0	0.00	0.00	0.00
Start Build 1.50									
900.0	1.50	90.00	900.0	0.0	1.3	0.1	1.50	1.50	0.00
1,000.0	3.00	90.00	999.9	0.0	5.2	0.3	1.50	1.50	0.00
1,100.0	4.50	90.00	1,099.7	0.0	11.8	0.7	1.50	1.50	0.00
1,200.0	6.00	90.00	1,199.3	0.0	20.9	1.3	1.50	1.50	0.00
1,300.0	7.50	90.00	1,298.6	0.0	32.7	2.0	1.50	1.50	0.00
1,400.0	9.00	90.00	1,397.5	0.0	47.0	2.9	1.50	1.50	0.00
1,500.0	10.50	90.00	1,496.1	0.0	64.0	3.9	1.50	1.50	0.00
1,516.7	10.75	90.00	1,512.5	0.0	67.0	4.1	1.50	1.50	0.00
1,600.0	10.75	90.00	1,594.3	0.0	82.6	5.1	0.00	0.00	0.00
1,700.0	10.75	90.00	1,692.6	0.0	101.2	6.2	0.00	0.00	0.00
1,800.0	10.75	90.00	1,790.8	0.0	119.9	7.4	0.00	0.00	0.00
1,900.0	10.75	90.00	1,889.1	0.0	138.5	8.6	0.00	0.00	0.00
2,000.0	10.75	90.00	1,987.3	0.0	157.2	9.7	0.00	0.00	0.00
2,100.0	10.75	90.00	2,085.6	0.0	175.8	10.9	0.00	0.00	0.00
2,200.0	10.75	90.00	2,183.8	0.0	194.5	12.0	0.00	0.00	0.00
2,300.0	10.75	90.00	2,282.1	0.0	213.2	13.2	0.00	0.00	0.00
2,400.0	10.75	90.00	2,380.3	0.0	231.8	14.3	0.00	0.00	0.00
2,500.0	10.75	90.00	2,478.5	0.0	250.5	15.5	0.00	0.00	0.00
2,600.0	10.75	90.00	2,576.8	0.0	269.1	16.6	0.00	0.00	0.00
2,700.0	10.75	90.00	2,675.0	0.0	287.8	17.8	0.00	0.00	0.00
2,800.0	10.75	90.00	2,773.3	0.0	306.4	18.9	0.00	0.00	0.00
2,900.0	10.75	90.00	2,871.5	0.0	325.1	20.1	0.00	0.00	0.00
3,000.0	10.75	90.00	2,969.8	0.0	343.7	21.2	0.00	0.00	0.00
3,100.0	10.75	90.00	3,068.0	0.0	362.4	22.4	0.00	0.00	0.00
3,198.7	10.75	90.00	3,165.0	0.0	380.8	23.5	0.00	0.00	0.00
RICHARDS SD									
3,200.0	10.75	90.00	3,166.3	0.0	381.0	23.5	0.00	0.00	0.00
3,300.0	10.75	90.00	3,264.5	0.0	399.7	24.7	0.00	0.00	0.00
3,400.0	10.75	90.00	3,362.7	0.0	418.3	25.8	0.00	0.00	0.00
3,500.0	10.75	90.00	3,461.0	0.0	437.0	27.0	0.00	0.00	0.00
3,600.0	10.75	90.00	3,559.2	0.0	455.7	28.1	0.00	0.00	0.00
3,700.0	10.75	90.00	3,657.5	0.0	474.3	29.3	0.00	0.00	0.00
3,800.0	10.75	90.00	3,755.7	0.0	493.0	30.4	0.00	0.00	0.00
3,900.0	10.75	90.00	3,854.0	0.0	511.6	31.6	0.00	0.00	0.00
4,000.0	10.75	90.00	3,952.2	0.0	530.3	32.7	0.00	0.00	0.00
4,100.0	10.75	90.00	4,050.5	0.0	548.9	33.9	0.00	0.00	0.00
4,200.0	10.75	90.00	4,148.7	0.0	567.6	35.0	0.00	0.00	0.00
4,300.0	10.75	90.00	4,246.9	0.0	586.2	36.2	0.00	0.00	0.00
4,400.0	10.75	90.00	4,345.2	0.0	604.9	37.3	0.00	0.00	0.00
4,500.0	10.75	90.00	4,443.4	0.0	623.5	38.5	0.00	0.00	0.00
4,600.0	10.75	90.00	4,541.7	0.0	642.2	39.6	0.00	0.00	0.00

Database:	US_EDM	Local Co-ordinate Reference:	Well K&H Ranches 1-661-6004XCDH
Company:	Caerus Oil and Gas LLC	TVD Reference:	WELL @ 4780.0ft (Original Well Elev)
Project:	SEC.1-T6N-R61W	MD Reference:	WELL @ 4780.0ft (Original Well Elev)
Site:	K&H Ranches MN 1-661 North Half Pad Sec.1-T6N-R67W	North Reference:	True
Well:	K&H Ranches 1-661-6004XCDH	Survey Calculation Method:	Minimum Curvature
Wellbore:	Wellbore #1		
Design:	Plan #1 (2-23-16)		

Planned Survey									
Measured Depth (ft)	Inclination (°)	Azimuth (°)	Vertical Depth (ft)	+N/-S (ft)	+E/-W (ft)	Vertical Section (ft)	Dogleg Rate (°/100usft)	Build Rate (°/100usft)	Turn Rate (°/100usft)
4,700.0	10.75	90.00	4,639.9	0.0	660.8	40.8	0.00	0.00	0.00
4,726.1	10.75	90.00	4,665.6	0.0	665.7	41.1	0.00	0.00	0.00
Start Drop -2.00									
4,800.0	9.27	90.00	4,738.3	0.0	678.6	41.9	2.00	-2.00	0.00
4,900.0	7.27	90.00	4,837.3	0.0	692.9	42.8	2.00	-2.00	0.00
5,000.0	5.27	90.00	4,936.7	0.0	703.9	43.4	2.00	-2.00	0.00
5,100.0	3.27	90.00	5,036.4	0.0	711.3	43.9	2.00	-2.00	0.00
5,200.0	1.27	90.00	5,136.3	0.0	715.3	44.2	2.00	-2.00	0.00
5,263.7	0.00	0.00	5,200.0	0.0	716.0	44.2	2.00	-2.00	0.00
5,300.0	0.00	0.00	5,236.3	0.0	716.0	44.2	0.00	0.00	0.00
5,400.0	0.00	0.00	5,336.3	0.0	716.0	44.2	0.00	0.00	0.00
5,500.0	0.00	0.00	5,436.3	0.0	716.0	44.2	0.00	0.00	0.00
5,600.0	0.00	0.00	5,536.3	0.0	716.0	44.2	0.00	0.00	0.00
5,700.0	0.00	0.00	5,636.3	0.0	716.0	44.2	0.00	0.00	0.00
5,800.0	0.00	0.00	5,736.3	0.0	716.0	44.2	0.00	0.00	0.00
5,900.0	0.00	0.00	5,836.3	0.0	716.0	44.2	0.00	0.00	0.00
5,911.0	0.00	0.00	5,847.3	0.0	716.0	44.2	0.00	0.00	0.00
Start Build 10.00									
6,000.0	8.90	359.41	5,936.0	6.9	715.9	51.1	10.00	10.00	0.00
6,093.8	18.28	359.41	6,027.0	28.9	715.7	73.0	10.00	10.00	0.00
SHARON SPRINGS									
6,100.0	18.90	359.41	6,032.9	30.9	715.7	75.0	10.00	10.00	0.00
6,200.0	28.90	359.41	6,124.2	71.4	715.3	115.4	10.00	10.00	0.00
6,203.2	29.22	359.41	6,127.0	72.9	715.2	116.9	10.00	10.00	0.00
NIOBRARA									
6,226.4	31.54	359.41	6,147.0	84.6	715.1	128.6	10.00	10.00	0.00
NBRR A									
6,255.0	34.40	359.41	6,171.0	100.2	715.0	144.1	10.00	10.00	0.00
NBRR A MARL									
6,300.0	38.90	359.41	6,207.1	127.1	714.7	170.9	10.00	10.00	0.00
6,326.0	41.51	359.41	6,227.0	143.9	714.5	187.7	10.00	10.00	0.00
NBRR B									
6,396.9	48.59	359.41	6,277.0	193.9	714.0	237.6	10.00	10.00	0.00
NBRR B MARL									
6,400.0	48.90	359.41	6,279.1	196.3	714.0	240.0	10.00	10.00	0.00
6,441.2	53.02	359.41	6,305.0	228.3	713.6	271.9	10.00	10.00	0.00
NBRR C									
6,500.0	58.90	359.41	6,337.9	277.0	713.1	320.5	10.00	10.00	0.00
6,528.4	61.75	359.41	6,352.0	301.7	712.9	345.1	10.00	10.00	0.00
NBRR C MARL									
6,600.0	68.90	359.41	6,381.9	366.7	712.2	410.0	10.00	10.00	0.00
6,630.3	71.93	359.41	6,392.0	395.2	711.9	438.4	10.00	10.00	0.00
FT HAYS									
6,700.0	78.90	359.41	6,409.5	462.6	711.2	505.7	10.00	10.00	0.00
6,749.8	83.88	359.41	6,417.0	511.9	710.7	554.8	10.00	10.00	0.00
CODELL									
6,800.0	88.90	359.41	6,420.2	561.9	710.2	604.7	10.00	10.00	0.00
6,811.2	90.02	359.41	6,420.3	573.1	710.1	615.8	9.99	9.99	0.00
Start 9349.3 hold at 6811.2 MD - LPL 669'FSL & 2084'FWL, Sec.1									
6,900.0	90.02	359.41	6,420.2	661.9	709.2	704.5	0.00	0.00	0.00
7,000.0	90.02	359.41	6,420.2	761.9	708.1	804.2	0.00	0.00	0.00
7,100.0	90.02	359.41	6,420.2	861.9	707.1	903.9	0.00	0.00	0.00

Database:	US_EDM	Local Co-ordinate Reference:	Well K&H Ranches 1-661-6004XCDH
Company:	Caerus Oil and Gas LLC	TVD Reference:	WELL @ 4780.0ft (Original Well Elev)
Project:	SEC.1-T6N-R61W	MD Reference:	WELL @ 4780.0ft (Original Well Elev)
Site:	K&H Ranches MN 1-661 North Half Pad Sec.1-T6N-R67W	North Reference:	True
Well:	K&H Ranches 1-661-6004XCDH	Survey Calculation Method:	Minimum Curvature
Wellbore:	Wellbore #1		
Design:	Plan #1 (2-23-16)		

Planned Survey									
Measured Depth (ft)	Inclination (°)	Azimuth (°)	Vertical Depth (ft)	+N/-S (ft)	+E/-W (ft)	Vertical Section (ft)	Dogleg Rate (°/100usft)	Build Rate (°/100usft)	Turn Rate (°/100usft)
7,200.0	90.02	359.41	6,420.1	961.9	706.1	1,003.7	0.00	0.00	0.00
7,300.0	90.02	359.41	6,420.1	1,061.9	705.0	1,103.4	0.00	0.00	0.00
7,400.0	90.02	359.41	6,420.1	1,161.9	704.0	1,203.2	0.00	0.00	0.00
7,500.0	90.02	359.41	6,420.0	1,261.9	703.0	1,302.9	0.00	0.00	0.00
7,600.0	90.02	359.41	6,420.0	1,361.9	701.9	1,402.6	0.00	0.00	0.00
7,700.0	90.02	359.41	6,420.0	1,461.9	700.9	1,502.4	0.00	0.00	0.00
7,800.0	90.02	359.41	6,419.9	1,561.9	699.9	1,602.1	0.00	0.00	0.00
7,900.0	90.02	359.41	6,419.9	1,661.9	698.9	1,701.9	0.00	0.00	0.00
8,000.0	90.02	359.41	6,419.8	1,761.9	697.8	1,801.6	0.00	0.00	0.00
8,100.0	90.02	359.41	6,419.8	1,861.9	696.8	1,901.3	0.00	0.00	0.00
8,200.0	90.02	359.41	6,419.8	1,961.9	695.8	2,001.1	0.00	0.00	0.00
8,300.0	90.02	359.41	6,419.7	2,061.9	694.7	2,100.8	0.00	0.00	0.00
8,400.0	90.02	359.41	6,419.7	2,161.9	693.7	2,200.6	0.00	0.00	0.00
8,500.0	90.02	359.41	6,419.7	2,261.9	692.7	2,300.3	0.00	0.00	0.00
8,600.0	90.02	359.41	6,419.6	2,361.8	691.6	2,400.0	0.00	0.00	0.00
8,700.0	90.02	359.41	6,419.6	2,461.8	690.6	2,499.8	0.00	0.00	0.00
8,800.0	90.02	359.41	6,419.6	2,561.8	689.6	2,599.5	0.00	0.00	0.00
8,900.0	90.02	359.41	6,419.5	2,661.8	688.5	2,699.3	0.00	0.00	0.00
9,000.0	90.02	359.41	6,419.5	2,761.8	687.5	2,799.0	0.00	0.00	0.00
9,100.0	90.02	359.41	6,419.5	2,861.8	686.5	2,898.7	0.00	0.00	0.00
9,200.0	90.02	359.41	6,419.4	2,961.8	685.4	2,998.5	0.00	0.00	0.00
9,300.0	90.02	359.41	6,419.4	3,061.8	684.4	3,098.2	0.00	0.00	0.00
9,400.0	90.02	359.41	6,419.4	3,161.8	683.4	3,198.0	0.00	0.00	0.00
9,500.0	90.02	359.41	6,419.3	3,261.8	682.3	3,297.7	0.00	0.00	0.00
9,600.0	90.02	359.41	6,419.3	3,361.8	681.3	3,397.4	0.00	0.00	0.00
9,700.0	90.02	359.41	6,419.3	3,461.8	680.3	3,497.2	0.00	0.00	0.00
9,800.0	90.02	359.41	6,419.2	3,561.8	679.3	3,596.9	0.00	0.00	0.00
9,900.0	90.02	359.41	6,419.2	3,661.8	678.2	3,696.7	0.00	0.00	0.00
10,000.0	90.02	359.41	6,419.2	3,761.8	677.2	3,796.4	0.00	0.00	0.00
10,100.0	90.02	359.41	6,419.1	3,861.8	676.2	3,896.1	0.00	0.00	0.00
10,200.0	90.02	359.41	6,419.1	3,961.8	675.1	3,995.9	0.00	0.00	0.00
10,300.0	90.02	359.41	6,419.0	4,061.8	674.1	4,095.6	0.00	0.00	0.00
10,400.0	90.02	359.41	6,419.0	4,161.8	673.1	4,195.4	0.00	0.00	0.00
10,500.0	90.02	359.41	6,419.0	4,261.7	672.0	4,295.1	0.00	0.00	0.00
10,600.0	90.02	359.41	6,418.9	4,361.7	671.0	4,394.8	0.00	0.00	0.00
10,700.0	90.02	359.41	6,418.9	4,461.7	670.0	4,494.6	0.00	0.00	0.00
10,800.0	90.02	359.41	6,418.9	4,561.7	668.9	4,594.3	0.00	0.00	0.00
10,900.0	90.02	359.41	6,418.8	4,661.7	667.9	4,694.1	0.00	0.00	0.00
11,000.0	90.02	359.41	6,418.8	4,761.7	666.9	4,793.8	0.00	0.00	0.00
11,100.0	90.02	359.41	6,418.8	4,861.7	665.8	4,893.5	0.00	0.00	0.00
11,200.0	90.02	359.41	6,418.7	4,961.7	664.8	4,993.3	0.00	0.00	0.00
11,300.0	90.02	359.41	6,418.7	5,061.7	663.8	5,093.0	0.00	0.00	0.00
11,400.0	90.02	359.41	6,418.7	5,161.7	662.7	5,192.8	0.00	0.00	0.00
11,500.0	90.02	359.41	6,418.6	5,261.7	661.7	5,292.5	0.00	0.00	0.00
11,600.0	90.02	359.41	6,418.6	5,361.7	660.7	5,392.2	0.00	0.00	0.00
11,700.0	90.02	359.41	6,418.6	5,461.7	659.7	5,492.0	0.00	0.00	0.00
11,800.0	90.02	359.41	6,418.5	5,561.7	658.6	5,591.7	0.00	0.00	0.00
11,900.0	90.02	359.41	6,418.5	5,661.7	657.6	5,691.5	0.00	0.00	0.00
12,000.0	90.02	359.41	6,418.5	5,761.7	656.6	5,791.2	0.00	0.00	0.00
12,100.0	90.02	359.41	6,418.4	5,861.7	655.5	5,890.9	0.00	0.00	0.00
12,200.0	90.02	359.41	6,418.4	5,961.7	654.5	5,990.7	0.00	0.00	0.00
12,300.0	90.02	359.41	6,418.3	6,061.7	653.5	6,090.4	0.00	0.00	0.00
12,400.0	90.02	359.41	6,418.3	6,161.6	652.4	6,190.2	0.00	0.00	0.00

Database:	US_EDM	Local Co-ordinate Reference:	Well K&H Ranches 1-661-6004XCDH
Company:	Caerus Oil and Gas LLC	TVD Reference:	WELL @ 4780.0ft (Original Well Elev)
Project:	SEC.1-T6N-R61W	MD Reference:	WELL @ 4780.0ft (Original Well Elev)
Site:	K&H Ranches MN 1-661 North Half Pad Sec.1-T6N-R67W	North Reference:	True
Well:	K&H Ranches 1-661-6004XCDH	Survey Calculation Method:	Minimum Curvature
Wellbore:	Wellbore #1		
Design:	Plan #1 (2-23-16)		

Planned Survey									
Measured Depth (ft)	Inclination (°)	Azimuth (°)	Vertical Depth (ft)	+N/-S (ft)	+E/-W (ft)	Vertical Section (ft)	Dogleg Rate (°/100usft)	Build Rate (°/100usft)	Turn Rate (°/100usft)
12,500.0	90.02	359.41	6,418.3	6,261.6	651.4	6,289.9	0.00	0.00	0.00
12,600.0	90.02	359.41	6,418.2	6,361.6	650.4	6,389.6	0.00	0.00	0.00
12,700.0	90.02	359.41	6,418.2	6,461.6	649.3	6,489.4	0.00	0.00	0.00
12,800.0	90.02	359.41	6,418.2	6,561.6	648.3	6,589.1	0.00	0.00	0.00
12,900.0	90.02	359.41	6,418.1	6,661.6	647.3	6,688.9	0.00	0.00	0.00
13,000.0	90.02	359.41	6,418.1	6,761.6	646.2	6,788.6	0.00	0.00	0.00
13,100.0	90.02	359.41	6,418.1	6,861.6	645.2	6,888.4	0.00	0.00	0.00
13,200.0	90.02	359.41	6,418.0	6,961.6	644.2	6,988.1	0.00	0.00	0.00
13,300.0	90.02	359.41	6,418.0	7,061.6	643.1	7,087.8	0.00	0.00	0.00
13,400.0	90.02	359.41	6,418.0	7,161.6	642.1	7,187.6	0.00	0.00	0.00
13,500.0	90.02	359.41	6,417.9	7,261.6	641.1	7,287.3	0.00	0.00	0.00
13,600.0	90.02	359.41	6,417.9	7,361.6	640.1	7,387.1	0.00	0.00	0.00
13,700.0	90.02	359.41	6,417.9	7,461.6	639.0	7,486.8	0.00	0.00	0.00
13,800.0	90.02	359.41	6,417.8	7,561.6	638.0	7,586.5	0.00	0.00	0.00
13,900.0	90.02	359.41	6,417.8	7,661.6	637.0	7,686.3	0.00	0.00	0.00
14,000.0	90.02	359.41	6,417.8	7,761.6	635.9	7,786.0	0.00	0.00	0.00
14,100.0	90.02	359.41	6,417.7	7,861.6	634.9	7,885.8	0.00	0.00	0.00
14,200.0	90.02	359.41	6,417.7	7,961.5	633.9	7,985.5	0.00	0.00	0.00
14,300.0	90.02	359.41	6,417.6	8,061.5	632.8	8,085.2	0.00	0.00	0.00
14,400.0	90.02	359.41	6,417.6	8,161.5	631.8	8,185.0	0.00	0.00	0.00
14,500.0	90.02	359.41	6,417.6	8,261.5	630.8	8,284.7	0.00	0.00	0.00
14,600.0	90.02	359.41	6,417.5	8,361.5	629.7	8,384.5	0.00	0.00	0.00
14,700.0	90.02	359.41	6,417.5	8,461.5	628.7	8,484.2	0.00	0.00	0.00
14,800.0	90.02	359.41	6,417.5	8,561.5	627.7	8,583.9	0.00	0.00	0.00
14,900.0	90.02	359.41	6,417.4	8,661.5	626.6	8,683.7	0.00	0.00	0.00
15,000.0	90.02	359.41	6,417.4	8,761.5	625.6	8,783.4	0.00	0.00	0.00
15,100.0	90.02	359.41	6,417.4	8,861.5	624.6	8,883.2	0.00	0.00	0.00
15,200.0	90.02	359.41	6,417.3	8,961.5	623.5	8,982.9	0.00	0.00	0.00
15,300.0	90.02	359.41	6,417.3	9,061.5	622.5	9,082.6	0.00	0.00	0.00
15,400.0	90.02	359.41	6,417.3	9,161.5	621.5	9,182.4	0.00	0.00	0.00
15,500.0	90.02	359.41	6,417.2	9,261.5	620.5	9,282.1	0.00	0.00	0.00
15,600.0	90.02	359.41	6,417.2	9,361.5	619.4	9,381.9	0.00	0.00	0.00
15,700.0	90.02	359.41	6,417.2	9,461.5	618.4	9,481.6	0.00	0.00	0.00
15,800.0	90.02	359.41	6,417.1	9,561.5	617.4	9,581.3	0.00	0.00	0.00
15,900.0	90.02	359.41	6,417.1	9,661.5	616.3	9,681.1	0.00	0.00	0.00
16,000.0	90.02	359.41	6,417.1	9,761.5	615.3	9,780.8	0.00	0.00	0.00
16,100.0	90.02	359.41	6,417.0	9,861.4	614.3	9,880.6	0.00	0.00	0.00
16,160.5	90.02	359.41	6,417.0	9,921.9	613.6	9,940.9	0.00	0.00	0.00
TD at 16160.5 - BHL 460°FNL & 2086°FNL, Sec.36									

Database:	US_EDM	Local Co-ordinate Reference:	Well K&H Ranches 1-661-6004XCDH
Company:	Caerus Oil and Gas LLC	TVD Reference:	WELL @ 4780.0ft (Original Well Elev)
Project:	SEC.1-T6N-R61W	MD Reference:	WELL @ 4780.0ft (Original Well Elev)
Site:	K&H Ranches MN 1-661 North Half Pad Sec.1-T6N-R67W	North Reference:	True
Well:	K&H Ranches 1-661-6004XCDH	Survey Calculation Method:	Minimum Curvature
Wellbore:	Wellbore #1		
Design:	Plan #1 (2-23-16)		

Design Targets									
Target Name - hit/miss target - Shape	Dip Angle (°)	Dip Dir. (°)	TVD (ft)	+N/-S (ft)	+E/-W (ft)	Northing (usft)	Easting (usft)	Latitude	Longitude
SHL 100'FSL & 1369'FW - plan hits target center - Point	0.00	0.00	1.0	0.0	0.0	1,431,547.36	3,372,103.54	40.510291	-104.161723
BHL 460'FNL & 2086'FW - plan hits target center - Point	0.00	0.00	6,417.0	9,922.0	613.6	1,441,477.10	3,372,567.36	40.537525	-104.159515
LPL 669'FSL & 2084'FW - plan hits target center - Point	0.00	0.00	6,420.3	573.1	710.1	1,432,131.08	3,372,804.89	40.511864	-104.159169

Formations						
Measured Depth (ft)	Vertical Depth (ft)	Name	Lithology	Dip (°)	Dip Direction (°)	
3,198.7	3,165.0	RICHARDS SD		0.00		
6,093.8	6,027.0	SHARON SPRINGS		0.00		
6,203.2	6,127.0	NIOBRARA		0.00		
6,226.4	6,147.0	NBRR A		0.00		
6,255.0	6,171.0	NBRR A MARL		0.00		
6,326.0	6,227.0	NBRR B		0.00		
6,396.9	6,277.0	NBRR B MARL		0.00		
6,441.2	6,305.0	NBRR C		0.00		
6,528.4	6,352.0	NBRR C MARL		0.00		
6,630.3	6,392.0	FT HAYS		0.00		
6,749.8	6,417.0	CODELL		0.00		

Plan Annotations					
Measured Depth (ft)	Vertical Depth (ft)	Local Coordinates			
		+N/-S (ft)	+E/-W (ft)	Comment	
800.0	800.0	0.0	0.0	Start Build 1.50	
4,726.1	4,665.6	0.0	67.0	Start Drop -2.00	
5,911.0	5,847.3	0.0	665.7	Start Build 10.00	
6,811.2	6,420.3	0.0	716.0	Start 9349.3 hold at 6811.2 MD	
16,160.5	6,417.0	0.0	716.0	TD at 16160.5	