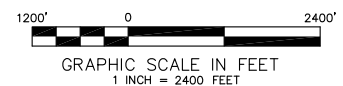


K&H RANCHES 1-661-6004XCDH LOCATION PLAT



LEGEND:

- FIELD LOCATED SECTION MONUMENTS AS DESCRIBED
- SURFACE HOLE LOCATION (SHL)
- LANDING POINT (LPL)
- BOTTOM HOLE LOCATION (BHL)

NOTES:

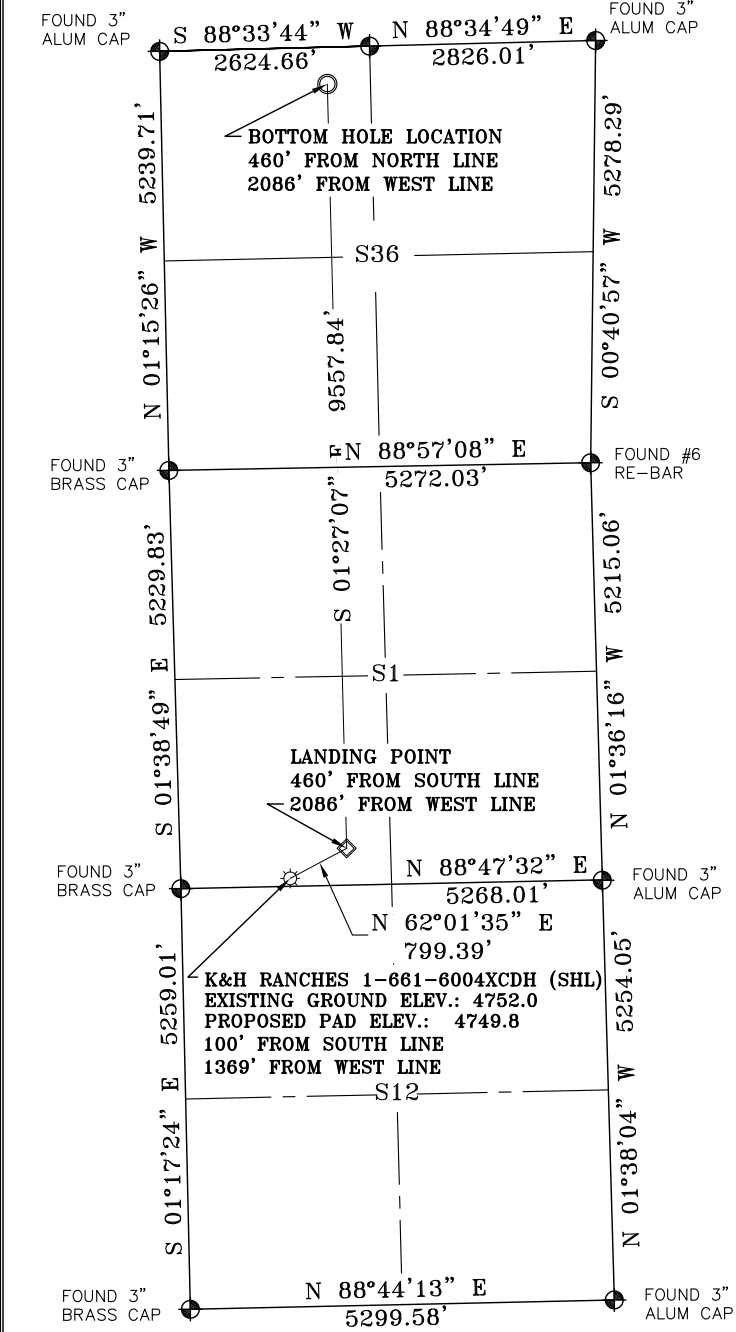
- 1) ELEVATIONS ARE BASED ON NGS STATION "PARACHINI" WITH A PUBLISHED ELEVATION OF 1434.1 METERS.
- 2) LATITUDES AND LONGITUDES ARE BASED ON NAD 83 COLORADO NORTH ZONE.
- 3) WELL MEASURED 90° FROM SECTION LINES.
- 4) THE BASIS OF BEARING IS FROM GPS OBSERVATION RESULTING IN THE BEARING BETWEEN THE FOUND MONUMENTS AS SHOWN.
- 5) ELEVATION MASK SET TO 15°
- 6) PDOP SET TO 6

SURVEYORS STATEMENT:

I, JAMES A. KALMON, A REGISTERED LAND SURVEYOR IN THE STATE OF COLORADO DO HEREBY CERTIFY THAT THE SURVEY SHOWN HEREON WAS PREPARED BY ME OR UNDER MY DIRECT SUPERVISION AND THAT THIS PLAT IS A TRUE REPRESENTATION THEREOF. I FURTHER CERTIFY THAT THIS LOCATION HAS BEEN STAKED ON THE GROUND AS SHOWN ON THIS PLAT.



JAMES A. KALMON, COLORADO REGISTRATION NO. 38050
FOR AND ON BEHALF OF ECLIPSE SURVEYING, INC.



CLOSEST WELL IN SAME FORMATION			
WELL NAME	DIRECTION	DISTANCE	
K&H RANCHES 1-661-5802XCDH	S 88°33' W	1110'	PROPOSED
	N/A	>1 MILE	EXISTING

	WELL NAME	NORTHING	EASTING	LAT NAD 83	LONG NAD 83
SHL	K&H RANCHES 1-661-6004XCDH	1431547.4	3372103.5	N 40.510291	W 104.161723
LPL	LANDING POINT LOCATION	1431922.3	3372809.5	N 40.511290	W 104.159164
BHL	BOTTOM HOLE LOCATION	1441477.1	3372567.4	N 40.537525	W 104.159515



ECLIPSE
Surveying, Inc.
1874 Six Lazy K Rd., New Castle, CO 81647
(970) 876-5939

REV. DATE: 01/14/16
SCALE: 1" = 2400'
DATE: 01/12/16
SHEET: 1 OF 1
PROJECT: S1-661
DFT: JAK



600 17th Street, Suite 1600 North, Denver, CO 80202
S1/2SW1/4 SEC 1, T6N, R61W, 6TH PM
WELD COUNTY, COLORADO