

Caerus Oil and Gas LLC

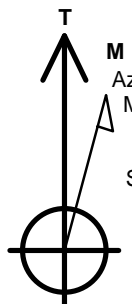
Well Name: **K&H Ranches 1-661-5701BH**

Surface Location: K&H Ranches MN 1-661 North Half Pad Sec.1-T6N-R67W
North American Datum 1983 , US State Plane 1983, Colorado Northern Zone
Ground Elevation: 4750.0

+N/-S +E/-W Northing Easting Latitude Longitude Slot
0.0 0.0 1431544.50 3371968.57 40.510288 -104.162208
Original Well Elev WELL @ 4780.0ft (Original Well Elev)

DESIGN TARGET DETAILS

Name	TVD	+N/-S	+E/-W	Shape
SHL 100'FSL & 1234'FWL, Sec.1	1.0	0.0	0.0	Point
BHL 260'FNL & 659'FWL, Sec.1	6200.0	4864.3	-626.7	Point
LPL 683'FSL & 657'FWL, Sec.1	6250.1	579.6	-582.9	Point



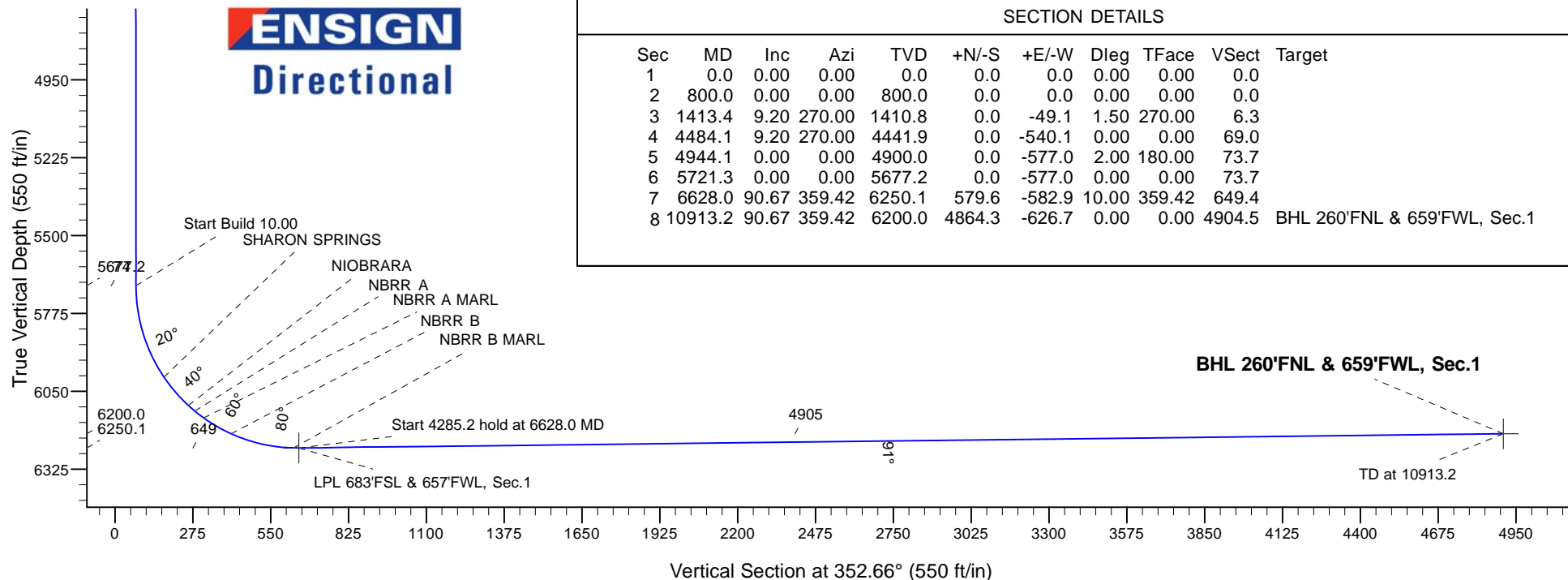
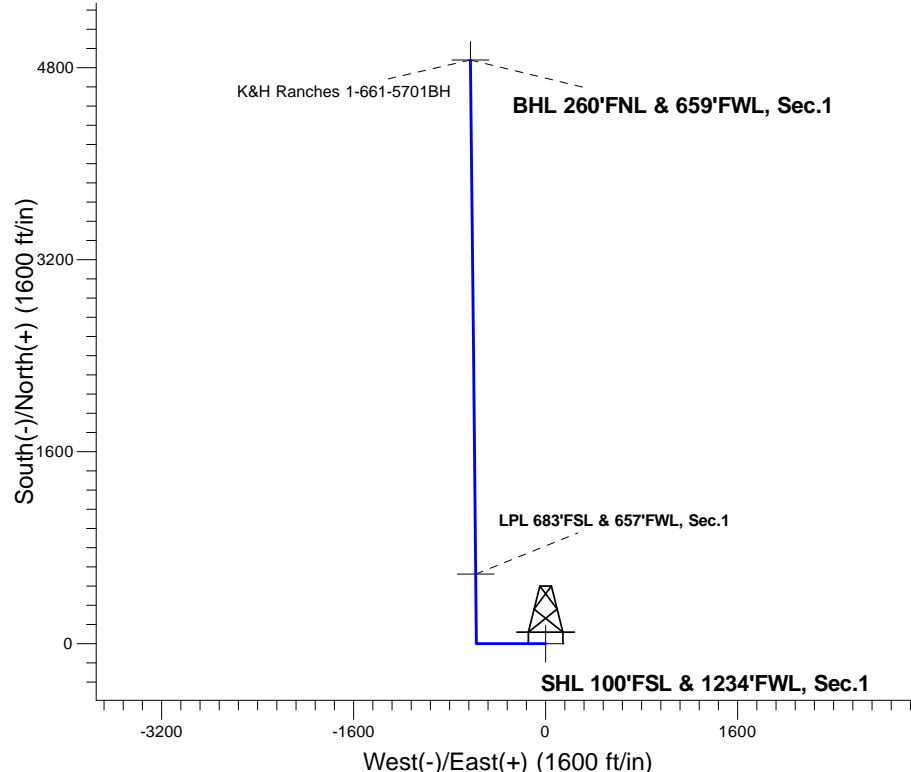
Azimuths to True North
Magnetic North: 7.91°

Magnetic Field
Strength: 52755.5snT
Dip Angle: 67.07°
Date: 2/23/2016
Model: IGRF2010

ANNOTATIONS

TVD	MD	Annotation
800.0	800.0	Start Build 1.50
4441.9	4484.1	Start Drop -2.00
5677.2	5721.3	Start Build 10.00
6250.1	6628.0	Start 4285.2 hold at 6628.0 MD
6200.0	10913.2	TD at 10913.2

K&H Ranches MN 1-661 North Half Pad Sec.1-T6N-R67W
K&H Ranches 1-661-5701BH
Plan #1 (2-23-16)
11:42, February 25 2016





Directional

Caerus Oil and Gas LLC

SEC.1-T6N-R61W

K&H Ranches MN 1-661 North Half Pad Sec.1-T6N-R67W

K&H Ranches 1-661-5701BH

Wellbore #1

Plan: Plan #1 (2-23-16)

Standard Planning Report

25 February, 2016

Database:	US_EDM	Local Co-ordinate Reference:	Well K&H Ranches 1-661-5701BH
Company:	Caerus Oil and Gas LLC	TVD Reference:	WELL @ 4780.0ft (Original Well Elev)
Project:	SEC.1-T6N-R61W	MD Reference:	WELL @ 4780.0ft (Original Well Elev)
Site:	K&H Ranches MN 1-661 North Half Pad Sec.1-T6N-R67W	North Reference:	True
Well:	K&H Ranches 1-661-5701BH	Survey Calculation Method:	Minimum Curvature
Wellbore:	Wellbore #1		
Design:	Plan #1 (2-23-16)		

Project	SEC.1-T6N-R61W, Weld County, CO		
Map System:	US State Plane 1983	System Datum:	Mean Sea Level
Geo Datum:	North American Datum 1983		Using Well Reference Point
Map Zone:	Colorado Northern Zone		Using geodetic scale factor

Site		K&H Ranches MN 1-661 North Half Pad Sec.1-T6N-R67W			
Site Position:		Northing:	1,431,544.20 usft	Latitude:	40.510288
From:	Lat/Long	Easting:	3,371,953.57 usft	Longitude:	-104.162263
Position Uncertainty:	0.0 ft	Slot Radius:	13-3/16 "	Grid Convergence:	0.86 °

Well	K&H Ranches 1-661-5701BH					
Well Position	+N/-S	0.1 ft	Northing:	1,431,544.50 usft	Latitude:	40.510288
	+E/-W	15.0 ft	Easting:	3,371,968.57 usft	Longitude:	-104.162209
Position Uncertainty		0.0 ft	Wellhead Elevation:	0.0 ft	Ground Level:	4,750.0 ft

Wellbore	Wellbore #1				
Magnetics	Model Name	Sample Date	Declination (°)	Dip Angle (°)	Field Strength (nT)
	IGRF2010	2/23/2016	7.91	67.07	52,755

Design	Plan #1 (2-23-16)			
Audit Notes:				
Version:	Phase:	PROTOTYPE	Tie On Depth:	0.0
Vertical Section:	Depth From (TVD) (ft)	+N/-S (ft)	+E/-W (ft)	Direction (°)
	0.0	0.0	0.0	352.66

Plan Sections										
Measured Depth (ft)	Inclination (°)	Azimuth (°)	Vertical Depth (ft)	+N/-S (ft)	+E/-W (ft)	Dogleg Rate (°/100usft)	Build Rate (°/100usft)	Turn Rate (°/100usft)	TFO (°)	Target
0.0	0.00	0.00	0.0	0.0	0.0	0.00	0.00	0.00	0.00	
800.0	0.00	0.00	800.0	0.0	0.0	0.00	0.00	0.00	0.00	
1,413.4	9.20	270.00	1,410.8	0.0	-49.1	1.50	1.50	0.00	270.00	
4,484.1	9.20	270.00	4,441.9	0.0	-540.1	0.00	0.00	0.00	0.00	
4,944.1	0.00	0.00	4,900.0	0.0	-577.0	2.00	-2.00	0.00	180.00	
5,721.3	0.00	0.00	5,677.2	0.0	-577.0	0.00	0.00	0.00	0.00	
6,628.0	90.67	359.42	6,250.1	579.6	-582.9	10.00	10.00	0.00	359.42	
10,913.2	90.67	359.42	6,200.0	4,864.3	-626.7	0.00	0.00	0.00	0.00	BHL 260'FNL & 659'F

Database:	US_EDM	Local Co-ordinate Reference:	Well K&H Ranches 1-661-5701BH
Company:	Caerus Oil and Gas LLC	TVD Reference:	WELL @ 4780.0ft (Original Well Elev)
Project:	SEC.1-T6N-R61W	MD Reference:	WELL @ 4780.0ft (Original Well Elev)
Site:	K&H Ranches MN 1-661 North Half Pad Sec.1-T6N-R67W	North Reference:	True
Well:	K&H Ranches 1-661-5701BH	Survey Calculation Method:	Minimum Curvature
Wellbore:	Wellbore #1		
Design:	Plan #1 (2-23-16)		

Planned Survey

Measured Depth (ft)	Inclination (°)	Azimuth (°)	Vertical Depth (ft)	+N/-S (ft)	+E/-W (ft)	Vertical Section (ft)	Dogleg Rate (°/100usft)	Build Rate (°/100usft)	Turn Rate (°/100usft)
0.0	0.00	0.00	0.0	0.0	0.0	0.0	0.00	0.00	0.00
1.0	0.00	0.00	1.0	0.0	0.0	0.0	0.00	0.00	0.00
SHL 100'FSL & 1234'FWL, Sec.1									
100.0	0.00	0.00	100.0	0.0	0.0	0.0	0.00	0.00	0.00
200.0	0.00	0.00	200.0	0.0	0.0	0.0	0.00	0.00	0.00
300.0	0.00	0.00	300.0	0.0	0.0	0.0	0.00	0.00	0.00
400.0	0.00	0.00	400.0	0.0	0.0	0.0	0.00	0.00	0.00
500.0	0.00	0.00	500.0	0.0	0.0	0.0	0.00	0.00	0.00
600.0	0.00	0.00	600.0	0.0	0.0	0.0	0.00	0.00	0.00
700.0	0.00	0.00	700.0	0.0	0.0	0.0	0.00	0.00	0.00
800.0	0.00	0.00	800.0	0.0	0.0	0.0	0.00	0.00	0.00
Start Build 1.50									
900.0	1.50	270.00	900.0	0.0	-1.3	0.2	1.50	1.50	0.00
1,000.0	3.00	270.00	999.9	0.0	-5.2	0.7	1.50	1.50	0.00
1,100.0	4.50	270.00	1,099.7	0.0	-11.8	1.5	1.50	1.50	0.00
1,200.0	6.00	270.00	1,199.3	0.0	-20.9	2.7	1.50	1.50	0.00
1,300.0	7.50	270.00	1,298.6	0.0	-32.7	4.2	1.50	1.50	0.00
1,400.0	9.00	270.00	1,397.5	0.0	-47.0	6.0	1.50	1.50	0.00
1,413.4	9.20	270.00	1,410.8	0.0	-49.1	6.3	1.50	1.50	0.00
1,500.0	9.20	270.00	1,496.3	0.0	-63.0	8.0	0.00	0.00	0.00
1,600.0	9.20	270.00	1,595.0	0.0	-79.0	10.1	0.00	0.00	0.00
1,700.0	9.20	270.00	1,693.7	0.0	-95.0	12.1	0.00	0.00	0.00
1,800.0	9.20	270.00	1,792.4	0.0	-111.0	14.2	0.00	0.00	0.00
1,900.0	9.20	270.00	1,891.1	0.0	-127.0	16.2	0.00	0.00	0.00
2,000.0	9.20	270.00	1,989.8	0.0	-142.9	18.3	0.00	0.00	0.00
2,100.0	9.20	270.00	2,088.5	0.0	-158.9	20.3	0.00	0.00	0.00
2,200.0	9.20	270.00	2,187.2	0.0	-174.9	22.4	0.00	0.00	0.00
2,300.0	9.20	270.00	2,286.0	0.0	-190.9	24.4	0.00	0.00	0.00
2,400.0	9.20	270.00	2,384.7	0.0	-206.9	26.4	0.00	0.00	0.00
2,500.0	9.20	270.00	2,483.4	0.0	-222.9	28.5	0.00	0.00	0.00
2,600.0	9.20	270.00	2,582.1	0.0	-238.9	30.5	0.00	0.00	0.00
2,700.0	9.20	270.00	2,680.8	0.0	-254.9	32.6	0.00	0.00	0.00
2,800.0	9.20	270.00	2,779.5	0.0	-270.9	34.6	0.00	0.00	0.00
2,900.0	9.20	270.00	2,878.2	0.0	-286.9	36.7	0.00	0.00	0.00
3,000.0	9.20	270.00	2,977.0	0.0	-302.8	38.7	0.00	0.00	0.00
3,100.0	9.20	270.00	3,075.7	0.0	-318.8	40.7	0.00	0.00	0.00
3,185.4	9.20	270.00	3,160.0	0.0	-332.5	42.5	0.00	0.00	0.00
RICHARDS SD									
3,200.0	9.20	270.00	3,174.4	0.0	-334.8	42.8	0.00	0.00	0.00
3,300.0	9.20	270.00	3,273.1	0.0	-350.8	44.8	0.00	0.00	0.00
3,400.0	9.20	270.00	3,371.8	0.0	-366.8	46.9	0.00	0.00	0.00
3,500.0	9.20	270.00	3,470.5	0.0	-382.8	48.9	0.00	0.00	0.00
3,600.0	9.20	270.00	3,569.2	0.0	-398.8	51.0	0.00	0.00	0.00
3,700.0	9.20	270.00	3,667.9	0.0	-414.8	53.0	0.00	0.00	0.00
3,800.0	9.20	270.00	3,766.7	0.0	-430.8	55.0	0.00	0.00	0.00
3,900.0	9.20	270.00	3,865.4	0.0	-446.7	57.1	0.00	0.00	0.00
4,000.0	9.20	270.00	3,964.1	0.0	-462.7	59.1	0.00	0.00	0.00
4,100.0	9.20	270.00	4,062.8	0.0	-478.7	61.2	0.00	0.00	0.00
4,200.0	9.20	270.00	4,161.5	0.0	-494.7	63.2	0.00	0.00	0.00
4,300.0	9.20	270.00	4,260.2	0.0	-510.7	65.3	0.00	0.00	0.00
4,400.0	9.20	270.00	4,358.9	0.0	-526.7	67.3	0.00	0.00	0.00
4,484.1	9.20	270.00	4,442.0	0.0	-540.1	69.0	0.00	0.00	0.00
Start Drop -2.00									

Database:	US_EDM	Local Co-ordinate Reference:	Well K&H Ranches 1-661-5701BH
Company:	Caerus Oil and Gas LLC	TVD Reference:	WELL @ 4780.0ft (Original Well Elev)
Project:	SEC.1-T6N-R61W	MD Reference:	WELL @ 4780.0ft (Original Well Elev)
Site:	K&H Ranches MN 1-661 North Half Pad Sec.1-T6N-R67W	North Reference:	True
Well:	K&H Ranches 1-661-5701BH	Survey Calculation Method:	Minimum Curvature
Wellbore:	Wellbore #1		
Design:	Plan #1 (2-23-16)		

Planned Survey									
Measured Depth (ft)	Inclination (°)	Azimuth (°)	Vertical Depth (ft)	+N/-S (ft)	+E/-W (ft)	Vertical Section (ft)	Dogleg Rate (°/100usft)	Build Rate (°/100usft)	Turn Rate (°/100usft)
4,500.0	8.88	270.00	4,457.7	0.0	-542.6	69.3	2.00	-2.00	0.00
4,600.0	6.88	270.00	4,556.7	0.0	-556.4	71.1	2.00	-2.00	0.00
4,700.0	4.88	270.00	4,656.2	0.0	-566.6	72.4	2.00	-2.00	0.00
4,800.0	2.88	270.00	4,755.9	0.0	-573.4	73.3	2.00	-2.00	0.00
4,900.0	0.88	270.00	4,855.9	0.0	-576.7	73.7	2.00	-2.00	0.00
4,944.1	0.00	0.00	4,900.0	0.0	-577.0	73.7	2.00	-2.00	0.00
5,000.0	0.00	0.00	4,955.9	0.0	-577.0	73.7	0.00	0.00	0.00
5,100.0	0.00	0.00	5,055.9	0.0	-577.0	73.7	0.00	0.00	0.00
5,200.0	0.00	0.00	5,155.9	0.0	-577.0	73.7	0.00	0.00	0.00
5,300.0	0.00	0.00	5,255.9	0.0	-577.0	73.7	0.00	0.00	0.00
5,400.0	0.00	0.00	5,355.9	0.0	-577.0	73.7	0.00	0.00	0.00
5,500.0	0.00	0.00	5,455.9	0.0	-577.0	73.7	0.00	0.00	0.00
5,600.0	0.00	0.00	5,555.9	0.0	-577.0	73.7	0.00	0.00	0.00
5,700.0	0.00	0.00	5,655.9	0.0	-577.0	73.7	0.00	0.00	0.00
5,721.3	0.00	0.00	5,677.2	0.0	-577.0	73.7	0.00	0.00	0.00
Start Build 10.00									
5,800.0	7.87	359.42	5,755.6	5.4	-577.1	79.1	10.00	10.00	0.00
5,900.0	17.87	359.42	5,853.0	27.6	-577.3	101.2	10.00	10.00	0.00
6,000.0	27.87	359.42	5,945.0	66.5	-577.7	139.7	10.00	10.00	0.00
6,064.2	34.29	359.42	6,000.0	99.6	-578.0	172.6	10.00	10.00	0.00
SHARON SPRINGS									
6,100.0	37.87	359.42	6,028.9	120.7	-578.2	193.5	10.00	10.00	0.00
6,196.9	47.56	359.42	6,100.0	186.3	-578.9	258.7	10.00	10.00	0.00
NIOBRARA									
6,200.0	47.87	359.42	6,102.1	188.6	-578.9	261.0	10.00	10.00	0.00
6,227.4	50.61	359.42	6,120.0	209.4	-579.1	281.6	10.00	10.00	0.00
NBRR A									
6,266.9	54.56	359.42	6,144.0	240.7	-579.5	312.8	10.00	10.00	0.00
NBRR A MARL									
6,300.0	57.87	359.42	6,162.4	268.2	-579.7	340.1	10.00	10.00	0.00
6,379.8	65.85	359.42	6,200.0	338.5	-580.5	409.9	10.00	10.00	0.00
NBRR B									
6,400.0	67.87	359.42	6,207.9	357.1	-580.6	428.4	10.00	10.00	0.00
6,500.0	77.87	359.42	6,237.4	452.5	-581.6	523.1	10.00	10.00	0.00
6,600.0	87.87	359.42	6,249.8	551.6	-582.6	621.6	10.00	10.00	0.00
6,608.3	88.70	359.42	6,250.0	559.9	-582.7	629.8	10.00	10.00	0.00
NBRR B MARL									
6,628.0	90.67	359.42	6,250.1	579.6	-582.9	649.3	10.00	10.00	0.00
Start 4285.2 hold at 6628.0 MD - LPL 683°FSL & 657°FWL, Sec.1									
6,700.0	90.67	359.42	6,249.3	651.6	-583.7	720.8	0.00	0.00	0.00
6,800.0	90.67	359.42	6,248.1	751.6	-584.7	820.1	0.00	0.00	0.00
6,900.0	90.67	359.42	6,246.9	851.6	-585.7	919.4	0.00	0.00	0.00
7,000.0	90.67	359.42	6,245.8	951.6	-586.7	1,018.7	0.00	0.00	0.00
7,100.0	90.67	359.42	6,244.6	1,051.6	-587.7	1,118.0	0.00	0.00	0.00
7,200.0	90.67	359.42	6,243.4	1,151.6	-588.8	1,217.3	0.00	0.00	0.00
7,300.0	90.67	359.42	6,242.3	1,251.5	-589.8	1,316.6	0.00	0.00	0.00
7,400.0	90.67	359.42	6,241.1	1,351.5	-590.8	1,415.9	0.00	0.00	0.00
7,500.0	90.67	359.42	6,239.9	1,451.5	-591.8	1,515.2	0.00	0.00	0.00
7,600.0	90.67	359.42	6,238.7	1,551.5	-592.8	1,614.5	0.00	0.00	0.00
7,700.0	90.67	359.42	6,237.6	1,651.5	-593.9	1,713.8	0.00	0.00	0.00
7,800.0	90.67	359.42	6,236.4	1,751.5	-594.9	1,813.1	0.00	0.00	0.00
7,900.0	90.67	359.42	6,235.2	1,851.5	-595.9	1,912.4	0.00	0.00	0.00

Database:	US_EDM	Local Co-ordinate Reference:	Well K&H Ranches 1-661-5701BH
Company:	Caerus Oil and Gas LLC	TVD Reference:	WELL @ 4780.0ft (Original Well Elev)
Project:	SEC.1-T6N-R61W	MD Reference:	WELL @ 4780.0ft (Original Well Elev)
Site:	K&H Ranches MN 1-661 North Half Pad Sec.1-T6N-R67W	North Reference:	True
Well:	K&H Ranches 1-661-5701BH	Survey Calculation Method:	Minimum Curvature
Wellbore:	Wellbore #1		
Design:	Plan #1 (2-23-16)		

Planned Survey										
Measured Depth (ft)	Inclination (°)	Azimuth (°)	Vertical Depth (ft)	+N/-S (ft)	+E/-W (ft)	Vertical Section (ft)	Dogleg Rate (°/100usft)	Build Rate (°/100usft)	Turn Rate (°/100usft)	
8,000.0	90.67	359.42	6,234.1	1,951.5	-596.9	2,011.7	0.00	0.00	0.00	
8,100.0	90.67	359.42	6,232.9	2,051.4	-597.9	2,111.0	0.00	0.00	0.00	
8,200.0	90.67	359.42	6,231.7	2,151.4	-599.0	2,210.3	0.00	0.00	0.00	
8,300.0	90.67	359.42	6,230.6	2,251.4	-600.0	2,309.6	0.00	0.00	0.00	
8,400.0	90.67	359.42	6,229.4	2,351.4	-601.0	2,408.9	0.00	0.00	0.00	
8,500.0	90.67	359.42	6,228.2	2,451.4	-602.0	2,508.2	0.00	0.00	0.00	
8,600.0	90.67	359.42	6,227.0	2,551.4	-603.0	2,607.5	0.00	0.00	0.00	
8,700.0	90.67	359.42	6,225.9	2,651.4	-604.1	2,706.8	0.00	0.00	0.00	
8,800.0	90.67	359.42	6,224.7	2,751.4	-605.1	2,806.1	0.00	0.00	0.00	
8,900.0	90.67	359.42	6,223.5	2,851.3	-606.1	2,905.4	0.00	0.00	0.00	
9,000.0	90.67	359.42	6,222.4	2,951.3	-607.1	3,004.7	0.00	0.00	0.00	
9,100.0	90.67	359.42	6,221.2	3,051.3	-608.2	3,104.0	0.00	0.00	0.00	
9,200.0	90.67	359.42	6,220.0	3,151.3	-609.2	3,203.3	0.00	0.00	0.00	
9,300.0	90.67	359.42	6,218.9	3,251.3	-610.2	3,302.6	0.00	0.00	0.00	
9,400.0	90.67	359.42	6,217.7	3,351.3	-611.2	3,401.9	0.00	0.00	0.00	
9,500.0	90.67	359.42	6,216.5	3,451.3	-612.2	3,501.2	0.00	0.00	0.00	
9,600.0	90.67	359.42	6,215.4	3,551.3	-613.3	3,600.5	0.00	0.00	0.00	
9,700.0	90.67	359.42	6,214.2	3,651.3	-614.3	3,699.8	0.00	0.00	0.00	
9,800.0	90.67	359.42	6,213.0	3,751.2	-615.3	3,799.1	0.00	0.00	0.00	
9,900.0	90.67	359.42	6,211.8	3,851.2	-616.3	3,898.4	0.00	0.00	0.00	
10,000.0	90.67	359.42	6,210.7	3,951.2	-617.3	3,997.7	0.00	0.00	0.00	
10,100.0	90.67	359.42	6,209.5	4,051.2	-618.4	4,097.0	0.00	0.00	0.00	
10,200.0	90.67	359.42	6,208.3	4,151.2	-619.4	4,196.3	0.00	0.00	0.00	
10,300.0	90.67	359.42	6,207.2	4,251.2	-620.4	4,295.6	0.00	0.00	0.00	
10,400.0	90.67	359.42	6,206.0	4,351.2	-621.4	4,394.9	0.00	0.00	0.00	
10,500.0	90.67	359.42	6,204.8	4,451.2	-622.4	4,494.2	0.00	0.00	0.00	
10,600.0	90.67	359.42	6,203.7	4,551.1	-623.5	4,593.5	0.00	0.00	0.00	
10,700.0	90.67	359.42	6,202.5	4,651.1	-624.5	4,692.8	0.00	0.00	0.00	
10,800.0	90.67	359.42	6,201.3	4,751.1	-625.5	4,792.1	0.00	0.00	0.00	
10,900.0	90.67	359.42	6,200.2	4,851.1	-626.5	4,891.4	0.00	0.00	0.00	
10,913.2	90.67	359.42	6,200.0	4,864.3	-626.7	4,904.5	0.00	0.00	0.00	
TD at 10913.2 - BHL 260°FNL & 659°FNL, Sec.1										

Design Targets										
Target Name	Dip Angle (°)	Dip Dir. (°)	TVD (ft)	+N/-S (ft)	+E/-W (ft)	Northing (usft)	Easting (usft)	Latitude	Longitude	
SHL 100°FSL & 1234°FNL - plan hits target center - Point	0.00	0.00	1.0	0.0	0.0	1,431,544.52	3,371,968.57	40.510288	-104.162209	
BHL 260°FNL & 659°FNL - plan hits target center - Point	0.00	0.00	6,200.0	4,864.3	-626.7	1,436,398.62	3,371,268.62	40.523640	-104.164463	
LPL 683°FSL & 657°FNL - plan hits target center - Point	0.00	0.00	6,250.1	579.6	-582.9	1,432,115.22	3,371,377.01	40.511879	-104.164305	

Database:	US_EDM	Local Co-ordinate Reference:	Well K&H Ranches 1-661-5701BH
Company:	Caerus Oil and Gas LLC	TVD Reference:	WELL @ 4780.0ft (Original Well Elev)
Project:	SEC.1-T6N-R61W	MD Reference:	WELL @ 4780.0ft (Original Well Elev)
Site:	K&H Ranches MN 1-661 North Half Pad Sec.1-T6N-R67W	North Reference:	True
Well:	K&H Ranches 1-661-5701BH	Survey Calculation Method:	Minimum Curvature
Wellbore:	Wellbore #1		
Design:	Plan #1 (2-23-16)		

Formations					
Measured Depth (ft)	Vertical Depth (ft)	Name	Lithology	Dip (°)	Dip Direction (°)
3,185.4	3,160.0	RICHARDS SD		0.00	
6,064.2	6,000.0	SHARON SPRINGS		0.00	
6,196.9	6,100.0	NIOBRARA		0.00	
6,227.4	6,120.0	NBRR A		0.00	
6,266.9	6,144.0	NBRR A MARL		0.00	
6,379.8	6,200.0	NBRR B		0.00	
6,608.3	6,250.0	NBRR B MARL		0.00	

Plan Annotations				
Measured Depth (ft)	Vertical Depth (ft)	Local Coordinates		Comment
		+N/-S (ft)	+E/-W (ft)	
800.0	800.0	0.0	0.0	Start Build 1.50
4,484.1	4,441.9	0.0	-49.1	Start Drop -2.00
5,721.3	5,677.2	0.0	-540.1	Start Build 10.00
6,628.0	6,250.1	0.0	-577.0	Start 4285.2 hold at 6628.0 MD
10,913.2	6,200.0	0.0	-577.0	TD at 10913.2