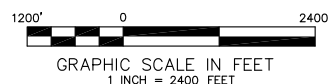


# K&H RANCHES 1-661-5701BH LOCATION PLAT



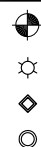
## LEGEND:

FIELD LOCATED SECTION MONUMENTS AS DESCRIBED

SURFACE HOLE LOCATION (SHL)

LANDING POINT (LPL)

BOTTOM HOLE LOCATION (BHL)

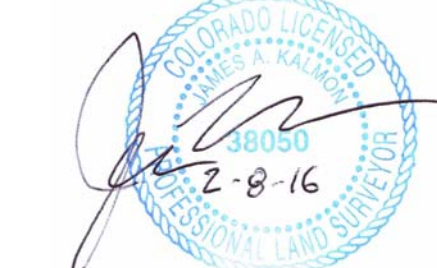


## NOTES:

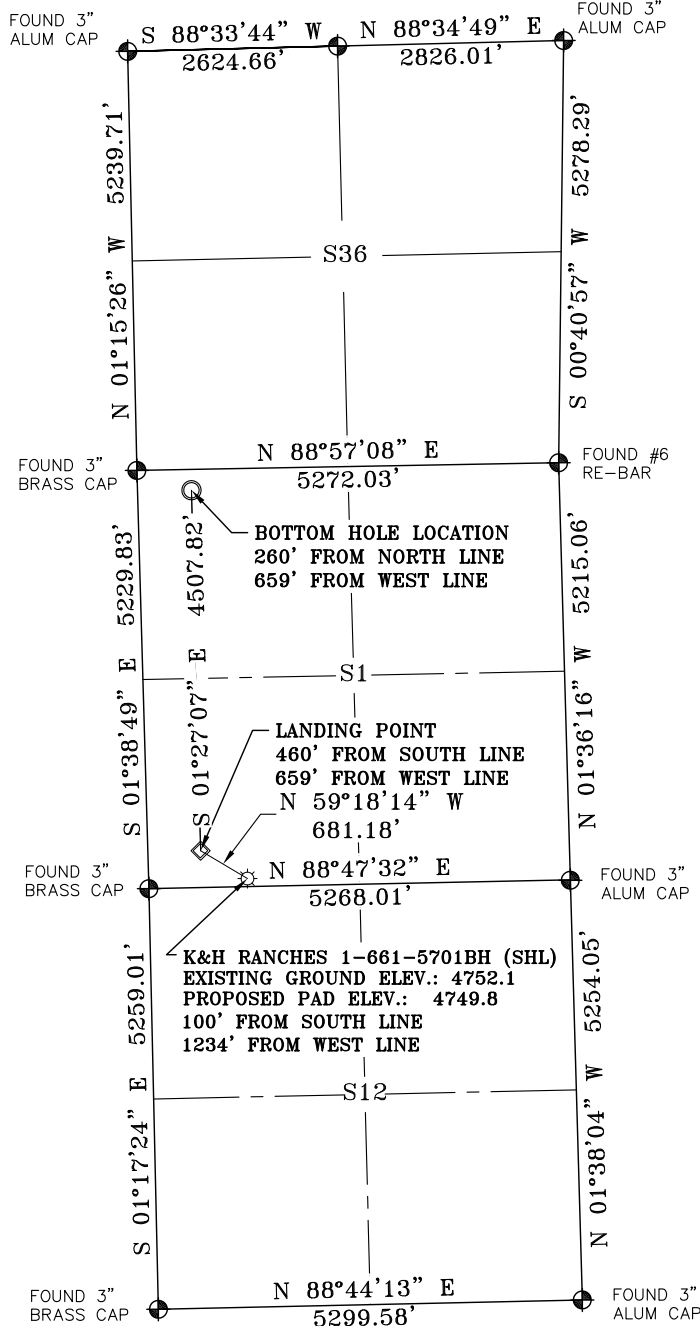
- 1) ELEVATIONS ARE BASED ON NGS STATION "PARACHINI" WITH A PUBLISHED ELEVATION OF 1434.1 METERS.
- 2) LATITUDES AND LONGITUDES ARE BASED ON NAD 83 COLORADO NORTH ZONE.
- 3) WELL MEASURED 90° FROM SECTION LINES.
- 4) THE BASIS OF BEARING IS FROM GPS OBSERVATION RESULTING IN THE BEARING BETWEEN THE FOUND MONUMENTS AS SHOWN.
- 5) ELEVATION MASK SET TO 15°
- 6) PDOP SET TO 6

## SURVEYORS STATEMENT:

I, JAMES A. KALMON, A REGISTERED LAND SURVEYOR IN THE STATE OF COLORADO DO HEREBY CERTIFY THAT THE SURVEY SHOWN HEREON WAS PREPARED BY ME OR UNDER MY DIRECT SUPERVISION AND THAT THIS PLAT IS A TRUE REPRESENTATION THEREOF. I FURTHER CERTIFY THAT THIS LOCATION HAS BEEN STAKED ON THE GROUND AS SHOWN ON THIS PLAT.



JAMES A. KALMON, COLORADO REGISTRATION NO. 38050  
FOR AND ON BEHALF OF ECLIPSE SURVEYING, INC.



### CLOSEST WELL IN SAME FORMATION

WELL NAME	DIRECTION	DISTANCE	
K&H RANCHES 1-661-5701AH	N 88°33' E	158'	PROPOSED
	N/A	>1 MILE	EXISTING

	WELL NAME	NORTHING	EASTING	LAT NAD 83	LONG NAD 83
SHL	K&H RANCHES 1-661-5701BH	1431544.5	3371968.6	N 40.510288	W 104.162208
LPL	LANDING POINT LOCATION	1431892.2	3371382.8	N 40.511267	W 104.164296
BHL	BOTTOM HOLE LOCATION	1436398.6	3371268.6	N 40.523640	W 104.164462



**ECLIPSE**  
Surveying, Inc.  
1874 Six Lazy K Rd., New Castle, CO 81647  
(970) 876-5939

REV. DATE: 02/08/16  
SCALE: 1" = 2400'  
DATE: 01/12/16  
SHEET: 1 OF 1  
PROJECT: S1-661  
DFT: JAK



600 17th Street, Suite 1600 North, Denver, CO 80202

S1/2SW1/4 SEC 1, T6N, R61W, 6TH PM  
WELD COUNTY, COLORADO