



# WELLBORE DIAGRAM

Final P&A WBD

660' FSL & 1000' FWL

Operator: The California Company  
Well Name: Francis Steckel 1  
Lease Number:  
Location: SWSW 14-T8N-R66W  
Field: Pierce  
County, State: Weld, CO  
API Number: 05-123-05553  
Diagram Date: 3/4/2016  
Lat/Long: 40.655921/-104.751463

KB 5083'

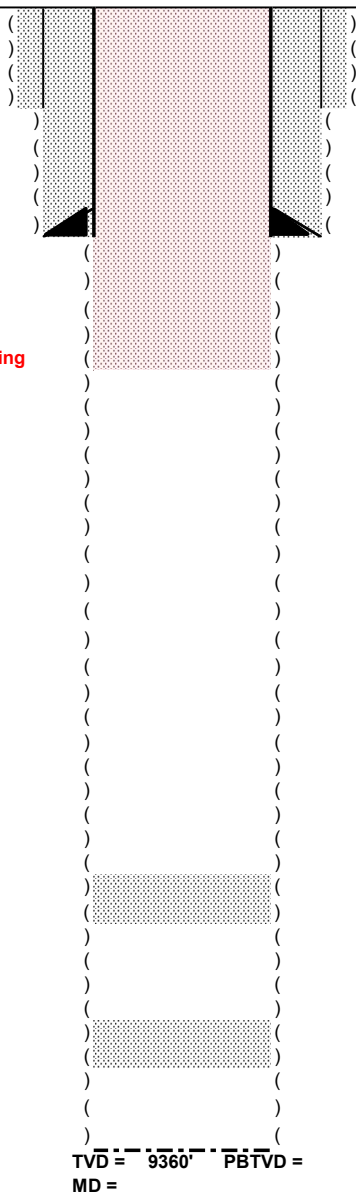
GL 5070'

Cut an cap at surface  
Top off with 10 sx

Drilled cement to 1420'  
Pump 490 sx 1.15 ft3/sx  
Class G from 1420 ft to surface  
Could never wash without rotating  
Metal encountered at 1236 ft

Placed 50 sx. Slo-set cement,  
balanced plug across top of  
muddy from 7813-7975' (9/20/57)

Placed 50 sx. Slo-set cement,  
balanced plug across top of  
lyons from 9129-9291' (9/20/57)



## Well History

Spud Date: 8/19/1957  
Date TD Reached: 9/20/1957  
Original PA Date: 9/20/1957  
Subsequent PA Date: 10/11/2016

## Conductor Casing

18" culvert set @ 31' GL  
Cmt w/ 5-1/2 yds of Redi-Mix

## Surface Casing

9-5/8" 40# J-55 set @ 411'  
cmt'd w/ 375 sx

## Production Casing

No production casing  
7-7/8" open hole to TD

## Formation Tops

Deepest Water Well:	48'
Base Fox Hills:	1358'
Hygiene	3972'
Niobrara	7158'
Timpas	7447'
Carlile	7466'
Greenhorn	7682'
Graneros	7768'
Muddy	7966'
Skull Creek	8100'
Dakota	8210'
Morrison	8360'
Entrada	8604'
Lykins	8640'
Lyons	9278'

## Perforation/Frac Details

No perforations

TVD = 9360' PBTV =  
MD =