



October 4, 2016

Colorado Oil and Gas Conservation Commission
The Chancery Building
1120 Lincoln Street, Suite 801
Denver, CO 80203
Attn: Mr. Matt Lepore, Director

RE: Judy 34-3-12, Doc # 401102076
Section 34: SWSE Township 1N, Range 65 West, 6th P.M.
Weld County, Colorado

Dear Director:

Edge Energy, LLC. ("Edge") is planning to drill the captioned boundary well in accordance with the provisions of COGCC Rule 318A.e.

Edge's proposed wellbore spacing unit consists of the E2W2, W2E2 Sec. 3, T1S, R65W, creating a 320-acre wellbore spacing unit for the Codell formation. Edge is the only working interest owner within the proposed wellbore spacing unit, therefore Edge hereby attest that no notice letters are required under COGCC Rule 318Ae.(5).

Enclosed are copies of the following documents to assist you in your review and approval of Edge's proposed APD for the captioned well:

- Plat illustrating proposed wellbore spacing unit.

Thank you for your attention to the enclosed. Edge respectfully requests that the COGCC review the enclosed information and approve the Application for Permit to Drill the captioned well.

Sincerely,

Julie Webb
Regulatory Analyst
Edge Energy LLC

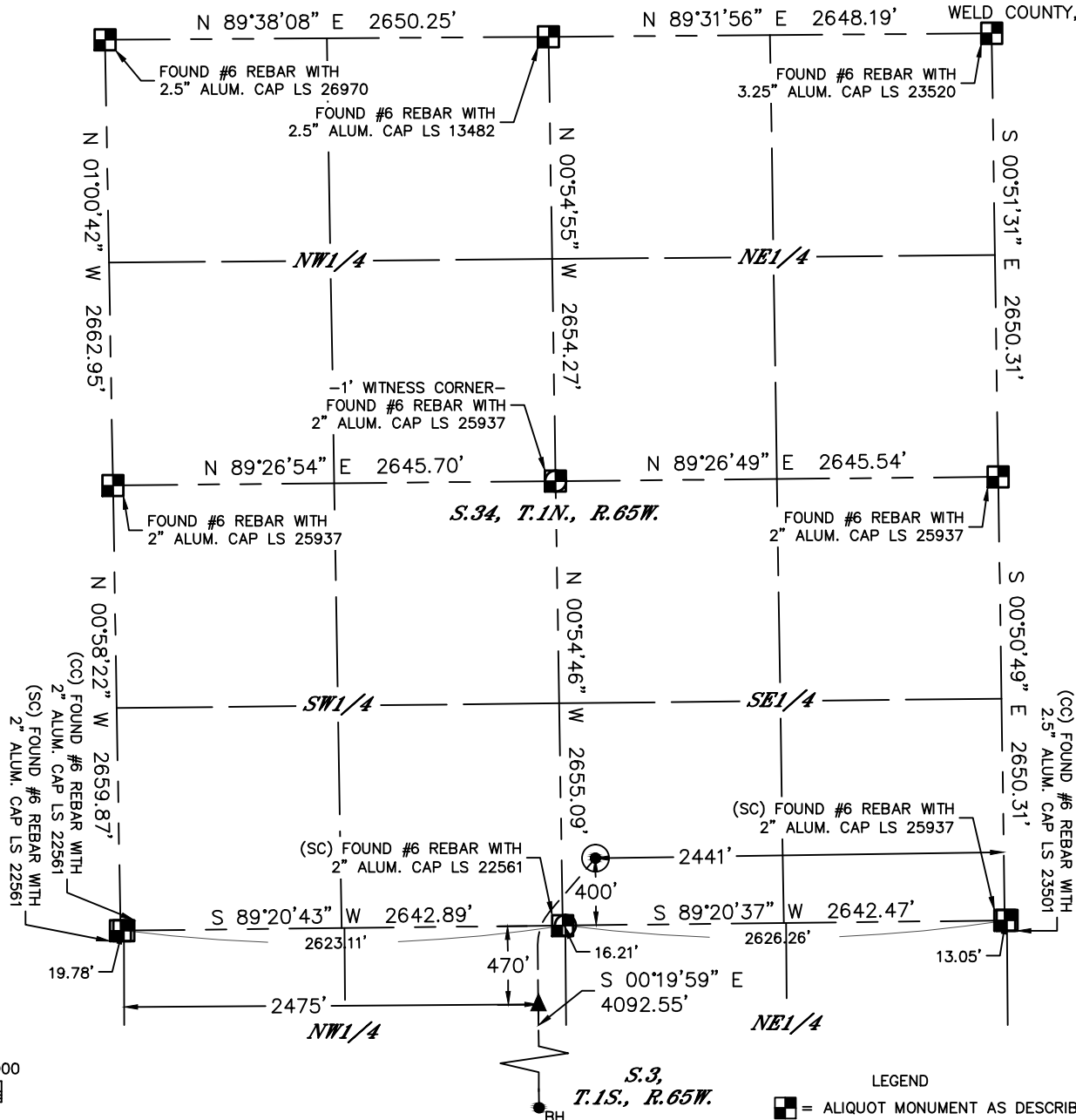


Lat40°, Inc. 6250 W. 10th Street, Unit 2, Greeley, CO 970-515-5294

WELL LOCATION CERTIFICATE

JUDY 34-3-12

SECTION: 34
TOWNSHIP: 1N
RANGE: 65W
6TH. P.M.
WELD COUNTY, CO



CLIENT: EDGE ENERGY				LANDMAN: ERIK LARSEN		
INSTRUMENT OPERATOR: JIM RIEB				SURVEY DATE: 7/28/2016		SURFACE USE: CROP LAND
SHL FOOTAGE		SHL LAT°	SHL LONG°	SHL PDOP	SHL ELEV	SHL 1/4/1/4
400	FSL	2441	FEL	40.00166	-104.64939	2.2
					5133	SWSE
						34-1N-65

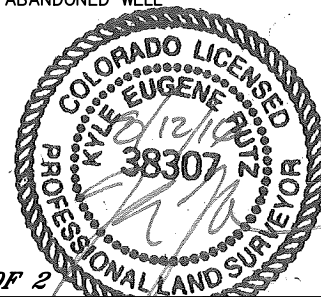
BHL FOOTAGE		BHL LAT°	BHL LONG°	BHL S-T-R	EP LAT°	EP LONG°	EP S-T-R
470	FSL	2475	FWL	39.98804	-104.65069	3-1S-65	39.99927
					-104.65064		3-1S-65

NOTE:

- 1) Bearings shown are Grid Bearings of the Colorado State Plane Coordinate System, North Zone, North American Datum 1983. The lineal dimensions as contained herein are based upon the "U.S. Survey Foot."
- 2) Distances to section lines measured at 90 degrees from said section lines.
- 3) Ground elevations are based on an observed GPS elevation (NAVD 1988 DATUM).
- 4) Latitude and Longitude shown are (NAD 83 DATUM).
- 5) IMPROVEMENTS: See LOCATION DRAWING for all visible improvements within 500' of oil and gas location.
- 6) This map does not represent a boundary survey.

NEAREST CULTURAL ITEMS	
BUILDING	±587' NW
BUILDING UNIT	±737' SW
HIGH OCCUPANCY BUILDING UNIT	5280'+
DESIGNATED OUTSIDE ACTIVITY AREA	5280'+
PUBLIC ROAD (COUNTY ROAD 2)	±384' S
ABOVE GROUND UTILITY	±2723' NE
RAILROAD	5280'+
PROPERTY LINE	±282' W

- LEGEND
- = ALIQUOT MONUMENT AS DESCRIBED
 - = CALCULATED POSITION
 - = SURFACE HOLE LOCATION (SHL)
 - ▲ = ENTRY POINT LOCATION (EP)
 - BH = BOTTOM HOLE LOCATION (BHL)
 - ⊙ = EXISTING WELL
 - ⊙ = ABANDONED WELL



SHEET 1 OF 2

Kyle E. Rutz—On behalf of Lat40, Inc.
Colorado Licensed Professional Land Surveyor No. 38307
DATE: 8/12/2016
PROJECT#: 2016079

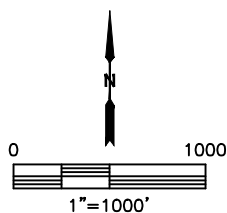
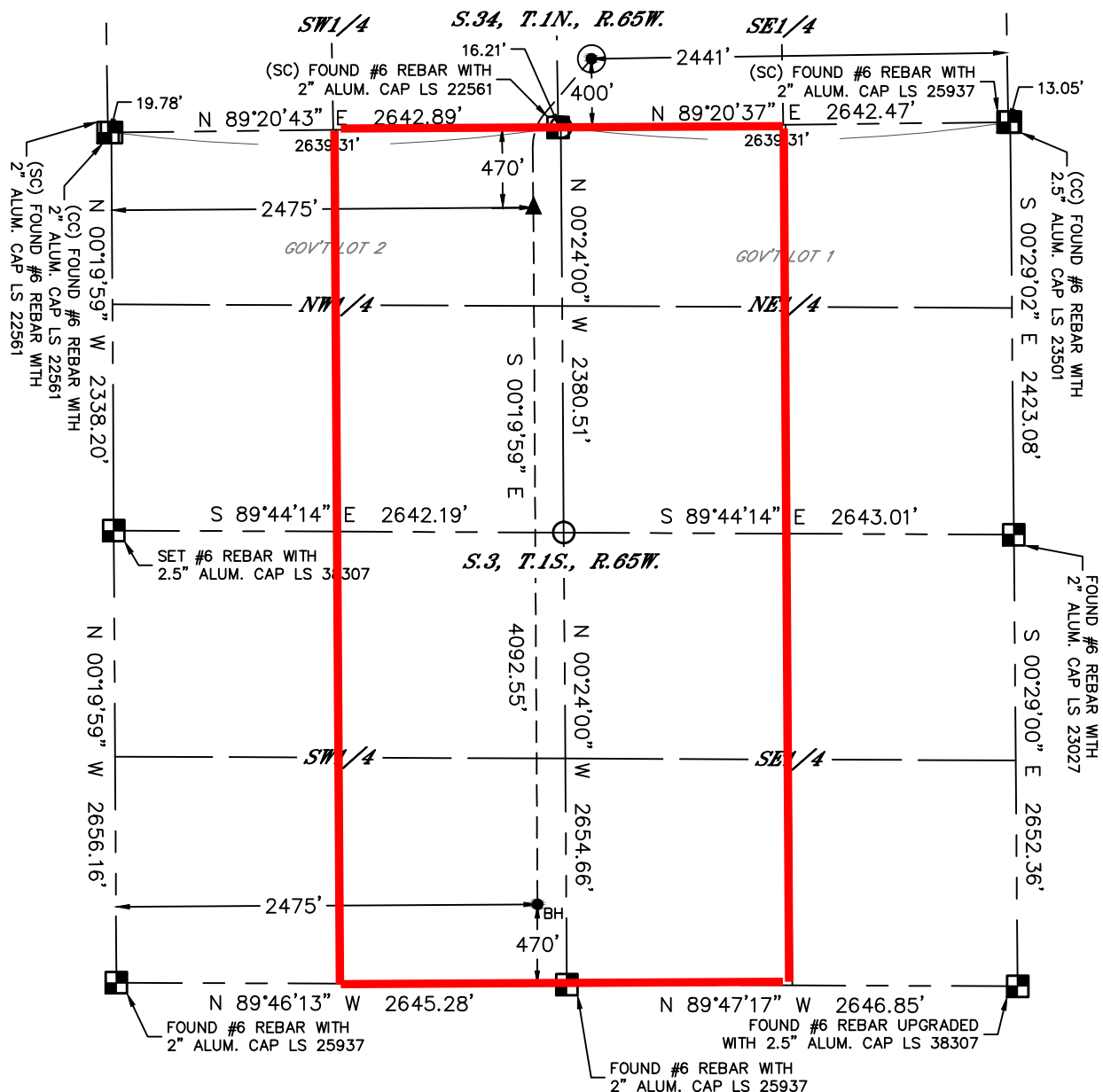


Lat40°, Inc. 6250 W. 10th Street, Unit 2, Greeley, CO 970-515-5294

WELL LOCATION CERTIFICATE

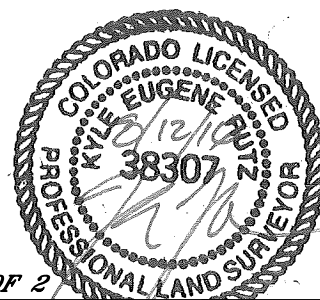
JUDY 34-3-12

SECTION: 34
TOWNSHIP: 1N
RANGE: 65W
6TH. P.M.
WELD COUNTY, CO



LEGEND

- = ALIQUOT MONUMENT AS DESCRIBED
- = CALCULATED POSITION
- ⊙ = SURFACE HOLE LOCATION (SHL)
- ▲ = ENTRY POINT LOCATION (EP)
- _{BH} = BOTTOM HOLE LOCATION (BHL)
- ⊕ = EXISTING WELL
- ⊖ = ABANDONED WELL



SHEET 2 OF 2

Kyle E. Rutz—On behalf of Lat40, Inc.
Colorado Licensed Professional Land Surveyor No. 38307
DATE: 8/12/2016
PROJECT#: 2016079