



July 13, 2016

Mr. Matthew Lepore, Director
Colorado Oil & Gas Conservation Commission
1120 Lincoln Street, Ste. 801
Denver, Colorado 80203

RE: Rule 318.A.e.
GP-J Evans 1-20-24
GP-J Evans C2-20-24

Surface Location: NENE, Section 20, Township 5 North, Range 65 West, Weld County, CO

Dear Mr. Lepore,

Extraction Oil and Gas is planning to drill the captioned horizontal wells in accordance with the provision of COGCC Rule 318A.e.

The proposed wellbore spacing unit consists of:

Section 24-5N-66W: NE/4
Section 19-5N-65W: N/2
Section 20-5N-65W: NW/4

The spacing unit is a 640-acre wellbore spacing unit for the Niobrara and Codell formations.

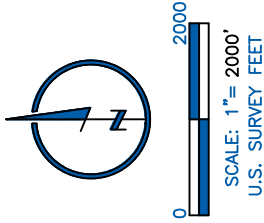
Extraction Oil and Gas hereby certifies to the Director that all Owners within the proposed spacing unit above were notified and 30 days have passed without objection.

If you have any questions or issues regarding this permit, please contact Alyssa Andrews at (720) 481-2379.

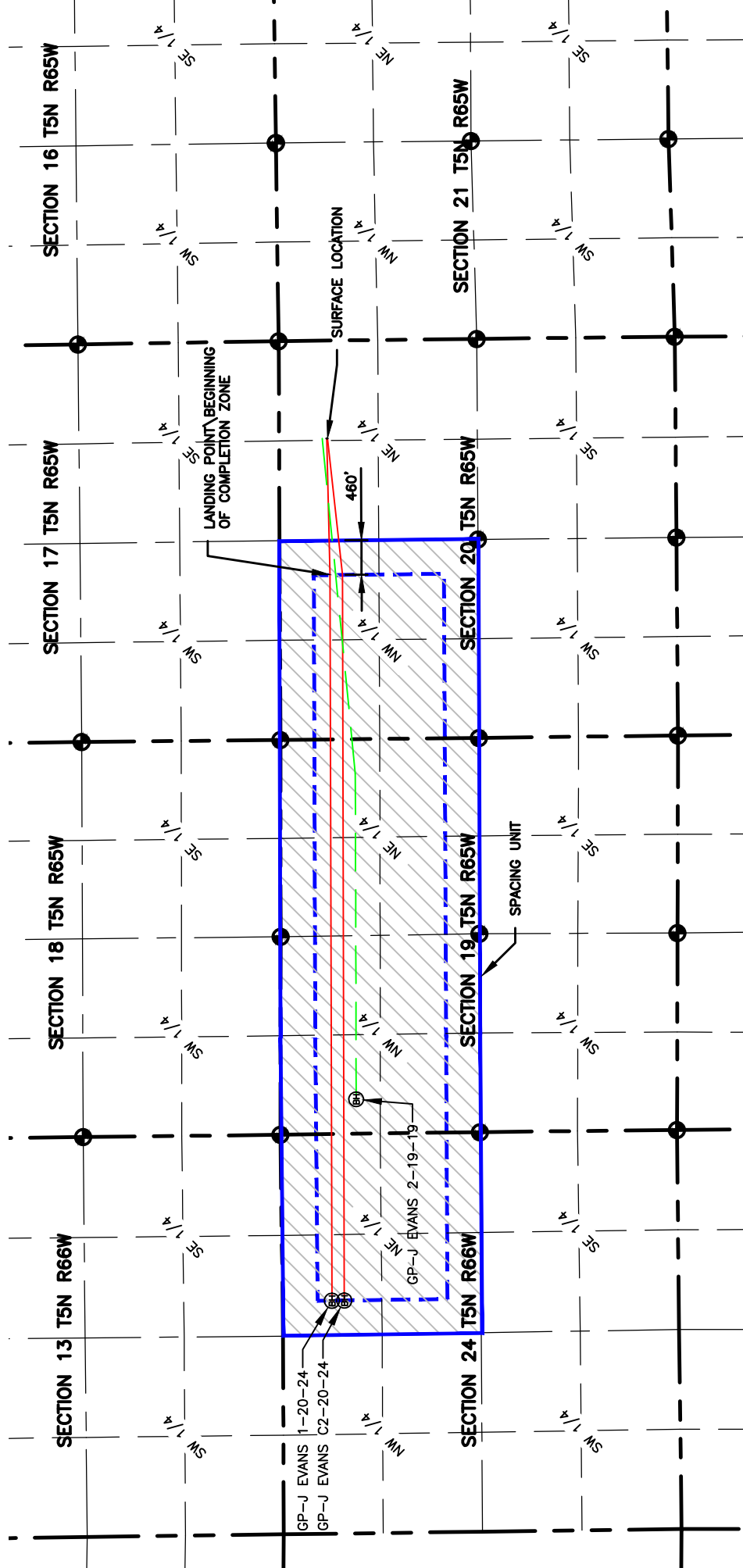
Sincerely,


Alyssa Andrews
Regulatory Analyst
Extraction Oil & Gas, LLC

NAME: J EVANS
 SPACING UNIT: NE/4 SEC 24, T5N, 66W, N/2 SEC 19, NW/4 SEC 20, T5N, 65W UNIT ACREAGE: 640



WELL NAME	SURFACE LOCATION				LANDING POINT\BEGIN HORIZONTAL COMPLETION ZONE				BOTTOM HOLE\END HORIZONTAL COMPLETION ZONE				COMPLETION ZONE BEARING	COMPLETION ZONE LENGTH
	DIST.	DIR.	DIST.	DIR.	DIST.	DIR.	DIST.	DIR.	DIST.	DIR.	DIST.	DIR.		
GP-J EVANS 1-20-24	634'	FNL	1305'	FEL	672'	FNL	2199'	FWL	656'	FNL	2222'	FEL	S89°51'39"W	9678.39
GP-JEVANS C2-20-24	646'	FNL	1305'	FEL	837'	FNL	2194'	FWL	821'	FNL	2221'	FEL	S89°51'39"W	9676.54





LAMP RYNEARSON & ASSOCIATES

4715 Innovation Drive 970.226.0342 | P
 Fort Collins, CO 80525 970.226.0879 | F
 www.LRA-Inc.com

PLANNED SPACING UNIT EXHIBIT
 GREELEY DIRECTIONAL
 J EVANS SPACING UNIT

DRAWN BY
JMC

DATE
9/22/16

PATH/FILENAME
P:\engineering\0213001.01\DRAWINGS\EXHIBITS\Planned Spacing Unit\0213001-01.dwg

COGOC ID
332837

PROJECT - TASK NUMBER
0213001.01

BOOK AND PAGE
MR01/MR02

SURFACE - LOCATION
NE/4, NE/4, SEC20, T5N, R65W

LEGEND

● ALIQUOT CORNER	— SECTION LINE
⊙ BOTTOM HOLE	— SIXTEENTH LINE
△ COMPLETED ALIQUOT CORNER FROM MONUMENT ACCESSORIES	— QUARTER SECTION LINE
■ COMPUTED FROM GLO RECORDS	— EXISTING WELL