

EXTRACTION OIL & GAS

WELD COUNTY, COLORADO (NAD 83)

NE NE SEC. 20 T5N R65W 6th P.M.

GP-HILLSIDE 3-20-24

ORIGINAL WELLBORE

14 May, 2016

Plan: PROPOSAL #1

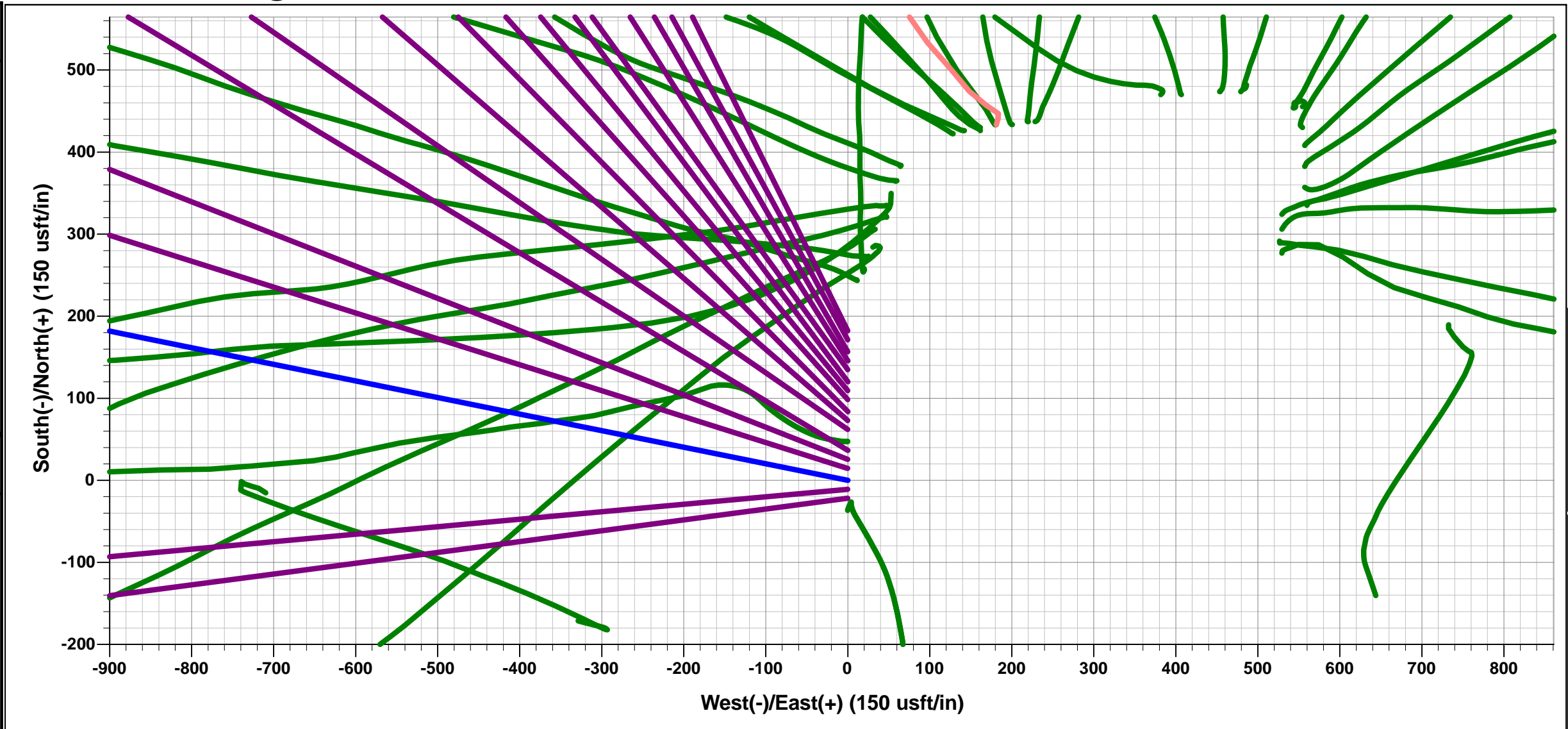




Project: WELD COUNTY, COLORADO (NAD 83)
Site: NE NE SEC. 20 T5N R65W 6th P.M.
Well: GP-HILLSIDE 3-20-24
Wellbore: ORIGINAL WELLBORE
Design: PROPOSAL #1

ANNOTATIONS									
TVD	MD	Inc	Azi	+N/-S	+E/-W	Vsect	Dep	Annotation	
1600.0	1600.0	0.00	0.00	0.0	0.0	0.0	0.0	9 5/8" SURFACE CASING	
2500.0	2500.0	0.00	0.00	0.0	0.0	0.0	0.0	START NUDGE (2°/100ft BUR)	
3497.0	3518.3	20.37	281.41	35.4	-175.6	176.6	179.1	EOB TO 20.37° INC	
6518.7	6741.5	20.37	281.41	257.4	-1275.1	1282.5	1300.9	KOP (10°/100ft DGLG)	
6895.0	7441.8	90.00	270.40	287.9	-1813.4	1821.5	1840.5	HZ LANDING PNT - GP-HILLSIDE 3-20-24	
6895.0	17124.7	90.00	270.40	356.1	-11496.1	11501.6	11523.4	BHL - GP-HILLSIDE 3-20-24	

WELLBORE TARGET DETAILS (LAT/LONG)					
Name	TVD	+N/-S	+E/-W	Latitude	Longitude
HZ LANDING PNT - GP-HILLSIDE 3-20-24	6895.0	287.9	-1813.4	40.390940	-104.689020
BHL - GP-HILLSIDE 3-20-24	6895.0	356.1	-11496.1	40.391120	-104.723780



FORMATION TOP DETAILS		
TVDPath	MDPath	Formation
3686.0	3719.9	PARKMAN
4425.0	4508.2	SUSSEX
4935.0	5052.2	SHANNON
6740.0	7009.6	SHARON SPRINGS
6775.0	7063.7	NIOBARRA

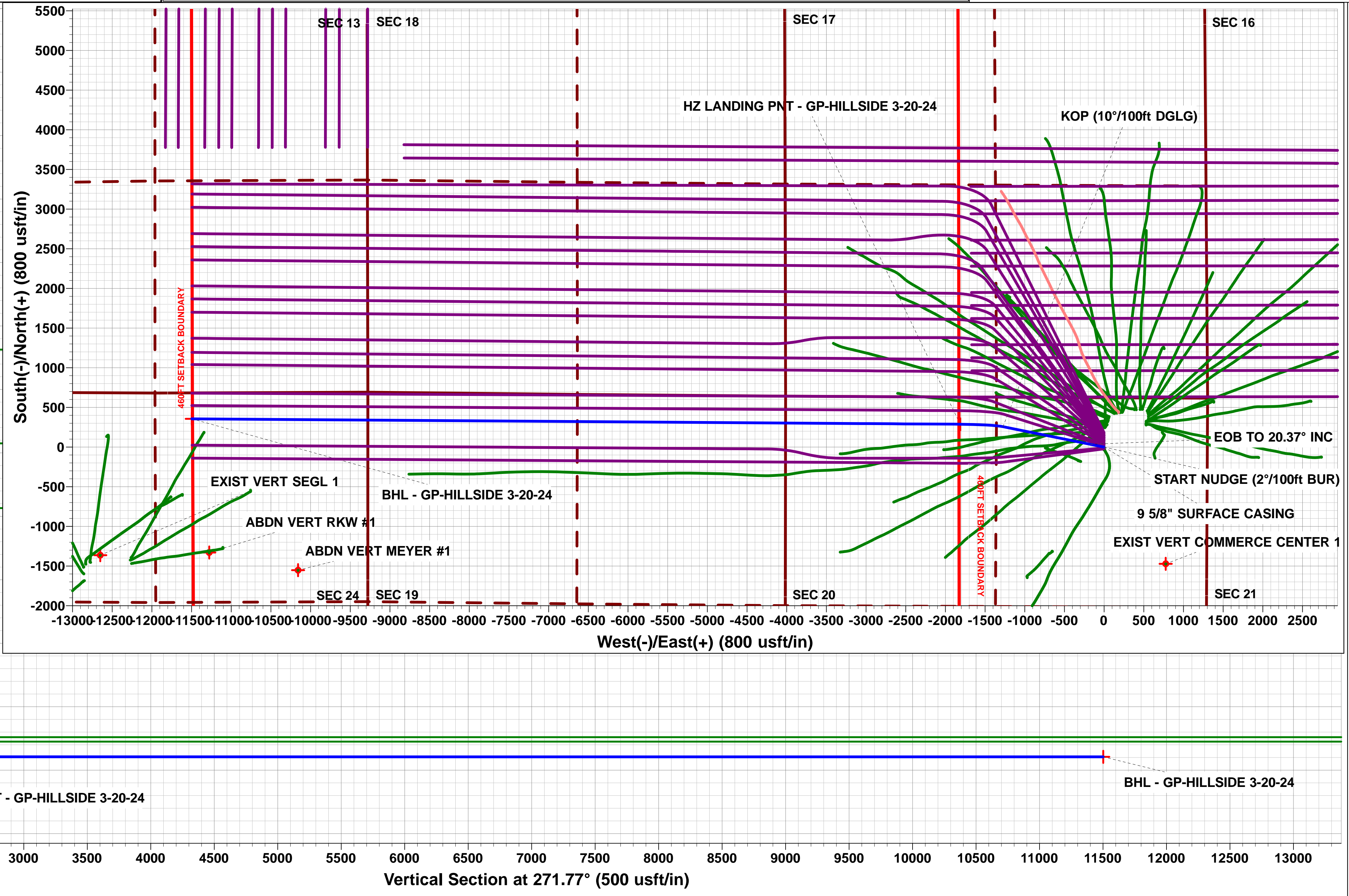
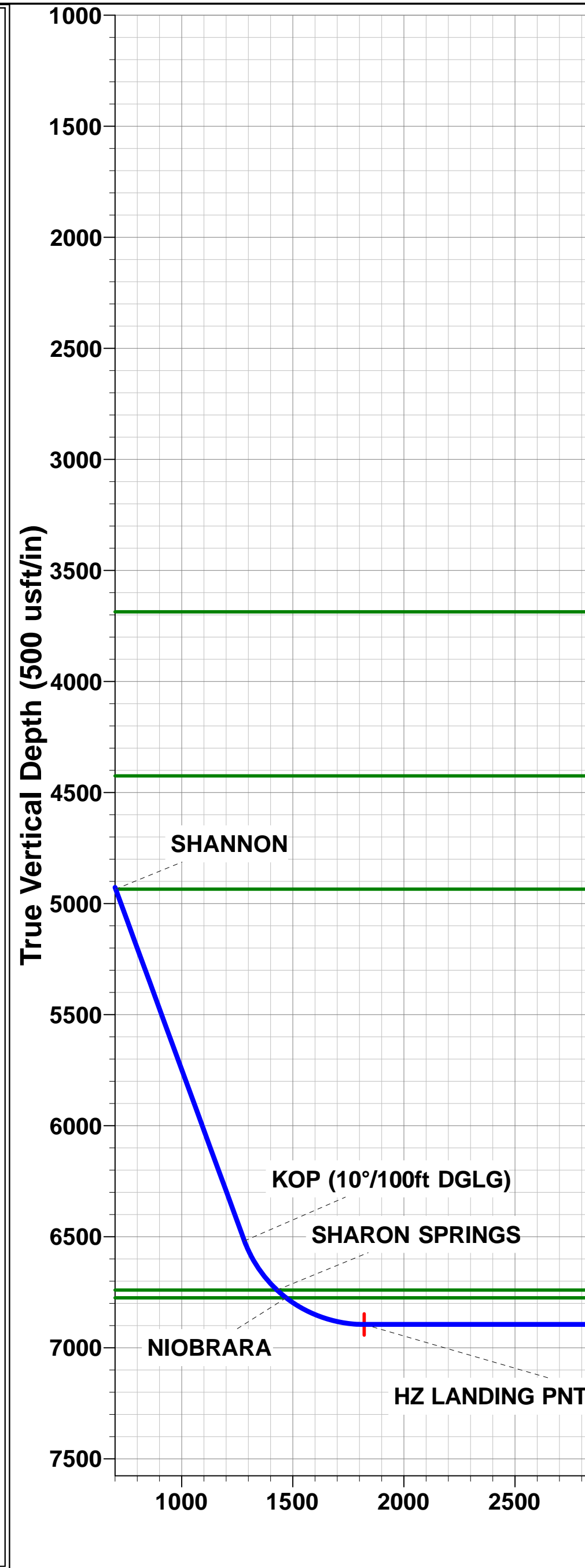
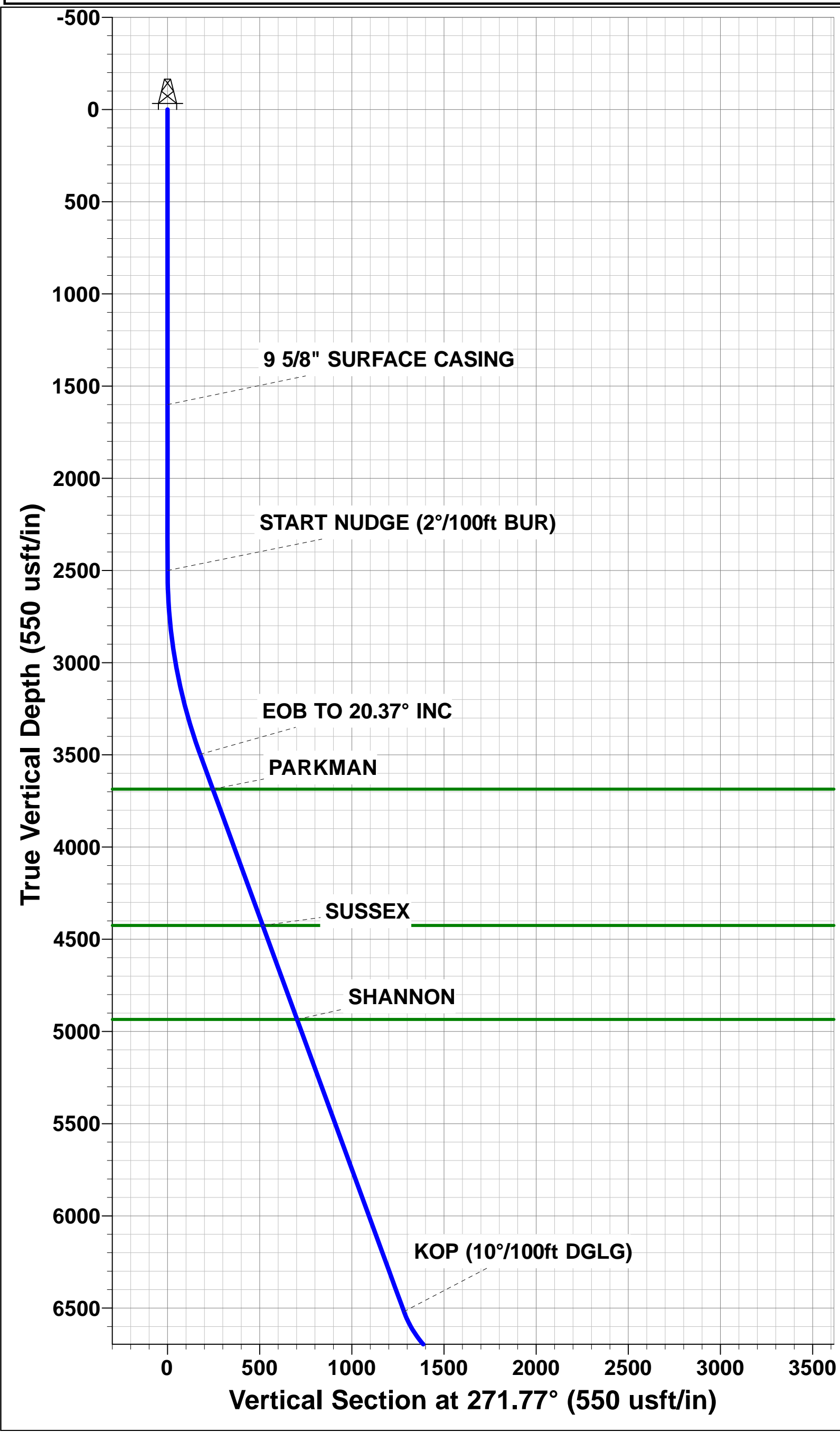
PROPOSED LOCAL COORDINATES		
SHL: 622ft FNL & 1305ft FEL of Sec 20		
LP *NEW*: 342ft FNL & 2198ft FWL of Sec 20		
BHL: 326ft FNL & 2223ft FEL of Sec 24		

T

M

Azimuths to True North
Magnetic North: 8.28°

Magnetic Field
Strength: 52521.7snT
Dip Angle: 66.89°
Date: 14/05/2016
Model: IGRF2015



Planning Report



Database:	EDM 5000.1 Single User Db	Local Co-ordinate Reference:	Well GP-HILLSIDE 3-20-24
Company:	EXTRACTION OIL & GAS	TVD Reference:	KB-EST @ 4688.0usft (Original Well Elev)
Project:	WELD COUNTY, COLORADO (NAD 83)	MD Reference:	KB-EST @ 4688.0usft (Original Well Elev)
Site:	NE NE SEC. 20 T5N R65W 6th P.M.	North Reference:	True
Well:	GP-HILLSIDE 3-20-24	Survey Calculation Method:	Minimum Curvature
Wellbore:	ORIGINAL WELLBORE		
Design:	PROPOSAL #1		

Project	WELD COUNTY, COLORADO (NAD 83)		
Map System:	US State Plane 1983	System Datum:	Mean Sea Level
Geo Datum:	North American Datum 1983		
Map Zone:	Colorado Northern Zone		Using geodetic scale factor

Site		NE NE SEC. 20 T5N R65W 6th P.M.			
Site Position:		Northing:	1,386,203.84 usft	Latitude:	40.390650
From:	Lat/Long	Easting:	3,227,707.61 usft	Longitude:	-104.682510
Position Uncertainty:	0.0 usft	Slot Radius:	1.10000 ft	Grid Convergence:	0.53 °

Well	GP-HILLSIDE 3-20-24					
Well Position	+N/-S	-182.2 usft	Northing:	1,386,021.69 usft	Latitude:	40.390150
	+E/-W	0.0 usft	Easting:	3,227,709.29 usft	Longitude:	-104.682510
Position Uncertainty		0.0 usft	Wellhead Elevation:	usft	Ground Level:	4,672.0 usft

Wellbore	ORIGINAL WELLBORE				
Magnetics	Model Name	Sample Date	Declination (°)	Dip Angle (°)	Field Strength (nT)
	IGRF2015	14/05/2016	8.28	66.89	52,522

Design	PROPOSAL #1			
Audit Notes:				
Version:	Phase:	PROTOTYPE	Tie On Depth:	0.0
Vertical Section:	Depth From (TVD) (usft)	+N/-S (usft)	+E/-W (usft)	Direction (°)
	6,895.0	0.0	0.0	271.77

Plan Sections											
MD (usft)	Inc (°)	Azi (°)	Vertical Depth	SS (usft)	+N/-S (usft)	+E/-W (usft)	Dogleg Rate (°/100usf)	Build Rate (°/100usf)	Turn Rate (°/100usf)	TFO (°)	Target
0.0	0.00	0.00	0.0	-4,688.0	0.0	0.0	0.00	0.00	0.00	0.00	
2,500.0	0.00	0.00	2,500.0	-2,188.0	0.0	0.0	0.00	0.00	0.00	0.00	
3,518.3	20.37	281.41	3,497.0	-1,191.0	35.4	-175.6	2.00	2.00	0.00	281.41	
6,741.5	20.37	281.41	6,518.7	1,830.7	257.4	-1,275.1	0.00	0.00	0.00	0.00	
7,441.8	90.00	270.40	6,895.0	2,207.0	287.9	-1,813.4	10.00	9.94	-1.57	-11.72	HZ LANDING PNT
17,124.7	90.00	270.40	6,895.0	2,207.0	356.1	-11,496.1	0.00	0.00	0.00	0.00	BHL - GP-HILLSIDE

Planning Report



Database:	EDM 5000.1 Single User Db	Local Co-ordinate Reference:	Well GP-HILLSIDE 3-20-24
Company:	EXTRACTION OIL & GAS	TVD Reference:	KB-EST @ 4688.0usft (Original Well Elev)
Project:	WELD COUNTY, COLORADO (NAD 83)	MD Reference:	KB-EST @ 4688.0usft (Original Well Elev)
Site:	NE NE SEC. 20 T5N R65W 6th P.M.	North Reference:	True
Well:	GP-HILLSIDE 3-20-24	Survey Calculation Method:	Minimum Curvature
Wellbore:	ORIGINAL WELLBORE		
Design:	PROPOSAL #1		

Planned Survey

MD (usft)	Inc (°)	Azi (°)	TVD (usft)	SS (usft)	+N/-S (usft)	+E/-W (usft)	Vertical Section (usft)	Dogleg Rate (°/100usft)	Build Rate (°/100usft)	Turn Rate (°/100usft)
0.0	0.00	0.00	0.0	4,688.00	0.0	0.0	0.0	0.00	0.00	0.00
100.0	0.00	0.00	100.0	4,588.00	0.0	0.0	0.0	0.00	0.00	0.00
200.0	0.00	0.00	200.0	4,488.00	0.0	0.0	0.0	0.00	0.00	0.00
300.0	0.00	0.00	300.0	4,388.00	0.0	0.0	0.0	0.00	0.00	0.00
400.0	0.00	0.00	400.0	4,288.00	0.0	0.0	0.0	0.00	0.00	0.00
500.0	0.00	0.00	500.0	4,188.00	0.0	0.0	0.0	0.00	0.00	0.00
600.0	0.00	0.00	600.0	4,088.00	0.0	0.0	0.0	0.00	0.00	0.00
700.0	0.00	0.00	700.0	3,988.00	0.0	0.0	0.0	0.00	0.00	0.00
800.0	0.00	0.00	800.0	3,888.00	0.0	0.0	0.0	0.00	0.00	0.00
900.0	0.00	0.00	900.0	3,788.00	0.0	0.0	0.0	0.00	0.00	0.00
1,000.0	0.00	0.00	1,000.0	3,688.00	0.0	0.0	0.0	0.00	0.00	0.00
1,100.0	0.00	0.00	1,100.0	3,588.00	0.0	0.0	0.0	0.00	0.00	0.00
1,200.0	0.00	0.00	1,200.0	3,488.00	0.0	0.0	0.0	0.00	0.00	0.00
1,300.0	0.00	0.00	1,300.0	3,388.00	0.0	0.0	0.0	0.00	0.00	0.00
1,400.0	0.00	0.00	1,400.0	3,288.00	0.0	0.0	0.0	0.00	0.00	0.00
1,500.0	0.00	0.00	1,500.0	3,188.00	0.0	0.0	0.0	0.00	0.00	0.00
9 5/8" SURFACE CASING										
1,600.0	0.00	0.00	1,600.0	3,088.00	0.0	0.0	0.0	0.00	0.00	0.00
1,700.0	0.00	0.00	1,700.0	2,988.00	0.0	0.0	0.0	0.00	0.00	0.00
1,800.0	0.00	0.00	1,800.0	2,888.00	0.0	0.0	0.0	0.00	0.00	0.00
1,900.0	0.00	0.00	1,900.0	2,788.00	0.0	0.0	0.0	0.00	0.00	0.00
2,000.0	0.00	0.00	2,000.0	2,688.00	0.0	0.0	0.0	0.00	0.00	0.00
2,100.0	0.00	0.00	2,100.0	2,588.00	0.0	0.0	0.0	0.00	0.00	0.00
2,200.0	0.00	0.00	2,200.0	2,488.00	0.0	0.0	0.0	0.00	0.00	0.00
2,300.0	0.00	0.00	2,300.0	2,388.00	0.0	0.0	0.0	0.00	0.00	0.00
2,400.0	0.00	0.00	2,400.0	2,288.00	0.0	0.0	0.0	0.00	0.00	0.00
START NUDGE (2°/100ft BUR)										
2,500.0	0.00	0.00	2,500.0	2,188.00	0.0	0.0	0.0	0.00	0.00	0.00
2,600.0	2.00	281.41	2,600.0	2,088.02	0.3	-1.7	1.7	2.00	2.00	0.00
2,700.0	4.00	281.41	2,699.8	1,988.16	1.4	-6.8	6.9	2.00	2.00	0.00
2,800.0	6.00	281.41	2,799.5	1,888.55	3.1	-15.4	15.5	2.00	2.00	0.00
2,900.0	8.00	281.41	2,898.7	1,789.30	5.5	-27.3	27.5	2.00	2.00	0.00
3,000.0	10.00	281.41	2,997.5	1,690.53	8.6	-42.7	42.9	2.00	2.00	0.00
3,100.0	12.00	281.41	3,095.6	1,592.38	12.4	-61.4	61.7	2.00	2.00	0.00
3,200.0	14.00	281.41	3,193.1	1,494.94	16.8	-83.4	83.9	2.00	2.00	0.00
3,300.0	16.00	281.41	3,289.6	1,398.36	22.0	-108.8	109.4	2.00	2.00	0.00
3,400.0	18.00	281.41	3,385.3	1,302.73	27.7	-137.4	138.2	2.00	2.00	0.00
3,500.0	20.00	281.41	3,479.8	1,208.18	34.2	-169.4	170.3	2.00	2.00	0.00
EOB TO 20.37° INC										
3,518.3	20.37	281.41	3,497.0	1,190.98	35.4	-175.6	176.6	2.00	2.00	0.00
3,600.0	20.37	281.41	3,573.6	1,114.42	41.1	-203.4	204.6	0.00	0.00	0.00
3,700.0	20.37	281.41	3,667.3	1,020.67	47.9	-237.5	238.9	0.00	0.00	0.00
PARKMAN										
3,719.9	20.37	281.41	3,686.0	1,002.00	49.3	-244.3	245.7	0.00	0.00	0.00
3,800.0	20.37	281.41	3,761.1	926.92	54.8	-271.6	273.2	0.00	0.00	0.00
3,900.0	20.37	281.41	3,854.8	833.17	61.7	-305.8	307.5	0.00	0.00	0.00
4,000.0	20.37	281.41	3,948.6	739.42	68.6	-339.9	341.8	0.00	0.00	0.00
4,100.0	20.37	281.41	4,042.3	645.67	75.5	-374.0	376.1	0.00	0.00	0.00
4,200.0	20.37	281.41	4,136.1	551.93	82.4	-408.1	410.5	0.00	0.00	0.00
4,300.0	20.37	281.41	4,229.8	458.18	89.3	-442.2	444.8	0.00	0.00	0.00
4,400.0	20.37	281.41	4,323.6	364.43	96.2	-476.3	479.1	0.00	0.00	0.00
4,500.0	20.37	281.41	4,417.3	270.68	103.0	-510.4	513.4	0.00	0.00	0.00
SUSSEX										
4,508.2	20.37	281.41	4,425.0	263.00	103.6	-513.2	516.2	0.00	0.00	0.00

Planning Report



Database:	EDM 5000.1 Single User Db	Local Co-ordinate Reference:	Well GP-HILLSIDE 3-20-24
Company:	EXTRACTION OIL & GAS	TVD Reference:	KB-EST @ 4688.0usft (Original Well Elev)
Project:	WELD COUNTY, COLORADO (NAD 83)	MD Reference:	KB-EST @ 4688.0usft (Original Well Elev)
Site:	NE NE SEC. 20 T5N R65W 6th P.M.	North Reference:	True
Well:	GP-HILLSIDE 3-20-24	Survey Calculation Method:	Minimum Curvature
Wellbore:	ORIGINAL WELLBORE		
Design:	PROPOSAL #1		

Planned Survey

MD (usft)	Inc (°)	Azi (°)	TVD (usft)	SS (usft)	+N/-S (usft)	+E/-W (usft)	Vertical Section (usft)	Dogleg Rate (°/100usft)	Build Rate (°/100usft)	Turn Rate (°/100usft)
4,600.0	20.37	281.41	4,511.1	176.93	109.9	-544.6	547.7	0.00	0.00	0.00
4,700.0	20.37	281.41	4,604.8	83.18	116.8	-578.7	582.0	0.00	0.00	0.00
4,800.0	20.37	281.41	4,698.6	-10.57	123.7	-612.8	616.3	0.00	0.00	0.00
4,900.0	20.37	281.41	4,792.3	-104.31	130.6	-646.9	650.6	0.00	0.00	0.00
5,000.0	20.37	281.41	4,886.1	-198.06	137.5	-681.0	684.9	0.00	0.00	0.00
SHANNON										
5,052.2	20.37	281.41	4,935.0	-247.00	141.1	-698.8	702.9	0.00	0.00	0.00
5,100.0	20.37	281.41	4,979.8	-291.81	144.4	-715.1	719.3	0.00	0.00	0.00
5,200.0	20.37	281.41	5,073.6	-385.56	151.3	-749.2	753.6	0.00	0.00	0.00
5,300.0	20.37	281.41	5,167.3	-479.31	158.1	-783.4	787.9	0.00	0.00	0.00
5,400.0	20.37	281.41	5,261.1	-573.06	165.0	-817.5	822.2	0.00	0.00	0.00
5,500.0	20.37	281.41	5,354.8	-666.80	171.9	-851.6	856.5	0.00	0.00	0.00
5,600.0	20.37	281.41	5,448.6	-760.55	178.8	-885.7	890.8	0.00	0.00	0.00
5,700.0	20.37	281.41	5,542.3	-854.30	185.7	-919.8	925.1	0.00	0.00	0.00
5,800.0	20.37	281.41	5,636.1	-948.05	192.6	-953.9	959.4	0.00	0.00	0.00
5,900.0	20.37	281.41	5,729.8	-1,041.80	199.5	-988.0	993.7	0.00	0.00	0.00
6,000.0	20.37	281.41	5,823.5	-1,135.55	206.3	-1,022.2	1,028.1	0.00	0.00	0.00
6,100.0	20.37	281.41	5,917.3	-1,229.30	213.2	-1,056.3	1,062.4	0.00	0.00	0.00
6,200.0	20.37	281.41	6,011.0	-1,323.04	220.1	-1,090.4	1,096.7	0.00	0.00	0.00
6,300.0	20.37	281.41	6,104.8	-1,416.79	227.0	-1,124.5	1,131.0	0.00	0.00	0.00
6,400.0	20.37	281.41	6,198.5	-1,510.54	233.9	-1,158.6	1,165.3	0.00	0.00	0.00
6,500.0	20.37	281.41	6,292.3	-1,604.29	240.8	-1,192.7	1,199.6	0.00	0.00	0.00
6,600.0	20.37	281.41	6,386.0	-1,698.04	247.7	-1,226.8	1,233.9	0.00	0.00	0.00
6,700.0	20.37	281.41	6,479.8	-1,791.79	254.6	-1,261.0	1,268.2	0.00	0.00	0.00
KOP (10°/100ft DGLG)										
6,741.5	20.37	281.41	6,518.7	-1,830.72	257.4	-1,275.1	1,282.5	0.00	0.00	0.00
6,800.0	26.12	278.72	6,572.4	-1,884.42	261.4	-1,297.8	1,305.3	10.00	9.84	-4.61
6,900.0	36.02	276.00	6,658.0	-1,969.98	267.8	-1,349.0	1,356.6	10.00	9.90	-2.72
7,000.0	45.96	274.33	6,733.4	-2,045.36	273.6	-1,414.2	1,422.0	10.00	9.94	-1.66
SHARON SPRINGS										
7,009.6	46.92	274.20	6,740.0	-2,052.00	274.1	-1,421.2	1,429.0	10.00	9.95	-1.35
NIOBRARA										
7,063.7	52.30	273.54	6,775.0	-2,087.00	276.9	-1,462.2	1,470.1	10.00	9.96	-1.22
7,100.0	55.92	273.15	6,796.3	-2,108.30	278.6	-1,491.6	1,499.5	10.00	9.96	-1.08
7,200.0	65.89	272.22	6,844.9	-2,156.87	282.7	-1,578.8	1,586.8	10.00	9.97	-0.93
7,300.0	75.86	271.43	6,877.6	-2,189.59	285.7	-1,673.1	1,681.1	10.00	9.97	-0.79
7,400.0	85.83	270.70	6,893.5	-2,205.48	287.5	-1,771.7	1,779.7	10.00	9.97	-0.73
HZ LANDING PNT - GP-HILLSIDE 3-20-24										
7,441.8	90.00	270.40	6,895.0	-2,207.00	287.9	-1,813.4	1,821.5	10.00	9.97	-0.71
7,500.0	90.00	270.40	6,895.0	-2,207.00	288.3	-1,871.6	1,879.7	0.00	0.00	0.00
7,600.0	90.00	270.40	6,895.0	-2,207.00	289.0	-1,971.6	1,979.6	0.00	0.00	0.00
7,700.0	90.00	270.40	6,895.0	-2,207.00	289.7	-2,071.6	2,079.6	0.00	0.00	0.00
7,800.0	90.00	270.40	6,895.0	-2,207.00	290.4	-2,171.6	2,179.6	0.00	0.00	0.00
7,900.0	90.00	270.40	6,895.0	-2,207.00	291.1	-2,271.6	2,279.6	0.00	0.00	0.00
8,000.0	90.00	270.40	6,895.0	-2,207.00	291.8	-2,371.6	2,379.5	0.00	0.00	0.00
8,100.0	90.00	270.40	6,895.0	-2,207.00	292.5	-2,471.6	2,479.5	0.00	0.00	0.00
8,200.0	90.00	270.40	6,895.0	-2,207.00	293.2	-2,571.6	2,579.5	0.00	0.00	0.00
8,300.0	90.00	270.40	6,895.0	-2,207.00	293.9	-2,671.6	2,679.4	0.00	0.00	0.00
8,400.0	90.00	270.40	6,895.0	-2,207.00	294.6	-2,771.6	2,779.4	0.00	0.00	0.00
8,500.0	90.00	270.40	6,895.0	-2,207.00	295.3	-2,871.6	2,879.4	0.00	0.00	0.00
8,600.0	90.00	270.40	6,895.0	-2,207.00	296.0	-2,971.6	2,979.4	0.00	0.00	0.00
8,700.0	90.00	270.40	6,895.0	-2,207.00	296.7	-3,071.6	3,079.3	0.00	0.00	0.00
8,800.0	90.00	270.40	6,895.0	-2,207.00	297.4	-3,171.6	3,179.3	0.00	0.00	0.00

Planning Report



Database:	EDM 5000.1 Single User Db	Local Co-ordinate Reference:	Well GP-HILLSIDE 3-20-24
Company:	EXTRACTION OIL & GAS	TVD Reference:	KB-EST @ 4688.0usft (Original Well Elev)
Project:	WELD COUNTY, COLORADO (NAD 83)	MD Reference:	KB-EST @ 4688.0usft (Original Well Elev)
Site:	NE NE SEC. 20 T5N R65W 6th P.M.	North Reference:	True
Well:	GP-HILLSIDE 3-20-24	Survey Calculation Method:	Minimum Curvature
Wellbore:	ORIGINAL WELLBORE		
Design:	PROPOSAL #1		

Planned Survey										
MD (usft)	Inc (°)	Azi (°)	TVD (usft)	SS (usft)	+N/-S (usft)	+E/-W (usft)	Vertical Section (usft)	Dogleg Rate (°/100usft)	Build Rate (°/100usft)	Turn Rate (°/100usft)
8,900.0	90.00	270.40	6,895.0	-2,207.00	298.1	-3,271.6	3,279.3	0.00	0.00	0.00
9,000.0	90.00	270.40	6,895.0	-2,207.00	298.9	-3,371.6	3,379.2	0.00	0.00	0.00
9,100.0	90.00	270.40	6,895.0	-2,207.00	299.6	-3,471.6	3,479.2	0.00	0.00	0.00
9,200.0	90.00	270.40	6,895.0	-2,207.00	300.3	-3,571.6	3,579.2	0.00	0.00	0.00
9,300.0	90.00	270.40	6,895.0	-2,207.00	301.0	-3,671.6	3,679.2	0.00	0.00	0.00
9,400.0	90.00	270.40	6,895.0	-2,207.00	301.7	-3,771.6	3,779.1	0.00	0.00	0.00
9,500.0	90.00	270.40	6,895.0	-2,207.00	302.4	-3,871.6	3,879.1	0.00	0.00	0.00
9,600.0	90.00	270.40	6,895.0	-2,207.00	303.1	-3,971.6	3,979.1	0.00	0.00	0.00
9,700.0	90.00	270.40	6,895.0	-2,207.00	303.8	-4,071.6	4,079.0	0.00	0.00	0.00
9,800.0	90.00	270.40	6,895.0	-2,207.00	304.5	-4,171.6	4,179.0	0.00	0.00	0.00
9,900.0	90.00	270.40	6,895.0	-2,207.00	305.2	-4,271.6	4,279.0	0.00	0.00	0.00
10,000.0	90.00	270.40	6,895.0	-2,207.00	305.9	-4,371.6	4,379.0	0.00	0.00	0.00
10,100.0	90.00	270.40	6,895.0	-2,207.00	306.6	-4,471.6	4,478.9	0.00	0.00	0.00
10,200.0	90.00	270.40	6,895.0	-2,207.00	307.3	-4,571.6	4,578.9	0.00	0.00	0.00
10,300.0	90.00	270.40	6,895.0	-2,207.00	308.0	-4,671.6	4,678.9	0.00	0.00	0.00
10,400.0	90.00	270.40	6,895.0	-2,207.00	308.7	-4,771.6	4,778.8	0.00	0.00	0.00
10,500.0	90.00	270.40	6,895.0	-2,207.00	309.4	-4,871.6	4,878.8	0.00	0.00	0.00
10,600.0	90.00	270.40	6,895.0	-2,207.00	310.1	-4,971.6	4,978.8	0.00	0.00	0.00
10,700.0	90.00	270.40	6,895.0	-2,207.00	310.8	-5,071.6	5,078.8	0.00	0.00	0.00
10,800.0	90.00	270.40	6,895.0	-2,207.00	311.5	-5,171.6	5,178.7	0.00	0.00	0.00
10,900.0	90.00	270.40	6,895.0	-2,207.00	312.2	-5,271.6	5,278.7	0.00	0.00	0.00
11,000.0	90.00	270.40	6,895.0	-2,207.00	312.9	-5,371.6	5,378.7	0.00	0.00	0.00
11,100.0	90.00	270.40	6,895.0	-2,207.00	313.6	-5,471.6	5,478.6	0.00	0.00	0.00
11,200.0	90.00	270.40	6,895.0	-2,207.00	314.3	-5,571.5	5,578.6	0.00	0.00	0.00
11,300.0	90.00	270.40	6,895.0	-2,207.00	315.0	-5,671.5	5,678.6	0.00	0.00	0.00
11,400.0	90.00	270.40	6,895.0	-2,207.00	315.8	-5,771.5	5,778.6	0.00	0.00	0.00
11,500.0	90.00	270.40	6,895.0	-2,207.00	316.5	-5,871.5	5,878.5	0.00	0.00	0.00
11,600.0	90.00	270.40	6,895.0	-2,207.00	317.2	-5,971.5	5,978.5	0.00	0.00	0.00
11,700.0	90.00	270.40	6,895.0	-2,207.00	317.9	-6,071.5	6,078.5	0.00	0.00	0.00
11,800.0	90.00	270.40	6,895.0	-2,207.00	318.6	-6,171.5	6,178.4	0.00	0.00	0.00
11,900.0	90.00	270.40	6,895.0	-2,207.00	319.3	-6,271.5	6,278.4	0.00	0.00	0.00
12,000.0	90.00	270.40	6,895.0	-2,207.00	320.0	-6,371.5	6,378.4	0.00	0.00	0.00
12,100.0	90.00	270.40	6,895.0	-2,207.00	320.7	-6,471.5	6,478.4	0.00	0.00	0.00
12,200.0	90.00	270.40	6,895.0	-2,207.00	321.4	-6,571.5	6,578.3	0.00	0.00	0.00
12,300.0	90.00	270.40	6,895.0	-2,207.00	322.1	-6,671.5	6,678.3	0.00	0.00	0.00
12,400.0	90.00	270.40	6,895.0	-2,207.00	322.8	-6,771.5	6,778.3	0.00	0.00	0.00
12,500.0	90.00	270.40	6,895.0	-2,207.00	323.5	-6,871.5	6,878.2	0.00	0.00	0.00
12,600.0	90.00	270.40	6,895.0	-2,207.00	324.2	-6,971.5	6,978.2	0.00	0.00	0.00
12,700.0	90.00	270.40	6,895.0	-2,207.00	324.9	-7,071.5	7,078.2	0.00	0.00	0.00
12,800.0	90.00	270.40	6,895.0	-2,207.00	325.6	-7,171.5	7,178.2	0.00	0.00	0.00
12,900.0	90.00	270.40	6,895.0	-2,207.00	326.3	-7,271.5	7,278.1	0.00	0.00	0.00
13,000.0	90.00	270.40	6,895.0	-2,207.00	327.0	-7,371.5	7,378.1	0.00	0.00	0.00
13,100.0	90.00	270.40	6,895.0	-2,207.00	327.7	-7,471.5	7,478.1	0.00	0.00	0.00
13,200.0	90.00	270.40	6,895.0	-2,207.00	328.4	-7,571.5	7,578.0	0.00	0.00	0.00
13,300.0	90.00	270.40	6,895.0	-2,207.00	329.1	-7,671.5	7,678.0	0.00	0.00	0.00
13,400.0	90.00	270.40	6,895.0	-2,207.00	329.8	-7,771.5	7,778.0	0.00	0.00	0.00
13,500.0	90.00	270.40	6,895.0	-2,207.00	330.5	-7,871.5	7,878.0	0.00	0.00	0.00
13,600.0	90.00	270.40	6,895.0	-2,207.00	331.2	-7,971.5	7,977.9	0.00	0.00	0.00
13,700.0	90.00	270.40	6,895.0	-2,207.00	331.9	-8,071.5	8,077.9	0.00	0.00	0.00
13,800.0	90.00	270.40	6,895.0	-2,207.00	332.7	-8,171.5	8,177.9	0.00	0.00	0.00
13,900.0	90.00	270.40	6,895.0	-2,207.00	333.4	-8,271.5	8,277.8	0.00	0.00	0.00
14,000.0	90.00	270.40	6,895.0	-2,207.00	334.1	-8,371.5	8,377.8	0.00	0.00	0.00
14,100.0	90.00	270.40	6,895.0	-2,207.00	334.8	-8,471.5	8,477.8	0.00	0.00	0.00
14,200.0	90.00	270.40	6,895.0	-2,207.00	335.5	-8,571.5	8,577.8	0.00	0.00	0.00

Planning Report



Database:	EDM 5000.1 Single User Db	Local Co-ordinate Reference:	Well GP-HILLSIDE 3-20-24
Company:	EXTRACTION OIL & GAS	TVD Reference:	KB-EST @ 4688.0usft (Original Well Elev)
Project:	WELD COUNTY, COLORADO (NAD 83)	MD Reference:	KB-EST @ 4688.0usft (Original Well Elev)
Site:	NE NE SEC. 20 T5N R65W 6th P.M.	North Reference:	True
Well:	GP-HILLSIDE 3-20-24	Survey Calculation Method:	Minimum Curvature
Wellbore:	ORIGINAL WELLBORE		
Design:	PROPOSAL #1		

Planned Survey

MD (usft)	Inc (°)	Azi (°)	TVD (usft)	SS (usft)	+N/-S (usft)	+E/-W (usft)	Vertical Section (usft)	Dogleg Rate (°/100usft)	Build Rate (°/100usft)	Turn Rate (°/100usft)
14,300.0	90.00	270.40	6,895.0	-2,207.00	336.2	-8,671.5	8,677.7	0.00	0.00	0.00
14,400.0	90.00	270.40	6,895.0	-2,207.00	336.9	-8,771.5	8,777.7	0.00	0.00	0.00
14,500.0	90.00	270.40	6,895.0	-2,207.00	337.6	-8,871.5	8,877.7	0.00	0.00	0.00
14,600.0	90.00	270.40	6,895.0	-2,207.00	338.3	-8,971.5	8,977.6	0.00	0.00	0.00
14,700.0	90.00	270.40	6,895.0	-2,207.00	339.0	-9,071.5	9,077.6	0.00	0.00	0.00
14,800.0	90.00	270.40	6,895.0	-2,207.00	339.7	-9,171.5	9,177.6	0.00	0.00	0.00
14,900.0	90.00	270.40	6,895.0	-2,207.00	340.4	-9,271.5	9,277.6	0.00	0.00	0.00
15,000.0	90.00	270.40	6,895.0	-2,207.00	341.1	-9,371.5	9,377.5	0.00	0.00	0.00
15,100.0	90.00	270.40	6,895.0	-2,207.00	341.8	-9,471.5	9,477.5	0.00	0.00	0.00
15,200.0	90.00	270.40	6,895.0	-2,207.00	342.5	-9,571.5	9,577.5	0.00	0.00	0.00
15,300.0	90.00	270.40	6,895.0	-2,207.00	343.2	-9,671.4	9,677.4	0.00	0.00	0.00
15,400.0	90.00	270.40	6,895.0	-2,207.00	343.9	-9,771.4	9,777.4	0.00	0.00	0.00
15,500.0	90.00	270.40	6,895.0	-2,207.00	344.6	-9,871.4	9,877.4	0.00	0.00	0.00
15,600.0	90.00	270.40	6,895.0	-2,207.00	345.3	-9,971.4	9,977.4	0.00	0.00	0.00
15,700.0	90.00	270.40	6,895.0	-2,207.00	346.0	-10,071.4	10,077.3	0.00	0.00	0.00
15,800.0	90.00	270.40	6,895.0	-2,207.00	346.7	-10,171.4	10,177.3	0.00	0.00	0.00
15,900.0	90.00	270.40	6,895.0	-2,207.00	347.4	-10,271.4	10,277.3	0.00	0.00	0.00
16,000.0	90.00	270.40	6,895.0	-2,207.00	348.1	-10,371.4	10,377.2	0.00	0.00	0.00
16,100.0	90.00	270.40	6,895.0	-2,207.00	348.8	-10,471.4	10,477.2	0.00	0.00	0.00
16,200.0	90.00	270.40	6,895.0	-2,207.00	349.6	-10,571.4	10,577.2	0.00	0.00	0.00
16,300.0	90.00	270.40	6,895.0	-2,207.00	350.3	-10,671.4	10,677.2	0.00	0.00	0.00
16,400.0	90.00	270.40	6,895.0	-2,207.00	351.0	-10,771.4	10,777.1	0.00	0.00	0.00
16,500.0	90.00	270.40	6,895.0	-2,207.00	351.7	-10,871.4	10,877.1	0.00	0.00	0.00
16,600.0	90.00	270.40	6,895.0	-2,207.00	352.4	-10,971.4	10,977.1	0.00	0.00	0.00
16,700.0	90.00	270.40	6,895.0	-2,207.00	353.1	-11,071.4	11,077.0	0.00	0.00	0.00
16,800.0	90.00	270.40	6,895.0	-2,207.00	353.8	-11,171.4	11,177.0	0.00	0.00	0.00
16,900.0	90.00	270.40	6,895.0	-2,207.00	354.5	-11,271.4	11,277.0	0.00	0.00	0.00
17,000.0	90.00	270.40	6,895.0	-2,207.00	355.2	-11,371.4	11,377.0	0.00	0.00	0.00
17,100.0	90.00	270.40	6,895.0	-2,207.00	355.9	-11,471.4	11,476.9	0.00	0.00	0.00
BHL - GP-HILLSIDE 3-20-24										
17,124.7	90.00	270.40	6,895.0	-2,207.00	356.1	-11,496.1	11,501.6	0.00	0.00	0.00

Formations

MD (usft)	TVD (usft)	Name	Lithology	Dip (°)	Dip Direction (°)
3,719.9	3,686.0	PARKMAN			
4,508.2	4,425.0	SUSSEX			
5,052.2	4,935.0	SHANNON			
7,009.6	6,740.0	SHARON SPRINGS			
7,063.7	6,775.0	NIOBRARA			

Database:	EDM 5000.1 Single User Db	Local Co-ordinate Reference:	Well GP-HILLSIDE 3-20-24
Company:	EXTRACTION OIL & GAS	TVD Reference:	KB-EST @ 4688.0usft (Original Well Elev)
Project:	WELD COUNTY, COLORADO (NAD 83)	MD Reference:	KB-EST @ 4688.0usft (Original Well Elev)
Site:	NE NE SEC. 20 T5N R65W 6th P.M.	North Reference:	True
Well:	GP-HILLSIDE 3-20-24	Survey Calculation Method:	Minimum Curvature
Wellbore:	ORIGINAL WELLBORE		
Design:	PROPOSAL #1		

Plan Annotations

MD (usft)	TVD (usft)	Local Coordinates		Comment
		+N/-S (usft)	+E/-W (usft)	
1,600.0	1,600.0	0.0	0.0	9 5/8" SURFACE CASING
2,500.0	2,500.0	0.0	0.0	START NUDGE (2°/100ft BUR)
3,518.3	3,497.0	35.4	-175.6	EOB TO 20.37° INC
6,741.5	6,518.7	257.4	-1,275.1	KOP (10°/100ft DGLG)
7,441.8	6,895.0	287.9	-1,813.4	HZ LANDING PNT - GP-HILLSIDE 3-20-24
17,124.7	6,895.0	356.1	-11,496.1	BHL - GP-HILLSIDE 3-20-24