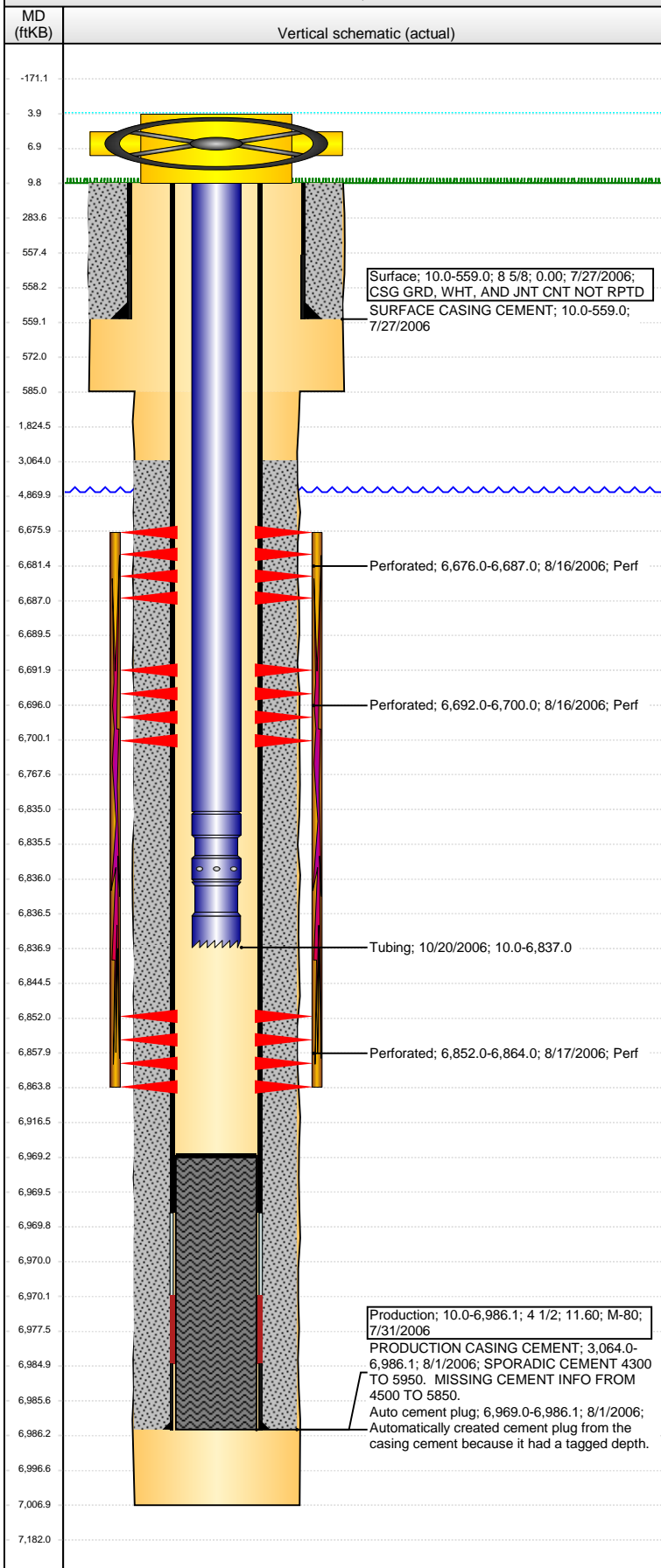


Well Name: MCKENNEY 14-12

VERTICAL - ORIGINAL HOLE, 7/6/2016 10:21:55 AM



Well Header			
API	Business Unit	District	Well Config
05-123-23763	DJ BASIN	15	VERTICAL
Original KB Elevation (ft)	KB - GL / MSL (ftKB)	Spud Date	P & A Date
4,700	10.00	7/27/2006	
Comment			
Directions To Well			
Congressional Location			
Quarter 1	Quarter 2	Quarter 3	Quarter 4
	NW	NW	NE
Section	Township	Twnshp N...	Range
14	6 N		64 W
Bottom Hole Location			
North-South Distance (ft)	From N or S Line	East-West Distance (ft)	From E or W Line
Plug Back Total Depths			
Date	Depth (ftKB)	Method	Com
8/1/2006	6,969.7	CASING TALLY	FLOAT SHOE W/ BAFFLE
8/15/2006	6,967.0	CASED HOLE LOG	DEPTH LOGGER ON CBL
10/20/2006	6,969.0	TAG	CLEAN OUT TO LAND TUBING
Wellbore Sections			
Section Des	Size (in)	Act Top, MD (ftKB)	Act Btm, MD (ftKB)
SURFACE	12 1/4	10	585
PRODUCTION	7 7/8	585	7,007
Zone Statuses			
Zone Name	Status Date	Status	Fluid Type
NIOBRARA	8/30/2006	PR	
CODELL	8/30/2006	PR	
Casing Strings			
Surface, 559.0ftKB			
Casing Description	Run Date	OD (in)	Wt/Len (l...)
Surface	7/27/2006	8 5/8	
Grade	Top, MD (ft...)	MD (ftKB)	
M-80	10.0	559.0	
Production, 6,986.1ftKB			
Casing Description	Run Date	OD (in)	Wt/Len (l...)
Production	7/31/2006	4 1/2	11.60
Grade	Top, MD (ft...)	MD (ftKB)	
M-80	10.0	6,986.1	
Cement			
Description	Top Depth (ftKB)	Bottom Depth (ftKB)	
SURFACE CASING CEMENT	10.0	559.0	
Description	Top Depth (ftKB)	Bottom Depth (ftKB)	
PRODUCTION CASING CEMENT	3,064.0	6,986.1	
Tubing Strings			
Tubing Description	Run Date	String...	ID (in)
Tubing	10/20/2006	2 3/8	
Wt (lb/ft)	Grade	Len (ft)	Set De...
6		6,827.00	
Tubing Components			
Item Des	OD (in)	Wt (lb/ft)	Grade
Tubing	2 3/8		
Seating Nipple	2 3/8	1.10	
Notched collar	2 3/8		
Perforation Data			
Zone	Bnch/St g	Entered Shot Total	Top (ftKB)
NIOBRARA, ORIGINAL HOLE	B	22	6,676.00
NIOBRARA, ORIGINAL HOLE	B	16	6,692.00
CODELL, ORIGINAL HOLE			6,852.00
Stimulations & Treatments			
Date	Zone	Primary Job Type	
8/18/2006	NIOBRARA-CODELL, ORIGINAL HOLE	DRILLING/COMPLETION - ORIGINAL	
Technical Result	Tech Result Details	Tech Result Note	
Comment			
LIMITED ENTRY FRAC			
Other In Hole			
Run Date	Des	OD (in)	Top (ftKB)
Logs			
Date	Type	Top, MD (ftKB)	Btm, MD (ftKB)
7/31/2006	COMPENSATED DENSITY	3,490.0	6,993.0

Well Name: MCKENNEY 14-12

VERTICAL - ORIGINAL HOLE, 7/6/2016 10:21:57 AM

Logs

Date	Type	Top, MD (ftKB)	Btm, MD (ftKB)
7/31/2006	INDUCTION	580.0	7,013.0
8/15/2006	CBL/CCL/GR	2,900.0	6,964.0
2/23/2015	GYRO	10.0	6,750.0

