

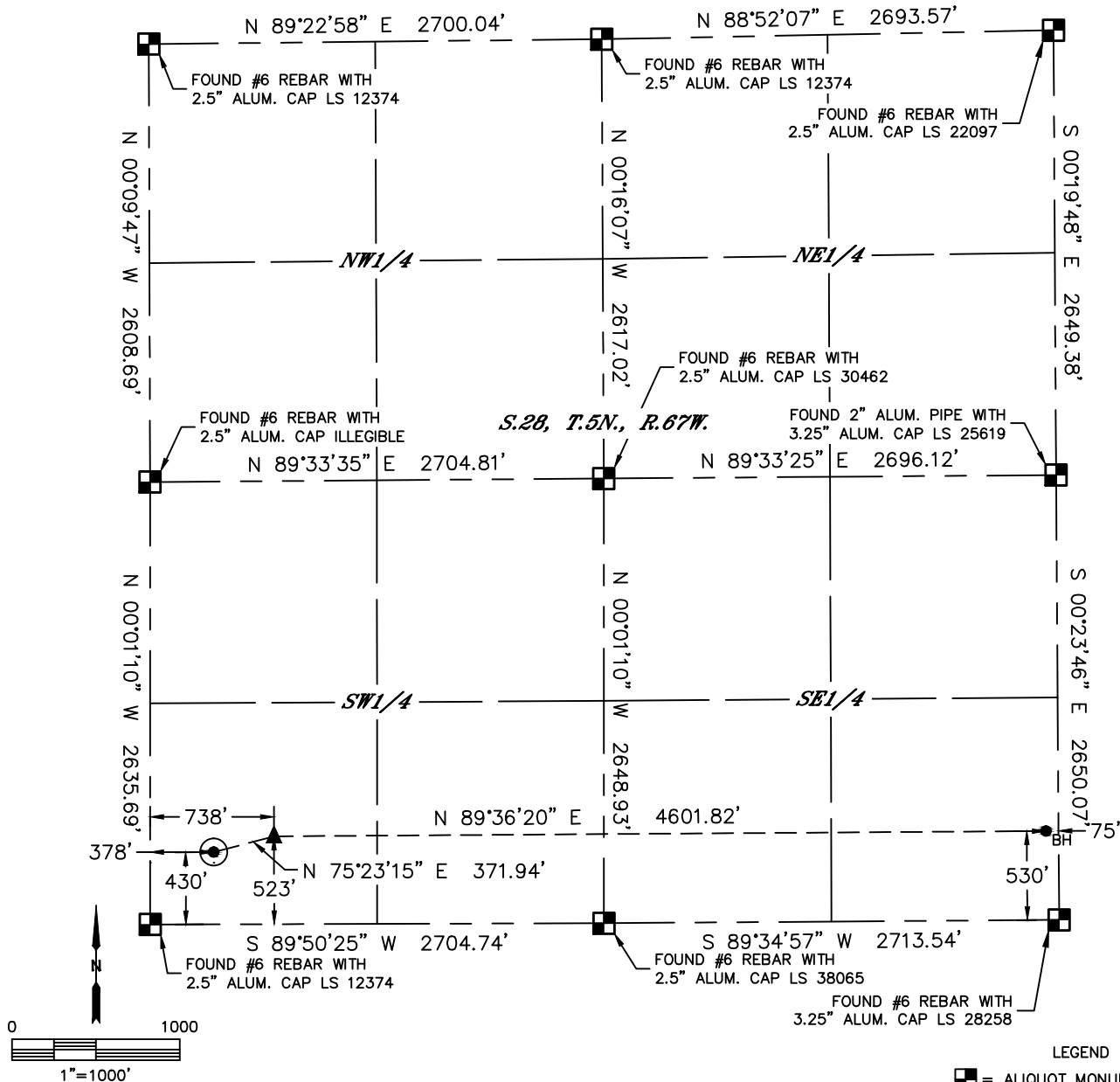


Lat40°, Inc. 6250 W. 10th Street, Unit 2, Greeley, CO 970-515-5294

WELL LOCATION CERTIFICATE

KINZER 281-312

SECTION: 28
TOWNSHIP: 5N
RANGE: 67W
6TH. P.M.
WELD COUNTY, CO



CLIENT: PDC ENERGY				LANDMAN: JEFF HINDMARSH			
INSTRUMENT OPERATOR: CHASE MILLER				SURVEY DATE: 12/1/2015			
SURFACE USE: CROP LAND				SURFACE USE: CROP LAND			
SHL FOOTAGE				SHL PDOP			
430	FSL	378	FWL	40.36461	-104.90624	2.1	4784
SHL LAT°				SHL LONG°			
40.36461				-104.90624			
SHL 1/4/1/4				SHL S-T-R			
SWSW				28-5-67			

BHL FOOTAGE				BHL S-T-R			
530	FSL	75	FEL	40.36486	-104.88844	28-5-67	40.36486
BHL LAT°				BHL LONG°			
40.36486				-104.88844			
BHL 1/4/1/4				BHL S-T-R			
SWSW				28-5-67			

- LEGEND
- = ALIQUOT MONUMENT AS DESCRIBED
 - = CALCULATED POSITION
 - = SURFACE HOLE LOCATION (SHL)
 - ▲ = ENTRY POINT LOCATION (EP)
 - BH = BOTTOM HOLE LOCATION (BHL)
 - ⊕ = EXISTING WELL
 - ⊙ = ABANDONED WELL

NOTE:

- Bearings shown are Grid Bearings of the Colorado State Plane Coordinate System, North Zone, North American Datum 1983. The lineal dimensions as contained herein are based upon the "U.S. Survey Foot."
- Distances to section lines measured at 90 degrees from said section lines.
- Ground elevations are based on an observed GPS elevation (NAVD 1988 DATUM).
- Latitude and Longitude shown are (NAD 83 DATUM).
- IMPROVEMENTS: See LOCATION DRAWING for all visible improvements within 500' of oil and gas location.
- This map does not represent a boundary survey.

NEAREST CULTURAL ITEMS	
BUILDING	±1038' SE
BUILDING UNIT	±1257' SE
HIGH OCCUPANCY BUILDING UNIT	5280'±
DESIGNATED OUTSIDE ACTIVITY AREA	5280'±
PUBLIC ROAD (COUNTY ROAD 17)	±366' W
ABOVE GROUND UTILITY	±403' S
RAILROAD	±1338' NE
PROPERTY LINE	±378' W



Brian T. Brinkman—On behalf of Lat40°, Inc.
Colorado Licensed Professional Land Surveyor No. 38175
DATE: 4/8/2016
PROJECT#: 2015112