



June 1, 2016

VIA ELECTRONIC TRANSMITTAL

Director Matt Lepore
Colorado Oil and Gas Conservation Commission
1120 Lincoln Street Suite 801
Denver, Colorado 80203

RE: Rule 318.A.e.

Vetting 15
Vetting 16
Vetting 17
Vetting 18
Vetting 19
Vetting 20
Vetting 21
Vetting 22

Surface Location: SWNW, Section 15, Township 5 North, Range 65 West, Weld County, CO

Dear Mr. Lepore,

Extraction Oil and Gas is planning to drill the captioned horizontal wells in accordance with the provision of COGCC Rule 318A.e.

The proposed wellbore spacing unit consists of:
Section 17-5N-66W: E/2 SW/4, SE/4
Section 16-5N-66W: S/2

The spacing unit is an 560-acre wellbore spacing unit for the Niobrara and Codell formations.

Extraction Oil and Gas hereby certifies to the Director that all Owners within the proposed spacing unit above were notified and 30 days have passed without objection.

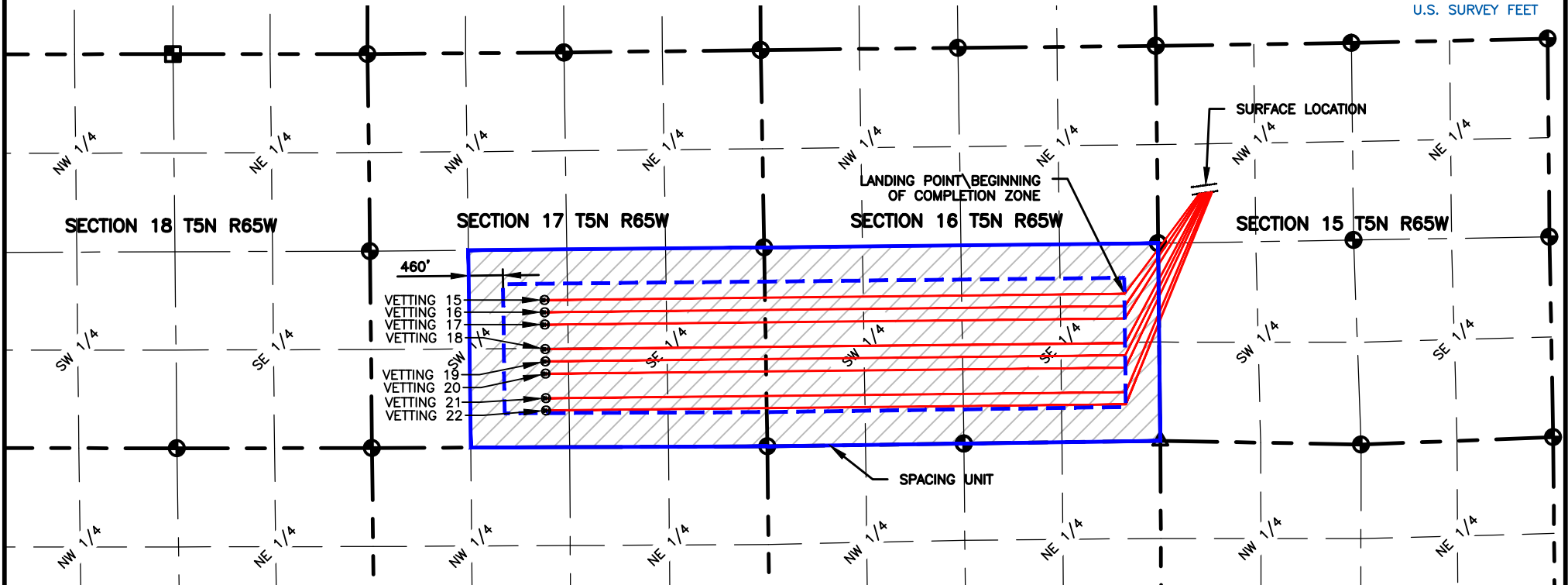
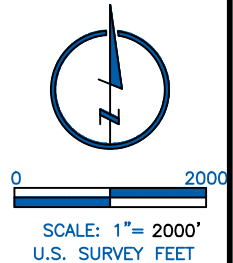
If you have any questions or issues regarding this permit, please contact the undersigned at 720-481-2379.

Respectfully,

Alyssa Andrews
Regulatory Analyst
Extraction Oil and Gas

NAME: VETTING CENTRAL
SPACING UNIT: E/2 SW/4 & SE/4 SEC 17, S/2 SEC 16, T5N, 65W UNIT ACREAGE: 560

WELL NAME	SURFACE LOCATION				LANDING POINT\BEGIN HORIZONTAL COMPLETION ZONE				BOTTOM HOLE\END HORIZONTAL COMPLETION ZONE				COMPLETION ZONE BEARING	COMPLETION ZONE LENGTH
	DIST.	DIR.	DIST.	DIR.	DIST.	DIR.	DIST.	DIR.	DIST.	DIR.	DIST.	DIR.		
VETTING 15	1994'	FNL	568'	FWL	1980'	FSL	460'	FEL	1980'	FSL	2340'	FWL	S89°24'14"W	7801.39
VETTING 16	1991'	FNL	591'	FWL	1815'	FSL	460'	FEL	1815'	FSL	2341'	FWL	S89°24'14"W	7800.82
VETTING 17	1988'	FNL	615'	FWL	1650'	FSL	460'	FEL	1650'	FSL	2341'	FWL	S89°24'14"W	7800.24
VETTING 18	1985'	FNL	639'	FWL	1320'	FSL	460'	FEL	1320'	FSL	2343'	FWL	S89°24'14"W	7799.09
VETTING 19	1982'	FNL	663'	FWL	1155'	FSL	460'	FEL	1155'	FSL	2343'	FWL	S89°24'14"W	7798.52
VETTING 20	1979'	FNL	687'	FWL	990'	FSL	460'	FEL	990'	FSL	2344'	FWL	S89°24'14"W	7797.94'
VETTING 21	1975'	FNL	710'	FWL	660'	FSL	460'	FEL	660'	FSL	2345'	FWL	S89°24'14"W	7796.79'
VETTING 22	1972'	FNL	734'	FWL	495'	FSL	460'	FEL	495'	FSL	2346'	FWL	S89°24'14"W	7796.21'



LAMP RYNEARSON
& ASSOCIATES

4715 Innovation Drive 970.226.0342 | P
 Fort Collins, CO 80525 970.226.0879 | F
www.LRA-Inc.com

PLANNED SPACING UNIT EXHIBIT
 VETTING 15-H
 VETTING CENTRAL SPACING UNIT

LEGEND

- ⊕ ALIQUOT CORNER
- ⊕⊕ BOTTOM HOLE
- △ COMPUTED ALIQUOT CORNER FROM MONUMENT ACCESSORIES
- ⊞ COMPUTED FROM GLO RECORDS
- SECTION LINE
- - - SIXTEENTH LINE
- - - QUARTER SECTION LINE

DRAWN BY KJW	DATE 10/30/15	COGCC ID	PROJECT - TASK NUMBER 0215036.00	BOOK AND PAGE MRI-04 PG-6
------------------------	-------------------------	-----------------	--	-------------------------------------

SURFACE - LOCATION
 SW /4, NW /4, SEC 15 T5N
 R65W

P:_Engineering\0215036 Vetting 15 H\DRAWINGS\EXHIBITS\0215036PSU-Vetting-C.dwg