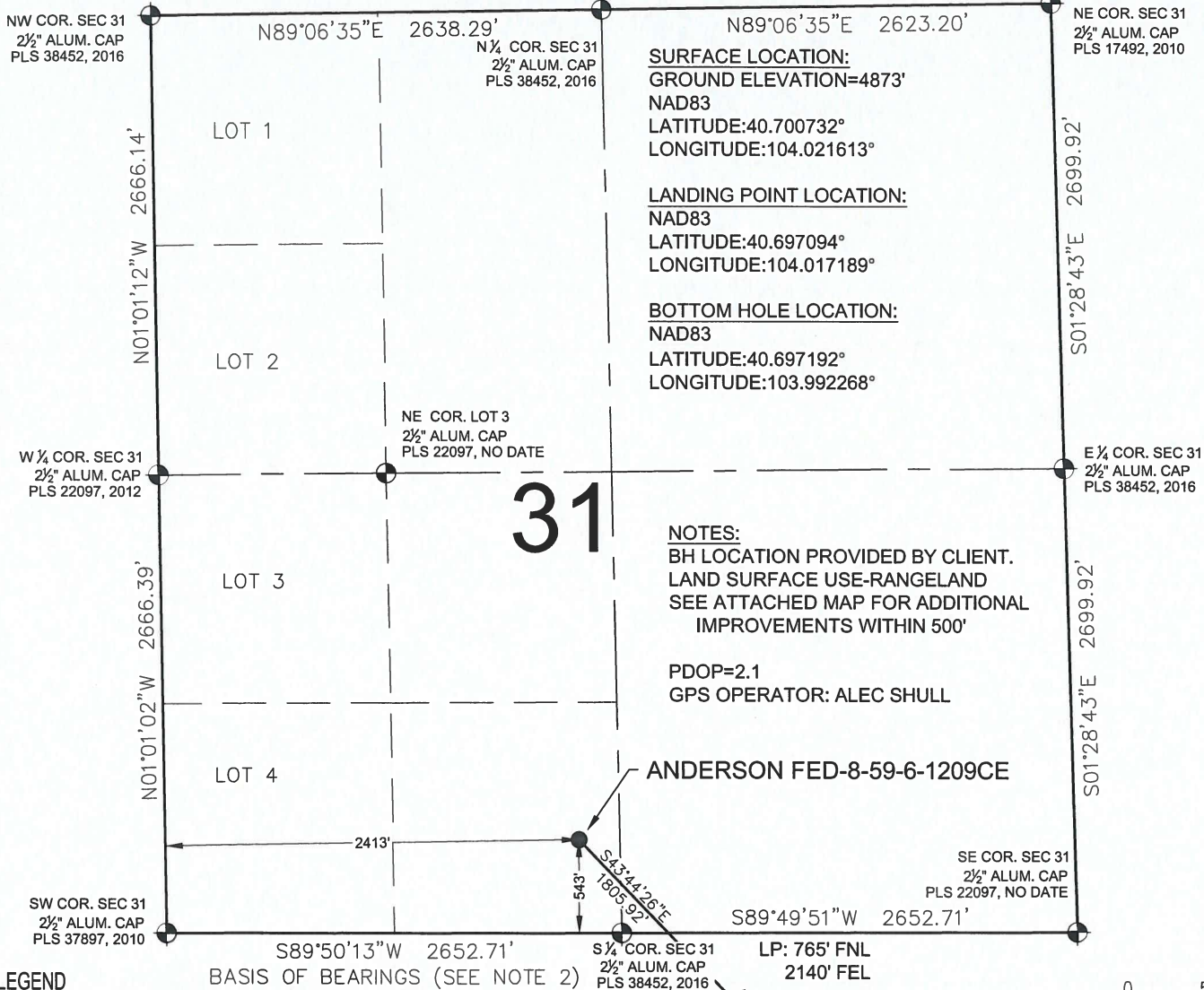


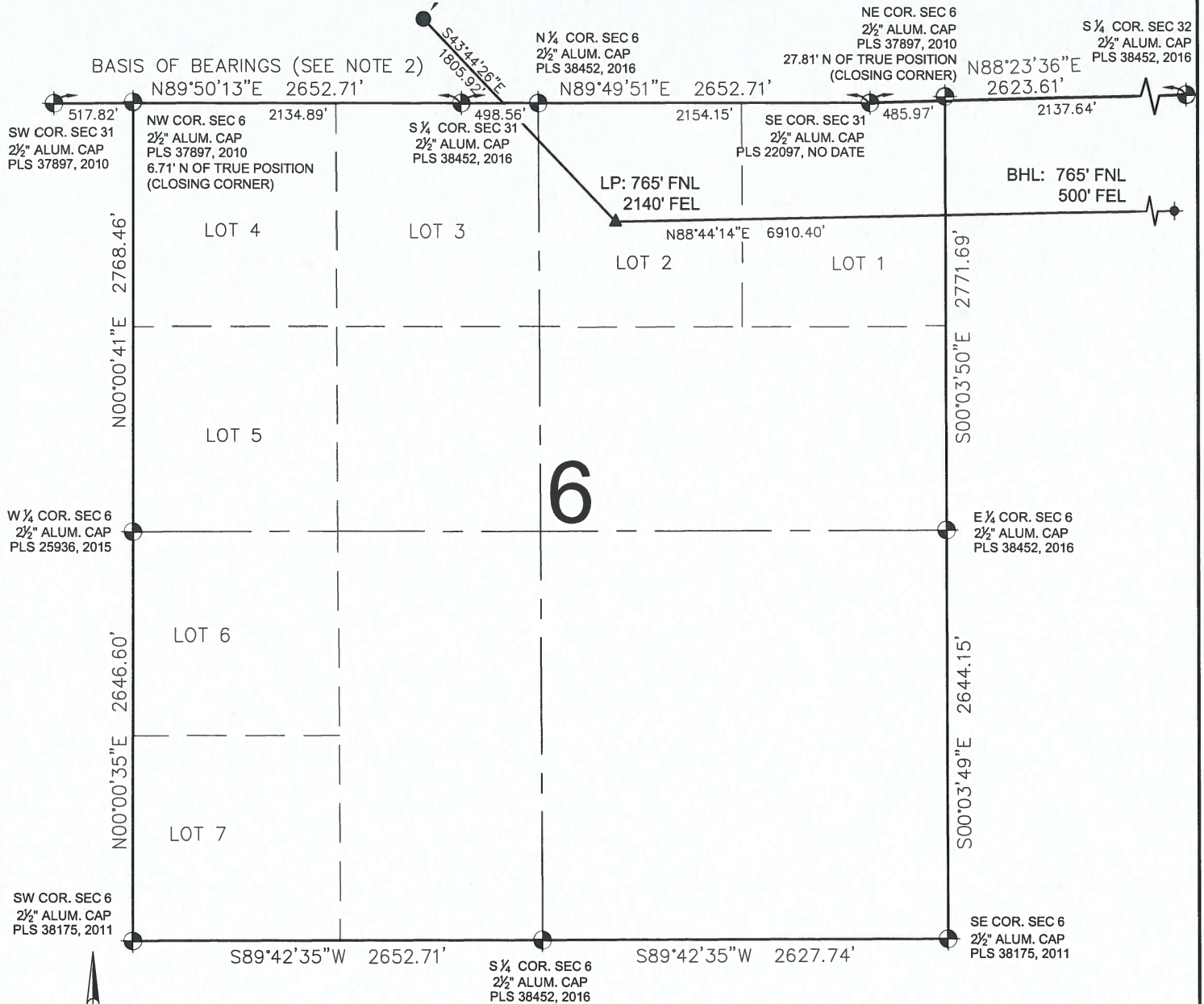
ANDERSON FED-8-59-6-1209CE WELL LOCATION CERTIFICATE



SHEET 1 OF 3

PREPARED BY: Petroleum Field Services, LLC 7535 Hilltop Circle Denver, CO 80221	FIELD DATE: 02-24-16	WELL NAME: ANDERSON FED-8-59-6-1209CE	PREPARED FOR: Crescent Point ENERGY CORP
	DRAWING DATE: 04-19-16	SURFACE LOCATION: SE1/4 SW1/4 SEC. 31, T9N, R59W, 6TH P.M. WELD COUNTY, COLORADO	
BY: KAD	CHECKED BY: MLP		

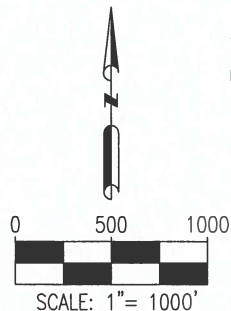
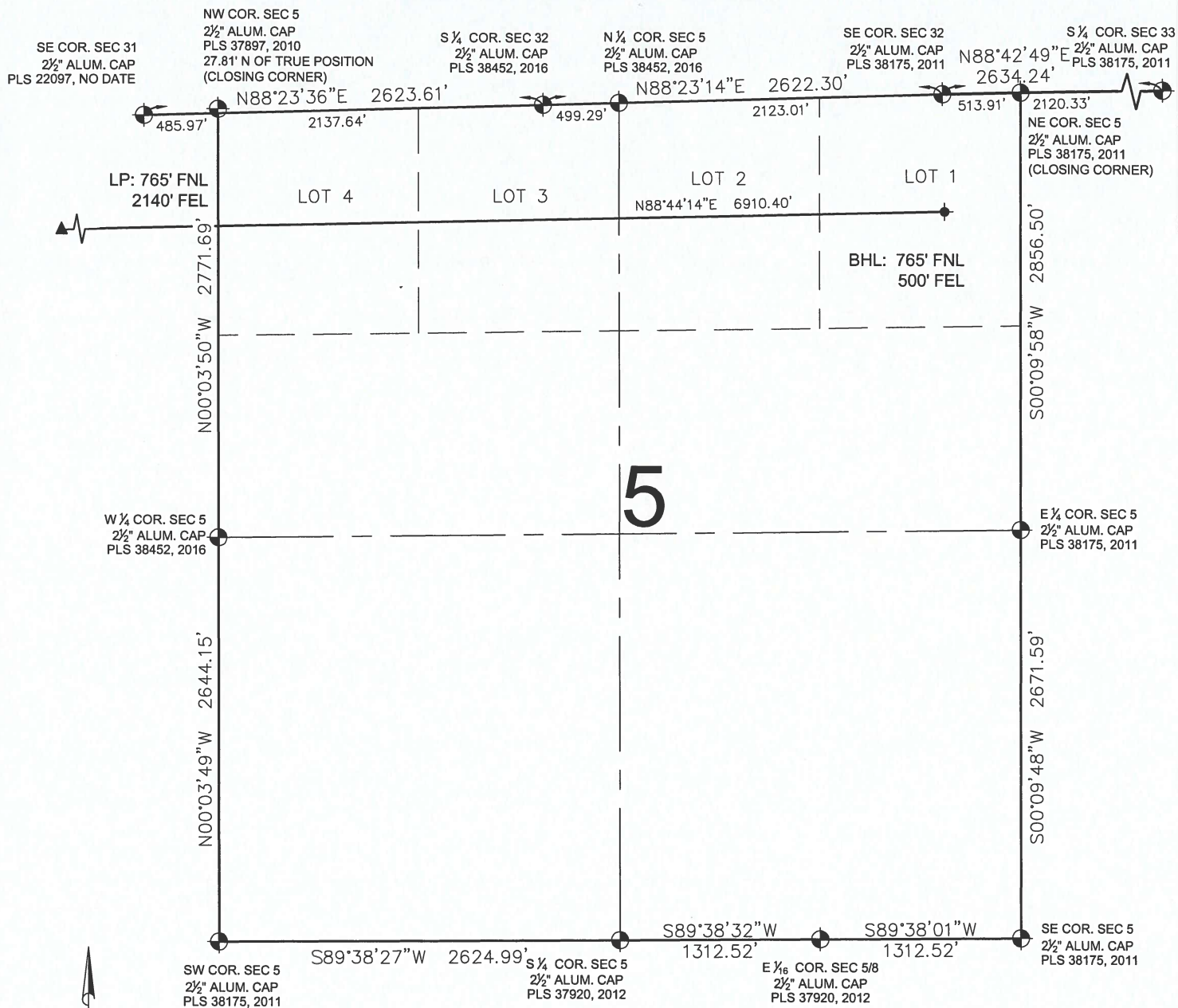
ANDERSON FED-8-59-6-1209CE WELL LOCATION CERTIFICATE



SHEET 2 OF 3

PREPARED BY: Petroleum Field Services, LLC 7535 Hilltop Circle Denver, CO 80221	FIELD DATE: 02-24-16	WELL NAME: ANDERSON FED-8-59-6-1209CE	PREPARED FOR: Crescent Point ENERGY CORP
	DRAWING DATE: 04-19-16	SURFACE LOCATION: SE1/4 SW1/4 SEC. 31, T9N, R59W, 6TH P.M. WELD COUNTY, COLORADO	
BY: KAD	CHECKED BY: MLP		

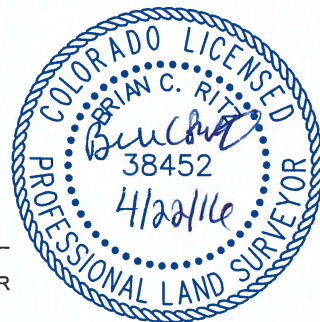
ANDERSON FED-8-59-6-1209CE WELL LOCATION CERTIFICATE



LEGEND

- = EXISTING MONUMENT
- = CALCULATED POSITION
- = PROPOSED WELL
- ◆ = EXISTING WELL
- ⬮ = BOTTOM HOLE
- ▲ = LANDING POINT
- LP = LANDING POINT
- BHL = BOTTOM HOLE LOCATION

BRIAN C. RITZ, PLS 38452
COLORADO LICENSED PROFESSIONAL LAND SURVEYOR
FOR AND ON BEHALF OF P.F.S., LLC



SHEET 3 OF 3

PREPARED BY:



FIELD DATE:

02-24-16

DRAWING DATE:

04-19-16

BY:

KAD

CHECKED BY:

MLP

WELL NAME:

ANDERSON FED-8-59-6-1209CE

SURFACE LOCATION:

SE1/4 SW1/4 SEC. 31, T9N, R59W, 6TH P.M.
WELD COUNTY, COLORADO

PREPARED FOR:

