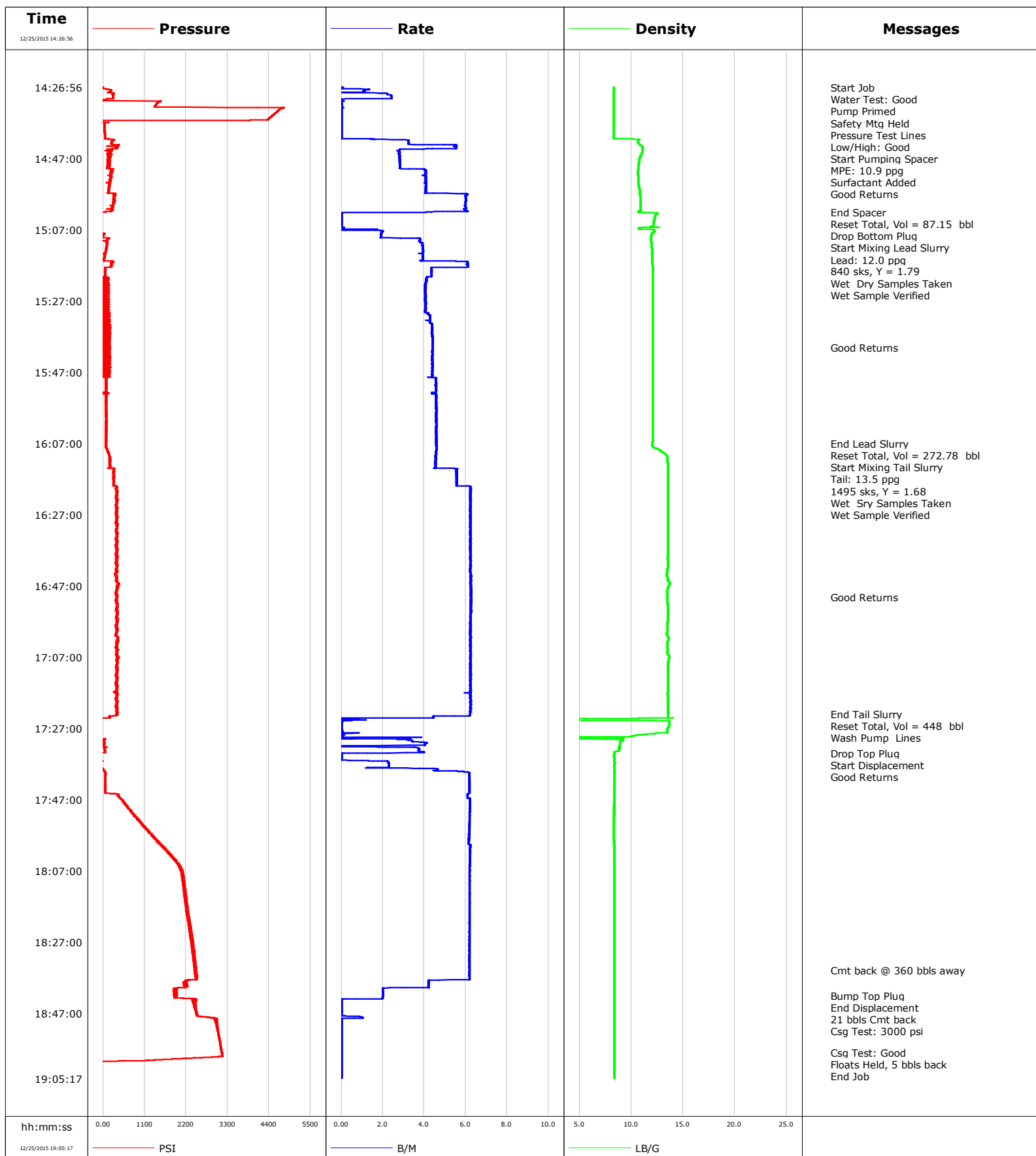


Well Wilson Ranch 32N-S27HZ
Field Wattenberg
Engineer Matlock/Reedy
Country United States

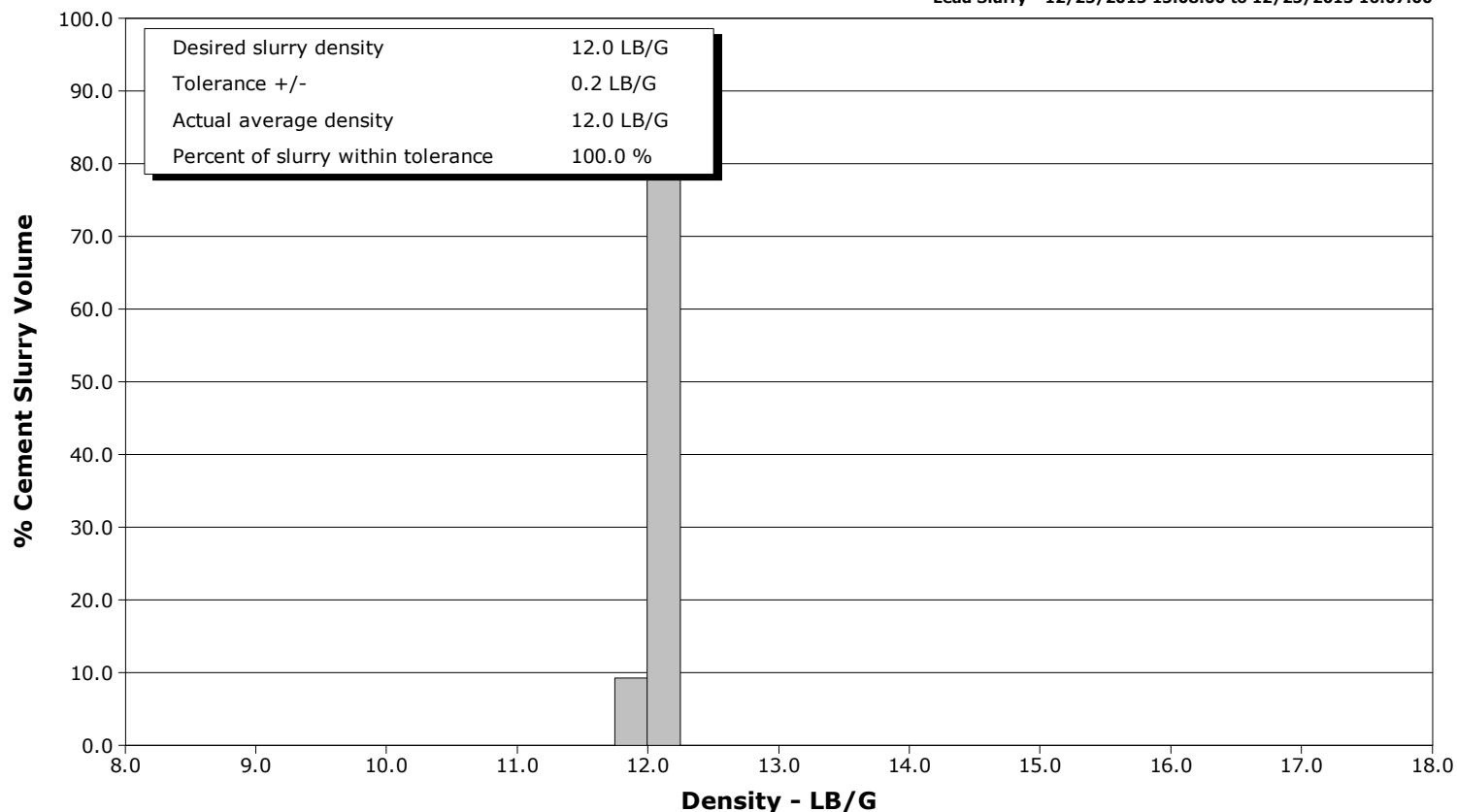
Client Anadarko
SIR No. DAXH-00577
Job Type Production
Job Date 12-25-2015



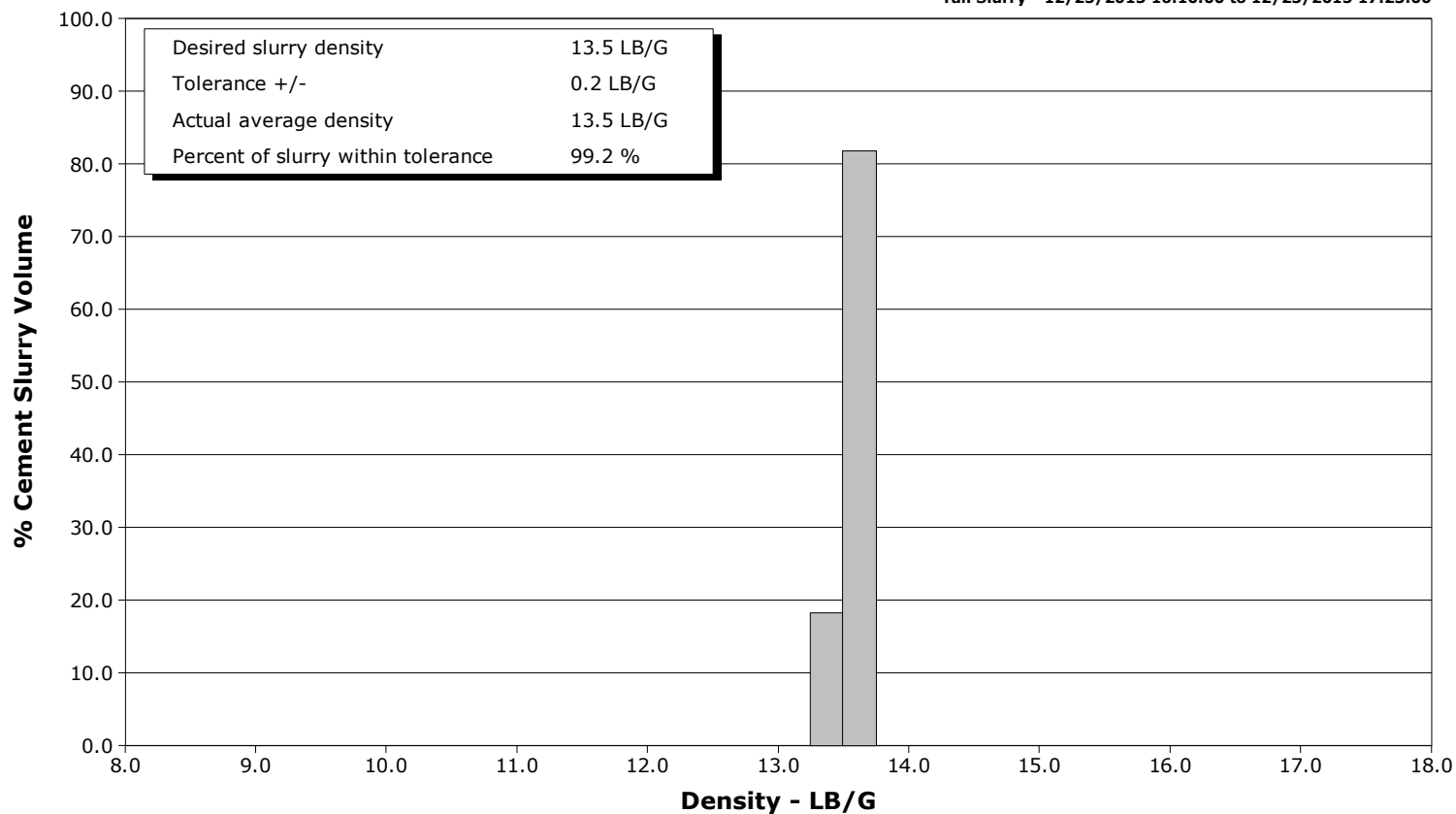
Well Wilson Ranch 32N-S27HZ
Field Wattenberg
Engineer Matlock/Reedy
Country United States

Client Anadarko
SIR No. DAXH-00577
Job Type Production
Job Date 12-25-2015

Lead Slurry - 12/25/2015 15:08:00 to 12/25/2015 16:07:00



Tail Slurry - 12/25/2015 16:10:00 to 12/25/2015 17:23:00



Cementing Service Report

					Customer Anadarko			Job Number DAXH-00577				
Well Wilson Ranch 32N-S27HZ			Location (legal)			Schlumberger Location Cheyenne		Job Start Dec/24/2015				
Field Wattenberg		Formation Name/Type			Deviation deg	Bit Size 8.5 in		Well MD 16495.0 ft	Well TVD 7251.0 ft			
County Weld		State/Province CO			BHP psi	BHST 234 degF	BHCT 230 degF	Pore Press. Gradient lb/gal				
Well Master 0631630647		API/UWI 05123413120000										
Rig Name Precision 460	Drilled For Oil		Service Via Land		Casing/ Liner							
					Depth, ft	Size, in	Weight, lb/ft	Grade	Thread			
Offshore Zone	Well Class New		Well Type Development		16495.0	5.5	17.0	P-110				
					0.0	0.0	0.0					
Drilling Fluid Type		Max. Density lb/gal	Plastic Viscosity cP		Tubing/Drill Pipe							
					T/D	Depth, ft	Size, in	Weight, lb/ft	Grade			
Service Line Cementing	Job Type Production											
Max. Allowed Tub. Press psi		Max. Allowed Ann. Press psi		WH Connection Double Cement head		Perforations/Open Hole						
					Top, ft	Bottom, ft	shot/ft	No. of Shots	Total Interval			
Service Instructions 9 5/8" 36# Previous Casing: 1,850' 8 1/2" to TD // OH Excess: 4% Top of Lead Cement: Surface Top of Tail Cement: 6,000' TD: 16,495' (7251') Shoe Joint: 93'					ft	ft			ft			
					ft	ft			Diameter			
					ft	ft			in			
					Treat Down Casing		Displacement 381.0 bbl		Packer Type		Packer Depth ft	
					Tubing Vol. bbl		Casing Vol. bbl		Annular Vol. bbl		Openhole Vol. bbl	
Casing/Tubing Secured <input checked="" type="checkbox"/>		1 Hole Vol. Circulated prior to Cement <input checked="" type="checkbox"/>			Casing Tools		Squeeze Job					
Lift Pressure psi				Shoe Type Float		Squeeze Type						
Pipe Rotated <input type="checkbox"/>		Pipe Reciprocated <input type="checkbox"/>			Shoe Depth 16495.0 ft		Tool Type					
No. Centralizers		Top Plugs 1	Bottom Plugs 1	Stage Tool Type		Tool Depth ft						
Cement Head Type Double				Stage Tool Depth ft		Tail Pipe Size in						
Job Scheduled For Dec/24/2015 20:00		Arrived on Location Dec/24/2015 20:00		Leave Location Dec/25/2015 20:00		Collar Type Float		Tail Pipe Depth ft				
						Collar Depth 16405.0 ft		Sqz. Total Vol. bbl				
Date	Time 24-hr clock	Treating Pressure PSI	Flow Rate B/M	Density LB/G	Volume BBL	Solid Fraction NULL	Message					
12/25/2015	14:26:56	-8	0.2	8.35	0.0	0	Start Job					
12/25/2015	14:26:57	-7	0.1	8.35	0.0	0	Water Test: Good					
12/25/2015	14:26:58	-9	0.0	8.35	0.0	0	Pump Primed					
12/25/2015	14:27:02	-9	0.0	8.35	0.0	0	Safety Mtg Held					
12/25/2015	14:27:46	212	1.1	8.35	0.4	0						
12/25/2015	14:28:36	243	1.6	8.35	1.2	0						
12/25/2015	14:29:26	267	2.4	8.35	3.0	0						
12/25/2015	14:30:16	112	0.3	8.35	5.0	0						
12/25/2015	14:31:00	1511	0.0	8.35	5.0	0	Pressure Test Lines					
12/25/2015	14:31:06	1484	0.0	8.34	5.0	0						
12/25/2015	14:31:56	1398	0.0	8.34	5.0	0						
12/25/2015	14:32:46	4783	0.0	8.35	5.0	0						
12/25/2015	14:33:36	4639	0.0	8.34	5.0	0						
12/25/2015	14:34:26	4547	0.0	8.34	5.0	0						
12/25/2015	14:35:16	4456	0.0	8.34	5.0	0						
12/25/2015	14:36:00	4374	0.0	8.34	5.0	0	Low/High: Good					
12/25/2015	14:36:06	4365	0.0	8.34	5.0	0						
12/25/2015	14:36:56	33	0.0	8.34	5.0	0						
12/25/2015	14:37:46	33	0.0	8.34	5.0	0						
12/25/2015	14:38:36	39	0.0	8.34	5.0	0						
12/25/2015	14:39:26	39	0.0	8.35	5.0	0						

Well Wilson Ranch 32N-S27HZ			Field Wattenberg		Job Start Dec/24/2015	Customer Anadarko		Job Number DAXH-00577
Date	Time 24-hr clock	Treating Pressure PSI	Flow Rate B/M	Density LB/G	Volume BBL	Solid Fraction NULL	Message	
12/25/2015	14:41:00	41	0.0	8.35	0.0	0	Start Pumping Spacer	
12/25/2015	14:41:06	41	0.0	8.35	0.0	0		
12/25/2015	14:41:56	264	3.2	10.68	1.1	0		
12/25/2015	14:42:46	231	3.2	10.71	3.8	0		
12/25/2015	14:43:36	373	5.4	11.06	7.7	0		
12/25/2015	14:44:26	203	2.8	11.09	12.0	0		
12/25/2015	14:45:00	149	2.8	11.09	13.6	0	MPE: 10.9 ppg	
12/25/2015	14:45:16	143	2.8	11.06	14.3	0		
12/25/2015	14:46:00	182	2.8	10.93	16.4	0	Surfactant Added	
12/25/2015	14:46:06	136	2.8	10.92	16.6	0		
12/25/2015	14:46:56	167	2.8	10.80	19.0	0		
12/25/2015	14:47:00	144	2.8	10.79	19.2	0	Good Returns	
12/25/2015	14:47:46	176	2.8	10.77	21.3	0		
12/25/2015	14:48:36	107	2.8	10.72	23.7	0		
12/25/2015	14:49:26	144	2.8	10.68	26.0	0		
12/25/2015	14:50:16	221	4.1	10.65	28.8	0		
12/25/2015	14:51:06	219	4.1	10.65	32.2	0		
12/25/2015	14:51:56	210	4.1	10.66	35.6	0		
12/25/2015	14:52:46	210	4.1	10.67	39.0	0		
12/25/2015	14:53:36	199	4.1	10.68	42.4	0		
12/25/2015	14:54:26	177	4.1	10.73	45.8	0		
12/25/2015	14:55:16	146	4.1	10.77	49.2	0		
12/25/2015	14:56:06	150	4.1	10.81	52.6	0		
12/25/2015	14:56:56	328	6.1	10.82	56.2	0		
12/25/2015	14:57:46	285	6.0	10.87	61.2	0		
12/25/2015	14:58:36	286	6.0	10.91	66.2	0		
12/25/2015	14:59:26	285	6.0	10.92	71.2	0		
12/25/2015	15:00:16	271	6.0	10.91	76.2	0		
12/25/2015	15:01:06	223	6.0	10.92	81.2	0		
12/25/2015	15:01:56	68	4.6	10.80	86.2	0		
12/25/2015	15:02:00	56	4.3	10.72	86.5	0	End Spacer	
12/25/2015	15:02:16	-111	0.0	12.53	87.2	0	Reset Total, Vol = 87.15 bbl	
12/25/2015	15:02:46	-120	0.0	12.37	0.0	0		
12/25/2015	15:03:36	-123	0.0	12.25	0.0	0		
12/25/2015	15:04:00	-123	0.0	12.22	0.0	0	Drop Bottom Plug	
12/25/2015	15:04:26	-123	0.0	12.20	0.0	0		
12/25/2015	15:05:16	-124	0.0	12.17	0.0	0		
12/25/2015	15:06:06	-123	0.0	11.85	0.0	0		
12/25/2015	15:06:56	-81	0.3	12.08	0.2	0		
12/25/2015	15:07:46	-64	1.9	12.14	1.4	0		
12/25/2015	15:08:00	25	1.9	11.97	1.9	0	Start Mixing Lead Slurry	
12/25/2015	15:08:36	-12	1.9	11.95	3.0	0		
12/25/2015	15:09:26	163	3.8	11.92	4.8	0		
12/25/2015	15:10:00	117	3.8	11.92	7.0	0	Lead: 12.0 ppg	
12/25/2015	15:10:16	101	3.8	11.93	8.0	0		
12/25/2015	15:11:00	106	3.9	11.96	10.8	0	840 sks, Y = 1.79	
12/25/2015	15:11:06	106	3.9	11.96	11.2	0		
12/25/2015	15:11:56	89	3.9	11.98	14.4	0		
12/25/2015	15:12:00	90	3.9	11.98	14.7	0	Wet Dry Samples Taken	
12/25/2015	15:12:46	76	3.9	11.99	17.7	0		
12/25/2015	15:13:00	72	3.9	12.00	18.6	0	Wet Sample Verified	
12/25/2015	15:13:36	60	3.9	11.99	21.0	0		
12/25/2015	15:14:26	39	3.9	12.00	24.3	0		
12/25/2015	15:15:16	21	3.9	12.00	27.5	0		

Well			Field		Job Start		Customer		Job Number	
Wilson Ranch 32N-S27HZ			Wattenberg		Dec/24/2015		Anadarko		DAXH-00577	
Date	Time 24-hr clock	Treating Pressure PSI	Flow Rate B/M	Density LB/G	Volume BBL	Solid Fraction NULL	Message			
12/25/2015	15:16:56	238	6.1	12.03	36.5	0				
12/25/2015	15:17:46	68	4.3	12.04	41.2	0				
12/25/2015	15:18:36	53	4.4	12.05	44.8	0				
12/25/2015	15:19:26	57	4.4	12.05	48.4	0				
12/25/2015	15:20:16	-30	4.1	12.05	52.0	0				
12/25/2015	15:21:06	-8	4.1	12.05	55.5	0				
12/25/2015	15:21:56	2	4.1	12.05	58.9	0				
12/25/2015	15:22:46	112	4.0	12.06	62.3	0				
12/25/2015	15:23:36	31	4.0	12.06	65.6	0				
12/25/2015	15:24:26	66	4.1	12.05	69.0	0				
12/25/2015	15:25:16	31	4.1	12.05	72.4	0				
12/25/2015	15:26:06	13	4.0	12.05	75.8	0				
12/25/2015	15:26:56	104	4.0	12.05	79.2	0				
12/25/2015	15:27:46	-9	4.1	12.05	82.5	0				
12/25/2015	15:28:36	-8	4.1	12.05	85.9	0				
12/25/2015	15:29:26	-1	4.1	12.05	89.3	0				
12/25/2015	15:30:16	181	4.1	12.05	92.7	0				
12/25/2015	15:31:06	92	4.3	12.05	96.2	0				
12/25/2015	15:31:56	121	4.3	12.05	99.7	0				
12/25/2015	15:32:46	172	4.3	12.05	103.3	0				
12/25/2015	15:33:36	23	4.4	12.05	106.9	0				
12/25/2015	15:34:26	197	4.4	12.05	110.5	0				
12/25/2015	15:35:16	29	4.4	12.04	114.2	0				
12/25/2015	15:36:06	16	4.4	12.04	117.8	0				
12/25/2015	15:36:56	132	4.4	12.05	121.5	0				
12/25/2015	15:37:46	54	4.4	12.05	125.2	0				
12/25/2015	15:38:36	134	4.4	12.05	128.8	0				
12/25/2015	15:39:26	187	4.4	12.05	132.5	0				
12/25/2015	15:40:00	115	4.4	12.05	135.0	0	Good Returns			
12/25/2015	15:40:16	67	4.4	12.05	136.2	0				
12/25/2015	15:41:06	158	4.4	12.05	139.8	0				
12/25/2015	15:41:56	27	4.4	12.05	143.5	0				
12/25/2015	15:42:46	86	4.4	12.05	147.2	0				
12/25/2015	15:43:36	178	4.4	12.05	150.8	0				
12/25/2015	15:44:26	41	4.4	12.05	154.5	0				
12/25/2015	15:45:16	108	4.4	12.05	158.1	0				
12/25/2015	15:46:06	18	4.4	12.05	161.8	0				
12/25/2015	15:46:56	33	4.4	12.04	165.5	0				
12/25/2015	15:47:46	128	4.4	12.04	169.1	0				
12/25/2015	15:48:36	84	4.6	12.05	172.8	0				
12/25/2015	15:49:26	93	4.6	12.05	176.6	0				
12/25/2015	15:50:16	80	4.6	12.05	180.4	0				
12/25/2015	15:51:06	85	4.6	12.05	184.2	0				
12/25/2015	15:51:56	78	4.6	12.05	188.0	0				
12/25/2015	15:52:46	39	4.4	12.05	191.8	0				
12/25/2015	15:53:36	81	4.6	12.05	195.5	0				
12/25/2015	15:54:26	78	4.6	12.05	199.3	0				
12/25/2015	15:55:16	76	4.6	12.05	203.2	0				
12/25/2015	15:56:06	76	4.6	12.05	207.0	0				
12/25/2015	15:56:56	76	4.6	12.04	210.8	0				
12/25/2015	15:57:46	80	4.6	12.05	214.6	0				
12/25/2015	15:58:36	81	4.6	12.05	218.4	0				
12/25/2015	15:59:26	78	4.6	12.06	222.2	0				
12/25/2015	16:00:16	82	4.6	12.05	226.1	0				

Well Wilson Ranch 32N-S27HZ			Field Wattenberg		Job Start Dec/24/2015	Customer Anadarko	Job Number DAXH-00577
Date	Time 24-hr clock	Treating Pressure PSI	Flow Rate B/M	Density LB/G	Volume BBL	Solid Fraction NULL	Message
12/25/2015	16:01:56	87	4.6	12.05	233.7	0	
12/25/2015	16:02:46	76	4.6	12.05	237.5	0	
12/25/2015	16:03:36	82	4.6	12.05	241.3	0	
12/25/2015	16:04:26	83	4.6	12.04	245.1	0	
12/25/2015	16:05:16	81	4.6	12.05	249.0	0	
12/25/2015	16:06:06	78	4.6	12.04	252.8	0	
12/25/2015	16:06:56	72	4.6	12.01	256.6	0	
12/25/2015	16:07:00	72	4.6	12.01	256.9	0	End Lead Slurry
12/25/2015	16:07:46	72	4.6	12.01	260.4	0	
12/25/2015	16:08:00	80	4.6	12.10	261.5	0	Reset Total, Vol = 272.78 bbl
12/25/2015	16:08:36	107	4.6	12.59	264.2	0	
12/25/2015	16:09:26	129	4.6	12.99	268.1	0	
12/25/2015	16:10:00	157	4.6	13.28	270.7	0	Start Mixing Tail Slurry
12/25/2015	16:10:16	160	4.6	13.37	271.9	0	
12/25/2015	16:11:06	171	4.6	13.48	2.9	0	
12/25/2015	16:11:56	172	4.5	13.51	6.7	0	
12/25/2015	16:12:46	183	4.5	13.52	10.5	0	
12/25/2015	16:13:36	198	4.5	13.53	14.3	0	
12/25/2015	16:14:26	267	5.6	13.54	18.5	0	
12/25/2015	16:15:00	264	5.5	13.54	21.6	0	Tail: 13.5 ppg
12/25/2015	16:15:16	282	5.6	13.54	23.1	0	
12/25/2015	16:16:00	303	5.6	13.54	27.2	0	1495 sks, Y = 1.68
12/25/2015	16:16:06	296	5.5	13.54	27.7	0	
12/25/2015	16:16:56	262	5.6	13.54	32.3	0	
12/25/2015	16:17:00	284	5.6	13.54	32.7	0	Wet Sry Samples Taken
12/25/2015	16:17:46	282	5.6	13.54	37.0	0	
12/25/2015	16:18:00	286	5.5	13.54	38.3	0	Wet Sample Verified
12/25/2015	16:18:36	284	5.6	13.54	41.6	0	
12/25/2015	16:19:26	358	6.2	13.56	46.5	0	
12/25/2015	16:20:16	362	6.2	13.56	51.7	0	
12/25/2015	16:21:06	368	6.2	13.55	56.9	0	
12/25/2015	16:21:56	361	6.2	13.55	62.1	0	
12/25/2015	16:22:46	361	6.2	13.54	67.3	0	
12/25/2015	16:23:36	373	6.2	13.54	72.5	0	
12/25/2015	16:24:26	364	6.2	13.54	77.7	0	
12/25/2015	16:25:16	355	6.2	13.53	82.9	0	
12/25/2015	16:26:06	368	6.2	13.53	88.1	0	
12/25/2015	16:26:56	369	6.2	13.54	93.3	0	
12/25/2015	16:27:46	347	6.2	13.54	98.5	0	
12/25/2015	16:28:36	361	6.2	13.54	103.6	0	
12/25/2015	16:29:26	374	6.2	13.54	108.8	0	
12/25/2015	16:30:16	355	6.2	13.54	114.0	0	
12/25/2015	16:31:06	352	6.2	13.54	119.2	0	
12/25/2015	16:31:56	364	6.2	13.54	124.4	0	
12/25/2015	16:32:46	365	6.2	13.54	129.6	0	
12/25/2015	16:33:36	342	6.2	13.54	134.8	0	
12/25/2015	16:34:26	371	6.2	13.53	140.0	0	
12/25/2015	16:35:16	365	6.2	13.52	145.2	0	
12/25/2015	16:36:06	360	6.2	13.52	150.4	0	
12/25/2015	16:36:56	368	6.2	13.53	155.5	0	
12/25/2015	16:37:46	374	6.2	13.52	160.7	0	
12/25/2015	16:38:36	384	6.2	13.53	165.9	0	
12/25/2015	16:39:26	357	6.2	13.50	171.1	0	
12/25/2015	16:40:16	336	6.2	13.54	176.3	0	

Well Wilson Ranch 32N-S27HZ			Field Wattenberg		Job Start Dec/24/2015	Customer Anadarko		Job Number DAXH-00577
Date	Time 24-hr clock	Treating Pressure PSI	Flow Rate B/M	Density LB/G	Volume BBL	Solid Fraction NULL	Message	
12/25/2015	16:41:56	370	6.2	13.52	186.7	0		
12/25/2015	16:42:46	387	6.2	13.47	191.9	0		
12/25/2015	16:43:36	320	6.2	13.40	197.1	0		
12/25/2015	16:44:26	358	6.3	13.46	202.3	0		
12/25/2015	16:45:16	362	6.2	13.53	207.5	0		
12/25/2015	16:46:06	400	6.2	13.72	212.7	0		
12/25/2015	16:46:56	362	6.2	13.64	217.9	0		
12/25/2015	16:47:46	383	6.3	13.52	223.1	0		
12/25/2015	16:48:36	344	6.2	13.46	228.3	0		
12/25/2015	16:49:26	340	6.3	13.47	233.5	0		
12/25/2015	16:50:00	353	6.2	13.49	237.1	0	Good Returns	
12/25/2015	16:50:16	361	6.3	13.45	238.7	0		
12/25/2015	16:51:06	350	6.3	13.50	243.9	0		
12/25/2015	16:51:56	370	6.2	13.52	249.2	0		
12/25/2015	16:52:46	368	6.3	13.52	254.4	0		
12/25/2015	16:53:36	364	6.2	13.52	259.6	0		
12/25/2015	16:54:26	386	6.3	13.53	264.8	0		
12/25/2015	16:55:16	376	6.2	13.53	270.0	0		
12/25/2015	16:56:06	362	6.2	13.53	275.2	0		
12/25/2015	16:56:56	392	6.2	13.52	280.4	0		
12/25/2015	16:57:46	373	6.2	13.49	285.6	0		
12/25/2015	16:58:36	334	6.2	13.48	290.7	0		
12/25/2015	16:59:26	372	6.2	13.50	295.9	0		
12/25/2015	17:00:16	364	6.2	13.42	301.1	0		
12/25/2015	17:01:06	341	6.2	13.51	306.3	0		
12/25/2015	17:01:56	388	6.2	13.61	311.5	0		
12/25/2015	17:02:46	352	6.2	13.51	316.7	0		
12/25/2015	17:03:36	361	6.2	13.48	321.9	0		
12/25/2015	17:04:26	372	6.2	13.48	327.1	0		
12/25/2015	17:05:16	350	6.2	13.48	332.3	0		
12/25/2015	17:06:06	350	6.2	13.49	337.5	0		
12/25/2015	17:06:56	402	6.2	13.67	342.7	0		
12/25/2015	17:07:46	374	6.2	13.59	347.9	0		
12/25/2015	17:08:36	373	6.3	13.56	353.1	0		
12/25/2015	17:09:26	356	6.2	13.56	358.2	0		
12/25/2015	17:10:16	377	6.2	13.55	363.4	0		
12/25/2015	17:11:06	376	6.2	13.54	368.6	0		
12/25/2015	17:11:56	366	6.3	13.54	373.8	0		
12/25/2015	17:12:46	369	6.2	13.54	379.0	0		
12/25/2015	17:13:36	378	6.2	13.53	384.2	0		
12/25/2015	17:14:26	367	6.2	13.53	389.4	0		
12/25/2015	17:15:16	355	6.2	13.53	394.6	0		
12/25/2015	17:16:06	350	6.2	13.53	399.8	0		
12/25/2015	17:16:56	370	6.2	13.51	405.0	0		
12/25/2015	17:17:46	373	6.2	13.52	410.1	0		
12/25/2015	17:18:36	326	6.2	13.52	415.3	0		
12/25/2015	17:19:26	360	6.2	13.54	420.5	0		
12/25/2015	17:20:16	375	6.3	13.55	425.7	0		
12/25/2015	17:21:06	381	6.2	13.54	430.9	0		
12/25/2015	17:21:56	350	6.2	13.54	436.1	0		
12/25/2015	17:22:46	353	6.2	13.57	441.3	9		
12/25/2015	17:23:00	354	6.2	13.56	442.8	17	End Tail Slurry	
12/25/2015	17:23:36	186	4.4	13.56	446.4	47		
12/25/2015	17:24:21	-86	0.1	0.82	448.8	0	Reset Total, Vol = 448 bbl	

Well			Field		Job Start		Customer		Job Number
Wilson Ranch 32N-S27HZ			Wattenberg		Dec/24/2015		Anadarko		DAXH-00577
Date	Time 24-hr clock	Treating Pressure PSI	Flow Rate B/M	Density LB/G	Volume BBL	Solid Fraction NULL	Message		
12/25/2015	17:25:16	-97	0.0	13.68	0.1	0			
12/25/2015	17:26:06	-98	0.0	13.64	0.1	0			
12/25/2015	17:26:56	-98	0.0	13.51	0.2	0			
12/25/2015	17:27:46	-99	0.1	13.46	0.2	0			
12/25/2015	17:28:00	-98	0.0	13.47	0.2	0	Wash Pump Lines		
12/25/2015	17:28:36	-98	0.2	11.83	0.2	0			
12/25/2015	17:29:26	-95	0.0	1.02	0.3	0			
12/25/2015	17:30:16	25	3.2	9.19	1.5	78			
12/25/2015	17:31:06	30	4.1	8.90	4.5	41			
12/25/2015	17:31:56	37	0.0	8.85	7.5	0			
12/25/2015	17:32:46	35	3.8	8.83	9.6	45			
12/25/2015	17:33:36	56	4.0	8.38	12.7	0			
12/25/2015	17:34:00	-86	0.1	8.35	14.0	0	Drop Top Plug		
12/25/2015	17:34:26	-99	0.0	8.35	14.0	0			
12/25/2015	17:35:16	-102	0.0	8.35	0.0	0			
12/25/2015	17:36:00	-99	0.4	8.35	0.0	0	Start Displacement		
12/25/2015	17:36:06	-80	1.3	8.35	0.1	0			
12/25/2015	17:36:56	-70	2.3	8.39	1.9	0			
12/25/2015	17:37:46	-61	2.3	8.38	3.8	0			
12/25/2015	17:38:36	-2	4.6	8.38	6.4	0			
12/25/2015	17:39:26	61	6.2	8.37	10.9	0			
12/25/2015	17:40:00	66	6.2	8.38	14.4	0	Good Returns		
12/25/2015	17:40:16	60	6.2	8.38	16.0	0			
12/25/2015	17:41:06	59	6.2	8.38	21.2	0			
12/25/2015	17:41:56	53	6.2	8.35	26.3	0			
12/25/2015	17:42:46	58	6.2	8.35	31.4	0			
12/25/2015	17:43:36	62	6.2	8.36	36.6	0			
12/25/2015	17:44:26	63	6.2	8.36	41.7	0			
12/25/2015	17:45:16	166	6.2	8.35	46.9	0			
12/25/2015	17:46:06	417	6.1	8.35	52.0	0			
12/25/2015	17:46:56	471	6.2	8.35	57.1	0			
12/25/2015	17:47:46	544	6.2	8.35	62.2	0			
12/25/2015	17:48:36	629	6.2	8.35	67.4	0			
12/25/2015	17:49:26	663	6.2	8.35	72.6	0			
12/25/2015	17:50:16	729	6.2	8.35	77.7	0			
12/25/2015	17:51:06	795	6.2	8.35	82.9	0			
12/25/2015	17:51:56	893	6.2	8.35	88.1	0			
12/25/2015	17:52:46	916	6.2	8.35	93.2	0			
12/25/2015	17:53:36	1005	6.2	8.35	98.4	0			
12/25/2015	17:54:26	1073	6.2	8.35	103.5	0			
12/25/2015	17:55:16	1132	6.2	8.35	108.7	0			
12/25/2015	17:56:06	1236	6.2	8.35	113.8	0			
12/25/2015	17:56:56	1310	6.2	8.35	118.9	0			
12/25/2015	17:57:46	1353	6.2	8.35	124.1	0			
12/25/2015	17:58:36	1441	6.1	8.35	129.2	0			
12/25/2015	17:59:26	1490	6.1	8.35	134.3	0			
12/25/2015	18:00:16	1611	6.2	8.35	139.5	0			
12/25/2015	18:01:06	1682	6.2	8.35	144.7	0			
12/25/2015	18:01:56	1724	6.2	8.35	149.8	0			
12/25/2015	18:02:46	1810	6.2	8.35	155.0	0			
12/25/2015	18:03:36	1898	6.2	8.36	160.2	0			
12/25/2015	18:04:26	1960	6.2	8.35	165.4	0			
12/25/2015	18:05:16	1978	6.2	8.36	170.5	0			
12/25/2015	18:06:06	2071	6.2	8.36	175.7	0			

Well Wilson Ranch 32N-S27HZ			Field Wattenberg		Job Start Dec/24/2015	Customer Anadarko		Job Number DAXH-00577
Date	Time 24-hr clock	Treating Pressure PSI	Flow Rate B/M	Density LB/G	Volume BBL	Solid Fraction NULL	Message	
12/25/2015	18:07:46	2124	6.2	8.36	186.0	0		
12/25/2015	18:08:36	2131	6.2	8.36	191.2	0		
12/25/2015	18:09:26	2098	6.2	8.36	196.3	0		
12/25/2015	18:10:16	2155	6.2	8.37	201.5	0		
12/25/2015	18:11:06	2143	6.2	8.36	206.6	0		
12/25/2015	18:11:56	2177	6.2	8.37	211.8	0		
12/25/2015	18:12:46	2137	6.2	8.37	216.9	0		
12/25/2015	18:13:36	2199	6.2	8.37	222.1	0		
12/25/2015	18:14:26	2196	6.2	8.37	227.3	0		
12/25/2015	18:15:16	2199	6.2	8.37	232.4	0		
12/25/2015	18:16:06	2230	6.2	8.37	237.6	0		
12/25/2015	18:16:56	2233	6.2	8.37	242.7	0		
12/25/2015	18:17:46	2207	6.2	8.37	247.9	0		
12/25/2015	18:18:36	2246	6.2	8.37	253.0	0		
12/25/2015	18:19:26	2239	6.2	8.37	258.2	0		
12/25/2015	18:20:16	2270	6.2	8.37	263.3	0		
12/25/2015	18:21:06	2252	6.2	8.37	268.5	0		
12/25/2015	18:21:56	2277	6.2	8.37	273.6	0		
12/25/2015	18:22:46	2311	6.2	8.37	278.8	0		
12/25/2015	18:23:36	2302	6.2	8.37	283.9	0		
12/25/2015	18:24:26	2342	6.2	8.37	289.1	0		
12/25/2015	18:25:16	2316	6.2	8.37	294.2	0		
12/25/2015	18:26:06	2331	6.2	8.37	299.4	0		
12/25/2015	18:26:56	2360	6.2	8.37	304.5	0		
12/25/2015	18:27:46	2376	6.2	8.37	309.7	0		
12/25/2015	18:28:36	2395	6.2	8.37	314.8	0		
12/25/2015	18:29:26	2360	6.2	8.37	320.0	0		
12/25/2015	18:30:16	2414	6.2	8.37	325.1	0		
12/25/2015	18:31:06	2396	6.2	8.37	330.2	0		
12/25/2015	18:31:56	2420	6.2	8.37	335.4	0		
12/25/2015	18:32:46	2410	6.2	8.37	340.5	0		
12/25/2015	18:33:36	2412	6.2	8.37	345.7	0		
12/25/2015	18:34:26	2469	6.2	8.37	350.8	0		
12/25/2015	18:35:00	2461	6.2	8.37	354.3	0	Cmt back @ 360 bbls away	
12/25/2015	18:35:16	2444	6.2	8.37	356.0	0		
12/25/2015	18:36:06	2462	6.2	8.37	361.1	0		
12/25/2015	18:36:56	2471	6.2	8.37	366.3	0		
12/25/2015	18:37:46	2236	4.2	8.37	371.2	0		
12/25/2015	18:38:36	2140	4.2	8.37	374.7	0		
12/25/2015	18:39:26	2247	4.2	8.37	378.2	0		
12/25/2015	18:40:16	1945	2.0	8.37	380.8	0		
12/25/2015	18:41:06	1948	2.0	8.37	382.5	0		
12/25/2015	18:41:56	1959	2.0	8.37	384.1	0		
12/25/2015	18:42:00	1961	2.0	8.37	384.2	0	Bump Top Plug	
12/25/2015	18:42:01	1958	2.0	8.37	384.3	0	End Displacement	
12/25/2015	18:42:46	2115	2.0	8.37	385.8	0		
12/25/2015	18:43:00	2363	0.3	8.37	386.2	0	21 bbls Cmt back	
12/25/2015	18:43:36	2460	0.0	8.37	386.2	0		
12/25/2015	18:44:26	2430	0.0	8.37	386.2	0		
12/25/2015	18:45:00	2450	0.0	8.38	386.2	0	Csg Test: 3000 psi	
12/25/2015	18:45:16	2426	0.0	8.38	386.2	0		
12/25/2015	18:46:06	2463	0.0	8.38	386.2	0		
12/25/2015	18:46:56	2484	0.0	8.38	386.2	0		
12/25/2015	18:47:46	2523	0.2	8.38	386.2	0		

Well Wilson Ranch 32N-S27HZ			Field Wattenberg		Job Start Dec/24/2015	Customer Anadarko		Job Number DAXH-00577
Date	Time 24-hr clock	Treating Pressure PSI	Flow Rate B/M	Density LB/G	Volume BBL	Solid Fraction NULL	Message	
12/25/2015	18:49:26	2984	0.0	8.38	386.8	0		
12/25/2015	18:50:16	3016	0.0	8.38	386.8	0		
12/25/2015	18:51:06	3040	0.0	8.38	386.8	0		
12/25/2015	18:51:56	3039	0.0	8.38	386.8	0		
12/25/2015	18:52:46	3052	0.0	8.38	386.8	0		
12/25/2015	18:53:36	3075	0.0	8.38	386.8	0		
12/25/2015	18:54:26	3086	0.0	8.38	386.8	0		
12/25/2015	18:55:16	3098	0.0	8.38	386.8	0		
12/25/2015	18:56:06	3115	0.0	8.38	386.8	0		
12/25/2015	18:56:56	3127	0.0	8.38	386.8	0		
12/25/2015	18:57:46	3141	0.0	8.38	386.8	0		
12/25/2015	18:58:00	3144	0.0	8.38	386.8	0	Csg Test: Good	
12/25/2015	18:58:13	3148	0.0	8.38	386.8	0	Floats Held, 5 bbls back	
12/25/2015	18:58:36	3154	0.0	8.38	386.8	0		
12/25/2015	18:58:45	3157	0.0	8.38	386.8	0	End Job	
12/25/2015	18:59:26	2676	0.0	8.38	386.8	0		
12/25/2015	19:00:16	1140	0.0	8.38	386.8	0		
12/25/2015	19:01:06	-112	0.0	8.38	386.8	0		
12/25/2015	19:01:56	-113	0.0	8.38	386.8	0		
12/25/2015	19:02:46	-113	0.0	8.38	386.8	0		
12/25/2015	19:03:36	-112	0.0	8.38	386.8	0		
12/25/2015	19:04:26	-113	0.0	8.38	386.8	0		

Post Job Summary

Average Pump Rates, bbl/min					Volume of Fluid Injected, bbl							
Slurry	N2	Mud	Maximum Rate		Total Slurry 720.0	Mud	Spacer 87.0	N2				
Treating Pressure Summary, psi					Breakdown Fluid							
Maximum	Final 0	Average	Bump Plug to 2400	Breakdown	Type	Volume bbl	Density lb/gal					
Avg. N2 Percent %	Designed Slurry Volume 715.0 bbl	Displacement 381.0 bbl	Mix Water Temp 70 degF	Cement Circulated to Surface? <input checked="" type="checkbox"/>		Volume 21.0 bbl						
				Washed Thru Perfs <input type="checkbox"/>		To ft						
Customer or Authorized Representative Luke Rains			Schlumberger Supervisor Matlock/Reedy			Circulation Lost <input type="checkbox"/>	Job Completed <input checked="" type="checkbox"/>					
						-	-					