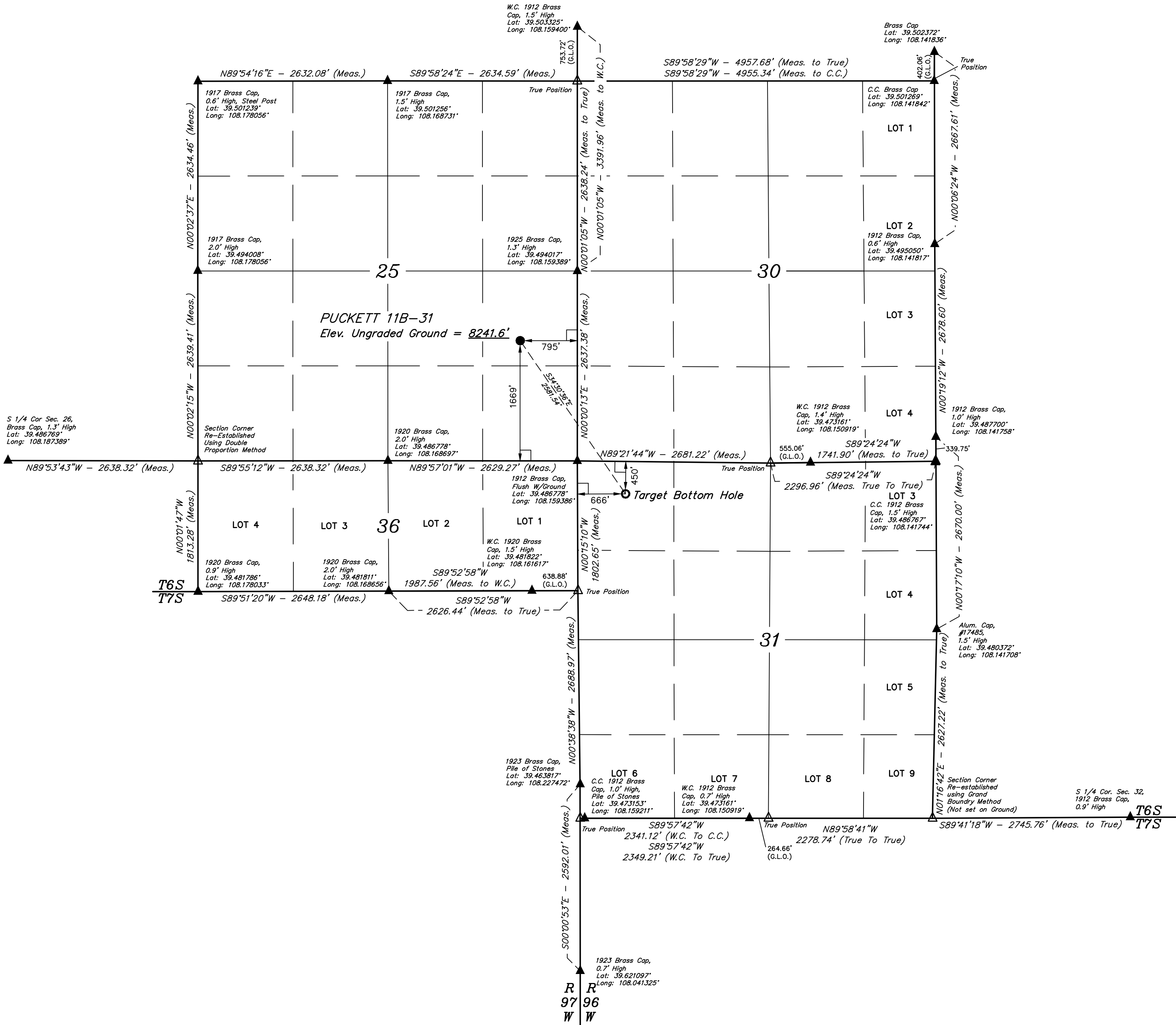


LEGEND:

- └─ = 90° SYMBOL
● = PROPOSED WELLHEAD.
○ = TARGET BOTTOM HOLE.
▲ = SECTION CORNERS
LOCATED. (NAD 83)
△ = SECTION CORNERS
RE-ESTABLISHED.
(Not Set on Ground.)
(NAD 83)

T6S, R97W, 6th P.M.



| NAD 83 (TARGET BOTTOM HOLE) | NAD 83 (SURFACE LOCATION) |
|----------------------------------------|----------------------------------------|
| LATITUDE = 39°29'07.88" (39.485532) | LATITUDE = 39°29'28.89" (39.491358) |
| LONGITUDE = 108°09'25.27" (108.157019) | LONGITUDE = 108°09'43.94" (108.162206) |
| NAD 27 (TARGET BOTTOM HOLE) | NAD 27 (SURFACE LOCATION) |
| LATITUDE = 39°29'07.96" (39.485544) | LATITUDE = 39°29'28.97" (39.491381) |
| LONGITUDE = 108°09'22.98" (108.156383) | LONGITUDE = 108°09'41.65" (108.161569) |
| UTM NAD 27 (ZONE 12) | UTM NAD 27 (ZONE 12) |
| N: 14351389.10 E: 2442802.50 | N: 143533468.40 E: 2441272.32 |

BASIS OF BEARINGS
BASIS OF BEARINGS IS A G.P.S. OBSERVATION
BASIS OF ELEVATION
SPOT ELEVATION AT THE NORTHWEST CORNER OF SECTION 30, T6S, R95W, 6th P.M. TAKEN FROM THE FORKED GULCH QUADRANGLE, COLORADO, GARFIELD COUNTY, 7.5 MINUTE SERIES (TOPOGRAPHICAL MAP) PUBLISHED BY THE UNITED STATES DEPARTMENT OF THE INTERIOR, GEOLOGICAL SURVEY. SAID ELEVATION IS MARKED AS BEING 5966 FEET.



UELS, LLC
Corporate Office * 85 South 200 East
Vernal, UT 84078 * (435) 789-1017



CERTIFICATE
THIS IS TO CERTIFY THAT THE ABOVE PLAT WAS PREPARED FROM FIELD NOTES OF ACTUAL SURVEYS MADE BY ME AND UNDER MY SUPERVISION, AND THAT THE SAME ARE TRUE AND CORRECT TO THE BEST OF MY KNOWLEDGE AND BELIEF.
Handwritten Signature: Harold Marshall
REGISTERED SURVEYOR
REGISTRATION NO. 38130
STATE OF COLORADO
6-15-16

Caerus Oil & Gas LLC

PUCKETT 11B-31
NE 1/4 SE 1/4, SECTION 25, T6S, R97W, 6th P.M.
GARFIELD COUNTY, COLORADO

| SURVEYED BY | DATE | REVISED BY | DATE |
|-------------------|------------|------------|------|
| BRANDEN BOX, B.B. | 12-08-15 | | |
| DRAWN BY | DATE | | |
| C.D.L. | 01-06-16 | | |
| SCALE | 1" = 1000' | | |

WELL LOCATION PLAT