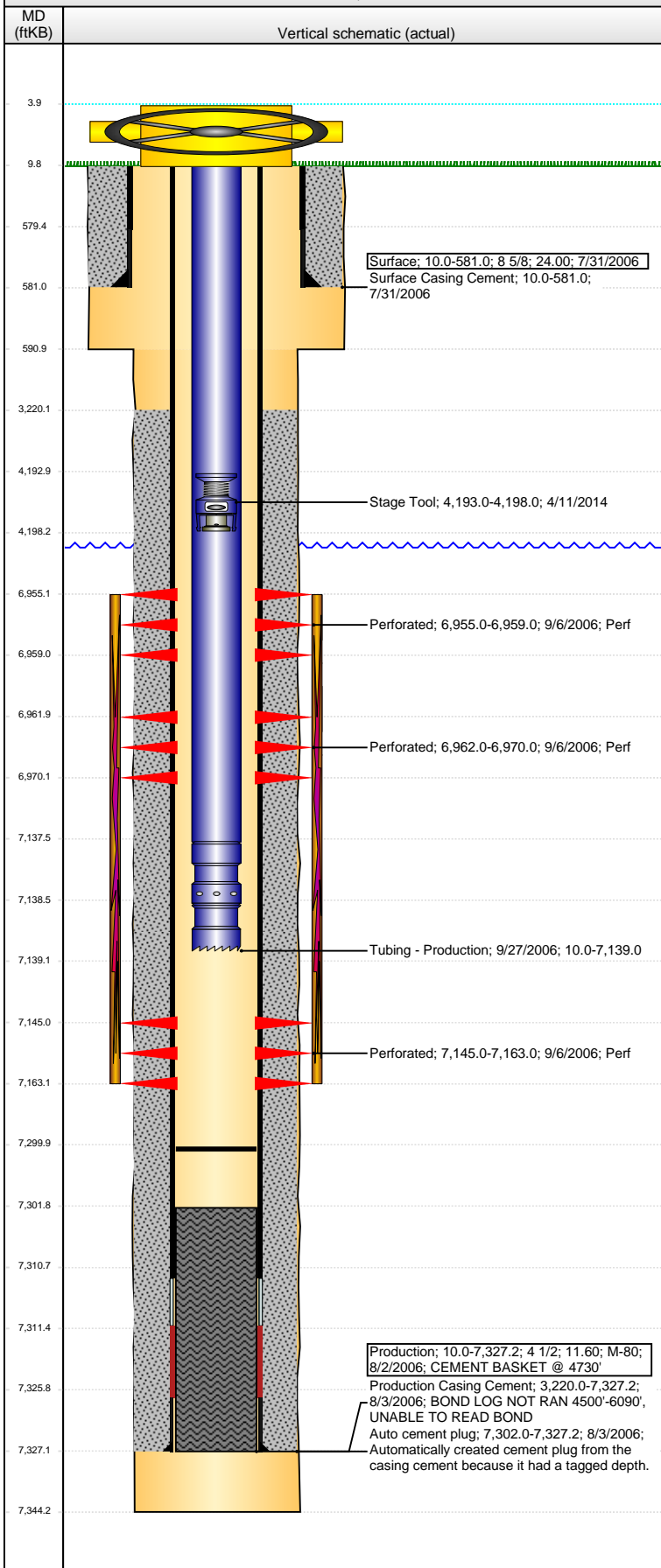


Well Name: TRE-MAT 23-13

VERTICAL - ORIGINAL HOLE, 2/23/2016 12:00:05 PM



Well Header

API	Business Unit	District	Well Config
05-123-23551	DJ BASIN	15	VERTICAL
Original KB Elevation (ft)	KB - GL / MSL (ftKB)	Spud Date	P & A Date
4,787.00	10.00	7/30/2006	

Comment

DISCREPANCY: DRL RPT TD 7287', ST RPT & LOG TD 7344'. USED 7344'.

Directions To Well

Congressional Location

Quarter 1	Quarter 2	Quarter 3	Quarter 4	Section	Township	Twnshp N...	Range	Rng E/W Dir
	SE	SW	NE	23	6	N	67	W

Bottom Hole Location

North-South Distance (ft)	From N or S Line	East-West Distance (ft)	From E or W Line

Plug Back Total Depths

Date	Depth (ftKB)	Method	Com
8/2/2006	7,310.8	CASING TALLY	TOP OF FLOAT COLLAR
8/31/2006	7,302.0	CASED HOLE LOG	DEPTH LOGGER ON CBL
9/27/2006	7,300.0	TAG	LAST REPORTED CLEAN OUT

Wellbore Sections

Section Des	Size (in)	Act Top, MD (ftKB)	Act Btm, MD (ftKB)
SURFACE	12 1/4	10.0	591.0
PRODUCTION	7 7/8	591.0	7,344.0

Zone Statuses

Zone Name	Status Date	Status	Fluid Type	Job	Prod Method
NIOBRARA	9/13/2006	PR		DRILLING/CO...	
NIOBRARA	1/6/2011	PR	Water		Flowing
CODELL	9/13/2006	PR		DRILLING/CO...	
CODELL	1/6/2011	PR	Water		Flowing
CODELL	2/13/2015	PR			

Casing Strings

Surface, 581.0ftKB

Casing Description	Run Date	OD (in)	Wt/Len (l...)	Grade	Top, MD (ft...)	MD (ftKB)
Surface	7/31/2006	8 5/8	24.00		10.0	581.0

Production, 7,327.2ftKB

Casing Description	Run Date	OD (in)	Wt/Len (l...)	Grade	Top, MD (ft...)	MD (ftKB)
Production	8/2/2006	4 1/2	11.60	M-80	10.0	7,327.2

Cement

Description	Top Depth (ftKB)	Bottom Depth (ftKB)
Surface Casing Cement	10.0	581.0
Description	Top Depth (ftKB)	Bottom Depth (ftKB)
Production Casing Cement	3,220.0	7,327.2

Tubing Strings

Tubing Description	Run Date	String...	ID (in)	Wt (lb/ft)	Grade	Len (ft)	Set De...
Tubing - Production	9/27/2006	2 3/8				7,129.00	

Tubing Components

Item Des	OD (in)	Wt (lb/ft)	Grade	Jts	Len (ft)	Btm (ftKB)	Btm (TVD) (ftKB)
Tubing	2 3/8			213	7,127.50	7,137.5	
Seal Nipple	2 3/8				1.00	7,138.5	
Notched collar	2 3/8				0.50	7,139.0	

Perforation Data

Zone	Bnch/St g	Entered Shot Total	Top (ftKB)	Btm (ftKB)	Date
NIOBRARA, ORIGINAL HOLE	B	8	6,955.00	6,959.00	9/6/2006
NIOBRARA, ORIGINAL HOLE	B	16	6,962.00	6,970.00	9/6/2006
CODELL, ORIGINAL HOLE		18	7,145.00	7,163.00	9/6/2006

Stimulations & Treatments

Date	Zone	Primary Job Type
9/6/2006	NIOBRARA, ORIGINAL HOLE	DRILLING/COMPLETION - ORIGINAL
Technical Result	Tech Result Details	Tech Result Note

Comment

ACIDIZING

Well Name: TRE-MAT 23-13

VERTICAL - ORIGINAL HOLE, 2/23/2016 12:00:07 PM

Stimulations & Treatments

Date 9/7/2006	Zone NIOBRARA-CODELL, ORIGINAL HOLE	Primary Job Type DRILLING/COMPLETION - ORIGINAL
Technical Result	Tech Result Details	Tech Result Note

Comment
LIMITED ENTRY FRAC

Other In Hole

Run Date	Des	OD (in)	Top (ftKB)	Btm (ftKB)
4/11/2014	Stage Tool	2	4,193.0	4,198.0

Logs

Date	Type	Top, MD (ftKB)	Btm, MD (ftKB)
8/3/2006	COMPENSATED DENSITY	3,000.0	7,324.0
8/3/2006	INDUCTION	581.0	7,344.0
8/31/2006	CBL/CCL/GR	3,000.0	7,300.0

