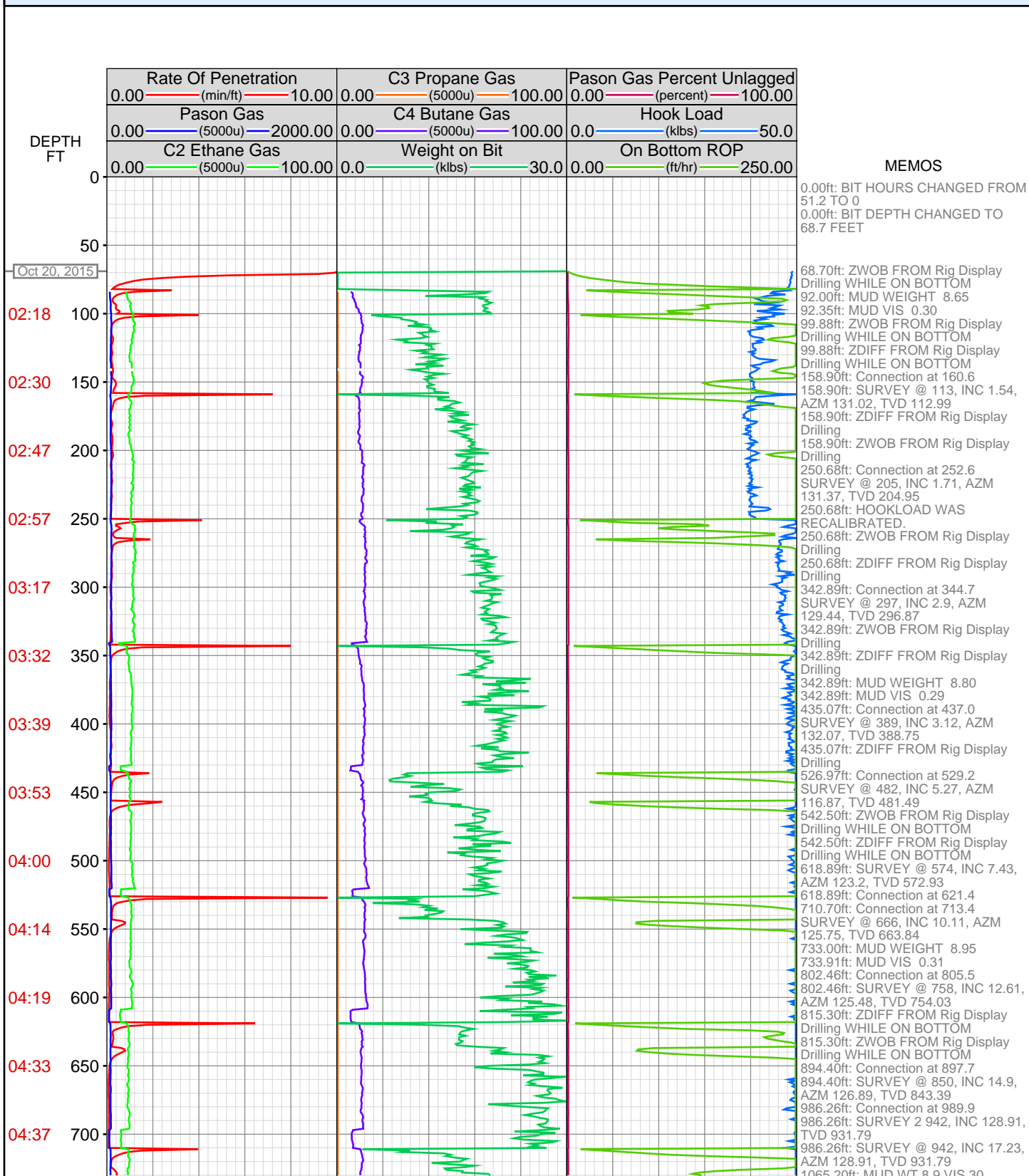


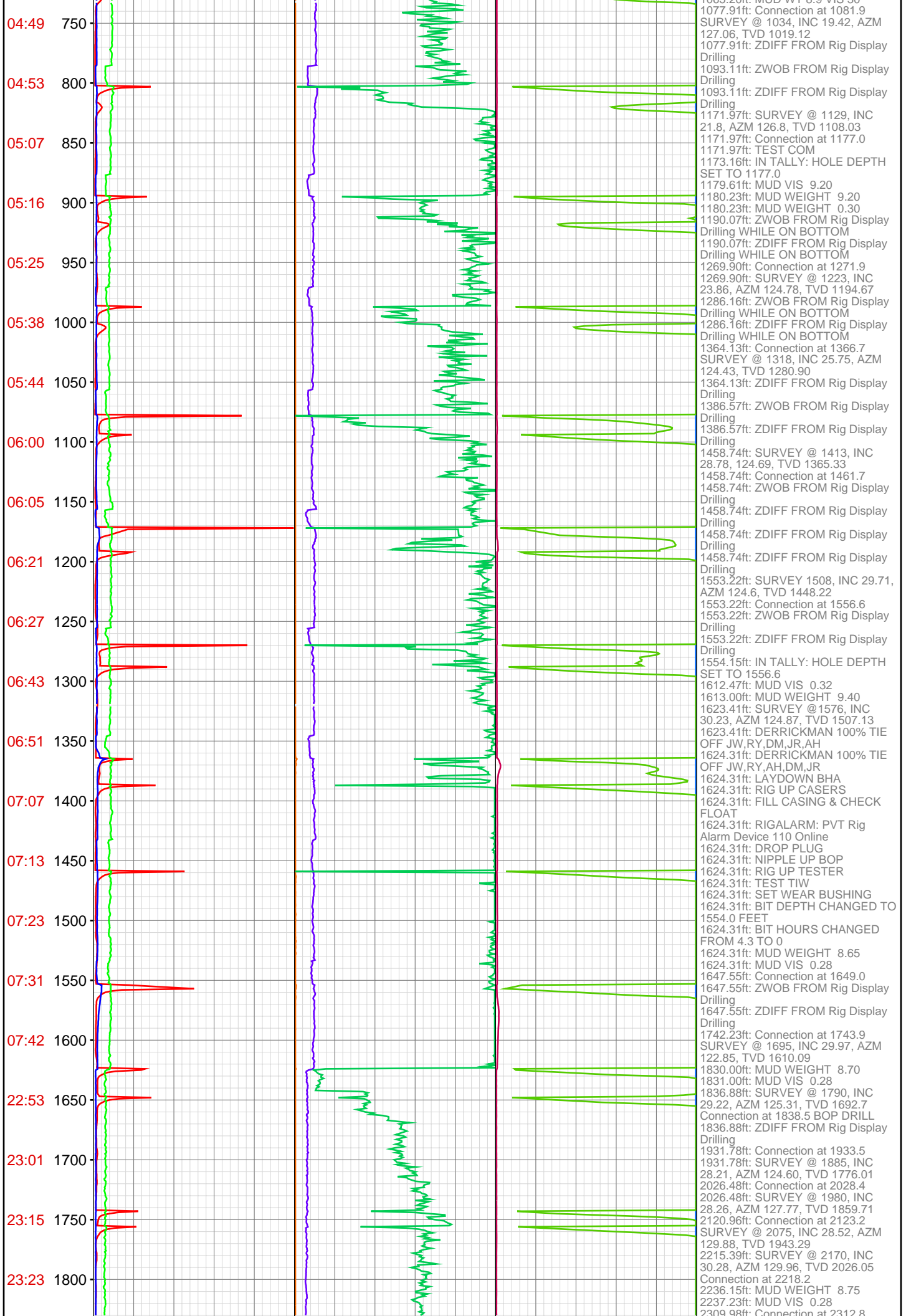
DataHub EDR Log

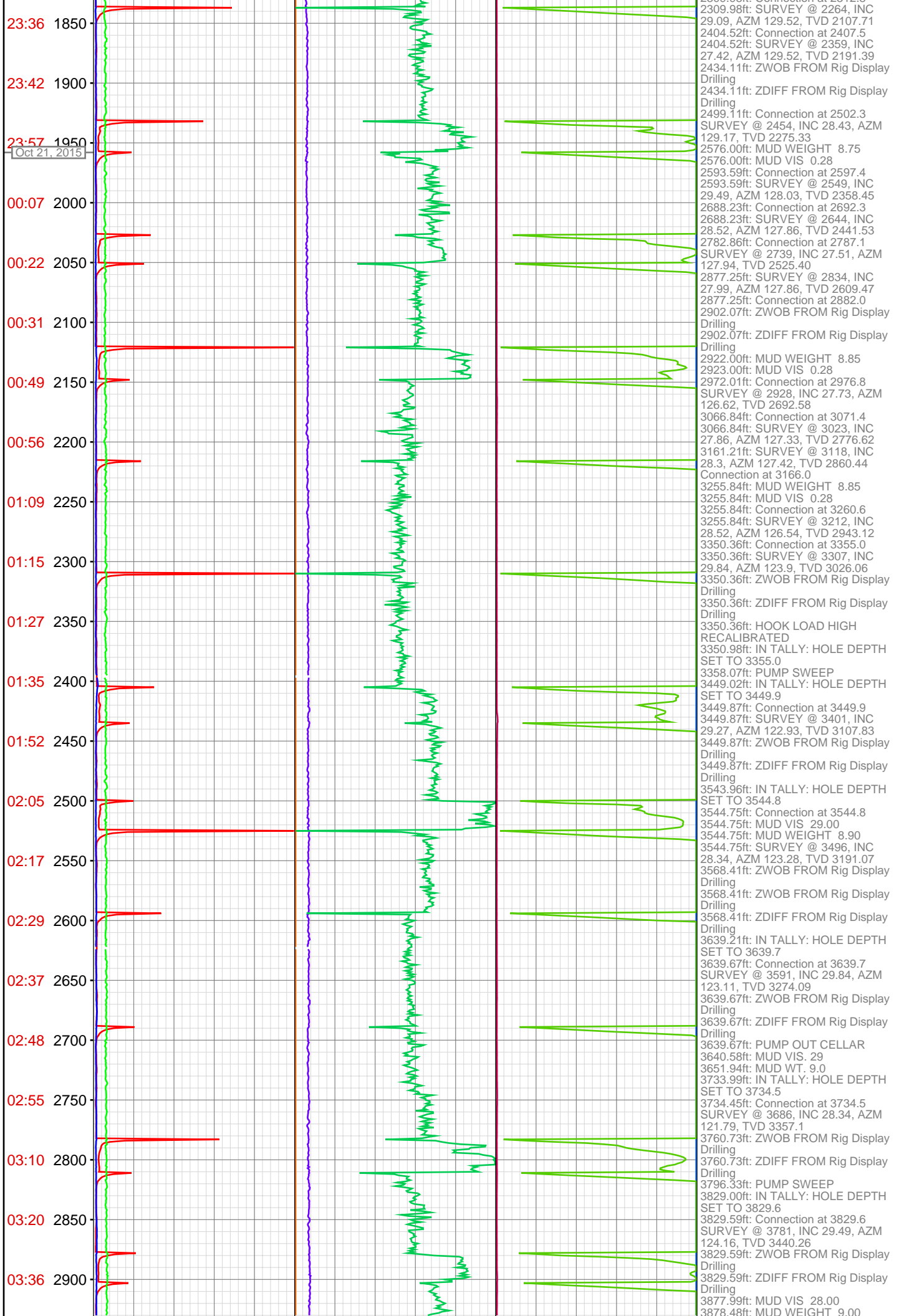
Sun Oct 25, 2015 08:35:07
Well Dossier 1445324969
Andy McCarthy

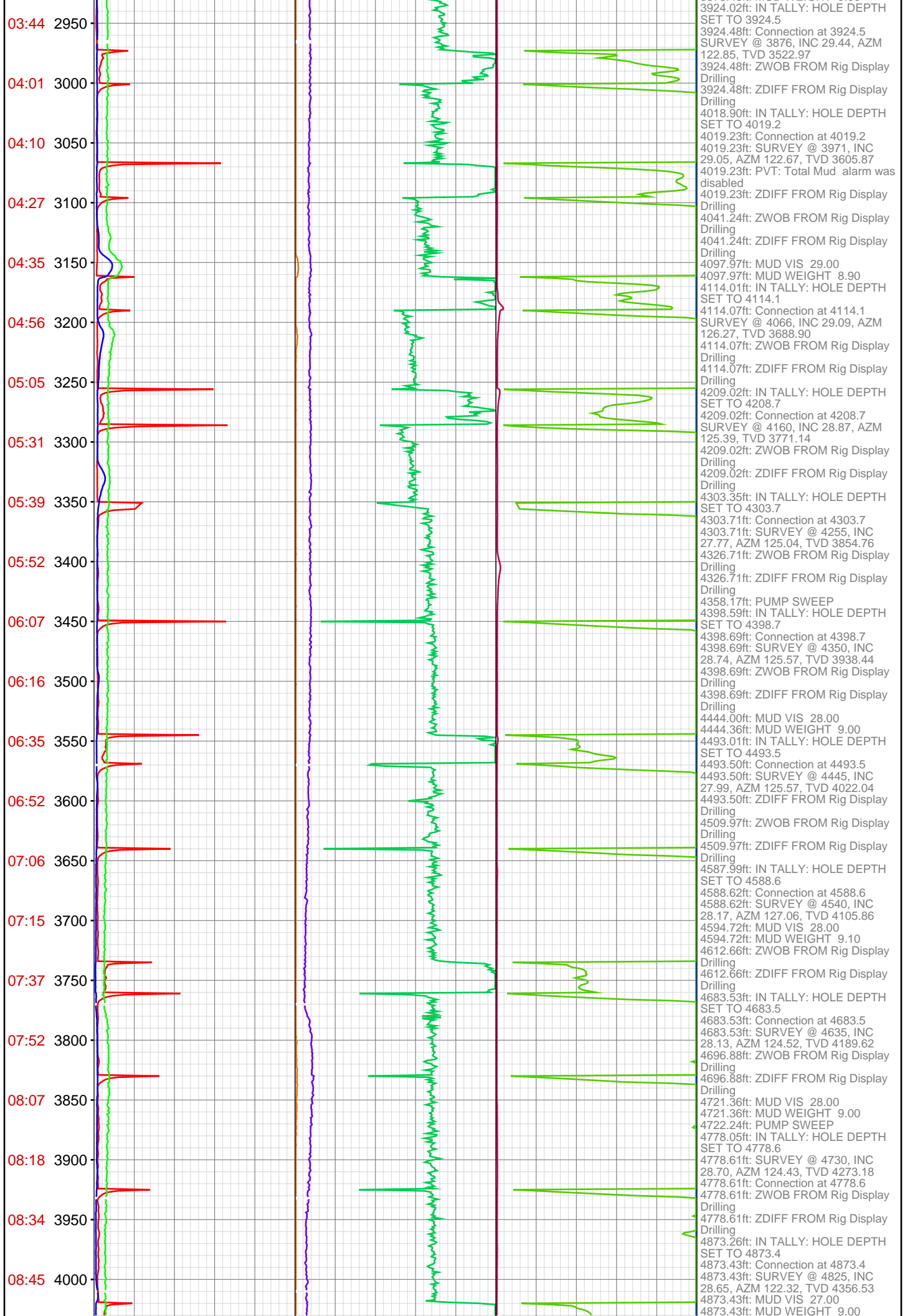
OPERATOR: Piceance Energy, LLC
WELL: PICEANCE FEDERAL 28-19E
FIELD:
LOCATION: SEC 28 TWP 9S RNG 93W
COUNTRY: USA
RIG: Pat-UTI 306

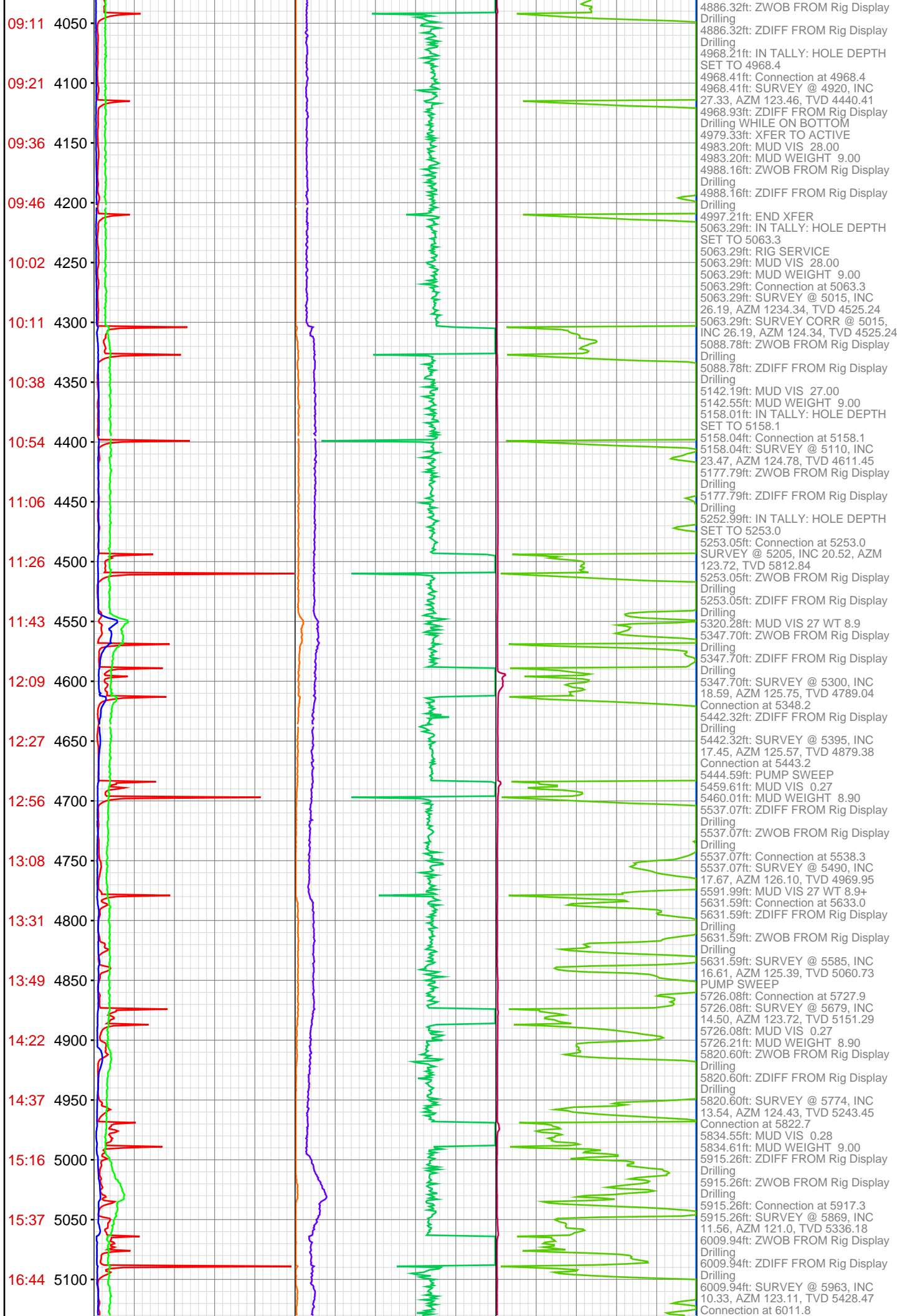
CONTRACTOR: Patterson-UTI Drilling Company
UNIQUE WELL ID: 05-077-10254-00
SPUD DATE: Oct 20, 2015 02:00
RELEASE DATE: Oct 24, 2015 10:00

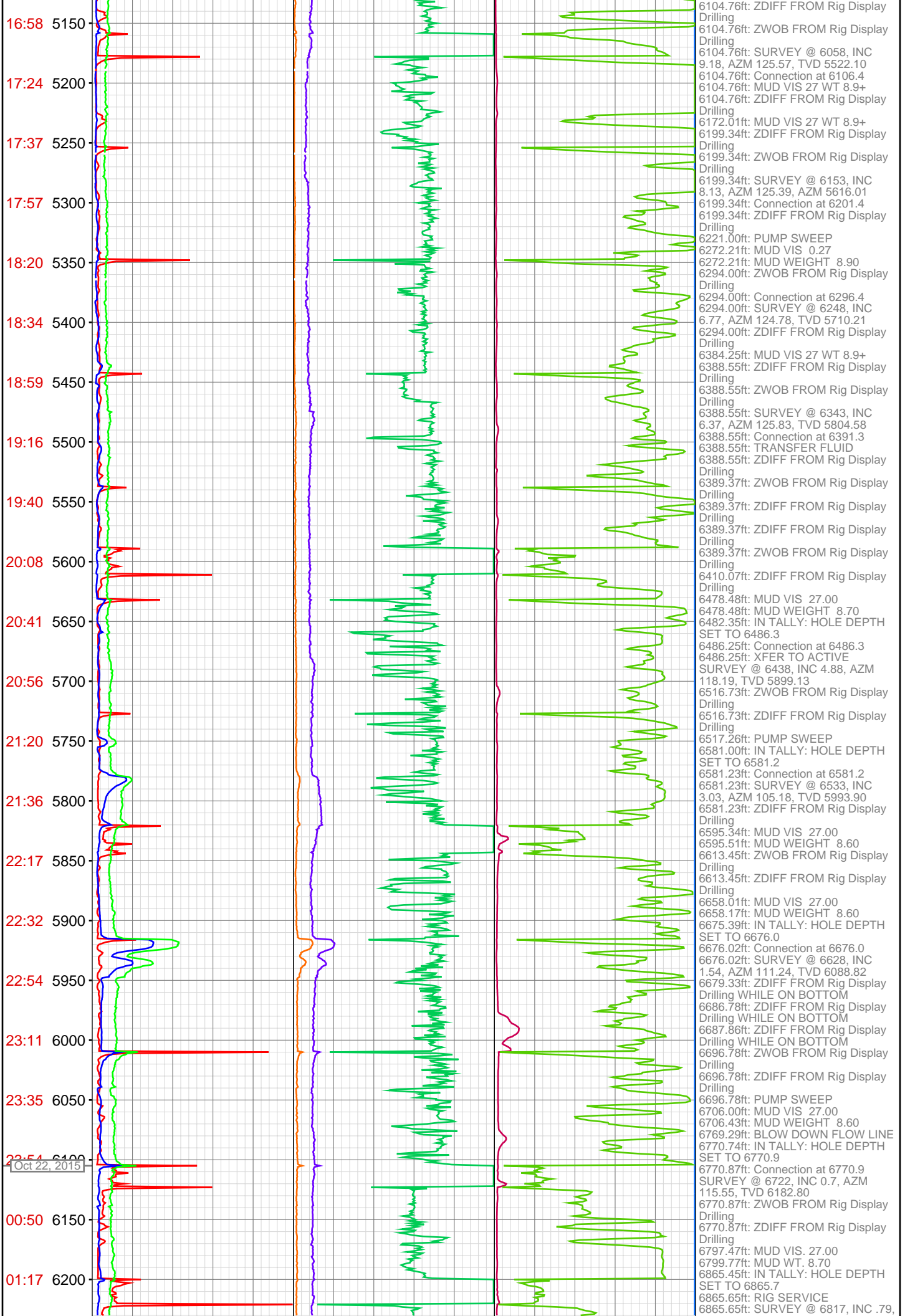


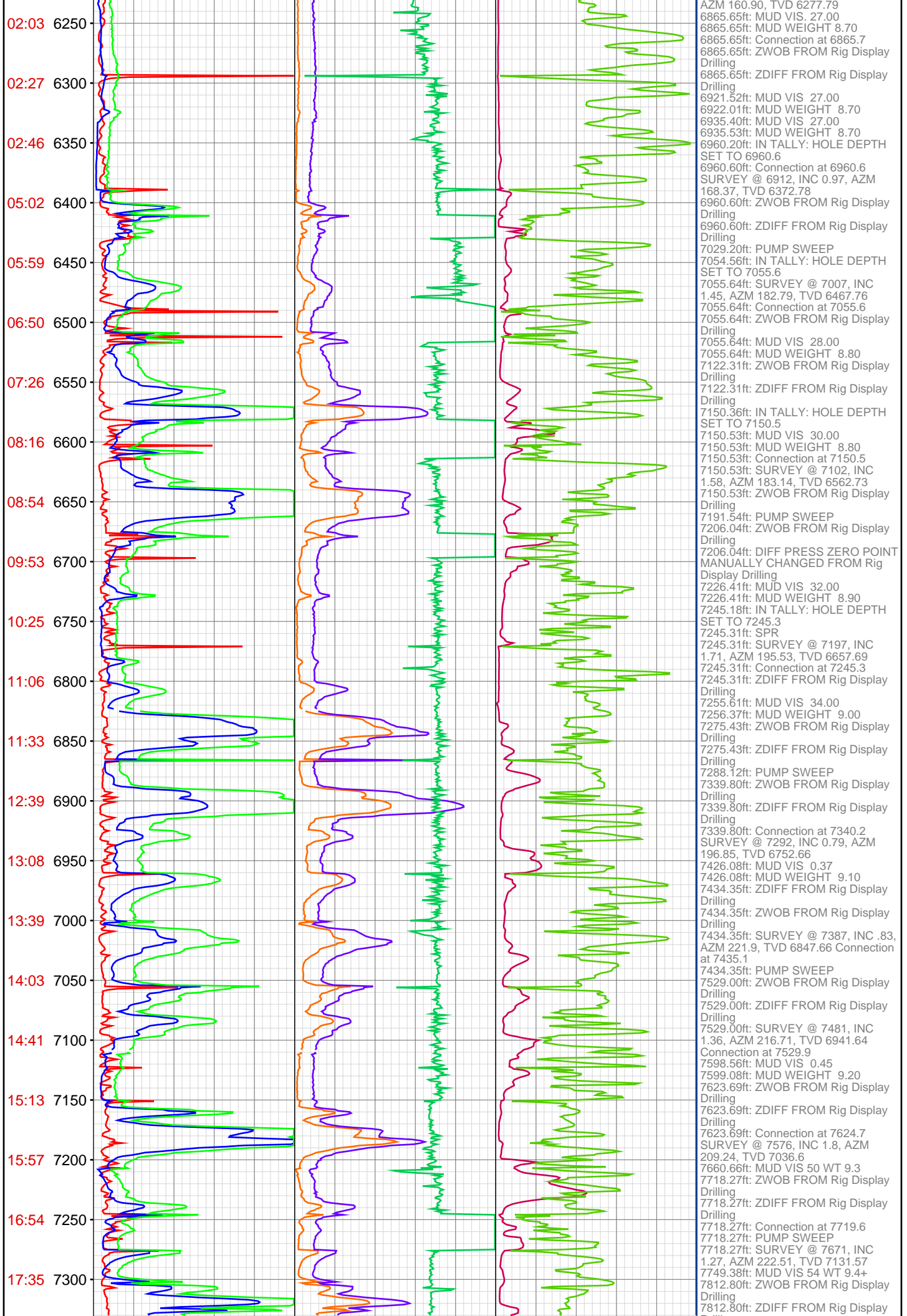


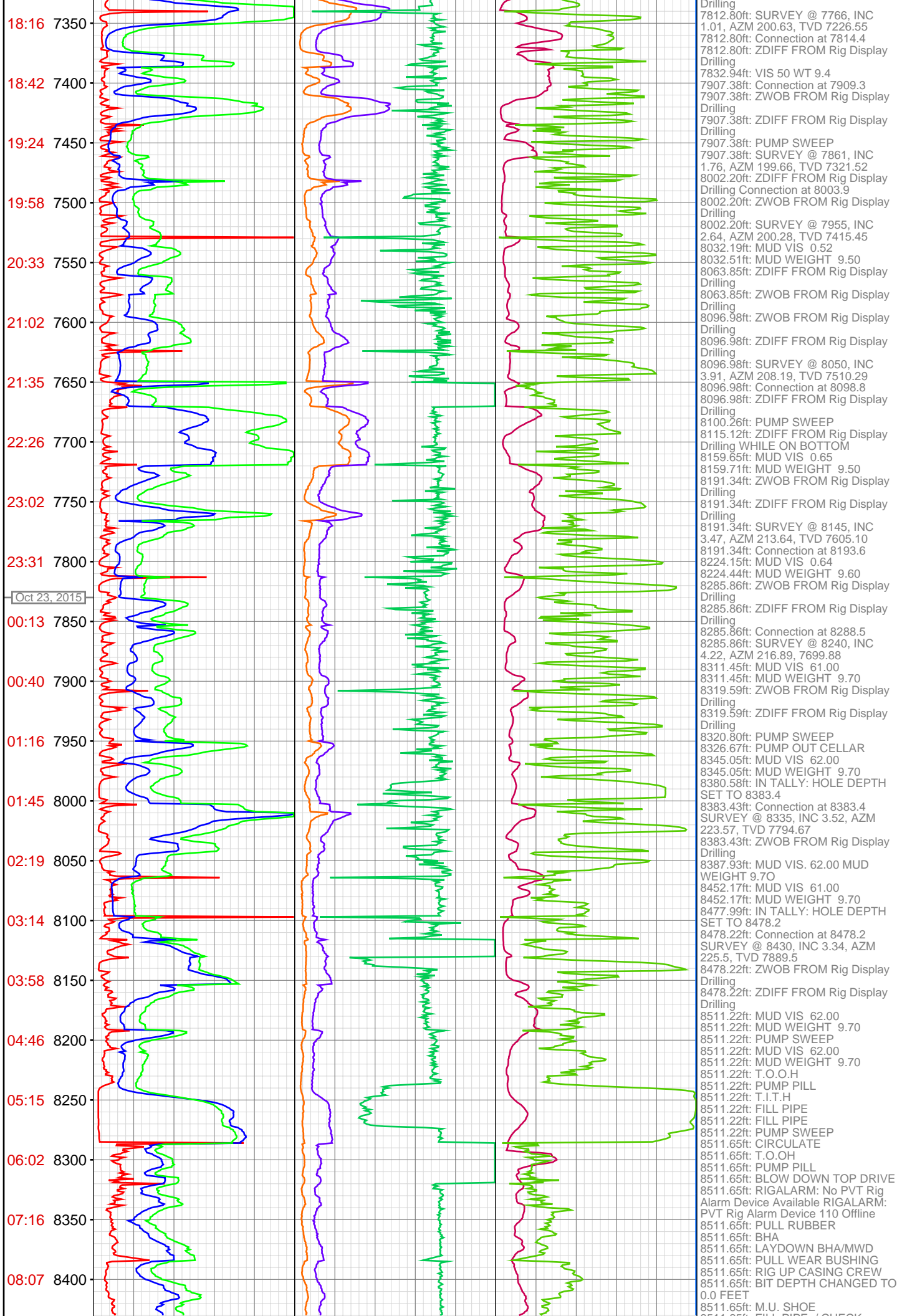












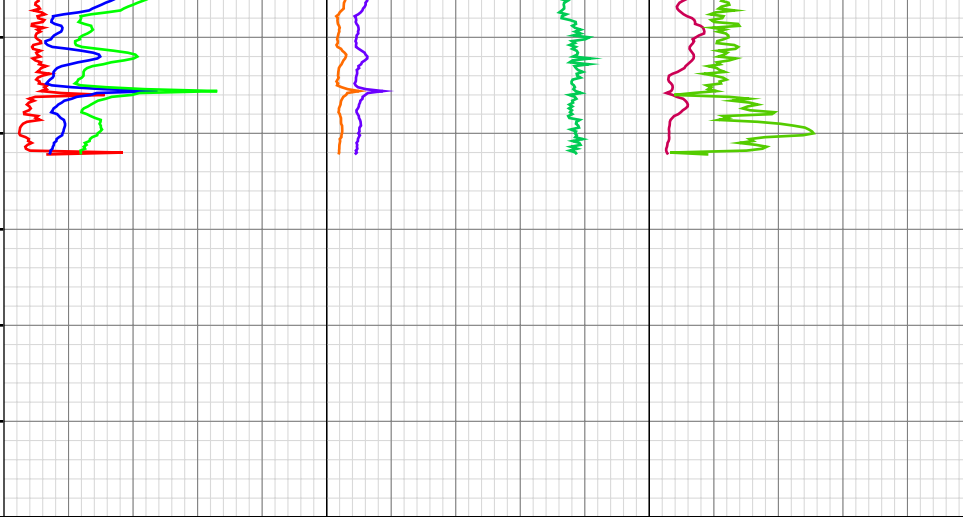
08:57 8450

09:57 8500

8550

8600

8650



8511.65ft: FILL PIPE / CHECK
FLOATS
8511.65ft: ZDIFF FROM Rig Display
Drilling
8511.65ft: BIT DEPTH CHANGED TO
4271.0 FEET
8511.65ft: CASING LANDED
8511.65ft: RIG DOWN CASERS
8511.65ft: P.J.S.M.
8511.65ft: BIT DEPTH CHANGED TO
8501.0 FEET
8511.65ft: R/U CEMENTERS
8511.65ft: TEST CEMENT LINES
8511.65ft: PUMP SPACER
8511.65ft: PVT: Flow Sensor 1 alarm
was disabled
8511.65ft: PUMP LEAD
8511.65ft: PUMP LEAD
8511.65ft: PUMP TAIL
8511.65ft: CLEAN CEMENT LINES
8511.65ft: DROP PLUG
8511.65ft: BUMP PLUG
8511.65ft: SET PACK OFF
8511.65ft: NIPPLE DOWN BOP
8542.06ft: ATTEMPTED TO ZERO
TOTAL STROKES
8542.06ft: ATTEMPTED TO SET
HOLE DEPTH TO 0.00 FEET