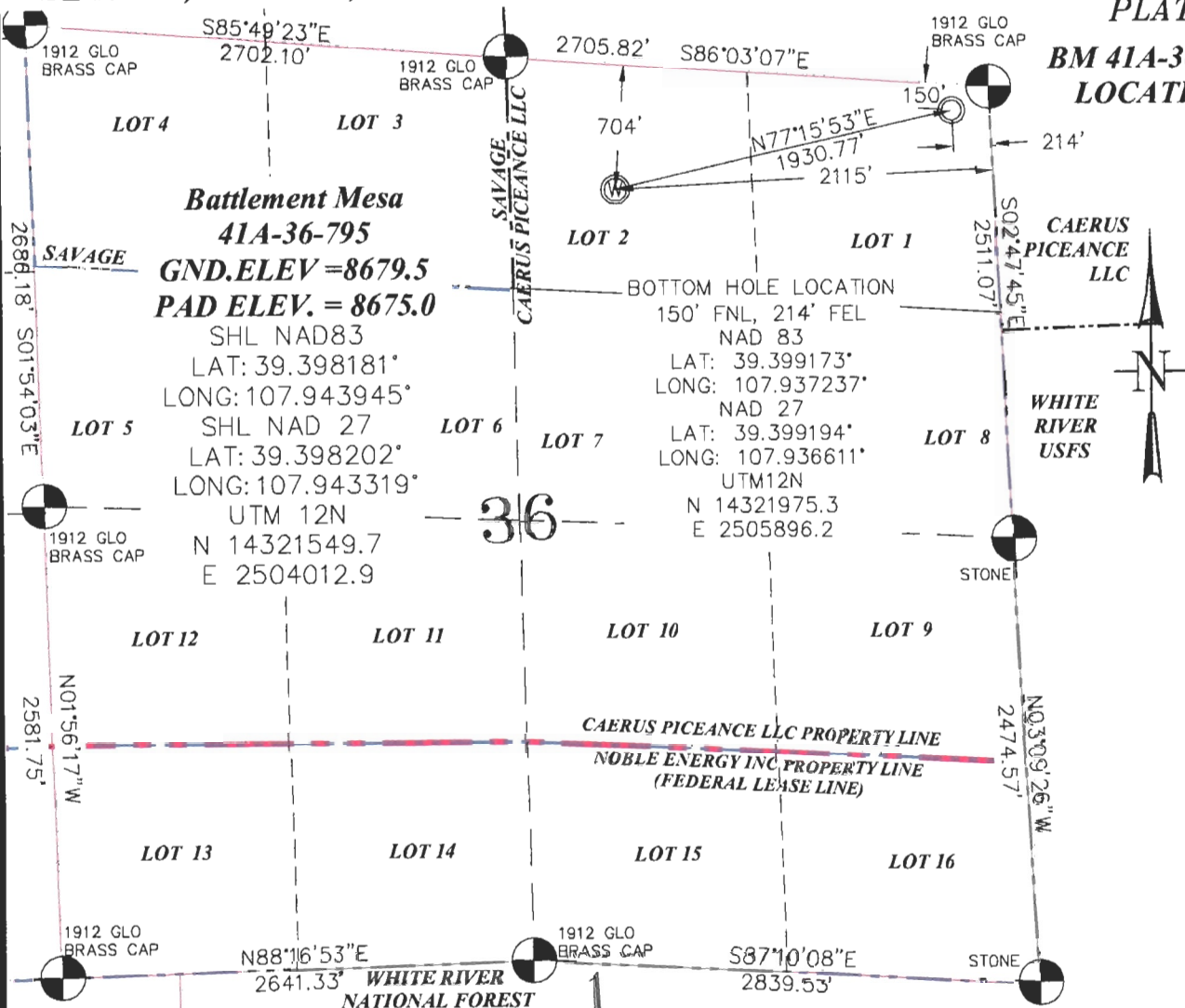


SEC. 36, T. 7 S., R. 95 W. OF THE 6TH P.M.

PLAT 1

BM 41A-36-795  
LOCATION



**Battlement Mesa**  
**41A-36-795**  
**GND.ELEV=8679.5**  
**PAD ELEV. = 8675.0**  
SHL NAD83  
LAT: 39.398181°  
LONG: 107.943945°  
SHL NAD 27  
LAT: 39.398202°  
LONG: 107.943319°  
UTM 12N  
N 14321549.7  
E 2504012.9

**BOTTOM HOLE LOCATION**  
150' FNL, 214' FEL  
NAD 83  
LAT: 39.399173°  
LONG: 107.937237°  
NAD 27  
LAT: 39.399194°  
LONG: 107.936611°  
UTM12N  
N 14321975.3  
E 2505896.2

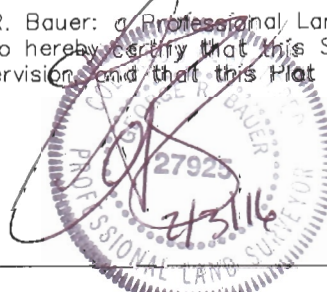
THIS WELL LOCATION PLAT WAS PREPARED FOR CAERUS PICEANCE LLC TO LOCATE THE BATTLEMENT MESA 41A-36-795 WELL, 704 FEET FROM THE NORTH LINE OF SAID SECTION AND 2115 FEET FROM THE EAST LINE OF LOT 2 (NW1/4NE1/4) OF SECTION 36, T. 7 S., R. 95 W. OF THE 6TH P.M. GARFIELD COUNTY, COLORADO.

### REFERENCE NOTES

- 1) T. 7 S., R. 95 W., 6TH P.M. GLO PLAT.
- 2) U.S.G.S. QUAD: PARACHUTE, CO
- 3) ELEVATIONS BASED ON N.A.V.D. 1988 LIDAR BASED CONTROL PT CP MON 8
- 4) LATITUDES AND LONGITUDES ARE BASED ON NAD 83, COLORADO CENTRAL ZONE.
- 5) GPS OPERATOR ROBERT WOOD, OBSERVED A PDOP OF 1.9.
- 6) ALL GPS OBSERVATIONS ARE IN COMPLIANCE WITH COGCC RULE NO. 215.
- 7) SURFACE AND BOTTOM HOLE LOCATIONS ARE MEASURED 90° FROM SECTION LINES.

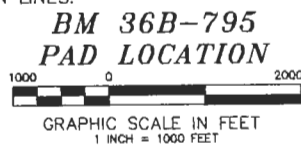
### SURVEYOR'S CERTIFICATE

I, George R. Bauer, a Professional Land Surveyor in the State of Colorado do hereby certify that this Survey was made under my direct supervision and that this Plat represents said Survey.



### -LEGEND-

- FIELD SURVEYED SECTION CORNER LOCATIONS
- FIELD SURVEYED WELL SHL LOCATION
- CALCULATED BOTTOM HOLE LOCATION



**BM 36B-795**  
**PAD LOCATION**  
**Caerus Piceance LLC**



### WELL LOCATION PLAT

CONSTRUCTION SURVEYS, INC.  
0012 SUNRISE BLVD. SILT, CO  
81652 (970)876-5753

SURVEY BY: REW 12/10/15	PDOP: 1.9
DRAWN BY: REW 02/02/16	DWG: CAERUS\BM36B-795PLAT_1
REVISED:	