



Premier Directional Drilling
12941 North Freeway Suite 400
Houston, Texas 77060
PH: #281-673-4000

Meguire 28C-16HZ
Scale 5":100' - MD
10/19/2015 9:28 AM

Oper. Company: Anadarko Petroleum Corporation

State: Colorado

Well: Meguire 28C-16HZ

County: Weld County

Field: Wattenburg

Country: USA

Rig: Precision 462

Location: Megurie 6-21HZ PAD

Well ID: 0512341970000

Start Date: 10/16/2015 09:00:00

Job Number: R15402

End Date: 10/18/2015 12:27:15

Notes: LWD Recorded Mode Log
Gamma Correction Determined by Pipe ID & OD, Mud Weight & Bit Size

Latitude: 40.124762

Elev KB: 20'

Longitude: -104.670536

Elev DF: 4908'

Elev GL: 4888'

Notes: Datum: NAD1983 Map Zone: 13N (108 W to 102 W) Total Correction: 8.00° Grid Convergence: 0.21° (True North)

Operator 1: David Clancy

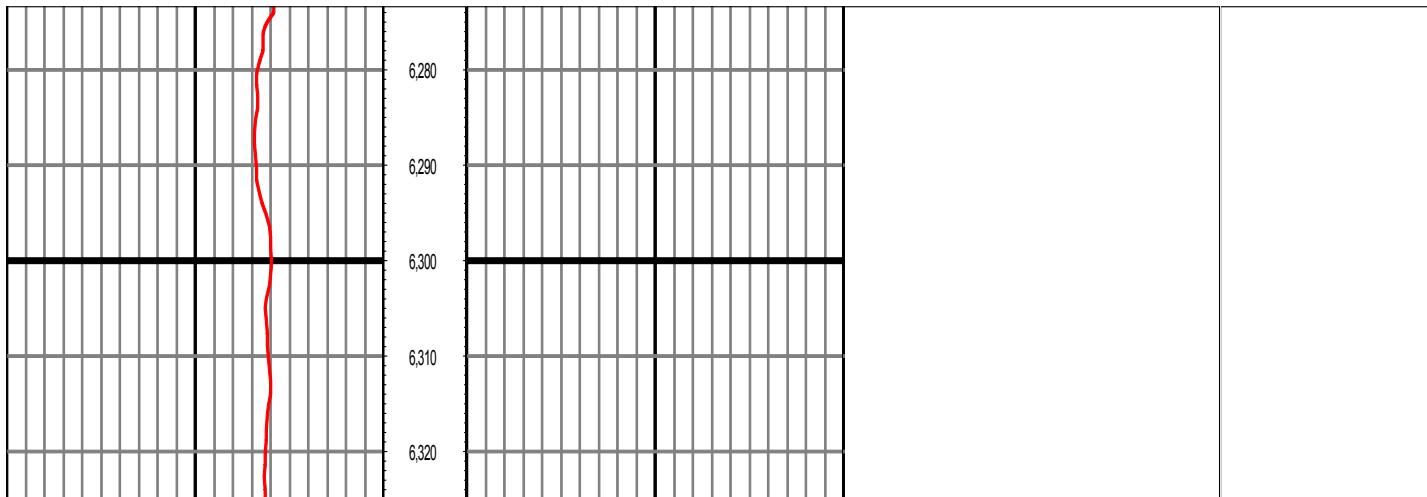
Operator 2: Justin Wallace

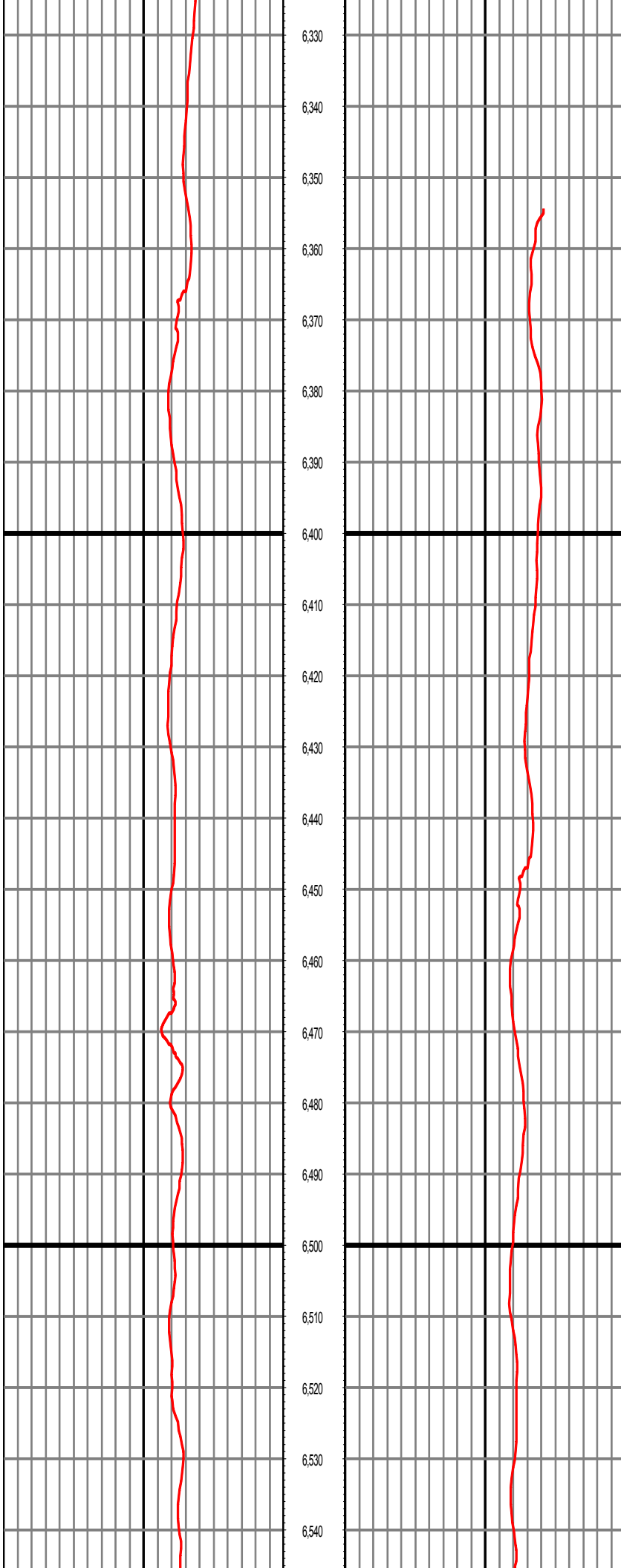
Notes: Smoothing: 7 Gap Fill: 10 Tool Type: Mud Pulse Calculation Method: Minimum Curvature

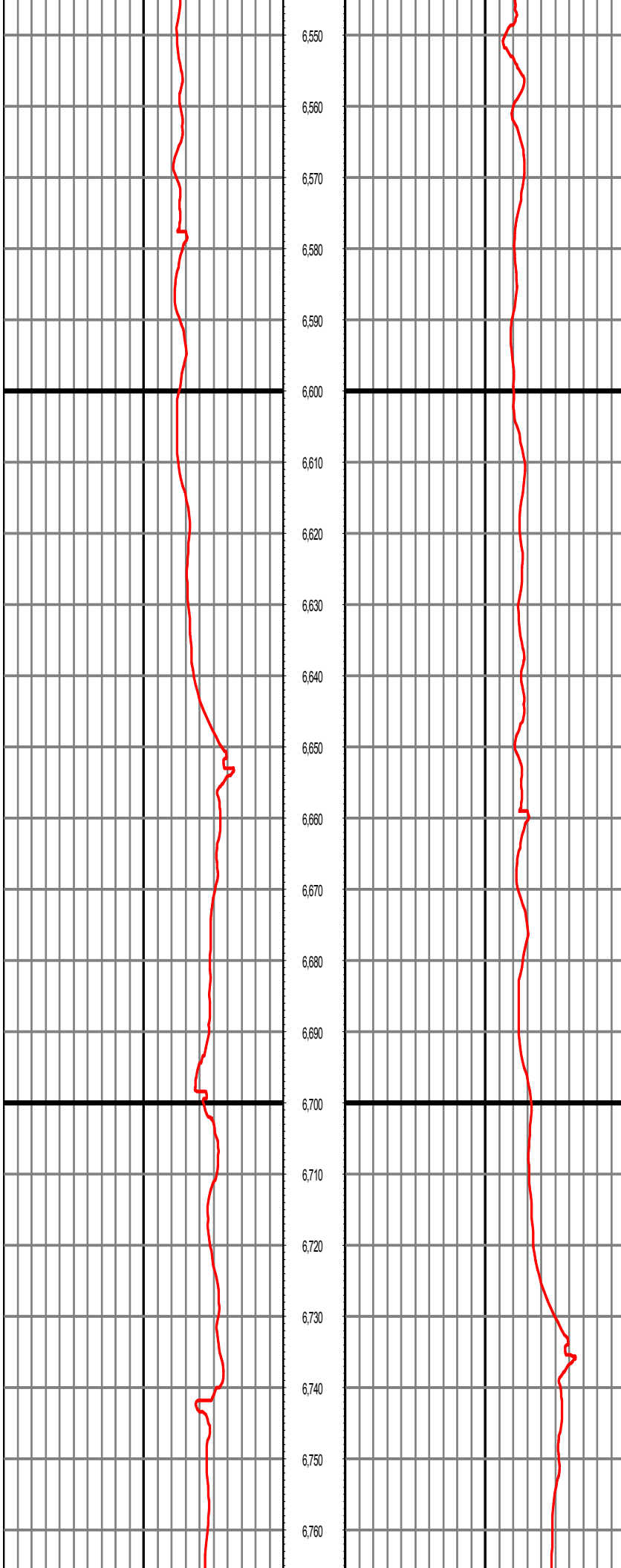
Tool Run Data	Run #1	Run #2	Run #3	Run #4	Run #5
Tool S/N	137				
Bit Size	8.5				
Cal Factor	1.06				
Survey Offset:	69.00				
Gamma Offset	64.04				
Resistivity Offset	0.00				
Start Depth	6354.00				
StartDate	10/16/2015				
StartTime	09:00				
EndDepth	15363.00				
EndDate	10/18/2015				
EndTime	12:27				
Hole Data			Casing Data		
Size	From	To	Size	From	To
8.5	1844.00	15363.00	9 5/8	0.00	1844.00

All interpretations are opinions based on inferences from electrical or other measurements and we cannot and do not guarantee the accuracy or correctness of any interpretation, and we shall not except in the case of gross or willful negligence on our part, be liable or responsible for any loss, cost damages or expenses incurred or sustained by anyone resulting from an interpretation made by any of our officers, agents, or employees.

0.00 GR RM(API) on TVD 200.00 MD 0.00 GR RM(API) on MD 200.00 Surveys (MD/INC/AZ/TVD/VS)
200.00 2 400.00 FT 200.00 2 400.00

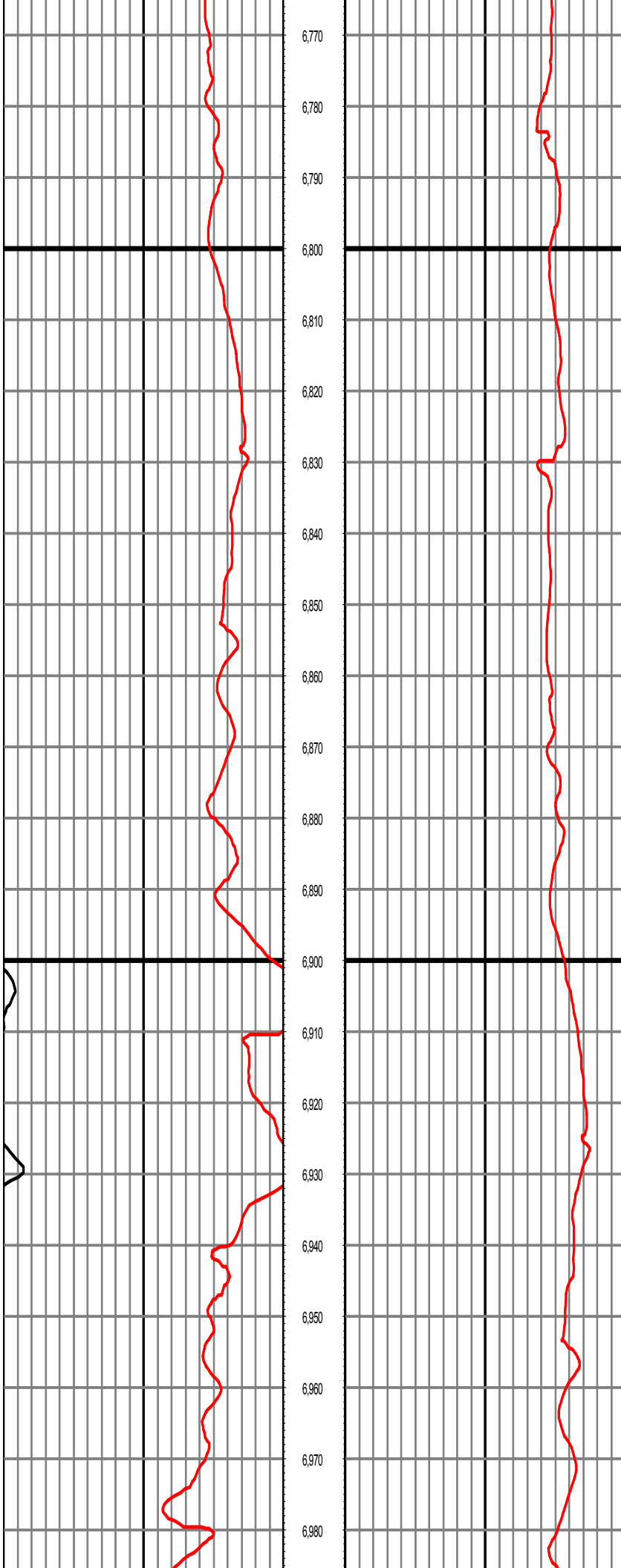






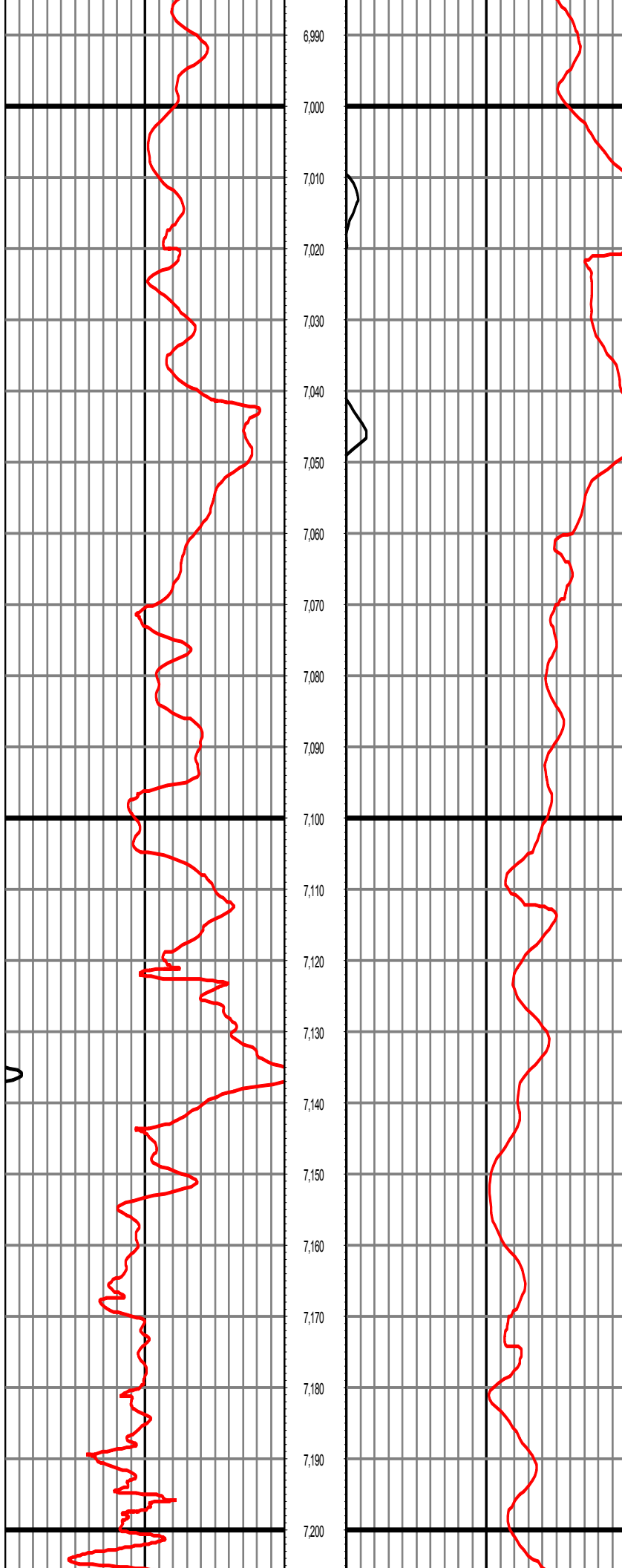
MD: 6636.00 INC: 1.00 AZ: 11.60 TVD: 6554.86 VS: -834.51

MD: 6730.00 INC: 14.20 AZ: 7.10 TVD: 6647.83 VS: -822.20



MD: 6825.00 INC: 24.10 AZ: 1.80 TVD: 6737.46 VS: -791.16

MD: 6920.00 INC: 25.10 AZ: 359.50 TVD: 6823.84 VS: -751.62



MD: 7015.00 INC: 35.10 AZ: 2.40 TVD: 6905.93 VS: -704.06

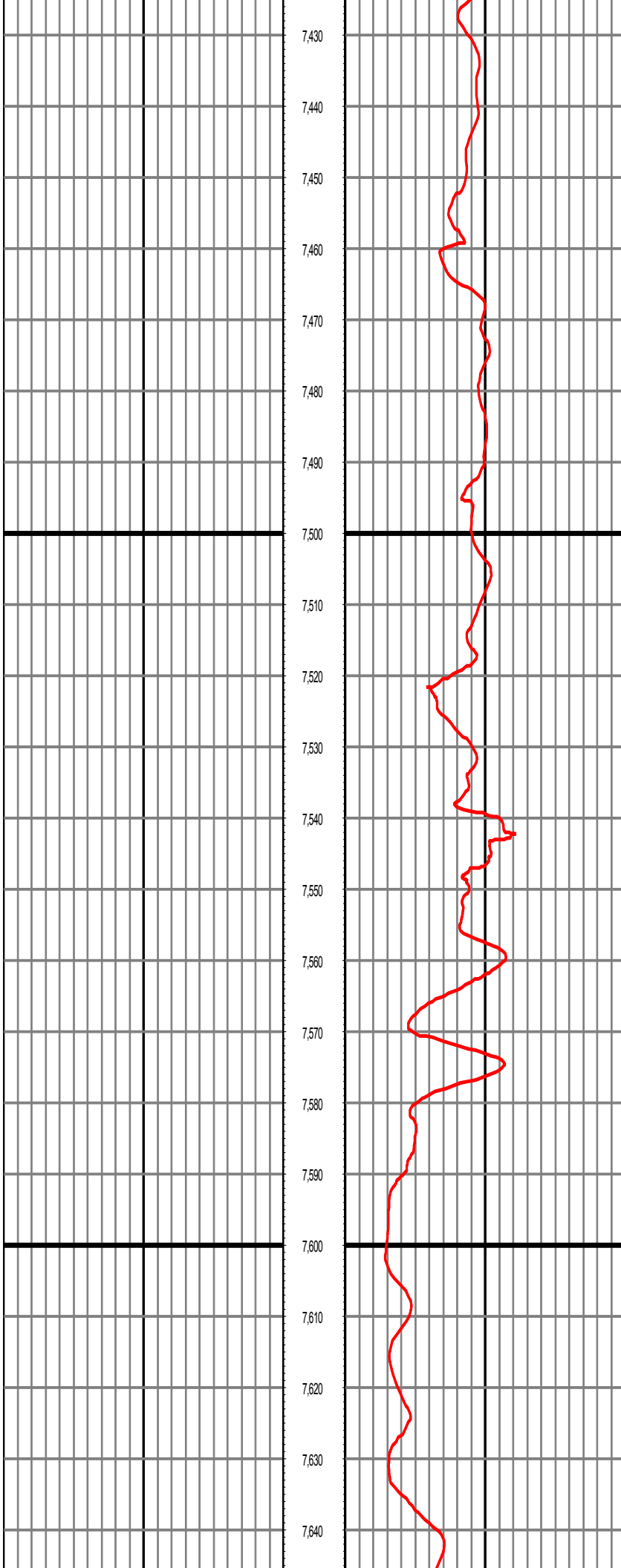
MD: 7111.00 INC: 46.10 AZ: 2.80 TVD: 6978.71 VS: -641.73

MD: 7206.00 INC: 52.20 AZ: 3.60 TVD: 7040.82 VS: -570.00

MD: 7206.00 INC: 52.20 AZ: 3.60 TVD: 7040.82 VS: -570.00

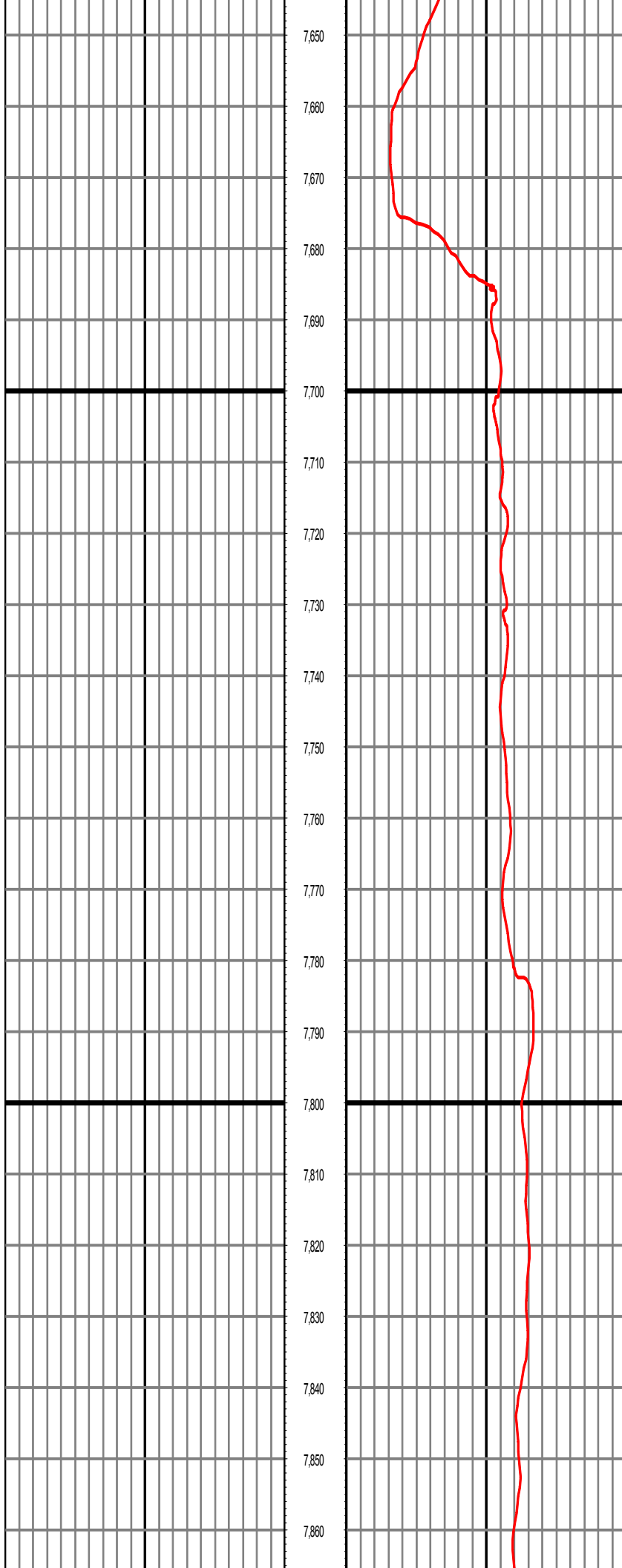
MD: 7300.00 INC: 57.10 AZ: 3.70 TVD: 7095.19 VS: -493.49

MD: 7396.00 INC: 63.90 AZ: 1.40 TVD: 7142.44 VS: -410.06



MD: 7491.00 INC: 69.80 AZ: 359.20 TVD: 7179.77 VS: -322.75

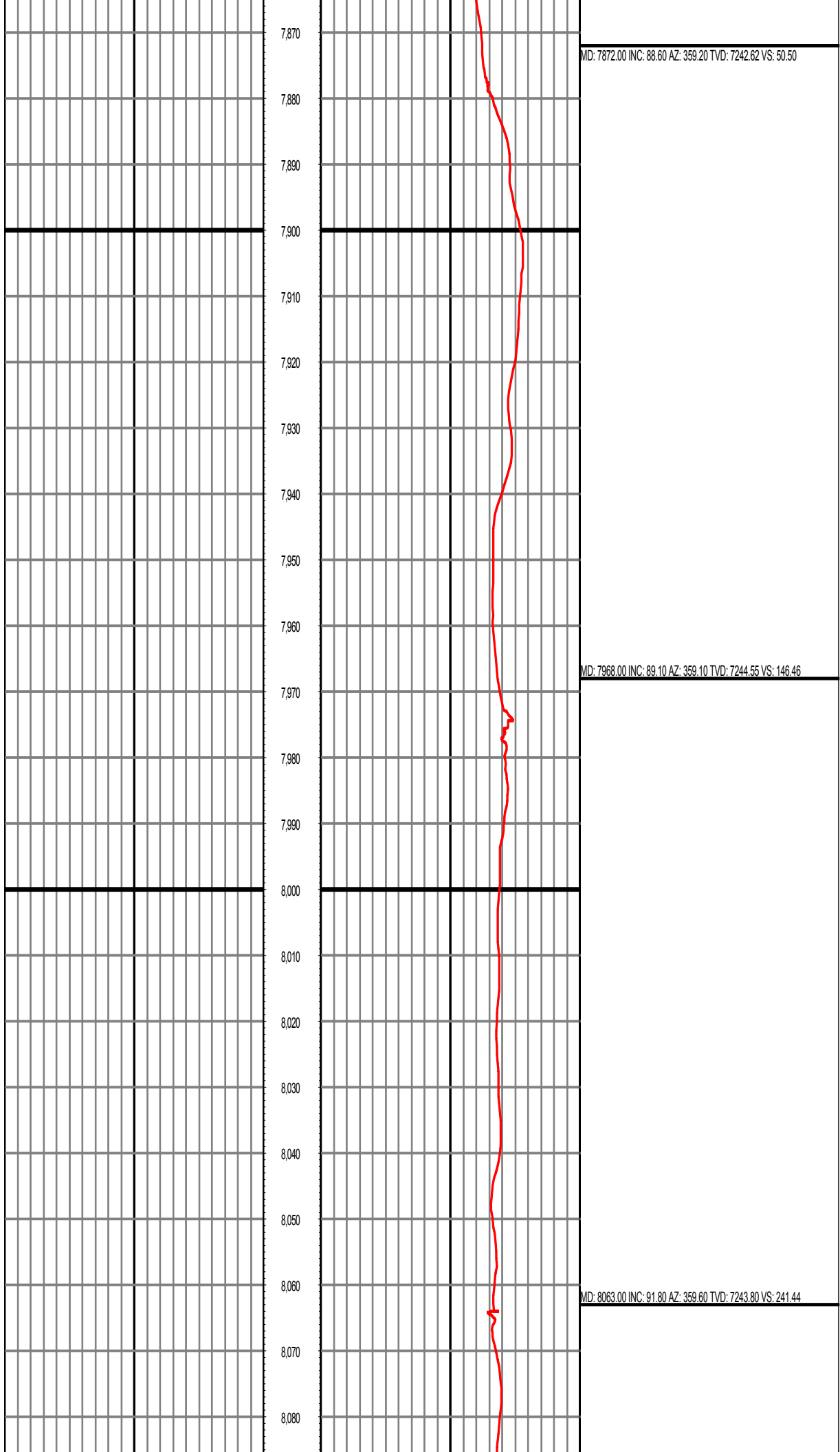
MD: 7586.00 INC: 73.70 AZ: 357.50 TVD: 7209.52 VS: -232.60

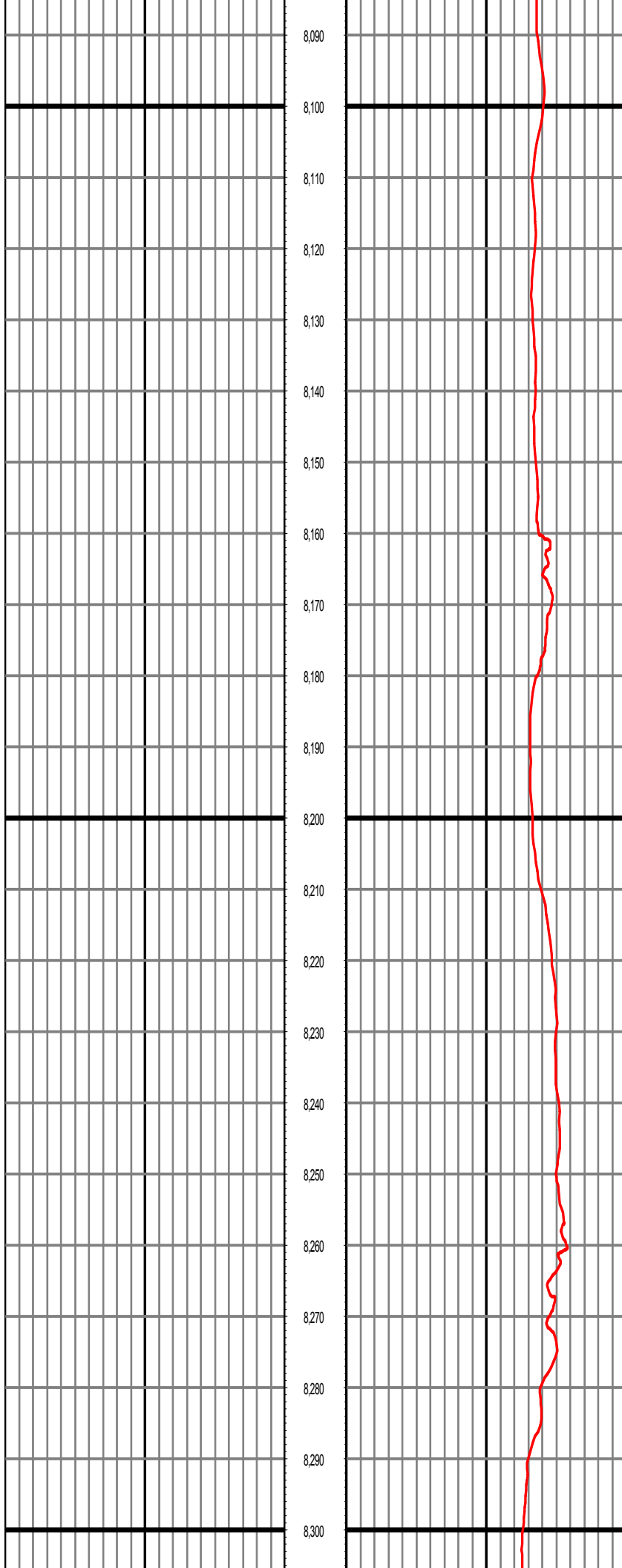


7,650
7,660
7,670
7,680
7,690
7,700
7,710
7,720
7,730
7,740
7,750
7,760
7,770
7,780
7,790
7,800
7,810
7,820
7,830
7,840
7,850
7,860

MD: 7682.00 INC: 81.90 AZ: 359.20 TVD: 7229.79 VS: -138.91

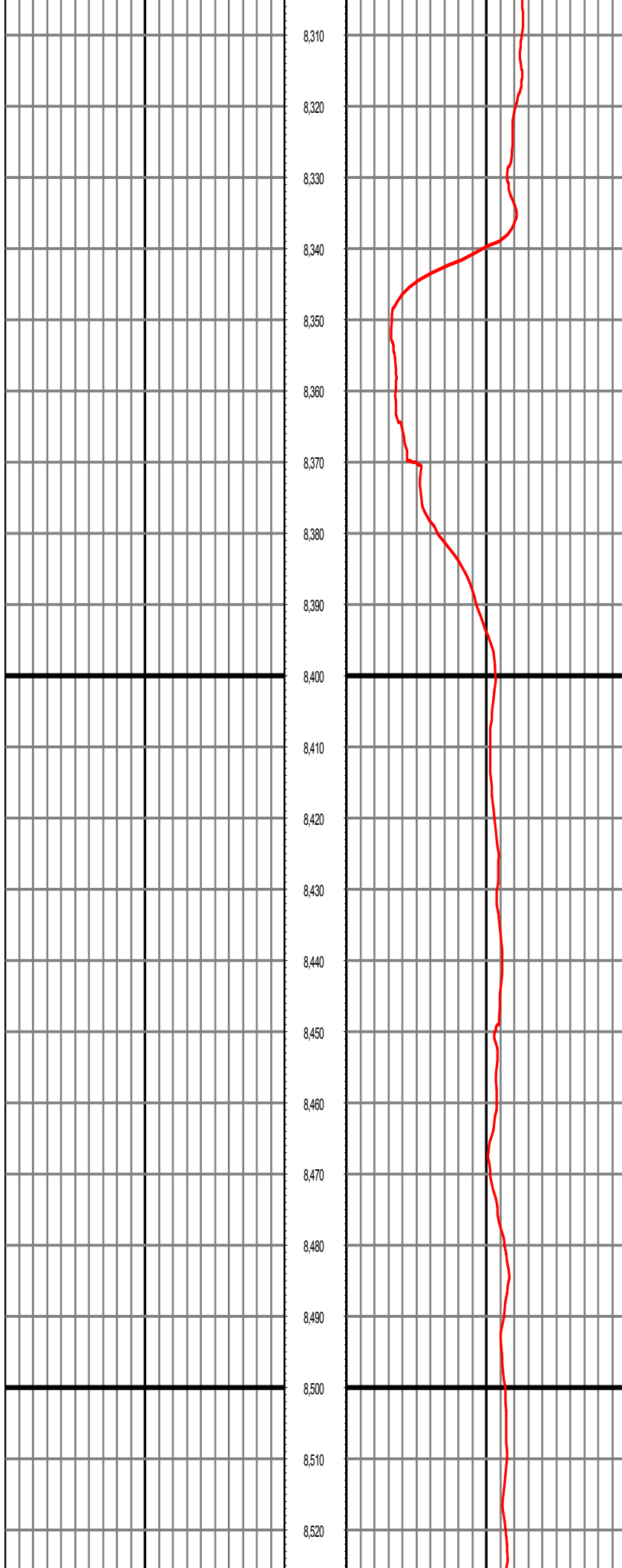
MD: 7777.00 INC: 87.00 AZ: 358.90 TVD: 7238.98 VS: -44.40

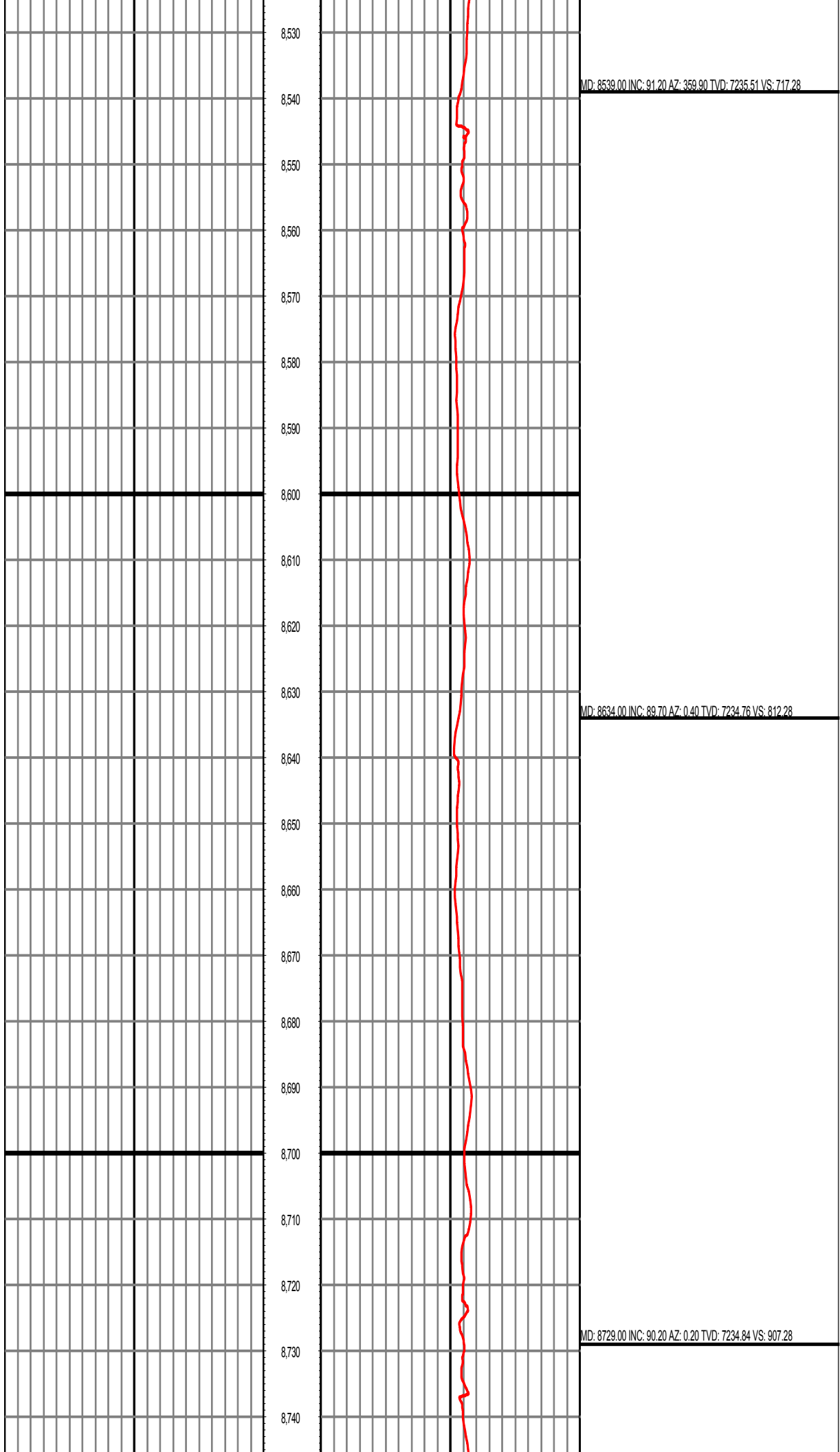


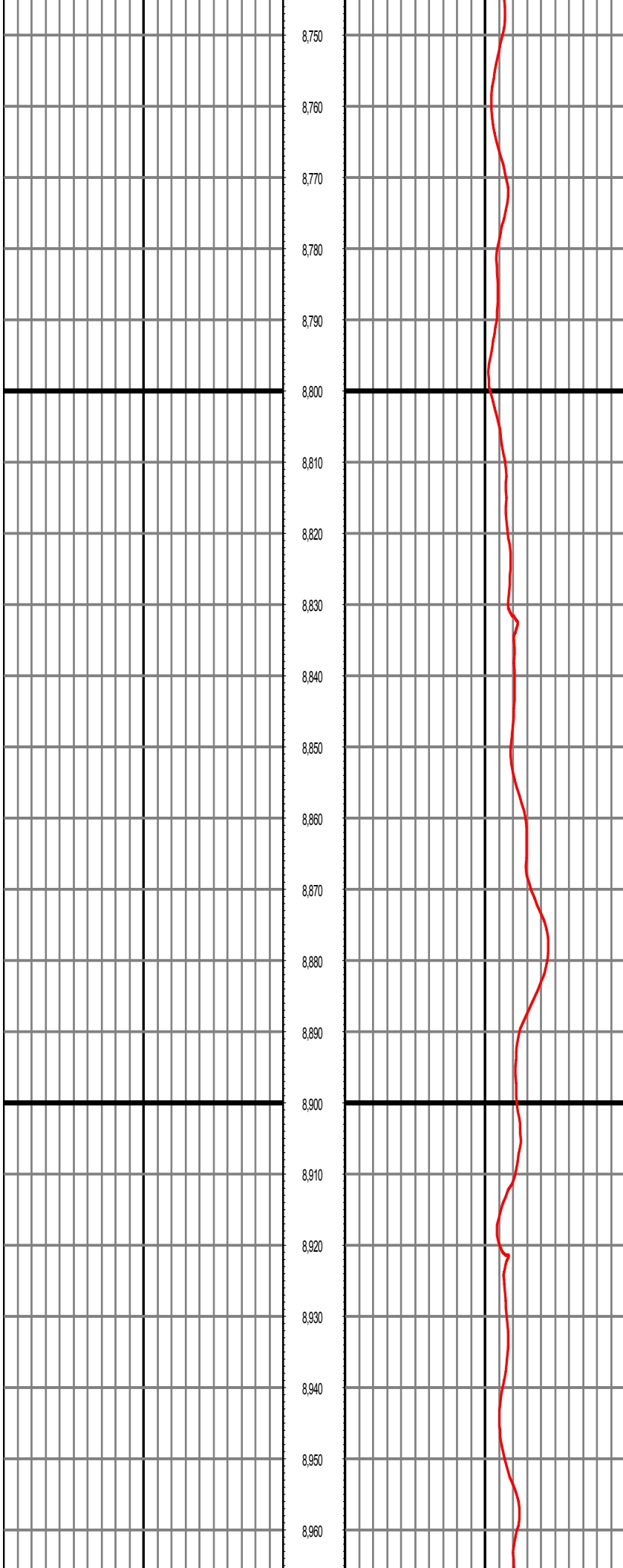


MD: 8158.00 INC: 92.60 AZ: 359.20 TVD: 7240.16 VS: 336.36

MD: 8253.00 INC: 90.80 AZ: 359.50 TVD: 7237.34 VS: 431.30

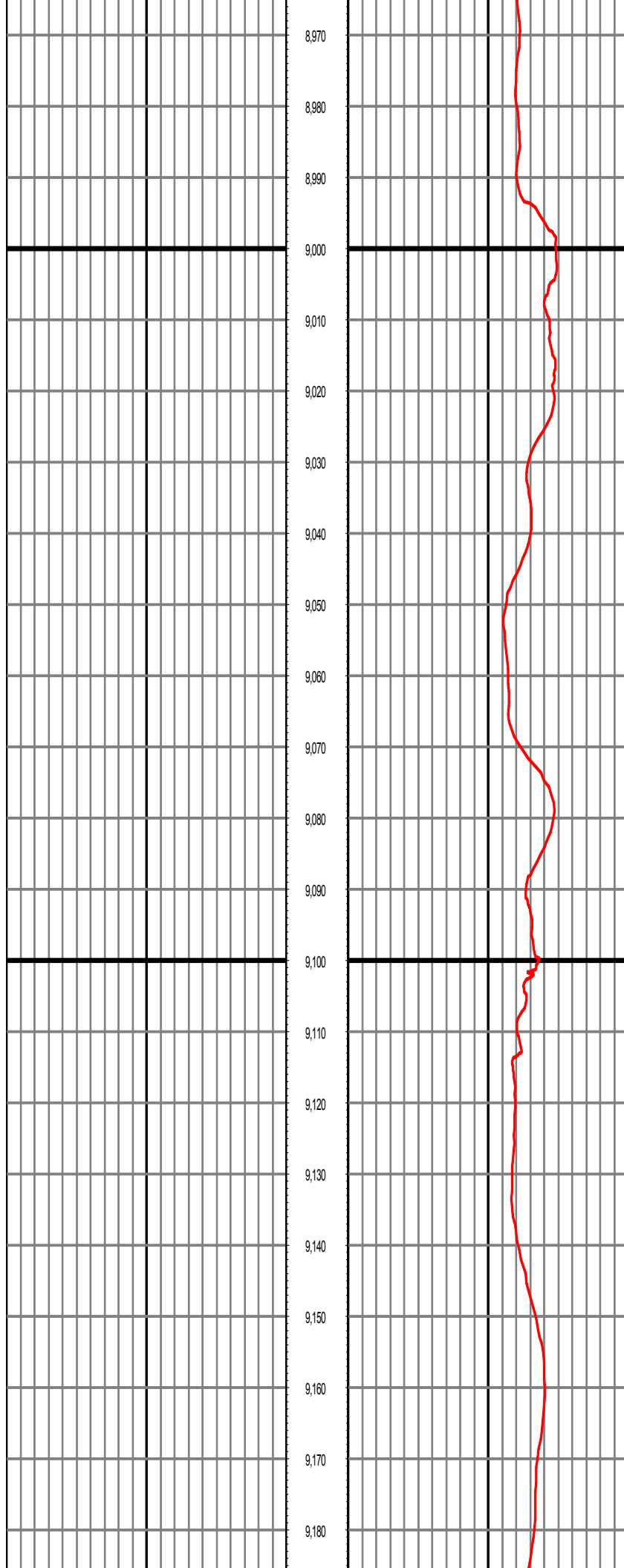






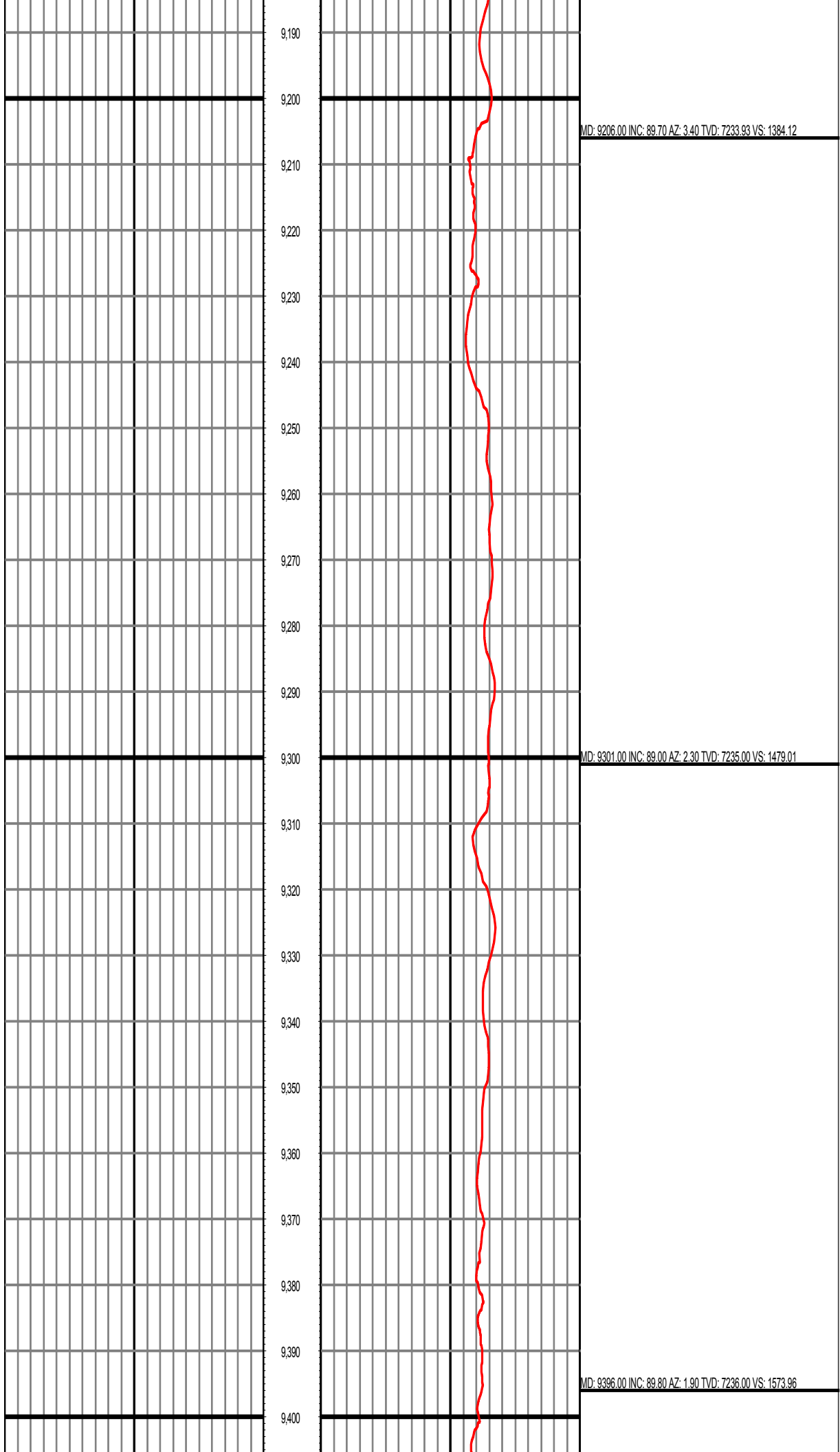
MD: 8824.00 INC: 88.90 AZ: 0.40 TVD: 7235.59 VS: 1002.27

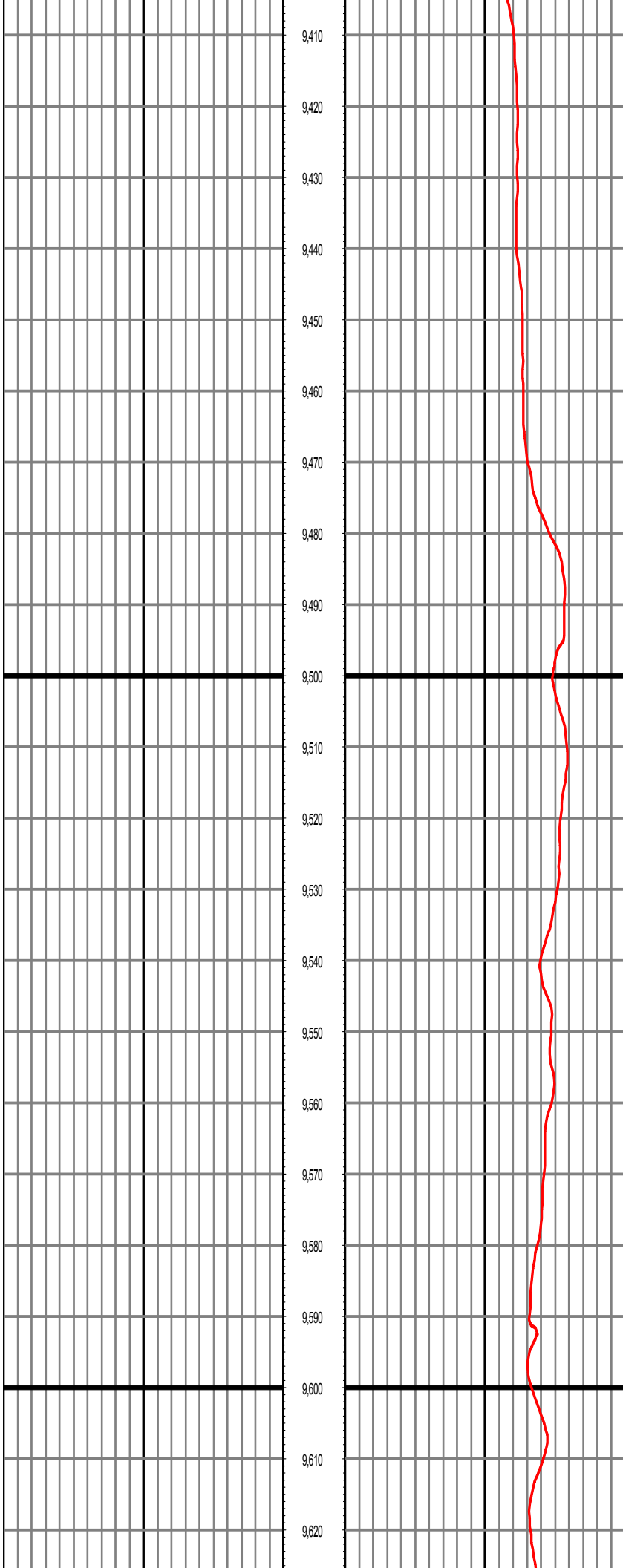
MD: 8920.00 INC: 89.50 AZ: 359.90 TVD: 7236.93 VS: 1098.26



MD: 9015.00 INC: 91.00 AZ: 0.20 TVD: 7236.52 VS: 1193.26

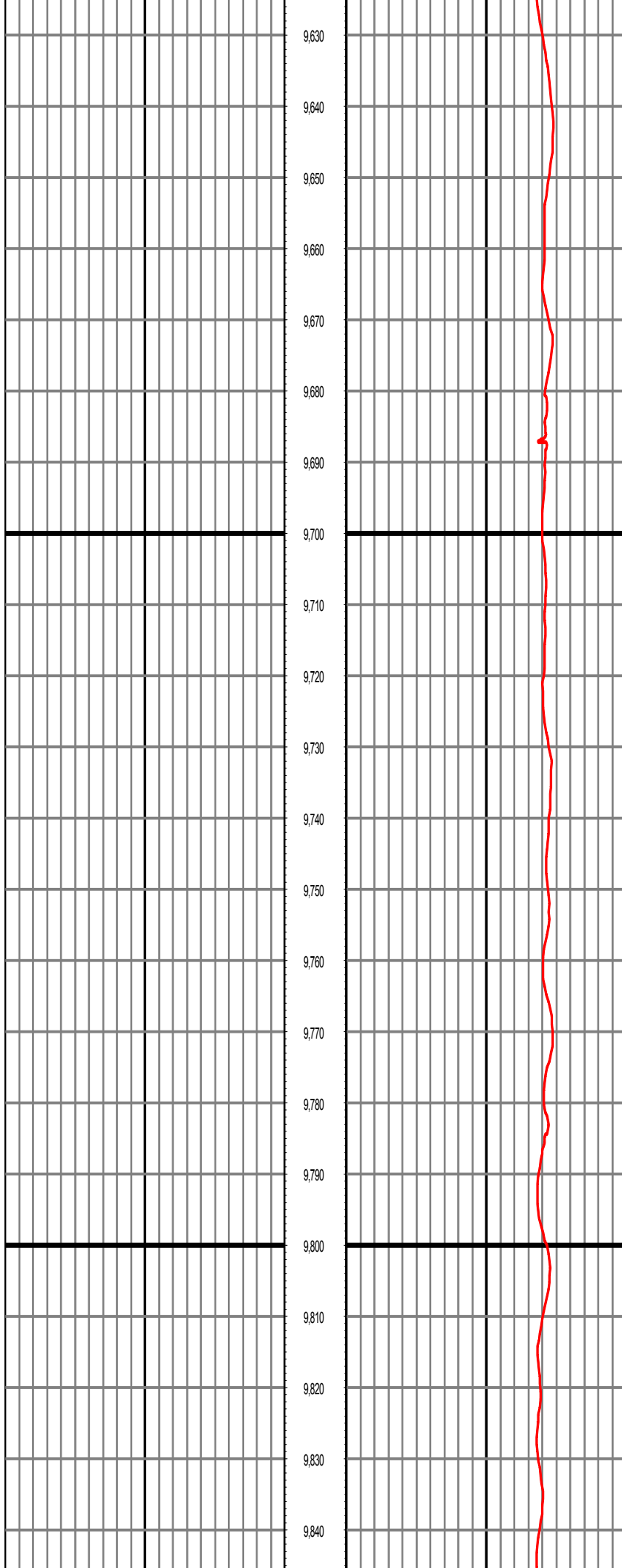
MD: 9111.00 INC: 91.20 AZ: 2.30 TVD: 7234.67 VS: 1289.22





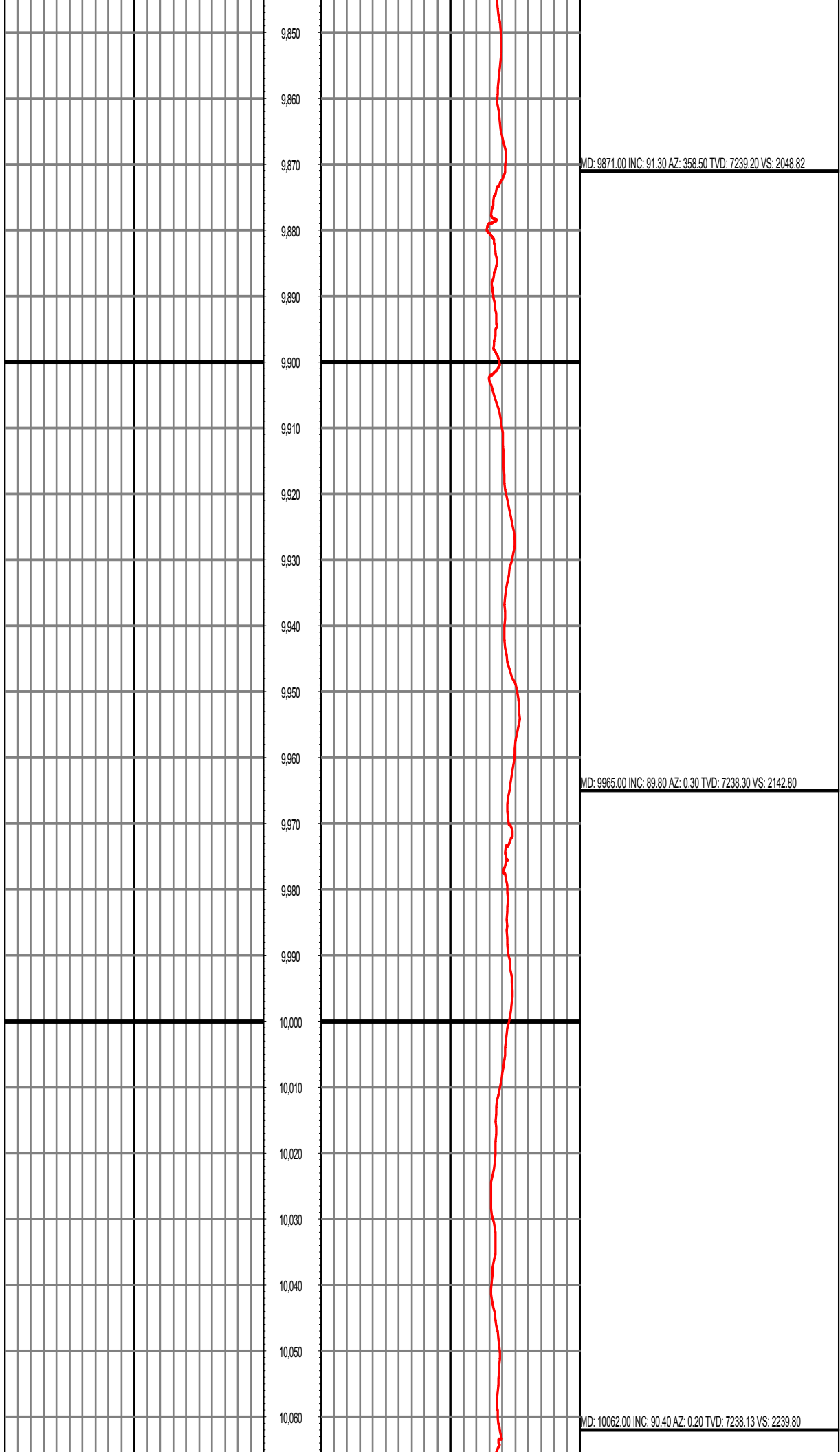
MD: 9490.00 INC: 88.20 AZ: 359.50 TVD: 7237.64 VS: 1667.93

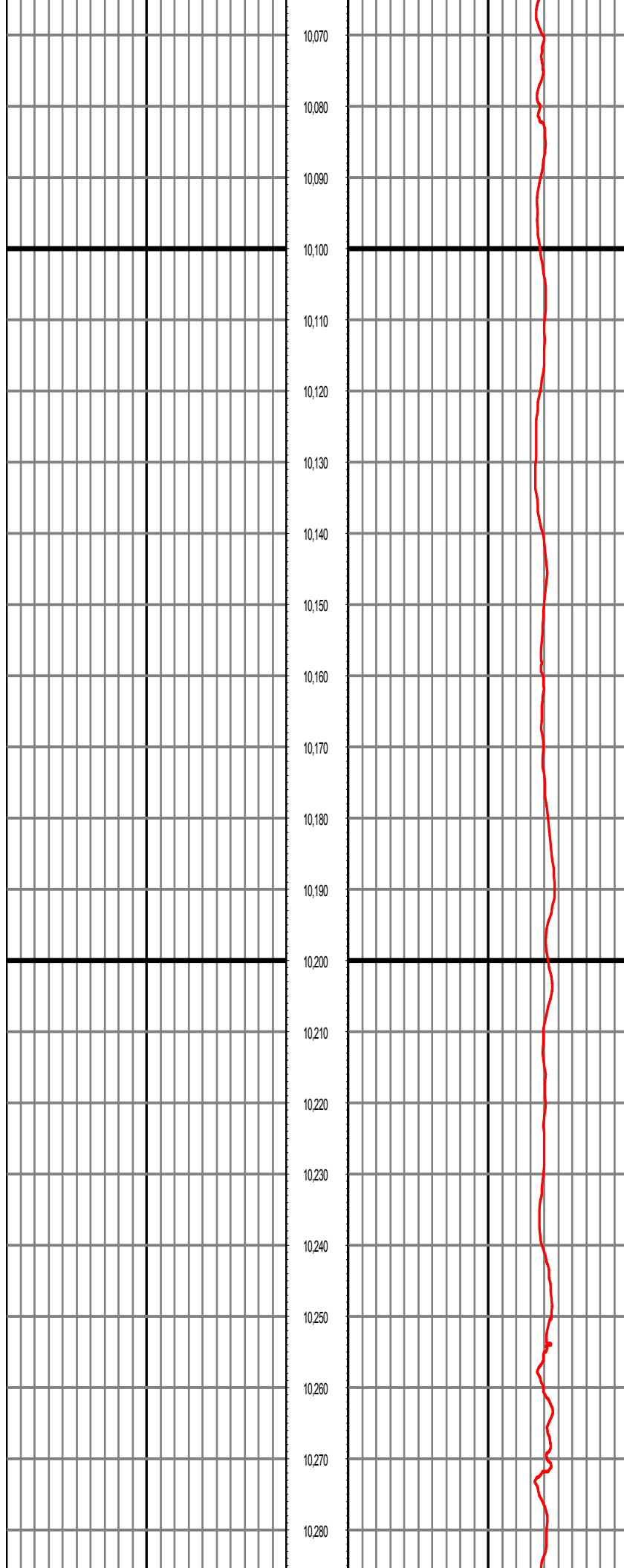
MD: 9585.00 INC: 89.10 AZ: 359.60 TVD: 7239.88 VS: 1762.90



MD: 9680.00 INC: 89.70 AZ: 359.40 TVD: 7240.87 VS: 1857.88

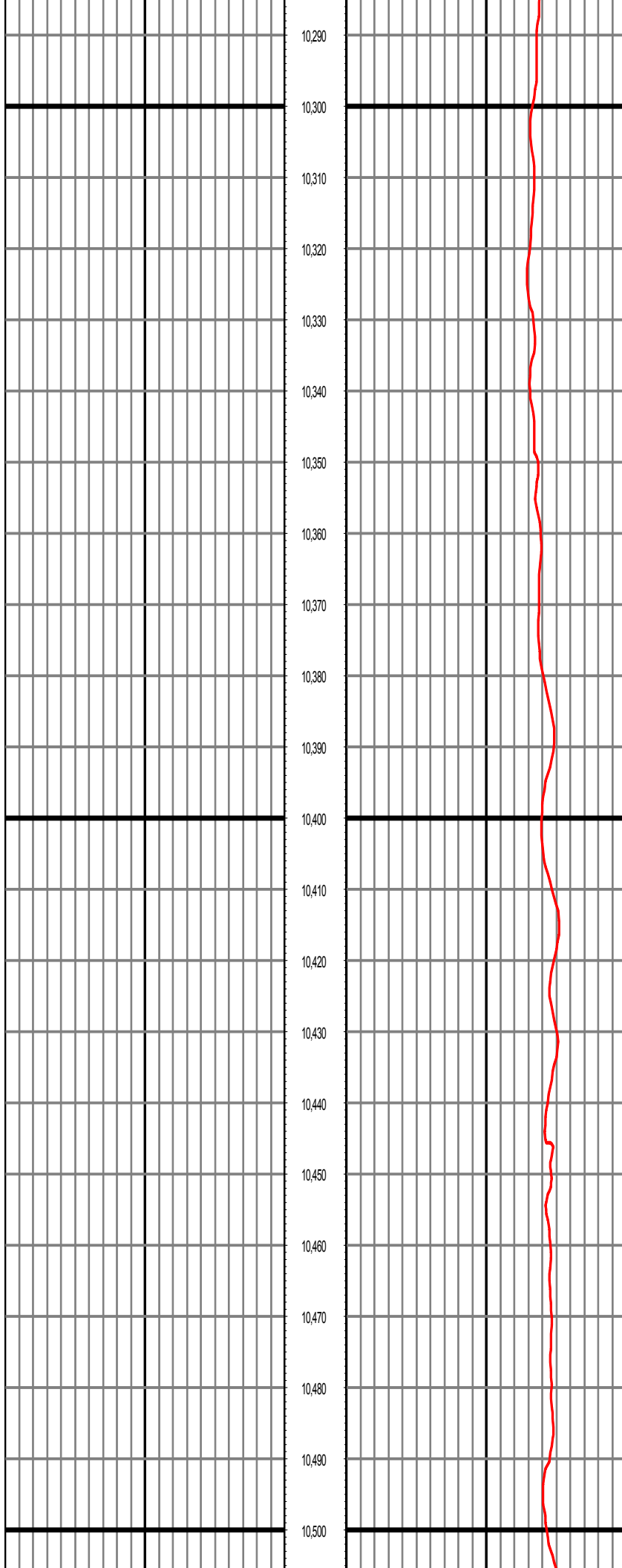
MD: 9775.00 INC: 90.50 AZ: 359.20 TVD: 7240.71 VS: 1952.87





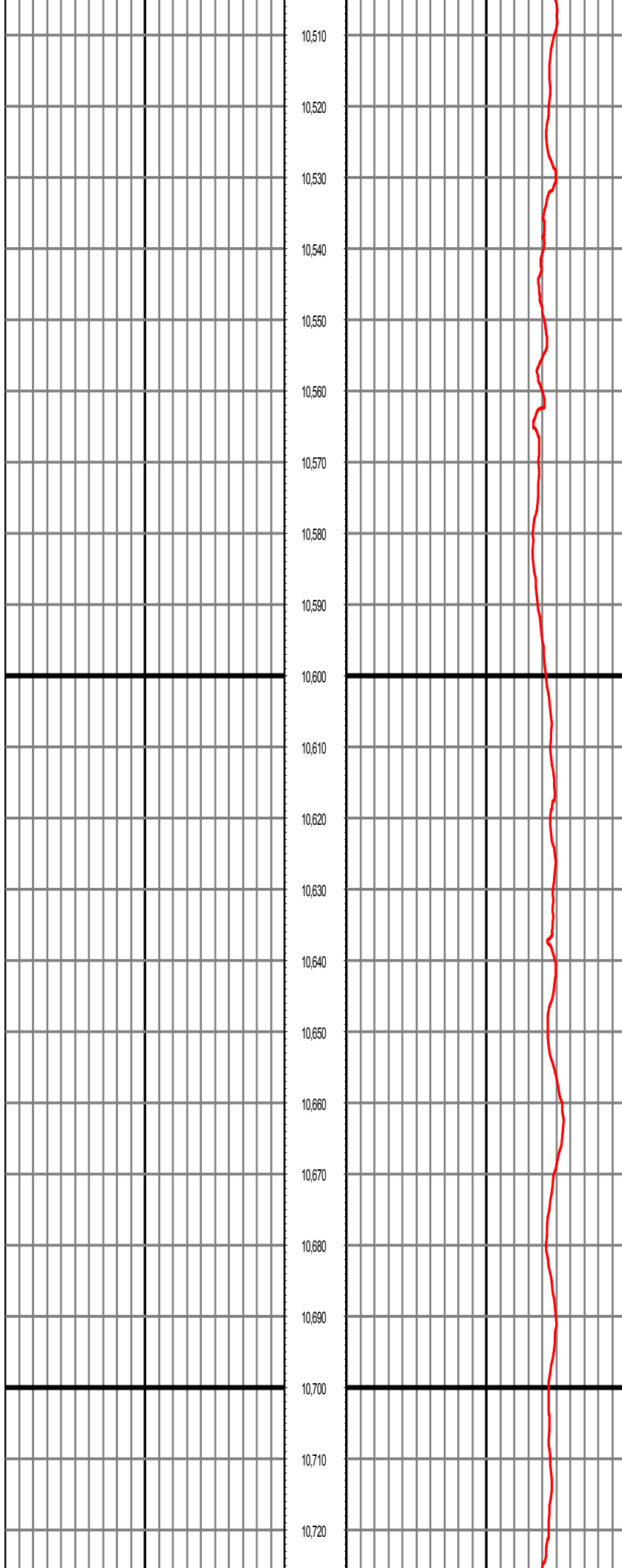
MD: 10156.00 INC: 90.00 AZ: 1.80 TVD: 7237.80 VS: 2333.79

MD: 10251.00 INC: 90.80 AZ: 1.40 TVD: 7237.13 VS: 2428.76



MD: 10346.00 INC: 89.30 AZ: 2.10 TVD: 7237.05 VS: 2523.73

MD: 10441.00 INC: 90.00 AZ: 1.80 TVD: 7237.63 VS: 2618.68



MD: 10536.00 INC: 91.40 AZ: 2.00 TVD: 7236.47 VS: 2713.64

MD: 10631.00 INC: 89.50 AZ: 359.50 TVD: 7235.73 VS: 2808.62

MD: 10726.00 INC: 90.10 AZ: 358.60 TVD: 7236.06 VS: 2903.59

MD: 10726.00 INC: 90.10 AZ: 358.60 TVD: 7236.06 VS: 2903.59

10,730

10,740

10,750

10,760

10,770

10,780

10,790

10,800

10,810

10,820

10,830

10,840

10,850

10,860

10,870

10,880

10,890

10,900

10,910

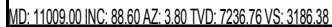
10,920

10,930

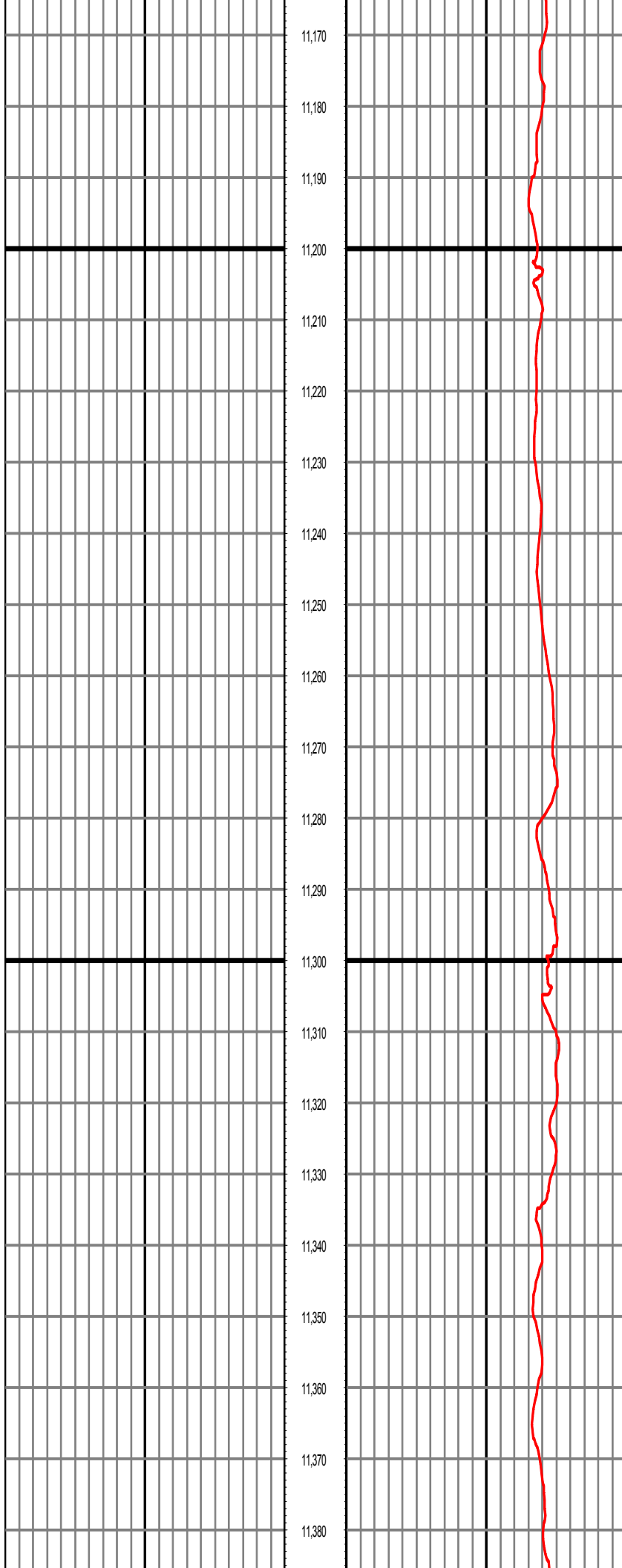
10,940

MD: 10821.00 INC: 91.00 AZ: 1.00 TVD: 7235.14 VS: 2998.58

MD: 10916.00 INC: 89.20 AZ: 2.90 TVD: 7234.98 VS: 3093.53

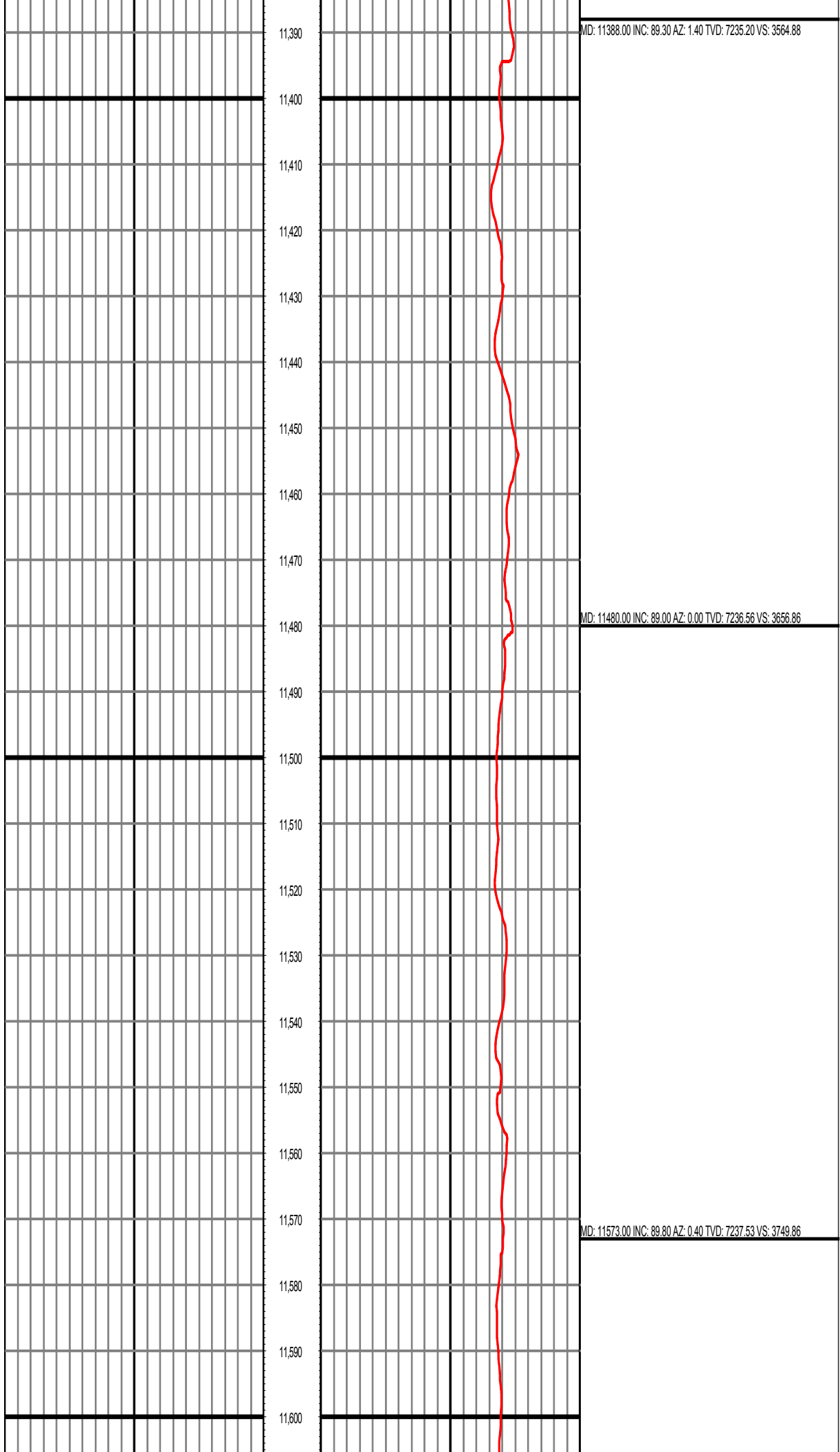


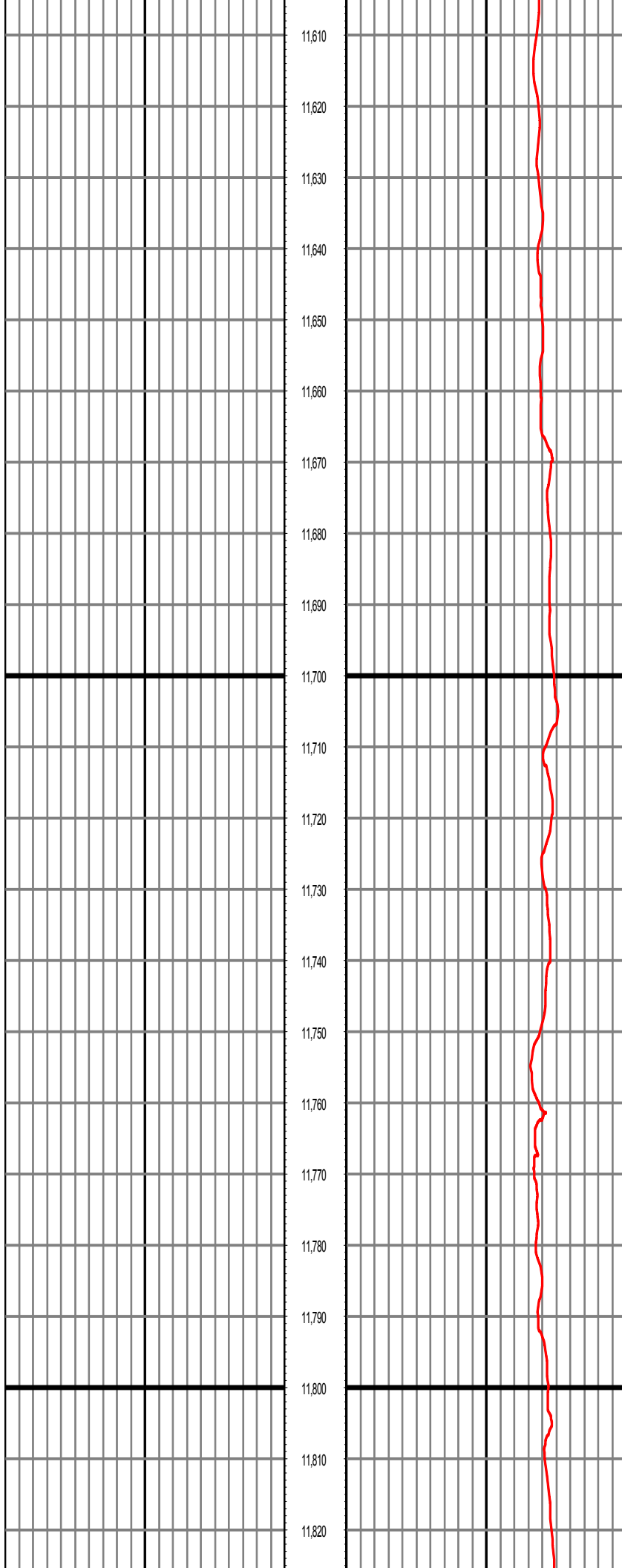
MD: 11104.00 INC: 89.70 AZ: 3.40 TVD: 7238.17 VS: 3281.20



MD: 11199.00 INC: 90.70 AZ: 2.80 TVD: 7237.84 VS: 3376.09

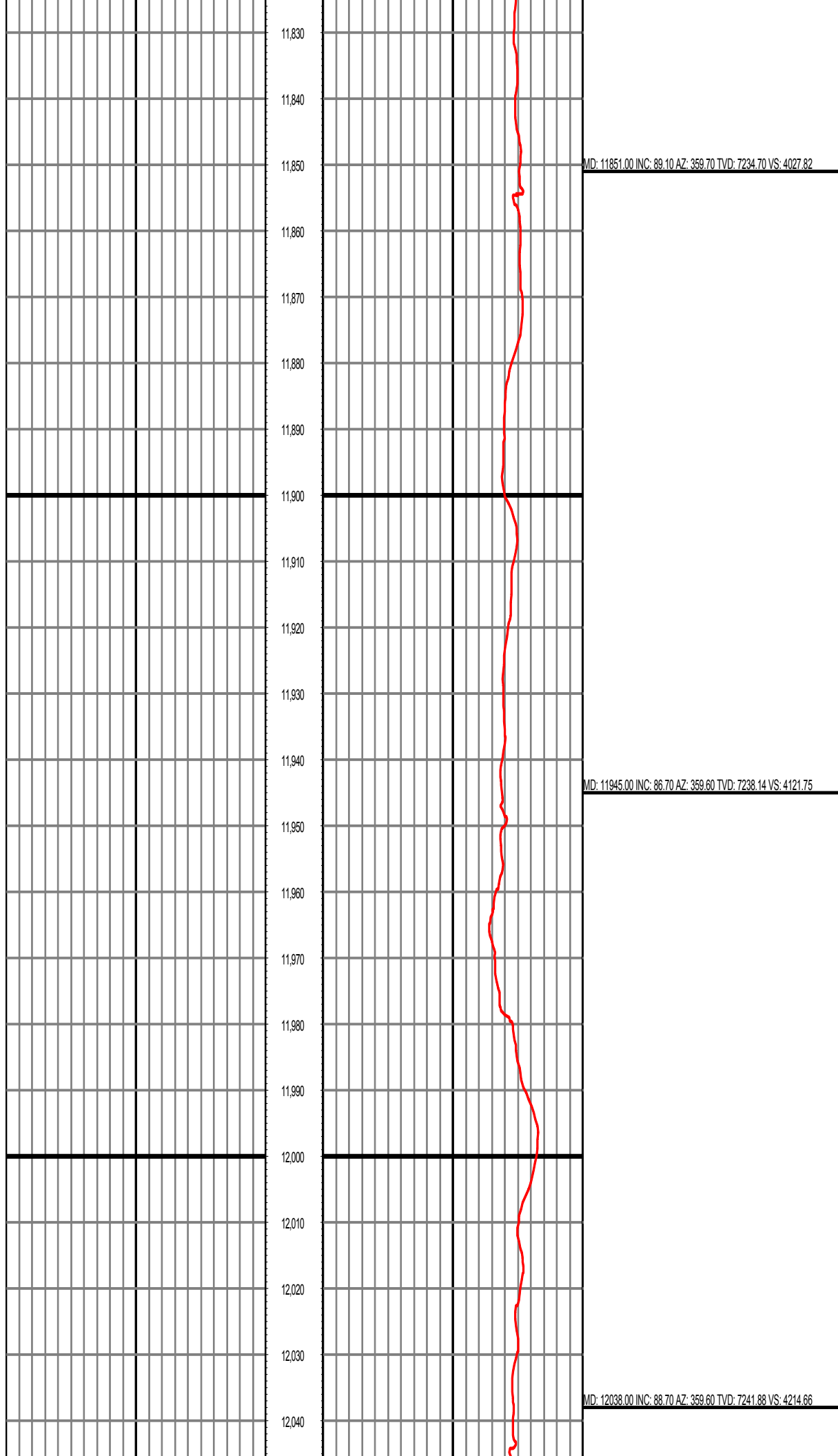
MD: 11294.00 INC: 91.60 AZ: 3.30 TVD: 7235.93 VS: 3470.95

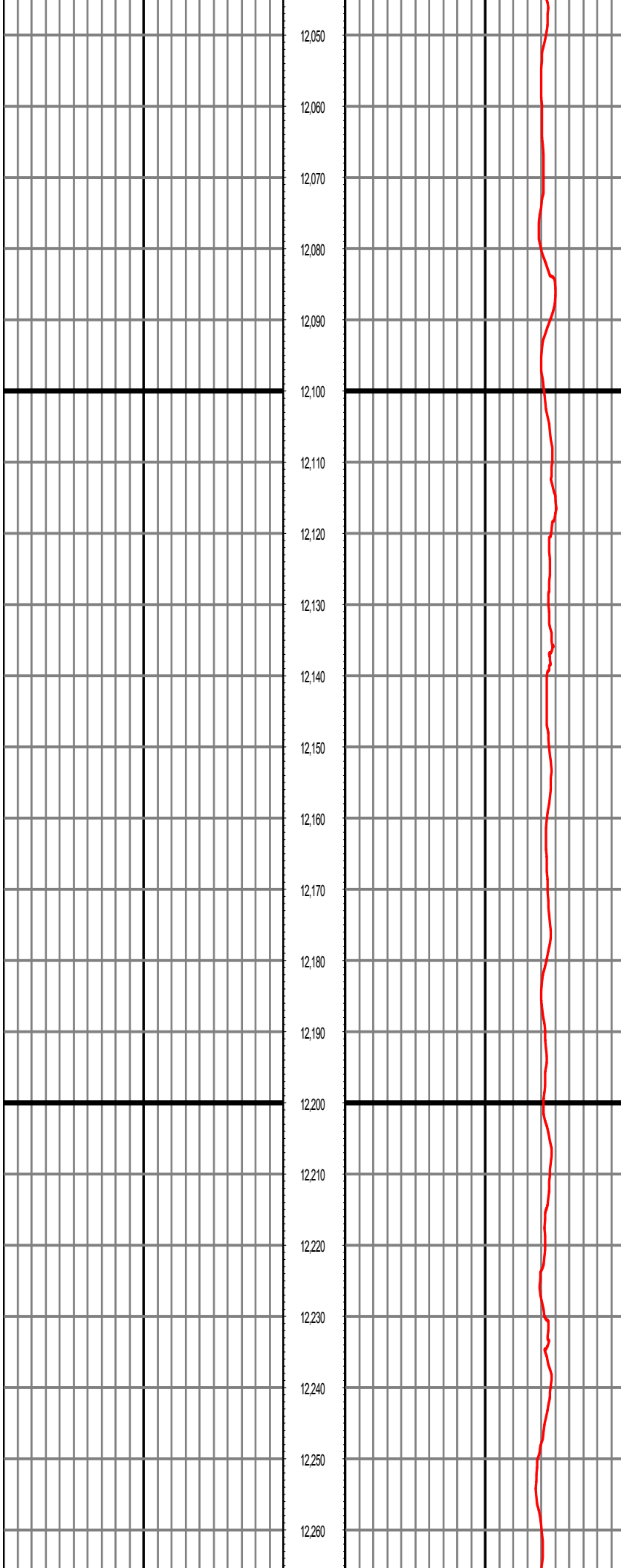




MD: 11665.00 INC: 90.80 AZ: 0.20 TVD: 7237.05 VS: 3841.85

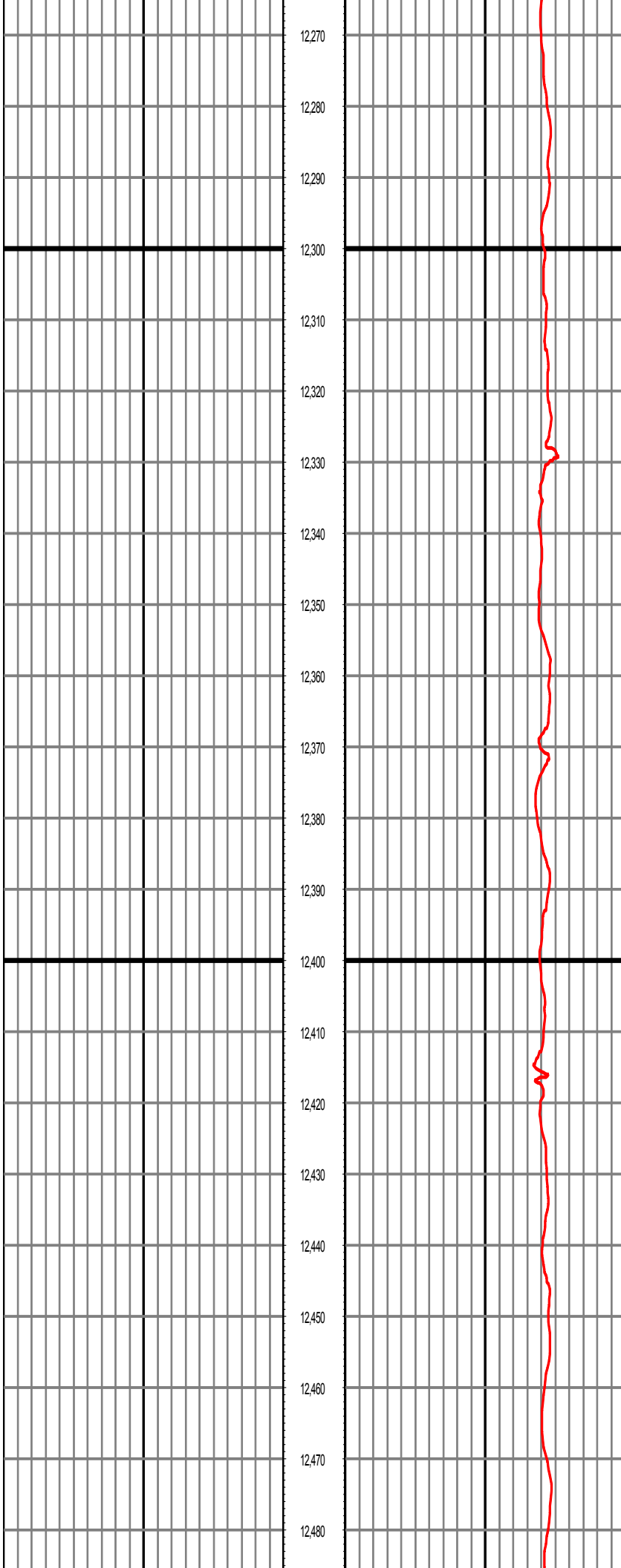
MD: 11758.00 INC: 91.50 AZ: 359.80 TVD: 7235.19 VS: 3934.83





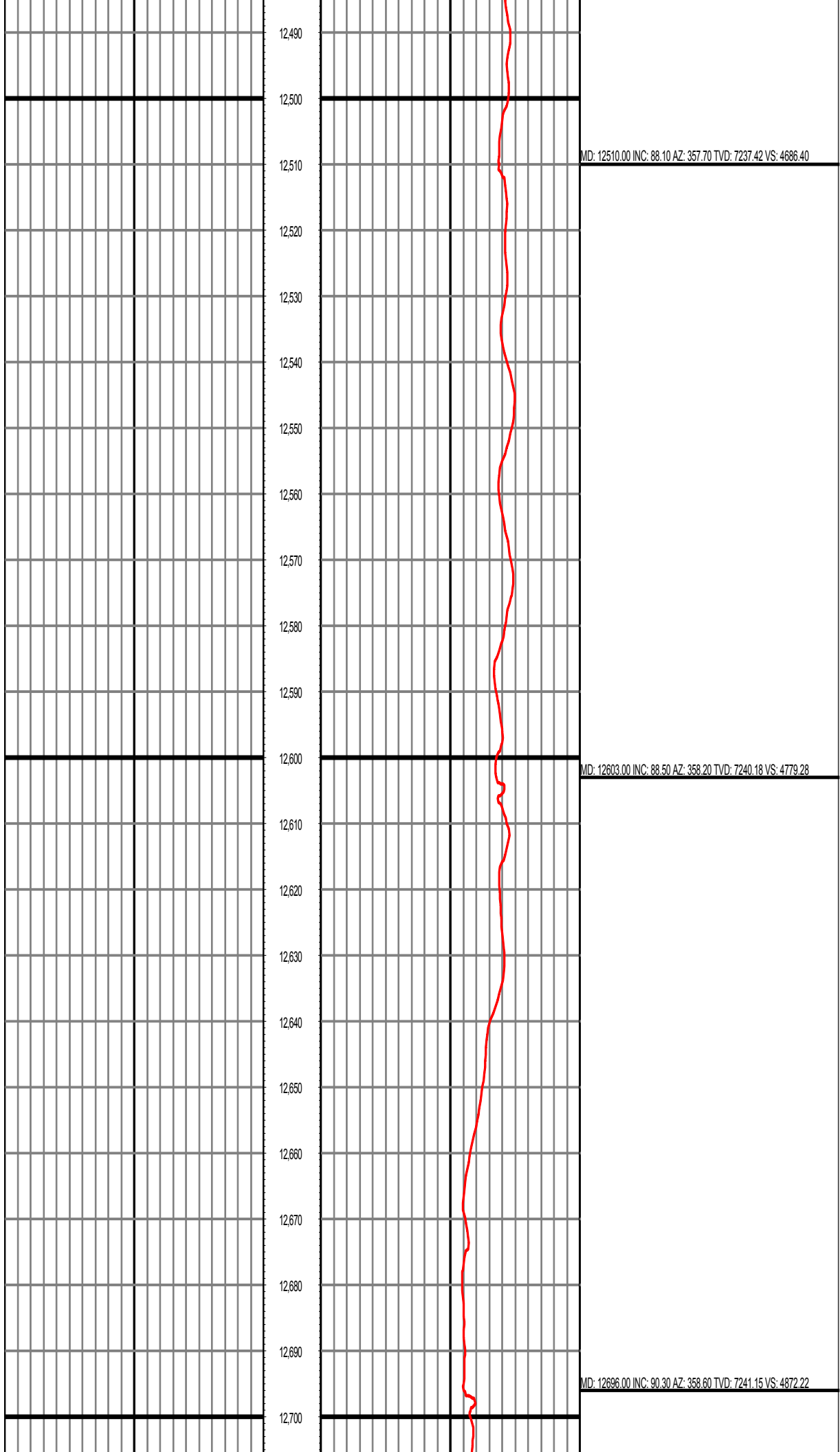
MD: 12133.00 INC: 90.00 AZ: 359.70 TVD: 7242.95 VS: 4309.65

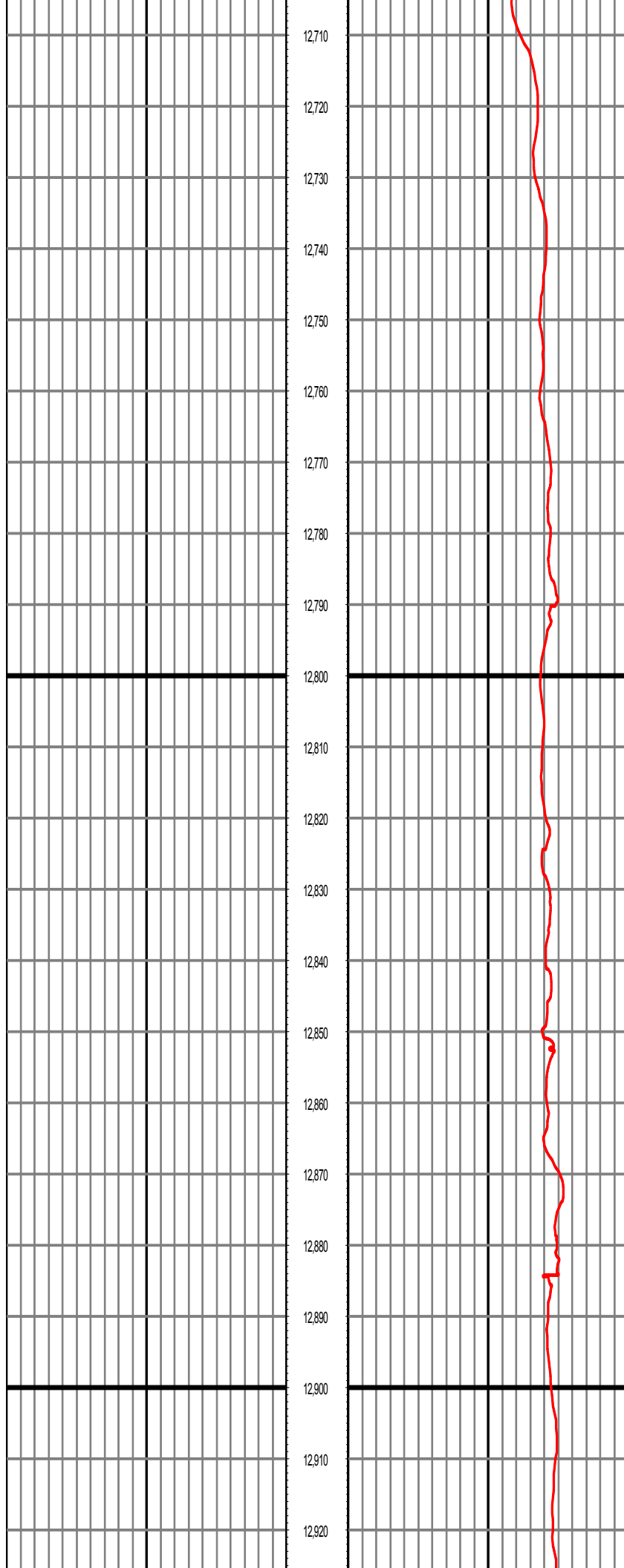
MD: 12227.00 INC: 90.90 AZ: 359.30 TVD: 7242.21 VS: 4403.63



MD: 12320.00 INC: 91.70 AZ: 358.90 TVD: 7240.10 VS: 4496.59

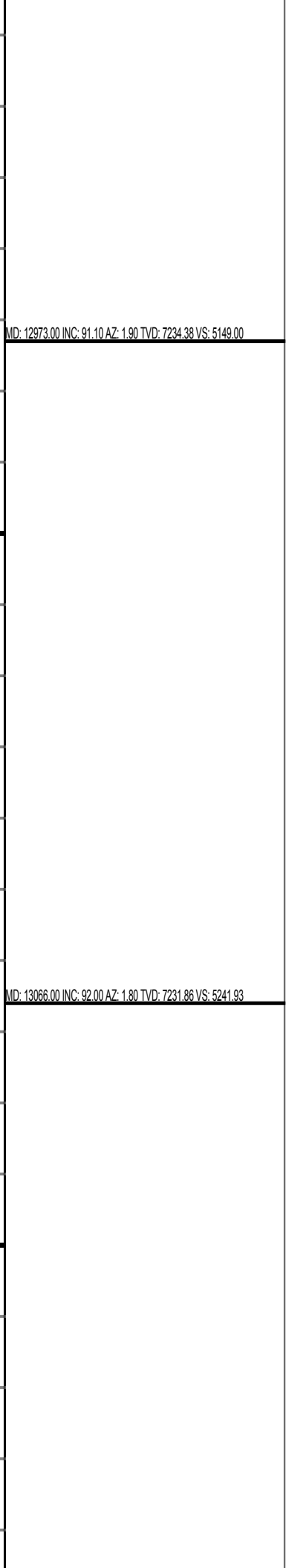
MD: 12416.00 INC: 91.70 AZ: 358.00 TVD: 7237.26 VS: 4592.50





MD: 12788.00 INC: 91.30 AZ: 358.20 TVD: 7239.87 VS: 4964.16

MD: 12881.00 INC: 92.20 AZ: 358.20 TVD: 7237.03 VS: 5057.06

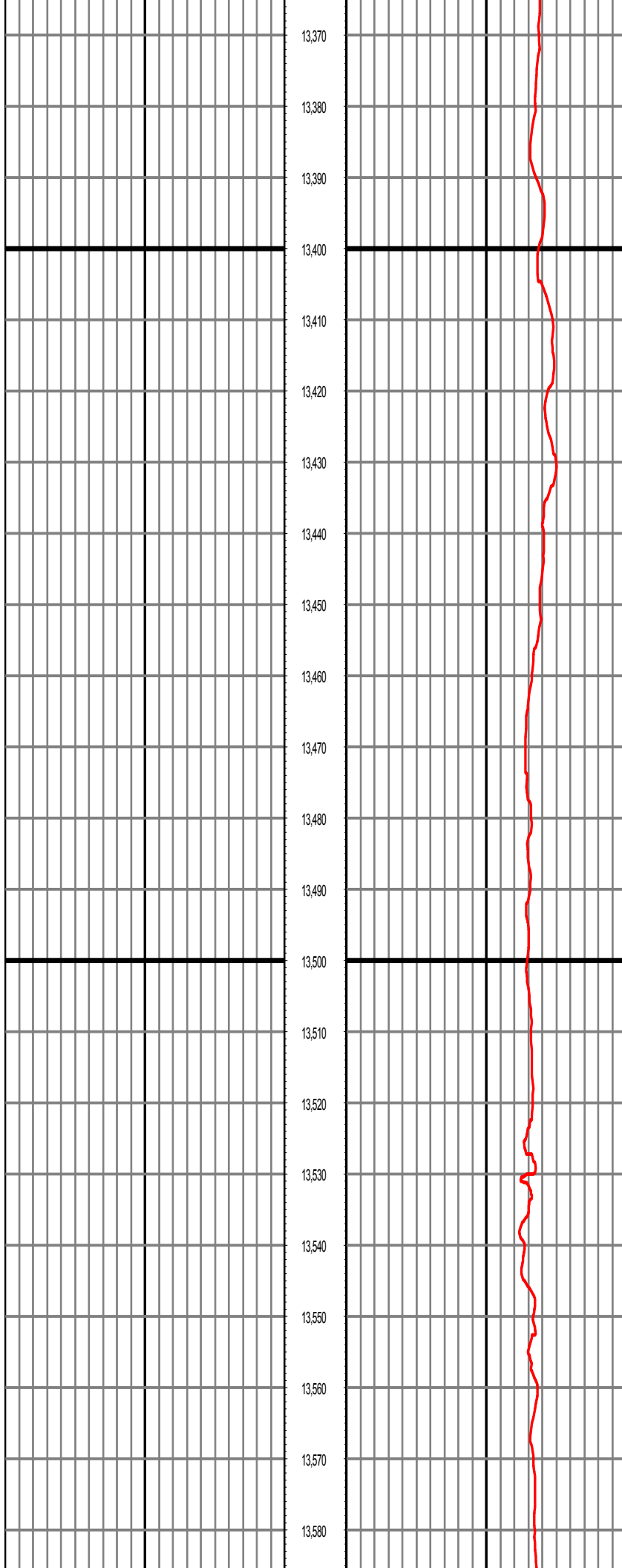




MD: 13158.00 INC: 90.50 AZ: 0.50 TVD: 7229.86 VS: 5333.89

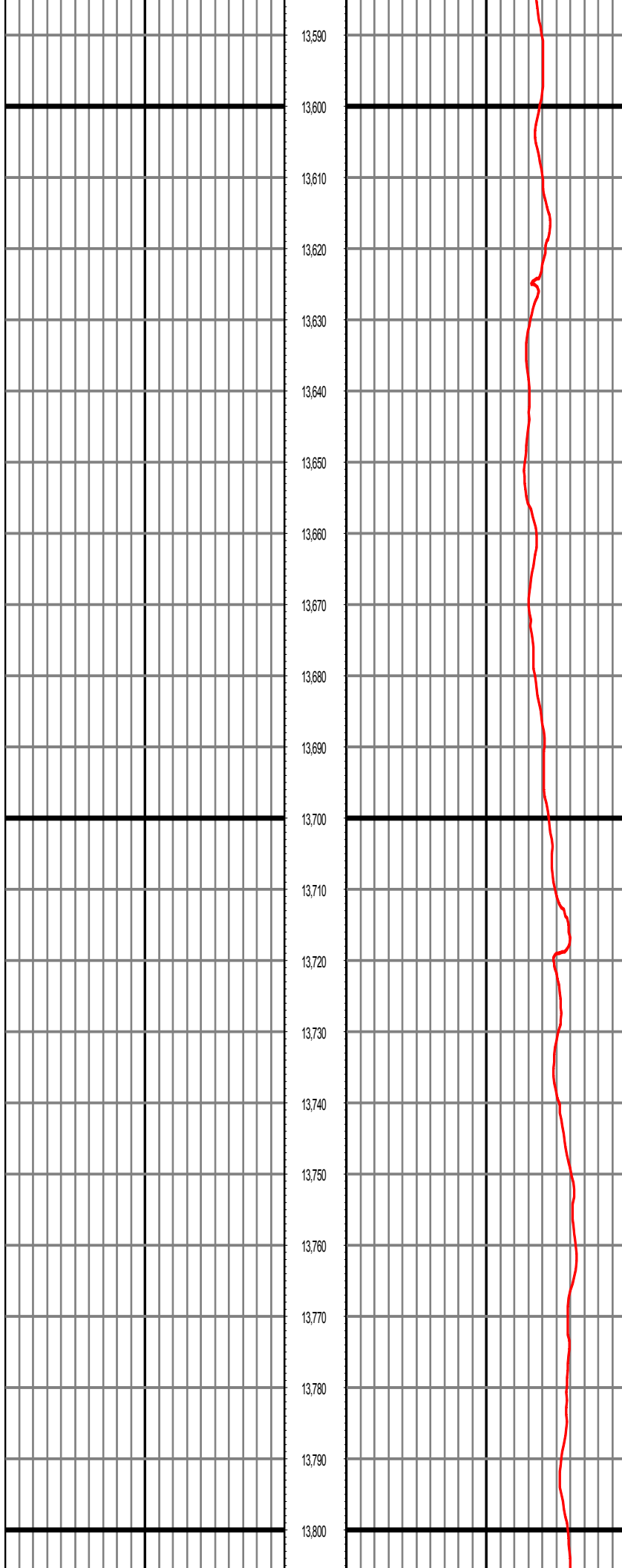
MD: 13215.00 INC: 90.60 AZ: 359.70 TVD: 7229.31 VS: 5390.89

MD: 13344.00 INC: 89.10 AZ: 359.20 TVD: 7229.65 VS: 5519.87



MD: 13436.00 INC: 89.70 AZ: 359.00 TVD: 7230.61 VS: 5611.85

MD: 13529.00 INC: 90.80 AZ: 359.00 TVD: 7230.20 VS: 5704.82



MD: 13621.00 INC: 88.90 AZ: 0.10 TVD: 7230.45 VS: 5796.81

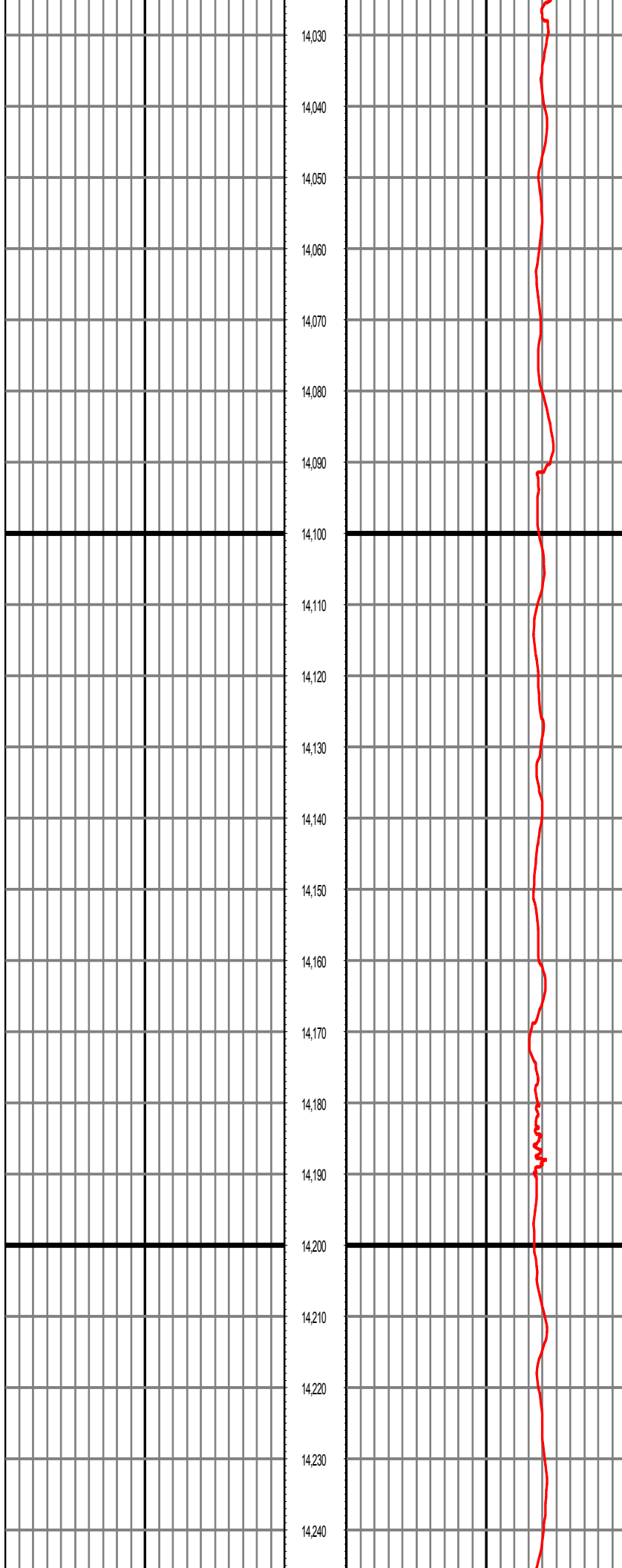
MD: 13714.00 INC: 89.10 AZ: 359.90 TVD: 7232.07 VS: 5889.79

MD: 13806.00 INC: 90.30 AZ: 359.90 TVD: 7232.55 VS: 5981.79

MD: 13806.00 INC: 90.30 AZ: 359.90 TVD: 7232.55 VS: 5981.79

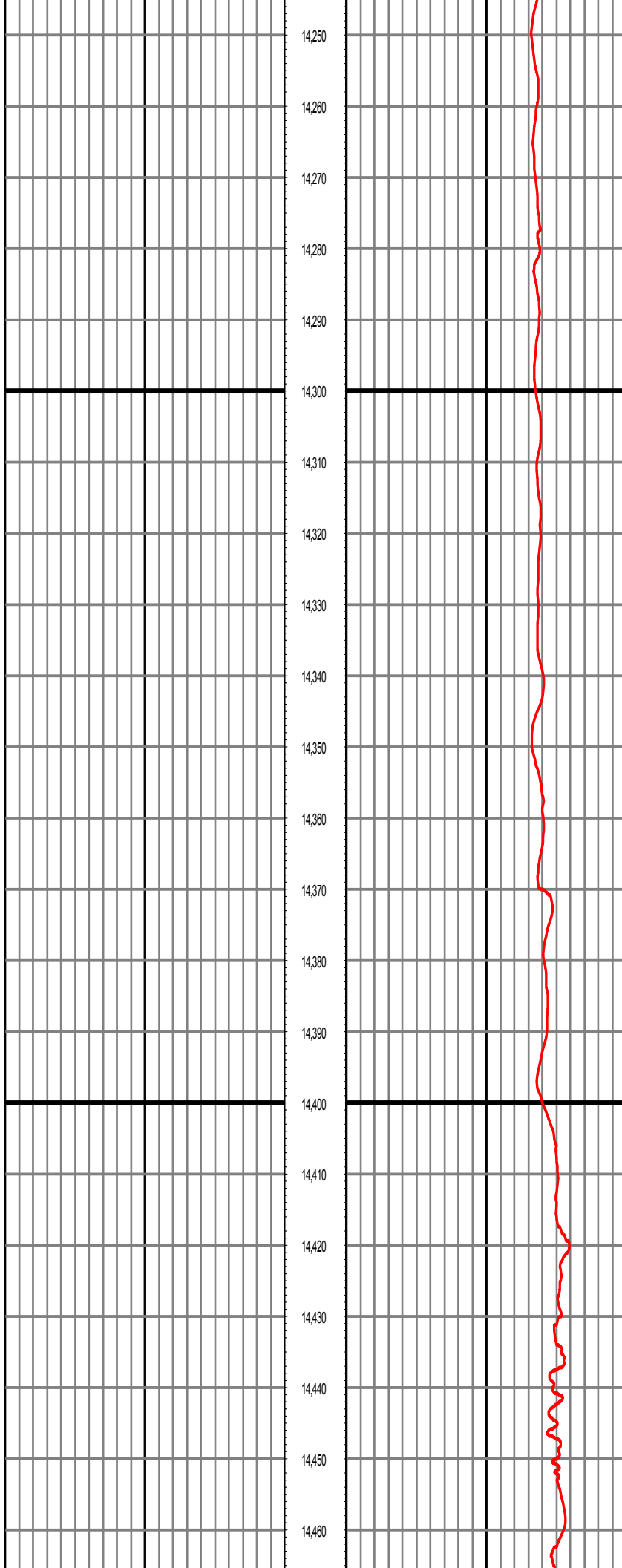
MD: 13899.00 INC: 91.70 AZ: 359.40 TVD: 7230.93 VS: 6074.77

MD: 13991.00 INC: 91.60 AZ: 359.60 TVD: 7228.28 VS: 6166.72



MD: 14084.00 INC: 89.90 AZ: 0.60 TVD: 7227.06 VS: 6259.71

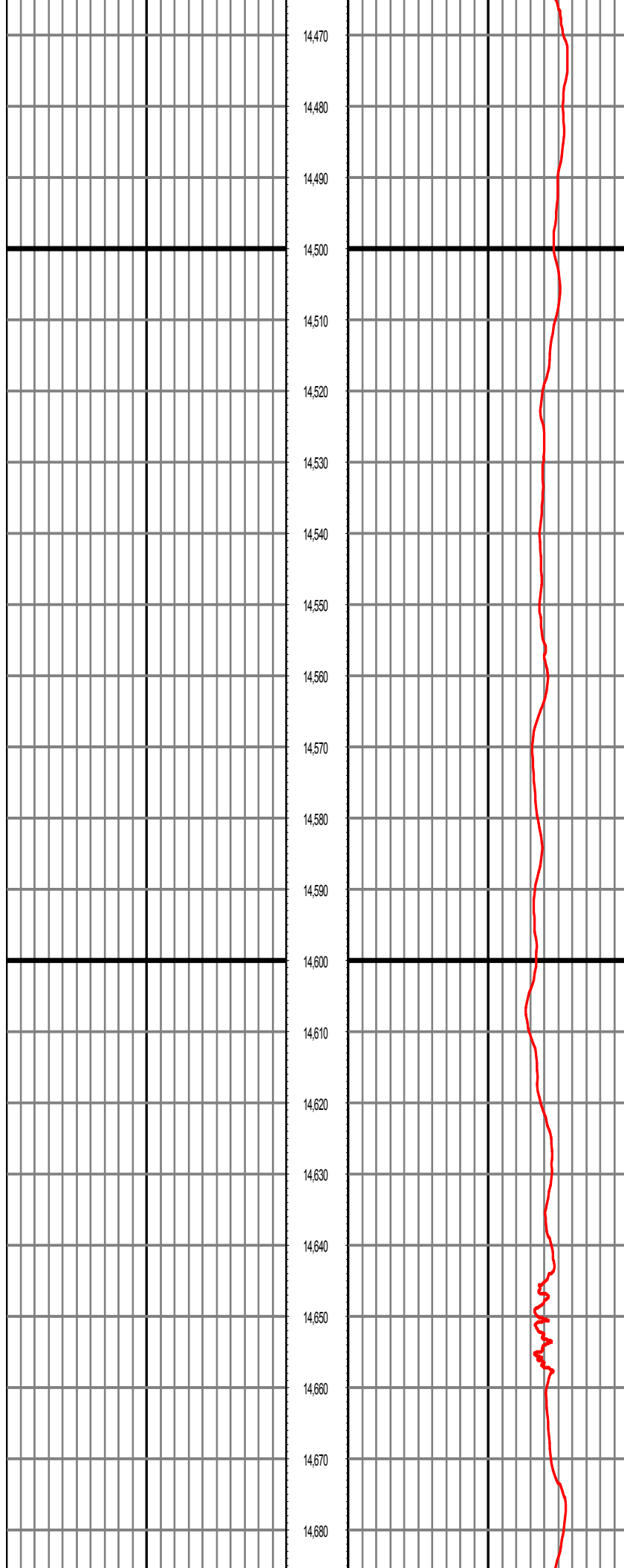
MD: 14177.00 INC: 90.20 AZ: 0.50 TVD: 7226.98 VS: 6352.71



MD: 14269.00 INC: 90.40 AZ: 359.60 TVD: 7226.50 VS: 6444.70

MD: 14362.00 INC: 91.00 AZ: 359.70 TVD: 7225.36 VS: 6537.69

MD: 14455.00 INC: 92.00 AZ: 359.20 TVD: 7222.93 VS: 6630.65



14,470

14,480

14,490

14,500

14,510

14,520

14,530

14,540

14,550

14,560

14,570

14,580

14,590

14,600

14,610

14,620

14,630

14,640

14,650

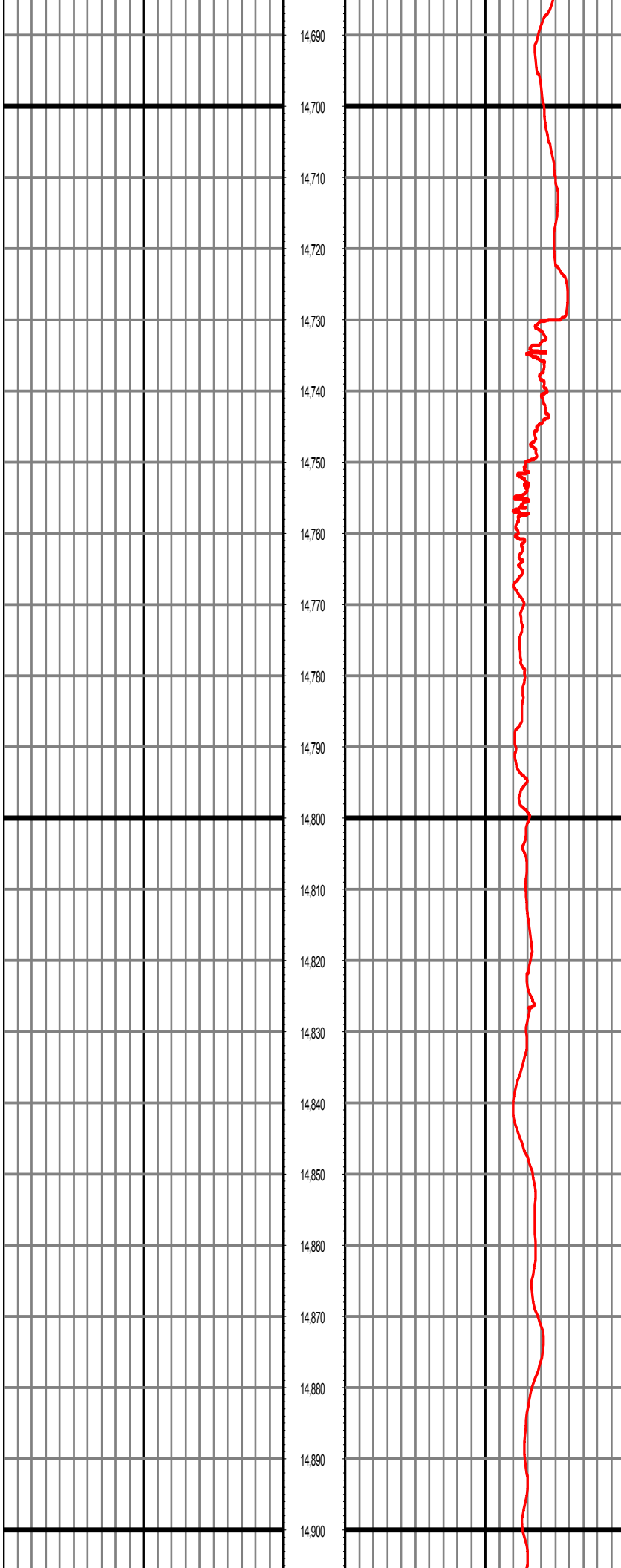
14,660

14,670

14,680

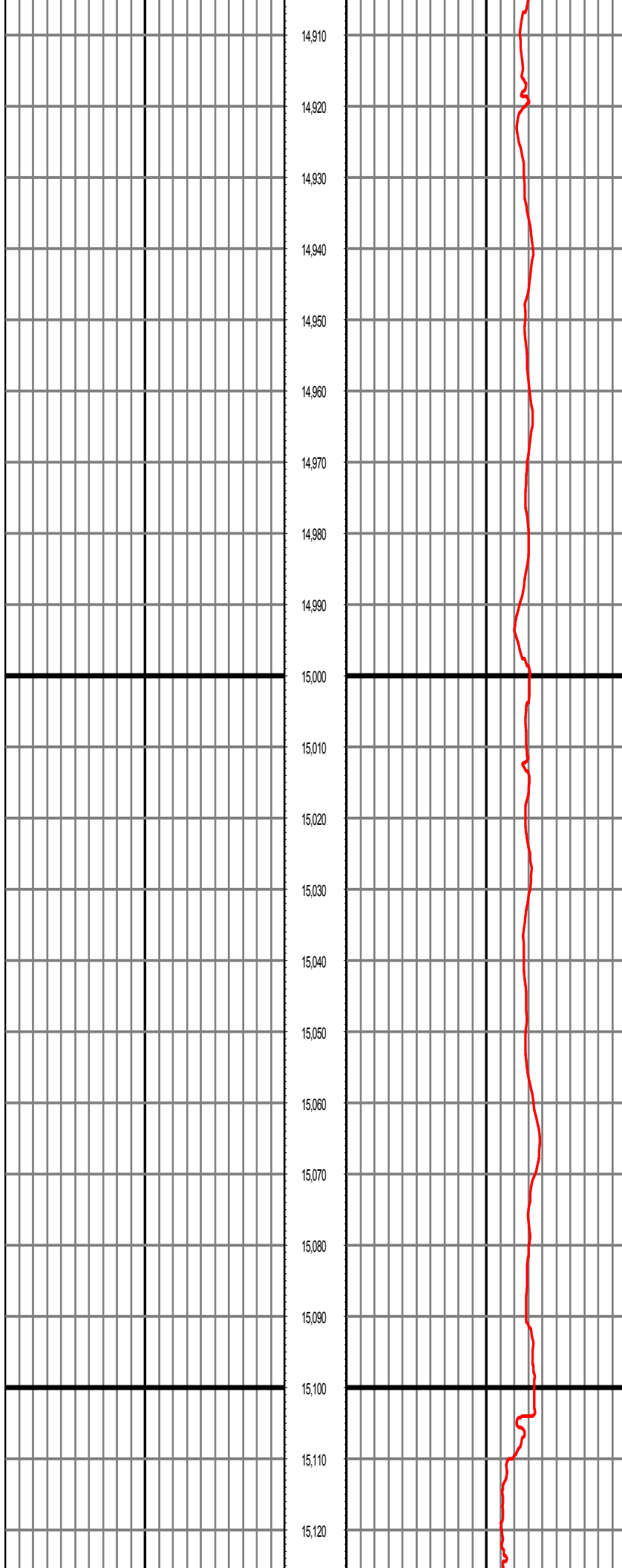
MD: 14547.00 INC: 90.20 AZ: 0.00 TVD: 7221.16 VS: 6722.62

MD: 14640.00 INC: 91.00 AZ: 0.10 TVD: 7220.19 VS: 6815.61



MD: 14732.00 INC: 91.40 AZ: 359.80 TVD: 7218.26 VS: 6907.59

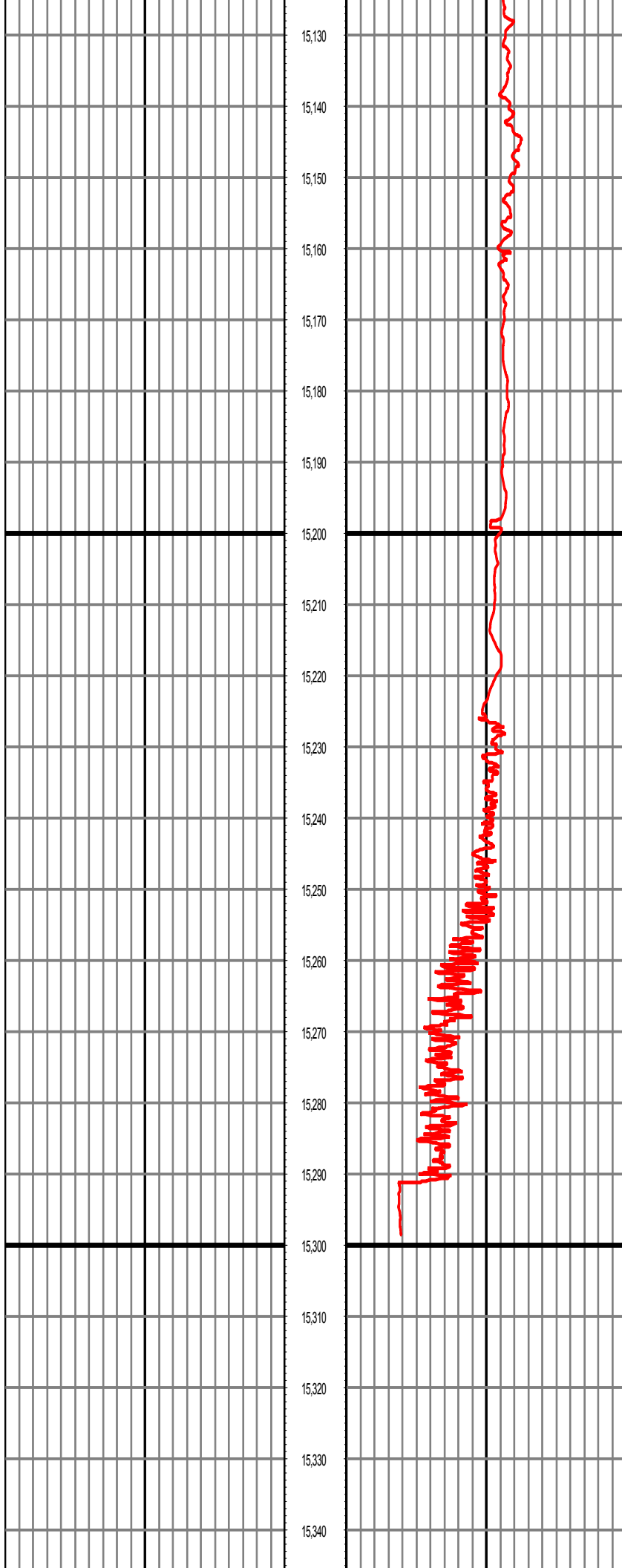
MD: 14824.00 INC: 91.80 AZ: 359.00 TVD: 7215.69 VS: 6999.54



MD: 14917.00 INC: 88.40 AZ: 357.70 TVD: 7215.53 VS: 7092.48

MD: 15009.00 INC: 90.30 AZ: 357.90 TVD: 7216.57 VS: 7184.38

MD: 15102.00 INC: 92.20 AZ: 358.10 TVD: 7214.54 VS: 7277.28



MD: 15194.00 INC: 93.60 AZ: 358.30 TVD: 7209.89 VS: 7369.10

MD: 15287.00 INC: 91.30 AZ: 358.50 TVD: 7205.92 VS: 7461.96

MD: 15294.00 INC: 91.30 AZ: 358.50 TVD: 7205.76 VS: 7468.96

