



September 22, 2015

Re: Anschutz State 5-62-27_34 Sec 22 SWSW – Onsite Approval

Attn: Steve Freese – Minerals Field Technician

State of Colorado surface property

T5N-R62W- Section 27&34

SHL: SWSW Sec 22, T5N-R62W

Dear Mr. Freese,

Bill Barrett Corporation ("BBC") desires to drill five (4) wells on the **Anschutz State 5-62-27_34 Sec 22 SWSW Pad** ("the Well Pad"). The Well Pad is operated by Bill Barrett Corporation on State of Colorado surface property. The State of Colorado owns minerals within the spacing unit comprising 5N-62W sections 27 and 34. The minerals are leased to Bill Barrett Corporation under Oil and Gas Lease numbers 9797.8 and 9798.8.

Sincerely,

BILL BARRETT CORPORATION

Justin Mihalcin
303-312-8745

I hereby acknowledge that a satisfactory onsite was performed on 9-22-2015 and I have received survey plats for the **Anschutz State 5-62-27_34 Sec 22 SWSW Pad**.

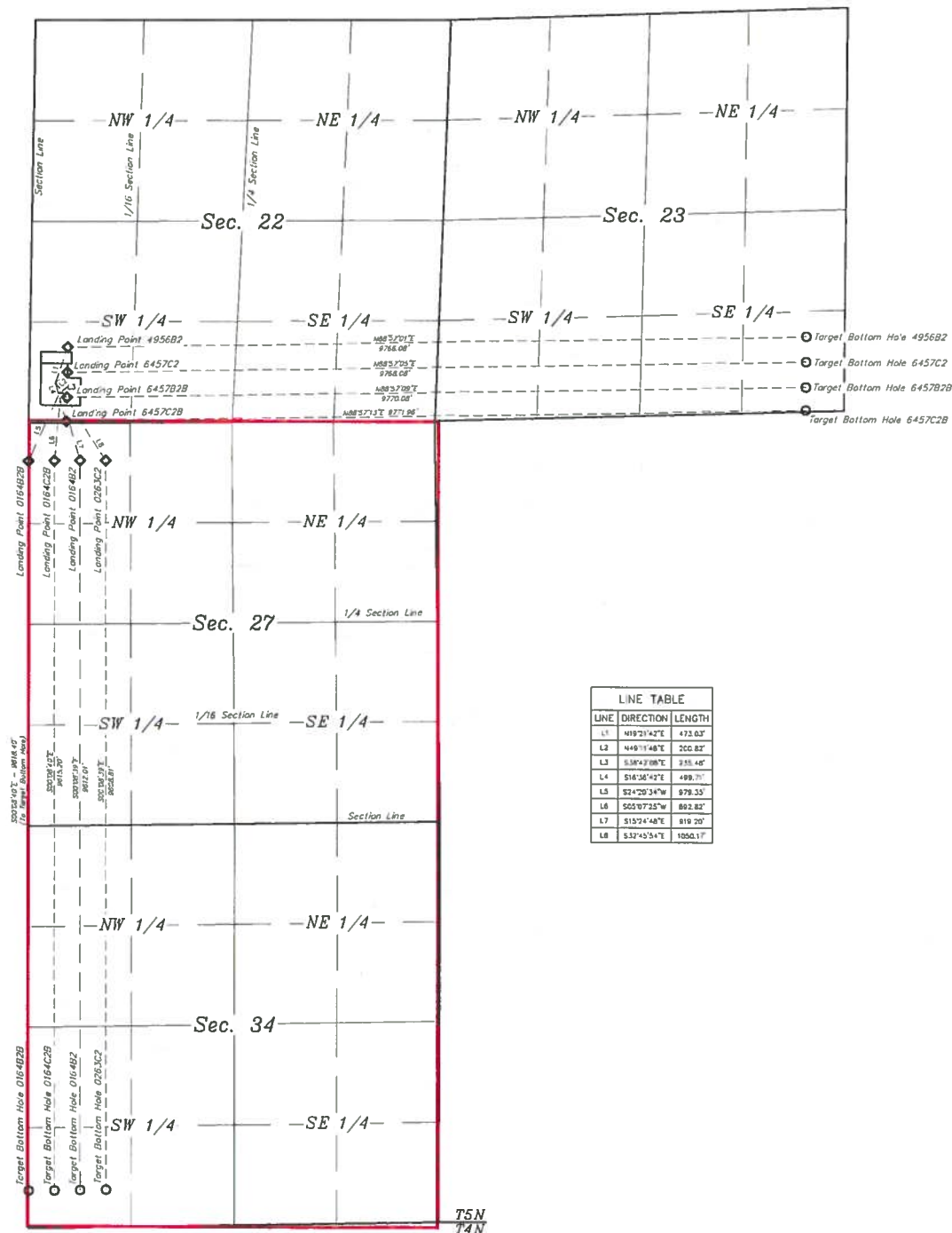
COLORADO STATE LAND BOARD

By: 

Steve Freese
Mineral Field Technician
State Board of Land Commissioners

Date: 11/10/15

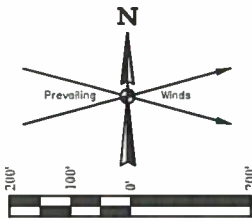
N



LINE	DIRECTION	LENGTH
L1	N19°21'42"E	473.03
L2	N49°11'48"E	200.82
L3	S38°47'08"E	235.48
L4	S16°36'42"E	489.75
L5	S24°20'34"W	979.35
L6	S05°07'25"W	892.82
L7	S15°7'48"E	819.20
L8	S32°45'54"E	1050.17

BILL BARRETT CORPORATION
ANSCHUTZ STATE 5-62-22 23 SWSW PAD
ANSCHUTZ STATE #5-62-22-6457C2B, 6457B2B,
6457C2, 4956B2, ANSCHUTZ STATE FED
#5-62-27-0164B2B, 0164C2B, 0164B2 & 0263C2
SW 1/4 SW 1/4, SECTION 22, T5N, R62W, 6th P.M.
WELD COUNTY, COLORADO

DRAWN BY: K.B.	DATE DRAWN: 04-08-15
SCALE: 1" = 100'	REVISED: 06-22-15
MULTI-Well PLAN	FIGURE #5



New Pad Layout

Proposed Access Road
for ANSCHUTZ STATE
5-62-22_23 NWNW PAD



Existing Fence

PRODUCTION
FACILITY PAD

DRILLING PAD

Proposed
Access Road

PROPOSED ANSCHUTZ STATE
5-62-22_23 SWSW PAD
ANSCHUTZ STATE
#5-62-22-4956B2
(NAD 83)
Lat: 40.379522°
Long: 104.318325°
(NAD 27)
Lat: 40.379539°
Long: 104.317817°

Topsoil Stockpile

SW Cor. Sec. 22,
Alum. Cap. #4845,
0.5' High, N/S Fence

500' Offset
from Edge of
Disturbance

Existing
Cattle Guard

Existing Buried Pipeline

Existing
Road

Section 22
Section 27

LINE TABLE

LINE	DIRECTION	LENGTH
L1	N89°W	134'
L2	N89°W	349'
L3	S41°W	582'
L4	S48°W	279'
L5	SOUTH	162'
L6	SOUTH	441'
L7	S05°E	391'
L8	S14°E	110'

PLANT COMMUNITY

- ☐ DISTURBED GRASSLAND
- ☒ NATIVE GRASSLAND
- ☐ SHRUB LAND
- ☐ PLAINS RIPARIAN
- ☐ MOUNTAIN RIPARIAN
- ☐ FOREST LAND
- ☐ WETLANDS AQUATIC
- ☐ ALPINE
- ☐ OTHER (Describe):

CURRENT LAND USE

- | | | | | | |
|---|---|-------------------------------------|---|---|------------------------------|
| <input type="checkbox"/> CROP LAND: | <input type="checkbox"/> IRRIGATED | <input type="checkbox"/> DRY LAND | <input type="checkbox"/> IMPROVED PASTURE | <input type="checkbox"/> HAY MEADOW | <input type="checkbox"/> CRP |
| <input type="checkbox"/> NON-CROP LAND: | <input checked="" type="checkbox"/> RANGELAND | <input type="checkbox"/> TIMBER | <input type="checkbox"/> RECREATIONAL | <input type="checkbox"/> OTHER (Describe) | |
| <input type="checkbox"/> SUBDIVIDED: | <input type="checkbox"/> INDUSTRIAL | <input type="checkbox"/> COMMERCIAL | <input type="checkbox"/> RESIDENTIAL | | |

FUTURE LAND USE

- | | | | | | |
|---|---|-------------------------------------|---|---|------------------------------|
| <input type="checkbox"/> CROP LAND: | <input type="checkbox"/> IRRIGATED | <input type="checkbox"/> DRY LAND | <input type="checkbox"/> IMPROVED PASTURE | <input type="checkbox"/> HAY MEADOW | <input type="checkbox"/> CRP |
| <input type="checkbox"/> NON-CROP LAND: | <input checked="" type="checkbox"/> RANGELAND | <input type="checkbox"/> TIMBER | <input type="checkbox"/> RECREATIONAL | <input type="checkbox"/> OTHER (Describe) | |
| <input type="checkbox"/> SUBDIVIDED: | <input type="checkbox"/> INDUSTRIAL | <input type="checkbox"/> COMMERCIAL | <input type="checkbox"/> RESIDENTIAL | | |

BILL BARRETT CORPORATION

ANSCHUTZ STATE 5-62-22_23 SWSW PAD
ANSCHUTZ STATE #5-62-22-6457C2B, 6457B2B,
6457C2, 4956B2, ANSCHUTZ STATE FED
#5-62-27-0164B2B, 0164C2B, 0164B2 & 0263C2
SW 1/4 SW 1/4, SECTION 22, T5N, R62W, 6th P.M.
WELD COUNTY, COLORADO

SURVEYED BY: DALLAS NIELSEN, B.C. | SURVEY DATE: 06-04-15
DRAWN BY: K.B. | DATE DRAWN: 04-08-15
SCALE: 1" = 200' | REVISED: 06-22-15

LOCATION DRAWING

FIGURE #4



UELS, LLC
Corporate Office • 85 South 200 East
Vernal, UT 84078 • (435) 789-1017

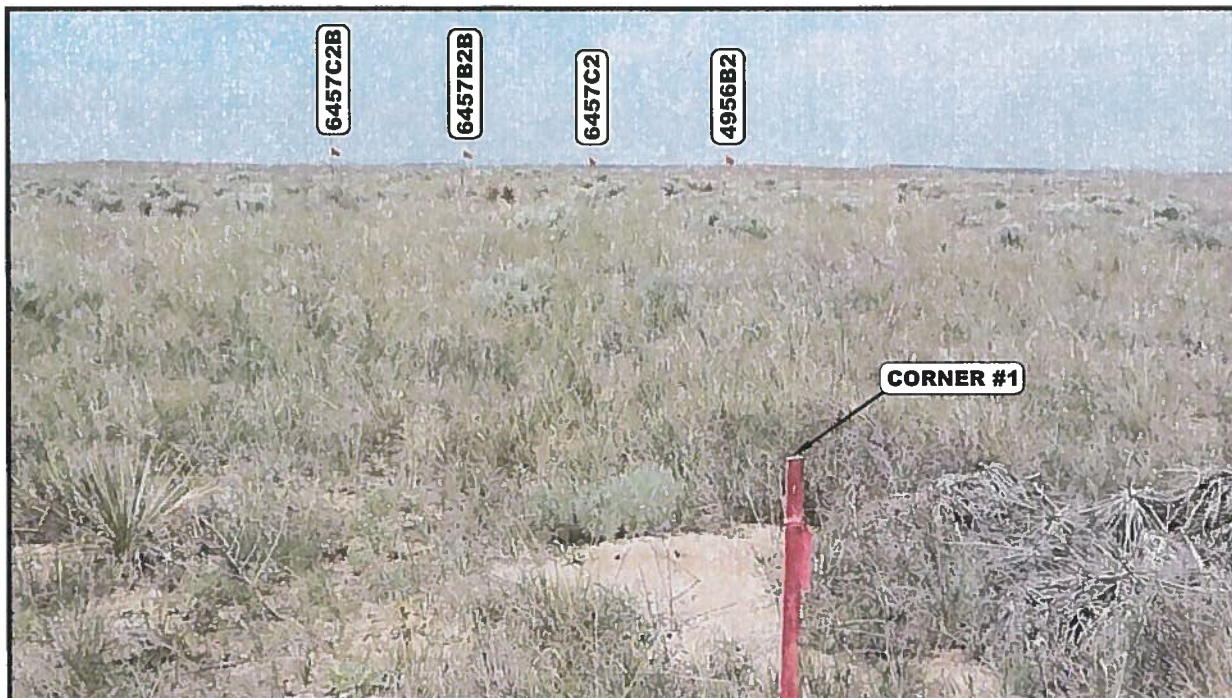


PHOTO: VIEW FROM CORNER #1 TO LOCATION STAKES

CAMERA ANGLE: WESTERLY

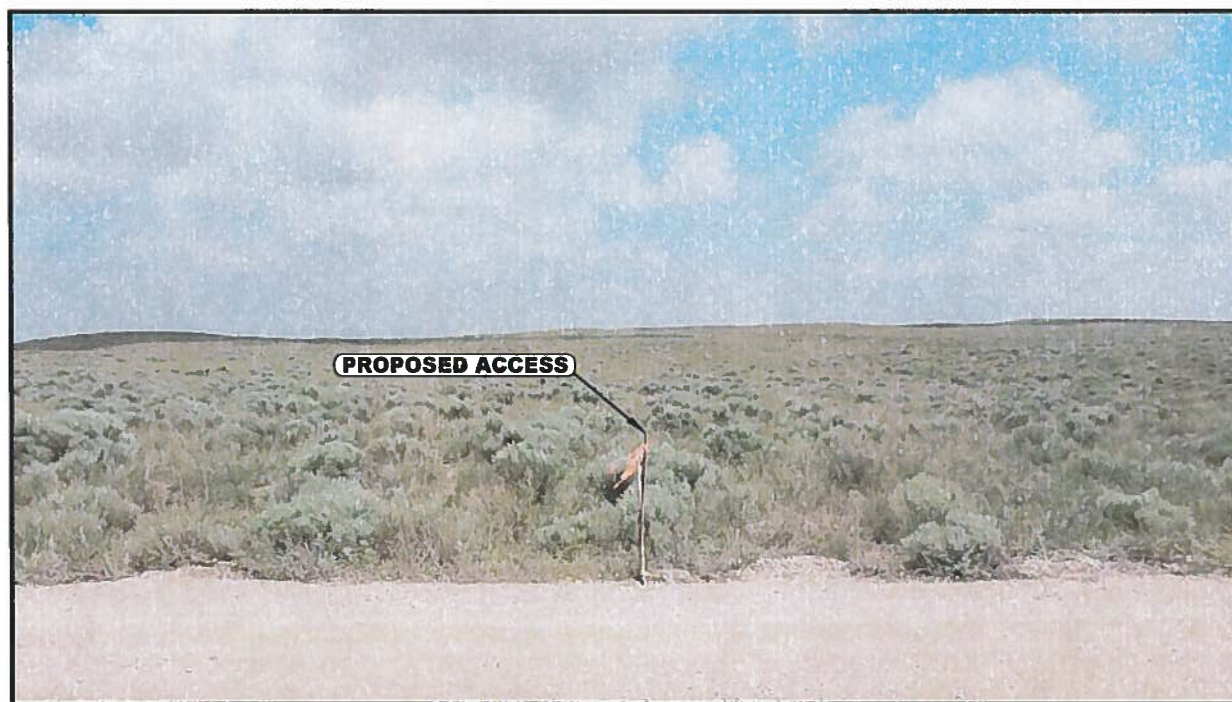


PHOTO: VIEW FROM BEGINNING OF PROPOSED ACCESS

CAMERA ANGLE: WESTERLY

BILL BARRETT CORPORATION

ANSCHUTZ STATE 5-62-22 23 SWSW PAD
ANSCHUTZ STATE #5-62-22-6457C2B, 6457B2B,
6457C2, 4956B2, ANSCHUTZ STATE FED
#5-62-27-0164B2B, 0164C2B, 0164B2 & 0263C2
SW 1/4 SW 1/4, SECTION 22, T5N, R62W, 6th P.M.
WELD COUNTY, COLORADO

DRAWN BY: J.L.G.

DATE DRAWN: 04-10-15

TAKEN BY: D.N.

REV: 06-15-15

LOCATION PHOTOS

PHOTO 1



UELS, LLC
Corporate Office * 85 South 200 East
Vernal, UT 84078 * (435) 789-1017

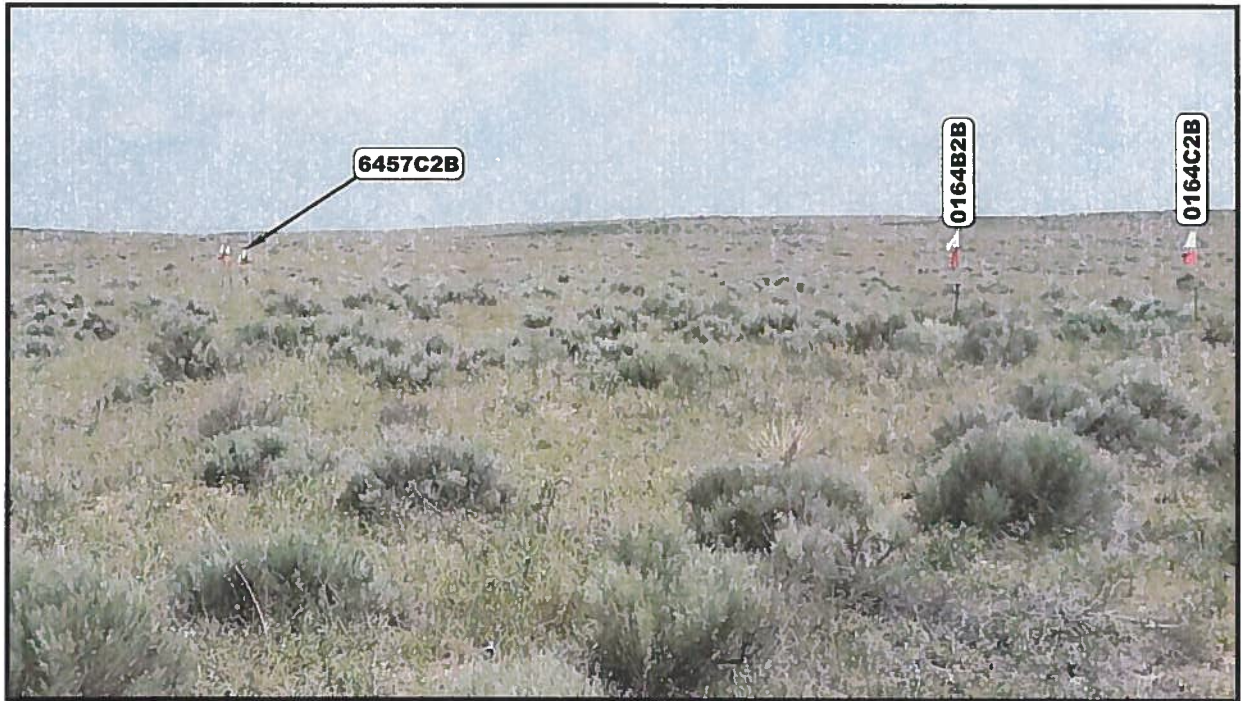


PHOTO: VIEW OF LOCATION STAKES

CAMERA ANGLE: NORTHERLY



PHOTO: VIEW OF LOCATION STAKES

CAMERA ANGLE: EASTERLY

BILL BARRETT CORPORATION

ANSCHUTZ STATE 5-62-22 23 SWSW PAD
ANSCHUTZ STATE #5-62-22-6457C2B, 6457B2B,
6457C2, 4956B2, ANSCHUTZ STATE FED
#5-62-27-0164B2B, 0164C2B, 0164B2 & 0263C2
SW 1/4 SW 1/4, SECTION 22, T5N, R62W, 6th P.M.
WELD COUNTY, COLORADO

DRAWN BY: J.L.G.

DATE DRAWN: 04-10-15

TAKEN BY: D.N.

REV: 06-15-15

LOCATION PHOTOS

PHOTO 2



UELS, LLC

Corporate Office * 85 South 200 East
Vernal, UT 84078 * (435) 789-1017

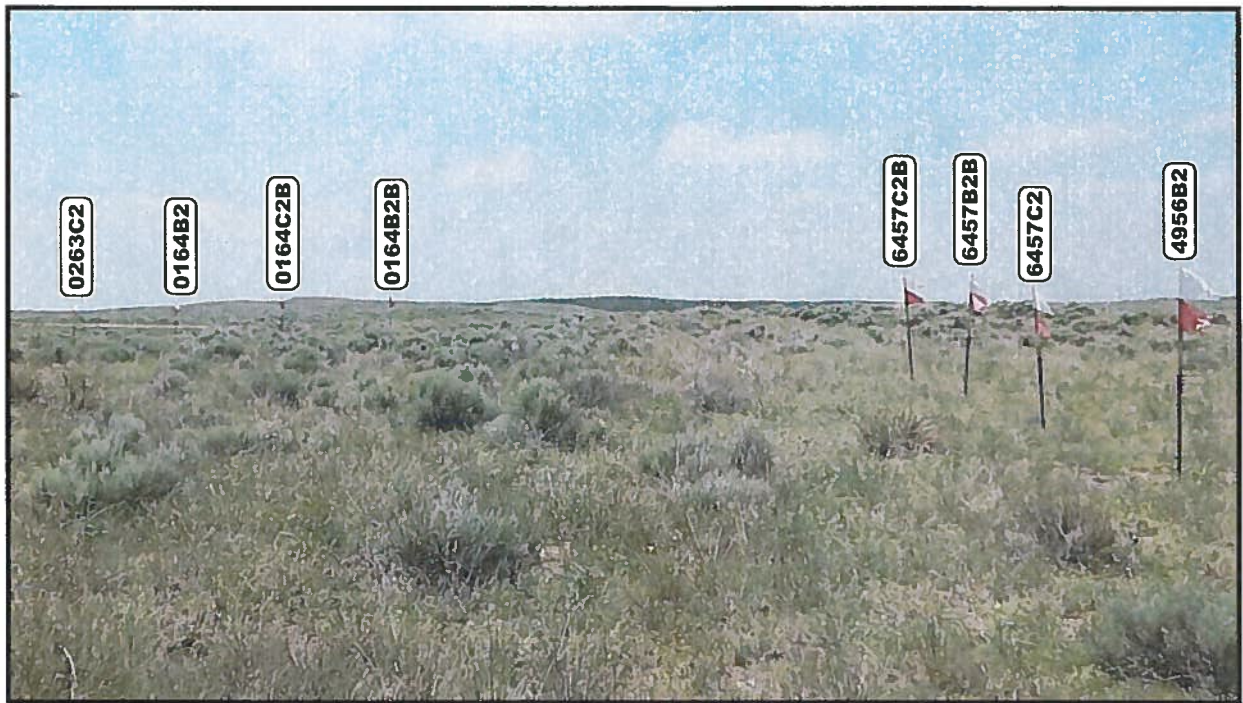


PHOTO: VIEW OF LOCATION STAKES

CAMERA ANGLE: SOUTHERLY

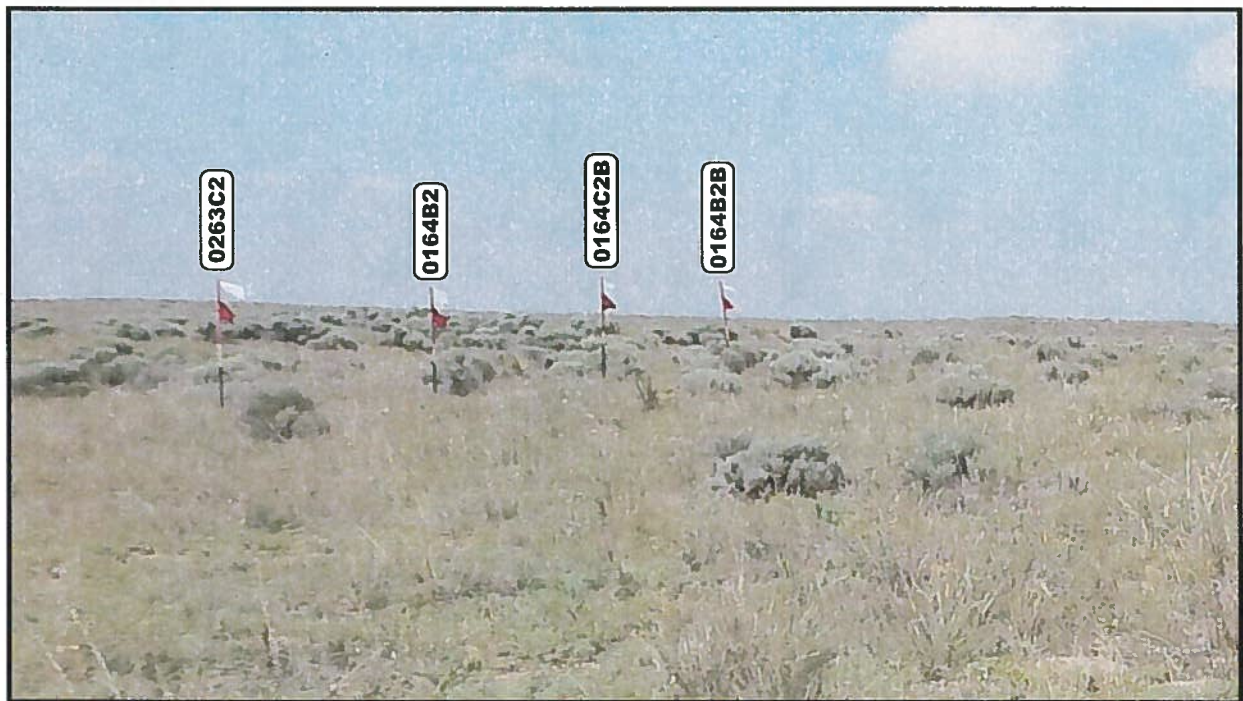


PHOTO: VIEW OF LOCATION STAKES

CAMERA ANGLE: WESTERLY

BILL BARRETT CORPORATION

ANSCHUTZ STATE 5-62-22 23 SWSW PAD
ANSCHUTZ STATE #5-62-22-6457C2B, 6457B2B,
6457C2, 4956B2, ANSCHUTZ STATE FED
#5-62-27-0164B2B, 0164C2B, 0164B2 & 0263C2
SW 1/4 SW 1/4, SECTION 22, T5N, R62W, 6th P.M.
WELD COUNTY, COLORADO

DRAWN BY: J.L.G.

DATE DRAWN: 04-10-15

TAKEN BY: D.N.

REV: 06-15-15

LOCATION PHOTOS

PHOTO 3



UELS, LLC

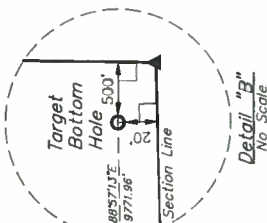
Corporate Office * 85 South 200 East
Vernal, UT 84078 * (435) 789-1017

BILL BARRETT CORPORATION
ANSCHUTZ STATE 5-62-22 23 SWSW PAD
#5-62-22-6457C7B
SW 1/4 SW 1/4, SECTION 22, T5N, R62W, 6th P
WELD COUNTY, COLORADO

BASIS OF BEARINGS
BASIS OF BEARINGS IS A G.P.S. OBSERVATION

SPOT ELEVATION LOCATED AT THE NORTHEAST CORNER OF SECTION 24, T3N, R62W, 4th P.M. TAKEN FROM THE POINT OF QUAD, QUADRANGLE, COLORADO, WELD COUNTY, 7.5 MINUTE QUAD (TOPOGRAPHIC MAP) PUBLISHED BY THE UNITED STATES DEPARTMENT OF THE INTERIOR, GEOLOGICAL SURVEY. SAID ELEVATION IS MARKED AS BEING 4530 FEET.

LINE TABLE		
LINE	DIRECTION	LENGTH
L1	S16°36'42"E	499.71'



CERTIFICATE
THIS IS TO CERTIFY THAT THE ABOVE SET OF PARTICIPANT RECORDS AND
COPIES OF ACTUAL SURVEY'S MADE IS TRUE AND UNDER MY SUPERVISION
AND THAT THE SAME ARE TRUE AND CORRECT TO THE BEST OF MY
KNOWLEDGE AND BELIEF

REGISTERED LAND SURVEYOR
REGISTRATION NO. 28285
STATE OF COLORADO

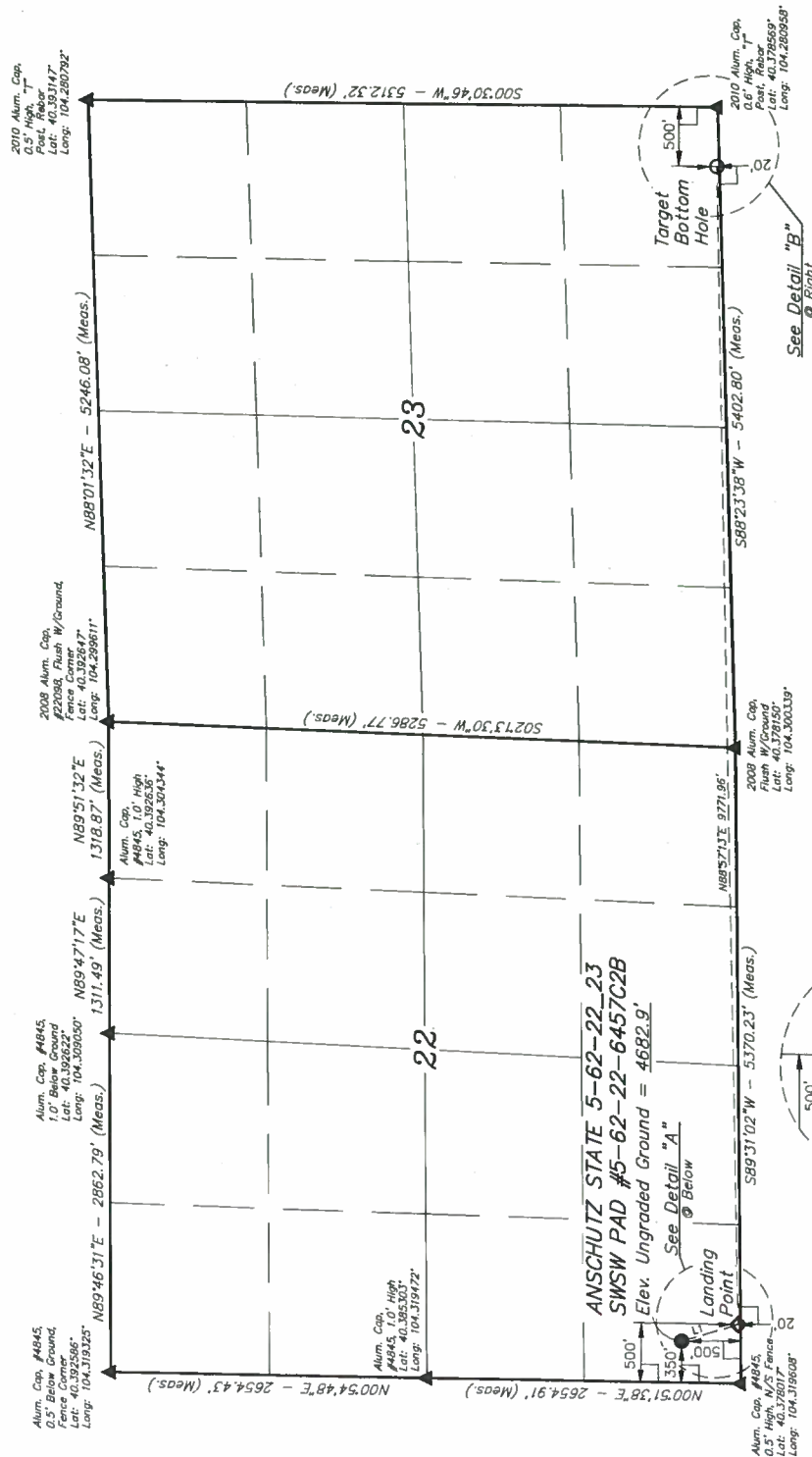


UELS, LLC
Corporate Office • 85 South 200 East
Vernal, UT 84078 • (435) 789-1017

ENGINEERING & LAND SURVEYING
SURVEYED BY: DALLAS NIELSEN, B.C. DATE: 03-24-15
DRAWN BY: K.B. DATE DRAWN: 04-08-15

DRAWN BY: K.B.	DATE DRAWN: (4-08-15
SCALE: 1" = 1000'	REVISED: (00-00-00)

WELL LOCATION PLAT



PDOP = 1.3

NAD 83 (TARGET BOTTOM HOLE)		NAD 83 (LANDING POINT)		NAD 83 (SURFACE LOCATION)	
LATITUDE = 40°25'42.91" (40.73826)	LATITUDE = 104°25'43.83" (104.43759)	LATITUDE = 104°25'43.83" (104.43759)	LATITUDE = 104°25'43.83" (104.43759)	LATITUDE = 40°25'43.83" (40.73826)	LATITUDE = 104°25'43.83" (104.43759)
LONGITUDE = 104°16'57.91" (104.2826)	LONGITUDE = 104°16'54.13" (104.27814)	LONGITUDE = 104°16'54.13" (104.27814)	LONGITUDE = 104°16'54.13" (104.27814)	LONGITUDE = 104°16'57.91" (104.2826)	LONGITUDE = 104°16'57.91" (104.2826)
NAD 27 (TARGET BOTTOM HOLE)		NAD 27 (LANDING POINT)		NAD 27 (SURFACE LOCATION)	
LATITUDE = 40°25'42.97" (40.73869)	LATITUDE = 40°25'41.17" (40.73803)	LATITUDE = 40°25'41.17" (40.73803)	LATITUDE = 40°25'41.17" (40.73803)	LATITUDE = 40°25'42.97" (40.73869)	LATITUDE = 40°25'42.97" (40.73869)
LONGITUDE = 104°16'57.91" (104.2826)	LONGITUDE = 104°16'54.13" (104.27814)	LONGITUDE = 104°16'54.13" (104.27814)	LONGITUDE = 104°16'54.13" (104.27814)	LONGITUDE = 104°16'57.91" (104.2826)	LONGITUDE = 104°16'57.91" (104.2826)
STATE PLANE NAD 83 (COLORADO NORTH)		STATE PLANE NAD 83 (COLORADO NORTH)		STATE PLANE NAD 83 (COLORADO NORTH)	
N 138°58'45.45" E 33302.97' 96	N 138°57'41.71" E 33294.97' 96	N 138°57'41.71" E 33294.97' 96	N 138°57'41.71" E 33294.97' 96	N 138°58'45.45" E 33302.97' 96	N 138°58'45.45" E 33302.97' 96
STATE PLANE NAD 27 (COLORADO NORTH)		STATE PLANE NAD 27 (COLORADO NORTH)		STATE PLANE NAD 27 (COLORADO NORTH)	
N 33°08'45.45" E 33302.97' 96	N 32°27'41.66" E 33294.97' 95	N 32°27'41.66" E 33294.97' 95	N 32°27'41.66" E 33294.97' 95	N 33°08'45.45" E 33302.97' 96	N 33°08'45.45" E 33302.97' 96

LEGEND:

— 90° SYMBOL —

— PROPOSED WELL HEAD

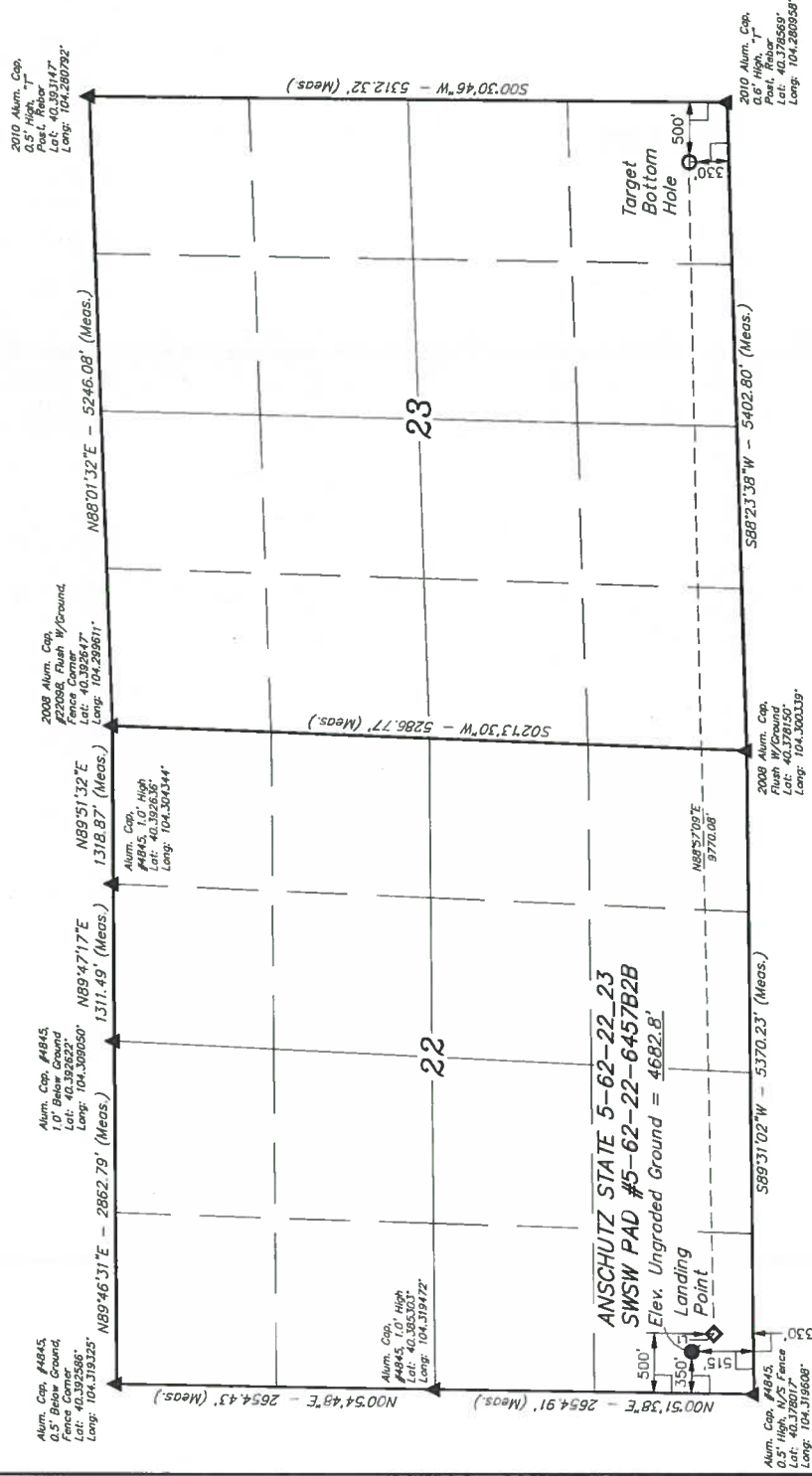
● TARGET BOTTOM HOLE.

 = LANDING POINT.
 = SECTION CORNERS LOCATED

BILL BARRETT CORPORATION
ANSCHUTZ STATE 5-62-22 23 SWSW PAD
#5-62-22-6457B7B
SW 1/4 SW 1/4, SECTION 22, T5N, R62W, 6th P
WELD COUNTY, COLORADO

BASIS OF BEARINGS
BASIS OF BEARINGS IS A G.P.S. OBSERVATION
BASIS OF ELEVATION

SPOT ELEVATION LOCATED AT THE NORTHEAST CORNER OF SECTION 24, T3N, R62W, 4th P.M. TAKEN FROM THE POINT OF ROCKS, QUADRANGLE, COLORADO, WELD COUNTY, 7.5 MINUTE QUAD (TOPOGRAPHIC MAP) PUBLISHED BY THE UNITED STATES DEPARTMENT OF THE INTERIOR, GEOLOGICAL SURVEY. SAID ELEVATION IS MARKED AS BEING 4530 FEET.



LINE TABLE		
LINE	DIRECTION	LENGTH
L1	S38°42'08"E	235.48'

CERTIFICATE OF CORRECTION

THIS IS TO CERTIFY THAT THE ABOVE DESCRIBED PARCELS, ACCORDING TO THE NOTES OF ACTUAL SURVEYS MADE BY ME, AND THAT THE SAME ARE TRUE AND CORRECT TO THE BEST OF MY KNOWLEDGE AND BELIEF

RECORDED LAND SURVEYOR
REGISTRATION No. 32183
STATE OF CALIFORNIA

APPROVED AND CORRECTED
JUL 19 2008
COUNTY OF LOS ANGELES

15

PDOP = 1.3



UELS, LLC
Corporate Office * 85 South 200 East
Vernal, UT 84078 * (435) 789-1017

ENGINEERING & LAND SURVEYING	SURVEYED BY: DALLAS NIELSEN, B.C.	DATE: 03-24-15
	DRAWN BY: K.B.	DATE DRAWN: 04-08-15
	SCALE: 1" = 1000'	REVISED: 00-00-00

WELL LOCATION PLAT

 = LANDING POINT,
 = SECTION CORNERS LOCATED

LEGEND:

— 90° SYMBOL

● = PROPOSED WELLHEAD.

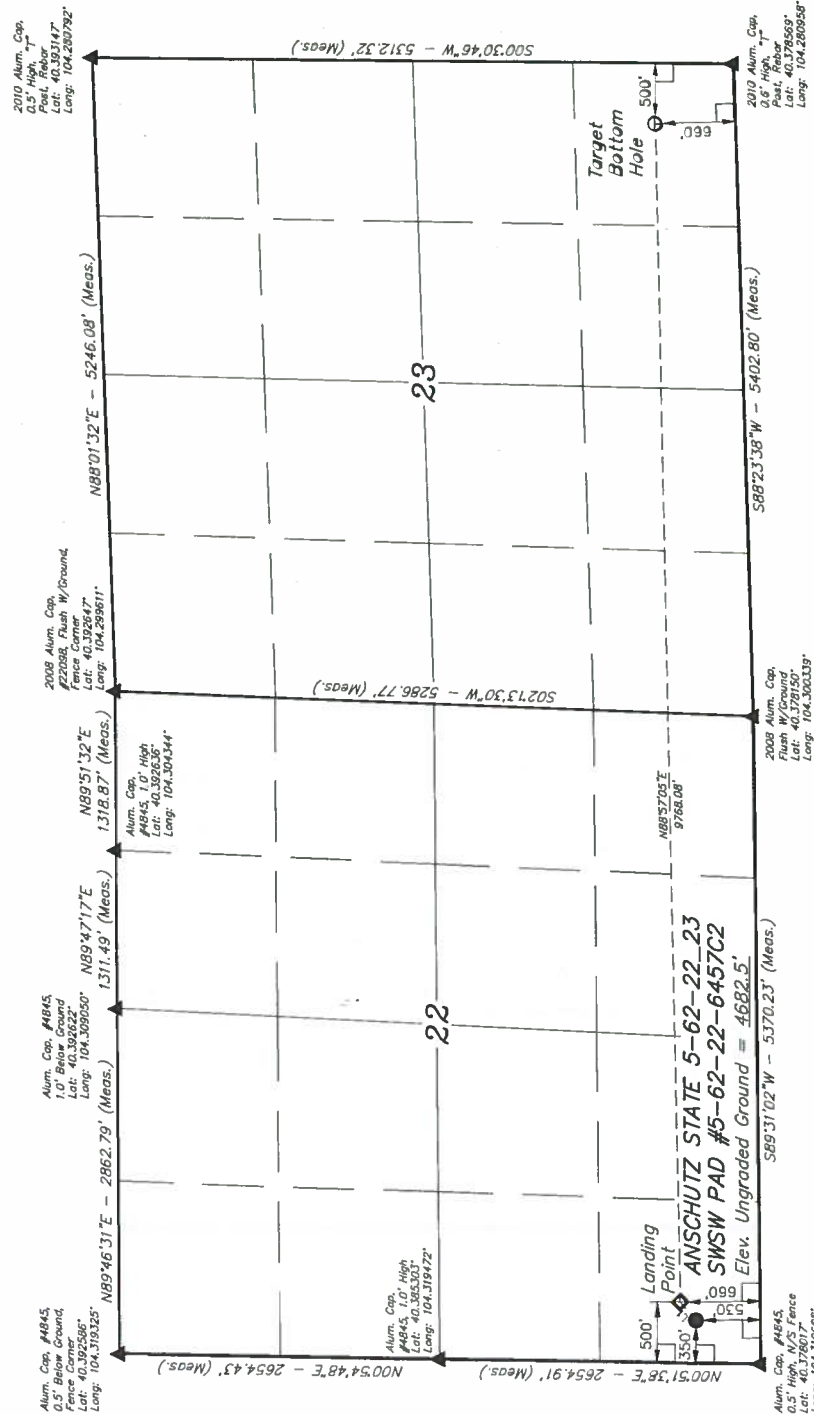
Q - TARGET BOTTOM

 = LANDING POINT,
 = SECTION CORNERS LOCATED

BILL BARRETT CORPORATION
ANSCHUTZ STATE 5-62-22 23 SWSW PAD
#5-62-22-6457C2
SW 1/4 SW 1/4, SECTION 22, T5N, R62W, 6th P
WELD COUNTY, COLORADO

BASIS OF BEARINGS
BASIS OF BEARINGS IS A G.P.S. OBSERVATION
BASIS OF ELEVATION

SPOT ELEVATION LOCATED AT THE NORTHEAST CORNER OF SECTION 24, T3N, R62W, 6th P.M. TAKEN FROM THE POINT OF ROCKS, QUADRANGLE, COLORADO, WELD COUNTY, 7.5 MINUTE QUAD (TOPOGRAPHIC MAP) PUBLISHED BY THE UNITED STATES DEPARTMENT OF THE INTERIOR, GEOLOGICAL SURVEY. SAID ELEVATION IS MARKED AS BEING 4530 FEET.



LINE TABLE		
LINE	DIRECTION	LENGTH
L1	N49°11'48"E	200.82'



CERTIFICATE

THIS IS TO CERTIFY THAT THE ABOVE SET FORTH NOTES OF ACTUAL SURVEYS MADE BY DEEDS NUMBER MY 50694 AND 50700 ARE TRUE AND CORRECT TO THE BEST OF MY KNOWLEDGE AND BELIEF.

REGISTERED LAND SURVEYOR
REGISTRATION NO. 22293
STATE OF CALIFORNIA

[Signature]

NO REGISTRATION REQUIRED
RECEIVED JAN 15 1983

PDOP = 1.3



UELS, LLC
Corporate Office • 85 South 200 East
Vernal, UT 84078 • (435) 789-1017

ENGINEERING & LAND SURVEYING	SURVEYED BY: DALLAS NIELSEN, B.C.	DATE: 03-24-15
	DRAWN BY: K.B.	DATE DRAWN: 04-08-15
	SCALE: 1" = 1000'	REVISED: 04-08-18

WELL LOCATION PLAT

LEGEND:

L = 90° SYMBOL
 ● = PROPOSED WELLHEAD.
 ○ = TARGET BOTTOM HOLE.
 ◆ = LANDING POINT.
 ▲ = SECTION CORNERS LOOKING NORTH.

T5N, R62W, 6th P.M.

BILL BARRETT CORPORATION

ANSCHUTZ STATE 5-62-22 23 SWSW PAD
#5-62-22-4956B2
SW 1/4 SW 1/4, SECTION 22, T5N, R62W, 6th P.M.
WELD COUNTY, COLORADO

BASIS OF BEARINGS
BASIS OF ELEVATION

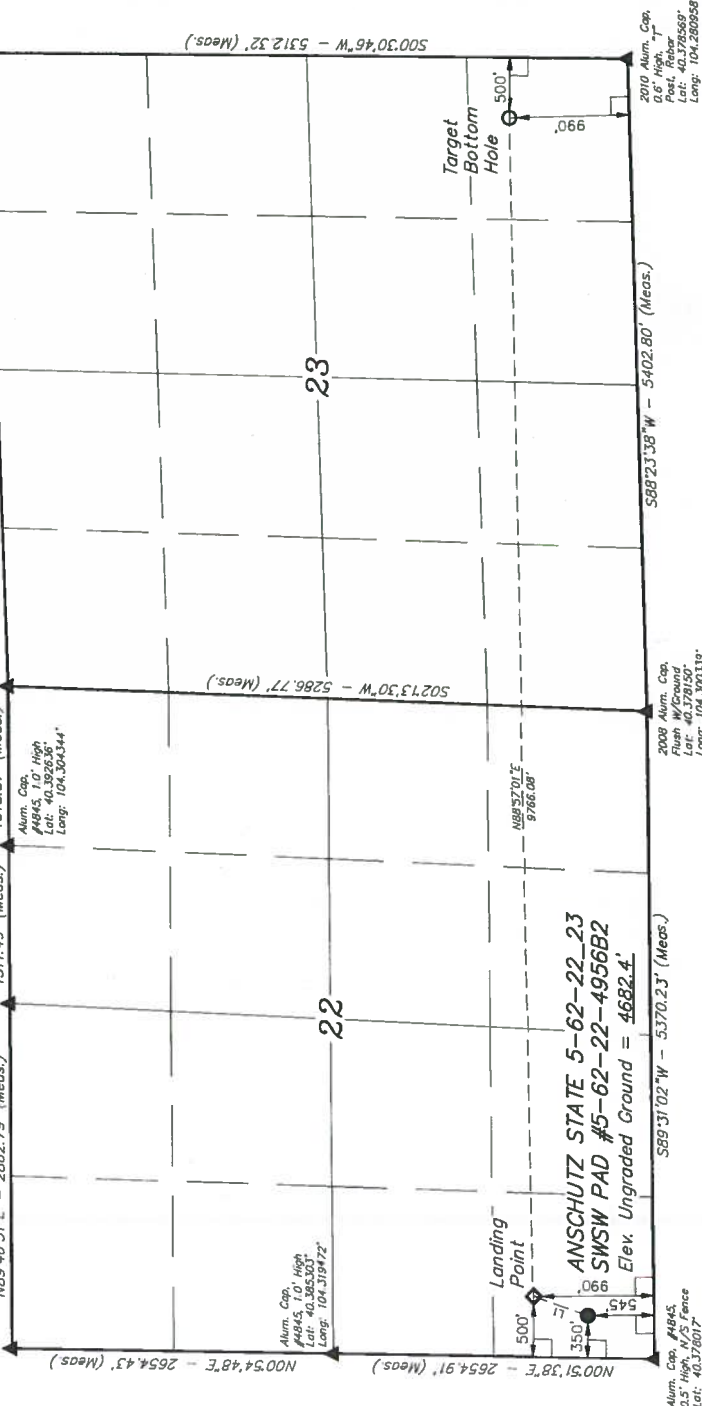
SPOT ELEVATION LOCATED AT THE NORTHEAST CORNER OF SECTION 24, T5N, R62W, 6th P.M. TAKEN FROM THE POINT OF ROCKS, QUADRANGLE, COLORADO, WELD COUNTY, 7.5 MINUTE QUAD (TOPOGRAPHIC MAP) PUBLISHED BY THE UNITED STATES DEPARTMENT OF THE INTERIOR, GEOLOGICAL SURVEY. SAID ELEVATION IS MARKED AS BEING 4530 FEET.

2010 Alum. Cap.
0.5' High
Fence Corner
Lat: 40.393147
Long: 104.280792

2008 Alum. Cap.
#22098, Flush W/ Ground,
Fence Corner
Lat: 40.393227
Long: 104.280611

Alum. Cap. #4845,
1.0' High, N/S Fence
Fence Corner
Lat: 40.393227
Long: 104.300000

Alum. Cap. #4845,
1.0' High, N/S Fence
Fence Corner
Lat: 40.393227
Long: 104.319422



LINE TABLE		
LINE	DIRECTION	LENGTH
L1	N18°21'42"E	473.03'



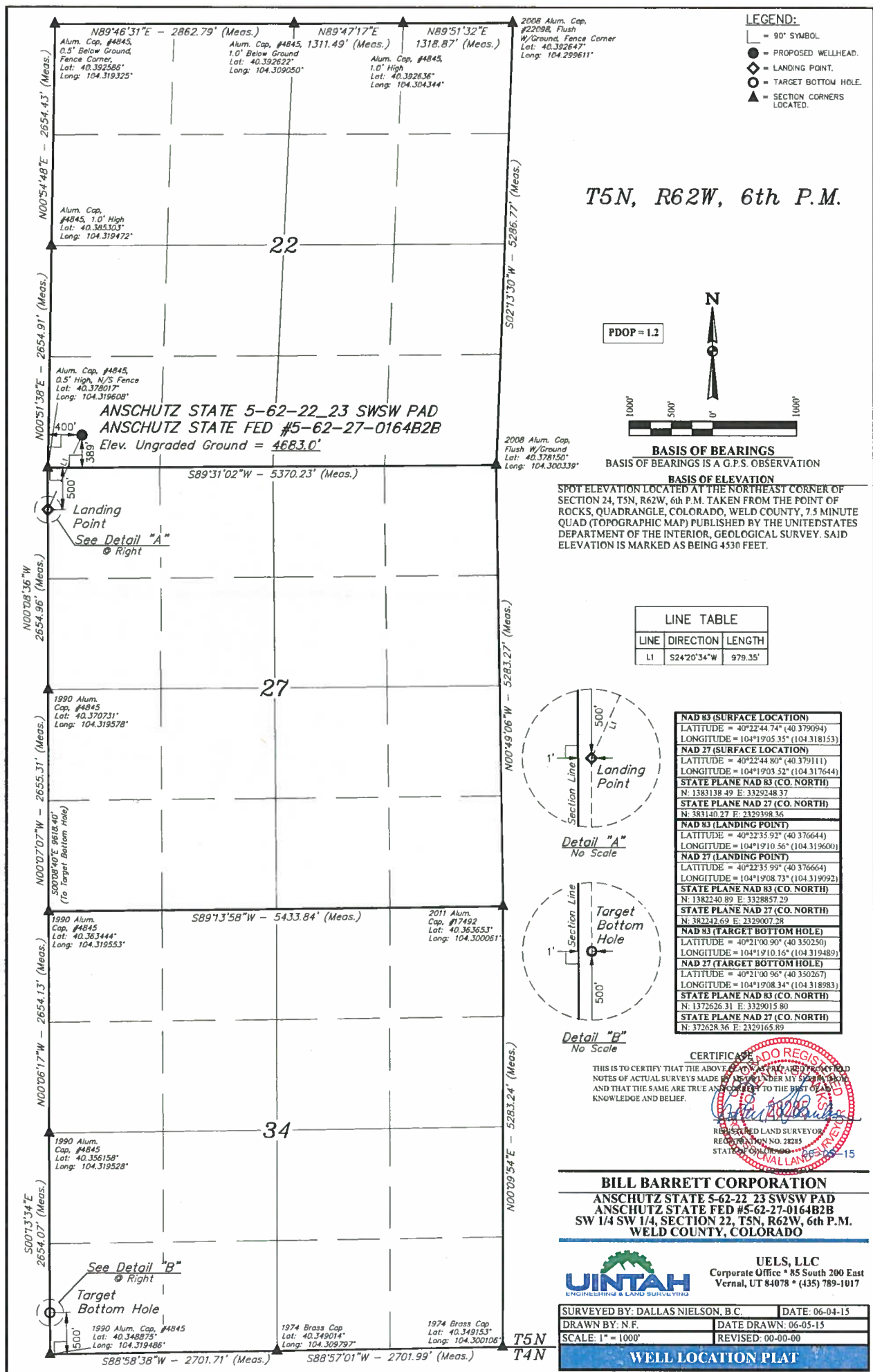
PDOP = 1.3

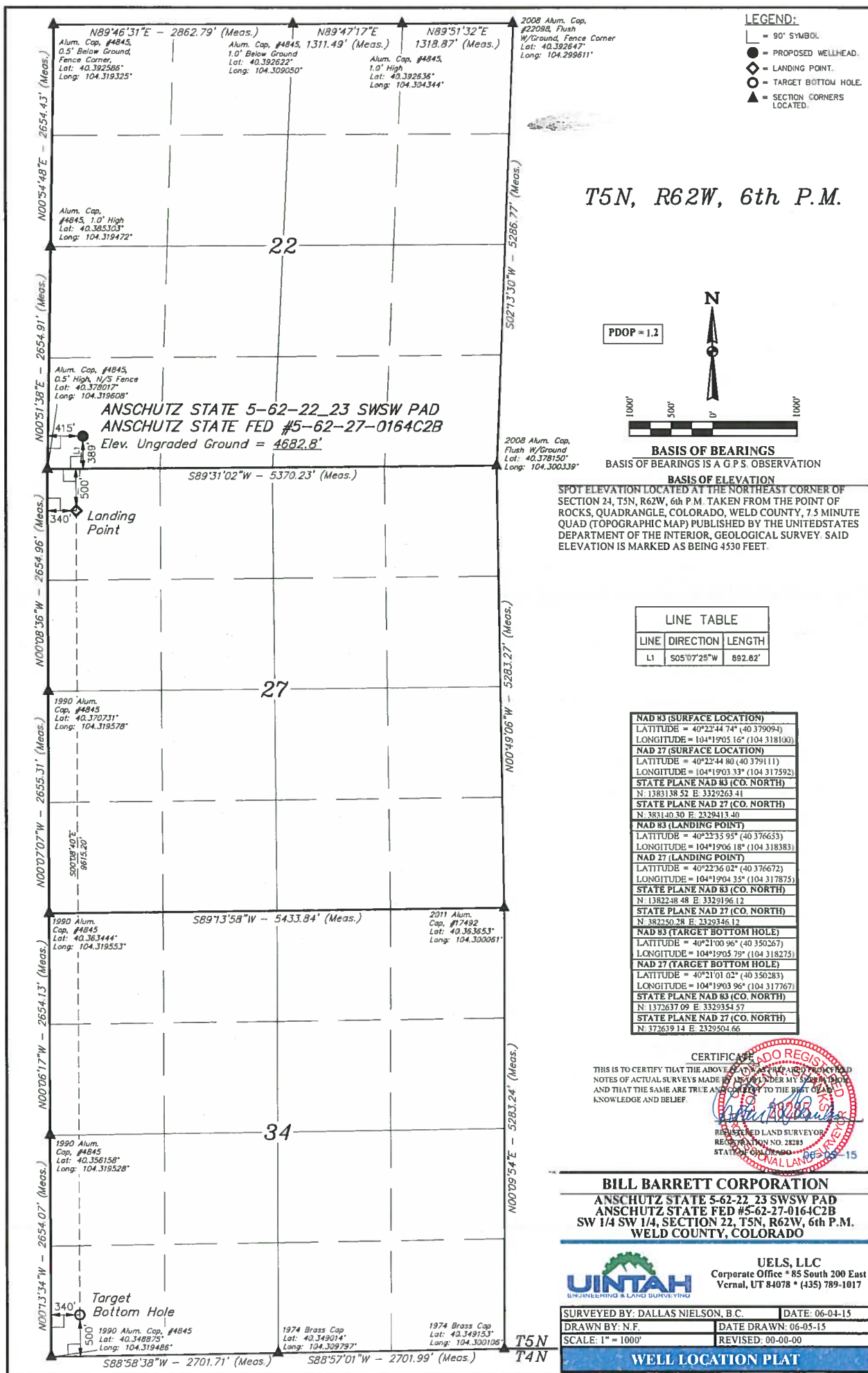
NAD 83 (SURFACE LOCATION)	
LATITUDE = 40°24'46.38" (40.379522)	
LONGITUDE = 104°19'03.95" (104.317764)	
NAD 83 (TARGET BOTTOM HOLE)	
LATITUDE = 40°24'46.38" (40.379522)	
LONGITUDE = 104°19'03.95" (104.317764)	
STATE PLANE NAD 83 (COLORADO NORTH)	
LATITUDE = 40°24'46.38" (40.379522)	
LONGITUDE = 104°19'03.95" (104.317764)	
STATE PLANE NAD 27 (COLORADO NORTH)	
LATITUDE = 40°24'46.38" (40.379522)	
LONGITUDE = 104°19'03.95" (104.317764)	

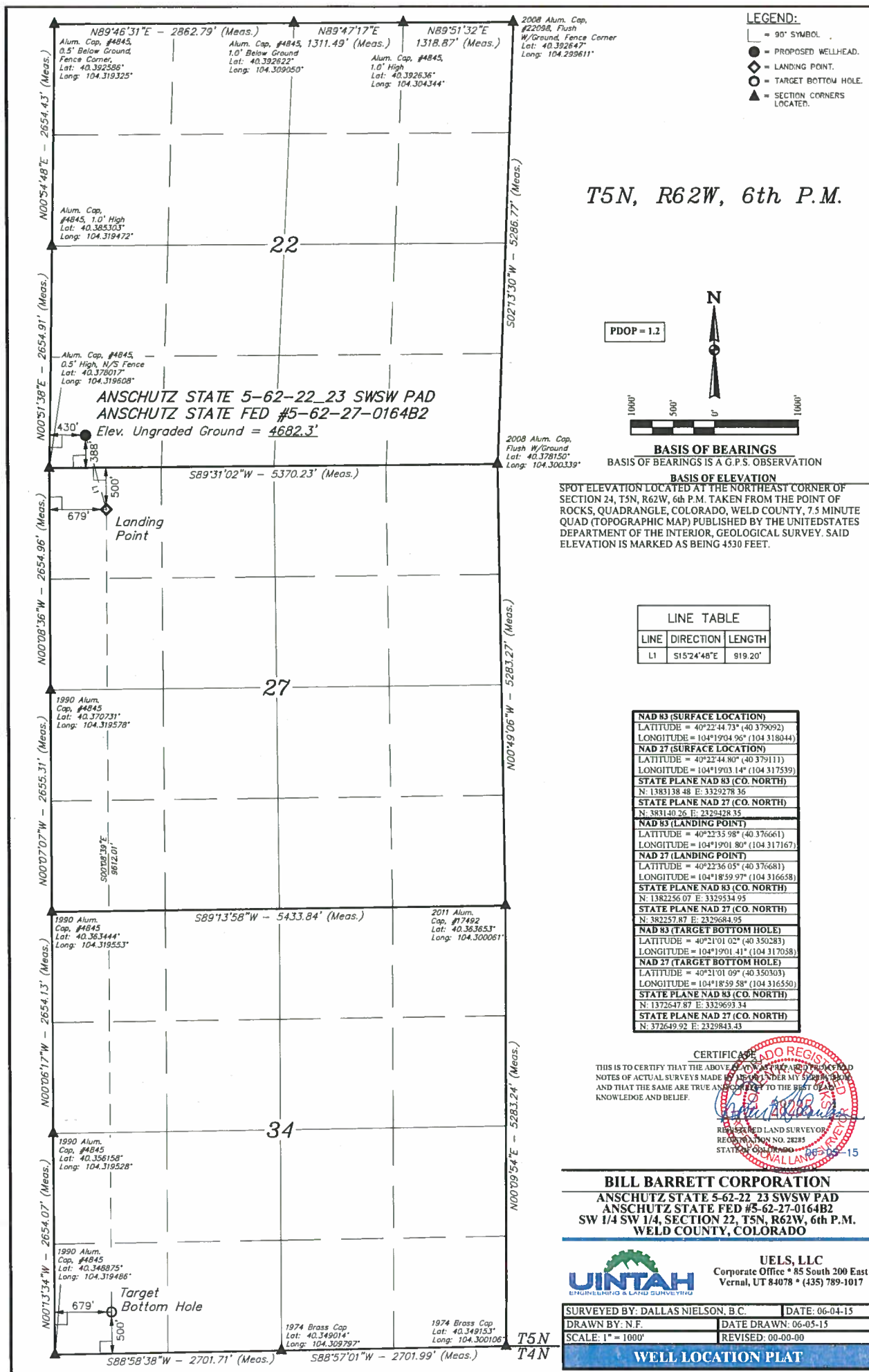
NAD 83 (TARGET BOTTOM HOLE)	
LATITUDE = 40°24'46.38" (40.379522)	
LONGITUDE = 104°19'03.95" (104.317764)	
NAD 27 (TARGET BOTTOM HOLE)	
LATITUDE = 40°24'46.38" (40.379522)	
LONGITUDE = 104°19'03.95" (104.317764)	
STATE PLANE NAD 83 (COLORADO NORTH)	
LATITUDE = 40°24'46.38" (40.379522)	
LONGITUDE = 104°19'03.95" (104.317764)	
STATE PLANE NAD 27 (COLORADO NORTH)	
LATITUDE = 40°24'46.38" (40.379522)	
LONGITUDE = 104°19'03.95" (104.317764)	

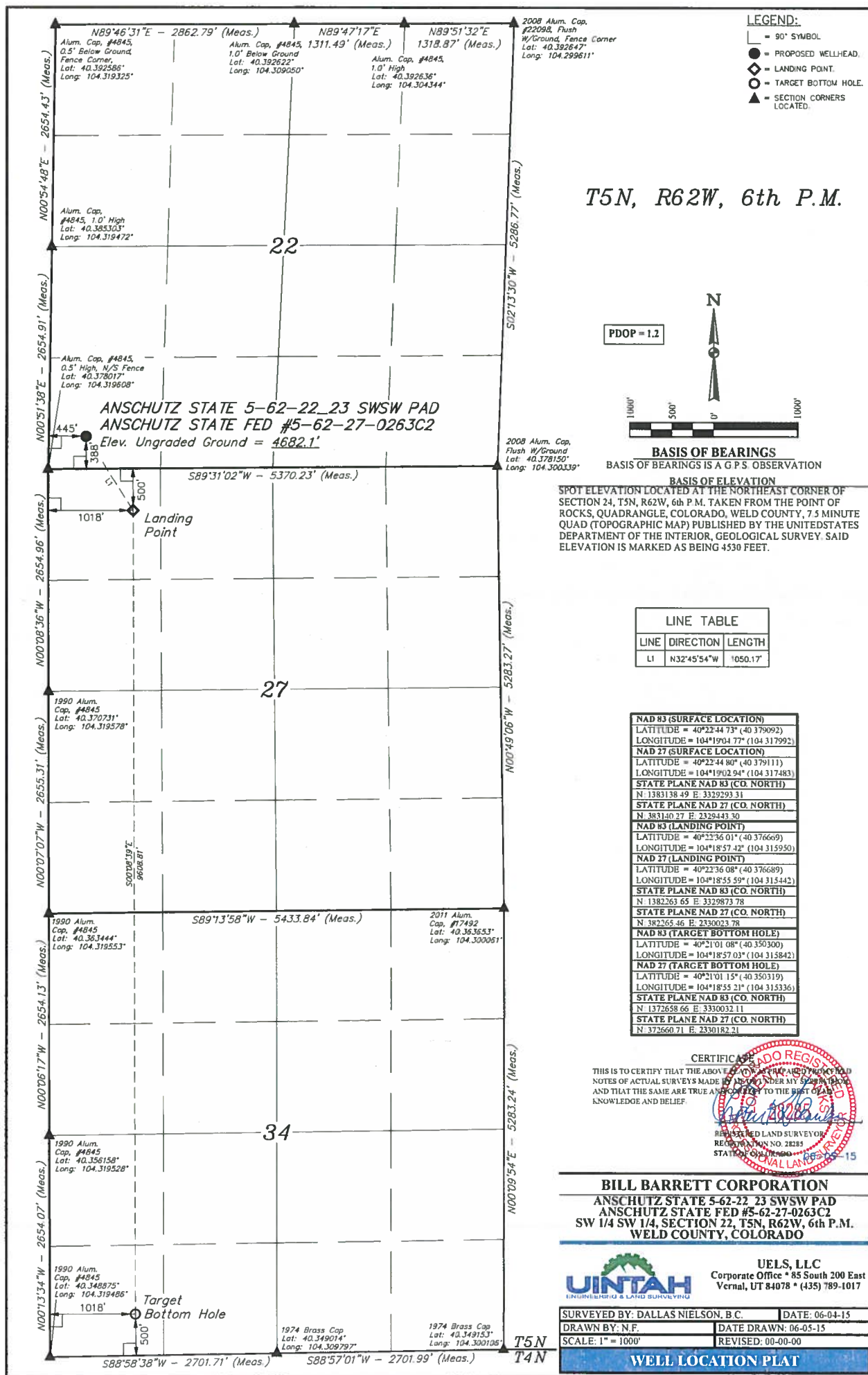
LEGEND:

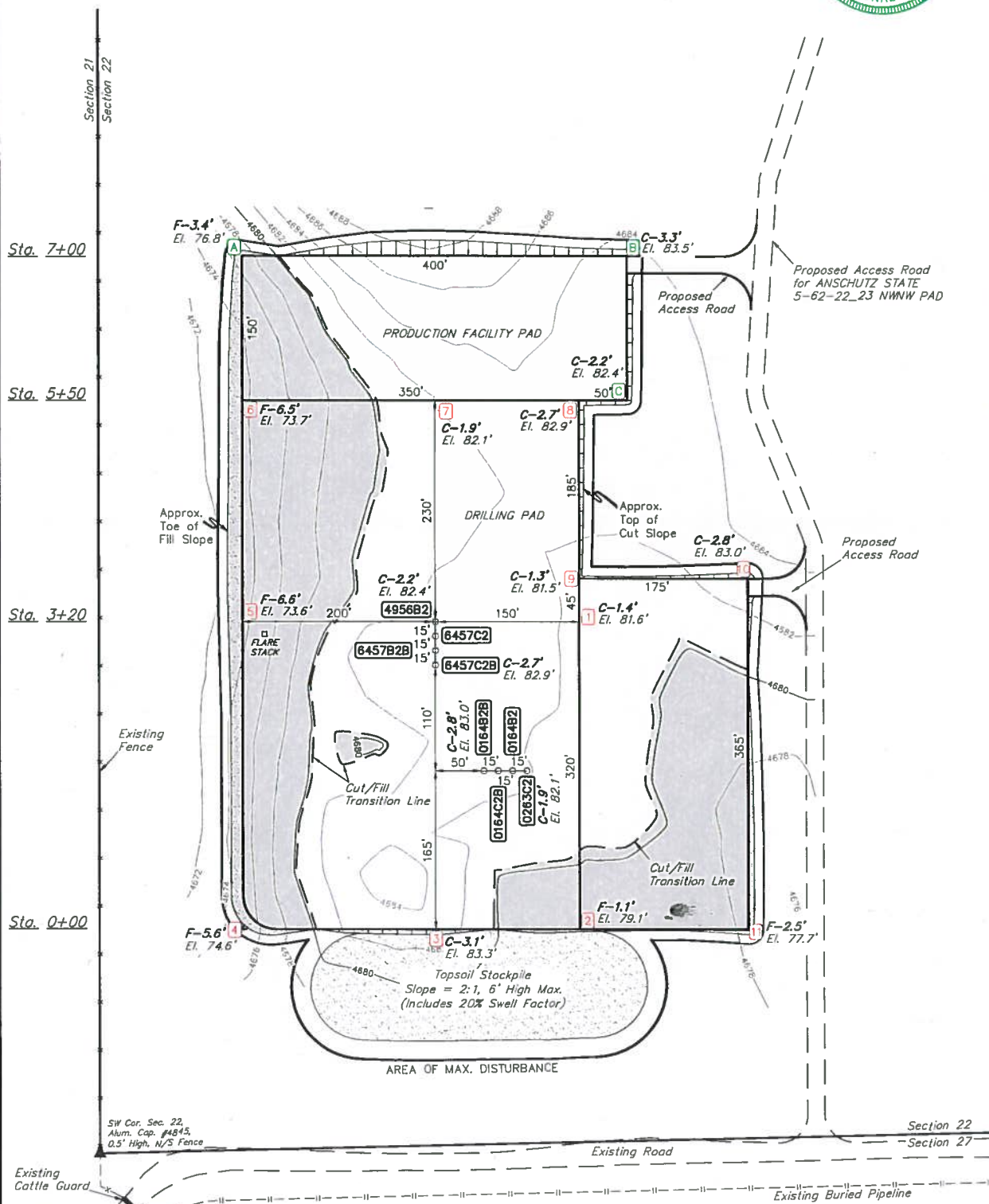
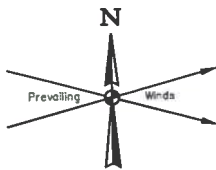
- 90° SYMBOL
- PROPOSED WELLHEAD
- TARGET BOTTOM HOLE
- LANDING POINT
- SECTION CORNERS LOCATED











FINISHED GRADE ELEVATION = 4680.2'

NOTES:

- Flare stack is to be located a min. of 100' from the wellhead.
- Round corners at 35' radius or as needed.
- Contours shown at 2' intervals.

BILL BARRETT CORPORATION

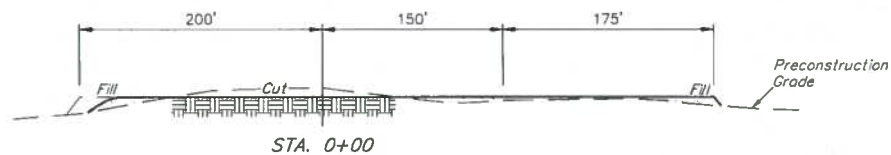
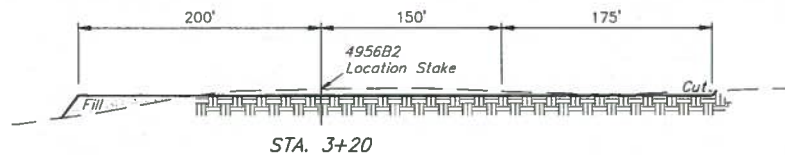
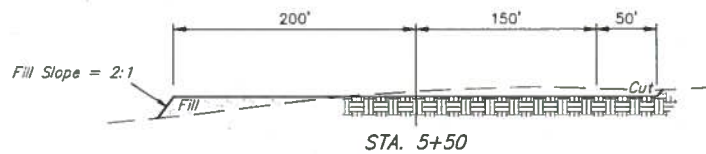
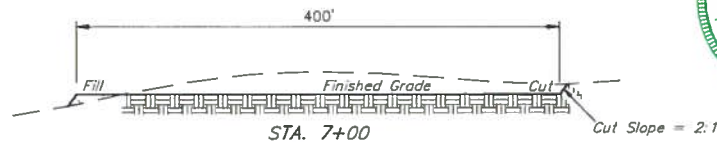
ANSCHUTZ STATE 5-62-22 23 SWSW PAD
ANSCHUTZ STATE #5-62-22-6457C2B, 6457B2B,
6457C2, 4956B2, ANSCHUTZ STATE FED
#5-62-27-0164B2B, 0164C2B, 0164B2 & 0263C2
SW 1/4 SW 1/4, SECTION 22, T5N, R62W, 6th P.M.
WELD COUNTY, COLORADO



UELLS, LLC
Corporate Office * 85 South 200 East
Vernal, UT 84078 * (435) 789-1017

DRAWN BY: K.B.	DATE DRAWN: 04-08-15
SCALE: 1" = 100'	REVISED: 06-23-15
CONSTRUCTION LAYOUT	FIGURE #1

1" = 40'
X-Section
Scale
1" = 100'



APPROXIMATE EARTHWORK QUANTITIES	
(6") TOPSOIL STRIPPING	6,220 Cu. Yds.
REMAINING LOCATION	12,880 Cu. Yds.
TOTAL CUT	19,100 Cu. Yds.
FILL	12,880 Cu. Yds.
EXCESS MATERIAL	6,220 Cu. Yds.
TOPSOIL	6,220 Cu. Yds.
EXCESS UNBALANCE (After Interim Rehabilitation)	0 Cu. Yds.

APPROXIMATE SURFACE DISTURBANCE AREAS		
	DISTANCE	ACRES
WELL SITE DISTURBANCE	NA	±9.325
35' WIDE ACCESS ROAD R-O-W DISTURBANCE	±212.64'	±0.171
25' WIDE PIPELINE R-O-W DISTURBANCE	±110.01'	±0.063
TOTAL SURFACE USE AREA		±9.559

NOTES:

- Fill quantity includes 5% for compaction.
- Calculations based on 6" of topsoil stripping.
- Topsoil should not be stripped below finished grade on substructure area.

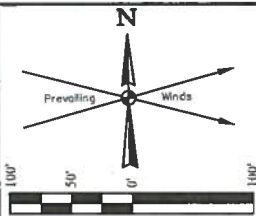
BILL BARRETT CORPORATION

ANSCHUTZ STATE #5-62-22 23 SWSW PAD
ANSCHUTZ STATE #5-62-22-6457C2B, 6457B2B,
6457C2, 4956B2, ANSCHUTZ STATE FED
#5-62-27-0164B2B, 0164C2B, 0164B2 & 0263C2
SW 1/4 SW 1/4, SECTION 22, T5N, R62W, 6th P.M.
WELD COUNTY, COLORADO

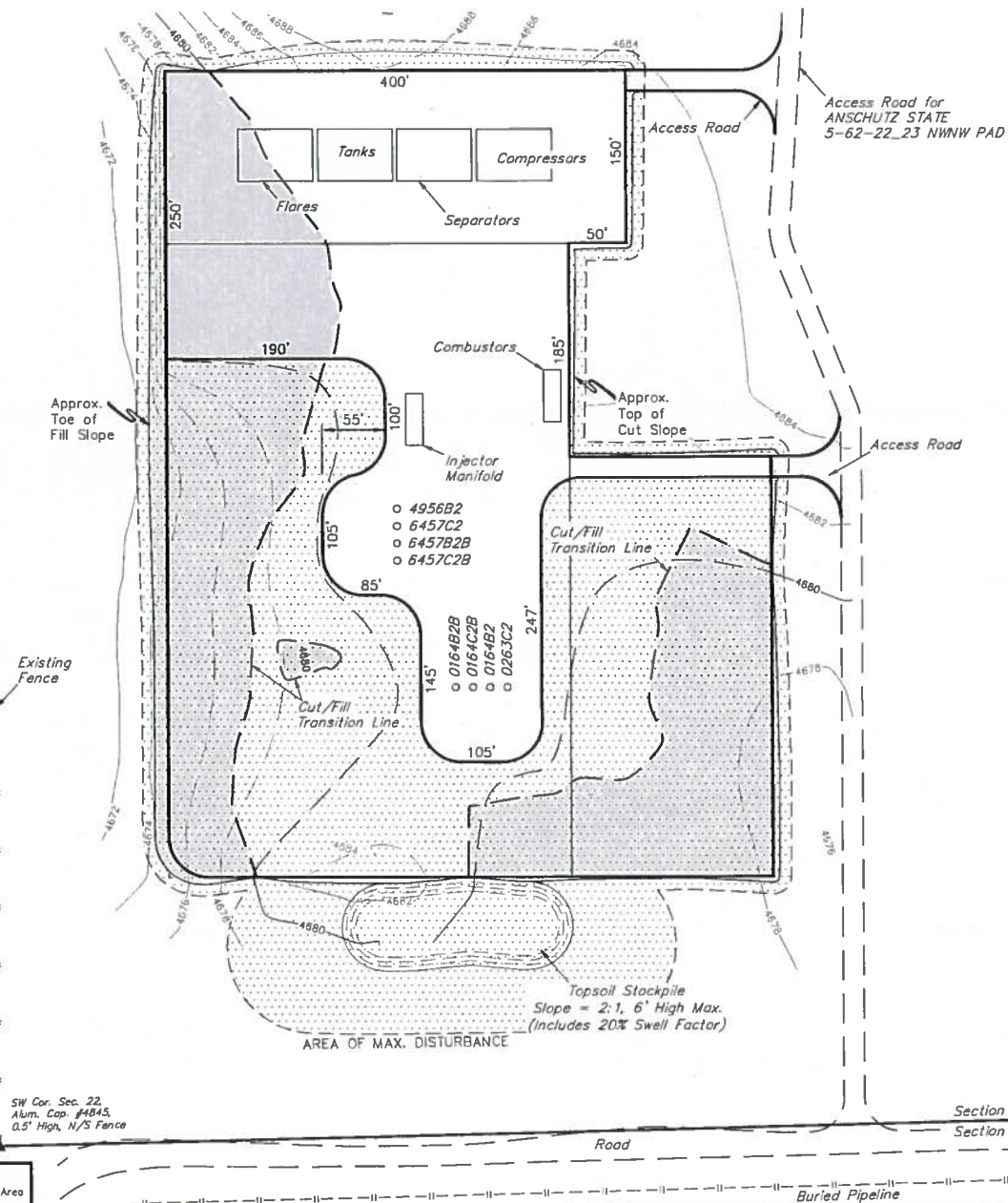


UELS, LLC
Corporate Office * 85 South 200 East
Vernal, UT 84078 * (435) 789-1017

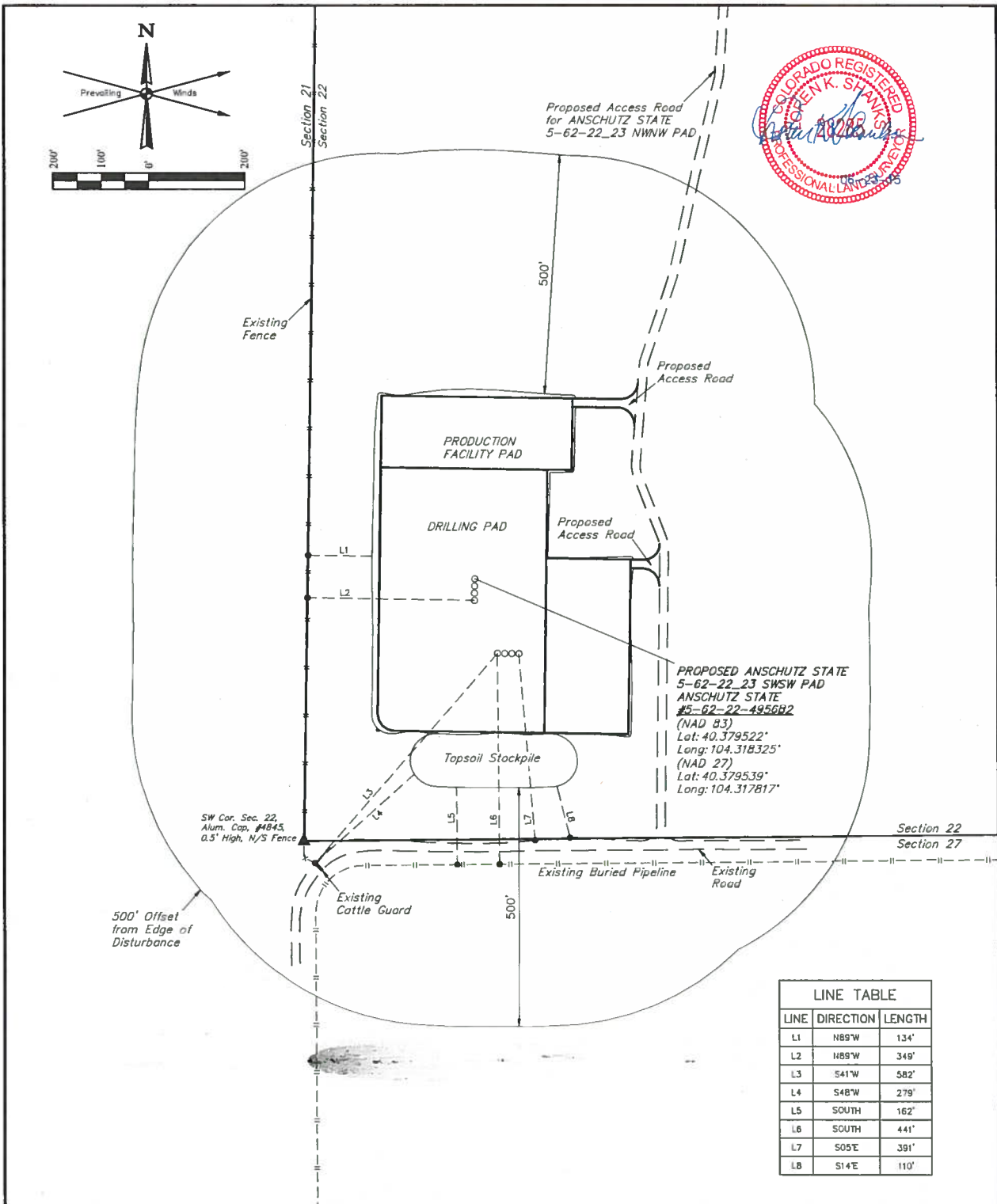
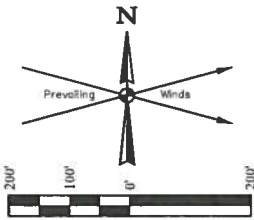
DRAWN BY: K.B.	DATE DRAWN: 04-08-15
SCALE: AS SHOWN	REVISED: 06-22-15
CONSTRUCTION LAYOUT CROSS SECTIONS	FIGURE #2



Section 21
Section 22



UELS, LLC
Corporate Office * 85 South 200 East
Vernal, UT 84078 * (435) 789-1017



PROPOSED ANSCHUTZ STATE
5-62-22_23 SWSW PAD
ANSCHUTZ STATE
#5-62-22-4956B2
(NAD 83)
Lat: 40.379522°
Long: 104.318325°
(NAD 27)
Lat: 40.379539°
Long: 104.317817°

LINE TABLE		
LINE	DIRECTION	LENGTH
L1	N89°W	134'
L2	N89°W	349'
L3	S41°W	582'
L4	S48°W	279'
L5	SOUTH	162'
L6	SOUTH	441'
L7	S05°E	391'
L8	S14°E	110'

PLANT COMMUNITY <input type="checkbox"/> DISTURBED GRASSLAND <input checked="" type="checkbox"/> NATIVE GRASSLAND <input type="checkbox"/> SHRUB LAND <input type="checkbox"/> PLAINS RIPARIAN <input type="checkbox"/> MOUNTAIN RIPARIAN <input type="checkbox"/> FOREST LAND <input type="checkbox"/> WETLANDS AQUATIC <input type="checkbox"/> ALPINE <input type="checkbox"/> OTHER (Describe):		CURRENT LAND USE CROP LAND: <input type="checkbox"/> IRRIGATED <input type="checkbox"/> DRY LAND <input type="checkbox"/> IMPROVED PASTURE <input type="checkbox"/> HAY MEADOW <input type="checkbox"/> CRP NON-CROP LAND: <input checked="" type="checkbox"/> RANGELAND <input type="checkbox"/> TIMBER <input type="checkbox"/> RECREATIONAL <input type="checkbox"/> OTHER (Describe) SUBDIVIDED: <input type="checkbox"/> INDUSTRIAL <input type="checkbox"/> COMMERCIAL <input type="checkbox"/> RESIDENTIAL			
FUTURE LAND USE CROP LAND: <input type="checkbox"/> IRRIGATED <input type="checkbox"/> DRY LAND <input type="checkbox"/> IMPROVED PASTURE <input type="checkbox"/> HAY MEADOW <input type="checkbox"/> CRP NON-CROP LAND: <input checked="" type="checkbox"/> RANGELAND <input type="checkbox"/> TIMBER <input type="checkbox"/> RECREATIONAL <input type="checkbox"/> OTHER (Describe) SUBDIVIDED: <input type="checkbox"/> INDUSTRIAL <input type="checkbox"/> COMMERCIAL <input type="checkbox"/> RESIDENTIAL					

BILL BARRETT CORPORATION
 ANSCHUTZ STATE 5-62-22_23 SWSW PAD
 ANSCHUTZ STATE #5-62-22-6457C2B, 6457B2B,
 6457C2, 4956B2, ANSCHUTZ STATE FED
 #5-62-27-0164B2B, 0164C2B, 0164B2 & 0263C2
 SW 1/4 SW 1/4, SECTION 22, T5N, R62W, 6th P.M.
 WELD COUNTY, COLORADO



UELS, LLC
 Corporate Office * 85 South 200 East
 Vernal, UT 84078 * (435) 789-1017

SURVEYED BY: DALLAS NIELSEN, B.C.	SURVEY DATE: 06-04-15
DRAWN BY: K.B.	DATE DRAWN: 04-08-15
SCALE: 1" = 200'	REVISED: 06-22-15
LOCATION DRAWING	FIGURE #4

BILL BARRETT CORPORATION

ANSCHUTZ STATE 5-62-22_23 SWSW PAD ANSCHUTZ STATE #5-62-22-6457C2B, 6457B2B, 6457C2, 4956B2, ANSCHUTZ STATE FED #5-62-27-0164B2B, 0164C2B, 0164B2 & 0263C2
SW 1/4 SW 1/4, SECTION 22, T5N, R62W, 6th P.M.

WELD COUNTY, COLORADO

DATE: 04-08-15 K.B.


REVISED DATE: 06-05-15 N.F.

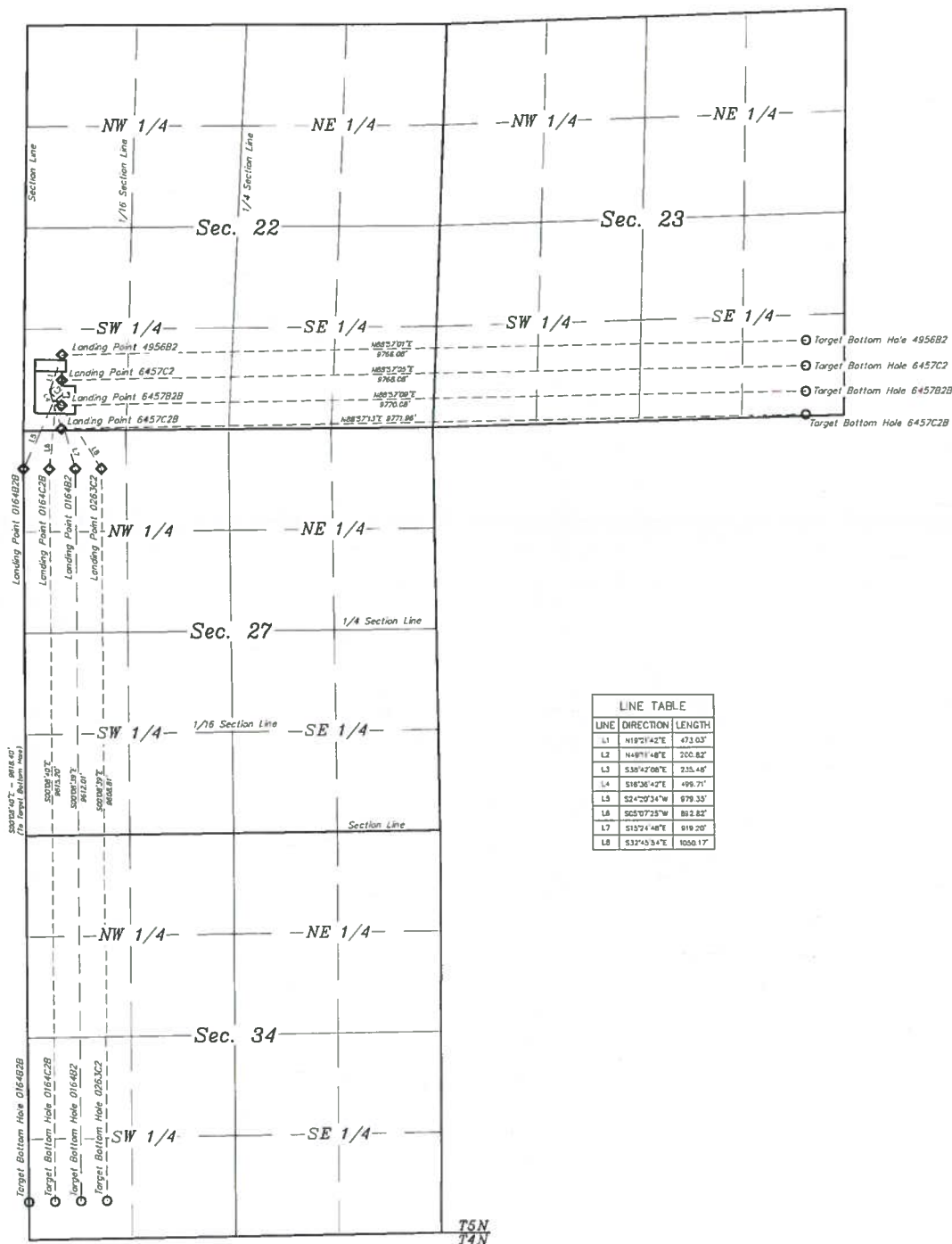
WELL NAME	BUILDING		BUILDING UNIT		HIGH OCCU. BUILDING		D.O.A.A.		PUBLIC ROAD		ABOVE GROUND UTILITY		RAILROAD		PROPERTY LINE	
	DIRECTION	LENGTH	DIRECTION	LENGTH	DIRECTION	LENGTH	DIRECTION	LENGTH	DIRECTION	LENGTH	DIRECTION	LENGTH	DIRECTION	LENGTH	DIRECTION	LENGTH
4956B2	OVER 1 MILE		OVER 1 MILE		OVER 1 MILE		OVER 1 MILE		OVER 1 MILE		OVER 1 MILE		OVER 1 MILE		N89°W	350'
6457C2	OVER 1 MILE		OVER 1 MILE		OVER 1 MILE		OVER 1 MILE		OVER 1 MILE		OVER 1 MILE		OVER 1 MILE		N89°W	350'
6457B2B	OVER 1 MILE		OVER 1 MILE		OVER 1 MILE		OVER 1 MILE		OVER 1 MILE		OVER 1 MILE		OVER 1 MILE		N89°W	350'
6457C2B	OVER 1 MILE		OVER 1 MILE		OVER 1 MILE		OVER 1 MILE		OVER 1 MILE		OVER 1 MILE		OVER 1 MILE		N89°W	350'
0164B2B	OVER 1 MILE		OVER 1 MILE		OVER 1 MILE		OVER 1 MILE		OVER 1 MILE		OVER 1 MILE		OVER 1 MILE		SOUTH	389'
0164C2B	OVER 1 MILE		OVER 1 MILE		OVER 1 MILE		OVER 1 MILE		OVER 1 MILE		OVER 1 MILE		OVER 1 MILE		SOUTH	389'
0164B2	OVER 1 MILE		OVER 1 MILE		OVER 1 MILE		OVER 1 MILE		OVER 1 MILE		OVER 1 MILE		OVER 1 MILE		SOUTH	388'
0263C2	OVER 1 MILE		OVER 1 MILE		OVER 1 MILE		OVER 1 MILE		OVER 1 MILE		OVER 1 MILE		OVER 1 MILE		SOUTH	388'

DISTANCES FROM WELLHEAD

PRODUCTION FEATURE	BUILDING		BUILDING UNIT		HIGH OCCU. BUILDING		D.O.A.A.		PUBLIC ROAD		ABOVE GROUND UTILITY		RAILROAD		PROPERTY LINE	
	DIRECTION	LENGTH	DIRECTION	LENGTH	DIRECTION	LENGTH	DIRECTION	LENGTH	DIRECTION	LENGTH	DIRECTION	LENGTH	DIRECTION	LENGTH	DIRECTION	LENGTH
PRODUCTION EQUIPMENT	OVER 1 MILE		OVER 1 MILE		OVER 1 MILE		OVER 1 MILE		OVER 1 MILE		OVER 1 MILE		OVER 1 MILE		N89°W	219'

DISTANCES FROM PRODUCTION EQUIPMENT

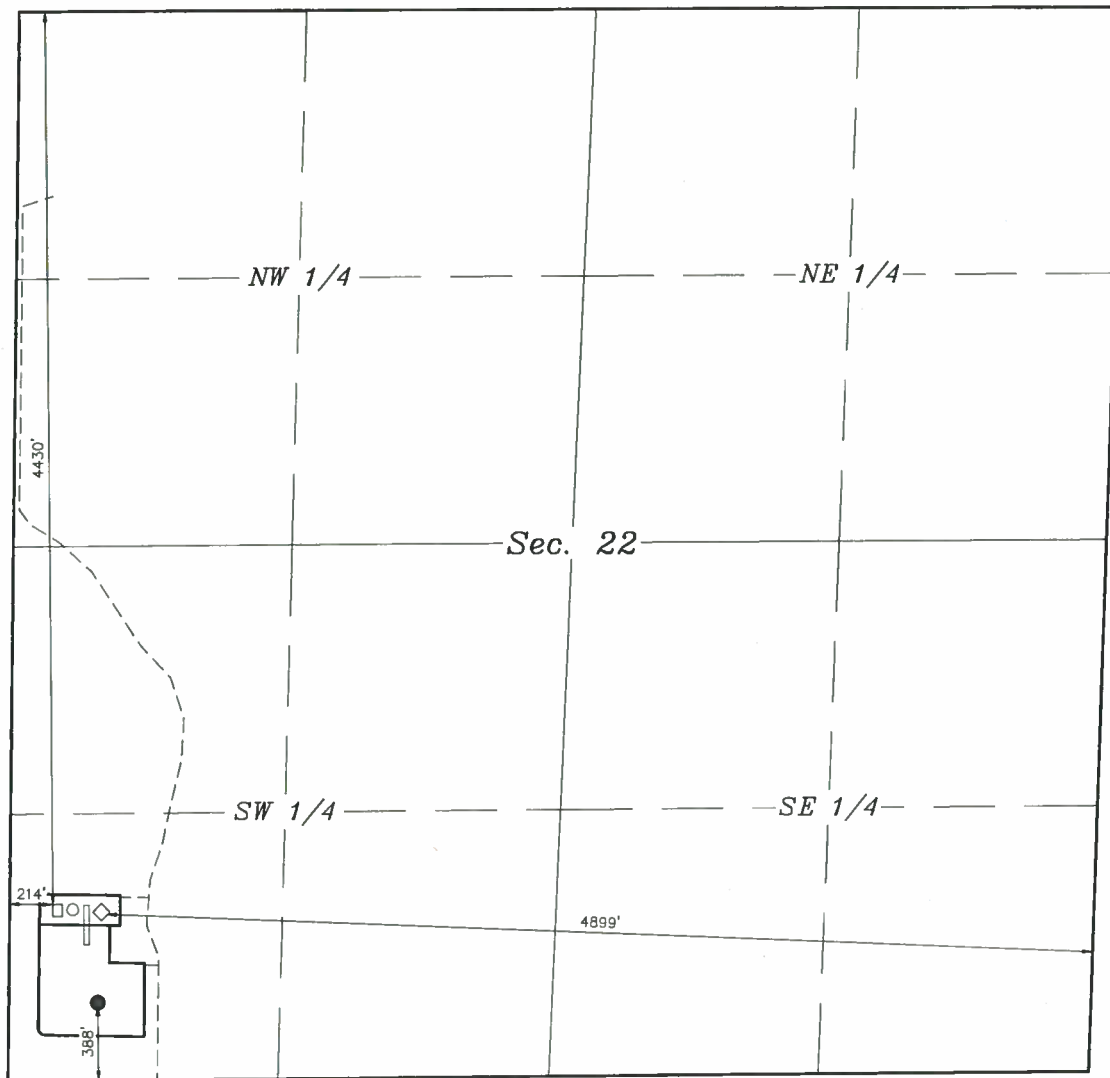
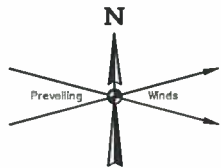
 = LANDING POINT
 = TARGET BOTTOM HOLE.



LINE	DIRECTION	LENGTH
L1	N18°21'42"E	473.03'
L2	N48°11'48"E	200.82'
L3	S38°42'08"E	235.48'
L4	S18°36'42"E	499.71'
L5	S24°20'34"W	979.35'
L6	S65°07'25"W	80.28'
L7	S15°24'48"E	919.20'
L8	S32°45'34"E	1050.17'

ANSCHUTZ STATE 5-62-22, 23 SWSW PAD
ANSCHUTZ STATE #5-62-22-6457C2B, 6457B2B,
6457C2, 4956B2, ANSCHUTZ STATE FED
#5-62-27-0164B2B, 0164C2B, 0164B2 & 0263C2
SW 1/4 SW 1/4, SECTION 22, T5N, R62W, 6th P.M.
WELD COUNTY, COLORADO

DRAWN BY: K.B.	DATE DRAWN: 04-08-15
SCALE: 1" = 100'	REVISED: 06-22-15
MULTI-WELL PLAN	FIGURE #5



ACCESS: BEGINNING AT THE JUNCTION OF COUNTY ROAD 87 AND COUNTY ROAD 89; PROCEED IN A NORTHERLY DIRECTION APPROXIMATELY 4.7 MILES TO JUNCTION OF THIS ROAD AND AN EXISTING ROAD TO THE WEST; TURN LEFT AND PROCEED IN A WESTERLY DIRECTION APPROXIMATELY 5.4 MILES TO THE BEGINNING OF THE PROPOSED ACCESS ROAD FOR THE ANSCHUTZ STATE 5-62-22, 23 NWNW PAD TO THE NORTH; FOLLOW ROAD FLAGS IN A NORTHERLY DIRECTION APPROXIMATELY 578' TO THE BEGINNING OF THE PROPOSED ACCESS ROAD TO THE WEST; FOLLOW ROAD FLAGS IN A WESTERLY DIRECTION APPROXIMATELY 183' TO THE PROPOSED LOCATION.

LEGEND:

- Separator ● Wellhead □ Combustor/Flare
--- Access ◇ Compressor ○ Production Tanks

BILL BARRETT CORPORATION

ANSCHUTZ STATE 5-62-22, 23 SWSW PAD
ANSCHUTZ STATE #5-62-22-6457C2B, 6457B2B,
6457C2, 4956B2, ANSCHUTZ STATE FED
#5-62-27-0164B2B, 0164C2B, 0164B2 & 0263C2
SW 1/4 SW 1/4, SECTION 22, T5N, R62W, 6th P.M.
WELD COUNTY, COLORADO



UELS, LLC
Corporate Office • 85 South 200 East
Vernal, UT 84078 • (435) 789-1017

DRAWN BY: K.B. DATE DRAWN: 04-08-15
SCALE: 1" = 600' REVISED: 06-22-15

PLOT PLAN FOR TANK BATTERY

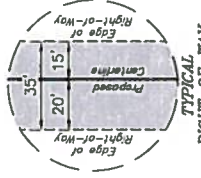
BILL BARRETT CORPORATION **ROAD RIGHT-OF-WAY ON** **STATE LANDS**

(FOR ANSCHUTZ STATE 5-62-22 23 SWSW PAD
 ANSCHUTZ STATE 5-62-22-23-23 SWSW PAD, 6457C2B, 6457B2B,
 6457C2, 4956B2, ANSCHUTZ STATE FED
 #5-62-27-0164B2B, 0164C2B, 0164B2 & 0263C2)

LOCATED IN
 SECTION 22, T5N, R62W, 6th P.M.
 WELD COUNTY, COLORADO

BASIS OF BEARINGS

BASIS OF BEARINGS IS A G.P.S. OBSERVATION



RIGHT-OF-WAY LENGTHS

PROPERTY OWNER	FEET	ACRES	RODS
STATE OF COLORADO (ROAD "A")	142.64	0.115	8.64
STATE OF COLORADO (ROAD "B")	70.00	0.056	4.24

BEGINNING OF ROAD "A" STA. 0+00 BEARS
 N37°42'37"E 1155.06' FROM THE SOUTHWEST
 CORNER OF SECTION 22, T5N, R62W, 6th P.M.
 END OF ROAD "A" STA. 1+42.64 BEARS
 N31°37'04"E 1075.61' FROM THE SOUTHWEST
 CORNER OF SECTION 22, T5N, R62W, 6th P.M.
 BEGINNING OF ROAD "B" STA. 0+00 BEARS
 N52°31'03"E 949.89' FROM THE SOUTHWEST
 CORNER OF SECTION 22, T5N, R62W, 6th P.M.
 END OF ROAD "B" STA. 0+70.00 BEARS
 N49°44'20"E 896.05' FROM THE SOUTHWEST
 CORNER OF SECTION 22, T5N, R62W, 6th P.M.

CERTIFICATE NO. 15
 THIS IS TO CERTIFY THAT THE ABOVE DESCRIBED RIGHT-OF-WAY HAS BEEN
 NOTES OF ACTUAL SURVEYS MADE BY THE SURVEYOR AND THAT THE SAME ARE TRUE AND CORRECT TO THE BEST OF HIS
 KNOWLEDGE AND BELIEF

UNREGISTERED LAND SURVEYOR
 J. L. BARRETT
 STATE OF COLORADO
 EXPIRATION DATE 12-31-15



UELS, LLC
 Corporate Office • 185 South 200 East
 Vernal, UT 84078 • (435) 789-1017

SURVEYED BY: K.B.	DATE: 06-04-15
DRAWN BY: K.B.	DATE DRAWN: 04-08-15
SCALE: 1" = 300'	FILE: 59316
REVISOR: 06-22-15	

ACCESS ROAD RIGHT-OF-WAY PLAT

Sec. 22

ROAD "A" RIGHT-OF-WAY DESCRIPTION

A 35' WIDE RIGHT-OF-WAY 20' ON THE LEFT SIDE AND 15' ON THE RIGHT SIDE OF THE FOLLOWING DESCRIBED CENTERLINE.

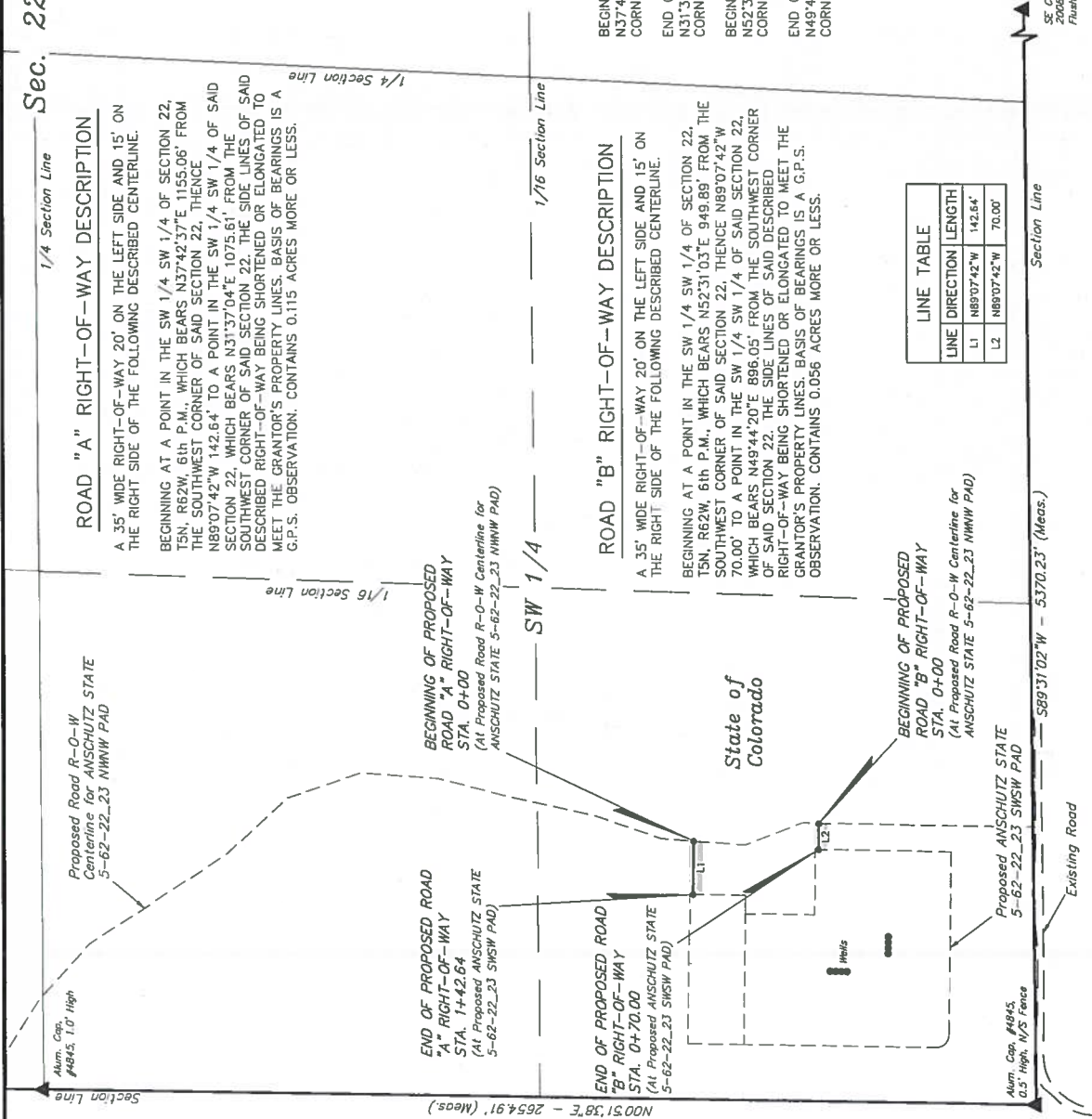
BEGINNING AT A POINT IN THE SW 1/4 SW 1/4 OF SECTION 22, T5N, R62W, 6th P.M., WHICH BEARS N37°42'37"E 1155.06' FROM THE SOUTHWEST CORNER OF SAID SECTION 22, THENCE N89°07'42"W 142.64' TO A POINT IN THE SW 1/4 SW 1/4 OF SAID SECTION 22, WHICH BEARS N31°37'04"E 1075.61' FROM THE SOUTHWEST CORNER OF SAID SECTION 22. THE SIDE LINES OF SAID DESCRIBED RIGHT-OF-WAY BEING SHORTENED OR ELONGATED TO MEET THE GRANTOR'S PROPERTY LINES. BASIS OF BEARINGS IS A G.P.S. OBSERVATION. CONTAINS 0.115 ACRES MORE OR LESS.

ROAD "B" RIGHT-OF-WAY DESCRIPTION

A 35' WIDE RIGHT-OF-WAY 20' ON THE LEFT SIDE AND 15' ON THE RIGHT SIDE OF THE FOLLOWING DESCRIBED CENTERLINE.

BEGINNING AT A POINT IN THE SW 1/4 SW 1/4 OF SECTION 22, T5N, R62W, 6th P.M., WHICH BEARS N52°31'03"E 949.89' FROM THE SOUTHWEST CORNER OF SAID SECTION 22, THENCE N89°07'42"W 70.00' TO A POINT IN THE SW 1/4 SW 1/4 OF SAID SECTION 22, WHICH BEARS N49°44'20"E 896.05' FROM THE SOUTHWEST CORNER OF SAID SECTION 22. THE SIDE LINES OF SAID DESCRIBED RIGHT-OF-WAY BEING SHORTENED OR ELONGATED TO MEET THE GRANTOR'S PROPERTY LINES. BASIS OF BEARINGS IS A G.P.S. OBSERVATION. CONTAINS 0.056 ACRES MORE OR LESS.

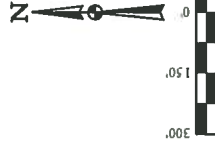
LINE	DIRECTION	LENGTH
L1	N89°07'42"W	142.64'
L2	N89°07'42"W	70.00'



LEGEND:
 P.I. = POINT OF INTERSECTION
 ▲ = SECTION CORNERS LOCATED.

PIPELINE RIGHT-OF-WAY ON STATE LANDS

BASIS OF BEARINGS



RIGHT-OF-WAY LENGTHS			
PROPERTY OWNER	FEET	ACRES	RODS
STATE OF COLORADO	11001	0.063	6.67

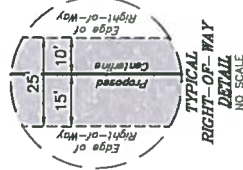
END OF PIPELINE STA. 1+10.01 BEARS
N39°59'12"E 1045.94' FROM THE SOUTHWEST
CORNER OF SECTION 22, T5N, R62W, 6th P.M.



UELS, LLC
Corporate Office • 85 South 200 East
Vernal, UT 84078 • (435) 789-1017

SURVEYED BY: DALLAS NIELSEN, B.C.		DATE: 06-14-15	
DRAWN BY: K.B.		DATE DRAWN: 04-08-15	
SCALE: 1" = 300'		FILE: 59327	
		REVISED: 06-22-15	

PIPELINE RIGHT-OF-WAY PLAT



1/4 Section Line

BEGINNING AT A POINT IN THE SW 1/4 SW 1/4 OF SECTION 22, T5N, R22W, 6th P.M., WHICH BEARS N35°05'42"E 977.73' FROM THE SOUTHWEST CORNER OF SAID SECTION 22, THENCE N89°15'45"E 110.01' TO A POINT IN THE SW 1/4 SW 1/4 OF SAID SECTION 22, WHICH BEARS N39°59'12"E 1045.94' FROM THE SOUTHWEST CORNER OF SAID SECTION 22, THE SIDE LINES OF SAID DESCRIBED RIGHT-OF-WAY BEING SHORTENED OR ELONGATED TO MEET THE GRANTOR'S PROPERTY LINES, BASIS OF BEARINGS IS A G.P.S. OBSERVATION, CONTAINS 0.063 ACRES MORE OR LESS.

LINE TABLE		
LINE	DIRECTION	LENGTH
11	N89°15'45"E	110.01'

- SW 1/4

END OF PROPOSED PIPELINE
RIGHT-OF-WAY
STA. 1+10.01
(At Proposed Pipeline R-0-W Centerline)
ANSCHUTZ STATE 5-62-22 23 NW

State of
Colorado

$589^{\circ}31'02''W - 5370.23' (Meas.)$

SE Cor. Sec. 22,
2008 Alum. Cop.
Flush W/Ground

LEGEND:
P.I. = POINT OF INTERSECTION
▲ = SECTION CORNERS LOCATED.

PROCEED IN AN EASTERLY, THEN SOUTHEASTERLY DIRECTION FROM GREELEY, COLORADO ALONG US HIGHWAY 34 APPROXIMATELY 25.4 MILES TO THE JUNCTION OF THIS ROAD AND COUNTY ROAD 87 TO THE NORTH; TURN LEFT AND PROCEED IN A NORTHERLY, THEN EASTERLY DIRECTION APPROXIMATELY 3.0 MILES TO THE JUNCTION OF THIS ROAD AND COUNTY ROAD 89 TO THE NORTH; TURN LEFT AND PROCEED IN A NORTHERLY DIRECTION APPROXIMATELY 4.7 MILES TO JUNCTION OF THIS ROAD AND AN EXISTING ROAD TO THE WEST; TURN LEFT AND PROCEED IN A WESTERLY DIRECTION APPROXIMATELY 5.4 MILES TO THE BEGINNING OF THE PROPOSED ACCESS ROAD FOR THE ANSCHUTZ STATE 5-62-22 23 NWNW PAD TO THE NORTH; FOLLOW ROAD FLAGS IN A NORTHERLY DIRECTION APPROXIMATELY 578' TO THE BEGINNING OF THE PROPOSED ACCESS ROAD TO THE WEST; FOLLOW ROAD FLAGS IN A WESTERLY DIRECTION APPROXIMATELY 70' TO THE PROPOSED LOCATION.

TOTAL DISTANCE FROM GREELEY, COLORADO TO THE PROPOSED LOCATION IS APPROXIMATELY 38.7 MILES.

BILL BARRETT CORPORATION

ANSCHUTZ STATE 5-62-22 23 SWSW PAD
ANSCHUTZ STATE #5-62-22-6457C2B, 6457B2B,
6457C2, 4956B2, ANSCHUTZ STATE FED
#5-62-27-0164B2B, 0164C2B, 0164B2 & 0263C2
SW 1/4 SW 1/4, SECTION 22, T5N, R62W, 6th P.M.
WELD COUNTY, COLORADO

DRAWN BY: J.L.G.

DATE DRAWN: 04-10-15

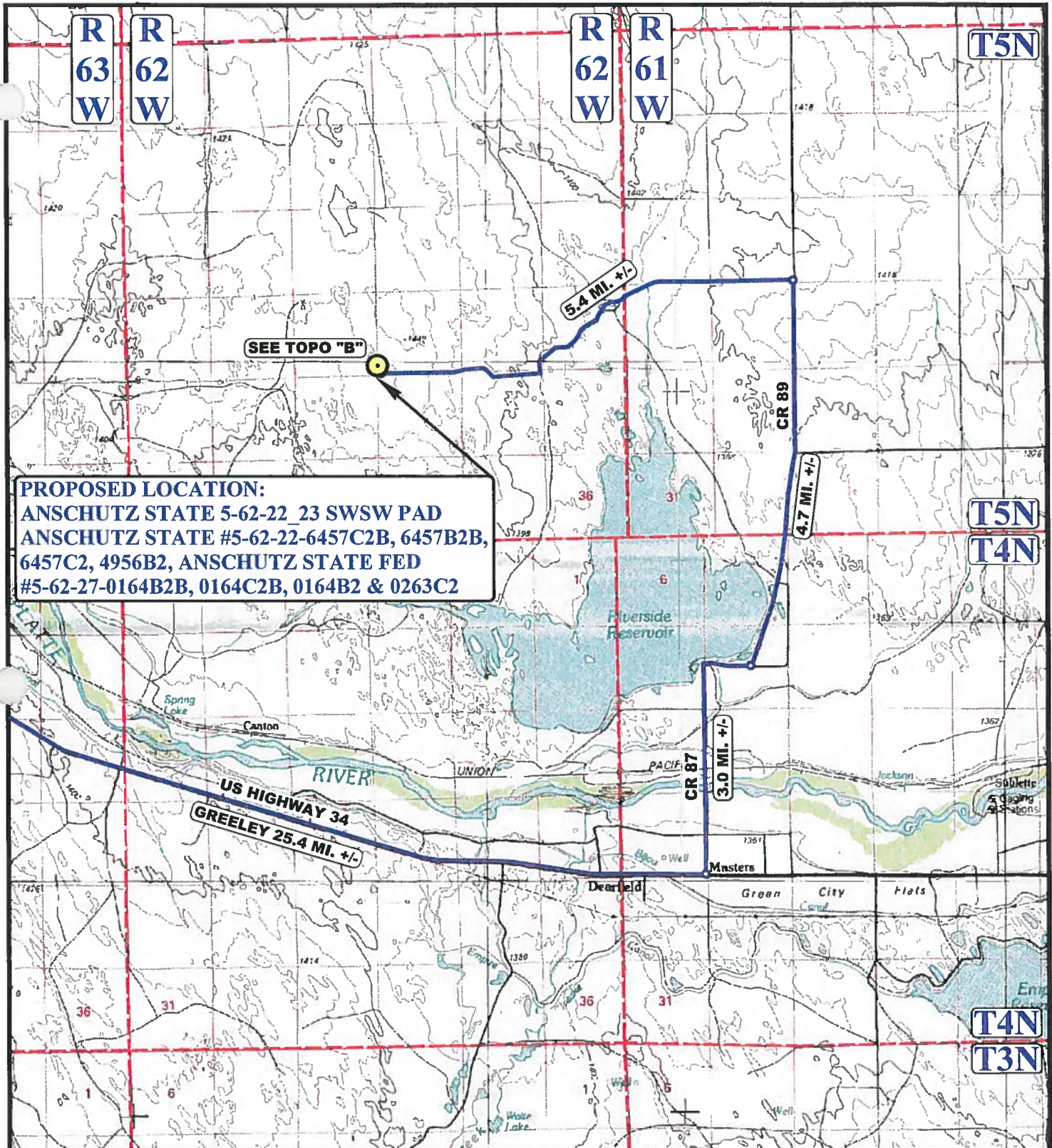
REV: 06-23-15



UELS, LLC

Corporate Office * 85 South 200 East
Vernal, UT 84078 * (435) 789-1017

ROAD DESCRIPTION



PROPOSED LOCATION:
 ANSCHUTZ STATE 5-62-22 23 SWSW PAD
 ANSCHUTZ STATE #5-62-22-6457C2B, 6457B2B,
 6457C2, 4956B2, ANSCHUTZ STATE FED
 #5-62-27-0164B2B, 0164C2B, 0164B2 & 0263C2

LEGEND:

● PROPOSED LOCATION

BILL BARRETT CORPORATION

ANSCHUTZ STATE 5-62-22 23 SWSW PAD
 ANSCHUTZ STATE #5-62-22-6457C2B, 6457B2B,
 6457C2, 4956B2, ANSCHUTZ STATE FED
 #5-62-27-0164B2B, 0164C2B, 0164B2 & 0263C2
 SW 1/4 SW 1/4, SECTION 22, T5N, R62W, 6th P.M.
 WELD COUNTY, COLORADO

DRAWN BY: J.L.G.

DATE DRAWN: 04-10-15

SCALE: 1:100,000

REV: 06-15-15

ACCESS ROAD MAP

TOPO A



UELS, LLC
 Corporate Office * 85 South 200 East
 Vernal, UT 84078 * (435) 789-1017



R
62
W

AS SURVEYED SECTION LINES

STATE OF
COLORADO

22
Solvency
4753
**PROPOSED ACCESS ROAD
FOR ANSCHUTZ STATE
5-62-22 23 NWNW PAD 578' +/-**

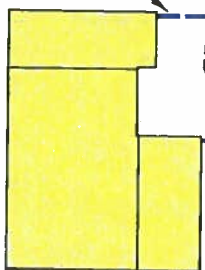
SEE DETAIL "A"

GREELEY 38.5 MI. +/-

PROPOSED LOCATION:

ANSCHUTZ STATE 5-62-22_23 SWSW PAD
ANSCHUTZ STATE #5-62-22-6457C2B, 6457B2B,
6457C2, 4956B2, ANSCHUTZ STATE FED
#5-62-27-0164B2B, 0164C2B, 0164B2 & 0263C2

**PROPOSED ACCESS
ROAD "A" 143' +/-**



**PROPOSED ACCESS
ROAD "B" 70' +/-**

DETAIL "A"

NOTE: PARCEL DATA SHOWN HAS BEEN OBTAINED FROM VARIOUS SOURCES AND SHOULD BE USED FOR MAPPING, GRAPHIC AND PLANNING PURPOSES ONLY. NO WARRANTY IS MADE BY UINTAH ENGINEERING AND LAND SURVEYING (UELS) FOR ACCURACY OF THE PARCEL DATA.

LEGEND:

- EXISTING ROAD
- - - PROPOSED ROAD
- - - PROPOSED ROAD
(SERVICING OTHER WELLS)

BILL BARRETT CORPORATION

ANSCHUTZ STATE 5-62-22 23 SWSW PAD
ANSCHUTZ STATE #5-62-22-6457C2B, 6457B2B,
6457C2, 4956B2, ANSCHUTZ STATE FED
#5-62-27-0164B2B, 0164C2B, 0164B2 & 0263C2
SW 1/4 SW 1/4, SECTION 22, T5N, R62W, 6th P.M.
WELD COUNTY, COLORADO

DRAWN BY: J.L.G.

DATE DRAWN: 04-10-15

SCALE: 1"=2000'

REV: 06-23-15

ACCESS ROAD MAP

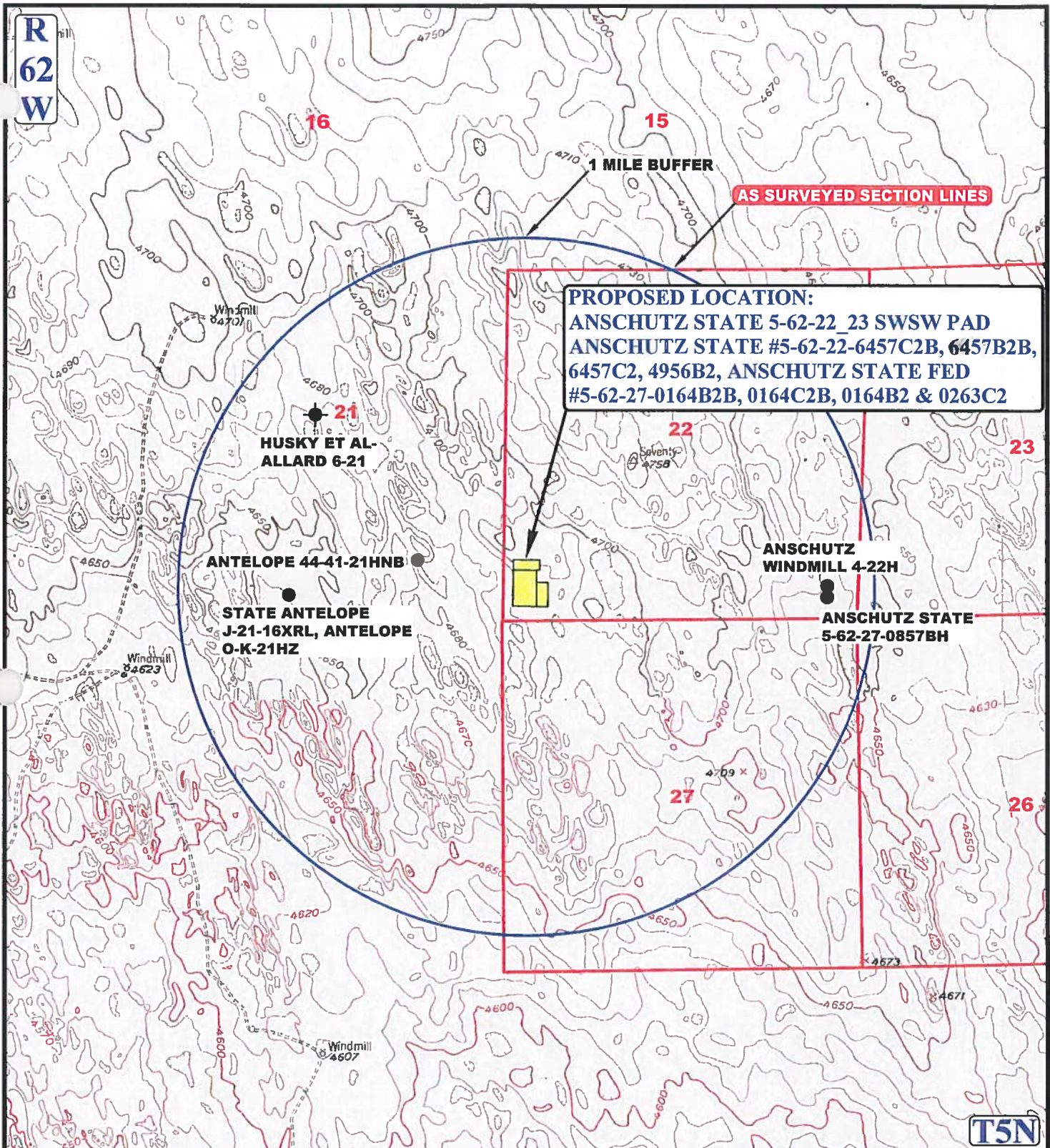
TOPO B



UELS, LLC
Corporate Office * 85 South 200 East
Vernal, UT 84078 * (435) 789-1017



**R
62
W**



PROPOSED LOCATION:
ANSCHUTZ STATE 5-62-22 23 SWSW PAD
ANSCHUTZ STATE #5-62-22-6457C2B, 6457B2B,
6457C2, 4956B2, ANSCHUTZ STATE FED
#5-62-27-0164B2B, 0164C2B, 0164B2 & 0263C2

LEGEND:

- ⊗ DISPOSAL WELLS
- PRODUCING WELLS
- SHUT IN WELLS
- ⊗ ABANDONED WELLS
- TEMPORARILY ABANDONED

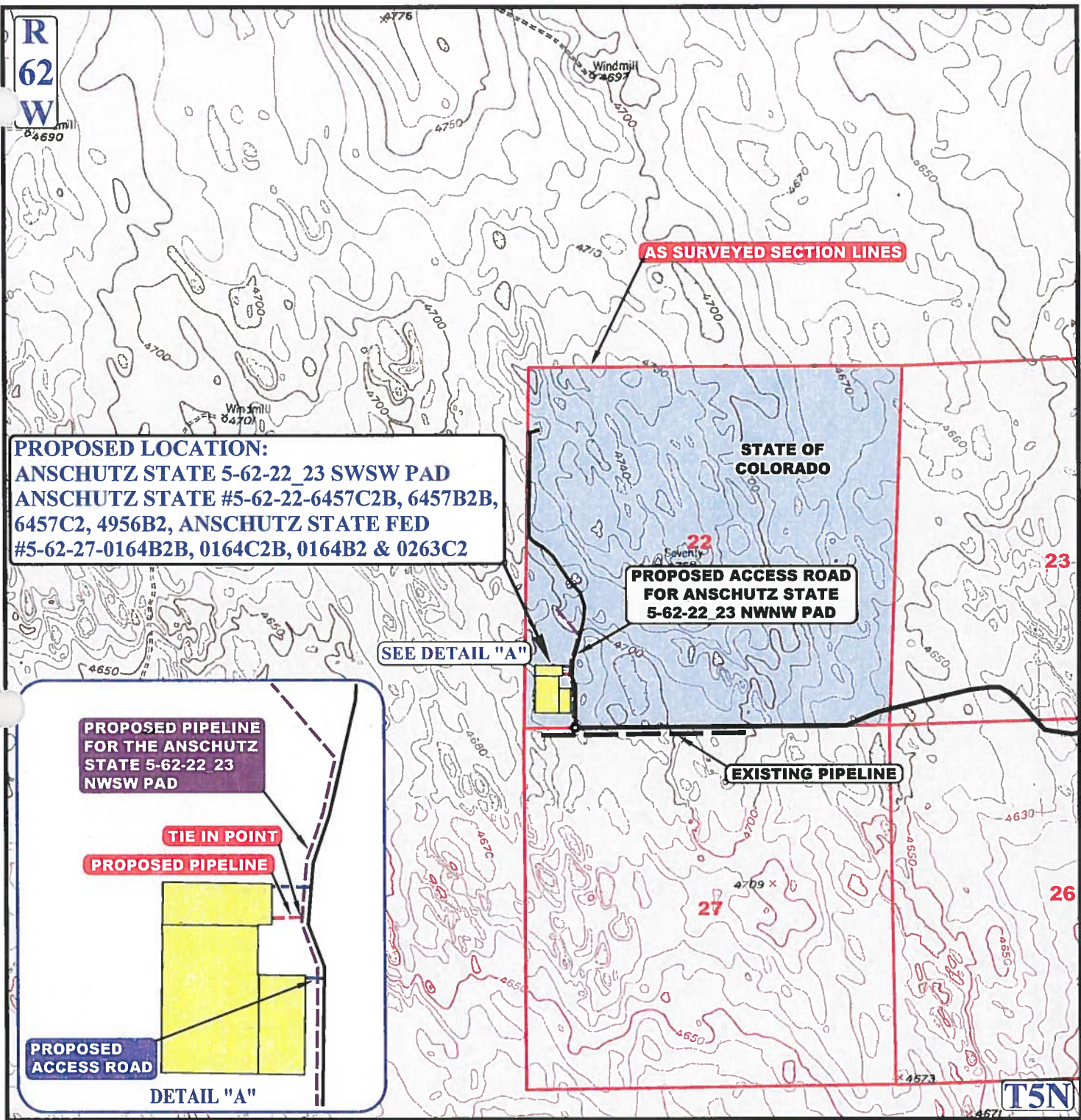


UELS, LLC
 Corporate Office * 85 South 200 East
 Vernal, UT 84078 * (435) 789-1017

BILL BARRETT CORPORATION

ANSCHUTZ STATE 5-62-22 23 SWSW PAD
ANSCHUTZ STATE #5-62-22-6457C2B, 6457B2B,
6457C2, 4956B2, ANSCHUTZ STATE FED
#5-62-27-0164B2B, 0164C2B, 0164B2 & 0263C2
SW 1/4 SW 1/4, SECTION 22, T5N, R62W, 6th P.M.
WELD COUNTY, COLORADO

DRAWN BY: J.L.G.	DATE DRAWN: 04-10-15
SCALE: 1" = 2000'	REV: 06-15-15
WELL PROXIMITY MAP	TOPO C



APPROXIMATE TOTAL PIPELINE DISTANCE = 110' +/-

NOTE: PARCEL DATA SHOWN HAS BEEN OBTAINED FROM VARIOUS SOURCES AND SHOULD BE USED FOR MAPPING, GRAPHIC AND PLANNING PURPOSES ONLY. NO WARRANTY IS MADE BY UINTAH ENGINEERING AND LAND SURVEYING (UELS) FOR ACCURACY OF THE PARCEL DATA.

LEGEND:

- EXISTING ROAD
- PROPOSED ROAD
- PROPOSED ROAD (SERVICING OTHER WELLS)
- EXISTING PIPELINE
- PROPOSED PIPELINE
- PROPOSED PIPELINE (SERVICING OTHER WELLS)



UELS, LLC
Corporate Office * 85 South 200 East
Vernal, UT 84078 * (435) 789-1017



DRAWN BY: J.L.G.	DATE DRAWN: 04-10-15
SCALE: 1"=2000'	REV: 06-23-15
PIPELINE MAP	TOPO D

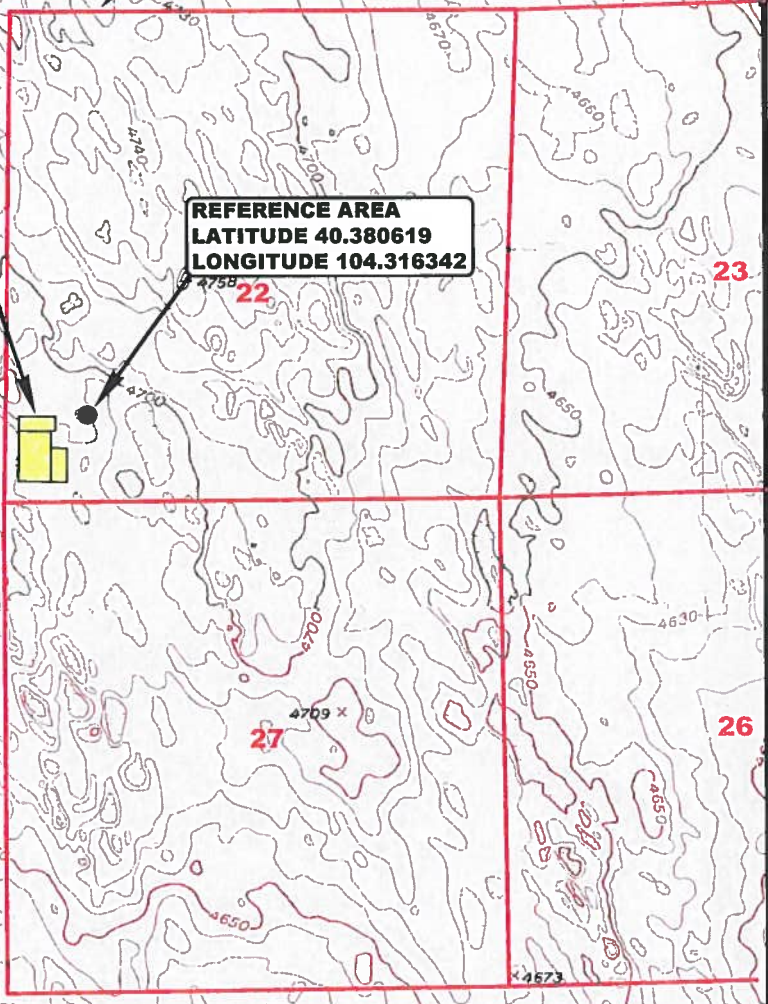
BILL BARRETT CORPORATION
ANSCHUTZ STATE 5-62-22 23 SWSW PAD
ANSCHUTZ STATE #5-62-22-6457C2B, 6457B2B,
6457C2, 4956B2, ANSCHUTZ STATE FED
#5-62-27-0164B2B, 0164C2B, 0164B2 & 0263C2
SW 1/4 SW 1/4, SECTION 22, T5N, R62W, 6th P.M.
WELD COUNTY, COLORADO

R
62
W

AS SURVEYED SECTION LINES

PROPOSED LOCATION:
ANSCHUTZ STATE 5-62-22 23 SWSW PAD
ANSCHUTZ STATE #5-62-22-6457C2B, 6457B2B,
6457C2, 4956B2, ANSCHUTZ STATE FED
#5-62-27-0164B2B, 0164C2B, 0164B2 & 0263C2

REFERENCE AREA
LATITUDE 40.380619
LONGITUDE 104.316342



LEGEND:

BILL BARRETT CORPORATION
ANSCHUTZ STATE 5-62-22 23 SWSW PAD
ANSCHUTZ STATE #5-62-22-6457C2B, 6457B2B,
6457C2, 4956B2, ANSCHUTZ STATE FED
#5-62-27-0164B2B, 0164C2B, 0164B2 & 0263C2
SW 1/4 SW 1/4, SECTION 22, T5N, R62W, 6th P.M.
WELD COUNTY, COLORADO



UELS, LLC
Corporate Office * 85 South 200 East
Vernal, UT 84078 * (435) 789-1017

DRAWN BY: J.L.G.	DATE DRAWN: 04-09-15
SCALE: 1" = 2000'	REV: 06-15-15
REFERENCE AREA MAP	REF TOPO



PHOTO: VIEW OF REFERENCE AREA

CAMERA ANGLE: NORTHERLY



PHOTO: VIEW OF REFERENCE AREA

CAMERA ANGLE: EASTERLY

BILL BARRETT CORPORATION

ANSCHUTZ STATE 5-62-22 23 SWSW PAD
ANSCHUTZ STATE #5-62-22-6457C2B, 6457B2B,
6457C2, 4956B2, ANSCHUTZ STATE FED
#5-62-27-0164B2B, 0164C2B, 0164B2 & 0263C2
SW 1/4 SW 1/4, SECTION 22, T5N, R62W, 6th P.M.
WELD COUNTY, COLORADO

DRAWN BY: J.L.G.

DATE DRAWN: 04-10-15

TAKEN BY: D.N.

REV: 06-15-15

REFERENCE AREA PHOTOS

REF 1



UELS, LLC
Corporate Office * 85 South 200 East
Vernal, UT 84078 * (435) 789-1017



PHOTO: VIEW OF REFERENCE AREA

CAMERA ANGLE: SOUTHERLY



PHOTO: VIEW OF REFERENCE AREA

CAMERA ANGLE: WESTERLY

BILL BARRETT CORPORATION

ANSCHUTZ STATE 5-62-22 23 SWSW PAD
ANSCHUTZ STATE #5-62-22-6457C2B, 6457B2B,
6457C2, 4956B2, ANSCHUTZ STATE FED
#5-62-27-0164B2B, 0164C2B, 0164B2 & 0263C2
SW 1/4 SW 1/4, SECTION 22, T5N, R62W, 6th P.M.
WELD COUNTY, COLORADO

DRAWN BY: J.L.G.

DATE DRAWN: 04-10-15

TAKEN BY: D.N.

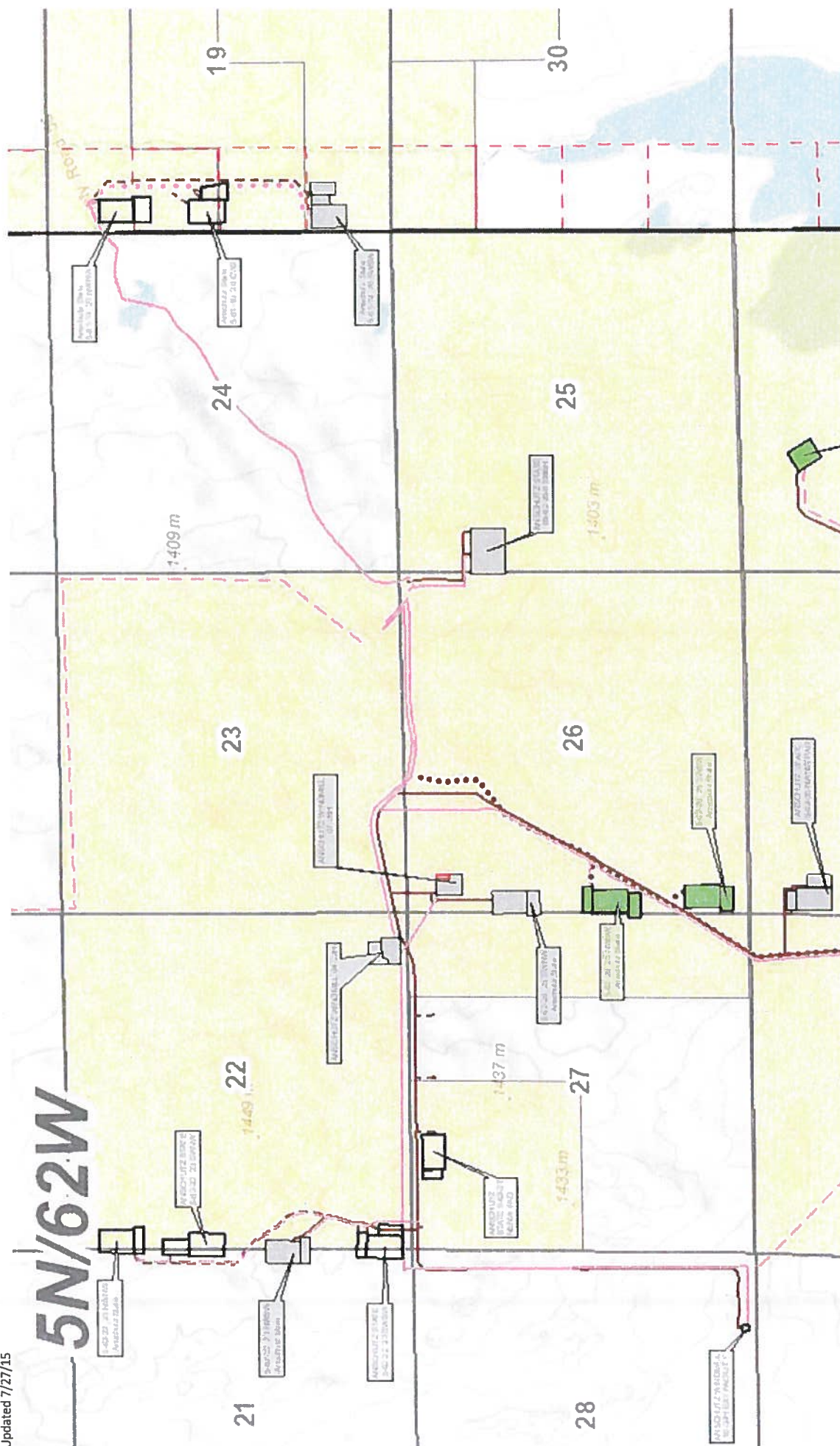
REV: 06-15-15

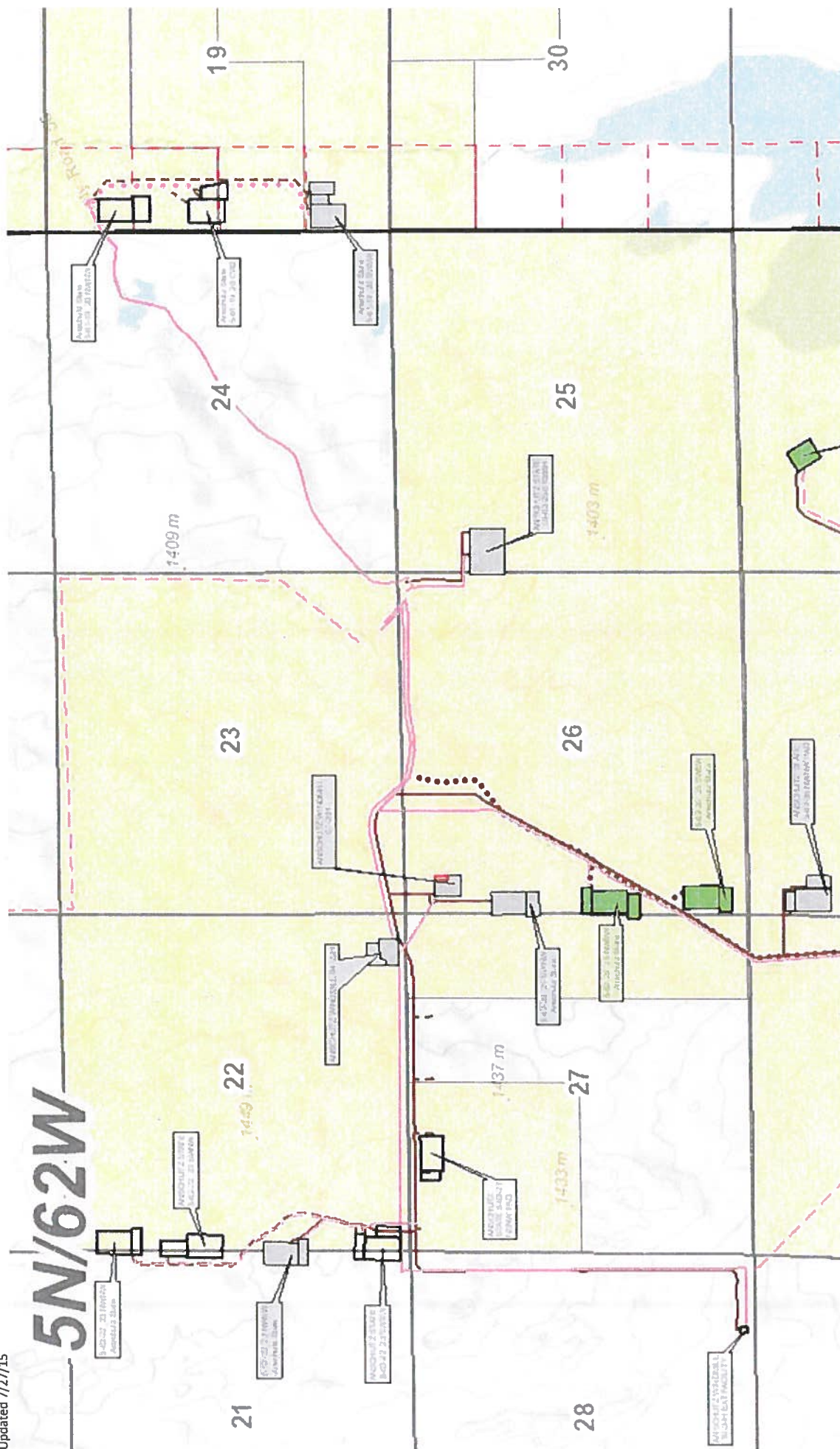
REFERENCE AREA PHOTOS

REF 2



UELS, LLC
Corporate Office * 85 South 200 East
Vernal, UT 84078 * (435) 789-1017







November 5, 2015

Colorado State Land Board
Attention: Pete Milonas
1127 Sherman Street, Suite 300
Denver, CO 80203

RE: Surface Location Exception Waiver
Rule 318A.a and Rule 318A.c
Anschutz State 5-62-22_23 SWSW Well Pad (SHL: SWSW, Sec 22, T5N-R62W)
Weld County, Colorado

Dear Mr. Milonas:

Bill Barrett Corporation ("BBC") is planning to drill the wells on Exhibit A from the above mentioned well pads. Rule 318A.a of the Colorado Oil and Gas Conservation Commission's ("COGCC") rules and regulations requires that each well be drilled within a square four hundred (400) feet in length, the center of which is the center of any quarter/quarter section, or a square with sides eight hundred (800) feet in length, the center of which is the center of any quarter section (the "GWA Windows"). The surface location of BBC's proposed well(s) has been staked outside of the 318A.a GWA Windows and therefore a waiver is needed to satisfy this requirement.

In addition, Rule 318A.c requires that new well locations be "twinned" (located within 50 feet) of an existing well, when such wells exist.

By signing this Surface Location Exception, you hereby waive requirements to comply with COGCC Rule 318A.a and Rule 318A.c where applicable, for wells within the surface locations described above. If you have any questions, please contact me at 303-312-8745 or via email at jmihalcin@billbarrettcorp.com.

Sincerely,
BILL BARRETT CORPORATION



Justin Mihalcin
Landman



Bill Barrett Corporation

Rule 318A.a and Rule 318A.c Surface Location Exception Waiver

I hereby waive the above requirement for all wells on the above described well pad surface locations effective the date executed below.

Colorado State Land Board

By: Pete Maloney

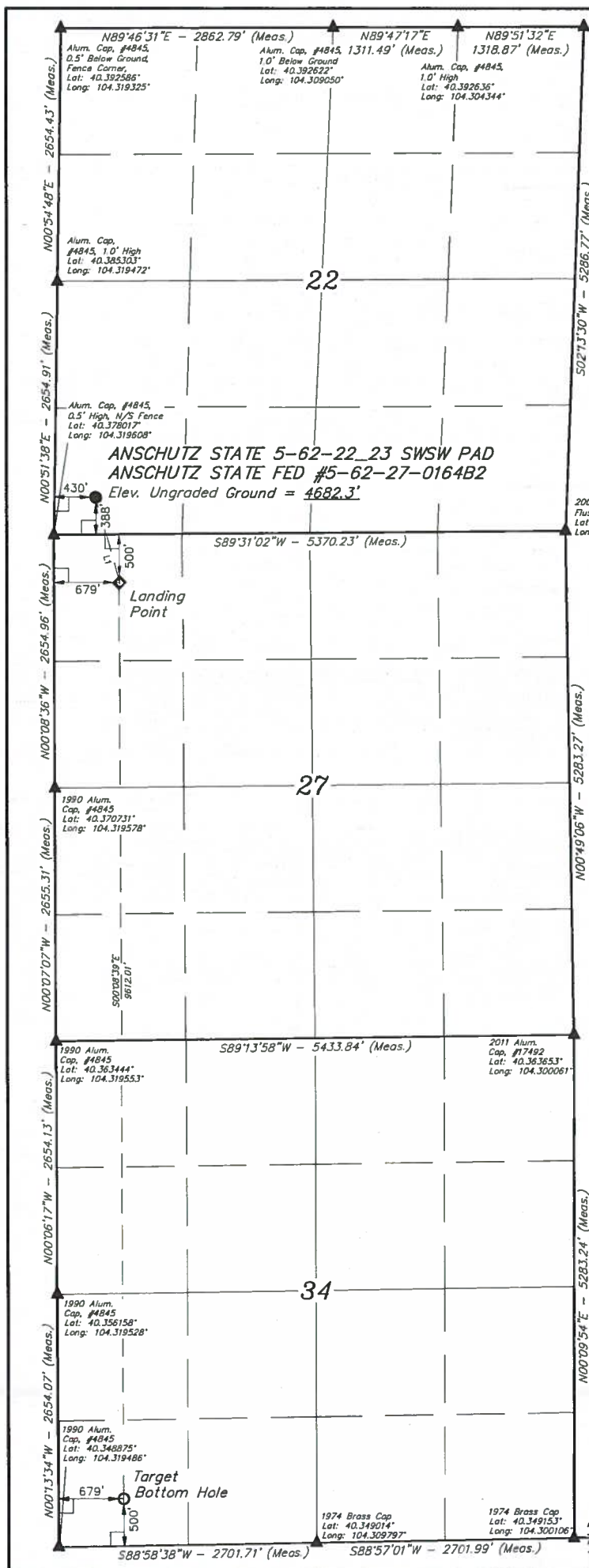
Title: Minerals Director

Date: 11-10-15

Exhibit A

Anschutz State 5-62-22_23 SWSW Well Pad	
Anschutz State Fed 5-62-27-0164B2	SHL: SWSW, Section 22, T5N-R62W
Anschutz State Fed 5-62-27-0164B2B	SHL: SWSW, Section 22, T5N-R62W
Anschutz State Fed 5-62-27-0164C2B	SHL: SWSW, Section 22, T5N-R62W
Anschutz State Fed 5-62-27-0263C2	SHL: SWSW, Section 22, T5N-R62W

Note: Well names subject to change. Surface Owner consent based on wells within the surface locations, as described, not specific well names.

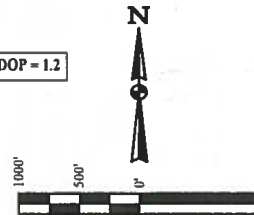


T5N, R62W, 6th P.M.

LEGEND:

- 90° SYMBOL
- PROPOSED WELLHEAD.
- LANDING POINT.
- TARGET BOTTOM HOLE.
- SECTION CORNERS LOCATED.

PDOP = 1.2



BASIS OF BEARINGS

BASIS OF BEARINGS IS A G.P.S. OBSERVATION

BASIS OF ELEVATION

SPOT ELEVATION LOCATED AT THE NORTHEAST CORNER OF SECTION 24, T5N, R62W, 6th P.M. TAKEN FROM THE POINT OF ROCKS, QUADRANGLE, COLORADO, WELD COUNTY, 7.5 MINUTE QUAD (TOPOGRAPHIC MAP) PUBLISHED BY THE UNITED STATES DEPARTMENT OF THE INTERIOR, GEOLOGICAL SURVEY. SAID ELEVATION IS MARKED AS BEING 4530 FEET.

LINE TABLE

LINE	DIRECTION	LENGTH
L1	S15°24'48"E	819.20'

NAD 83 (SURFACE LOCATION)	
LATITUDE = 40°22'44.73" (40 379092)	
LONGITUDE = 104°19'04.96" (104 318044)	
NAD 27 (SURFACE LOCATION)	
LATITUDE = 40°22'44.80" (40 379111)	
LONGITUDE = 104°19'03.14" (104 317539)	
STATE PLANE NAD 83 (CO. NORTH)	
N 1383138.48 E 3329278.36	
STATE PLANE NAD 27 (CO. NORTH)	
N 383140.26 E 2329428.35	
NAD 83 (LANDING POINT)	
LATITUDE = 40°22'35.98" (40 376661)	
LONGITUDE = 104°19'01.80" (104 317167)	
NAD 27 (LANDING POINT)	
LATITUDE = 40°22'36.05" (40 376681)	
LONGITUDE = 104°18'59.97" (104 316658)	
STATE PLANE NAD 83 (CO. NORTH)	
N 1382256.07 E 3329534.95	
STATE PLANE NAD 27 (CO. NORTH)	
N 382257.87 E 2329684.95	
NAD 83 (TARGET BOTTOM HOLE)	
LATITUDE = 40°21'01.02" (40 350283)	
LONGITUDE = 104°19'01.41" (104 317038)	
NAD 27 (TARGET BOTTOM HOLE)	
LATITUDE = 40°21'01.09" (40 350303)	
LONGITUDE = 104°18'59.58" (104 316550)	
STATE PLANE NAD 83 (CO. NORTH)	
N 1372647.87 E 3329693.34	
STATE PLANE NAD 27 (CO. NORTH)	
N 372649.92 E 2329843.43	

CERTIFICATE

THIS IS TO CERTIFY THAT THE ABOVE SURVEY WAS MADE IN ACCORDANCE WITH THE NOTES OF ACTUAL SURVEY MADE BY ME AND UNDER MY SUPERVISION AND THAT THE SAME ARE TRUE AND CORRECT TO THE BEST OF MY KNOWLEDGE AND BELIEF.



BILL BARRETT CORPORATION

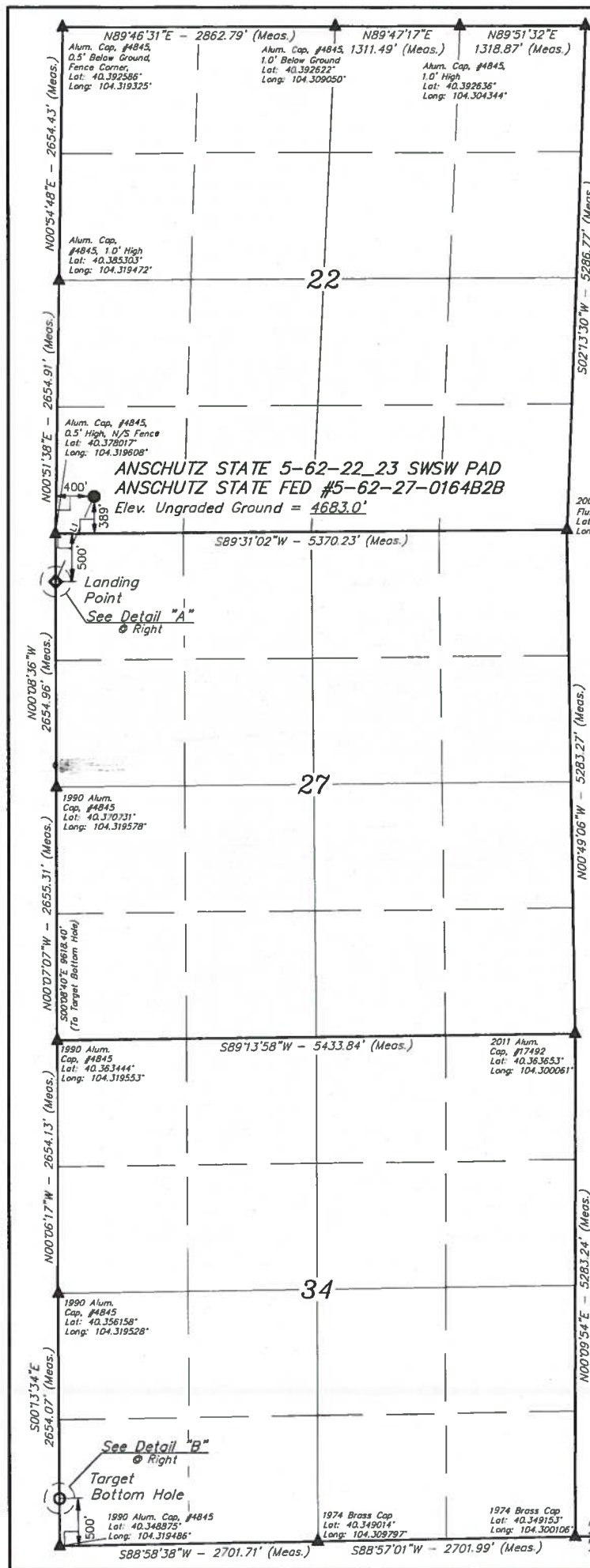
ANSCHUTZ STATE 5-62-22.23 SWSW PAD
ANSCHUTZ STATE FED #5-62-27-0164B2
SW 1/4 SW 1/4, SECTION 22, T5N, R62W, 6th P.M.
WELD COUNTY, COLORADO



UELS, LLC
Corporate Office • 85 South 200 East
Vernal, UT 84078 • (435) 789-1017

SURVEYED BY: DALLAS NIELSON, B.C.	DATE: 06-04-15
DRAWN BY: N.F.	DATE DRAWN: 06-05-15
SCALE: 1" = 1000'	REVISED: 00-00-00

WELL LOCATION PLAT

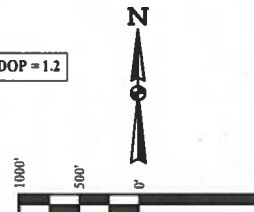


LEGEND:

- 90° SYMBOL
- PROPOSED WELL HEAD
- LANDING POINT
- TARGET BOTTOM HOLE
- SECTION CORNERS LOCATED

T5N, R62W, 6th P.M.

PDOP = 1.2



BASIS OF BEARINGS

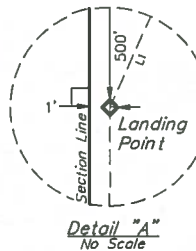
BASIS OF BEARINGS IS A G.P.S. OBSERVATION

BASIS OF ELEVATION

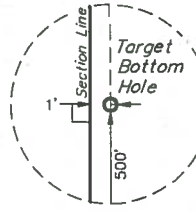
SPOT ELEVATION LOCATED AT THE NORTHEAST CORNER OF SECTION 24, T5N, R62W, 6th P.M. TAKEN FROM THE POINT OF ROCKS, QUADRANGLE, COLORADO, WELD COUNTY, 7.5 MINUTE QUAD (TOPOGRAPHIC MAP) PUBLISHED BY THE UNITED STATES DEPARTMENT OF THE INTERIOR, GEOLOGICAL SURVEY. SAID ELEVATION IS MARKED AS BEING 4530 FEET.

LINE TABLE

LINE	DIRECTION	LENGTH
L1	S24°20'34\"W	979.35'



Detail "A"
No Scale



Detail "B"
No Scale

NAD 83 (SURFACE LOCATION)	
LATITUDE = 40°22'44.74\"	(40 379094)
LONGITUDE = 104°19'05.35\"	(104 318153)
NAD 27 (SURFACE LOCATION)	
LATITUDE = 40°22'44.80\"	(40 379111)
LONGITUDE = 104°19'05.52\"	(104 317644)
STATE PLANE NAD 83 (CO. NORTH)	
N 1383138.49 E 3329248.37	
STATE PLANE NAD 27 (CO. NORTH)	
N 383140.27 E 2329398.36	
NAD 83 (LANDING POINT)	
LATITUDE = 40°22'35.92\"	(40 376644)
LONGITUDE = 104°19'10.56\"	(104 319600)
NAD 27 (LANDING POINT)	
LATITUDE = 40°22'35.99\"	(40 376664)
LONGITUDE = 104°19'08.73\"	(104 319092)
STATE PLANE NAD 83 (CO. NORTH)	
N 1382240.89 E 3328857.29	
STATE PLANE NAD 27 (CO. NORTH)	
N 382342.69 E 2329007.28	
NAD 83 (TARGET BOTTOM HOLE)	
LATITUDE = 40°21'00.90\"	(40 350250)
LONGITUDE = 104°19'10.16\"	(104 319489)
NAD 27 (TARGET BOTTOM HOLE)	
LATITUDE = 40°21'00.96\"	(40 350267)
LONGITUDE = 104°19'08.34\"	(104 318983)
STATE PLANE NAD 83 (CO. NORTH)	
N 1372636.31 E 3329015.80	
STATE PLANE NAD 27 (CO. NORTH)	
N 372628.36 E 2329165.89	

CERTIFICATE

THIS IS TO CERTIFY THAT THE ABOVE IS A TRUE AND CORRECT COPY OF THE NOTES OF ACTUAL SURVEYS MADE BY ME AND UNDER MY SUPERVISION AND THAT THE SAME ARE TRUE AND CORRECT TO THE BEST OF MY KNOWLEDGE AND BELIEF.



REGISTERED LAND SURVEYOR
REGISTRATION NO. 28283
STATE OF COLORADO
EXP. 06-15-15

BILL BARRETT CORPORATION

ANSCHUTZ STATE 5-62-22 23 SWSW PAD
ANSCHUTZ STATE FED #5-62-27-0164B2B
SW 1/4 SW 1/4, SECTION 22, T5N, R62W, 6th P.M.
WELD COUNTY, COLORADO



UELS, LLC
Corporate Office • 85 South 200 East
Vernal, UT 84078 • (435) 789-1017

SURVEYED BY: DALLAS NIELSON, B.C.	DATE: 06-04-15
DRAWN BY: N.E.	DATE DRAWN: 06-05-15
SCALE: 1\" = 1000'	REVISED: 00-00-00

WELL LOCATION PLAT

Fee/Fee/Federal Well Landowner Authorization Form

In accordance with Washington Office Instruction Memorandum (IM) 2009-78 dated February 20, 2009, entitled "Processing Oil and Gas Applications for Permit to Drill for Directional Drilling into Federal Mineral Estate from Multiple-Well Pads on Non-Federal Surface and Mineral Estate Locations".

The following guidance within the IM is used by the Royal Gorge Field Office in determining completeness of an Application for Permit to Drill (APD).

As a condition of approval of an APD... the operator must provide the BLM a true and complete copy of a document in which the owner of the surface or that owner's representative authorizes the operator to drill a Federal well from the non-Federal lands, and in which the surface owner or representative guarantees the Department of the Interior (Department), including BLM, access to the non-Federal lands to perform all necessary surveys and inspections. If access for any bureau of the Department to the operations and surrounding area for official business related to the approved operations is denied or impeded in any way, the BLM may order the federally approved operations halted and the Federal well or wells shut in.

I Pete Milonos, as the surface owner or surface owner's representative, authorize Bill Berrett Corporation (operator), to drill a Federal well from my private surface estate, and guarantee the BLM access to the Federal well on my private surface estate to perform all necessary surveys and inspections pertaining to the Federal well, until well is deemed plugged and abandoned.

Surface Owner Name: State Board of Land Commissioners

Surface Owner Address: 1127 Sherman St., #300
Denver, CO 80202

Surface Owner Phone Number(s): 303 866 3454 ext 3724

Signature: Pete Milonos Date: 11-10-15

Well Pad for Authorization:
Anschutz State 5-62-27_34 SWSW 22 Well Pad



November 10, 2015

State of Colorado – Acting through Colorado State Board of Land Commissioners
Attn: Steve Freese and Pete Milonas
1127 Sherman St.
Denver, Colorado 80203

Re: Letter Agreement
State Surface Use Agreement and Window and Twinning Waivers
Township 5 North, Range 62 West, 6th P.M.
Section 22 and 27 Surface
Weld County, Colorado

Dear Mr. Pete Milonas-

Pursuant to conversations with Steve Freese and yourself, Bill Barrett Corporation ("BBC") has plans to drill fifteen (15) wells located on three (3) separate surface pads located in Section 22 of Township 5 North, Range 62 West, 6th P.M. and one (1) surface pad located in Section 27 of Township 5 North, Range 62 West, 6th P.M.

The State of Colorado owns the surface of the aforementioned locations and in order to complete the permitting process BBC requires the State to waive the provisions of Rule 318.A.(a) and 318.A.(c) of the Colorado Oil and Gas Conservation Commissions Rules and Regulations. Due to the current proposal of a new state surface use agreement ("SUA") BBC has not acquired an agreement from the state for its surface pad locations.

The State of Colorado and BBC hereby agree to the following terms:

1. The State of Colorado will fully execute the Window and Twinning Waivers for the fifteen (15) wells located on State surface in Section 22 and 27 of Township 5 North, Range 62 West, 6th P.M.
2. Upon approval of the new State of Colorado SUA, BBC agrees to execute such agreement following State Land Board approval.

If you agree to the terms set forth in this letter, please indicate your acceptance by returning an executed copy in the space provided below. BBC respectfully requests your response to this letter and requests your execution of the enclosed waivers and its return at your earliest convenience.



Bill Barrett Corporation

If you would like to discuss this letter further or have any questions please contact me via email or phone anytime.

All the best,

BILL BARRETT CORPORATION

Justin Mihalcin



Bill Barrett Corporation

1099 18th Street | Suite 2300
Denver, CO 80202
303.312.8745
jmihalcin@billbarrettcorp.com

State of Colorado – Acting through the Colorado State Land Board accepted and agreed to on this 10th day of November, 2015.

By: Pete Milonas

Title: Pete Milonas – Minerals Director