

WPX Energy Rocky Mountain LLC- EBUS

PA 41-27

Nabors 576

Post Job Summary

Cement Surface Casing

Date Prepared: 11/30/2014
Job Date: 11/21/2014

Submitted by: Evan Russell – Grand Junction Cement Engineer

The Road to Excellence Starts with Safety

Sold To #: 300721	Ship To #: 3207609	Quote #:	Sales Order #: 0901842208
Customer: WPX ENERGY ROCKY MOUNTAIN LLC-EBUS		Customer Rep: AL HARTL	
Well Name: FEDERAL		Well #: PA 41-27	API/UWI #: 05-045-22239-00
Field: PARACHUTE	City (SAP): RIFLE	County/Parish: GARFIELD	State: COLORADO
Legal Description: 27-6S-95W-2367FNL-648FEL			
Contractor: NABORS DRLG		Rig/Platform Name/Num: NABORS 576	
Job BOM: 7521			
Well Type: DIRECTIONAL GAS			
Sales Person: HALAMERICA\HB50180		Srvc Supervisor: JAVIER CASTILLO	

Job

Formation Name				
Formation Depth (MD)	Top	SURFACE	Bottom	2942ft
Form Type			BHST	
Job depth MD	2942ft			Job Depth TVD
Water Depth			Wk Ht Above Floor	
Perforation Depth (MD)	From		To	

Well Data

Description	New / Used	Size in	ID in	Weight lbm/ft	Thread	Grade	Top MD ft	Bottom MD ft	Top TVD ft	Bottom TVD ft
Landing Joint	USED	9.625	9.001	32.3			0	30	0	0
Casing	NEW	9.625	9.001	32.3	8 RD	H-40	0	2839		0
Open Hole Section			13.5				0	2942		0

Tools and Accessories

Type	Size in	Qty	Make	Depth ft		Type	Size in	Qty	Make
Guide Shoe	9.625	1	WTF	2839		Top Plug	9.625	1	HES
Float Collar	9.625	1	WTF	2894.94'					
						Plug Container	9.625	1	HES
						Centralizers	9.625	9	WTF

Miscellaneous Materials

Gelling Agt		Conc		Surfactant		Conc		Acid Type		Qty		Conc	
Treatment Fld		Conc		Inhibitor		Conc		Sand Type		Size		Qty	

Fluid Data

Stage/Plug #: 1													
Fluid #	Stage Type	Fluid Name	Qty	Qty UoM	Mixing Density lbm/gal	Yield ft3/sack	Mix Fluid Gal	Rate bbl/min	Total Mix Fluid Gal				
1	Fresh Water	Fresh Water	20	bbl	8.34			4					
Fluid #	Stage Type	Fluid Name	Qty	Qty UoM	Mixing Density lbm/gal	Yield ft3/sack	Mix Fluid Gal	Rate bbl/min	Total Mix Fluid Gal				

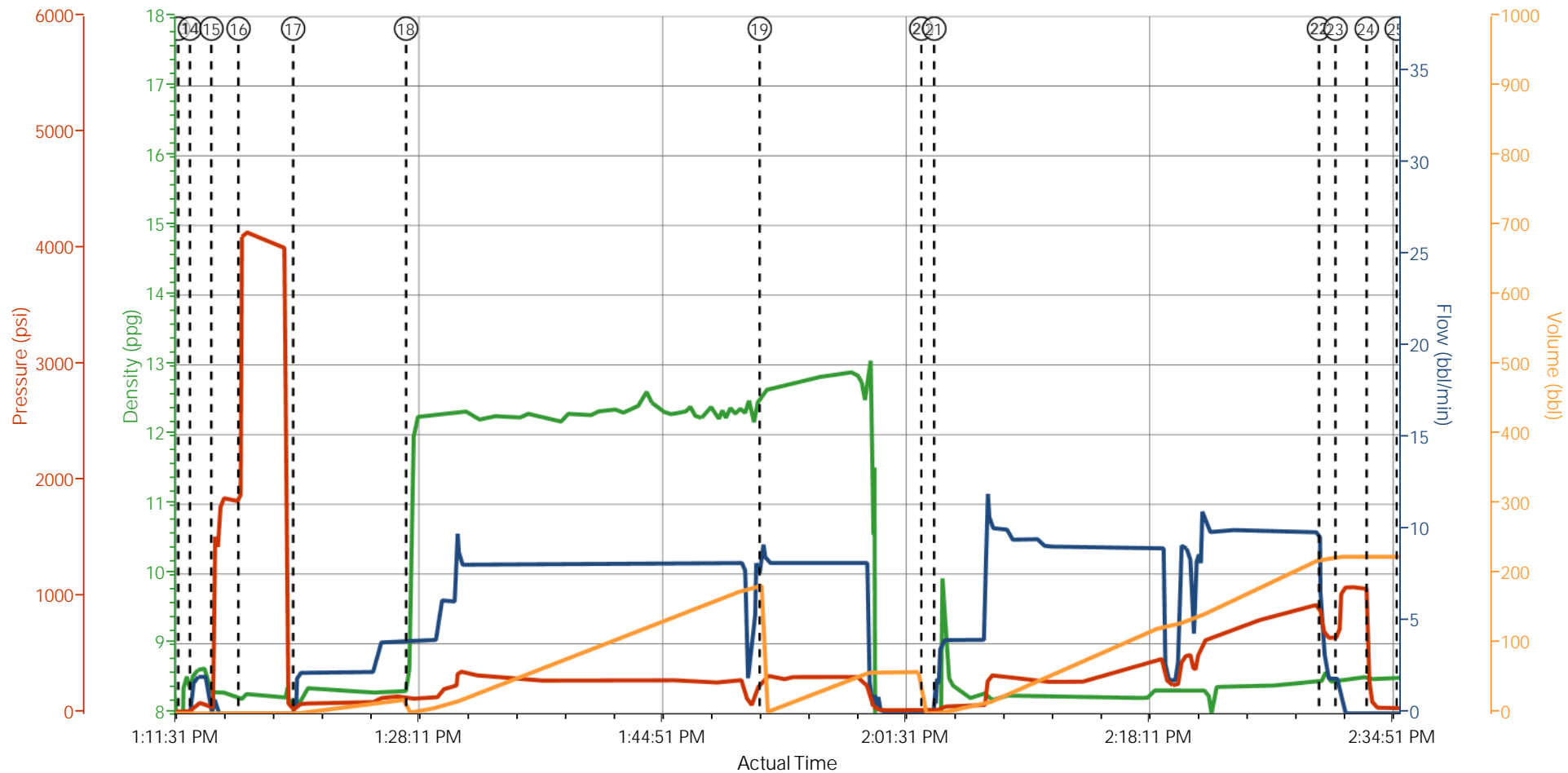
2	VariCem GJ1	VARICEM (TM) CEMENT	400	sack	12.3	2.38		8	13.77
13.70 Gal		FRESH WATER							
0.25 lbm		POLY-E-FLAKE (101216940)							
Fluid #	Stage Type	Fluid Name	Qty	Qty UoM	Mixing Density lbm/gal	Yield ft3/sack	Mix Fluid Gal	Rate bbl/min	Total Mix Fluid Gal
3	VariCem GJ1	VARICEM (TM) CEMENT	155	sack	12.8	2.11		8	11.77
0.25 lbm		POLY-E-FLAKE (101216940)							
11.71 Gal		FRESH WATER							
Fluid #	Stage Type	Fluid Name	Qty	Qty UoM	Mixing Density lbm/gal	Yield ft3/sack	Mix Fluid Gal	Rate bbl/min	Total Mix Fluid Gal
4	Fresh Water Displacement	Fresh Water Displacement	228	bbl	8.34			10	
Cement Left In Pipe		Amount	44.11 ft		Reason		Shoe Joint		
Comment									

1.1 Job Event Log

Graph Label	Date	Time	DH Density (ppg)	Comb Pump Rate (bbl/min)	PS Pump Press (psi)	Pump Stg Tot (bbl)	Comment
CALL OUT	11/19/2014	23:30:00					ON LOCATION AT 07:00 HRS 11/20/14
DEPART YARD SAFETY MEETING	11/20/2014	01:55:00					
CREW LEAVE THE YARD	11/20/2014	02:00:00					
ARRIVE ON LOCATION	11/20/2014	03:00:00					RIG WAS PULLING OUT DRILL PIPE
LOAD SILO SAFETY MEETING	11/20/2014	03:20:00					SPOT AND UNLOAD LEAD BULK TRUCK INTO SILO
RIG START CASING	11/20/2014	05:10:00					RIG BEGAN TO RUN CASING IN THE HOLE
RIG LANDED CASING	11/20/2014	10:45:00					WE HAD TO WAIT TILL THE CASING CREW CLEARED LOCATION IN ORDER TO SPOT TRUCKS
SPOT TRUCKS	11/20/2014	11:35:00					VERY TIGHT LOCATION. HAD TO USE EXTREME CAUTION AND TWO SPOTTERS
RIG UP MEETING	11/20/2014	11:45:00					
RIG UP	11/20/2014	11:50:00					1-ELITE, 1-660, 2" PUMPING IRON
RIG UP COMPLETE	11/20/2014	12:20:00					
PRE-JOB SAFETY MEETING	11/20/2014	12:45:00					ALL HES PERSONEL AND RIG CREW
START JOB	11/20/2014	13:12:00					TD-2942', TP-2939.05', SJ- 44.11', FC-2894.94', CSG- 9.625", 32.3#, H-40, MUD- 10.7 PPG, FV-60
FILL LINES	11/20/2014	13:12:47	8.33 PPG	2 BPM	112 PSI	2 BBLS	FRESH WATER
STALL OUT	11/20/2014	13:14:16					HELD PRESSURE AT 1860 PSI
TEST LINES	11/20/2014	13:16:07					HELD PRESSURE AT 4100 PSI

WATER SPACER	11/20/2014	13:19:51	8.33 PPG	4 BPM	150 PSI	20 BBLS	FRESH WATER
LEAD SLURRY	11/20/2014	13:27:35	12.3 PPG	8 BPM	280 PSI	170 BBLS	400 SKS, 12.3 PPG, 2.38 FT3/SK, 13.77 GAL/SK
TAIL SLURRY	11/20/2014	13:51:47	12.6 PPG	8 BPM	291 PSI	58 BBLS	155 SKS, 12.8 PPG, 2.11 FT3/SK, 11.77 GAL/SK
DROP TOP PLUG	11/20/2014	14:02:50					PLUG DROP VERIFIED BY DRILLER
DISPLACEMENT	11/20/2014	14:03:43	8.33 PPG	10 BPM	890 PSI	218 BBLS	FRESH WATER
SLOW RATE	11/20/2014	14:30:02	8.33 PPG	2 BPM	600 PSI	10 BBLS	
BUMP PLUG	11/20/2014	14:31:10			1080 PSI	TOTAL DISP. 228 BBLS	GOOD CIRCULATION THROUGH OUT THE JOB
CHECK FLOATS	11/20/2014	14:33:18					FLOATS HELD WITH .75 BBLS FLOW BACK TO TANK
END JOB	11/20/2014	14:35:22					CIRCULATED 40 BBLS / 95 SKS OF CEMENT TO THE PIT
RIG DOWN SAFETY MEETING	11/20/2014	14:40:00					USED 40 LBS OF SUGAR IN THE CELLAR
RIG DOWN	11/20/2014	14:45:00					
RIG DOWN COMPLETE	11/20/2014	15:50:00					
DEPART LOCATION SAFETY MEETING	11/20/2014	15:55:00					NO INJURIES WERE REPORTED
CREW LEAVE LOCATION	11/20/2014	16:00:00					
THANK YOU	11/20/2014	16:01:00					

WPX PA 41-27 SURFACE



DH Density (ppg) Comb Pump Rate (bbl/min) PS Pump Press (psi) Pump Stg Tot (bbl)

- | | | | | |
|--|--|-------------------------------------|------------------------------|--------------------------------|
| • CALL OUT n/a;n/a;n/a;n/a | • LOAD SILO SAFETY MEETING n/a;n/a;n/a;n/a | • RIG UP MEETING n/a;n/a;n/a;n/a | • START JOB 7.19;0;11;0 | • WATER SPACER 8.27;0;4124;2.2 |
| • DEPART YARD SAFETY MEETING n/a;n/a;n/a;n/a | • RIG START CASING n/a;n/a;n/a;n/a | • RIG UP n/a;n/a;n/a;n/a | • FILL LINES 8.53;1.8;45;0.1 | • LEAD SLURRY 9.07;0;4124;2.2 |
| • CREW LEAVE THE YARD n/a;n/a;n/a;n/a | • RIG LANDED CASING n/a;n/a;n/a;n/a | • RIG UP COMPLETE 0;0;8;0 | • STALL OUT 8.25;0;1485;2.2 | • TAIL SLURRY 12.07;0;4124;2.2 |
| • ARRIVE ON LOCATION n/a;n/a;n/a;n/a | • SPOT TRUCKS n/a;n/a;n/a;n/a | • PRE-JOB SAFETY MEETING 8.38;0;4;0 | • TEST LINES 8.27;0;4124;2.2 | 20 DROP TOP PLUG |

▼ HALLIBURTON | iCem® Service

Created: 2014-11-20 12:13:28, Version: 3.0.121

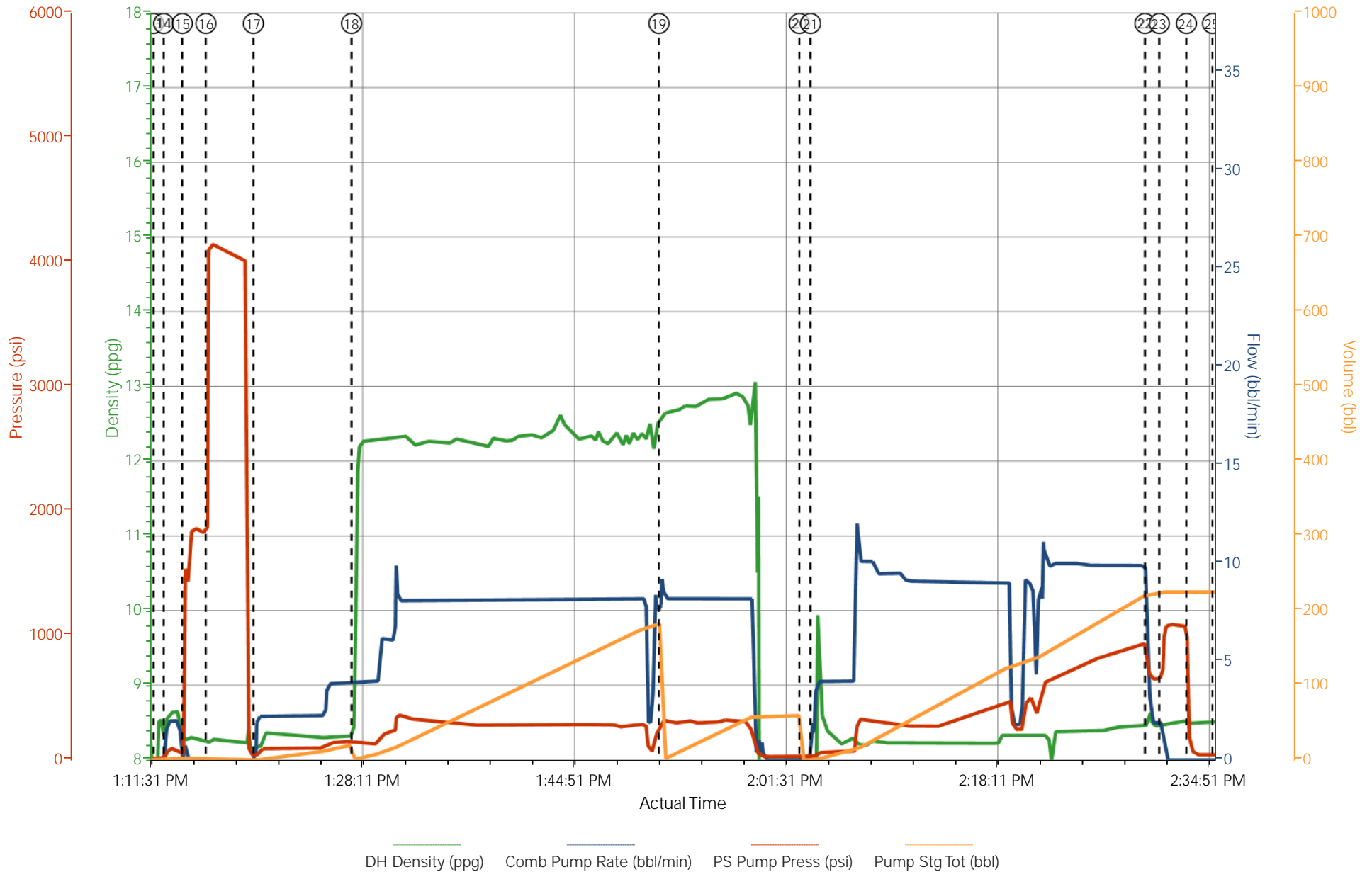
Edit

Customer : WPX ENERGY ROCKY MOUNTAIN LLC-
EBUS
Representative: AL HARTL

Job Date : 11/20/2014 12:15:00 PM
Sales Order # : 901842208

Well : PA 41-27
ELITE #4 : J. CASTILLO / PAUL SALAZAR

WPX PA 41-27 SURFACE



HALLIBURTON

Water Analysis Report

Company: WPX

Submitted by: JAVIER CASTILLO

Attention: Chuck Ross

Lease: PA

Well #: 41-27

Date: 11/20/2014

Date Rec.: 11/20/2014

S.O.#: 901842208

Job Type: SURFACE

Specific Gravity	<i>MAX</i>	1
pH	<i>8</i>	7
Potassium (K)	<i>5000</i>	200 Mg / L
Calcium (Ca)	<i>500</i>	120 Mg / L
Iron (FE2)	<i>300</i>	0 Mg / L
Chlorides (Cl)	<i>3000</i>	0 Mg / L
Sulfates (SO ₄)	<i>1500</i>	200 Mg / L
Chlorine (Cl ₂)		0 Mg / L
Temp	<i>40-80</i>	80 Deg
Total Dissolved Solids		470 Mg / L

Respectfully: JAVIER CASTILLO

Title: CEMENTING SUPERVISOR

Location: Grand Junction, CO

NOTICE: This report is limited to the described sample tested. Any person using or relying on this report agrees that Halliburton shall not be liable for any loss or damage whether due to act or omission resulting from such report or