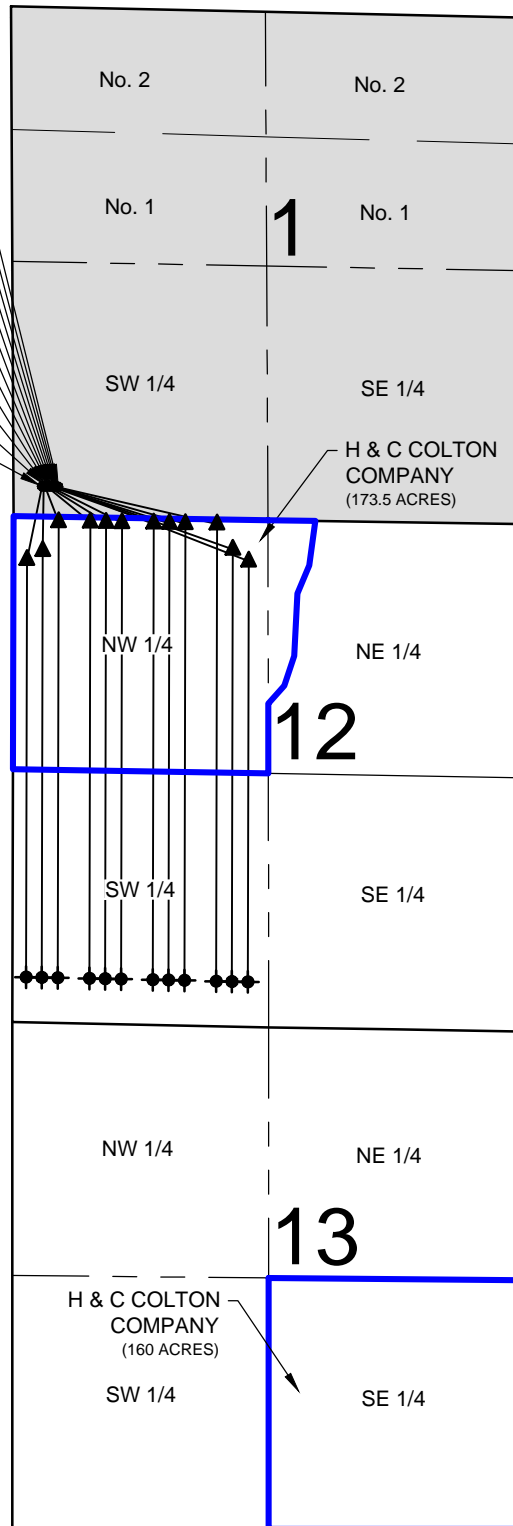


WILKINSON 1-P PAD LEASE DRAWING

WILKINSON L-12HN
WILKINSON K-12HC
WILKINSON J-12HN
WILKINSON I-12HN
WILKINSON H-12HC
WILKINSON G-12HN
WILKINSON F-12HN
WILKINSON E-12HC
WILKINSON D-12HN
WILKINSON C-12HN
WILKINSON B-12HC
WILKINSON A-12HN

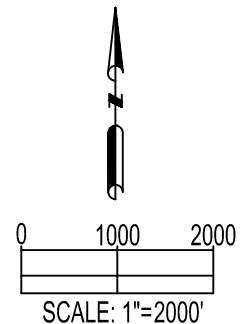


NOTES:

WILKINSON A-12HN TO BE AT 316' FSL, 300' FWL.
BOTTOM HOLE AT 470' FSL & 140' FWL, SEC 12.
WILKINSON B-12HC TO BE AT 316' FSL, 315' FWL.
BOTTOM HOLE AT 470' FSL & 305' FWL, SEC 12.
WILKINSON C-12HN TO BE AT 316' FSL, 330' FWL.
BOTTOM HOLE AT 470' FSL & 470' FWL, SEC 12.
WILKINSON D-12HN TO BE AT 316' FSL, 345' FWL.
BOTTOM HOLE AT 470' FSL & 800' FWL, SEC 12.
WILKINSON E-12HC TO BE AT 316' FSL, 360' FWL.
BOTTOM HOLE AT 470' FSL & 965' FWL, SEC 12.
WILKINSON F-12HN TO BE AT 316' FSL, 375' FWL.
BOTTOM HOLE AT 470' FSL & 1130' FWL, SEC 12.
WILKINSON G-12HN TO BE AT 316' FSL, 390' FWL.
BOTTOM HOLE AT 470' FSL & 1460' FWL, SEC 12.
WILKINSON H-12HC TO BE AT 316' FSL, 405' FWL.
BOTTOM HOLE AT 470' FSL & 1625' FWL, SEC 12.
WILKINSON I-12HN TO BE AT 316' FSL, 420' FWL.
BOTTOM HOLE AT 470' FSL & 1790' FWL, SEC 12.
WILKINSON J-12HN TO BE AT 316' FSL, 435' FWL.
BOTTOM HOLE AT 470' FSL & 2120' FWL, SEC 12.
WILKINSON K-12HC TO BE AT 316' FSL, 450' FWL.
BOTTOM HOLE AT 470' FSL & 2285' FWL, SEC 12.
WILKINSON L-12HN TO BE AT 316' FSL, 465' FWL.
BOTTOM HOLE AT 470' FSL & 2450' FWL, SEC 12.

LEGEND

- = PROPOSED WELL
- ▲ = LANDING POINT
- ⊙ = BOTTOM HOLE
- = LEASE LINES



PREPARED BY:



FIELD DATE:

06-23-15

DRAWING DATE:

10-06-15

BY:

KAD

CHECKED BY:

SNC

SITE NAME:

WILKINSON 1-P PAD

SURFACE LOCATION:

SW 1/4 SW 1/4, SEC. 1, T6N, R65W, 6TH P.M.
WELD COUNTY, COLORADO

PREPARED FOR:

