

Bayswater Exploration & Production, LLC

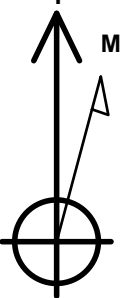
Well Name: **Wilkinson H-12HC**

Surface Location: Wilkinson 1-P Pad Sec.1-T6N-R65W  
North American Datum 1983 , US State Plane 1983 , Colorado Northern Zone  
Ground Elevation: 4775.0  
+N/-S    +E/-W    Northing    Easting    Latitude    Longitude    Slot  
0.0       0.0       1429422.53    3244908.81    40.508827    -104.619219  
RKB - 22.5'    WELL @ 4797.5ft (RKB - 22.5')

WELLBORE TARGET DETAILS

Name	TVD	+N/-S	+E/-W	Shape
SHL 316'FSL, 405'FWL, SEC.1	1.0	0.0	0.0	Point
BHL 470'FSL, 1625'FWL, SEC.12	7128.5	-5153.6	1159.8	Point
LPL 50'FNL, 1625'FWL, SEC.12	7142.5	-397.1	1217.1	Point

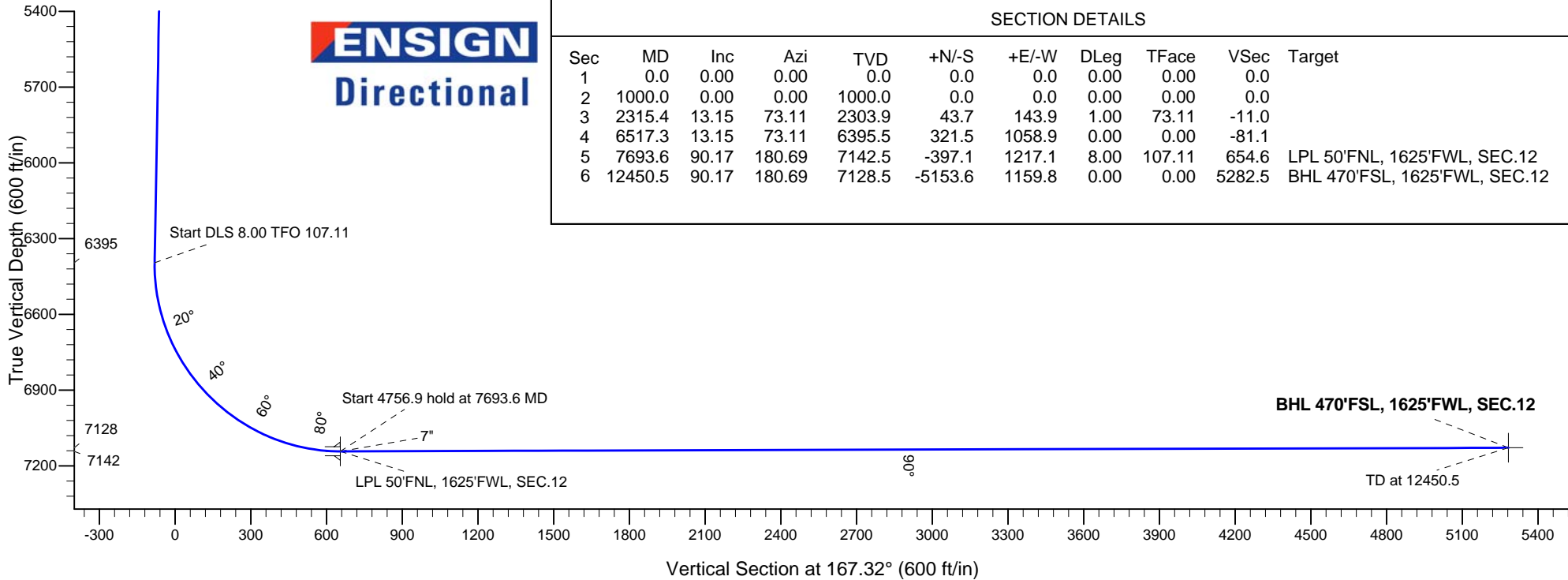
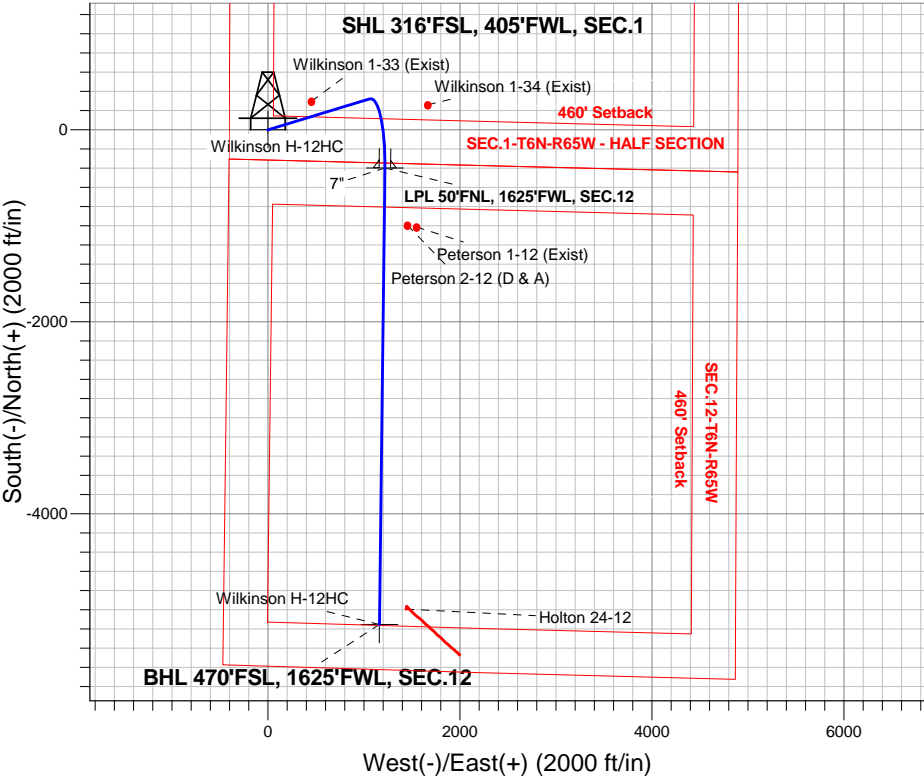
Wilkinson 1-P Pad Sec.1-T6N-R65W  
Wilkinson H-12HC  
Plan #1 (7-29-15)  
12:32, July 31 2015



Azimuths to True North  
Magnetic North: 8.24°  
  
Magnetic Field  
Strength: 52768.7nT  
Dip Angle: 67.02°  
Date: 7/31/2015  
Model: IGRF2010

ANNOTATIONS

TVD	MD	Annotation
1000.0	1000.0	KOP - Start Build 1.00
2303.9	2315.4	Start 4201.8 hold at 2315.4 MD
6395.5	6517.3	Start DLS 8.00 TFO 107.11
7142.5	7693.6	Start 4756.9 hold at 7693.6 MD
7128.5	12450.5	TD at 12450.5



SECTION DETAILS

Sec	MD	Inc	Azi	TVD	+N/-S	+E/-W	DLeg	TFace	VSec	Target
1	0.0	0.00	0.00	0.0	0.0	0.0	0.00	0.00	0.0	
2	1000.0	0.00	0.00	1000.0	0.0	0.0	0.00	0.00	0.0	
3	2315.4	13.15	73.11	2303.9	43.7	143.9	1.00	73.11	-11.0	
4	6517.3	13.15	73.11	6395.5	321.5	1058.9	0.00	0.00	-81.1	
5	7693.6	90.17	180.69	7142.5	-397.1	1217.1	8.00	107.11	654.6	LPL 50'FNL, 1625'FWL, SEC.12
6	12450.5	90.17	180.69	7128.5	-5153.6	1159.8	0.00	0.00	5282.5	BHL 470'FSL, 1625'FWL, SEC.12



# **Bayswater Exploration & Production, LLC**

**SEC.1-T6N-R65W**

**Wilkinson 1-P Pad Sec.1-T6N-R65W**

**Wilkinson H-12HC**

**Wellbore #1**

**Plan: Plan #1 (7-29-15)**

## **Standard Planning Report**

**31 July, 2015**



**BAYSWATER**  
**EXPLORATION & PRODUCTION, LLC**

<b>Database:</b>	EDMNEW	<b>Local Co-ordinate Reference:</b>	Well Wilkinson H-12HC
<b>Company:</b>	Bayswater Exploration & Production, LLC	<b>TVD Reference:</b>	WELL @ 4797.5ft (RKB - 22.5')
<b>Project:</b>	SEC.1-T6N-R65W	<b>MD Reference:</b>	WELL @ 4797.5ft (RKB - 22.5')
<b>Site:</b>	Wilkinson 1-P Pad Sec.1-T6N-R65W	<b>North Reference:</b>	True
<b>Well:</b>	Wilkinson H-12HC	<b>Survey Calculation Method:</b>	Minimum Curvature
<b>Wellbore:</b>	Wellbore #1		
<b>Design:</b>	Plan #1 (7-29-15)		

<b>Project</b>	SEC.1-T6N-R65W, Weld County, Colorado		
<b>Map System:</b>	US State Plane 1983	<b>System Datum:</b>	Mean Sea Level
<b>Geo Datum:</b>	North American Datum 1983		Using Well Reference Point
<b>Map Zone:</b>	Colorado Northern Zone		Using geodetic scale factor

Site		Wilkinson 1-P Pad Sec.1-T6N-R65W			
Site Position:		Northing:	1,429,424.05 ft	Latitude:	40.508834
From:	Lat/Long	Easting:	3,244,803.96 ft	Longitude:	-104.619596
Position Uncertainty:	0.0 ft	Slot Radius:	"	Grid Convergence:	0.57 °

Well	Wilkinson H-12HC					
Well Position	+N-S	-2.6 ft	Northing:	1,429,422.53 ft	Latitude:	40.508827
	+E-W	104.8 ft	Easting:	3,244,908.81 ft	Longitude:	-104.619219
Position Uncertainty		0.0 ft	Wellhead Elevation:	ft	Ground Level:	4,775.0 ft

<b>Wellbore</b>	Wellbore #1				
<b>Magnetics</b>	<b>Model Name</b>	<b>Sample Date</b>	<b>Declination (°)</b>	<b>Dip Angle (°)</b>	<b>Field Strength (nT)</b>
	IGRF2010	7/31/2015	8.24	67.02	52,769

<b>Design</b>	Plan #1 (7-29-15)			
<b>Audit Notes:</b>				
<b>Version:</b>	<b>Phase:</b>	PROTOTYPE	<b>Tie On Depth:</b>	0.0
<b>Vertical Section:</b>	<b>Depth From (TVD) (ft)</b>	<b>+N/-S (ft)</b>	<b>+E/-W (ft)</b>	<b>Direction (°)</b>
	0.0	0.0	0.0	167.32

<b>Plan Sections</b>										
Measured Depth (ft)	Inclination (°)	Azimuth (°)	Vertical Depth (ft)	+N/-S (ft)	+E/-W (ft)	Dogleg Rate (°/100ft)	Build Rate (°/100ft)	Turn Rate (°/100ft)	TFO (°)	Target
0.0	0.00	0.00	0.0	0.0	0.0	0.00	0.00	0.00	0.00	
1,000.0	0.00	0.00	1,000.0	0.0	0.0	0.00	0.00	0.00	0.00	
2,315.4	13.15	73.11	2,303.9	43.7	143.9	1.00	1.00	0.00	73.11	
6,517.3	13.15	73.11	6,395.5	321.5	1,058.9	0.00	0.00	0.00	0.00	
7,693.6	90.17	180.69	7,142.5	-397.1	1,217.1	8.00	6.55	9.15	107.11	LPL 50'FNL, 1625'F
12,450.5	90.17	180.69	7,128.5	-5,153.6	1,159.8	0.00	0.00	0.00	0.00	BHL 470'FSL, 1625

<b>Database:</b>	EDMNEW	<b>Local Co-ordinate Reference:</b>	Well Wilkinson H-12HC
<b>Company:</b>	Bayswater Exploration & Production, LLC	<b>TVD Reference:</b>	WELL @ 4797.5ft (RKB - 22.5')
<b>Project:</b>	SEC.1-T6N-R65W	<b>MD Reference:</b>	WELL @ 4797.5ft (RKB - 22.5')
<b>Site:</b>	Wilkinson 1-P Pad Sec.1-T6N-R65W	<b>North Reference:</b>	True
<b>Well:</b>	Wilkinson H-12HC	<b>Survey Calculation Method:</b>	Minimum Curvature
<b>Wellbore:</b>	Wellbore #1		
<b>Design:</b>	Plan #1 (7-29-15)		

Planned Survey									
Measured Depth (ft)	Inclination (°)	Azimuth (°)	Vertical Depth (ft)	+N/-S (ft)	+E/-W (ft)	Vertical Section (ft)	Dogleg Rate (°/100ft)	Build Rate (°/100ft)	Turn Rate (°/100ft)
0.0	0.00	0.00	0.0	0.0	0.0	0.0	0.00	0.00	0.00
1.0	0.00	0.00	1.0	0.0	0.0	0.0	0.00	0.00	0.00
<b>SHL 316'FSL, 405'FWL, SEC.1</b>									
100.0	0.00	0.00	100.0	0.0	0.0	0.0	0.00	0.00	0.00
200.0	0.00	0.00	200.0	0.0	0.0	0.0	0.00	0.00	0.00
300.0	0.00	0.00	300.0	0.0	0.0	0.0	0.00	0.00	0.00
400.0	0.00	0.00	400.0	0.0	0.0	0.0	0.00	0.00	0.00
500.0	0.00	0.00	500.0	0.0	0.0	0.0	0.00	0.00	0.00
600.0	0.00	0.00	600.0	0.0	0.0	0.0	0.00	0.00	0.00
700.0	0.00	0.00	700.0	0.0	0.0	0.0	0.00	0.00	0.00
800.0	0.00	0.00	800.0	0.0	0.0	0.0	0.00	0.00	0.00
900.0	0.00	0.00	900.0	0.0	0.0	0.0	0.00	0.00	0.00
1,000.0	0.00	0.00	1,000.0	0.0	0.0	0.0	0.00	0.00	0.00
<b>KOP - Start Build 1.00</b>									
1,100.0	1.00	73.11	1,100.0	0.3	0.8	-0.1	1.00	1.00	0.00
1,200.0	2.00	73.11	1,200.0	1.0	3.3	-0.3	1.00	1.00	0.00
1,300.0	3.00	73.11	1,299.9	2.3	7.5	-0.6	1.00	1.00	0.00
1,400.0	4.00	73.11	1,399.7	4.1	13.4	-1.0	1.00	1.00	0.00
1,500.0	5.00	73.11	1,499.4	6.3	20.9	-1.6	1.00	1.00	0.00
1,600.0	6.00	73.11	1,598.9	9.1	30.0	-2.3	1.00	1.00	0.00
1,700.0	7.00	73.11	1,698.3	12.4	40.9	-3.1	1.00	1.00	0.00
1,800.0	8.00	73.11	1,797.4	16.2	53.4	-4.1	1.00	1.00	0.00
1,900.0	9.00	73.11	1,896.3	20.5	67.5	-5.2	1.00	1.00	0.00
2,000.0	10.00	73.11	1,994.9	25.3	83.3	-6.4	1.00	1.00	0.00
2,100.0	11.00	73.11	2,093.3	30.6	100.7	-7.7	1.00	1.00	0.00
2,200.0	12.00	73.11	2,191.2	36.4	119.8	-9.2	1.00	1.00	0.00
2,300.0	13.00	73.11	2,288.9	42.7	140.5	-10.8	1.00	1.00	0.00
2,315.4	13.15	73.11	2,303.9	43.7	143.9	-11.0	1.00	1.00	0.00
<b>Start 4201.8 hold at 2315.4 MD</b>									
2,400.0	13.15	73.11	2,386.3	49.3	162.3	-12.4	0.00	0.00	0.00
2,500.0	13.15	73.11	2,483.6	55.9	184.0	-14.1	0.00	0.00	0.00
2,600.0	13.15	73.11	2,581.0	62.5	205.8	-15.8	0.00	0.00	0.00
2,700.0	13.15	73.11	2,678.4	69.1	227.6	-17.4	0.00	0.00	0.00
2,800.0	13.15	73.11	2,775.8	75.7	249.4	-19.1	0.00	0.00	0.00
2,900.0	13.15	73.11	2,873.1	82.3	271.2	-20.8	0.00	0.00	0.00
3,000.0	13.15	73.11	2,970.5	88.9	292.9	-22.4	0.00	0.00	0.00
3,100.0	13.15	73.11	3,067.9	95.5	314.7	-24.1	0.00	0.00	0.00
3,200.0	13.15	73.11	3,165.3	102.2	336.5	-25.8	0.00	0.00	0.00
3,300.0	13.15	73.11	3,262.6	108.8	358.3	-27.4	0.00	0.00	0.00
3,400.0	13.15	73.11	3,360.0	115.4	380.0	-29.1	0.00	0.00	0.00
3,500.0	13.15	73.11	3,457.4	122.0	401.8	-30.8	0.00	0.00	0.00
3,600.0	13.15	73.11	3,554.8	128.6	423.6	-32.5	0.00	0.00	0.00
3,700.0	13.15	73.11	3,652.1	135.2	445.4	-34.1	0.00	0.00	0.00
3,800.0	13.15	73.11	3,749.5	141.8	467.1	-35.8	0.00	0.00	0.00
3,900.0	13.15	73.11	3,846.9	148.4	488.9	-37.5	0.00	0.00	0.00
4,000.0	13.15	73.11	3,944.3	155.0	510.7	-39.1	0.00	0.00	0.00
4,100.0	13.15	73.11	4,041.6	161.6	532.5	-40.8	0.00	0.00	0.00
4,200.0	13.15	73.11	4,139.0	168.3	554.2	-42.5	0.00	0.00	0.00
4,300.0	13.15	73.11	4,236.4	174.9	576.0	-44.1	0.00	0.00	0.00
4,400.0	13.15	73.11	4,333.8	181.5	597.8	-45.8	0.00	0.00	0.00
4,500.0	13.15	73.11	4,431.2	188.1	619.6	-47.5	0.00	0.00	0.00
4,600.0	13.15	73.11	4,528.5	194.7	641.3	-49.1	0.00	0.00	0.00
4,700.0	13.15	73.11	4,625.9	201.3	663.1	-50.8	0.00	0.00	0.00

<b>Database:</b>	EDMNEW	<b>Local Co-ordinate Reference:</b>	Well Wilkinson H-12HC
<b>Company:</b>	Bayswater Exploration & Production, LLC	<b>TVD Reference:</b>	WELL @ 4797.5ft (RKB - 22.5')
<b>Project:</b>	SEC.1-T6N-R65W	<b>MD Reference:</b>	WELL @ 4797.5ft (RKB - 22.5')
<b>Site:</b>	Wilkinson 1-P Pad Sec.1-T6N-R65W	<b>North Reference:</b>	True
<b>Well:</b>	Wilkinson H-12HC	<b>Survey Calculation Method:</b>	Minimum Curvature
<b>Wellbore:</b>	Wellbore #1		
<b>Design:</b>	Plan #1 (7-29-15)		

Planned Survey									
Measured Depth (ft)	Inclination (°)	Azimuth (°)	Vertical Depth (ft)	+N/-S (ft)	+E/-W (ft)	Vertical Section (ft)	Dogleg Rate (°/100ft)	Build Rate (°/100ft)	Turn Rate (°/100ft)
4,800.0	13.15	73.11	4,723.3	207.9	684.9	-52.5	0.00	0.00	0.00
4,900.0	13.15	73.11	4,820.7	214.5	706.7	-54.1	0.00	0.00	0.00
5,000.0	13.15	73.11	4,918.0	221.1	728.5	-55.8	0.00	0.00	0.00
5,100.0	13.15	73.11	5,015.4	227.8	750.2	-57.5	0.00	0.00	0.00
5,200.0	13.15	73.11	5,112.8	234.4	772.0	-59.2	0.00	0.00	0.00
5,300.0	13.15	73.11	5,210.2	241.0	793.8	-60.8	0.00	0.00	0.00
5,400.0	13.15	73.11	5,307.5	247.6	815.6	-62.5	0.00	0.00	0.00
5,500.0	13.15	73.11	5,404.9	254.2	837.3	-64.2	0.00	0.00	0.00
5,600.0	13.15	73.11	5,502.3	260.8	859.1	-65.8	0.00	0.00	0.00
5,700.0	13.15	73.11	5,599.7	267.4	880.9	-67.5	0.00	0.00	0.00
5,800.0	13.15	73.11	5,697.0	274.0	902.7	-69.2	0.00	0.00	0.00
5,900.0	13.15	73.11	5,794.4	280.6	924.4	-70.8	0.00	0.00	0.00
6,000.0	13.15	73.11	5,891.8	287.3	946.2	-72.5	0.00	0.00	0.00
6,100.0	13.15	73.11	5,989.2	293.9	968.0	-74.2	0.00	0.00	0.00
6,200.0	13.15	73.11	6,086.5	300.5	989.8	-75.8	0.00	0.00	0.00
6,300.0	13.15	73.11	6,183.9	307.1	1,011.5	-77.5	0.00	0.00	0.00
6,400.0	13.15	73.11	6,281.3	313.7	1,033.3	-79.2	0.00	0.00	0.00
6,500.0	13.15	73.11	6,378.7	320.3	1,055.1	-80.8	0.00	0.00	0.00
6,517.3	13.15	73.11	6,395.5	321.5	1,058.9	-81.1	0.00	0.00	0.00
Start DLS 8.00 TFO 107.11									
6,600.0	12.84	102.82	6,476.2	322.1	1,076.9	-77.9	8.00	-0.38	35.91
6,700.0	16.44	131.59	6,573.1	310.3	1,098.3	-61.6	8.00	3.59	28.77
6,800.0	22.39	147.90	6,667.4	284.7	1,119.0	-32.1	8.00	5.95	16.31
6,900.0	29.30	157.25	6,757.4	245.9	1,138.6	10.1	8.00	6.91	9.35
7,000.0	36.62	163.20	6,841.2	194.7	1,156.8	64.0	8.00	7.32	5.95
7,100.0	44.15	167.38	6,917.4	132.1	1,173.0	128.7	8.00	7.53	4.18
7,200.0	51.80	170.55	6,984.3	59.2	1,187.1	202.8	8.00	7.65	3.17
7,300.0	59.52	173.11	7,040.7	-22.4	1,198.7	285.1	8.00	7.72	2.56
7,400.0	67.27	175.30	7,085.4	-111.3	1,207.7	373.7	8.00	7.76	2.18
7,500.0	75.06	177.24	7,117.7	-205.7	1,213.8	467.2	8.00	7.79	1.95
7,600.0	82.86	179.05	7,136.8	-303.7	1,216.9	563.5	8.00	7.80	1.81
7,693.6	90.17	180.69	7,142.5	-397.1	1,217.1	654.6	8.00	7.81	1.75
Start 4756.9 hold at 7693.6 MD - 7" - LPL 50'FNL, 1625'FWL, SEC.12									
7,700.0	90.17	180.69	7,142.5	-403.5	1,217.1	660.8	0.01	0.01	0.00
7,800.0	90.17	180.69	7,142.2	-503.5	1,215.9	758.1	0.00	0.00	0.00
7,900.0	90.17	180.69	7,141.9	-603.4	1,214.7	855.4	0.00	0.00	0.00
8,000.0	90.17	180.69	7,141.6	-703.4	1,213.5	952.7	0.00	0.00	0.00
8,100.0	90.17	180.69	7,141.3	-803.4	1,212.2	1,050.0	0.00	0.00	0.00
8,200.0	90.17	180.69	7,141.0	-903.4	1,211.0	1,147.3	0.00	0.00	0.00
8,300.0	90.17	180.69	7,140.7	-1,003.4	1,209.8	1,244.6	0.00	0.00	0.00
8,400.0	90.17	180.69	7,140.4	-1,103.4	1,208.6	1,341.8	0.00	0.00	0.00
8,500.0	90.17	180.69	7,140.1	-1,203.4	1,207.4	1,439.1	0.00	0.00	0.00
8,600.0	90.17	180.69	7,139.8	-1,303.4	1,206.2	1,536.4	0.00	0.00	0.00
8,700.0	90.17	180.69	7,139.5	-1,403.4	1,205.0	1,633.7	0.00	0.00	0.00
8,800.0	90.17	180.69	7,139.2	-1,503.4	1,203.8	1,731.0	0.00	0.00	0.00
8,900.0	90.17	180.69	7,138.9	-1,603.4	1,202.6	1,828.3	0.00	0.00	0.00
9,000.0	90.17	180.69	7,138.7	-1,703.4	1,201.4	1,925.6	0.00	0.00	0.00
9,100.0	90.17	180.69	7,138.4	-1,803.4	1,200.2	2,022.9	0.00	0.00	0.00
9,200.0	90.17	180.69	7,138.1	-1,903.3	1,199.0	2,120.1	0.00	0.00	0.00
9,300.0	90.17	180.69	7,137.8	-2,003.3	1,197.8	2,217.4	0.00	0.00	0.00
9,400.0	90.17	180.69	7,137.5	-2,103.3	1,196.6	2,314.7	0.00	0.00	0.00
9,500.0	90.17	180.69	7,137.2	-2,203.3	1,195.4	2,412.0	0.00	0.00	0.00
9,600.0	90.17	180.69	7,136.9	-2,303.3	1,194.2	2,509.3	0.00	0.00	0.00
9,700.0	90.17	180.69	7,136.6	-2,403.3	1,193.0	2,606.6	0.00	0.00	0.00

<b>Database:</b>	EDMNEW	<b>Local Co-ordinate Reference:</b>	Well Wilkinson H-12HC
<b>Company:</b>	Bayswater Exploration & Production, LLC	<b>TVD Reference:</b>	WELL @ 4797.5ft (RKB - 22.5')
<b>Project:</b>	SEC.1-T6N-R65W	<b>MD Reference:</b>	WELL @ 4797.5ft (RKB - 22.5')
<b>Site:</b>	Wilkinson 1-P Pad Sec.1-T6N-R65W	<b>North Reference:</b>	True
<b>Well:</b>	Wilkinson H-12HC	<b>Survey Calculation Method:</b>	Minimum Curvature
<b>Wellbore:</b>	Wellbore #1		
<b>Design:</b>	Plan #1 (7-29-15)		

Planned Survey										
Measured Depth (ft)	Inclination (°)	Azimuth (°)	Vertical Depth (ft)	+N/-S (ft)	+E/-W (ft)	Vertical Section (ft)	Dogleg Rate (°/100ft)	Build Rate (°/100ft)	Turn Rate (°/100ft)	
9,800.0	90.17	180.69	7,136.3	-2,503.3	1,191.8	2,703.9	0.00	0.00	0.00	
9,900.0	90.17	180.69	7,136.0	-2,603.3	1,190.5	2,801.2	0.00	0.00	0.00	
10,000.0	90.17	180.69	7,135.7	-2,703.3	1,189.3	2,898.5	0.00	0.00	0.00	
10,100.0	90.17	180.69	7,135.4	-2,803.3	1,188.1	2,995.7	0.00	0.00	0.00	
10,200.0	90.17	180.69	7,135.1	-2,903.3	1,186.9	3,093.0	0.00	0.00	0.00	
10,300.0	90.17	180.69	7,134.8	-3,003.3	1,185.7	3,190.3	0.00	0.00	0.00	
10,400.0	90.17	180.69	7,134.5	-3,103.3	1,184.5	3,287.6	0.00	0.00	0.00	
10,500.0	90.17	180.69	7,134.2	-3,203.2	1,183.3	3,384.9	0.00	0.00	0.00	
10,600.0	90.17	180.69	7,133.9	-3,303.2	1,182.1	3,482.2	0.00	0.00	0.00	
10,700.0	90.17	180.69	7,133.7	-3,403.2	1,180.9	3,579.5	0.00	0.00	0.00	
10,800.0	90.17	180.69	7,133.4	-3,503.2	1,179.7	3,676.8	0.00	0.00	0.00	
10,900.0	90.17	180.69	7,133.1	-3,603.2	1,178.5	3,774.0	0.00	0.00	0.00	
11,000.0	90.17	180.69	7,132.8	-3,703.2	1,177.3	3,871.3	0.00	0.00	0.00	
11,100.0	90.17	180.69	7,132.5	-3,803.2	1,176.1	3,968.6	0.00	0.00	0.00	
11,200.0	90.17	180.69	7,132.2	-3,903.2	1,174.9	4,065.9	0.00	0.00	0.00	
11,300.0	90.17	180.69	7,131.9	-4,003.2	1,173.7	4,163.2	0.00	0.00	0.00	
11,400.0	90.17	180.69	7,131.6	-4,103.2	1,172.5	4,260.5	0.00	0.00	0.00	
11,500.0	90.17	180.69	7,131.3	-4,203.2	1,171.3	4,357.8	0.00	0.00	0.00	
11,600.0	90.17	180.69	7,131.0	-4,303.2	1,170.1	4,455.1	0.00	0.00	0.00	
11,700.0	90.17	180.69	7,130.7	-4,403.2	1,168.9	4,552.3	0.00	0.00	0.00	
11,800.0	90.17	180.69	7,130.4	-4,503.1	1,167.6	4,649.6	0.00	0.00	0.00	
11,900.0	90.17	180.69	7,130.1	-4,603.1	1,166.4	4,746.9	0.00	0.00	0.00	
12,000.0	90.17	180.69	7,129.8	-4,703.1	1,165.2	4,844.2	0.00	0.00	0.00	
12,100.0	90.17	180.69	7,129.5	-4,803.1	1,164.0	4,941.5	0.00	0.00	0.00	
12,200.0	90.17	180.69	7,129.2	-4,903.1	1,162.8	5,038.8	0.00	0.00	0.00	
12,300.0	90.17	180.69	7,128.9	-5,003.1	1,161.6	5,136.1	0.00	0.00	0.00	
12,400.0	90.17	180.69	7,128.6	-5,103.1	1,160.4	5,233.4	0.00	0.00	0.00	
12,450.5	90.17	180.69	7,128.5	-5,153.6	1,159.8	5,282.5	0.00	0.00	0.00	
TD at 12450.5 - BHL 470'FSL, 1625'FWL, SEC.12										

Targets										
Target Name	Dip Angle (°)	Dip Dir. (°)	TVD (ft)	+N/-S (ft)	+E/-W (ft)	Northing (ft)	Easting (ft)	Latitude	Longitude	
- hit/miss target										
- Shape										
LPL 50'FNL, 1625'FW	0.00	0.00	7,142.5	-397.1	1,217.1	1,429,037.58	3,246,129.80	40.507737	-104.614842	
- plan hits target center										
- Point										
SHL 316'FSL, 405'FW	0.00	0.00	1.0	0.0	0.0	1,429,422.54	3,244,908.81	40.508827	-104.619219	
- plan hits target center										
- Point										
BHL 470'FSL, 1625'FW	0.00	0.00	7,128.5	-5,153.6	1,159.8	1,424,280.87	3,246,119.71	40.494681	-104.615049	
- plan hits target center										
- Point										

Casing Points					
Measured Depth (ft)	Vertical Depth (ft)	Name	Casing Diameter (")	Hole Diameter (")	
7,693.6	7,142.5	7"	7	7-1/2	

<b>Database:</b>	EDMNEW	<b>Local Co-ordinate Reference:</b>	Well Wilkinson H-12HC
<b>Company:</b>	Bayswater Exploration & Production, LLC	<b>TVD Reference:</b>	WELL @ 4797.5ft (RKB - 22.5')
<b>Project:</b>	SEC.1-T6N-R65W	<b>MD Reference:</b>	WELL @ 4797.5ft (RKB - 22.5')
<b>Site:</b>	Wilkinson 1-P Pad Sec.1-T6N-R65W	<b>North Reference:</b>	True
<b>Well:</b>	Wilkinson H-12HC	<b>Survey Calculation Method:</b>	Minimum Curvature
<b>Wellbore:</b>	Wellbore #1		
<b>Design:</b>	Plan #1 (7-29-15)		

Plan Annotations				
Measured Depth (ft)	Vertical Depth (ft)	Local Coordinates		Comment
		+N/-S (ft)	+E/-W (ft)	
1,000.0	1,000.0	0.0	0.0	KOP - Start Build 1.00
2,315.4	2,303.9	43.7	143.9	Start 4201.8 hold at 2315.4 MD
6,517.3	6,395.5	321.5	1,058.9	Start DLS 8.00 TFO 107.11
7,693.6	7,142.5	-397.1	1,217.1	Start 4756.9 hold at 7693.6 MD
12,450.5	7,128.5	-5,153.6	1,159.8	TD at 12450.5