

# WILKINSON H-12HC WELL LOCATION CERTIFICATE

NW COR. SEC. 1  
3/4" ALUM. CAP  
PLS 4392, 1994

S 88°46'00" E 2648.99'

S 88°45'49" E 2649.00'

N 1/4 COR. SEC. 1  
3/4" ALUM. CAP  
PLS 4392, 1994

NE COR. SEC. 1  
3/4" ALUM. CAP  
PLS 10855, 1993

No. 2

No. 2

**NOTES:**

BH LOCATION PROVIDED BY CLIENT.  
LAND SURFACE USE-IMPROVED PASTURE  
EXISTING WELL WILKINSON 1-33 IS 541' NE  
AT 625' FSL & 855' FWL  
SEE ATTACHED MAP FOR ADDITIONAL  
IMPROVEMENTS WITHIN 500'.

PDOP= 2.7

GPS OPERATOR: DANIEL REXFORD

No. 1

No. 1

W 1/4 COR. SEC. 1  
2 1/2" ALUM. CAP  
PLS 24307, 2012

E 1/4 COR. SEC. 1  
2 1/2" ALUM. CAP  
PLS 12374

**SURFACE LOCATION**  
GROUND ELEVATION= 4775'  
NAD83  
LATITUDE= 40.508827°  
LONGITUDE= 104.619219°

**LANDING POINT LOCATION**  
NAD83  
LATITUDE= 40.507737°  
LONGITUDE= 104.614842°

**BOTTOM HOLE LOCATION**  
NAD83  
LATITUDE= 40.494681°  
LONGITUDE= 104.615049°

LP- 50' FNL  
1625' FWL  
BHL- 470' FSL  
1625' FWL  
SW COR. SEC. 1  
2 1/2" ALUM. CAP  
ILLEGIBLE

405'

WILKINSON H-12HC

S 72°30'37" E 1280.23'

S 1/4 COR. SEC. 1  
2 1/2" ALUM. CAP  
PLS 12374, 1993

SE COR. SEC. 1  
3/4" ALUM. CAP  
PLS 7242, 1998

N 89°07'21" W 2650.30'

N 89°07'31" W 2650.27'  
(BASIS OF BEARINGS) SEE NOTE 2

S 00°07'17" W 4757.01'

**LEGEND**

- = EXISTING MONUMENT
- = CALCULATED POSITION
- = PROPOSED WELL
- ◆ = EXISTING WELL
- ◆ = BOTTOM HOLE
- ▲ = LANDING POINT
- LP = LANDING POINT
- BHL = BOTTOM HOLE

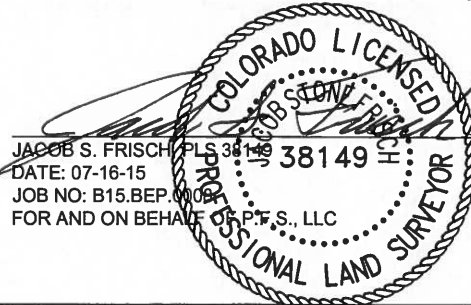
**NOTES:**

- THIS FIELD SURVEY CONFORMS TO THE MINIMUM STANDARDS SET BY THE C.O.G.C.C., RULE NO. 215
- BEARINGS ARE BASED ON THE ASSUMPTION THAT THE SOUTH LINE OF THE SOUTHEAST QUARTER OF SECTION 1, BEARS N89°07'31" W BETWEEN THE MONUMENTS SHOWN HEREON.
- GRID DISTANCES ARE SHOWN, AS GPS MEASURED IN THE FIELD, WITH TIES TO WELLS MEASURED PERPENDICULAR TO SECTION LINES. TO GET GROUND DISTANCES MULTIPLY THE SHOWN DISTANCE BY 1.000257288.
- ELEVATIONS SHOWN ARE NAVD 88, AS DERIVED BY GPS OBSERVATIONS.
- FIELD VERIFICATION OF MONUMENTS COMPLETED WITHIN 1 YEAR OF SIGNATURE DATE.

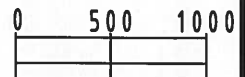
NOTICE: ACCORDING TO COLORADO LAW YOU MUST COMMENCE ANY LEGAL ACTION BASED UPON ANY DEFECT IN THIS SURVEY WITHIN THREE YEARS AFTER YOU FIRST DISCOVER SUCH DEFECT. IN NO EVENT MAY ANY ACTION BASED UPON ANY DEFECT IN THIS SURVEY BE COMMENCED MORE THAN TEN YEARS FROM THIS SAID DATE OF THIS CERTIFICATION SHOWN HEREON.

**WELL WILKINSON H-12HC TO BE  
LOCATED 316' FSL AND 405' FWL**



I, JACOB S. FRISCH, A LICENSED PROFESSIONAL LAND SURVEYOR IN THE STATE OF COLORADO DO HEREBY CERTIFY TO **BAYSWATER EXPLORATION & PRODUCTION, LLC**, THAT THE SURVEY AND WELL LOCATION CERTIFICATE SHOWN HEREON WERE DONE BY ME OR UNDER MY DIRECT SUPERVISION AND THAT THE DRAWING SHOWN HEREON ACCURATELY DEPICTS THE PROPOSED LOCATION OF THE WELL. THIS CERTIFICATE DOES NOT REPRESENT A LAND SURVEY PLAT OR IMPROVEMENT SURVEY PLAT AS DEFINED BY C.R.S. 38-51-102 AND CANNOT BE RELIED UPON TO DETERMINE OWNERSHIP.



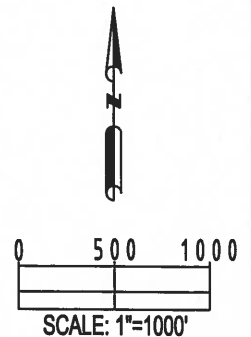
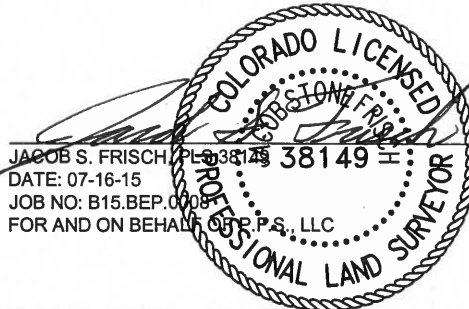
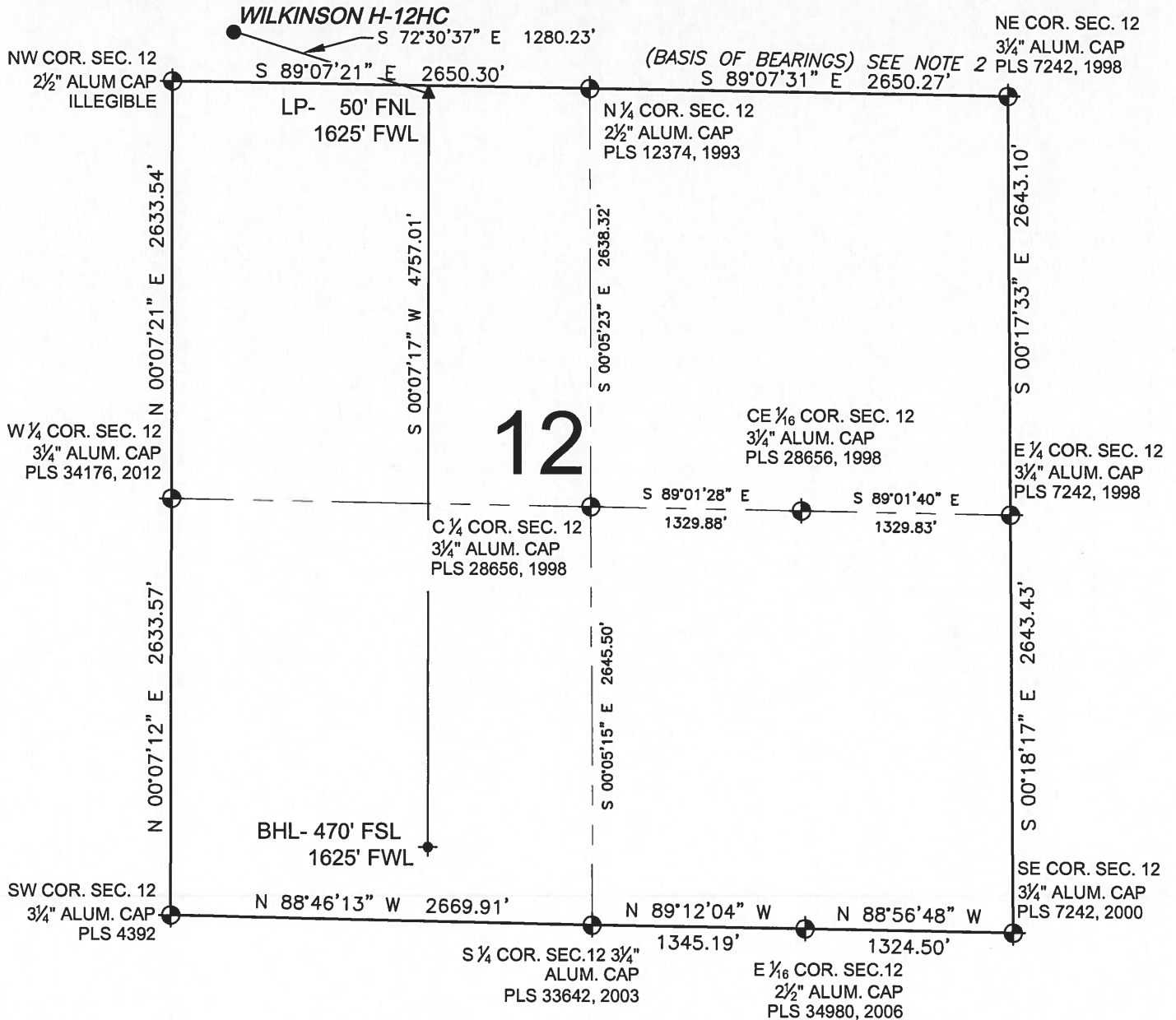
SCALE: 1"=1000'



SHEET 1 OF 2

PREPARED BY:  <b>PFS</b> Petroleum Field Services, LLC 7535 Hilltop Circle Denver, CO 80221	FIELD DATE: 06-23-15 DRAWING DATE: 07-13-15 BY: CSG CHECKED BY: JWJ	WELL NAME: WILKINSON H-12HC SURFACE LOCATION: SW 1/4 SW 1/4, SEC. 1, T6N, R65W, 6TH P.M. WELD COUNTY, COLORADO	PREPARED FOR:  <b>BAYSWATER</b> EXPLORATION AND PRODUCTION, LLC
----------------------------------------------------------------------------------------------------------------------------------------------------------------------------------------------	------------------------------------------------------------------------------------------	----------------------------------------------------------------------------------------------------------------------------	------------------------------------------------------------------------------------------------------------------------------------------------------------

# WILKINSON H-12HC WELL LOCATION CERTIFICATE



## LEGEND

- ⊕ = EXISTING MONUMENT
- = CALCULATED POSITION
- = PROPOSED WELL
- ◆ = EXISTING WELL
- ◆ = BOTTOM HOLE
- ▲ = LANDING POINT
- LP = LANDING POINT
- BHL = BOTTOM HOLE

<b>PREPARED BY:</b>  <b>PFS</b> Petroleum Field Services, LLC 7535 Hilltop Circle Denver, CO 80221	<b>FIELD DATE:</b> 06-23-15	<b>WELL NAME:</b> WILKINSON H-12HC	<b>PREPARED FOR:</b>  <b>BAYSWATER</b> EXPLORATION AND PRODUCTION, LLC
	<b>DRAWING DATE:</b> 07-13-15	<b>SURFACE LOCATION:</b> SW 1/4 SW 1/4, SEC. 1, T6N, R65W, 6TH P.M. WELD COUNTY, COLORADO	
	<b>BY:</b> CSG	<b>CHECKED BY:</b> JWJ	

SHEET 2 OF 2