

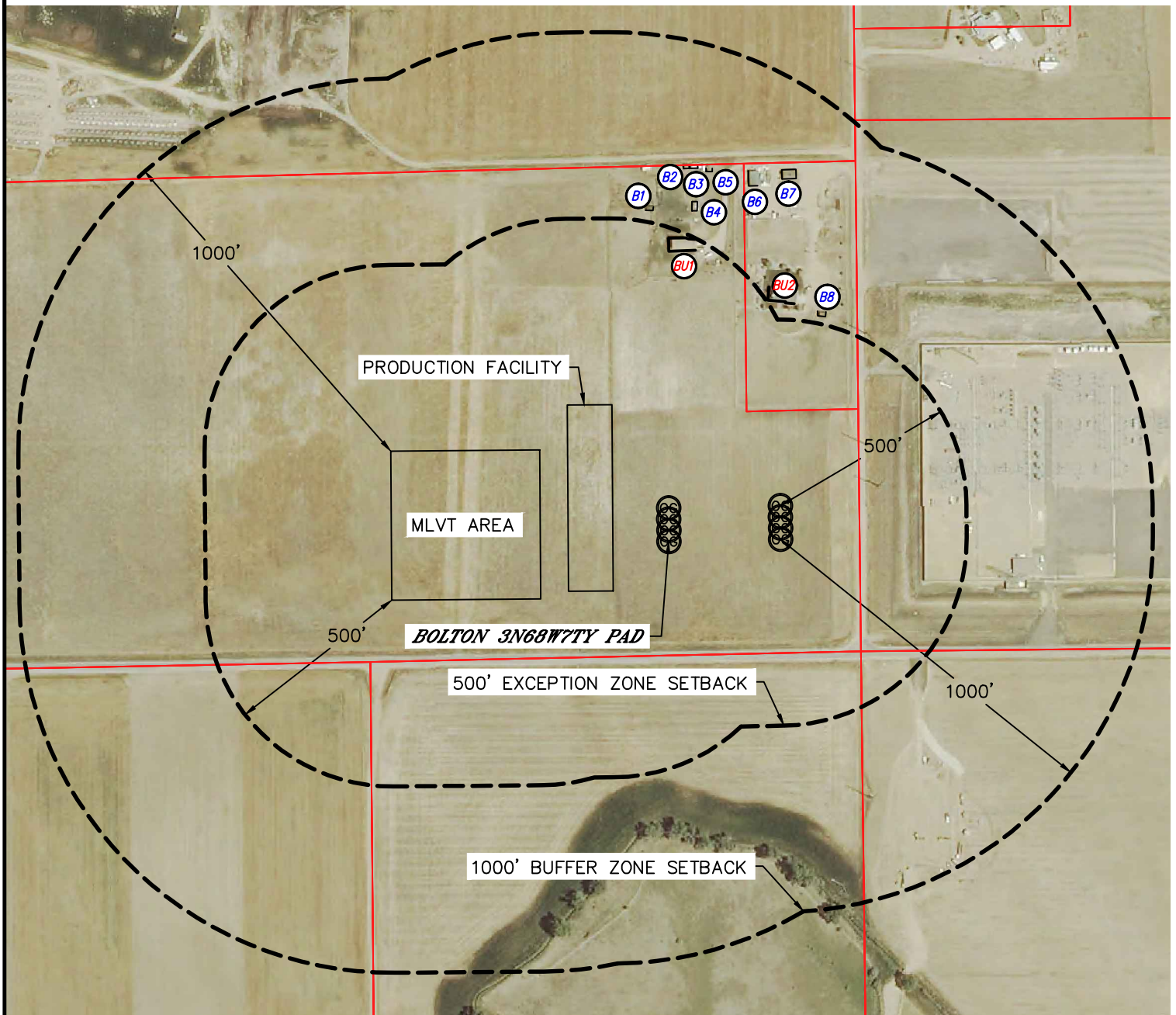


Lat40°, Inc. 1635 Foxtrail Drive, Suite 325 Loveland, CO 970-776-3321

NOTIFICATION ZONE DRAWING

BOLTON 3N68W7TY PAD

SECTION: 7
TOWNSHIP: 3N
RANGE: 68W



EXCEPTION ZONE:

 BUILDING UNIT BU1 ±439' NE

BUFFER ZONE:

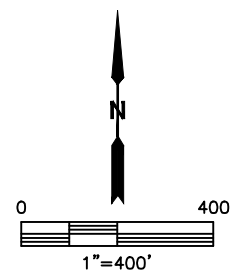
 BUILDING UNIT BU2 ±504' NE

LEGEND

 PROPERTY LINE

 BUILDING

 BUILDING UNIT



DATE: 12/31/2014
PROJECT#: 2014102