

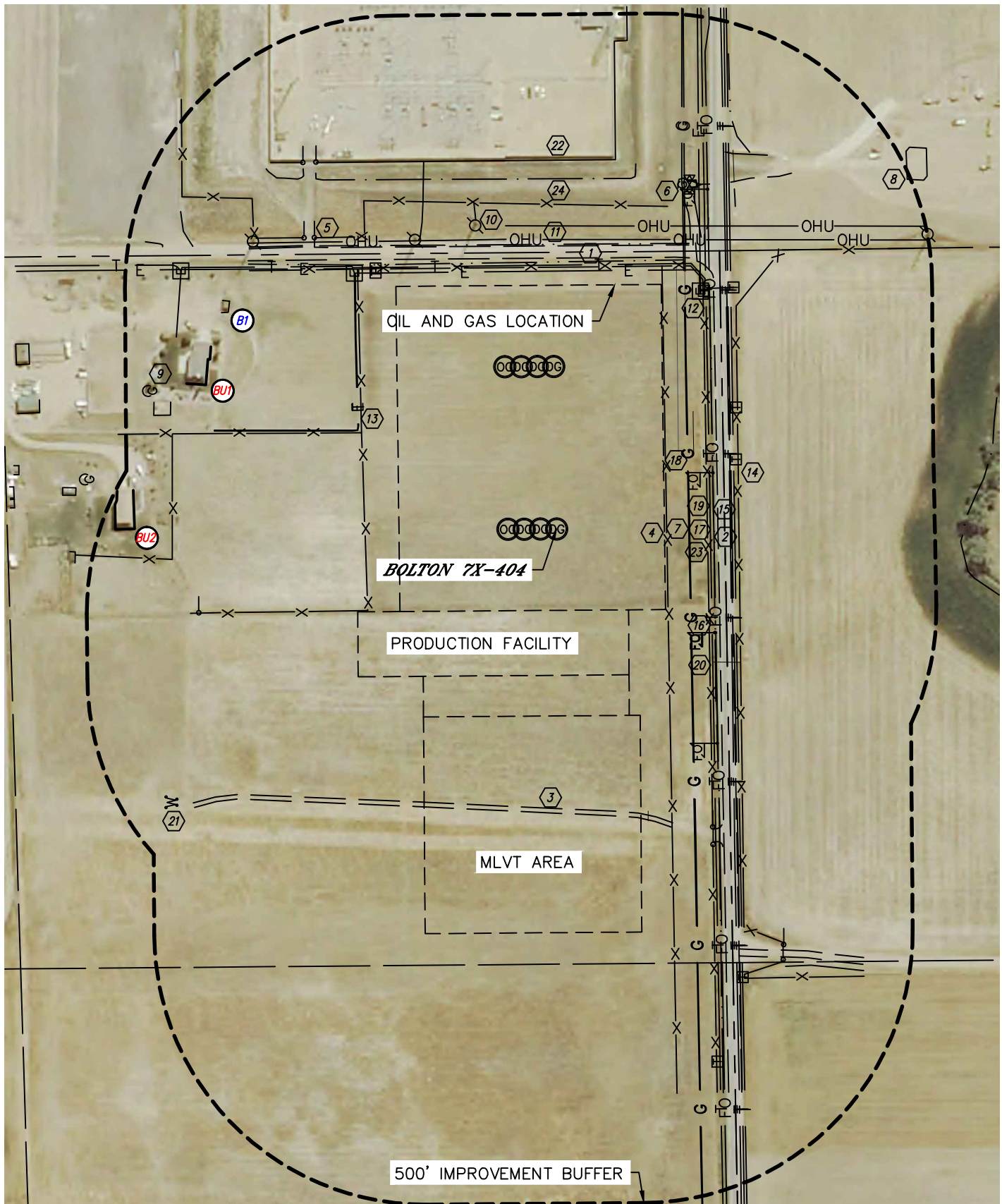


Lat40°, Inc. 1635 Foxtrail Drive, Suite 325 Loveland, CO 970-776-3321

LOCATION DRAWING

BOLTON 3N68W7TY PAD

SECTION: 7
TOWNSHIP: 3N
RANGE: 68W



SHEET 1 OF 2

DATE: 12/31/2014
PROJECT#: 2014102



Lat40°, Inc. 1635 Foxtrail Drive, Suite 325 Loveland, CO 970-776-3321

LOCATION DRAWING

BOLTON 3N68W7TY PAD

SECTION: 7
TOWNSHIP: 3N
RANGE: 68W

IMPROVEMENTS:

(MEASURED FROM THE PROPOSED BOLTON 7X-404 WELL LOCATION)

-  BUILDING UNIT **BU1** 700' NE, **BU2** 779' N
-  BUILDING **B1** 726' NE
-  COUNTY ROAD 3 500' E
-  COUNTY ROAD 34 298' S
-  ROAD 515' W, 590' & 716' SE, 845' SW, 850' NE
-  FENCE 203', 278' & 337' S, 354' & 710' N, 483' & 599' E, 743' NE
-  GATE 699' & 810' NE, 678' NW
-  GAS VALVE 681' SE
-  GAS LINE LOCATES ±244' & ±245' S, ±688' SE
-  PRODUCTION EQUIPMENT 914' SE (ENCANA OIL & GAS (USA) INC)
-  PROPANE TANK 796' NE
-  UTILITY POLE 580', 594' & 772' NE, 875' SE
-  OVERHEAD UTILITY LINE 534' & 560' E, 589' NE
-  ELECTRIC PEDESTAL 513' SE, 602' & 842' NE
-  ELECTRIC LINE LOCATES ±411' NE, ±476' E, ±515' SW
-  TELEPHONE PEDESTAL 355', 400', 517' & 553' SE, 579' & 586' NE, 896' & 1027' SW
-  TELEPHONE LINE LOCATES ±284', ±321', ±324' & ±329' S, ±410' & ±787' NE, ±487' E
-  FIBER OPTICS MARKER 307' & 686' SE, 350' & 494' SW
-  FIBER OPTIC LINE LOCATES ±290' S, ±592' NE
-  PROPOSED PIPELINE STAKES 267' & 435' SE
-  STEEL PIPE 246' S, 289' SE
-  CULVERT 380', 435' & 622' SW, 719' SE
-  WOOD POST 872' NW
-  STONE WALL 681' E, 823' NE
-  BARROW DITCH 290' S, 493' & 525' E, 620', 681' & 752' SE
-  DITCH 646' E, 801' NE, 911' SW