

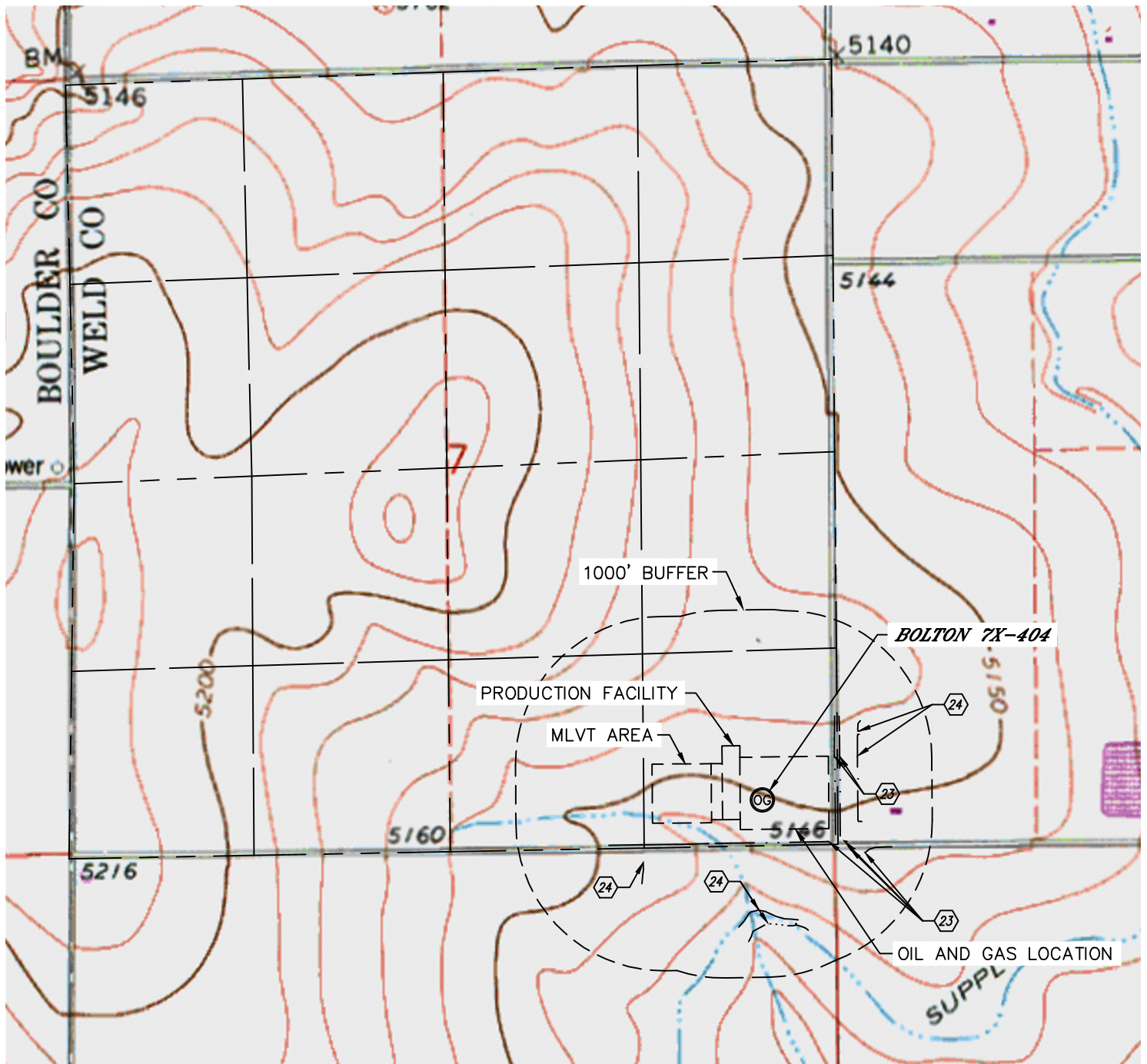


Lat40°, Inc. 1635 Foxtrail Drive, Suite 325 Loveland, CO 970-776-3321

# HYDROLOGY MAP

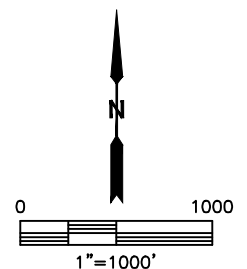
BOLTON 3N68W7TY PAD

SECTION: 7  
TOWNSHIP: 3N  
RANGE: 68W



DISTANCES MEASURED FROM THE EDGE OF THE OIL AND GAS LOCATION.

- ②③ BARROW DITCH 41' & 76' E, 89' S, 133', 198' & 294' SE
- ②④ DITCH 197' E, 266' NE, 273' SW, 547' & 637' S



NEAREST DOWN GRADIENT SURFACE WATER: BARROW DITCH 89' S

DATE: 12/31/2014  
PROJECT#: 2014102