

1801 Broadway
Suite 500
Denver, Colorado 80202



Allison Linz
Regulatory Technician
Tel: 303.398.0355
E-mail: alinz@gwogco.com

August 11, 2015

Colorado Oil and Gas Conservation Commission
1120 Lincoln Street, Suite 801
Denver, Colorado 80203

RE: **Proposed Wellbore Spacing Unit**
Leffler FE 20-179HN

Niobrara New Drill
Township 6 North, Range 66 West, 6th P.M.
NENE Section 21
Weld County, Colorado

Dear Director:

Great Western Operating Company, LLC is planning to drill the above captioned well in accordance with the provisions of COGCC Rule 318A.e.

Great Western proposed wellbore spacing unit consists of:

- **S2N2, N2S2 Sec 20, S2N2, N2S2 Sec 21**
- **640 Acres**

The 30 day notification time period has passed and we have not received any objections to such well locations or proposed spacing unit, therefore Great Western hereby requests the Director to approve the above mentioned well. Great Western Operating Company, LLC respectfully requests that the COGCC review the enclosed map illustrating the proposed wellbore spacing unit.

Respectfully,

Allison Linz

Allison Linz
Regulatory Technician
Great Western Operating Company, LLC

T6N, R66W, 6th P.M.

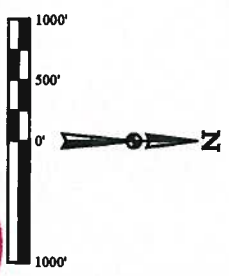
GREAT WESTERN OIL & GAS COMPANY

LEFTFLER FE 20-1794N
NE 1/4 NE 1/4 SECTION 21, T6N, R66W, 6th P.M.
WELD COUNTY, COLORADO

BASE OF BEARINGS
BASIS OF BEARINGS IS A G.P.S. OBSERVATION
USGS COOPERATIVE BASE NETWORK CONTROL STATION,
DESIGNATION "VERMILYEA", NGS DATA SHEET LISTS THE
NAVD 88 ELEVATION AS BEING 5026 FEET.

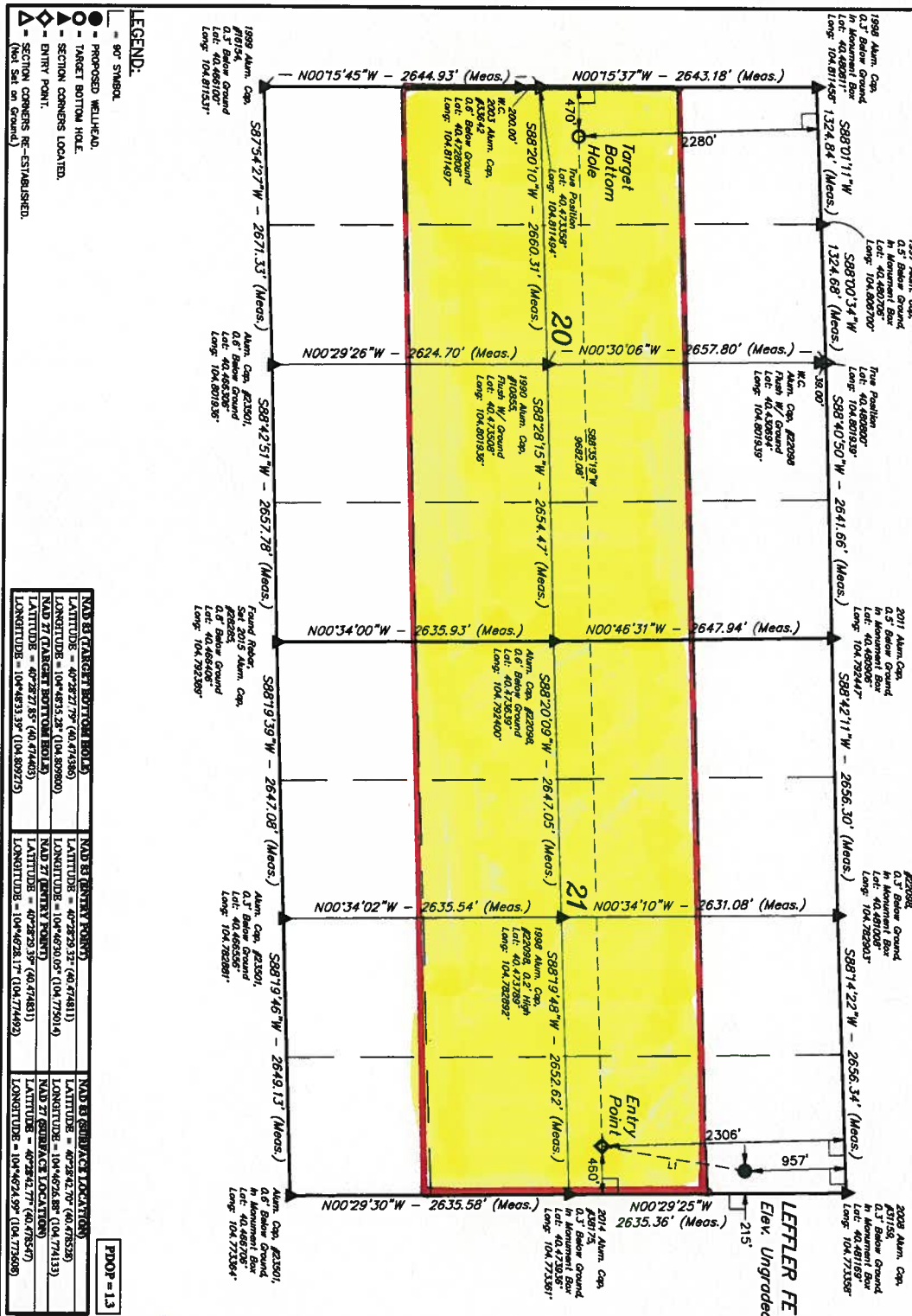
LEFTFLER FE 20-1794N
Elev. Ungraded Ground = 4751.2'

LINE TABLE	
LINE	DIRECTION LENGTH
L1	S08°45'42"W 1376.72'



THIS IS TO CERTIFY THAT THE ABOVE DESCRIBED LAND IS THE SAME AS THAT SHOWN ON THE MAP OF THE LAND AND THAT THE SAME ARE TRUE AND CORRECT TO THE BEST OF MY KNOWLEDGE AND BELIEF.

[Signature]
REGISTERED LAND SURVEYOR
STATE OF COLORADO, NO. 2293
FALL 2015



NAVD 83 TARGET BOTTOM HOLE	NAVD 83 ENTRY POINT	NAVD 83 BOUNDARY LOCATION
LATITUDE = 40°28'27.79" (47.41366)	LATITUDE = 40°28'25.35" (47.41411)	LATITUDE = 40°28'42.70" (46.47852)
LONGITUDE = 104°49'51.35" (104.830980)	LONGITUDE = 104°49'30.05" (104.775914)	LONGITUDE = 104°49'26.88" (104.77413)
NAVD 77 TARGET BOTTOM HOLE	NAVD 77 ENTRY POINT	NAVD 77 BOUNDARY LOCATION
LATITUDE = 40°28'27.85" (47.41443)	LATITUDE = 40°28'25.35" (47.41431)	LATITUDE = 40°28'42.77" (46.47854)
LONGITUDE = 104°49'53.35" (104.830925)	LONGITUDE = 104°49'28.17" (104.774492)	LONGITUDE = 104°49'24.95" (104.77358)

UTLTAH
CONSTRUCTION & LAND SURVEYING

UTELS, LLC
Corporate Office • 65 South 200 East
Vernal, UT 84078 • (435) 789-1017

SUBMITTED BY: DALLAS NIELSEN, B.C. DATE: 04-21-15
DRAWN BY: J.C.B. DATE: 04-21-15
SCALE: 1" = 1000' REVISION: 00-00-00

WELL LOCATION PLAN

- LEGEND:**
- 90° SYMBOL
 - PROPOSED WELLHEAD
 - TARGET BOTTOM HOLE
 - SECTION CORNERS LOCATED
 - ENTRY POINT
 - SECTION CORNERS RE-ESTABLISHED (Not Set on Ground)