

EXTRACTION OIL & GAS

WELD COUNTY, COLORADO (NAD 83)

NW NE SEC. 5 T5N R65W 6th P.M.

DT-FORBES C6-5-6

ORIGINAL WELLBORE

04 August, 2015

Plan: PROPOSAL #3

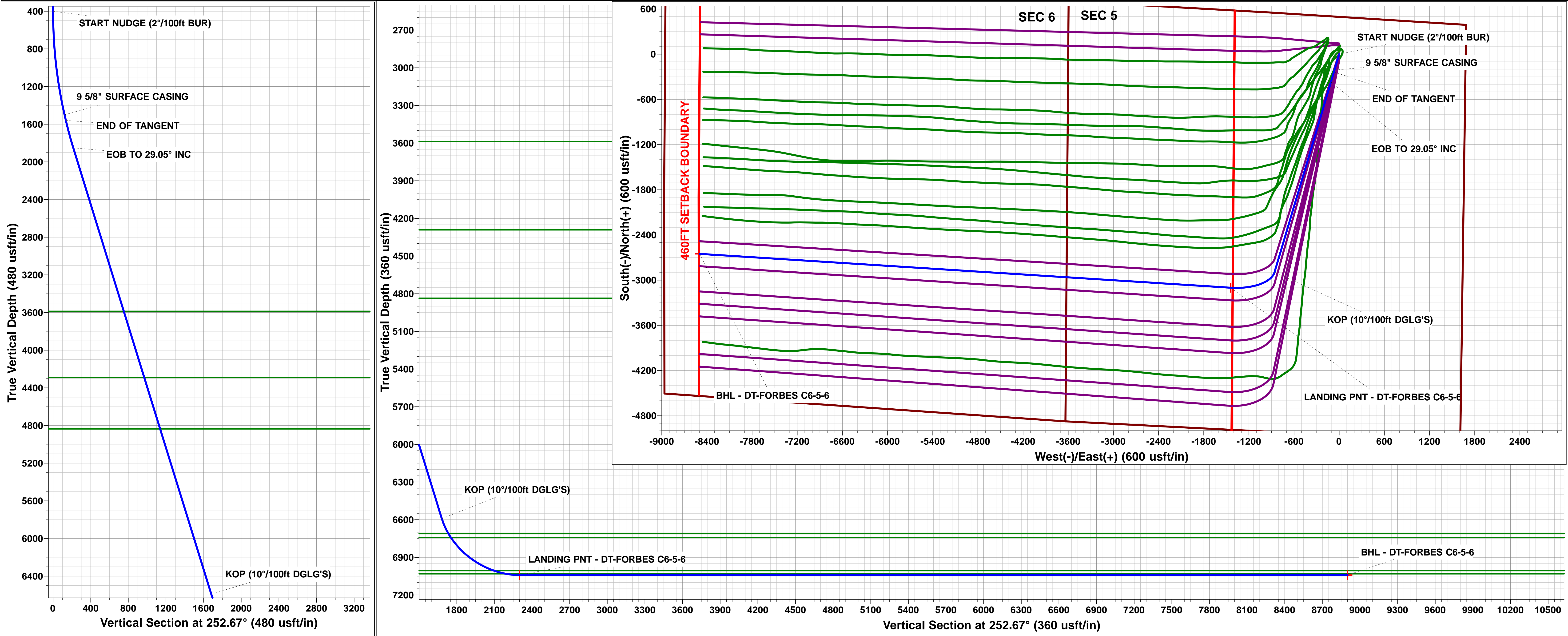
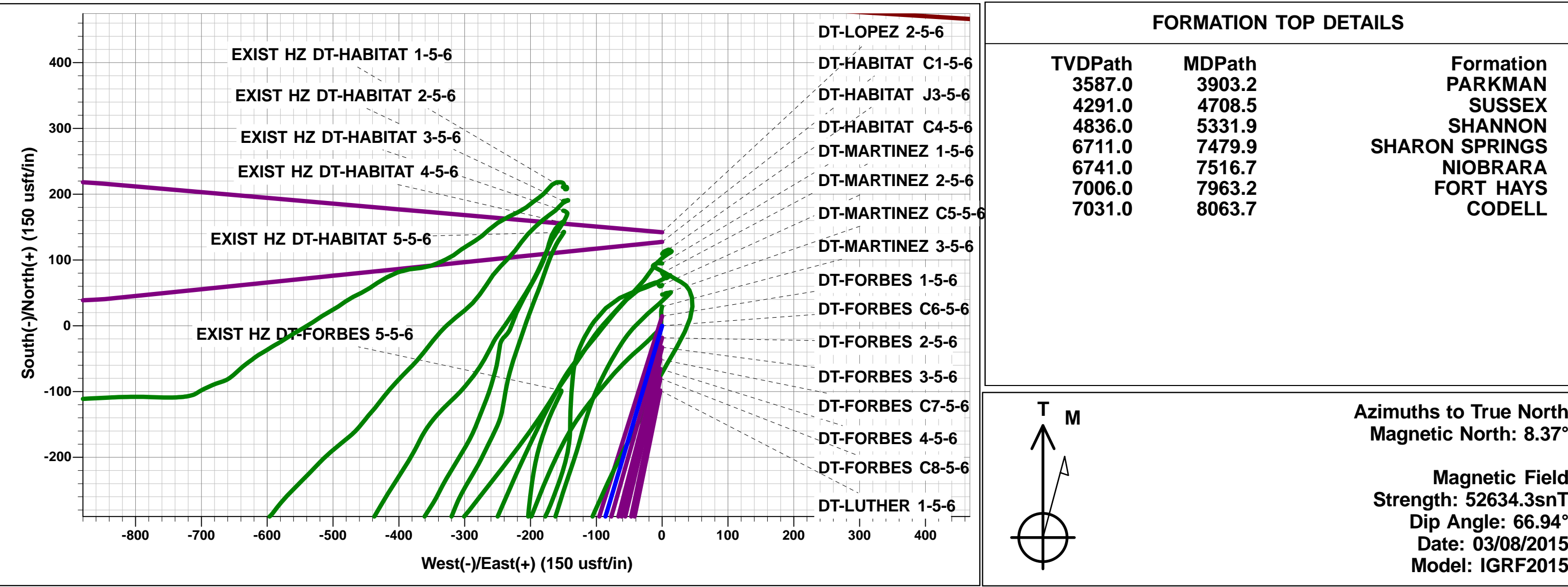




Project: WELD COUNTY, COLORADO (NAD 83)
Site: NW NE SEC. 5 T5N R65W 6th P.M.
Well: DT-FORBES C6-5-6
Wellbore: ORIGINAL WELLBORE
Design: PROPOSAL #3

ANNOTATIONS									
TVD	MD	Inc	Azi	+N/-S	+E/-W	VSect	Dep	Annotation	
400.0	400.0	0.00	0.00	0.0	0.0	0.0	0.0	START NUDGE (2°/100ft BUR)	
1500.0	1529.0	22.58	196.52	-210.5	-62.4	122.3	219.6	9 5/8" SURFACE CASING	
1560.0	1594.0	22.58	196.52	-234.5	-69.5	136.2	244.6	END OF TANGENT	
1851.1	1917.5	29.05	196.52	-369.5	-109.6	214.6	385.4	EOB TO 29.05° INC	
6591.7	7340.2	29.05	196.52	-2893.7	-858.3	1681.1	3018.3	KOP (10°/100ft DGLG'S)	
7041.0	8178.1	90.00	273.65	-3100.2	-1442.2	2300.0	3706.8	LANDING PNT - DT-FORBES C6-5-6	
7041.0	15247.2	90.00	273.65	-2650.7	-8497.0	8900.8	10775.9	BHL - DT-FORBES C6-5-6	

WELLBORE TARGET DETAILS (LAT/LONG)					
Name	TVD	+N/-S	+E/-W	Latitude	Longitude
LANDING PNT - DT-FORBES C6-5-6	7041.0	-3100.2	-1442.2	40.426630	-104.688910
BHL - DT-FORBES C6-5-6	7041.0	-2650.7	-8497.0	40.427860	-104.714250



Planning Report



Database:	EDM 5000.1 Single User Db	Local Co-ordinate Reference:	Well DT-FORBES C6-5-6
Company:	EXTRACTION OIL & GAS	TVD Reference:	KB-EST @ 4658.0usft
Project:	WELD COUNTY, COLORADO (NAD 83)	MD Reference:	KB-EST @ 4658.0usft
Site:	NW NE SEC. 5 T5N R65W 6th P.M.	North Reference:	True
Well:	DT-FORBES C6-5-6	Survey Calculation Method:	Minimum Curvature
Wellbore:	ORIGINAL WELLBORE		
Design:	PROPOSAL #3		

Project	WELD COUNTY, COLORADO (NAD 83)		
Map System:	US State Plane 1983	System Datum:	Mean Sea Level
Geo Datum:	North American Datum 1983		
Map Zone:	Colorado Northern Zone		Using geodetic scale factor

Site		NW NE SEC. 5 T5N R65W 6th P.M.			
Site Position:		Northing:	1,402,409.16 usft	Latitude:	40.435150
From:	Lat/Long	Easting:	3,226,987.53 usft	Longitude:	-104.684560
Position Uncertainty:	0.0 usft	Slot Radius:	1.10000 ft	Grid Convergence:	0.53 °

Well	DT-FORBES C6-5-6					
Well Position	+N/-S	-3.7 usft	Northing:	1,402,407.62 usfi	Latitude:	40.435140
	+E/-W	231.1 usft	Easting:	3,227,218.60 usfi	Longitude:	-104.683730
Position Uncertainty		0.0 usft	Wellhead Elevation:	usfi	Ground Level:	4,642.0 usft

Wellbore	ORIGINAL WELLBORE				
Magnetics	Model Name	Sample Date	Declination (°)	Dip Angle (°)	Field Strength (nT)
	IGRF2015	03/08/2015	8.37	66.94	52,634

Design	PROPOSAL #3			
Audit Notes:				
Version:	Phase:	PROTOTYPE	Tie On Depth:	0.0
Vertical Section:	Depth From (TVD) (usft)	+N/-S (usft)	+E/-W (usft)	Direction (°)
	0.0	0.0	0.0	252.67

Plan Sections											
MD (usft)	Inc (°)	Azi (°)	Vertical Depth	SS (usft)	+N/-S (usft)	+E/-W (usft)	Dogleg Rate (°/100usf)	Build Rate (°/100usf)	Turn Rate (°/100usf)	TFO (°)	Target
0.0	0.00	0.00	0.0	-4,658.0	0.0	0.0	0.00	0.00	0.00	0.00	
400.0	0.00	0.00	400.0	-4,258.0	0.0	0.0	0.00	0.00	0.00	0.00	
1,529.0	22.58	196.52	1,500.0	-3,158.0	-210.5	-62.4	2.00	2.00	0.00	196.52	
1,594.0	22.58	196.52	1,560.0	-3,098.0	-234.5	-69.5	0.00	0.00	0.00	0.00	
1,917.5	29.05	196.52	1,851.1	-2,806.9	-369.5	-109.6	2.00	2.00	0.00	0.00	
1,917.5	29.05	196.52	1,851.1	-2,806.9	-369.5	-109.6	10.00	-9.98	1.35	176.24	
7,340.2	29.05	196.52	6,591.7	1,933.7	-2,893.7	-858.3	0.00	0.00	0.00	0.00	
8,178.1	90.00	273.65	7,041.0	2,383.0	-3,100.2	-1,442.2	10.00	7.27	9.20	78.70	LANDING PNT - D1
15,247.2	90.00	273.65	7,041.0	2,383.0	-2,650.7	-8,497.0	0.00	0.00	0.00	0.00	BHL - DT-FORBES

Planning Report



Database:	EDM 5000.1 Single User Db	Local Co-ordinate Reference:	Well DT-FORBES C6-5-6
Company:	EXTRACTION OIL & GAS	TVD Reference:	KB-EST @ 4658.0usft
Project:	WELD COUNTY, COLORADO (NAD 83)	MD Reference:	KB-EST @ 4658.0usft
Site:	NW NE SEC. 5 T5N R65W 6th P.M.	North Reference:	True
Well:	DT-FORBES C6-5-6	Survey Calculation Method:	Minimum Curvature
Wellbore:	ORIGINAL WELLBORE		
Design:	PROPOSAL #3		

Planned Survey										
MD (usft)	Inc (°)	Azi (°)	TVD (usft)	SS (usft)	+N/-S (usft)	+E/-W (usft)	Vertical Section (usft)	Dogleg Rate (°/100usft)	Build Rate (°/100usft)	Turn Rate (°/100usft)
0.0	0.00	0.00	0.0	4,658.00	0.0	0.0	0.0	0.00	0.00	0.00
100.0	0.00	0.00	100.0	4,558.00	0.0	0.0	0.0	0.00	0.00	0.00
200.0	0.00	0.00	200.0	4,458.00	0.0	0.0	0.0	0.00	0.00	0.00
300.0	0.00	0.00	300.0	4,358.00	0.0	0.0	0.0	0.00	0.00	0.00
START NUDGE (2°/100ft BUR)										
400.0	0.00	0.00	400.0	4,258.00	0.0	0.0	0.0	0.00	0.00	0.00
500.0	2.00	196.52	500.0	4,158.02	-1.7	-0.5	1.0	2.00	2.00	0.00
600.0	4.00	196.52	599.8	4,058.16	-6.7	-2.0	3.9	2.00	2.00	0.00
700.0	6.00	196.52	699.5	3,958.55	-15.0	-4.5	8.7	2.00	2.00	0.00
800.0	8.00	196.52	798.7	3,859.30	-26.7	-7.9	15.5	2.00	2.00	0.00
900.0	10.00	196.52	897.5	3,760.53	-41.7	-12.4	24.2	2.00	2.00	0.00
1,000.0	12.00	196.52	995.6	3,662.38	-60.0	-17.8	34.9	2.00	2.00	0.00
1,100.0	14.00	196.52	1,093.1	3,564.94	-81.6	-24.2	47.4	2.00	2.00	0.00
1,200.0	16.00	196.52	1,189.6	3,468.36	-106.4	-31.6	61.8	2.00	2.00	0.00
1,300.0	18.00	196.52	1,285.3	3,372.73	-134.4	-39.9	78.1	2.00	2.00	0.00
1,400.0	20.00	196.52	1,379.8	3,278.18	-165.6	-49.1	96.2	2.00	2.00	0.00
1,500.0	22.00	196.52	1,473.2	3,184.83	-200.0	-59.3	116.2	2.00	2.00	0.00
9 5/8" SURFACE CASING										
1,529.0	22.58	196.52	1,500.0	3,158.00	-210.5	-62.4	122.3	2.00	2.00	0.00
END OF TANGENT										
1,594.0	22.58	196.52	1,560.0	3,097.98	-234.5	-69.5	136.2	0.00	0.00	0.00
1,600.0	22.70	196.52	1,565.6	3,092.44	-236.7	-70.2	137.5	2.00	2.00	0.00
1,700.0	24.70	196.52	1,657.1	3,000.88	-275.2	-81.6	159.9	2.00	2.00	0.00
1,800.0	26.70	196.52	1,747.2	2,910.78	-316.8	-94.0	184.0	2.00	2.00	0.00
1,900.0	28.70	196.52	1,835.8	2,822.24	-361.3	-107.2	209.9	2.00	2.00	0.00
EOB TO 29.05° INC										
1,917.5	29.05	196.52	1,851.1	2,806.90	-369.5	-109.6	214.6	2.00	2.00	0.00
2,000.0	29.05	196.52	1,923.2	2,734.80	-407.9	-121.0	236.9	0.00	0.00	0.00
2,100.0	29.05	196.52	2,010.6	2,647.37	-454.4	-134.8	264.0	0.00	0.00	0.00
2,200.0	29.05	196.52	2,098.0	2,559.95	-501.0	-148.6	291.0	0.00	0.00	0.00
2,300.0	29.05	196.52	2,185.5	2,472.53	-547.5	-162.4	318.1	0.00	0.00	0.00
2,400.0	29.05	196.52	2,272.9	2,385.11	-594.1	-176.2	345.1	0.00	0.00	0.00
2,500.0	29.05	196.52	2,360.3	2,297.69	-640.6	-190.0	372.2	0.00	0.00	0.00
2,600.0	29.05	196.52	2,447.7	2,210.27	-687.2	-203.8	399.2	0.00	0.00	0.00
2,700.0	29.05	196.52	2,535.2	2,122.85	-733.7	-217.6	426.2	0.00	0.00	0.00
2,800.0	29.05	196.52	2,622.6	2,035.42	-780.3	-231.4	453.3	0.00	0.00	0.00
2,900.0	29.05	196.52	2,710.0	1,948.00	-826.8	-245.2	480.3	0.00	0.00	0.00
3,000.0	29.05	196.52	2,797.4	1,860.58	-873.3	-259.0	507.4	0.00	0.00	0.00
3,100.0	29.05	196.52	2,884.8	1,773.16	-919.9	-272.8	534.4	0.00	0.00	0.00
3,200.0	29.05	196.52	2,972.3	1,685.74	-966.4	-286.6	561.5	0.00	0.00	0.00
3,300.0	29.05	196.52	3,059.7	1,598.32	-1,013.0	-300.5	588.5	0.00	0.00	0.00
3,400.0	29.05	196.52	3,147.1	1,510.89	-1,059.5	-314.3	615.5	0.00	0.00	0.00
3,500.0	29.05	196.52	3,234.5	1,423.47	-1,106.1	-328.1	642.6	0.00	0.00	0.00
3,600.0	29.05	196.52	3,321.9	1,336.05	-1,152.6	-341.9	669.6	0.00	0.00	0.00
3,700.0	29.05	196.52	3,409.4	1,248.63	-1,199.2	-355.7	696.7	0.00	0.00	0.00
3,800.0	29.05	196.52	3,496.8	1,161.21	-1,245.7	-369.5	723.7	0.00	0.00	0.00
3,900.0	29.05	196.52	3,584.2	1,073.79	-1,292.3	-383.3	750.8	0.00	0.00	0.00
PARKMAN										
3,903.2	29.05	196.52	3,587.0	1,071.00	-1,293.8	-383.7	751.6	0.00	0.00	0.00
4,000.0	29.05	196.52	3,671.6	986.37	-1,338.8	-397.1	777.8	0.00	0.00	0.00
4,100.0	29.05	196.52	3,759.1	898.94	-1,385.4	-410.9	804.8	0.00	0.00	0.00
4,200.0	29.05	196.52	3,846.5	811.52	-1,431.9	-424.7	831.9	0.00	0.00	0.00
4,300.0	29.05	196.52	3,933.9	724.10	-1,478.5	-438.5	858.9	0.00	0.00	0.00
4,400.0	29.05	196.52	4,021.3	636.68	-1,525.0	-452.3	886.0	0.00	0.00	0.00

Database:	EDM 5000.1 Single User Db	Local Co-ordinate Reference:	Well DT-FORBES C6-5-6
Company:	EXTRACTION OIL & GAS	TVD Reference:	KB-EST @ 4658.0usft
Project:	WELD COUNTY, COLORADO (NAD 83)	MD Reference:	KB-EST @ 4658.0usft
Site:	NW NE SEC. 5 T5N R65W 6th P.M.	North Reference:	True
Well:	DT-FORBES C6-5-6	Survey Calculation Method:	Minimum Curvature
Wellbore:	ORIGINAL WELLBORE		
Design:	PROPOSAL #3		

Planned Survey

MD (usft)	Inc (°)	Azi (°)	TVD (usft)	SS (usft)	+N/-S (usft)	+E/-W (usft)	Vertical Section (usft)	Dogleg Rate (°/100usft)	Build Rate (°/100usft)	Turn Rate (°/100usft)
4,500.0	29.05	196.52	4,108.7	549.26	-1,571.6	-466.1	913.0	0.00	0.00	0.00
4,600.0	29.05	196.52	4,196.2	461.84	-1,618.1	-479.9	940.1	0.00	0.00	0.00
4,700.0	29.05	196.52	4,283.6	374.41	-1,664.7	-493.7	967.1	0.00	0.00	0.00
SUSSEX										
4,708.5	29.05	196.52	4,291.0	367.00	-1,668.6	-494.9	969.4	0.00	0.00	0.00
4,800.0	29.05	196.52	4,371.0	286.99	-1,711.2	-507.5	994.1	0.00	0.00	0.00
4,900.0	29.05	196.52	4,458.4	199.57	-1,757.8	-521.4	1,021.2	0.00	0.00	0.00
5,000.0	29.05	196.52	4,545.9	112.15	-1,804.3	-535.2	1,048.2	0.00	0.00	0.00
5,100.0	29.05	196.52	4,633.3	24.73	-1,850.9	-549.0	1,075.3	0.00	0.00	0.00
5,200.0	29.05	196.52	4,720.7	-62.69	-1,897.4	-562.8	1,102.3	0.00	0.00	0.00
5,300.0	29.05	196.52	4,808.1	-150.12	-1,944.0	-576.6	1,129.4	0.00	0.00	0.00
SHANNON										
5,331.9	29.05	196.52	4,836.0	-178.00	-1,958.8	-581.0	1,138.0	0.00	0.00	0.00
5,400.0	29.05	196.52	4,895.5	-237.54	-1,990.5	-590.4	1,156.4	0.00	0.00	0.00
5,500.0	29.05	196.52	4,983.0	-324.96	-2,037.1	-604.2	1,183.4	0.00	0.00	0.00
5,600.0	29.05	196.52	5,070.4	-412.38	-2,083.6	-618.0	1,210.5	0.00	0.00	0.00
5,700.0	29.05	196.52	5,157.8	-499.80	-2,130.2	-631.8	1,237.5	0.00	0.00	0.00
5,800.0	29.05	196.52	5,245.2	-587.22	-2,176.7	-645.6	1,264.6	0.00	0.00	0.00
5,900.0	29.05	196.52	5,332.6	-674.64	-2,223.3	-659.4	1,291.6	0.00	0.00	0.00
6,000.0	29.05	196.52	5,420.1	-762.07	-2,269.8	-673.2	1,318.7	0.00	0.00	0.00
6,100.0	29.05	196.52	5,507.5	-849.49	-2,316.4	-687.0	1,345.7	0.00	0.00	0.00
6,200.0	29.05	196.52	5,594.9	-936.91	-2,362.9	-700.8	1,372.7	0.00	0.00	0.00
6,300.0	29.05	196.52	5,682.3	-1,024.33	-2,409.5	-714.6	1,399.8	0.00	0.00	0.00
6,400.0	29.05	196.52	5,769.8	-1,111.75	-2,456.0	-728.5	1,426.8	0.00	0.00	0.00
6,500.0	29.05	196.52	5,857.2	-1,199.17	-2,502.6	-742.3	1,453.9	0.00	0.00	0.00
6,600.0	29.05	196.52	5,944.6	-1,286.60	-2,549.1	-756.1	1,480.9	0.00	0.00	0.00
6,700.0	29.05	196.52	6,032.0	-1,374.02	-2,595.7	-769.9	1,508.0	0.00	0.00	0.00
6,800.0	29.05	196.52	6,119.4	-1,461.44	-2,642.2	-783.7	1,535.0	0.00	0.00	0.00
6,900.0	29.05	196.52	6,206.9	-1,548.86	-2,688.8	-797.5	1,562.0	0.00	0.00	0.00
7,000.0	29.05	196.52	6,294.3	-1,636.28	-2,735.3	-811.3	1,589.1	0.00	0.00	0.00
7,100.0	29.05	196.52	6,381.7	-1,723.70	-2,781.9	-825.1	1,616.1	0.00	0.00	0.00
7,200.0	29.05	196.52	6,469.1	-1,811.13	-2,828.4	-838.9	1,643.2	0.00	0.00	0.00
7,300.0	29.05	196.52	6,556.5	-1,898.55	-2,875.0	-852.7	1,670.2	0.00	0.00	0.00
KOP (10°/100ft DGLG'S)										
7,340.2	29.05	196.52	6,591.7	-1,933.66	-2,893.7	-858.3	1,681.1	0.00	0.00	0.00
7,400.0	30.74	208.06	6,643.6	-1,985.58	-2,921.1	-869.6	1,700.1	10.00	2.82	19.28
SHARON SPRINGS										
7,479.9	34.37	221.32	6,711.0	-2,053.00	-2,956.1	-894.1	1,733.9	10.00	4.55	16.60
7,500.0	35.49	224.24	6,727.5	-2,069.48	-2,964.6	-901.9	1,743.9	10.00	5.55	14.53
NIOBRARA										
7,516.7	36.47	226.54	6,741.0	-2,083.00	-2,971.5	-908.9	1,752.6	10.00	5.86	13.80
7,600.0	41.91	236.55	6,805.6	-2,147.60	-3,003.9	-950.2	1,801.6	10.00	6.54	12.01
7,700.0	49.34	245.94	6,875.6	-2,217.56	-3,037.8	-1,012.8	1,871.6	10.00	7.43	9.39
7,800.0	57.38	253.37	6,935.2	-2,277.24	-3,065.4	-1,088.0	1,951.6	10.00	8.04	7.43
7,900.0	65.78	259.55	6,982.8	-2,324.82	-3,085.8	-1,173.4	2,039.2	10.00	8.40	6.18
FORT HAYS										
7,963.2	71.21	263.03	7,006.0	-2,348.00	-3,094.7	-1,231.6	2,097.3	10.00	8.59	5.51
8,000.0	74.40	264.95	7,016.9	-2,358.86	-3,098.3	-1,266.5	2,131.7	10.00	8.67	5.22
CODELL										
8,063.7	79.96	268.15	7,031.0	-2,373.00	-3,102.1	-1,328.5	2,192.0	10.00	8.73	5.01
8,100.0	83.14	269.91	7,036.3	-2,378.33	-3,102.7	-1,364.3	2,226.4	10.00	8.76	4.87
LANDING PNT - DT-FORBES C6-5-6										
8,178.1	90.00	273.65	7,041.0	-2,383.00	-3,100.2	-1,442.2	2,300.0	10.00	8.79	4.78

Planning Report



Database:	EDM 5000.1 Single User Db	Local Co-ordinate Reference:	Well DT-FORBES C6-5-6
Company:	EXTRACTION OIL & GAS	TVD Reference:	KB-EST @ 4658.0usft
Project:	WELD COUNTY, COLORADO (NAD 83)	MD Reference:	KB-EST @ 4658.0usft
Site:	NW NE SEC. 5 T5N R65W 6th P.M.	North Reference:	True
Well:	DT-FORBES C6-5-6	Survey Calculation Method:	Minimum Curvature
Wellbore:	ORIGINAL WELLBORE		
Design:	PROPOSAL #3		

Planned Survey										
MD (usft)	Inc (°)	Azi (°)	TVD (usft)	SS (usft)	+N/-S (usft)	+E/-W (usft)	Vertical Section (usft)	Dogleg Rate (°/100usft)	Build Rate (°/100usft)	Turn Rate (°/100usft)
8,200.0	90.00	273.65	7,041.0	-2,383.00	-3,098.9	-1,464.1	2,320.5	0.00	0.00	0.00
8,300.0	90.00	273.65	7,041.0	-2,383.00	-3,092.5	-1,563.9	2,413.9	0.00	0.00	0.00
8,400.0	90.00	273.65	7,041.0	-2,383.00	-3,086.1	-1,663.7	2,507.2	0.00	0.00	0.00
8,500.0	90.00	273.65	7,041.0	-2,383.00	-3,079.8	-1,763.5	2,600.6	0.00	0.00	0.00
8,600.0	90.00	273.65	7,041.0	-2,383.00	-3,073.4	-1,863.3	2,694.0	0.00	0.00	0.00
8,700.0	90.00	273.65	7,041.0	-2,383.00	-3,067.1	-1,963.1	2,787.4	0.00	0.00	0.00
8,800.0	90.00	273.65	7,041.0	-2,383.00	-3,060.7	-2,062.9	2,880.7	0.00	0.00	0.00
8,900.0	90.00	273.65	7,041.0	-2,383.00	-3,054.3	-2,162.6	2,974.1	0.00	0.00	0.00
9,000.0	90.00	273.65	7,041.0	-2,383.00	-3,048.0	-2,262.4	3,067.5	0.00	0.00	0.00
9,100.0	90.00	273.65	7,041.0	-2,383.00	-3,041.6	-2,362.2	3,160.9	0.00	0.00	0.00
9,200.0	90.00	273.65	7,041.0	-2,383.00	-3,035.3	-2,462.0	3,254.2	0.00	0.00	0.00
9,300.0	90.00	273.65	7,041.0	-2,383.00	-3,028.9	-2,561.8	3,347.6	0.00	0.00	0.00
9,400.0	90.00	273.65	7,041.0	-2,383.00	-3,022.5	-2,661.6	3,441.0	0.00	0.00	0.00
9,500.0	90.00	273.65	7,041.0	-2,383.00	-3,016.2	-2,761.4	3,534.4	0.00	0.00	0.00
9,600.0	90.00	273.65	7,041.0	-2,383.00	-3,009.8	-2,861.2	3,627.8	0.00	0.00	0.00
9,700.0	90.00	273.65	7,041.0	-2,383.00	-3,003.5	-2,961.0	3,721.1	0.00	0.00	0.00
9,800.0	90.00	273.65	7,041.0	-2,383.00	-2,997.1	-3,060.8	3,814.5	0.00	0.00	0.00
9,900.0	90.00	273.65	7,041.0	-2,383.00	-2,990.7	-3,160.6	3,907.9	0.00	0.00	0.00
10,000.0	90.00	273.65	7,041.0	-2,383.00	-2,984.4	-3,260.4	4,001.3	0.00	0.00	0.00
10,100.0	90.00	273.65	7,041.0	-2,383.00	-2,978.0	-3,360.2	4,094.6	0.00	0.00	0.00
10,200.0	90.00	273.65	7,041.0	-2,383.00	-2,971.7	-3,460.0	4,188.0	0.00	0.00	0.00
10,300.0	90.00	273.65	7,041.0	-2,383.00	-2,965.3	-3,559.8	4,281.4	0.00	0.00	0.00
10,400.0	90.00	273.65	7,041.0	-2,383.00	-2,959.0	-3,659.6	4,374.8	0.00	0.00	0.00
10,500.0	90.00	273.65	7,041.0	-2,383.00	-2,952.6	-3,759.4	4,468.1	0.00	0.00	0.00
10,600.0	90.00	273.65	7,041.0	-2,383.00	-2,946.2	-3,859.2	4,561.5	0.00	0.00	0.00
10,700.0	90.00	273.65	7,041.0	-2,383.00	-2,939.9	-3,959.0	4,654.9	0.00	0.00	0.00
10,800.0	90.00	273.65	7,041.0	-2,383.00	-2,933.5	-4,058.8	4,748.3	0.00	0.00	0.00
10,900.0	90.00	273.65	7,041.0	-2,383.00	-2,927.2	-4,158.6	4,841.6	0.00	0.00	0.00
11,000.0	90.00	273.65	7,041.0	-2,383.00	-2,920.8	-4,258.4	4,935.0	0.00	0.00	0.00
11,100.0	90.00	273.65	7,041.0	-2,383.00	-2,914.4	-4,358.2	5,028.4	0.00	0.00	0.00
11,200.0	90.00	273.65	7,041.0	-2,383.00	-2,908.1	-4,458.0	5,121.8	0.00	0.00	0.00
11,300.0	90.00	273.65	7,041.0	-2,383.00	-2,901.7	-4,557.8	5,215.1	0.00	0.00	0.00
11,400.0	90.00	273.65	7,041.0	-2,383.00	-2,895.4	-4,657.6	5,308.5	0.00	0.00	0.00
11,500.0	90.00	273.65	7,041.0	-2,383.00	-2,889.0	-4,757.4	5,401.9	0.00	0.00	0.00
11,600.0	90.00	273.65	7,041.0	-2,383.00	-2,882.6	-4,857.2	5,495.3	0.00	0.00	0.00
11,700.0	90.00	273.65	7,041.0	-2,383.00	-2,876.3	-4,957.0	5,588.6	0.00	0.00	0.00
11,800.0	90.00	273.65	7,041.0	-2,383.00	-2,869.9	-5,056.8	5,682.0	0.00	0.00	0.00
11,900.0	90.00	273.65	7,041.0	-2,383.00	-2,863.6	-5,156.6	5,775.4	0.00	0.00	0.00
12,000.0	90.00	273.65	7,041.0	-2,383.00	-2,857.2	-5,256.4	5,868.8	0.00	0.00	0.00
12,100.0	90.00	273.65	7,041.0	-2,383.00	-2,850.9	-5,356.2	5,962.1	0.00	0.00	0.00
12,200.0	90.00	273.65	7,041.0	-2,383.00	-2,844.5	-5,456.0	6,055.5	0.00	0.00	0.00
12,300.0	90.00	273.65	7,041.0	-2,383.00	-2,838.1	-5,555.8	6,148.9	0.00	0.00	0.00
12,400.0	90.00	273.65	7,041.0	-2,383.00	-2,831.8	-5,655.6	6,242.3	0.00	0.00	0.00
12,500.0	90.00	273.65	7,041.0	-2,383.00	-2,825.4	-5,755.4	6,335.6	0.00	0.00	0.00
12,600.0	90.00	273.65	7,041.0	-2,383.00	-2,819.1	-5,855.2	6,429.0	0.00	0.00	0.00
12,700.0	90.00	273.65	7,041.0	-2,383.00	-2,812.7	-5,955.0	6,522.4	0.00	0.00	0.00
12,800.0	90.00	273.65	7,041.0	-2,383.00	-2,806.3	-6,054.8	6,615.8	0.00	0.00	0.00
12,900.0	90.00	273.65	7,041.0	-2,383.00	-2,800.0	-6,154.6	6,709.1	0.00	0.00	0.00
13,000.0	90.00	273.65	7,041.0	-2,383.00	-2,793.6	-6,254.4	6,802.5	0.00	0.00	0.00
13,100.0	90.00	273.65	7,041.0	-2,383.00	-2,787.3	-6,354.1	6,895.9	0.00	0.00	0.00
13,200.0	90.00	273.65	7,041.0	-2,383.00	-2,780.9	-6,453.9	6,989.3	0.00	0.00	0.00
13,300.0	90.00	273.65	7,041.0	-2,383.00	-2,774.5	-6,553.7	7,082.7	0.00	0.00	0.00
13,400.0	90.00	273.65	7,041.0	-2,383.00	-2,768.2	-6,653.5	7,176.0	0.00	0.00	0.00
13,500.0	90.00	273.65	7,041.0	-2,383.00	-2,761.8	-6,753.3	7,269.4	0.00	0.00	0.00

Planning Report



Database:	EDM 5000.1 Single User Db	Local Co-ordinate Reference:	Well DT-FORBES C6-5-6
Company:	EXTRACTION OIL & GAS	TVD Reference:	KB-EST @ 4658.0usft
Project:	WELD COUNTY, COLORADO (NAD 83)	MD Reference:	KB-EST @ 4658.0usft
Site:	NW NE SEC. 5 T5N R65W 6th P.M.	North Reference:	True
Well:	DT-FORBES C6-5-6	Survey Calculation Method:	Minimum Curvature
Wellbore:	ORIGINAL WELLBORE		
Design:	PROPOSAL #3		

Planned Survey										
MD (usft)	Inc (°)	Azi (°)	TVD (usft)	SS (usft)	+N/-S (usft)	+E/-W (usft)	Vertical Section (usft)	Dogleg Rate (°/100usft)	Build Rate (°/100usft)	Turn Rate (°/100usft)
13,600.0	90.00	273.65	7,041.0	-2,383.00	-2,755.5	-6,853.1	7,362.8	0.00	0.00	0.00
13,700.0	90.00	273.65	7,041.0	-2,383.00	-2,749.1	-6,952.9	7,456.2	0.00	0.00	0.00
13,800.0	90.00	273.65	7,041.0	-2,383.00	-2,742.7	-7,052.7	7,549.5	0.00	0.00	0.00
13,900.0	90.00	273.65	7,041.0	-2,383.00	-2,736.4	-7,152.5	7,642.9	0.00	0.00	0.00
14,000.0	90.00	273.65	7,041.0	-2,383.00	-2,730.0	-7,252.3	7,736.3	0.00	0.00	0.00
14,100.0	90.00	273.65	7,041.0	-2,383.00	-2,723.7	-7,352.1	7,829.7	0.00	0.00	0.00
14,200.0	90.00	273.65	7,041.0	-2,383.00	-2,717.3	-7,451.9	7,923.0	0.00	0.00	0.00
14,300.0	90.00	273.65	7,041.0	-2,383.00	-2,711.0	-7,551.7	8,016.4	0.00	0.00	0.00
14,400.0	90.00	273.65	7,041.0	-2,383.00	-2,704.6	-7,651.5	8,109.8	0.00	0.00	0.00
14,500.0	90.00	273.65	7,041.0	-2,383.00	-2,698.2	-7,751.3	8,203.2	0.00	0.00	0.00
14,600.0	90.00	273.65	7,041.0	-2,383.00	-2,691.9	-7,851.1	8,296.5	0.00	0.00	0.00
14,700.0	90.00	273.65	7,041.0	-2,383.00	-2,685.5	-7,950.9	8,389.9	0.00	0.00	0.00
14,800.0	90.00	273.65	7,041.0	-2,383.00	-2,679.2	-8,050.7	8,483.3	0.00	0.00	0.00
14,900.0	90.00	273.65	7,041.0	-2,383.00	-2,672.8	-8,150.5	8,576.7	0.00	0.00	0.00
15,000.0	90.00	273.65	7,041.0	-2,383.00	-2,666.4	-8,250.3	8,670.0	0.00	0.00	0.00
15,100.0	90.00	273.65	7,041.0	-2,383.00	-2,660.1	-8,350.1	8,763.4	0.00	0.00	0.00
15,200.0	90.00	273.65	7,041.0	-2,383.00	-2,653.7	-8,449.9	8,856.8	0.00	0.00	0.00
BHL - DT-FORBES C6-5-6										
15,247.2	90.00	273.65	7,041.0	-2,383.00	-2,650.7	-8,497.0	8,900.8	0.00	0.00	0.00

Formations						
MD (usft)	TVD (usft)	Name	Lithology	Dip (°)	Dip Direction (°)	
3,903.2	3,587.0	PARKMAN				
4,708.5	4,291.0	SUSSEX				
5,331.9	4,836.0	SHANNON				
7,479.9	6,711.0	SHARON SPRINGS				
7,516.7	6,741.0	NIOBRARA				
7,963.2	7,006.0	FORT HAYS				
8,063.7	7,031.0	CODELL				

Plan Annotations				
MD (usft)	TVD (usft)	Local Coordinates		Comment
		+N/-S (usft)	+E/-W (usft)	
400.0	400.0	0.0	0.0	START NUDGE (2°/100ft BUR)
1,529.0	1,500.0	-210.5	-62.4	9 5/8" SURFACE CASING
1,594.0	1,560.0	-234.5	-69.5	END OF TANGENT
1,917.5	1,851.1	-369.5	-109.6	EOB TO 29.05° INC
7,340.2	6,591.7	-2,893.7	-858.3	KOP (10°/100ft DGLG'S)
8,178.1	7,041.0	-3,100.2	-1,442.2	LANDING PNT - DT-FORBES C6-5-6
15,247.2	7,041.0	-2,650.7	-8,497.0	BHL - DT-FORBES C6-5-6