

Bayswater Exploration & Production, LLC

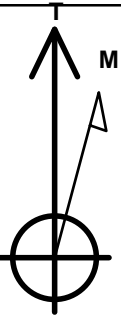
Well Name: **Carlson L-15-16HN**

Surface Location: Carlson 15-D Pad Sec.15-T5N-R65W
North American Datum 1983 , US State Plane 1983 , Colorado Northern Zone
Ground Elevation: 4621.0
+N/-S +E/-W Northing Easting Latitude Longitude Slot
0.0 0.0 1391065.16 3239112.21 40.403698 -104.641400
RKB - 22.5' WELL @ 4643.5ft (RKB - 22.5')

WELLBORE TARGET DETAILS

Name	TVD	+N/-S	+E/-W	Shape
SHL 1054'FNL, 399'FEL, SEC.15	1.0	0.0	0.0	Point
BHL 2560'FNL, 2337'FWL, SEC.16	6878.5	-1549.3	-7829.3	Point

Carlson 15-D Pad Sec.15-T5N-R65W
Carlson L-15-16HN
Plan #2 (6-18-15)
11:25, June 18 2015

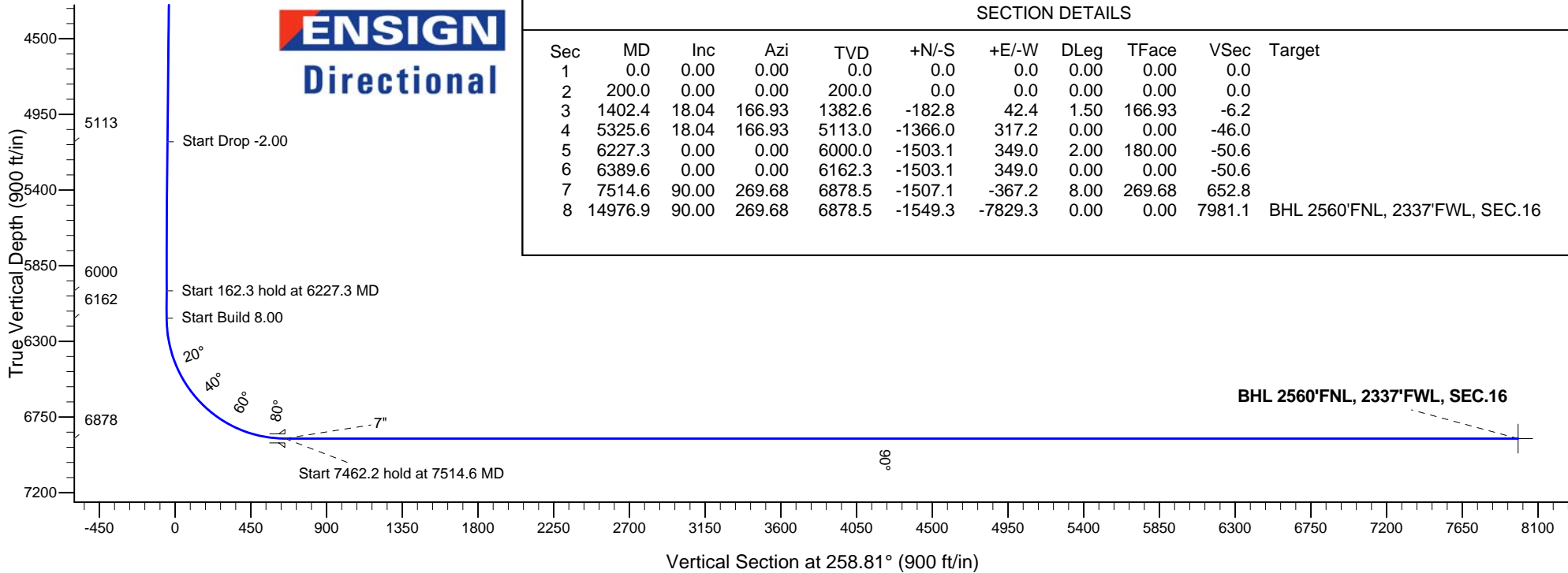
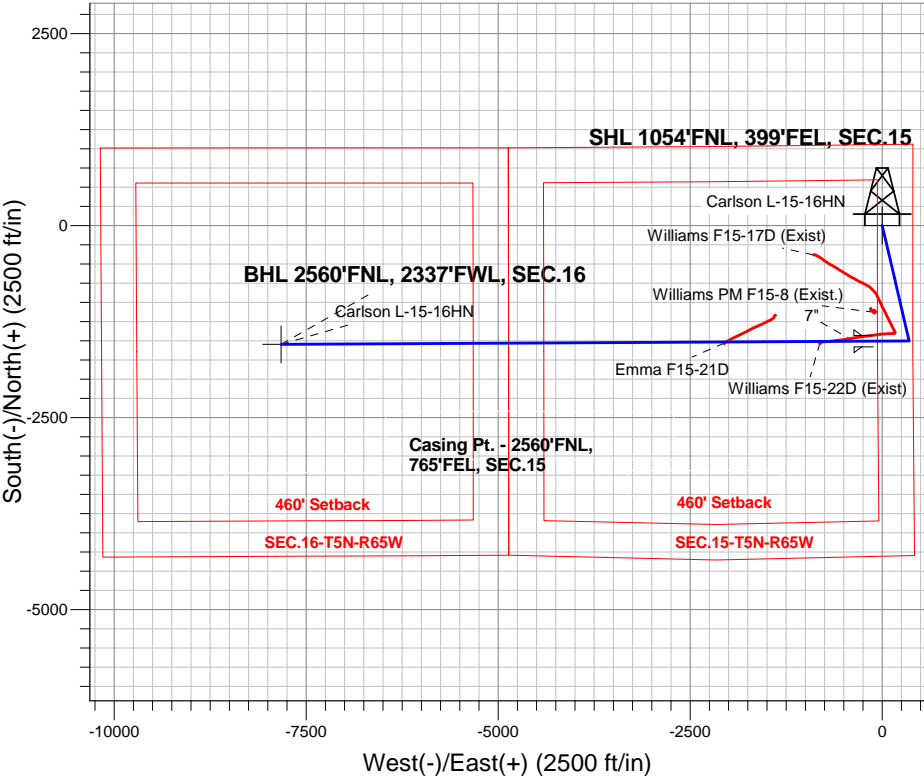


Azimuths to True North
Magnetic North: 8.26°

Magnetic Field
Strength: 52725.3nT
Dip Angle: 66.93°
Date: 6/18/2015
Model: IGRF2010

ANNOTATIONS

TVD	MD	Annotation
200.0	200.0	KOP - Start Build 1.50
5113.1	5325.6	Start Drop -2.00
6000.0	6227.3	Start 162.3 hold at 6227.3 MD
6162.3	6389.6	Start Build 8.00
6878.5	7514.6	Start 7462.2 hold at 7514.6 MD
6878.5	14976.9	TD at 14976.9





Bayswater Exploration & Production, LLC

SEC.15-T5N-R65W

Carlson 15-D Pad Sec.15-T5N-R65W

Carlson L-15-16HN

Wellbore #1

Plan: Plan #2 (6-18-15)

Standard Planning Report

18 June, 2015



BAYSWATER
EXPLORATION & PRODUCTION, LLC

Database:	EDMNEW	Local Co-ordinate Reference:	Well Carlson L-15-16HN
Company:	Bayswater Exploration & Production, LLC	TVD Reference:	WELL @ 4643.5ft (RKB - 22.5')
Project:	SEC.15-T5N-R65W	MD Reference:	WELL @ 4643.5ft (RKB - 22.5')
Site:	Carlson 15-D Pad Sec.15-T5N-R65W	North Reference:	True
Well:	Carlson L-15-16HN	Survey Calculation Method:	Minimum Curvature
Wellbore:	Wellbore #1		
Design:	Plan #2 (6-18-15)		

Project	SEC.15-T5N-R65W, Weld County, Colorado		
Map System:	US State Plane 1983	System Datum:	Mean Sea Level
Geo Datum:	North American Datum 1983		Using Well Reference Point
Map Zone:	Colorado Northern Zone		Using geodetic scale factor

Site		Carlson 15-D Pad Sec.15-T5N-R65W				
Site Position:		Northing:	1,391,065.32 ft	Latitude:	40.403694	
From:	Lat/Long	Easting:	3,239,277.09 ft	Longitude:	-104.640808	
Position Uncertainty:		0.0 ft	Slot Radius:	"	Grid Convergence:	0.56 °

Well	Carlson L-15-16HN					
Well Position	+N-S	1.4 ft	Northing:	1,391,065.16 ft	Latitude:	40.403698
	+E-W	-164.9 ft	Easting:	3,239,112.21 ft	Longitude:	-104.641400
Position Uncertainty		0.0 ft	Wellhead Elevation:	ft	Ground Level:	4,621.0 ft

Wellbore	Wellbore #1				
Magnetics	Model Name	Sample Date	Declination (°)	Dip Angle (°)	Field Strength (nT)
	IGRF2010	6/18/2015	8.26	66.93	52,725

Design	Plan #2 (6-18-15)			
Audit Notes:				
Version:	Phase:	PROTOTYPE	Tie On Depth:	0.0
Vertical Section:	Depth From (TVD) (ft)	+N/-S (ft)	+E/-W (ft)	Direction (°)
	0.0	0.0	0.0	258.81

Plan Sections										
Measured Depth (ft)	Inclination (°)	Azimuth (°)	Vertical Depth (ft)	+N/-S (ft)	+E/-W (ft)	Dogleg Rate (°/100ft)	Build Rate (°/100ft)	Turn Rate (°/100ft)	TFO (°)	Target
0.0	0.00	0.00	0.0	0.0	0.0	0.00	0.00	0.00	0.00	
200.0	0.00	0.00	200.0	0.0	0.0	0.00	0.00	0.00	0.00	
1,402.4	18.04	166.93	1,382.6	-182.8	42.4	1.50	1.50	0.00	166.93	
5,325.6	18.04	166.93	5,113.0	-1,366.0	317.2	0.00	0.00	0.00	0.00	
6,227.3	0.00	0.00	6,000.0	-1,503.1	349.0	2.00	-2.00	0.00	180.00	
6,389.6	0.00	0.00	6,162.3	-1,503.1	349.0	0.00	0.00	0.00	0.00	
7,514.6	90.00	269.68	6,878.5	-1,507.1	-367.2	8.00	8.00	0.00	269.68	
14,976.9	90.00	269.68	6,878.5	-1,549.3	-7,829.3	0.00	0.00	0.00	0.00	BHL 2560'FNL, 233

Database:	EDMNEW	Local Co-ordinate Reference:	Well Carlson L-15-16HN
Company:	Bayswater Exploration & Production, LLC	TVD Reference:	WELL @ 4643.5ft (RKB - 22.5')
Project:	SEC.15-T5N-R65W	MD Reference:	WELL @ 4643.5ft (RKB - 22.5')
Site:	Carlson 15-D Pad Sec.15-T5N-R65W	North Reference:	True
Well:	Carlson L-15-16HN	Survey Calculation Method:	Minimum Curvature
Wellbore:	Wellbore #1		
Design:	Plan #2 (6-18-15)		

Planned Survey									
Measured Depth (ft)	Inclination (°)	Azimuth (°)	Vertical Depth (ft)	+N/-S (ft)	+E/-W (ft)	Vertical Section (ft)	Dogleg Rate (°/100ft)	Build Rate (°/100ft)	Turn Rate (°/100ft)
0.0	0.00	0.00	0.0	0.0	0.0	0.0	0.00	0.00	0.00
100.0	0.00	0.00	100.0	0.0	0.0	0.0	0.00	0.00	0.00
200.0	0.00	0.00	200.0	0.0	0.0	0.0	0.00	0.00	0.00
KOP - Start Build 1.50									
300.0	1.50	166.93	300.0	-1.3	0.3	0.0	1.50	1.50	0.00
400.0	3.00	166.93	399.9	-5.1	1.2	-0.2	1.50	1.50	0.00
500.0	4.50	166.93	499.7	-11.5	2.7	-0.4	1.50	1.50	0.00
600.0	6.00	166.93	599.3	-20.4	4.7	-0.7	1.50	1.50	0.00
700.0	7.50	166.93	698.6	-31.8	7.4	-1.1	1.50	1.50	0.00
800.0	9.00	166.93	797.5	-45.8	10.6	-1.5	1.50	1.50	0.00
900.0	10.50	166.93	896.1	-62.3	14.5	-2.1	1.50	1.50	0.00
1,000.0	12.00	166.93	994.2	-81.3	18.9	-2.7	1.50	1.50	0.00
1,100.0	13.50	166.93	1,091.7	-102.8	23.9	-3.5	1.50	1.50	0.00
1,200.0	15.00	166.93	1,188.6	-126.8	29.4	-4.3	1.50	1.50	0.00
1,300.0	16.50	166.93	1,284.9	-153.2	35.6	-5.2	1.50	1.50	0.00
1,400.0	18.00	166.93	1,380.4	-182.1	42.3	-6.1	1.50	1.50	0.00
1,402.4	18.04	166.93	1,382.6	-182.8	42.4	-6.2	1.50	1.50	0.00
1,500.0	18.04	166.93	1,475.4	-212.3	49.3	-7.1	0.00	0.00	0.00
1,600.0	18.04	166.93	1,570.5	-242.4	56.3	-8.2	0.00	0.00	0.00
1,700.0	18.04	166.93	1,665.6	-272.6	63.3	-9.2	0.00	0.00	0.00
1,800.0	18.04	166.93	1,760.7	-302.7	70.3	-10.2	0.00	0.00	0.00
1,900.0	18.04	166.93	1,855.8	-332.9	77.3	-11.2	0.00	0.00	0.00
2,000.0	18.04	166.93	1,950.9	-363.1	84.3	-12.2	0.00	0.00	0.00
2,100.0	18.04	166.93	2,046.0	-393.2	91.3	-13.2	0.00	0.00	0.00
2,200.0	18.04	166.93	2,141.1	-423.4	98.3	-14.2	0.00	0.00	0.00
2,300.0	18.04	166.93	2,236.1	-453.5	105.3	-15.3	0.00	0.00	0.00
2,400.0	18.04	166.93	2,331.2	-483.7	112.3	-16.3	0.00	0.00	0.00
2,500.0	18.04	166.93	2,426.3	-513.8	119.3	-17.3	0.00	0.00	0.00
2,600.0	18.04	166.93	2,521.4	-544.0	126.3	-18.3	0.00	0.00	0.00
2,700.0	18.04	166.93	2,616.5	-574.2	133.3	-19.3	0.00	0.00	0.00
2,800.0	18.04	166.93	2,711.6	-604.3	140.3	-20.3	0.00	0.00	0.00
2,900.0	18.04	166.93	2,806.7	-634.5	147.3	-21.4	0.00	0.00	0.00
3,000.0	18.04	166.93	2,901.7	-664.6	154.3	-22.4	0.00	0.00	0.00
3,100.0	18.04	166.93	2,996.8	-694.8	161.3	-23.4	0.00	0.00	0.00
3,200.0	18.04	166.93	3,091.9	-725.0	168.3	-24.4	0.00	0.00	0.00
3,300.0	18.04	166.93	3,187.0	-755.1	175.3	-25.4	0.00	0.00	0.00
3,400.0	18.04	166.93	3,282.1	-785.3	182.3	-26.4	0.00	0.00	0.00
3,500.0	18.04	166.93	3,377.2	-815.4	189.3	-27.4	0.00	0.00	0.00
3,600.0	18.04	166.93	3,472.3	-845.6	196.3	-28.5	0.00	0.00	0.00
3,700.0	18.04	166.93	3,567.3	-875.7	203.3	-29.5	0.00	0.00	0.00
3,800.0	18.04	166.93	3,662.4	-905.9	210.3	-30.5	0.00	0.00	0.00
3,900.0	18.04	166.93	3,757.5	-936.1	217.3	-31.5	0.00	0.00	0.00
4,000.0	18.04	166.93	3,852.6	-966.2	224.3	-32.5	0.00	0.00	0.00
4,100.0	18.04	166.93	3,947.7	-996.4	231.3	-33.5	0.00	0.00	0.00
4,200.0	18.04	166.93	4,042.8	-1,026.5	238.3	-34.5	0.00	0.00	0.00
4,300.0	18.04	166.93	4,137.9	-1,056.7	245.4	-35.6	0.00	0.00	0.00
4,400.0	18.04	166.93	4,233.0	-1,086.9	252.4	-36.6	0.00	0.00	0.00
4,500.0	18.04	166.93	4,328.0	-1,117.0	259.4	-37.6	0.00	0.00	0.00
4,600.0	18.04	166.93	4,423.1	-1,147.2	266.4	-38.6	0.00	0.00	0.00
4,700.0	18.04	166.93	4,518.2	-1,177.3	273.4	-39.6	0.00	0.00	0.00
4,800.0	18.04	166.93	4,613.3	-1,207.5	280.4	-40.6	0.00	0.00	0.00
4,900.0	18.04	166.93	4,708.4	-1,237.6	287.4	-41.7	0.00	0.00	0.00
5,000.0	18.04	166.93	4,803.5	-1,267.8	294.4	-42.7	0.00	0.00	0.00
5,100.0	18.04	166.93	4,898.6	-1,298.0	301.4	-43.7	0.00	0.00	0.00

Database:	EDMNEW	Local Co-ordinate Reference:	Well Carlson L-15-16HN
Company:	Bayswater Exploration & Production, LLC	TVD Reference:	WELL @ 4643.5ft (RKB - 22.5')
Project:	SEC.15-T5N-R65W	MD Reference:	WELL @ 4643.5ft (RKB - 22.5')
Site:	Carlson 15-D Pad Sec.15-T5N-R65W	North Reference:	True
Well:	Carlson L-15-16HN	Survey Calculation Method:	Minimum Curvature
Wellbore:	Wellbore #1		
Design:	Plan #2 (6-18-15)		

Planned Survey									
Measured Depth (ft)	Inclination (°)	Azimuth (°)	Vertical Depth (ft)	+N/-S (ft)	+E/-W (ft)	Vertical Section (ft)	Dogleg Rate (°/100ft)	Build Rate (°/100ft)	Turn Rate (°/100ft)
5,200.0	18.04	166.93	4,993.6	-1,328.1	308.4	-44.7	0.00	0.00	0.00
5,300.0	18.04	166.93	5,088.7	-1,358.3	315.4	-45.7	0.00	0.00	0.00
5,325.6	18.04	166.93	5,113.1	-1,366.0	317.2	-46.0	0.00	0.00	0.00
Start Drop -2.00									
5,400.0	16.55	166.93	5,184.1	-1,387.5	322.2	-46.7	2.00	-2.00	0.00
5,500.0	14.55	166.93	5,280.4	-1,413.6	328.2	-47.6	2.00	-2.00	0.00
5,600.0	12.55	166.93	5,377.7	-1,436.5	333.5	-48.3	2.00	-2.00	0.00
5,700.0	10.55	166.93	5,475.6	-1,456.0	338.1	-49.0	2.00	-2.00	0.00
5,800.0	8.55	166.93	5,574.2	-1,472.1	341.8	-49.5	2.00	-2.00	0.00
5,900.0	6.55	166.93	5,673.4	-1,484.9	344.8	-50.0	2.00	-2.00	0.00
6,000.0	4.55	166.93	5,772.9	-1,494.3	347.0	-50.3	2.00	-2.00	0.00
6,100.0	2.55	166.93	5,872.7	-1,500.3	348.4	-50.5	2.00	-2.00	0.00
6,200.0	0.55	166.93	5,972.7	-1,503.0	349.0	-50.6	2.00	-2.00	0.00
6,227.3	0.00	166.93	6,000.0	-1,503.1	349.0	-50.6	2.00	-2.00	0.00
Start 162.3 hold at 6227.3 MD									
6,300.0	0.00	0.00	6,072.7	-1,503.1	349.0	-50.6	0.00	0.00	0.00
6,389.6	0.00	0.00	6,162.3	-1,503.1	349.0	-50.6	0.00	0.00	0.00
Start Build 8.00									
6,400.0	0.83	269.68	6,172.7	-1,503.1	348.9	-50.5	7.97	7.97	0.00
6,500.0	8.83	269.68	6,272.2	-1,503.1	340.5	-42.3	8.00	8.00	0.00
6,600.0	16.83	269.68	6,369.6	-1,503.3	318.3	-20.5	8.00	8.00	0.00
6,700.0	24.83	269.68	6,463.0	-1,503.5	282.8	14.4	8.00	8.00	0.00
6,800.0	32.83	269.68	6,550.6	-1,503.7	234.6	61.7	8.00	8.00	0.00
6,900.0	40.83	269.68	6,630.5	-1,504.1	174.7	120.6	8.00	8.00	0.00
7,000.0	48.83	269.68	6,701.4	-1,504.5	104.3	189.7	8.00	8.00	0.00
7,100.0	56.83	269.68	6,761.8	-1,504.9	24.7	267.9	8.00	8.00	0.00
7,200.0	64.83	269.68	6,810.5	-1,505.4	-62.6	353.6	8.00	8.00	0.00
7,300.0	72.83	269.68	6,846.6	-1,505.9	-155.7	445.1	8.00	8.00	0.00
7,400.0	80.83	269.68	6,869.3	-1,506.5	-253.0	540.7	8.00	8.00	0.00
7,500.0	88.83	269.68	6,878.4	-1,507.1	-352.5	638.4	8.00	8.00	0.00
7,514.6	90.00	269.68	6,878.5	-1,507.1	-367.1	652.7	8.00	8.00	0.00
Start 7462.2 hold at 7514.6 MD - 7"									
7,600.0	90.00	269.68	6,878.5	-1,507.6	-452.5	736.6	0.00	0.00	0.00
7,700.0	90.00	269.68	6,878.5	-1,508.2	-552.5	834.8	0.00	0.00	0.00
7,800.0	90.00	269.68	6,878.5	-1,508.8	-652.5	933.0	0.00	0.00	0.00
7,900.0	90.00	269.68	6,878.5	-1,509.3	-752.5	1,031.2	0.00	0.00	0.00
8,000.0	90.00	269.68	6,878.5	-1,509.9	-852.5	1,129.4	0.00	0.00	0.00
8,100.0	90.00	269.68	6,878.5	-1,510.4	-952.5	1,227.6	0.00	0.00	0.00
8,200.0	90.00	269.68	6,878.5	-1,511.0	-1,052.5	1,325.8	0.00	0.00	0.00
8,300.0	90.00	269.68	6,878.5	-1,511.6	-1,152.5	1,424.0	0.00	0.00	0.00
8,400.0	90.00	269.68	6,878.5	-1,512.1	-1,252.5	1,522.2	0.00	0.00	0.00
8,500.0	90.00	269.68	6,878.5	-1,512.7	-1,352.5	1,620.4	0.00	0.00	0.00
8,600.0	90.00	269.68	6,878.5	-1,513.3	-1,452.5	1,718.6	0.00	0.00	0.00
8,700.0	90.00	269.68	6,878.5	-1,513.8	-1,552.5	1,816.8	0.00	0.00	0.00
8,800.0	90.00	269.68	6,878.5	-1,514.4	-1,652.5	1,915.1	0.00	0.00	0.00
8,900.0	90.00	269.68	6,878.5	-1,515.0	-1,752.5	2,013.3	0.00	0.00	0.00
9,000.0	90.00	269.68	6,878.5	-1,515.5	-1,852.5	2,111.5	0.00	0.00	0.00
9,100.0	90.00	269.68	6,878.5	-1,516.1	-1,952.5	2,209.7	0.00	0.00	0.00
9,200.0	90.00	269.68	6,878.5	-1,516.7	-2,052.5	2,307.9	0.00	0.00	0.00
9,300.0	90.00	269.68	6,878.5	-1,517.2	-2,152.5	2,406.1	0.00	0.00	0.00
9,400.0	90.00	269.68	6,878.5	-1,517.8	-2,252.5	2,504.3	0.00	0.00	0.00
9,500.0	90.00	269.68	6,878.5	-1,518.3	-2,352.5	2,602.5	0.00	0.00	0.00
9,600.0	90.00	269.68	6,878.5	-1,518.9	-2,452.5	2,700.7	0.00	0.00	0.00

Database:	EDMNEW	Local Co-ordinate Reference:	Well Carlson L-15-16HN
Company:	Bayswater Exploration & Production, LLC	TVD Reference:	WELL @ 4643.5ft (RKB - 22.5')
Project:	SEC.15-T5N-R65W	MD Reference:	WELL @ 4643.5ft (RKB - 22.5')
Site:	Carlson 15-D Pad Sec.15-T5N-R65W	North Reference:	True
Well:	Carlson L-15-16HN	Survey Calculation Method:	Minimum Curvature
Wellbore:	Wellbore #1		
Design:	Plan #2 (6-18-15)		

Planned Survey									
Measured Depth (ft)	Inclination (°)	Azimuth (°)	Vertical Depth (ft)	+N/-S (ft)	+E/-W (ft)	Vertical Section (ft)	Dogleg Rate (°/100ft)	Build Rate (°/100ft)	Turn Rate (°/100ft)
9,700.0	90.00	269.68	6,878.5	-1,519.5	-2,552.5	2,798.9	0.00	0.00	0.00
9,800.0	90.00	269.68	6,878.5	-1,520.0	-2,652.5	2,897.1	0.00	0.00	0.00
9,900.0	90.00	269.68	6,878.5	-1,520.6	-2,752.5	2,995.3	0.00	0.00	0.00
10,000.0	90.00	269.68	6,878.5	-1,521.2	-2,852.5	3,093.5	0.00	0.00	0.00
10,100.0	90.00	269.68	6,878.5	-1,521.7	-2,952.5	3,191.7	0.00	0.00	0.00
10,200.0	90.00	269.68	6,878.5	-1,522.3	-3,052.5	3,289.9	0.00	0.00	0.00
10,300.0	90.00	269.68	6,878.5	-1,522.9	-3,152.5	3,388.1	0.00	0.00	0.00
10,400.0	90.00	269.68	6,878.5	-1,523.4	-3,252.5	3,486.3	0.00	0.00	0.00
10,500.0	90.00	269.68	6,878.5	-1,524.0	-3,352.5	3,584.6	0.00	0.00	0.00
10,600.0	90.00	269.68	6,878.5	-1,524.6	-3,452.5	3,682.8	0.00	0.00	0.00
10,700.0	90.00	269.68	6,878.5	-1,525.1	-3,552.5	3,781.0	0.00	0.00	0.00
10,800.0	90.00	269.68	6,878.5	-1,525.7	-3,652.5	3,879.2	0.00	0.00	0.00
10,900.0	90.00	269.68	6,878.5	-1,526.2	-3,752.5	3,977.4	0.00	0.00	0.00
11,000.0	90.00	269.68	6,878.5	-1,526.8	-3,852.5	4,075.6	0.00	0.00	0.00
11,100.0	90.00	269.68	6,878.5	-1,527.4	-3,952.5	4,173.8	0.00	0.00	0.00
11,200.0	90.00	269.68	6,878.5	-1,527.9	-4,052.5	4,272.0	0.00	0.00	0.00
11,300.0	90.00	269.68	6,878.5	-1,528.5	-4,152.5	4,370.2	0.00	0.00	0.00
11,400.0	90.00	269.68	6,878.5	-1,529.1	-4,252.5	4,468.4	0.00	0.00	0.00
11,500.0	90.00	269.68	6,878.5	-1,529.6	-4,352.5	4,566.6	0.00	0.00	0.00
11,600.0	90.00	269.68	6,878.5	-1,530.2	-4,452.5	4,664.8	0.00	0.00	0.00
11,700.0	90.00	269.68	6,878.5	-1,530.8	-4,552.5	4,763.0	0.00	0.00	0.00
11,800.0	90.00	269.68	6,878.5	-1,531.3	-4,652.5	4,861.2	0.00	0.00	0.00
11,900.0	90.00	269.68	6,878.5	-1,531.9	-4,752.5	4,959.4	0.00	0.00	0.00
12,000.0	90.00	269.68	6,878.5	-1,532.5	-4,852.5	5,057.6	0.00	0.00	0.00
12,100.0	90.00	269.68	6,878.5	-1,533.0	-4,952.5	5,155.8	0.00	0.00	0.00
12,200.0	90.00	269.68	6,878.5	-1,533.6	-5,052.5	5,254.1	0.00	0.00	0.00
12,300.0	90.00	269.68	6,878.5	-1,534.1	-5,152.5	5,352.3	0.00	0.00	0.00
12,400.0	90.00	269.68	6,878.5	-1,534.7	-5,252.5	5,450.5	0.00	0.00	0.00
12,500.0	90.00	269.68	6,878.5	-1,535.3	-5,352.5	5,548.7	0.00	0.00	0.00
12,600.0	90.00	269.68	6,878.5	-1,535.8	-5,452.5	5,646.9	0.00	0.00	0.00
12,700.0	90.00	269.68	6,878.5	-1,536.4	-5,552.5	5,745.1	0.00	0.00	0.00
12,800.0	90.00	269.68	6,878.5	-1,537.0	-5,652.5	5,843.3	0.00	0.00	0.00
12,900.0	90.00	269.68	6,878.5	-1,537.5	-5,752.5	5,941.5	0.00	0.00	0.00
13,000.0	90.00	269.68	6,878.5	-1,538.1	-5,852.5	6,039.7	0.00	0.00	0.00
13,100.0	90.00	269.68	6,878.5	-1,538.7	-5,952.5	6,137.9	0.00	0.00	0.00
13,200.0	90.00	269.68	6,878.5	-1,539.2	-6,052.5	6,236.1	0.00	0.00	0.00
13,300.0	90.00	269.68	6,878.5	-1,539.8	-6,152.5	6,334.3	0.00	0.00	0.00
13,400.0	90.00	269.68	6,878.5	-1,540.4	-6,252.4	6,432.5	0.00	0.00	0.00
13,500.0	90.00	269.68	6,878.5	-1,540.9	-6,352.4	6,530.7	0.00	0.00	0.00
13,600.0	90.00	269.68	6,878.5	-1,541.5	-6,452.4	6,628.9	0.00	0.00	0.00
13,700.0	90.00	269.68	6,878.5	-1,542.0	-6,552.4	6,727.1	0.00	0.00	0.00
13,800.0	90.00	269.68	6,878.5	-1,542.6	-6,652.4	6,825.3	0.00	0.00	0.00
13,900.0	90.00	269.68	6,878.5	-1,543.2	-6,752.4	6,923.6	0.00	0.00	0.00
14,000.0	90.00	269.68	6,878.5	-1,543.7	-6,852.4	7,021.8	0.00	0.00	0.00
14,100.0	90.00	269.68	6,878.5	-1,544.3	-6,952.4	7,120.0	0.00	0.00	0.00
14,200.0	90.00	269.68	6,878.5	-1,544.9	-7,052.4	7,218.2	0.00	0.00	0.00
14,300.0	90.00	269.68	6,878.5	-1,545.4	-7,152.4	7,316.4	0.00	0.00	0.00
14,400.0	90.00	269.68	6,878.5	-1,546.0	-7,252.4	7,414.6	0.00	0.00	0.00
14,500.0	90.00	269.68	6,878.5	-1,546.6	-7,352.4	7,512.8	0.00	0.00	0.00
14,600.0	90.00	269.68	6,878.5	-1,547.1	-7,452.4	7,611.0	0.00	0.00	0.00
14,700.0	90.00	269.68	6,878.5	-1,547.7	-7,552.4	7,709.2	0.00	0.00	0.00
14,800.0	90.00	269.68	6,878.5	-1,548.3	-7,652.4	7,807.4	0.00	0.00	0.00
14,900.0	90.00	269.68	6,878.5	-1,548.8	-7,752.4	7,905.6	0.00	0.00	0.00
14,976.9	90.00	269.68	6,878.5	-1,549.3	-7,829.3	7,981.1	0.00	0.00	0.00

Database:	EDMNEW	Local Co-ordinate Reference:	Well Carlson L-15-16HN
Company:	Bayswater Exploration & Production, LLC	TVD Reference:	WELL @ 4643.5ft (RKB - 22.5')
Project:	SEC.15-T5N-R65W	MD Reference:	WELL @ 4643.5ft (RKB - 22.5')
Site:	Carlson 15-D Pad Sec.15-T5N-R65W	North Reference:	True
Well:	Carlson L-15-16HN	Survey Calculation Method:	Minimum Curvature
Wellbore:	Wellbore #1		
Design:	Plan #2 (6-18-15)		

Planned Survey									
Measured Depth (ft)	Inclination (°)	Azimuth (°)	Vertical Depth (ft)	+N/-S (ft)	+E/-W (ft)	Vertical Section (ft)	Dogleg Rate (°/100ft)	Build Rate (°/100ft)	Turn Rate (°/100ft)

Targets									
Target Name	Dip Angle (°)	Dip Dir. (°)	TVD (ft)	+N/-S (ft)	+E/-W (ft)	Northing (ft)	Easting (ft)	Latitude	Longitude
- hit/miss target									
- Shape									
SHL 1054'FNL, 399'FI - plan hits target center - Point	0.00	0.00	1.0	0.0	0.0	1,391,065.18	3,239,112.21	40.403698	-104.641400
BHL 2560'FNL, 2337'FI - plan hits target center - Point	0.00	0.00	6,878.5	-1,549.3	-7,829.3	1,389,440.24	3,231,298.59	40.399442	-104.669510

Casing Points					
Measured Depth (ft)	Vertical Depth (ft)	Name	Casing Diameter (")	Hole Diameter (")	
7,514.6	6,878.5	7"	7	7-1/2	

Plan Annotations				
Measured Depth (ft)	Vertical Depth (ft)	Local Coordinates +N/-S (ft)	+E/-W (ft)	Comment
200.0	200.0	0.0	0.0	KOP - Start Build 1.50
5,325.6	5,113.1	-1,366.0	317.2	Start Drop -2.00
6,227.3	6,000.0	-1,503.1	349.0	Start 162.3 hold at 6227.3 MD
6,389.6	6,162.3	-1,503.1	349.0	Start Build 8.00
7,514.6	6,878.5	-1,507.1	-367.1	Start 7462.2 hold at 7514.6 MD
14,976.9	6,878.5	-1,549.3	-7,829.3	TD at 14976.9