



Well Name: RGU 532-26-198
Surface Location: RGU 42-26-198
North American Datum 1983 , US State Plane 1983 , Colorado Central Zone
Ground Elevation: 6622.00

+N/-S
0.00

+E/-W
0.00

Northing
1778090.90

Easting
2199594.60

Latitude
39.935150

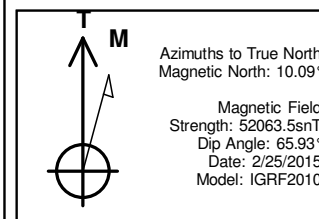
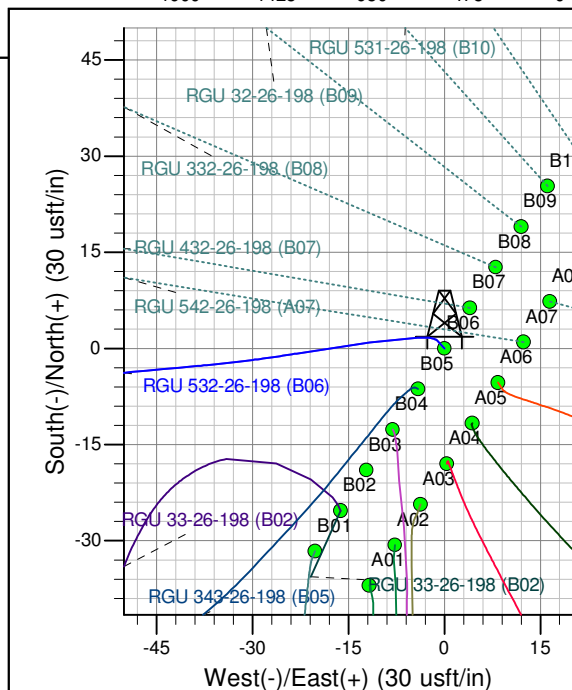
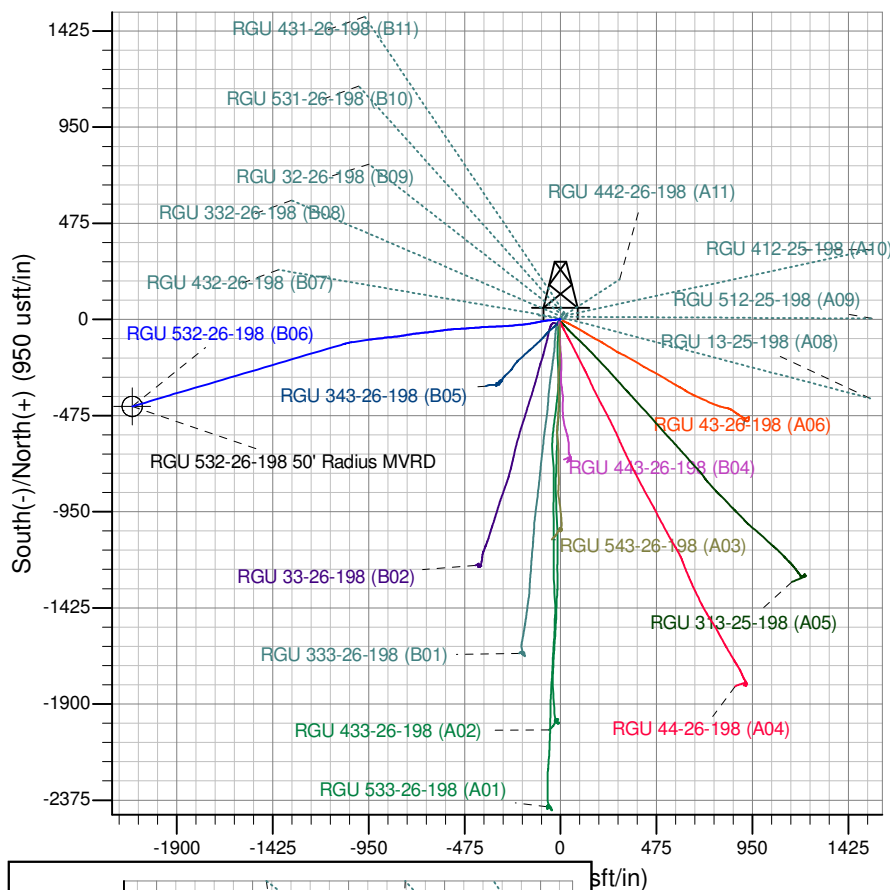
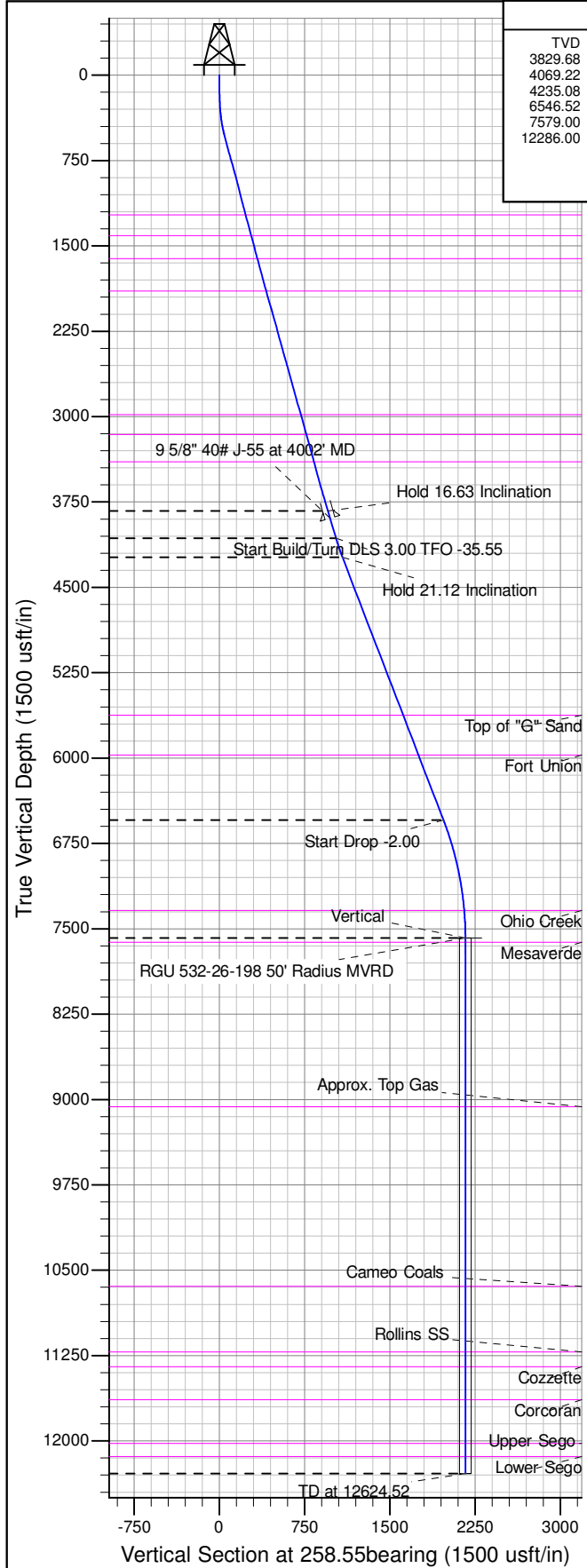
Longitude
-108.354579

Slot
B06

KB @ 6646.00usft (H&P 318)

ANNOTATIONS

TVD	MD	Inc	Azi	+N/-S	+E/-W	Vsect	Departure	Annotation
3829.68	3958.01	16.63	262.11	-101.07	-953.33	954.42	0.00	Hold 16.63 Inclination
4069.22	4208.01	16.63	262.11	-110.90	-1024.20	1025.83	71.55	Start Build/Turn DLS 3.00 TFO -35.55
4235.08	4383.31	21.12	253.61	-123.26	-1079.39	1082.38	128.25	Hold 21.12 Inclination
6546.52	6861.27	21.12	253.61	-375.31	-1936.15	1972.12	1021.32	Start Drop -2.00
7579.00	7917.52	0.00	0.00	-429.64	-2120.85	2163.93	1213.84	Vertical
12286.00	12624.52	0.00	0.00	-429.64	-2120.85	2163.93	1213.84	TD at 12624.52



Project: RG 26-01S-098W
Site: RGU 42-26-198
Well: RGU 532-26-198
Design #3 5May15 sam