



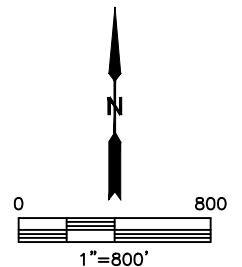
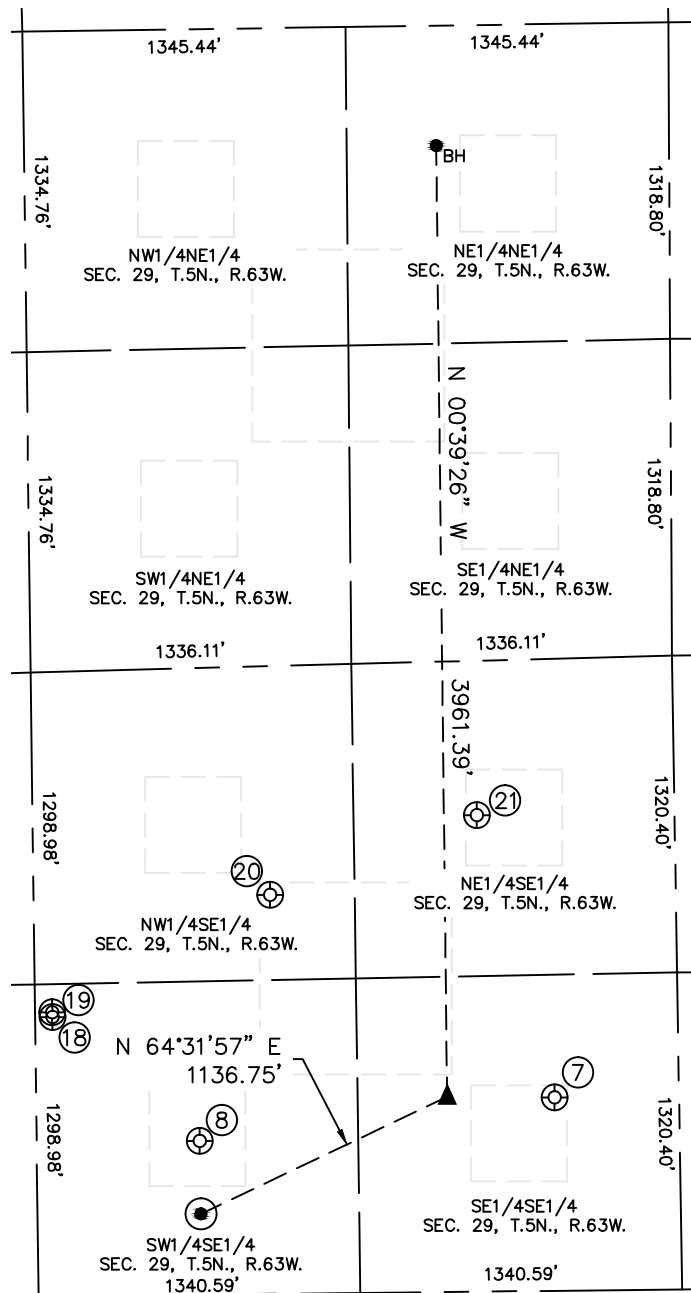


Lat40°, Inc. 6250 W. 10th Street, Unit 2, Greeley, CO 970-515-5294

SITE SKETCH

TRIMAR FARMS 29T-221

SECTION: 29
TOWNSHIP: 5N
RANGE: 63W



WELL NO.	WELL NAME	SHL FOOTAGE				SHL LAT°	SHL LONG°	PDOP	ELEV (FT.)	1/4/1/4
7	MORGANTE 44-29U	805	FSL	518	FEL	40.36548	-104.45233	1.8	4558	SESE
8	SIEBRING 34-29U	640	FSL	2000	FEL	40.36503	-104.45764	2.8	4572	SWSE
18	SIEBRING 29PU	1161	FSL	2605	FEL	40.36646	-104.45982	1.6	4571	SWSE
19	SIEBRING 33-29DU	1182	FSL	2605	FEL	40.36652	-104.45982	3.3	4571	SWSE
20	WEST HARDIN 1	1661	FSL	1690	FEL	40.36783	-104.45654	1.7	4560	NWSE
21	VIEFHAUS 43-29U	1984	FSL	823	FEL	40.36871	-104.45344	1.7	4553	NESE

DATE: 3/30/2015
PROJECT#: 2014131