



FILE NO: CH093852	COMPANY WELL FIELD COUNTY	WPX ENERGY WPX GM 433-28 GRAND VALLEY GARFIELD	STATE COLORADO
API NO: 05045225080000			

Version 28 GS 96W GM 323-28 PAD H&P 318	LOCATION: SHL: 1503' FSL & 2346' FWL BHL: 1931' FSL & 1615' FEL (NWSE) SEC 28 TWP 6S RGE 96W	OTHER SERVICES BOND LOG
--	---	----------------------------

PERMANENT DATUM LOG MEASURED FROM DRILL. MEAS. FROM	GL KB KB GL	ELEVATION 24 FT 5476 FT ABOVE P.D.	ELEVATIONS: KB 5500 FT DF GL 5476 FT
---	----------------------	---	---

DATE	2-Jan-2015
RUN	1
SERVICE ORDER	US093852
DEPTH DRILLER	7026 FT
DEPTH LOGGER	6935 FT
BOTTOM LOGGED INTERVAL	6925 FT
TOP LOGGED INTERVAL	3649 FT
TIME STARTED	1130
TIME FINISHED	1630
OPERATOR RIG TIME	5 HOURS
TYPE OF FLUID IN HOLE	WATER
FLUID DENSITY	NA
FLUID SALINITY	NA
FLUID LEVEL	58 FT
LOGGED CEMENT TOP	NA
WELLHEAD PRESSURE	0 PSI
MAXIMUM HOLE DEVIATION	NA
NOMINAL LOGGING SPEED	10 FMIN
MAX. RECORDED TEMP.	230 DEGF
REFERENCE LOG	BAKER HUGHES OH LOG
REFERENCE LOG DATE	21-Dec-2014
EQUIP. NO.	4271
LOCATION	GRAND JCT.
RECORDED BY	FLOYD RENEAU
WITNESSED BY	JEFF BRADY

IN MAKING INTERPRETATIONS OF LOGS OUR EMPLOYEES WILL GIVE THE CUSTOMER THE BENEFIT OF THEIR BEST JUDGEMENT. BUT SINCE ALL INTERPRETATIONS ARE OPINIONS BASED ON INFERENCES FROM ELECTRICAL OR OTHER MEASUREMENTS, WE CANNOT, AND WE DO NOT GUARANTEE THE ACCURACY OR CORRECTNESS OF ANY INTERPRETATION. WE SHALL NOT BE LIABLE OR RESPONSIBLE FOR ANY LOSS, COST, DAMAGES, OR EXPENSES WHATSOEVER INCURRED OR SUSTAINED BY THE CUSTOMER RESULTING FROM ANY INTERPRETATION MADE BY ANY OF OUR EMPLOYEES.

BOREHOLE RECORD		
BIT SIZE	FROM	TO
13.5 IN	24 FT	1484 FT
8.75 IN	1470 FT	7026 FT

CASING RECORD				
SIZE	WEIGHT	GRADE	FROM	TO
9.625 IN			24 FT	1484 FT
4.5 IN	11.6 LB/F	I-80	24 FT	7026 FT

REMARKS

RUN 1 TRIP 1: All data on this log is shifted and depth matched using the Gamma Ray curve to the Baker Hughes HDIL/ZDL/CN/GR open hole log dated 12/21/2014 at the clients request.
The amount of linear shift is -2 feet.
The depth matching process creates potential for collar lengths to vary from those recorded on other cased hole wireline units without a Gamma Ray reference.

Logged in PNC-3D mode.

BHT = 230 degF

SJ = 3470'- 3499'

Thanks you for choosing Baker-Hughes.

EQUIPMENT DATA

RUN	TRIP	TOOL	SERIES NO.	SERIAL NO.	POSITION
1	1	PCM	8250EA	10397894	FREE
1	1	TEL/CCL	8248ED	10387150	FREE
1	1	GR	2812LA	10274382	FREE
1	1	RPM	8281EA	10423671	FREE
1	1	RPM	8283PA	10585555	FREE
1	1	RPM	8281FA	10460082	FREE
1	1	TEMP	8255XA	Z120516	FREE

MAIN SECTION PNC-3D MODE

ECLIPS 6.2wu1 PC-ECLIPS General Release Rel 6.2w Update 1 Fri Apr 25 10:54:53 Central Daylight Time 2014
Updates: 46 Patches: 5

Plotted: Sat Jan 03 09:06:47 2015

PARAMETER AND FILTER SUMMARY REPORT

FILE: C:\dat1a\093852\354h02.prm
LOGGING MODE: DEPTH DIRECTION: UP
TOP DEPTH: 3628.250 ft BOTTOM DEPTH: 6939.000 ft

SYMMETRIC FILTER

MEASUREMENT TYPE	PARAMETER	VALUE	UNITS	INTERVAL (ft)
GR	FILTER ()	medium (1)		TOP BOTTOM

RPM PROCESSING

MEASUREMENT TYPE	PARAMETER	VALUE	UNITS	INTERVAL (ft)
PNC Parameters	BOREHOLE CONTENTS	FLUID		TOP BOTTOM
	OPEN/CASED HOLE	CASED HOLE		" "
	BOREHOLE SIZE	8.75	in	" "
	CASING SIZE	4.50	in	" "
	MATRIX	SANDSTONE		" "
	CORRECTION BUFFER	11		" "

CURVE DESCRIPTION REPORT

CURVE NAME	CREATION DATE	CURVE DESCRIPTION
F1:CCL	Jan 2 16:04:27 2015	CASING COLLAR LOCATOR
F1:GR	Jan 2 16:04:28 2015	GAMMA RAY
F1:ISS	Jan 2 16:04:28 2015	INELASTIC SHORT SPACE COUNT RATE
F1:LS	Jan 2 16:04:28 2015	LONG SPACE COUNT RATE
F1:RATO	Jan 2 16:04:28 2015	SHORT/LONG SPACE COUNT RATE RATIO
F1:RICS	Jan 2 16:04:28 2015	SHORT SPACE INELASTIC TO CAPTURE COUNT RATE RATIO (ISS/CSS)
F1:SGFC	Jan 2 16:04:28 2015	CORRECTED FORMATION SIGMA
F1:SS	Jan 2 16:04:28 2015	SHORT SPACE COUNT RATE

CURVE MEASURE POINT OFFSET

CURVE	OFFSET (ft)	CURVE	OFFSET (ft)	CURVE	OFFSET (ft)	CURVE	OFFSET (ft)
CCL	25.00	ISS	12.75	RATO	12.75	SGFC	12.75
GR	22.75	LS	12.75	RICS	12.75	SS	12.75

Presentation : BHUGHES-06627:C:\dat1a\093852\433_RPM_MAIN.fvpdf [5"/100' Scale]
Plot Interval : 3630 - 6940 Feet

Data File 1 : F1 : BHUGHES-06627:C:\dat1a\093852\433_RPM_MAIN.vtf

Data File 1 : FT : BHUGHES-00027.C\data\095652455_RFM_MAIN.xtl
Created On : Jan 2 16:04:27 2015
Company : WPX ENERGY
Well : WPX GM 433-28
Field : GRAND VALLEY
File Interval : 14.75 - 6939 Feet
OCT : n354h

GR BACKUP

FEET

ISS [iss]

0 1E+006

(1)

GAMMA RAY [gr]

0 150

(gAPI)

CCL
(mV)

3700

LS [ls]

0 29000

(1)

SS [ss]

0 290000

(1)

RATO [rato]

17 0

(1)

RICS [rics]

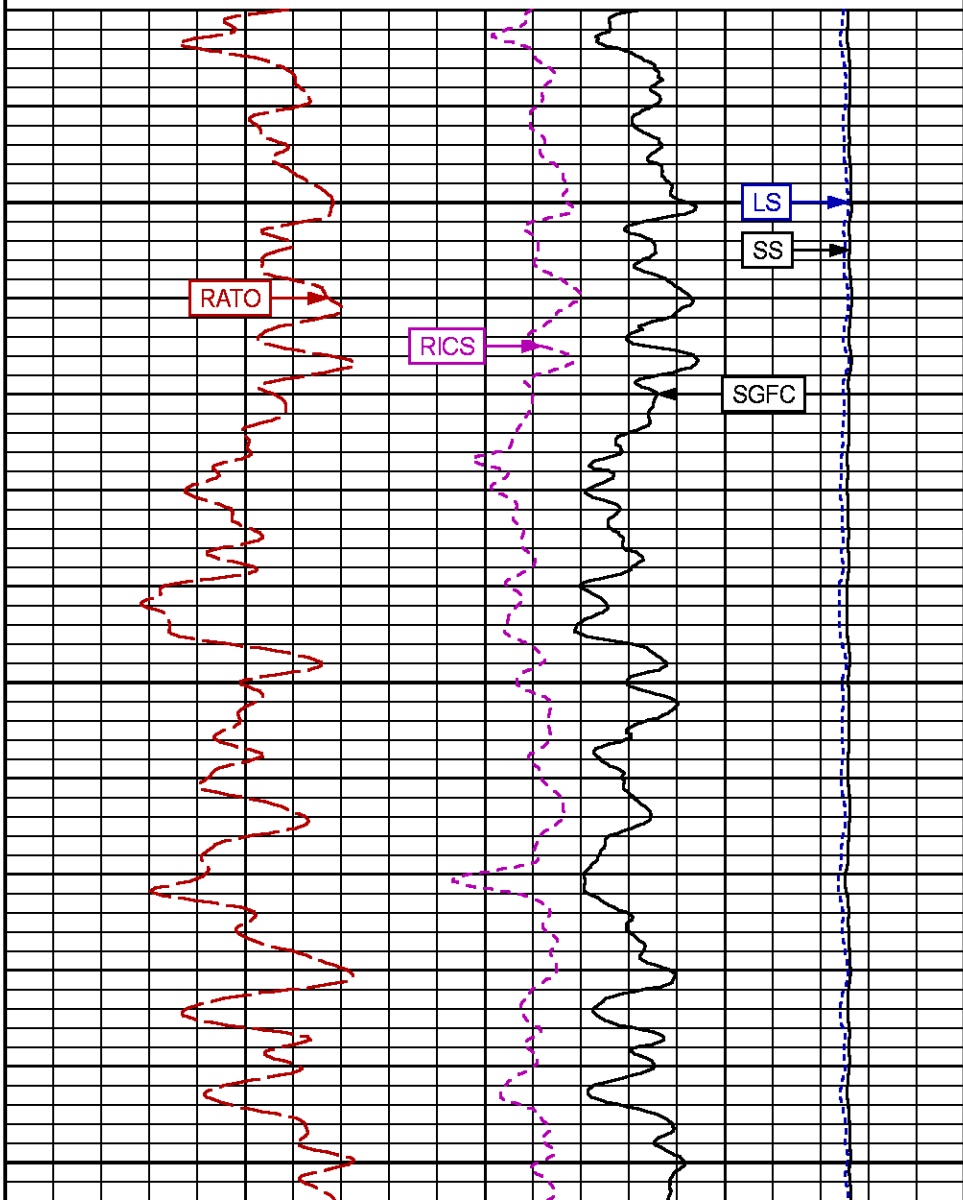
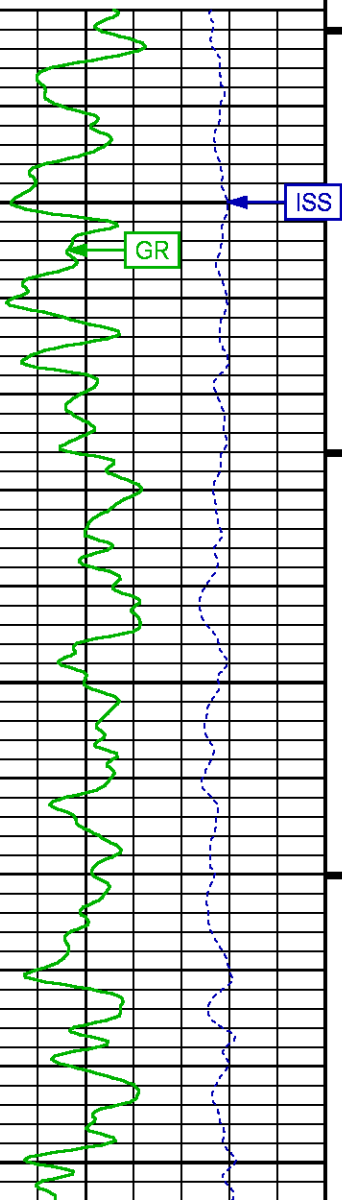
38 8

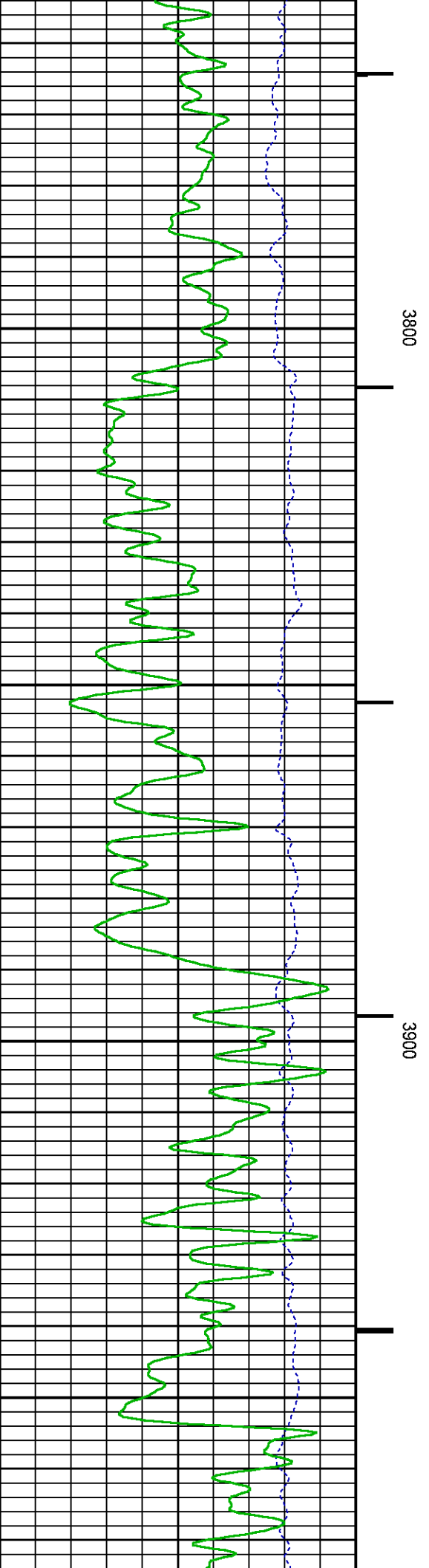
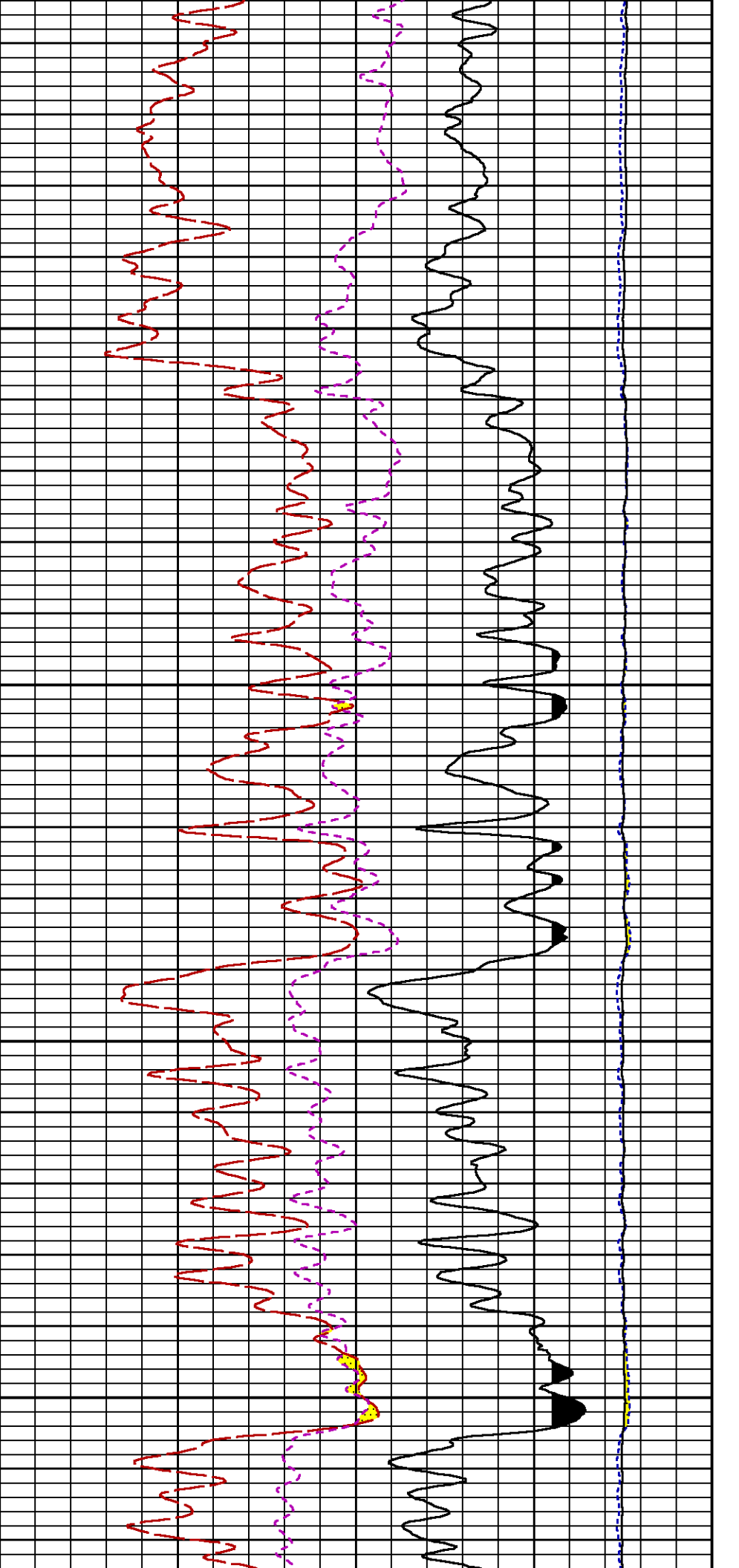
(1)

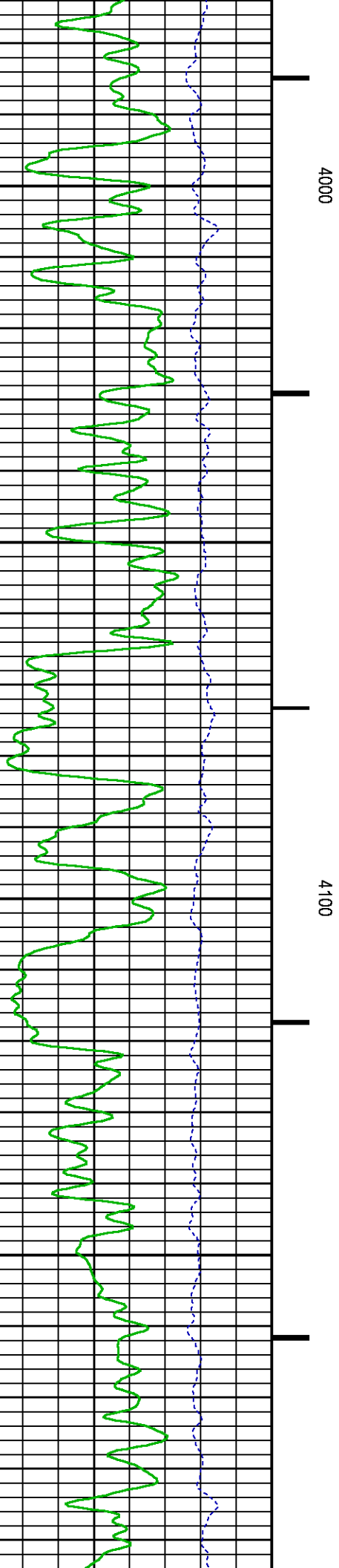
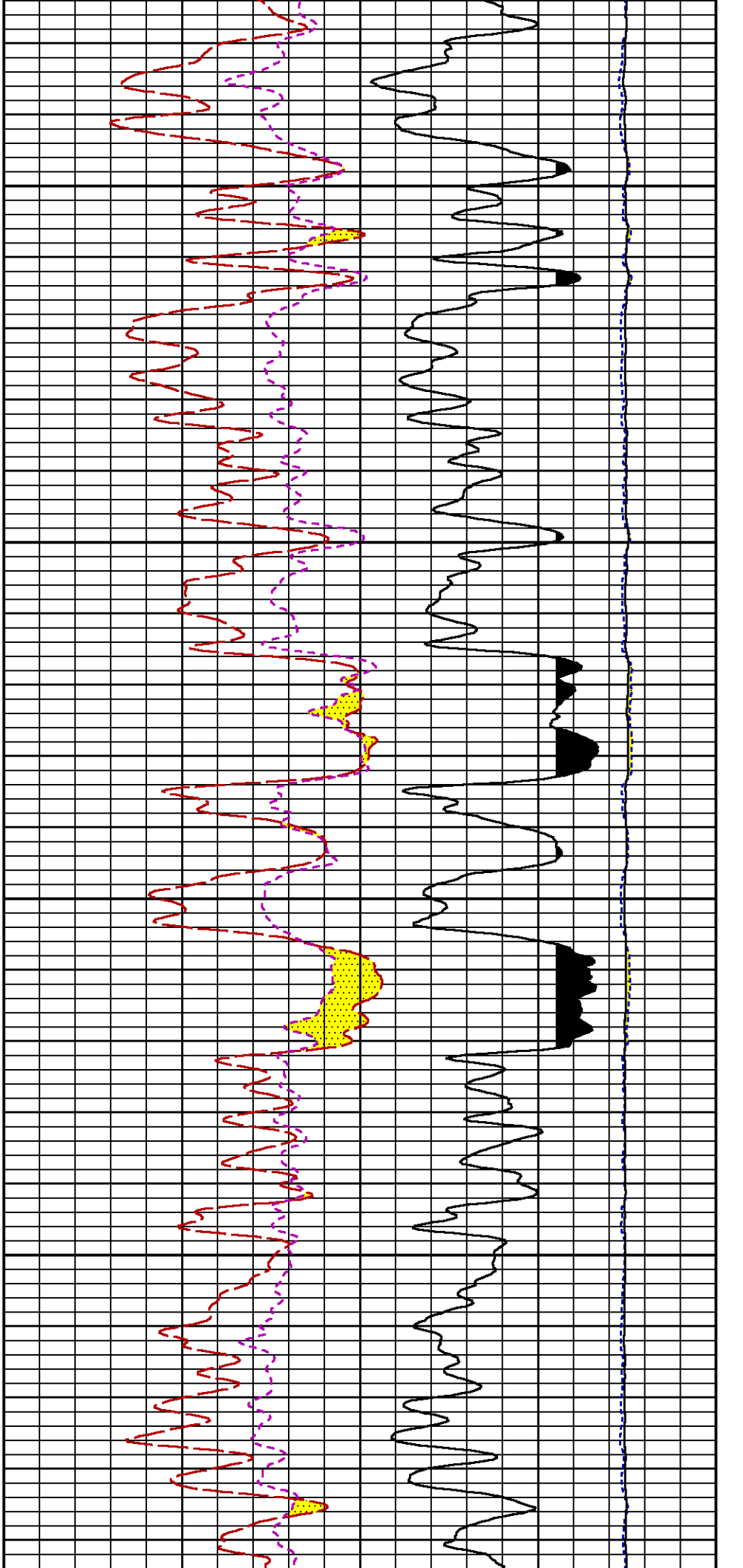
SGFC [sgfc]

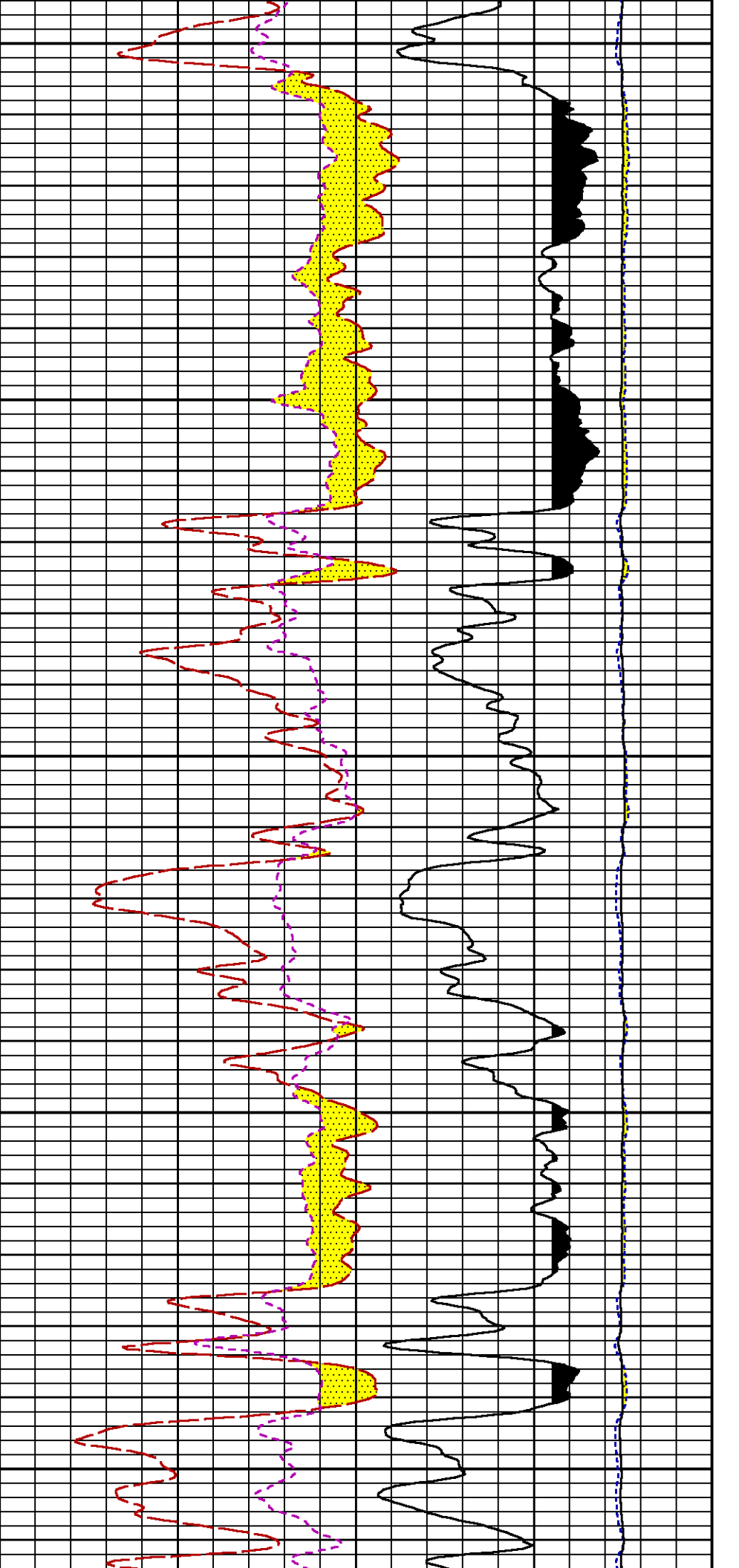
60 0

(1)





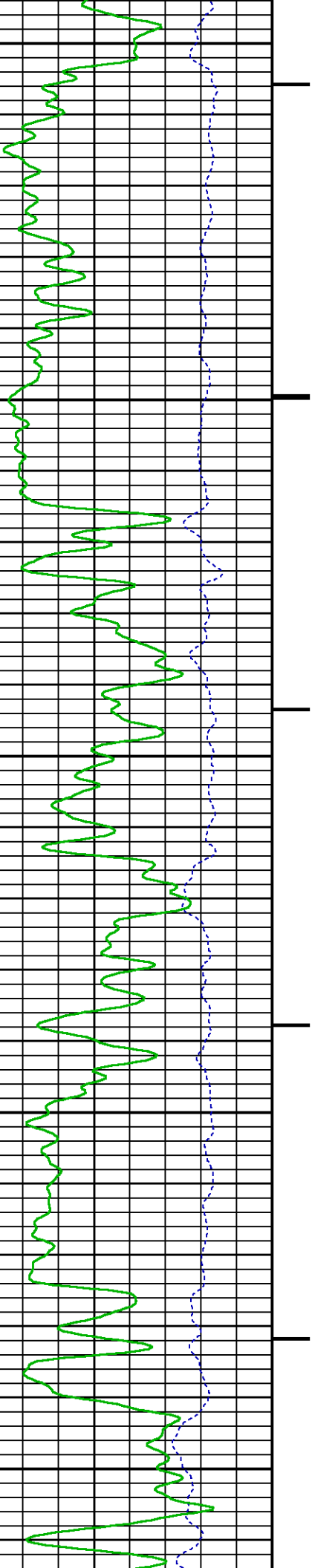


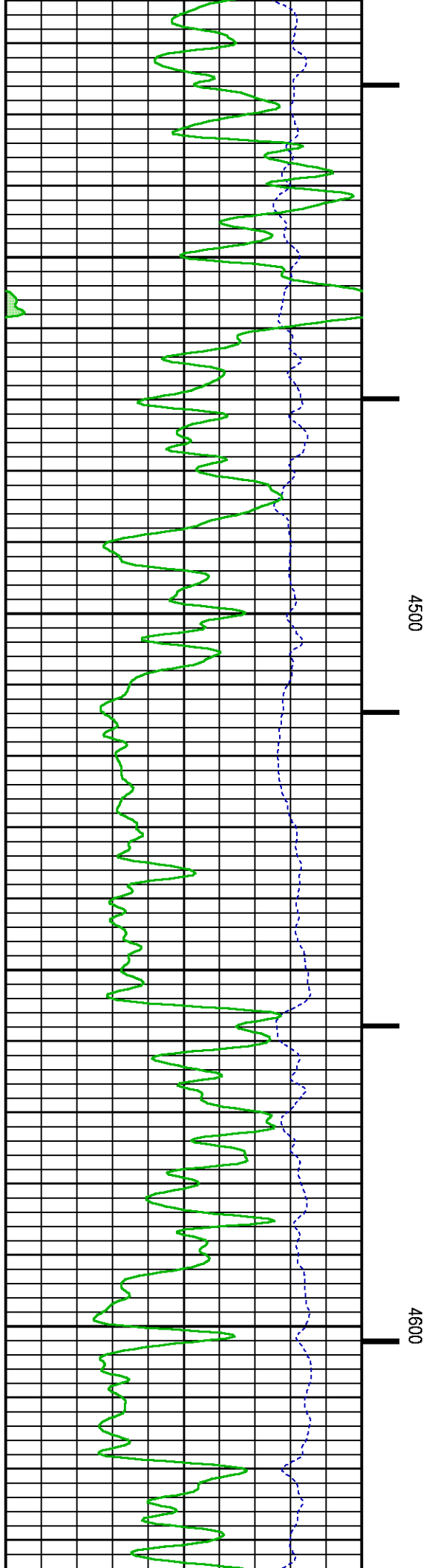
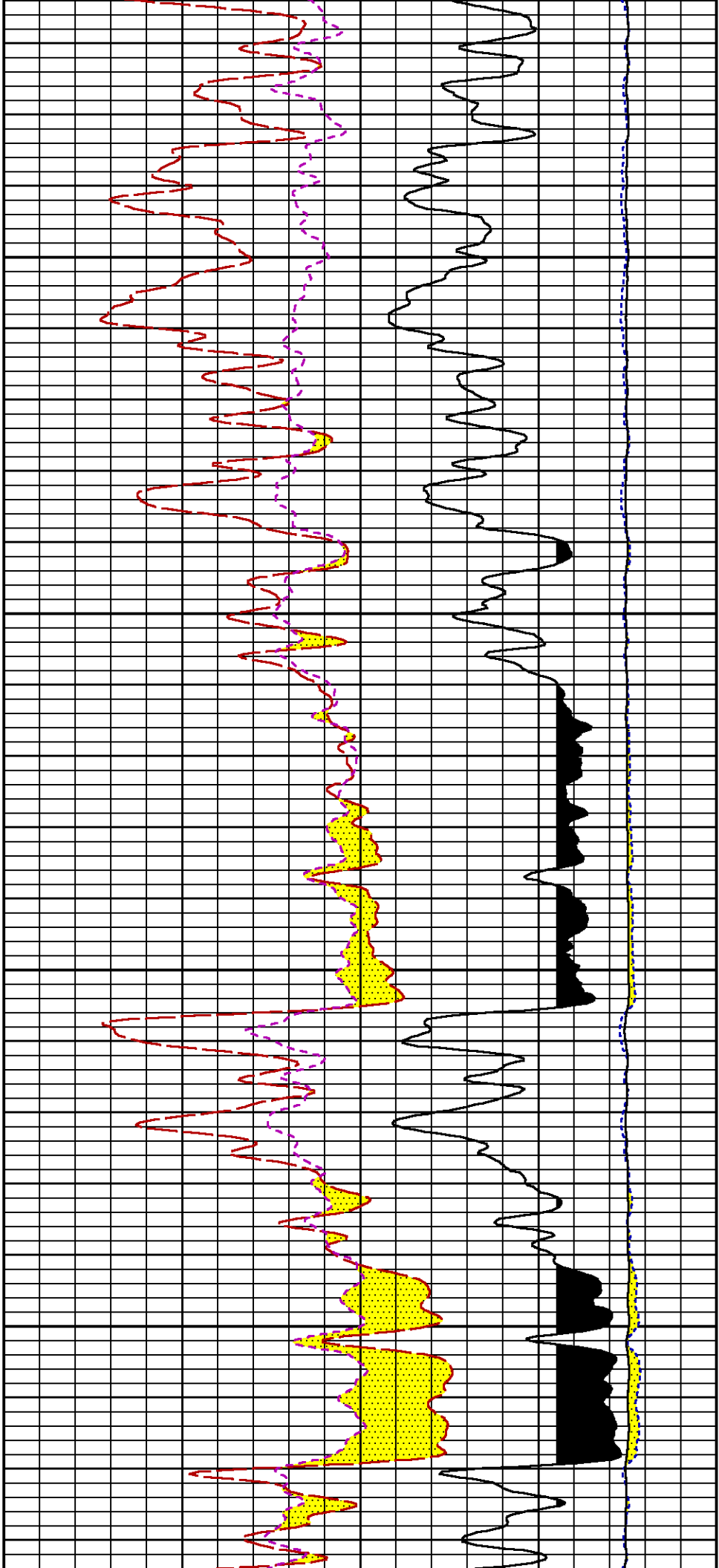


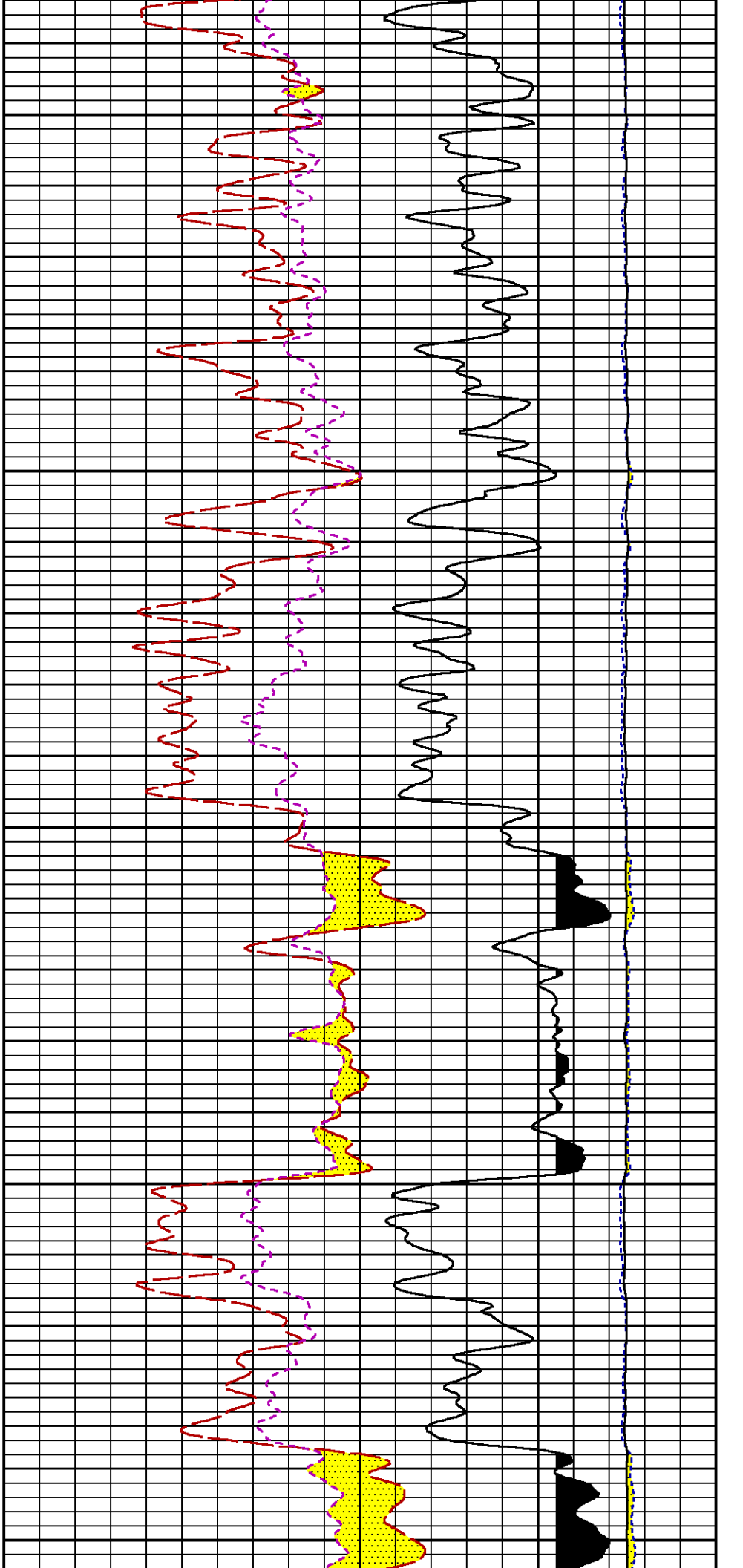
4200

4300

4400

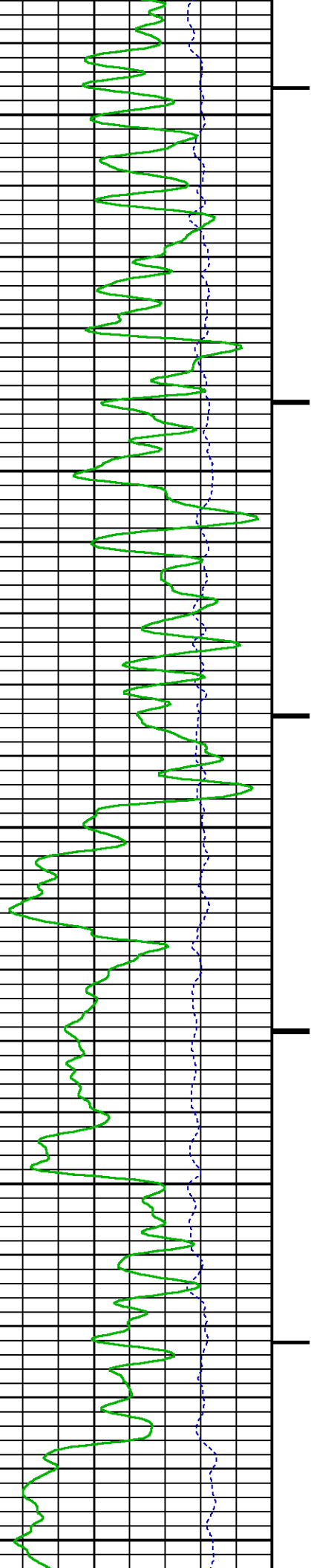


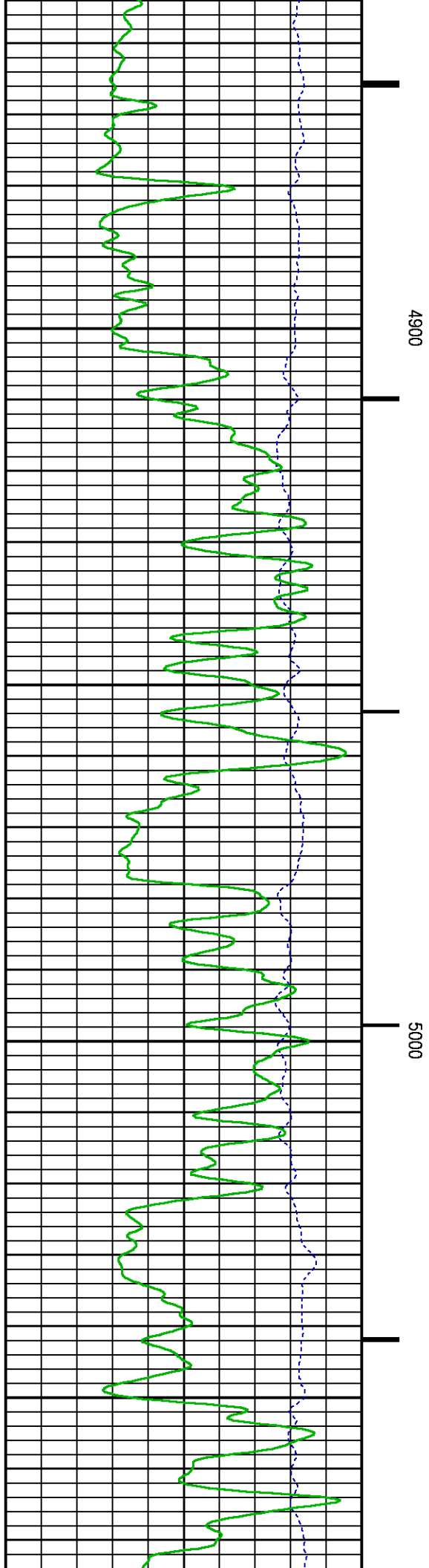
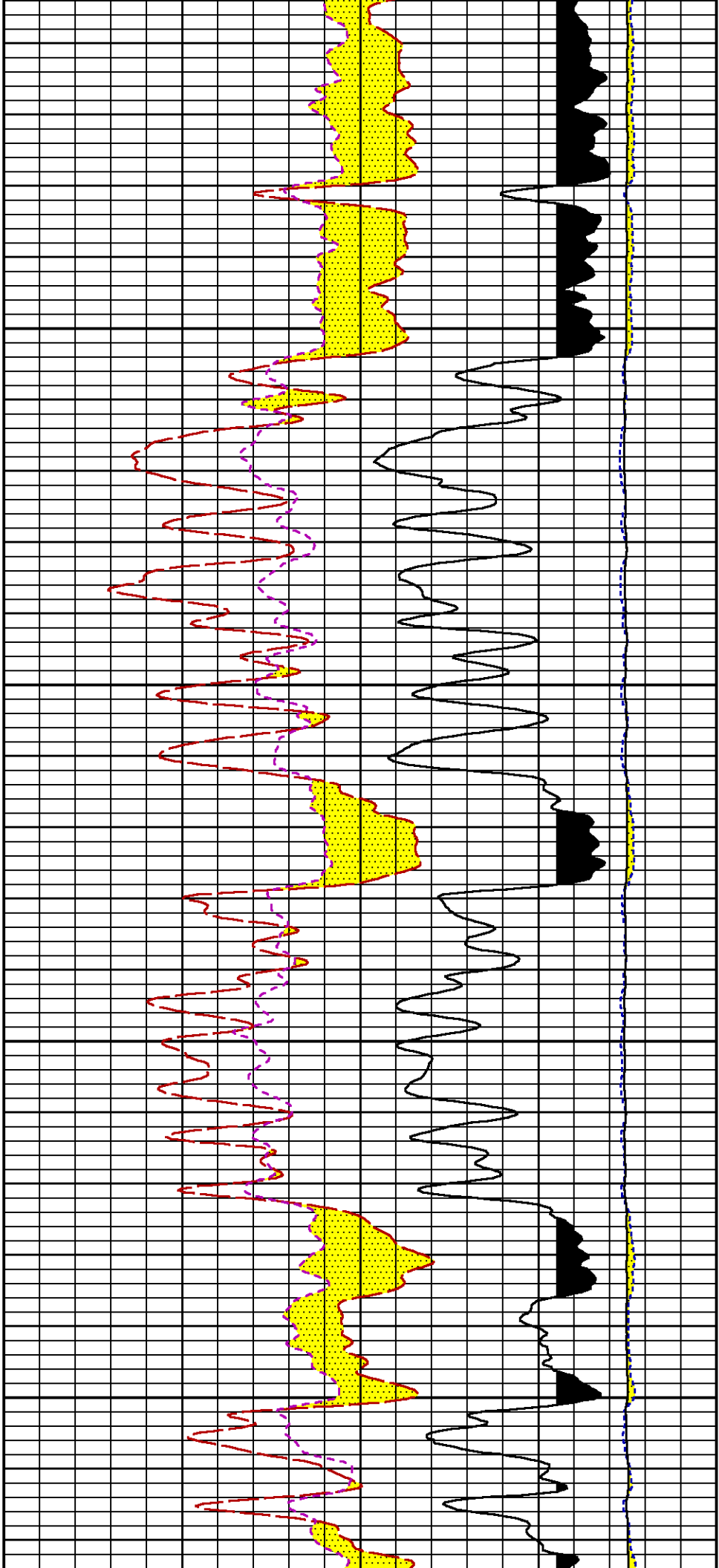


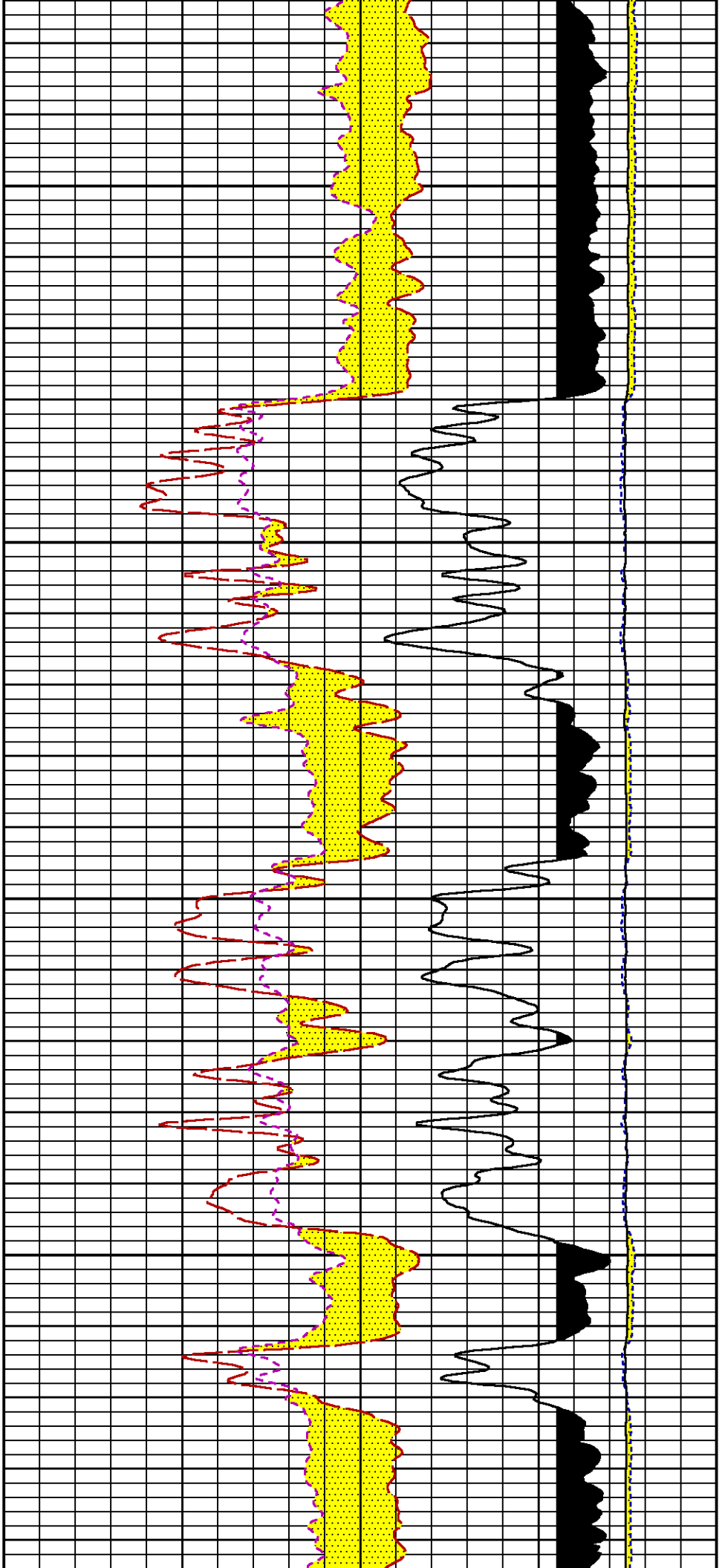


4700

4800

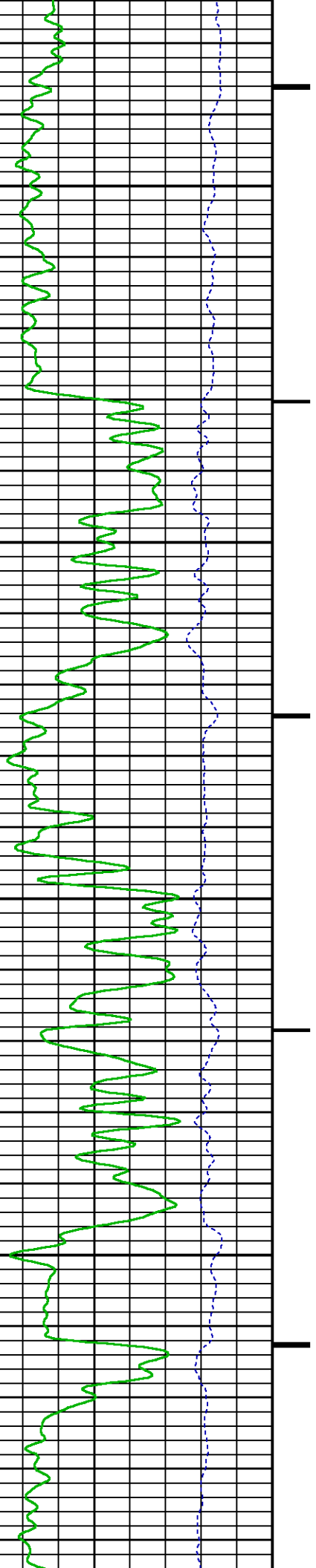


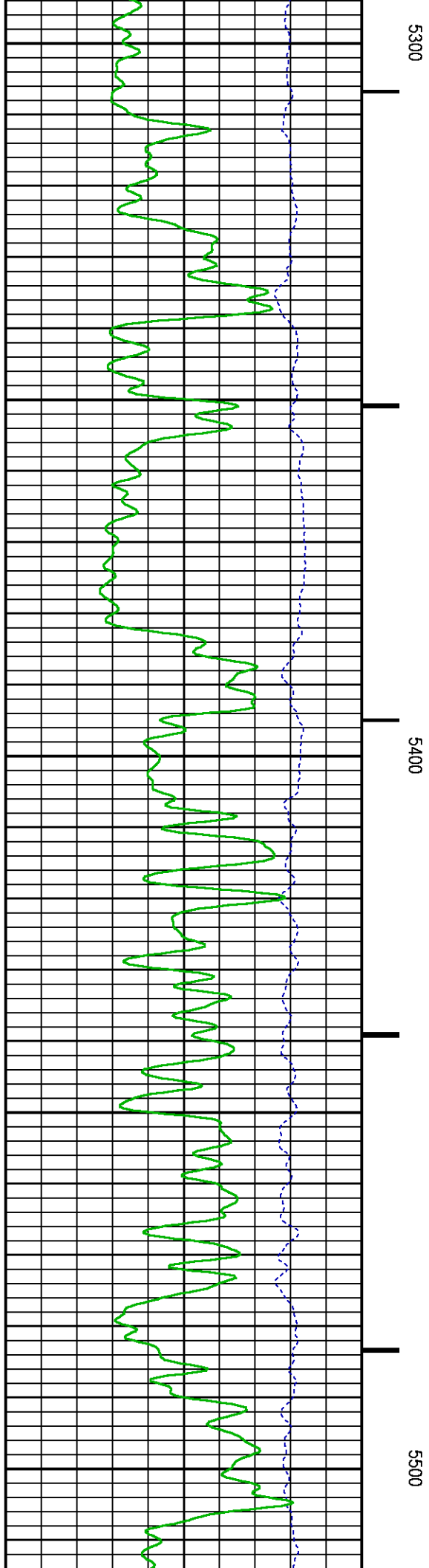
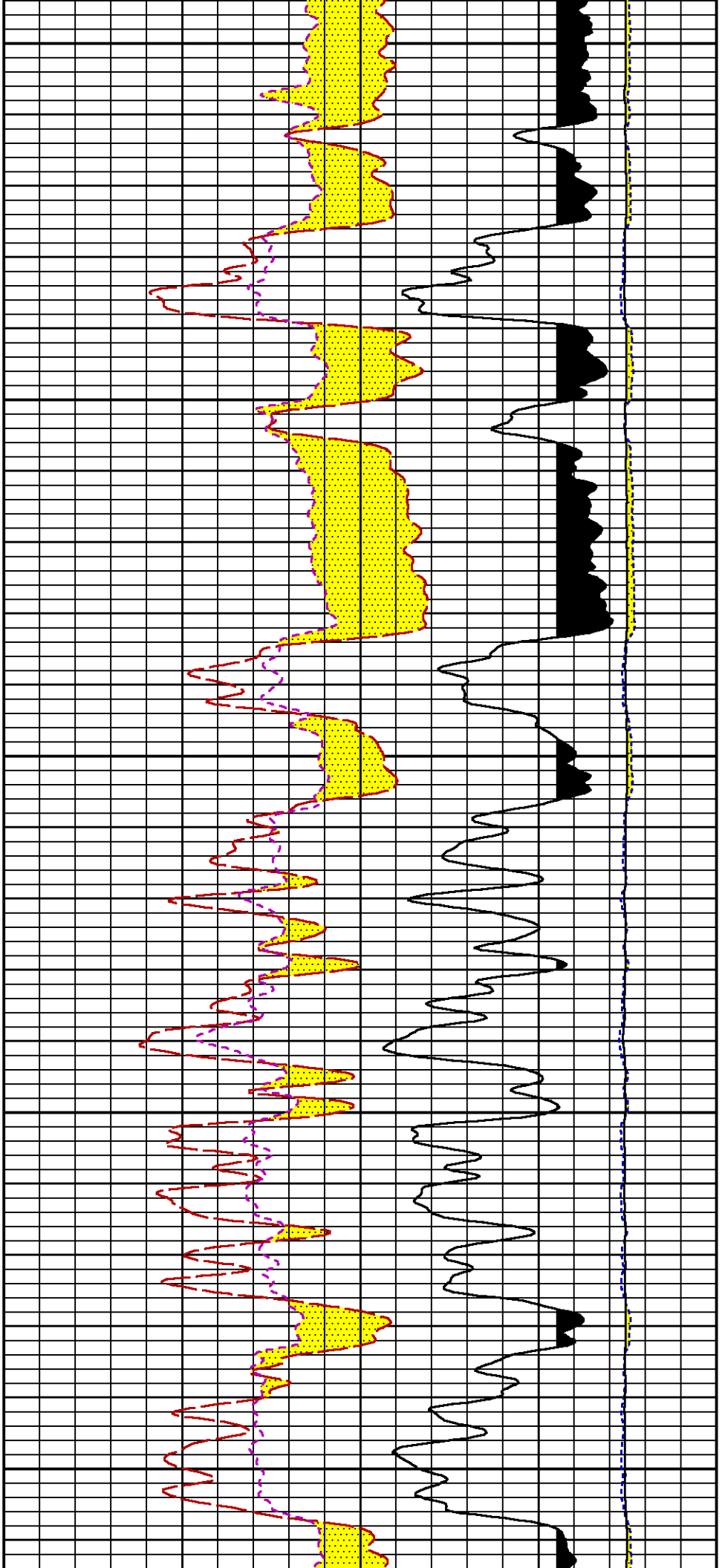


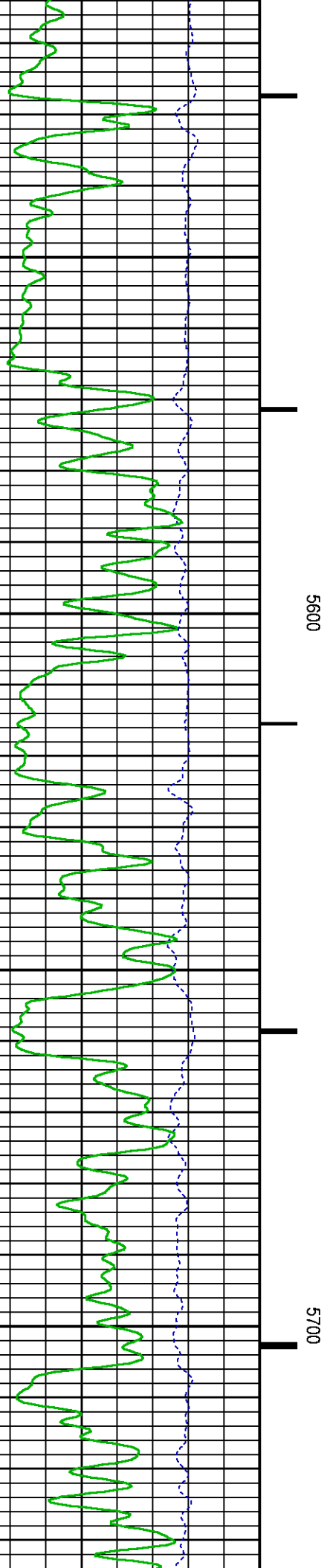
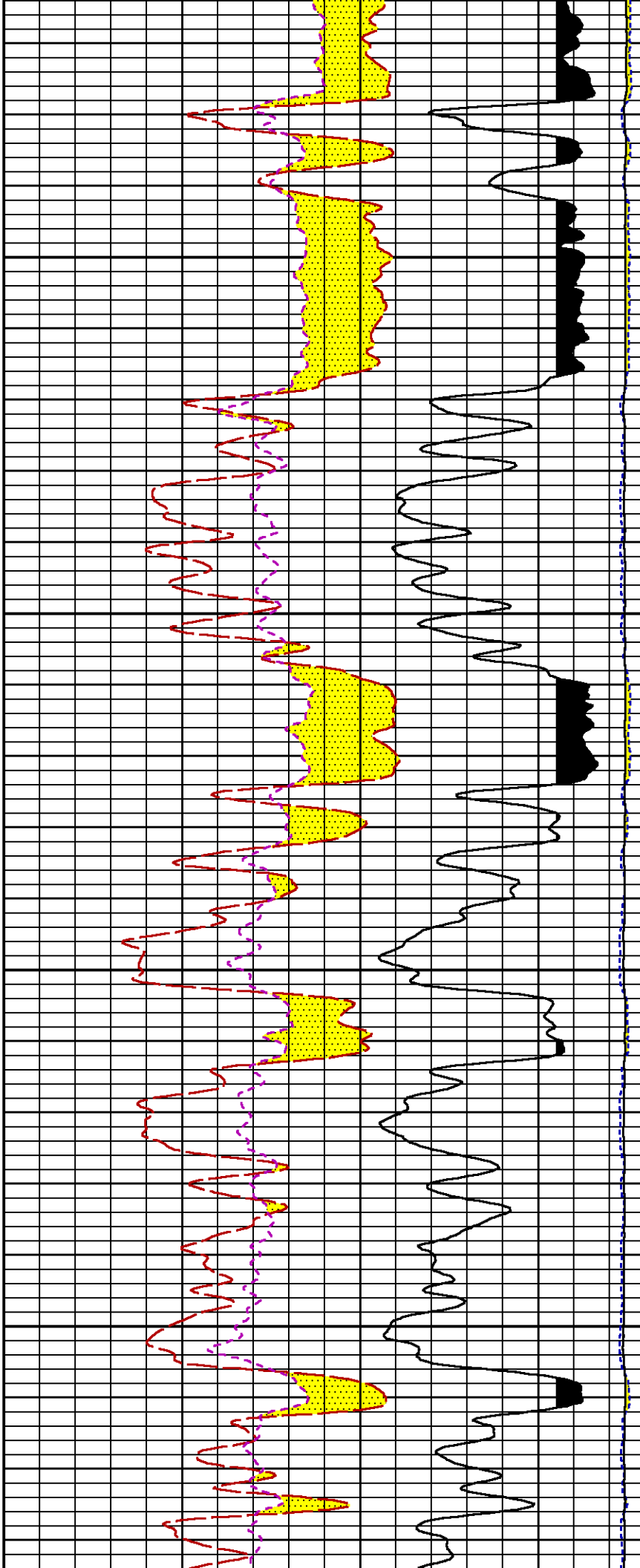


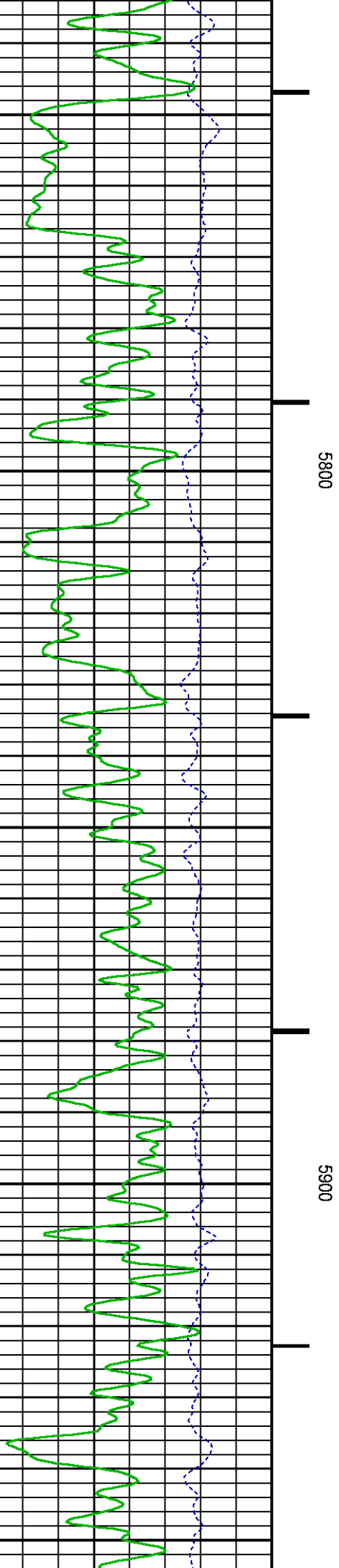
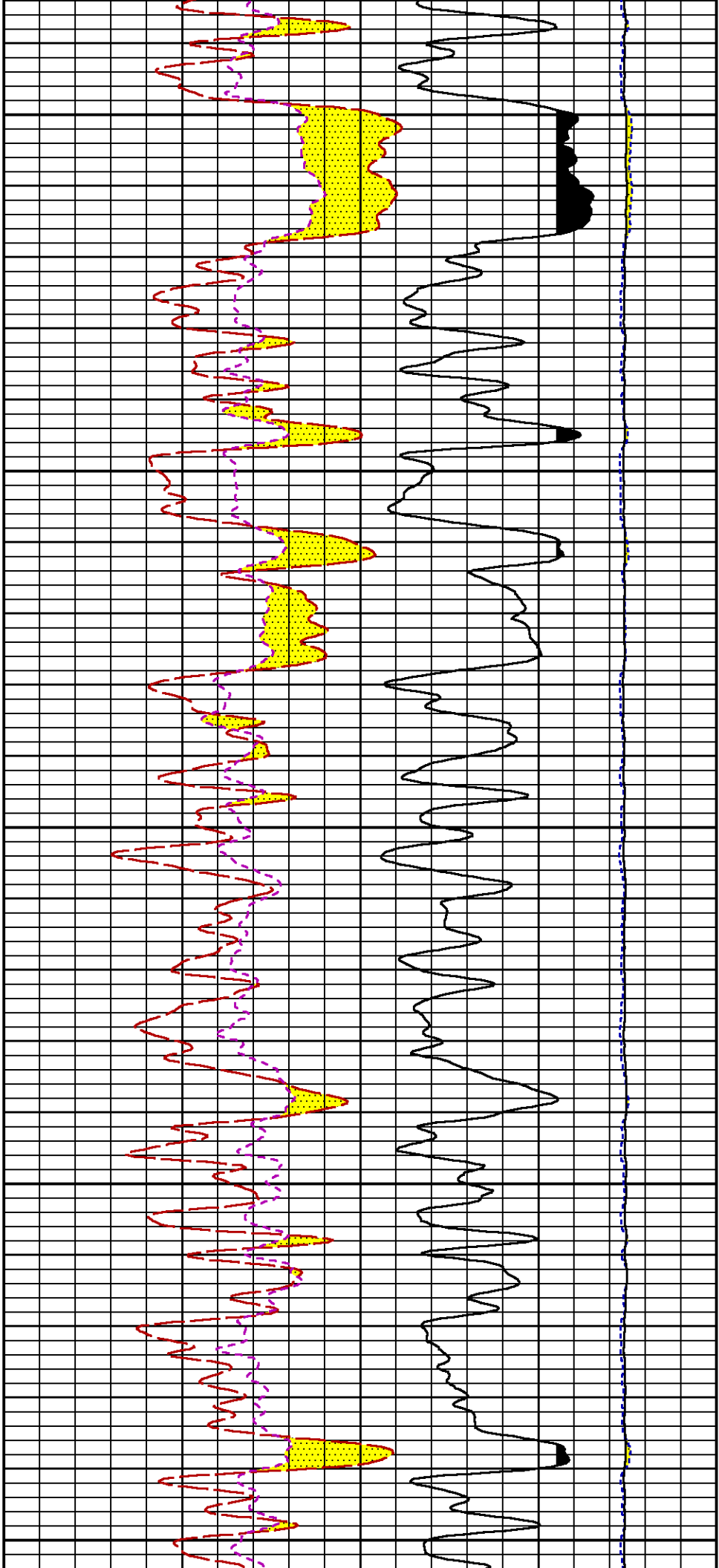
5100

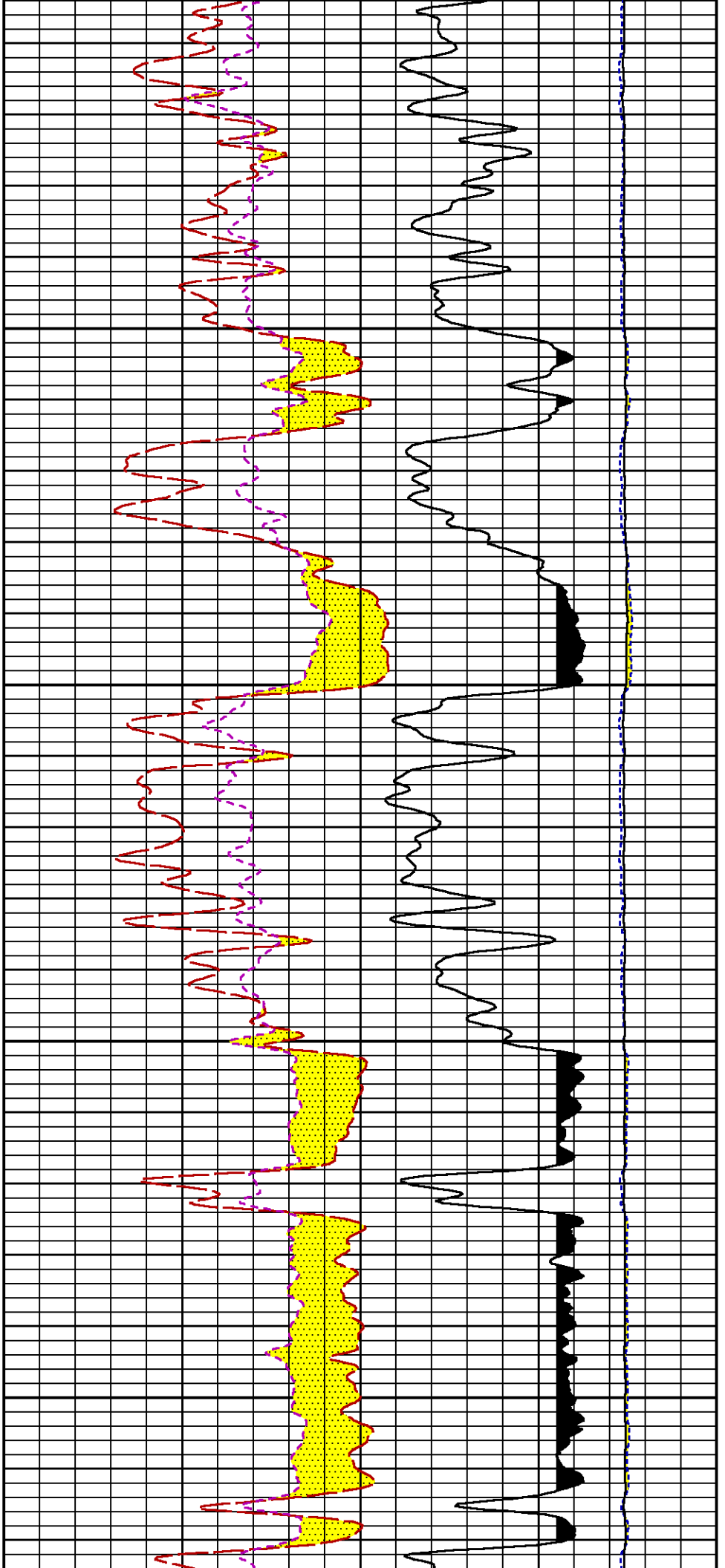
5200





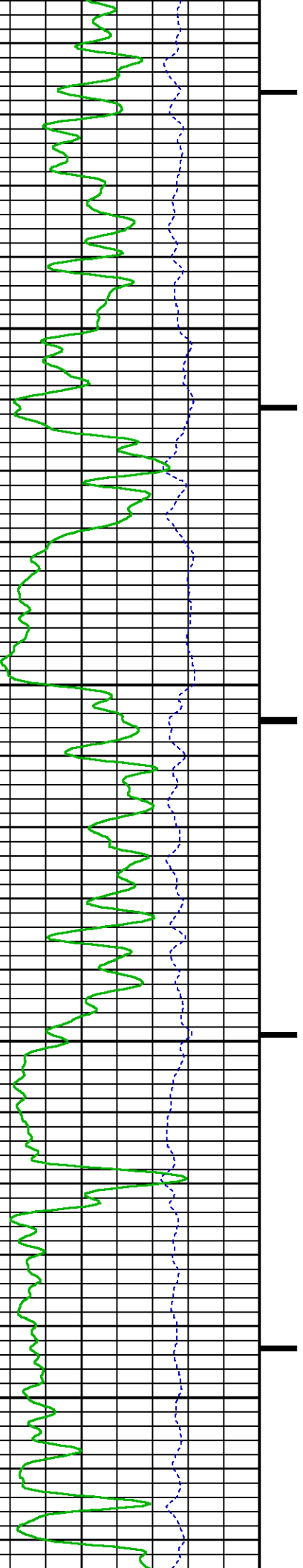


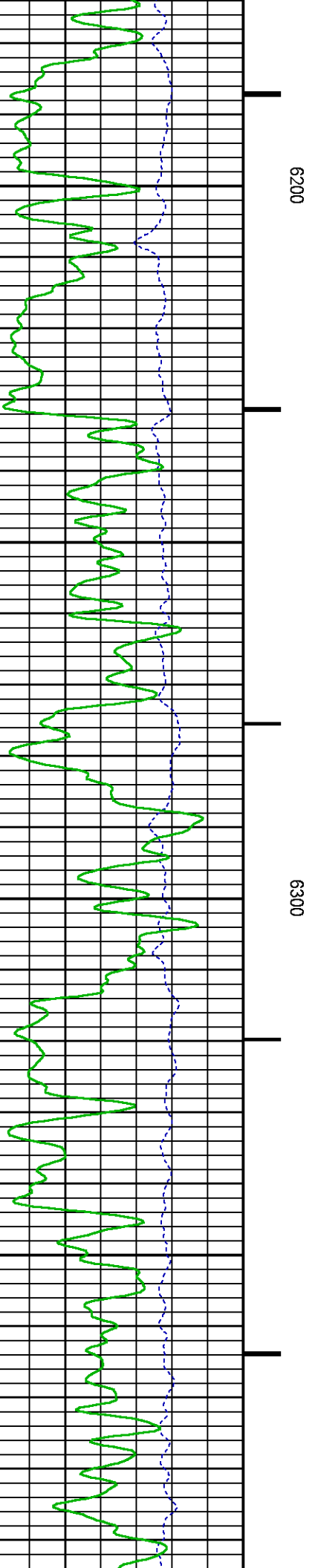
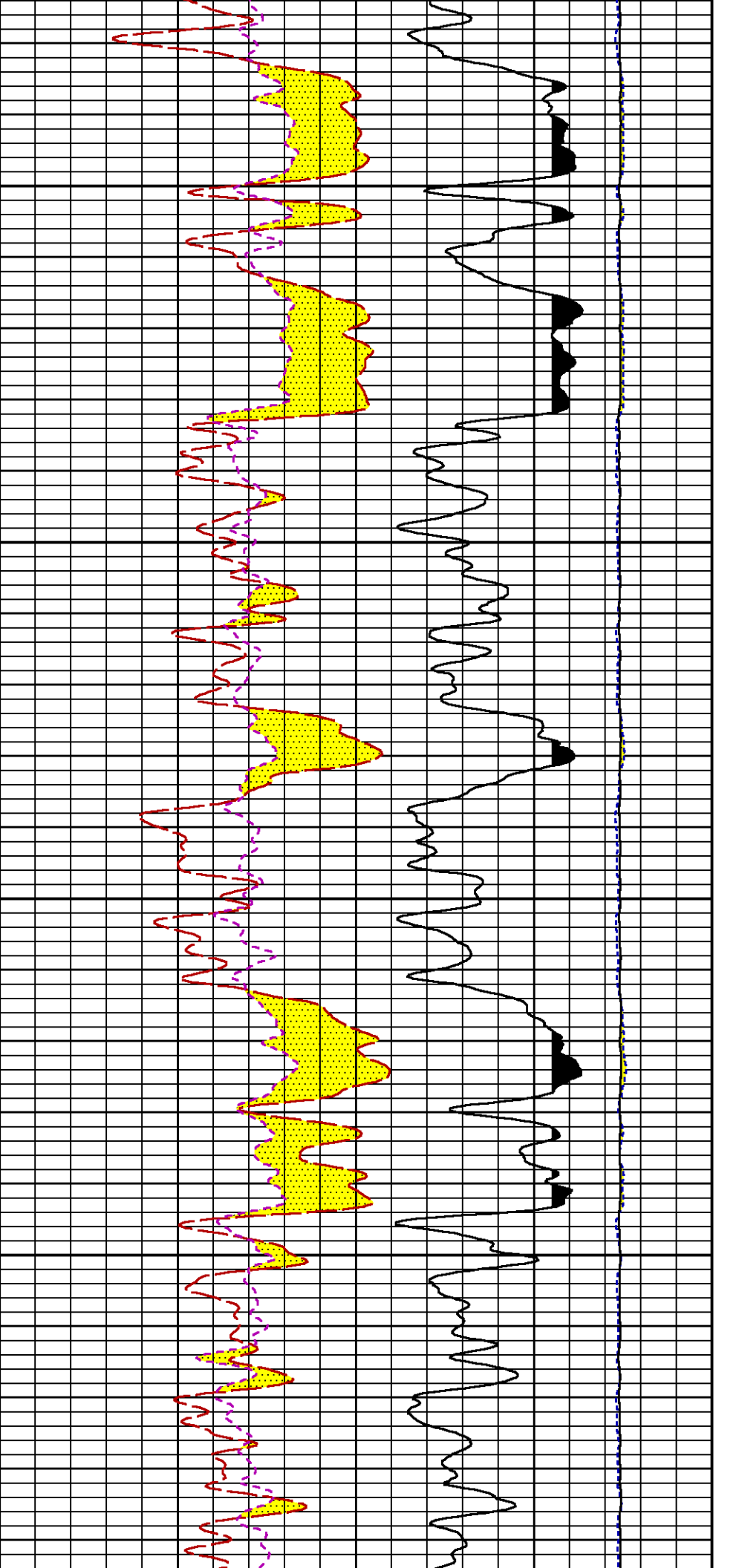


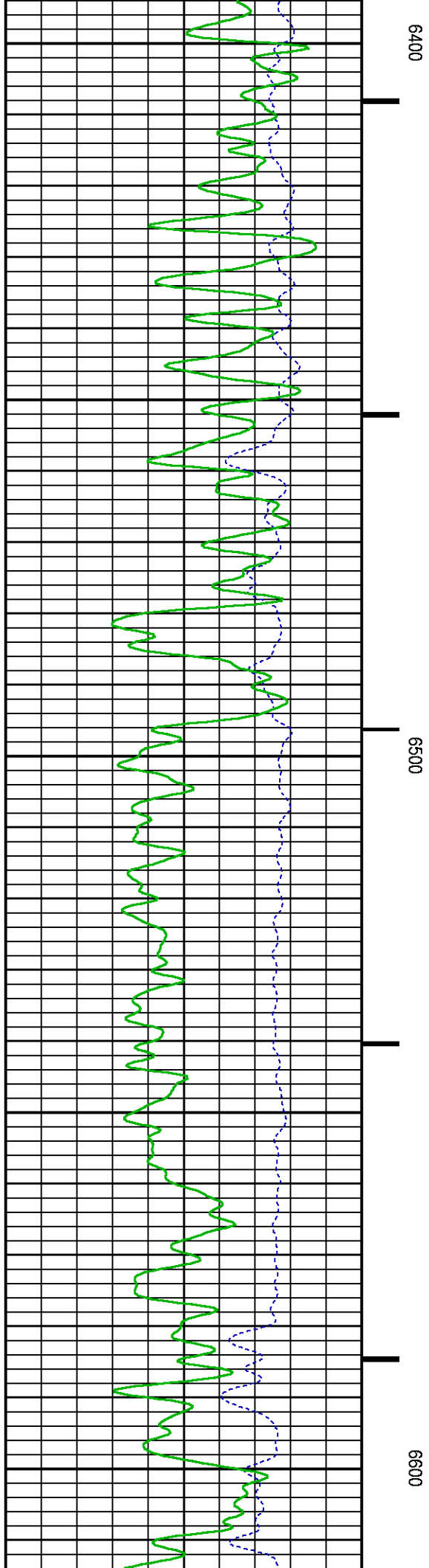
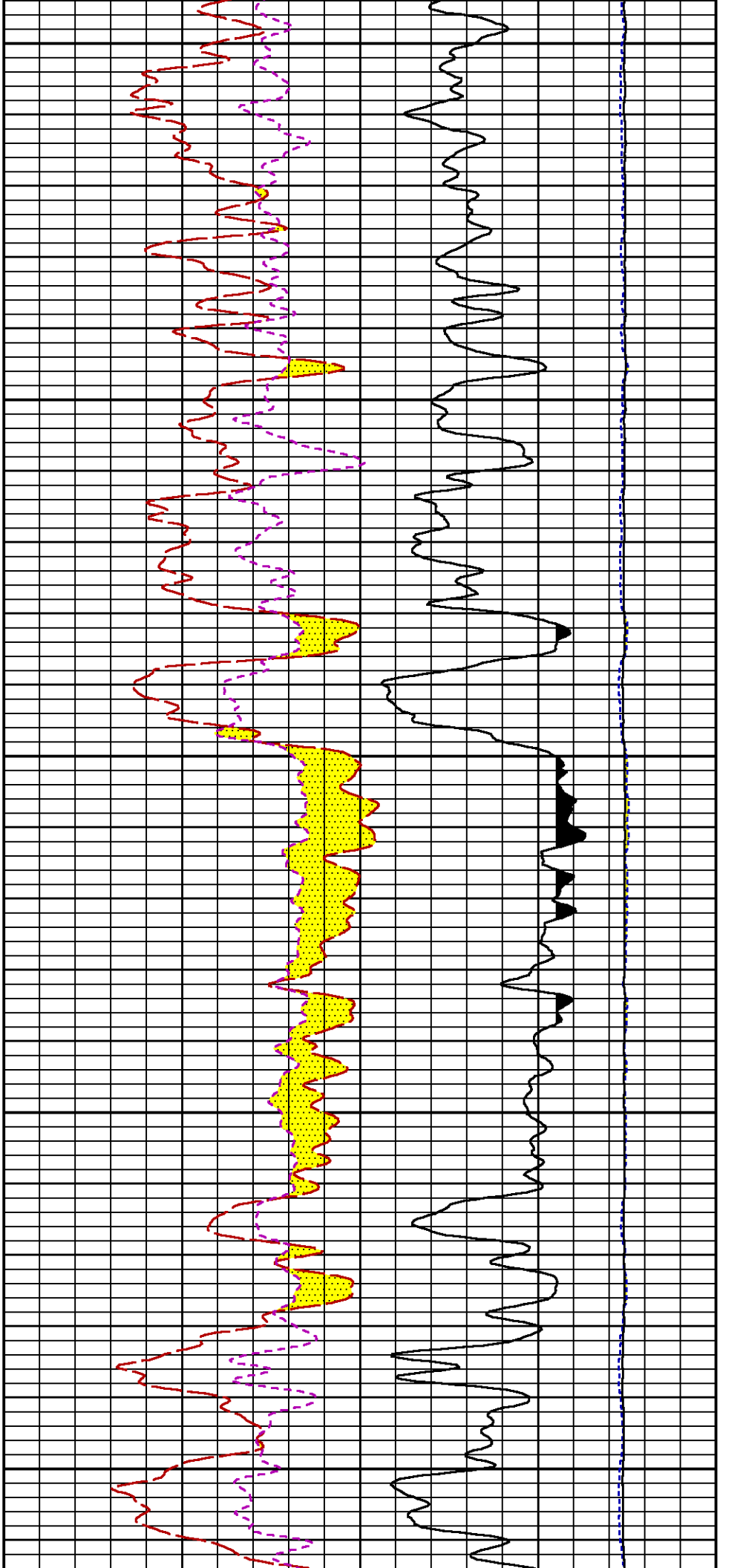


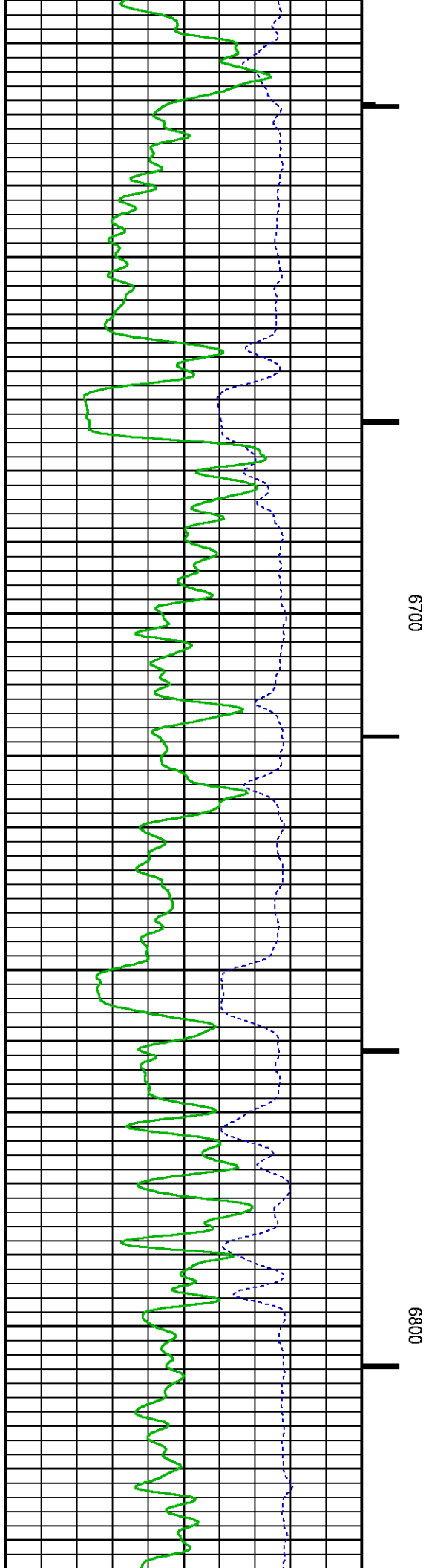
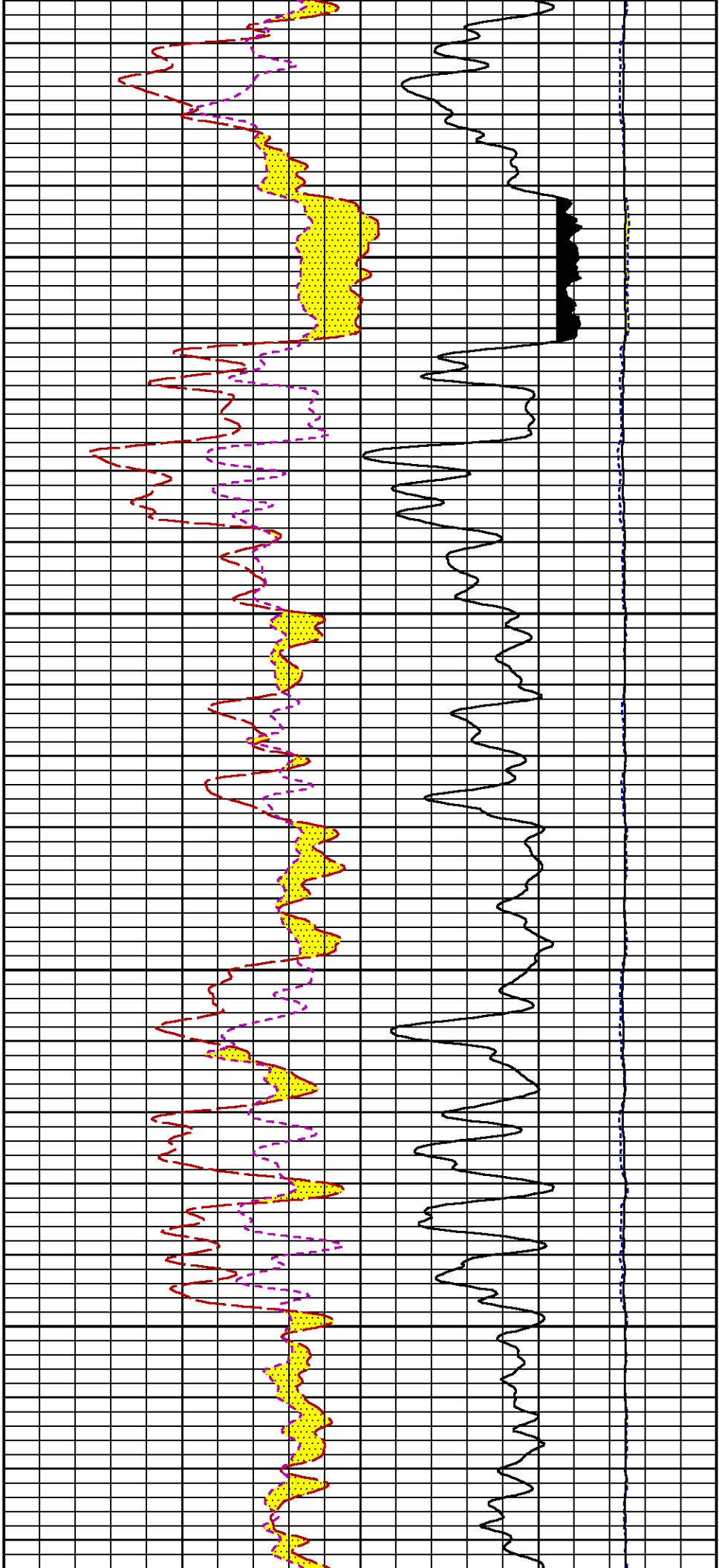
6000

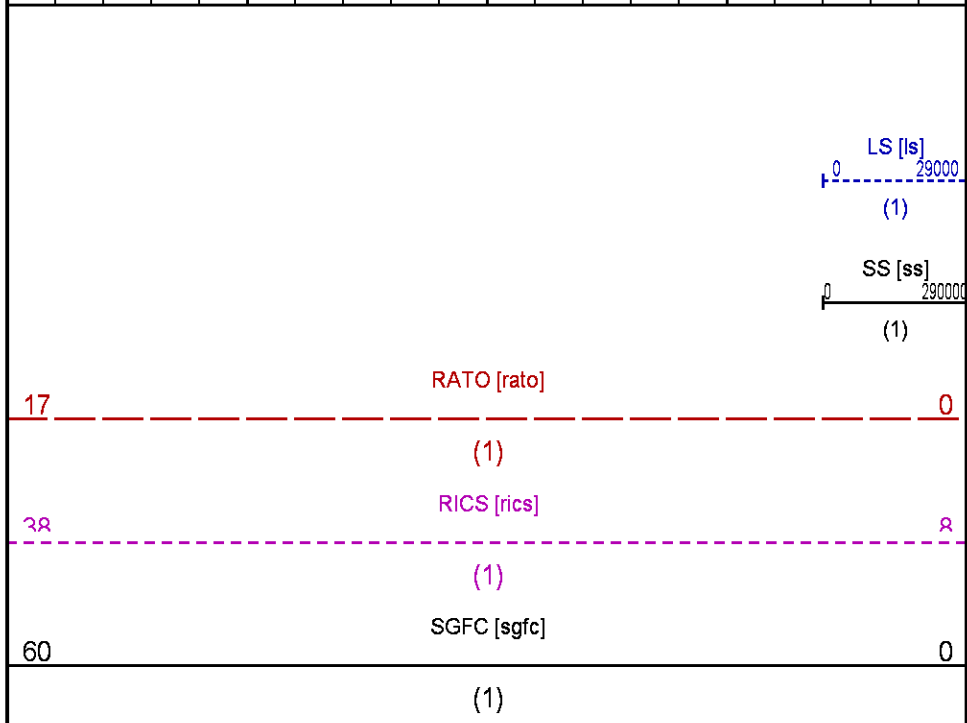
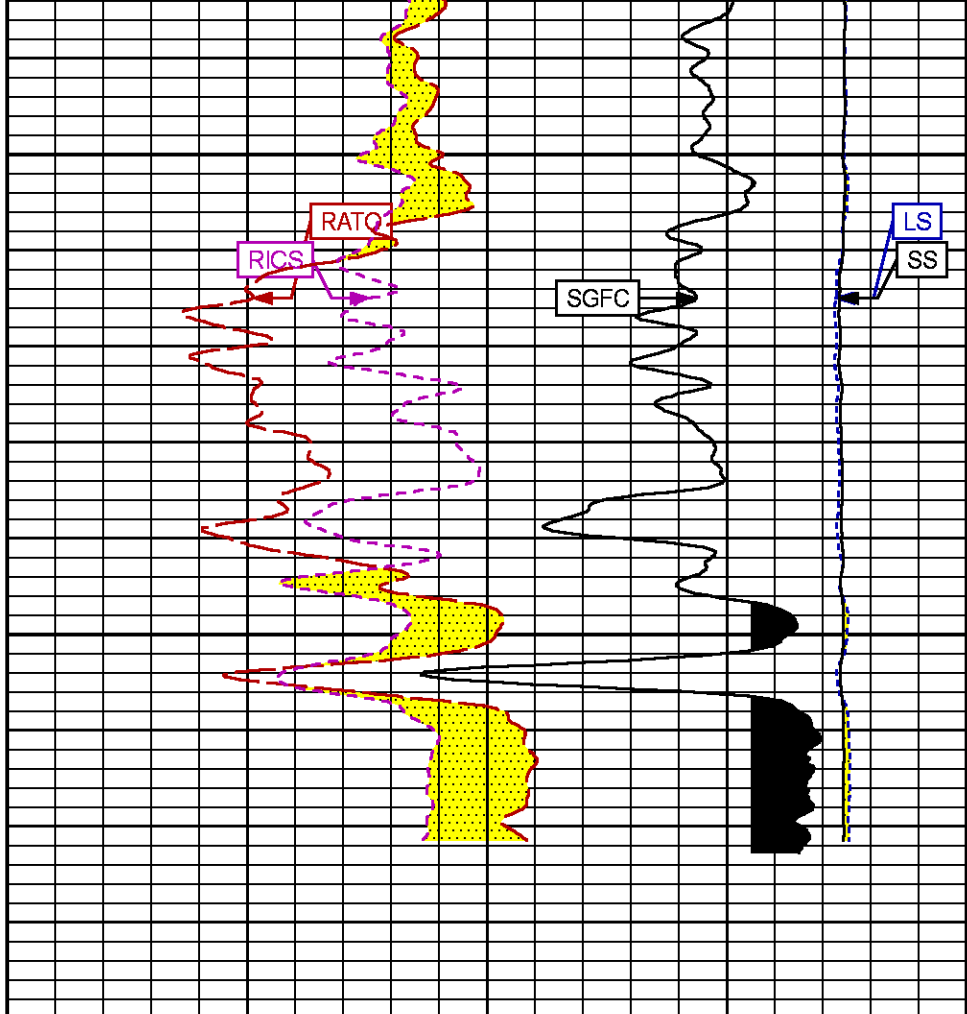
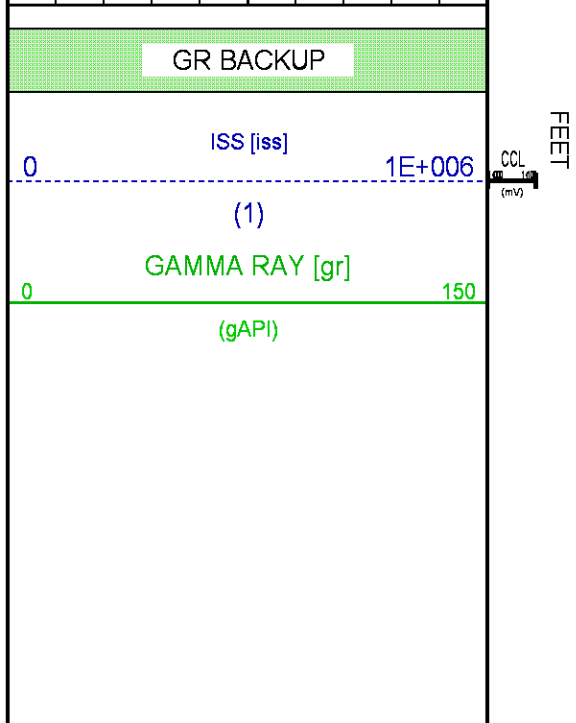
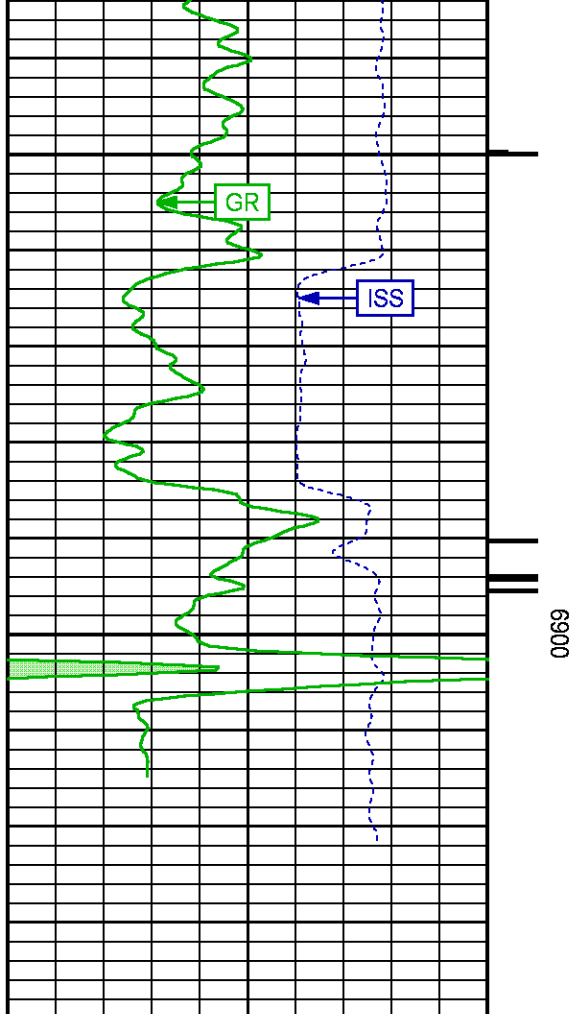
6100











REPEAT SECTION PNC-3D MODE

Plotted: Sat Jan 03 09:10:54 2015

PARAMETER AND FILTER SUMMARY REPORT

FILE: C:\dat1a\093852\ln354h01.prm
LOGGING MODE: DEPTH DIRECTION: UP
TOP DEPTH: 6127.500 ft BOTTOM DEPTH: 6458.242 ft

SYMMETRIC FILTER

MEASUREMENT TYPE	PARAMETER	VALUE	UNITS	INTERVAL (ft)
GR	FILTER ()	medium (1)		TOP BOTTOM

RPM PROCESSING

MEASUREMENT TYPE	PARAMETER	VALUE	UNITS	INTERVAL (ft)	
PNC Parameters	BOREHOLE CONTENTS	FLUID		TOP	BOTTOM
	OPEN/CASED HOLE	CASED HOLE		"	"
	BOREHOLE SIZE	8.75	in	"	"
	CASING SIZE	4.50	in	"	"
	MATRIX	SANDSTONE		"	"
	CORRECTION BUFFER	11		"	"

CURVE DESCRIPTION REPORT

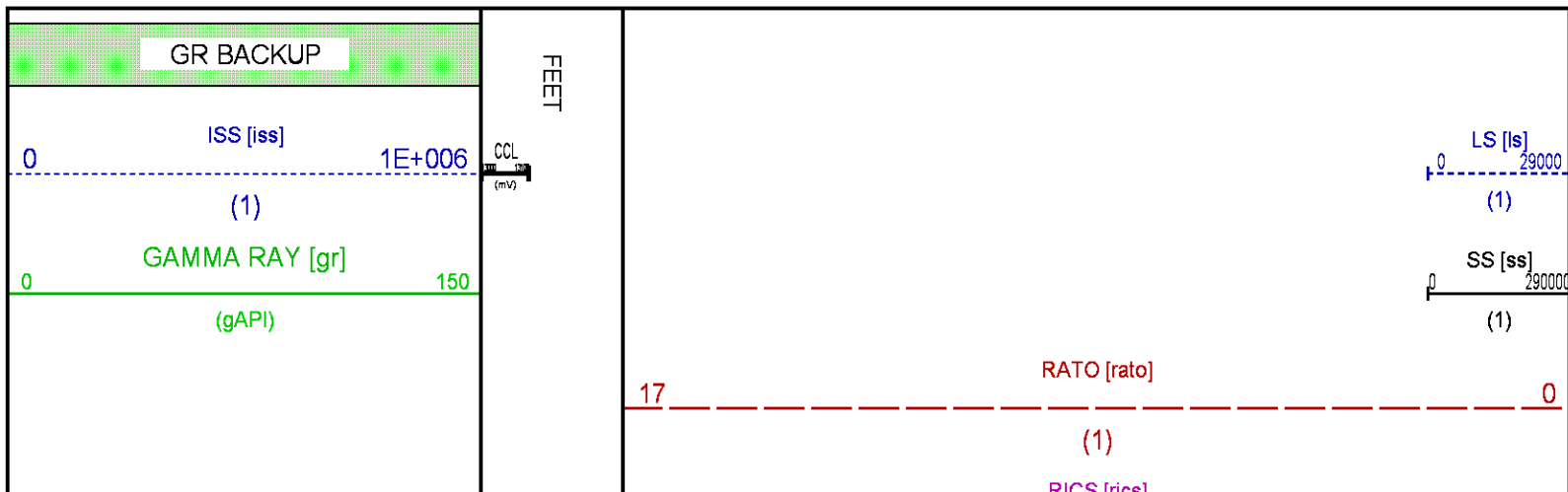
CURVE NAME	CREATION DATE	CURVE DESCRIPTION
F1:CCL	Jan 2 12:12:11 2015	CASING COLLAR LOCATOR
F1:GR	Jan 2 12:12:11 2015	GAMMA RAY
F1:ISS	Jan 2 12:12:11 2015	INELASTIC SHORT SPACE COUNT RATE
F1:LS	Jan 2 12:12:11 2015	LONG SPACE COUNT RATE
F1:RATO	Jan 2 12:12:11 2015	SHORT/LONG SPACE COUNT RATE RATIO
F1:RICS	Jan 2 12:12:11 2015	SHORT SPACE INELASTIC TO CAPTURE COUNT RATE RATIO (ISS/CSS)
F1:SGFC	Jan 2 12:12:11 2015	CORRECTED FORMATION SIGMA
F1:SS	Jan 2 12:12:11 2015	SHORT SPACE COUNT RATE

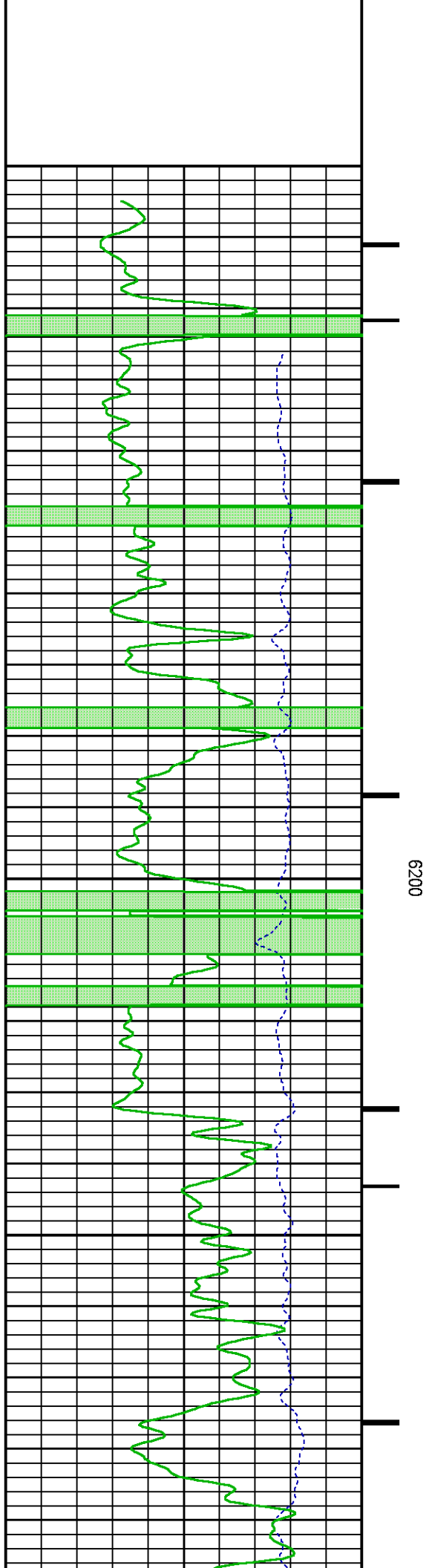
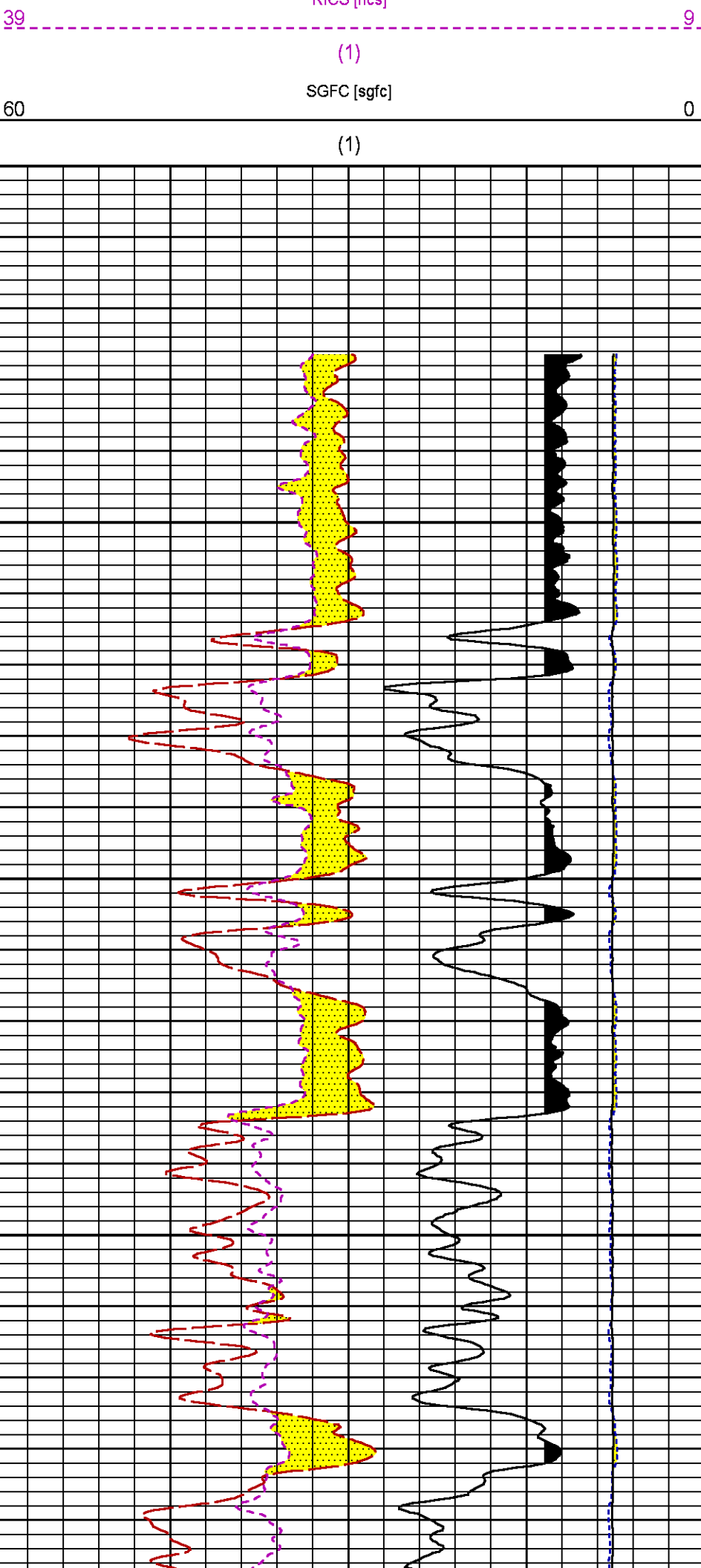
CURVE MEASURE POINT OFFSET

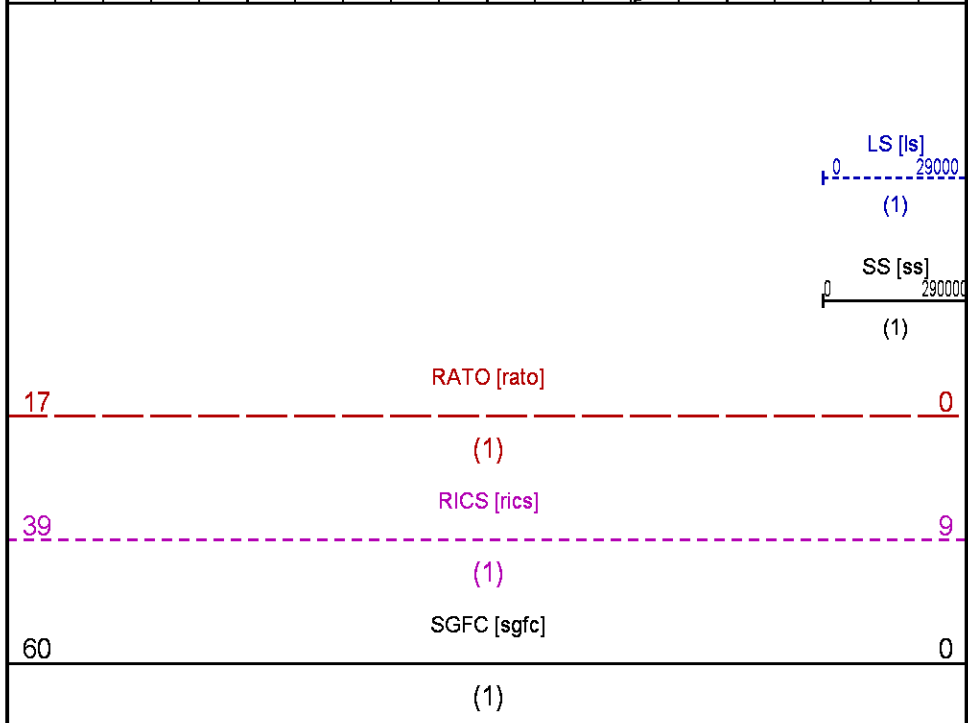
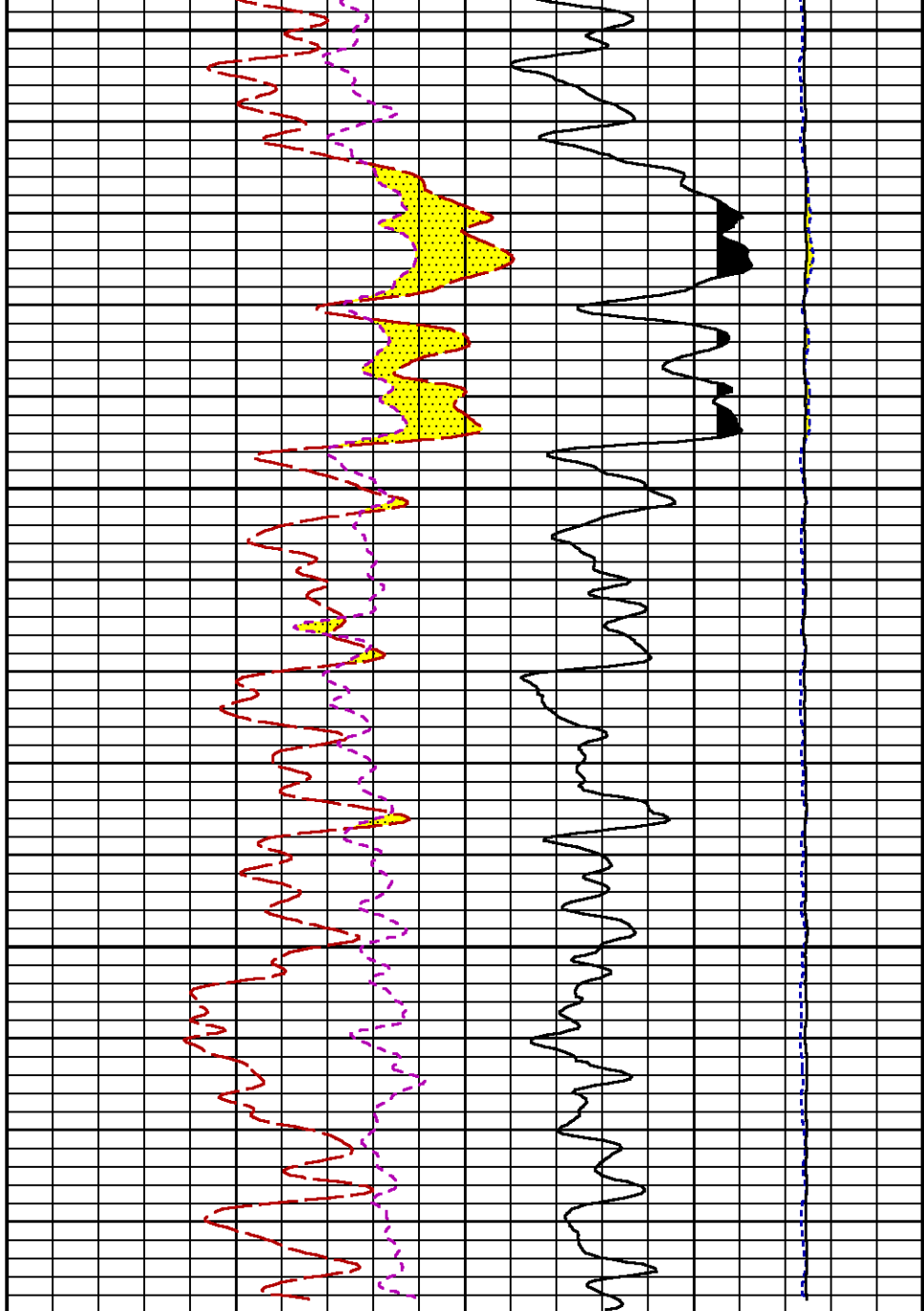
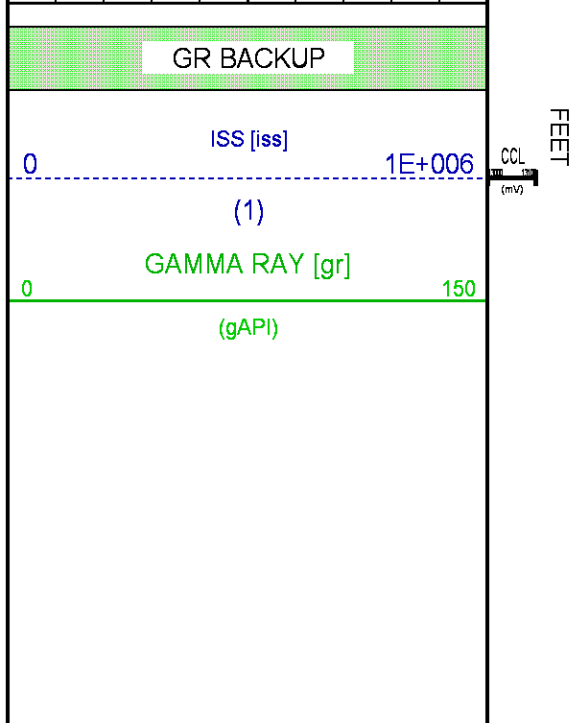
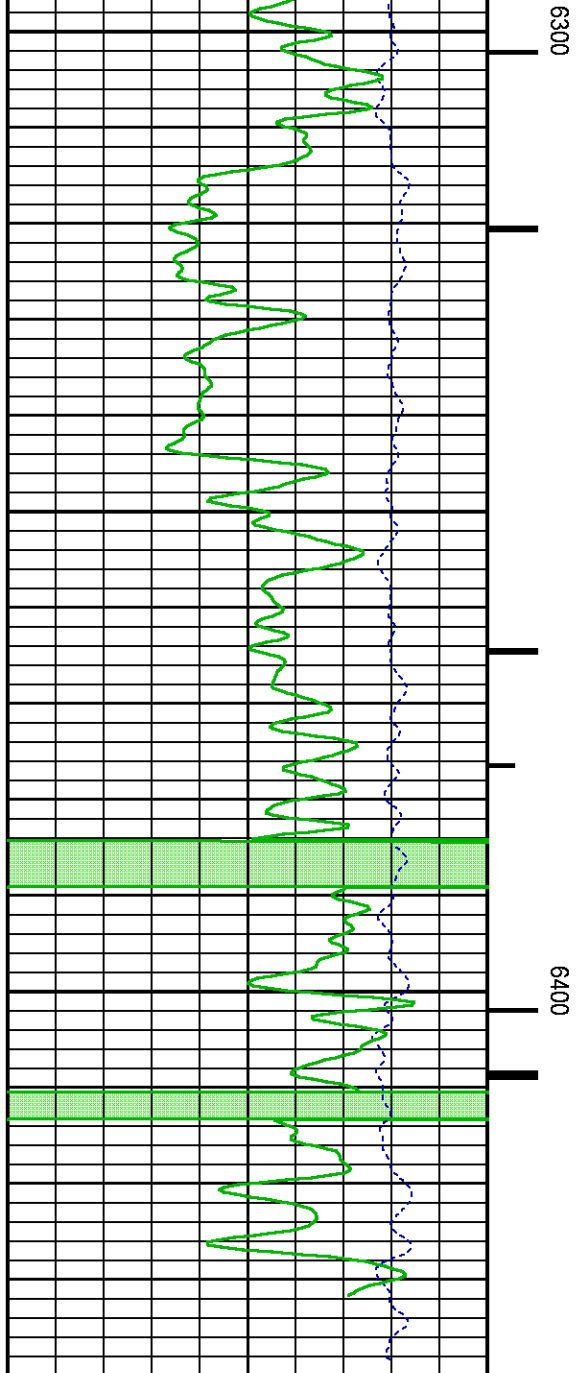
CURVE	OFFSET (ft)	CURVE	OFFSET (ft)	CURVE	OFFSET (ft)	CURVE	OFFSET (ft)
CCL	25.00	ISS	12.75	RATO	12.75	SGFC	12.75
GR	22.75	LS	12.75	RICS	12.75	SS	12.75

Presentation : BHUGHES-06627:C:\dat1a\093852\433_RPM_REPEAT.fvpdf [5"/100' Scale]
Plot Interval : 6101.5 - 6439.75 Feet

Data File 1 : F1 : BHUGHES-06627:C:\dat1a\093852\433_RPM_REPEAT.xtf
Created On : Jan 2 12:12:11 2015
Company : WPX ENERGY
Well : WPX GM 433-28
Field : GRAND VALLEY
File Interval : 6100.75 - 6454.5 Feet
OCT : n354h







CALIBRATION / VERIFICATION SUMMARY

Source File: C:\dat1a\093852\354h.tp1

GR PRIMARY CALIBRATION SUMMARY

TOOL #: 2812LA 10274382

DATE/TIME PERFORMED: Tue Dec 09 14:04:49 2014

UNIT #: 3885TD Z004271

CALB JIG #: 4702NK WA-612

	BACKGROUND (cts/s)	CALBRTR ON (cts/s)	CR DIFF (cts/s)	MULT	BACKGROUND (gAPI)	CALBRTR ON (gAPI)	CALBRTR (gAPI)
GR	61.18	268.02	206.8	1.015	62.11	272.11	210

GR PRIMARY VERIFICATION SUMMARY

TOOL #: 2812LA 10274382

DATE/TIME PERFORMED: Tue Dec 09 14:07:05 2014

UNIT #: 3885TD Z004271

VERI JIG #: 4702NK WA-612

	BACKGROUND (cts/s)	CALBRTR ON (cts/s)	MULT	BACKGROUND (gAPI)	CALBRTR ON (gAPI)	DIFF. (gAPI)
GR	63.11	273.93	1.015	64.07	278.11	214.04
						200.00 220.00

RPM_PNC_3D PRIMARY CALIBRATION SUMMARY

TOOL: 8283PA 10585555

DATE/TIME PERFORMED: Tue Dec 09 13:08:21 2014

UNIT: 3885TD Z004271

CALIBRATOR: 2437XB 112674

SOURCE: 8281AA 11765054

HOURS: 8281AA 670

	ISS	Mtr Vlt (V)	SS Gain	LS Gain	XLS Gain	EA Temp (degF)	Sync Delay (usec)	RCAL
Raw Data	801712	124	2342	2286	2235	111	7	0.9721
Interpolated	1300000	147	2317	2281	2228			

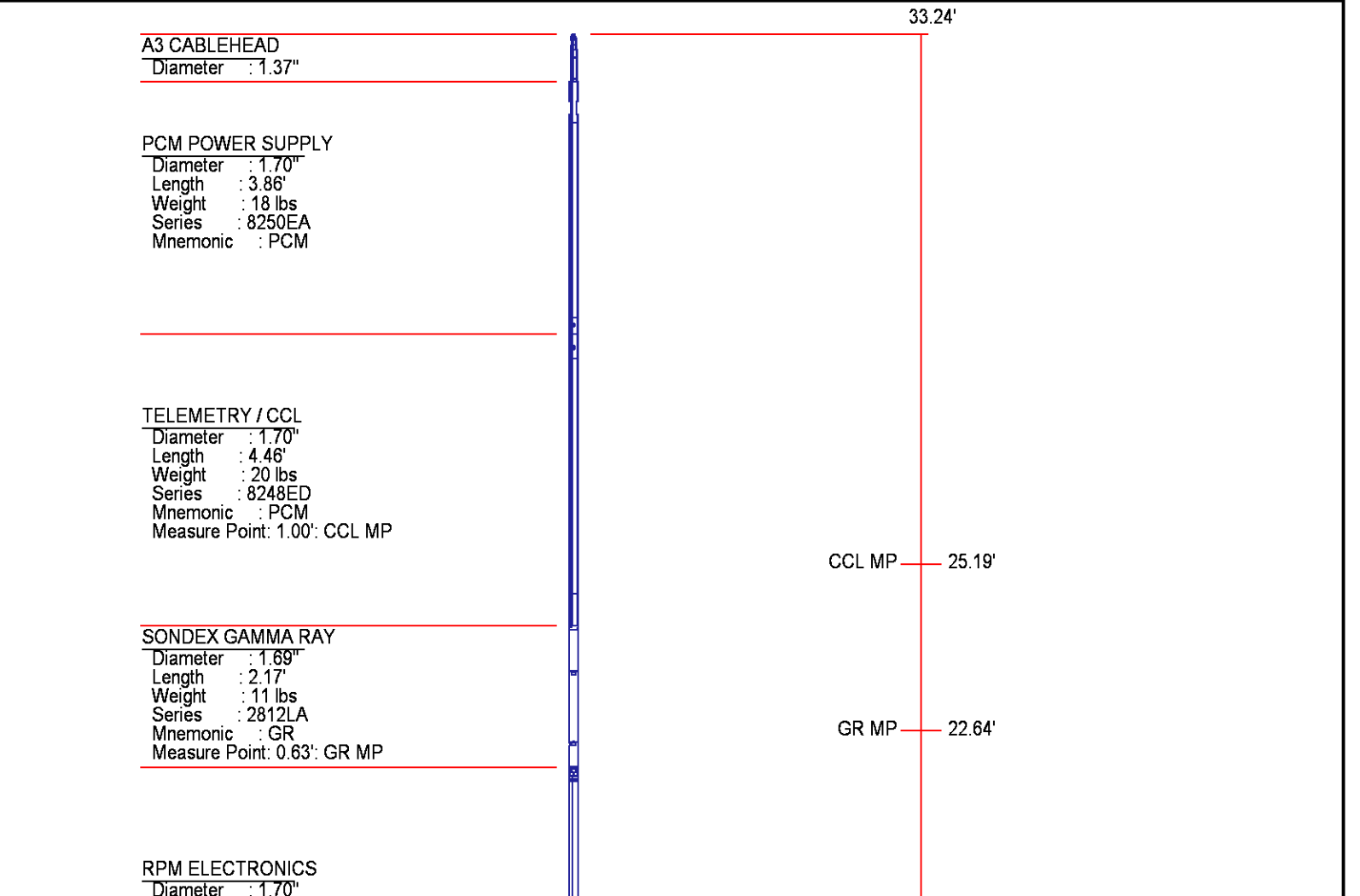
	ISS	BKS	BKL	BKX	SGA1	SDA1	SGA2	SDA2
Raw Data	801712	6404	989	140	26.08	0.15	24.23	0.33
					25.35 26.40	0.00 0.20	23.60 24.80	0.00 0.40

	ISS	ILS	IXS	SS	SS2	LS	CSS	CLS
Raw Data	801712	170477	26574	89502	31836	8242	54189	13205
Fit Quality %		0.952	0.776	0.752	0.741	1.017	0.683	0.990

	ISS	RBOR	RIN	RIN13	RICS	RATO	RTWO	RONE
			ISS/ILS	ISS/IXS	ISS/CSS	SS/LS	SS2/LS	CSS/CLS
Raw Data	801712	1.43	4.70	30.18	14.80	10.86	3.86	4.10
		1.42 1.45	3.55 5.52	22.20 32.70	10.99 16.34	10.06 11.10	3.57 3.95	3.76 4.22
Fit Quality %		0.051	0.164	0.223	0.184	0.174	0.189	0.168
Reduced	1392560	1.43	4.71	30.20	14.80	10.88	3.87	4.11
		1.42 1.45	4.33 5.52	27.60 32.70	13.70 16.34	10.06 11.10	3.57 3.95	3.76 4.22

INSTRUMENT CONFIGURATION

Source File: C:\dat1a\093852\RPM-tdg.meta



Length : 4.48'
Weight : 16 lbs
Series : 8281EA
Mnemonic : RPM

RPM C DETECTOR SECTION

Diameter : 1.70"
Length : 9.40'
Weight : 41 lbs
Series : 8283PA
Mnemonic : RPM
Measure Point: 5.45': XLS DETECTOR
Measure Point: 5.04': LS DETECTOR
Measure Point: 4.79': SS DETECTOR

XLS DETECTOR 13.58'
LS DETECTOR 13.16'
SS DETECTOR 12.91'

RPM SOURCE SECTION

Diameter : 1.70"
Length : 4.70'
Weight : 18 lbs
Series : 8281FA
Mnemonic : RPM

TEMPERATURE / PRESSURE


Diameter : 1.70"
Length : 3.30'
Weight : 13 lbs
Series : 8255XA
Mnemonic : SRPL
Measure Point: 1.52': TEMP MP

TEMP MP 1.65'
PRES MP

BULL PLUG 1 11/16

TOTAL LENGTH: 33.24'
TOTAL WEIGHT: 140 lbs
MAX DIAMETER: 0'1.70'

0.00'

	COMPANY <u>WPX ENERGY</u>		FILE NO:
	WELL <u>WPX GM 433-28</u>		<u>CH093852</u>
	FIELD <u>GRAND VALLEY</u>		API NO:
	COUNTY <u>GARFIELD</u>	STATE <u>COLORADO</u>	<u>05045225080000</u>
LOCATION: SHL: 1503' FSL & 2346' FWL BHL: 1931' FSL & 1615' FEL (NWSE)		ELEVATIONS: KB 5500 FT DF GL 5476 FT	28 6S 96W GM 323-28 PAD H&P 318
SEC <u>28</u> TWP <u>6S</u> RGE <u>96W</u>		DATE <u>2-Jan-2015</u>	