

-06130



Well: Gray B-14  
(A3011)  
Field: Rangley, Co.

### Survey Data

#### Run No.26

Survey Type: T-S-T  
Date: 02/26/2015  
Metered Rate: 2180 B/D  
Measured Rate: 812 B/D  
Desired Rate: N/A  
Service Co: PLS

Surface Temp: 78.8 °F  
BHT: 122.4 °F  
TBG Pressure: 1919 PSI  
CSG Pressure: 0 PSI  
Pick Up: 6594' TDL  
Inj. Fluid: CO<sub>2</sub>

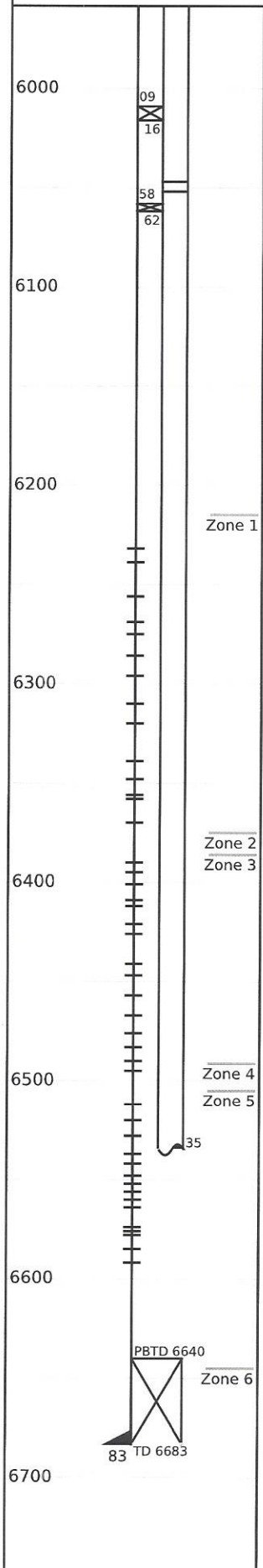
### Remarks

R/A Tracer indicates top perf and packer O.K.

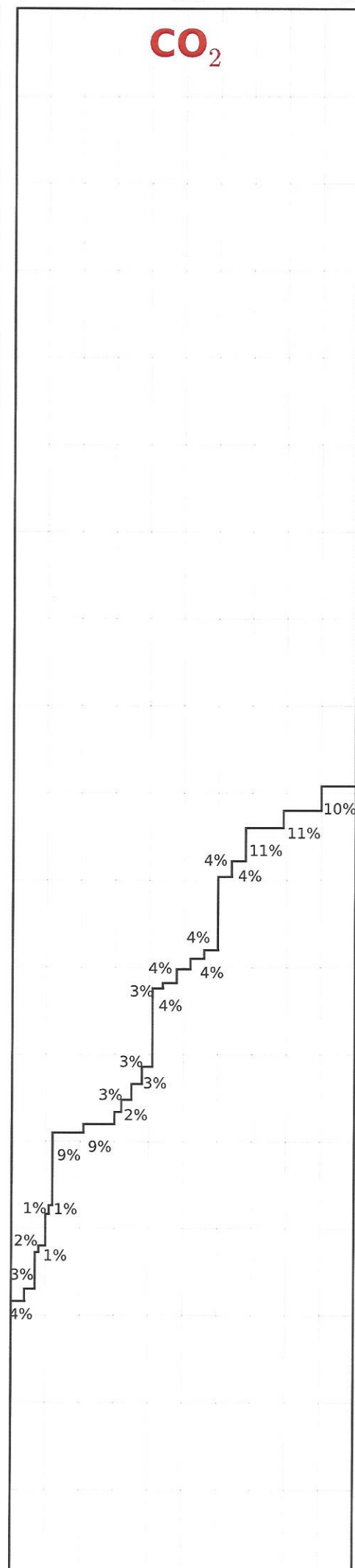
Recorded By: J.R. Hacking

### Mechanical Information

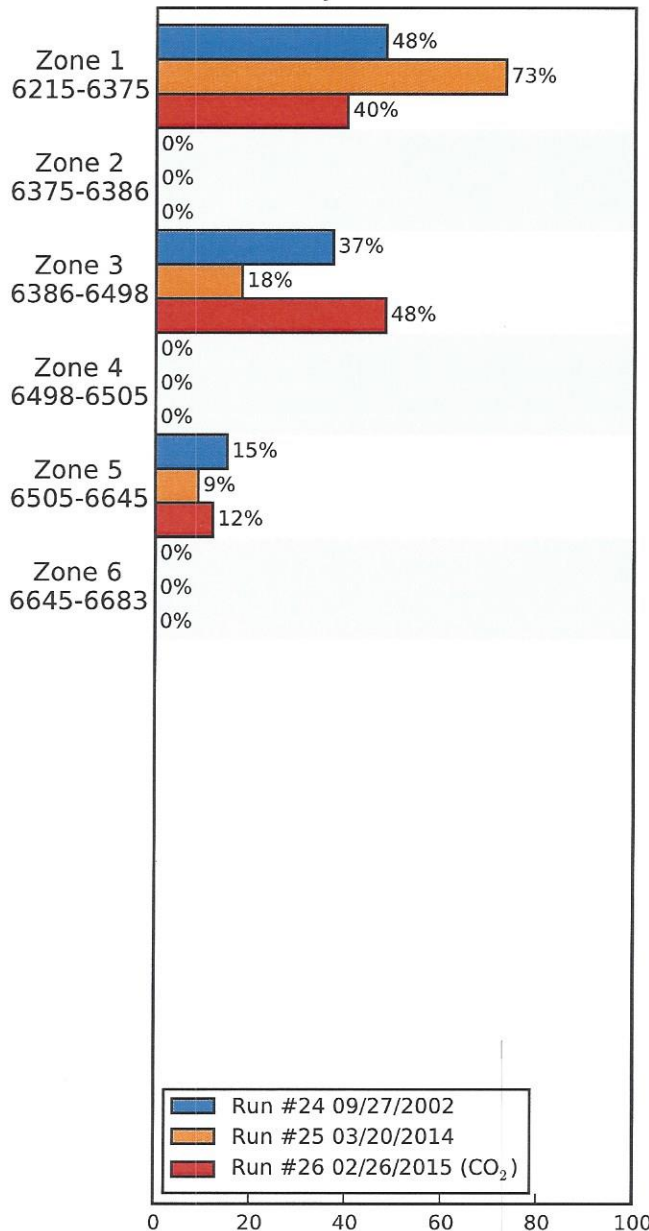
7" 23# Casing 0'-6683'  
P.B.T.D 6640'-6683'  
2-7/8" F.L. Tubing 0'-6009'  
Top Packer 6009'-6016'  
2-7/8" Tubing 6016'-6047'  
On/Off Tool 1.875" "F" 6047'-6052'  
2-7/8" Tubing Sub 6052'-6058'  
Packer 6058'-6062'  
2-3/8" F.G. Tubing 6062'-6535'  
F-15 "A"



0% 50% 100%



### (%) Injected Into Zone



### Average Temperature (°F)

	Run #24 09/27/2002	Run #25 03/20/2014	Run #26 02/26/2015
Surface	99.8	84.3	78.8
6215-6375	--	--	--
6375-6386	--	--	--
6386-6498	--	--	--
6498-6505	--	--	--
6505-6645	--	--	--
TDL (6594)	116.0	120.9	122.4
6645-6683	--	--	--
Rate (B/D)	1500	530	812
Press (PSI)	1600	975	1919