

IMAGE COURTESY OF ESRI/USGS

# LEGEND

○ SITE LOCATION

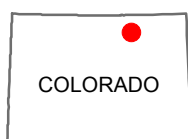
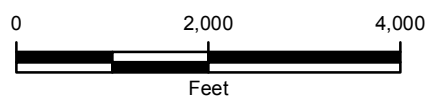
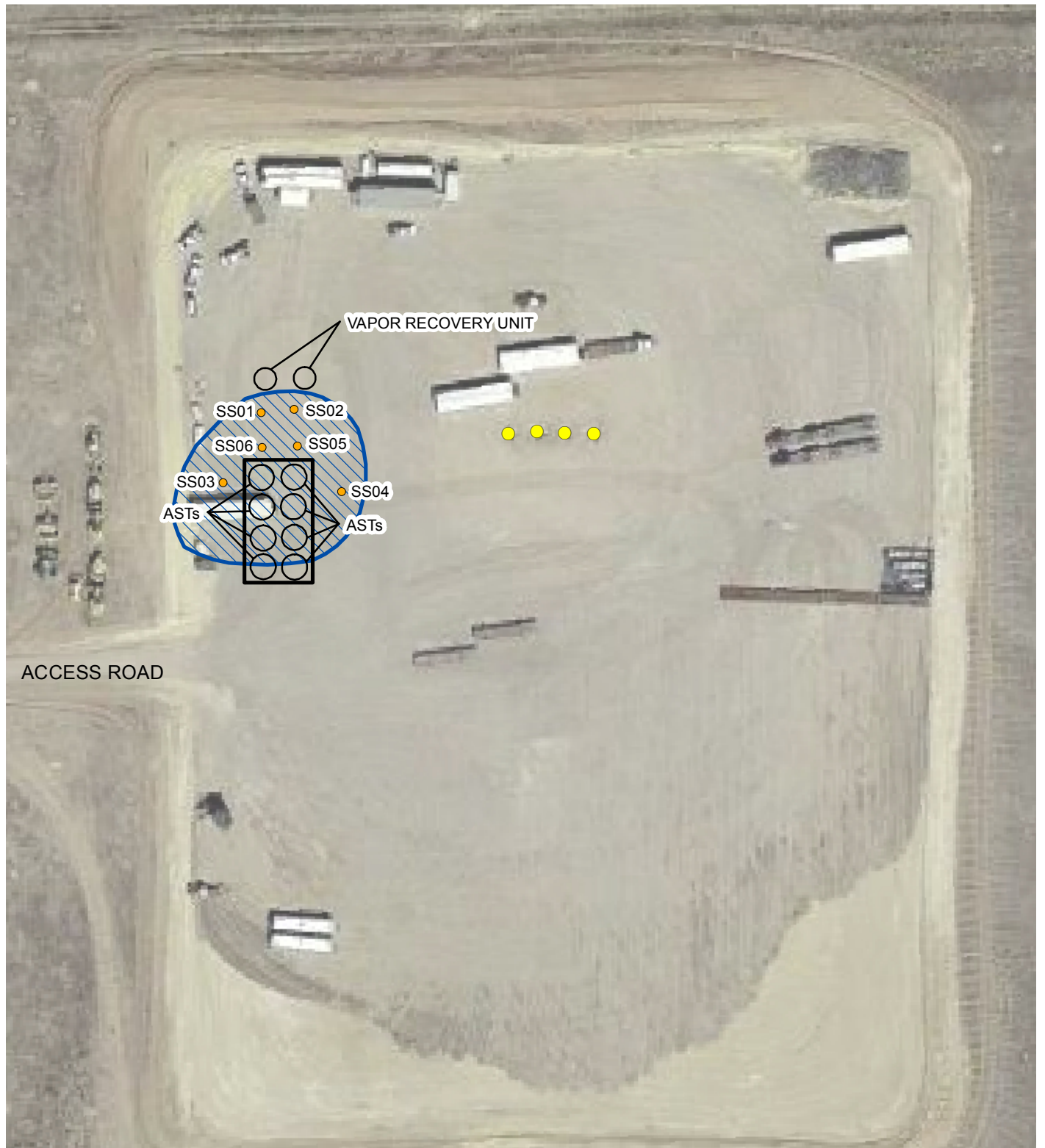


FIGURE 1  
SITE LOCATION MAP  
ROSENBERG 6-61-30 NE  
WELD COUNTY, COLORADO

BILL BARRETT CORPORATION





# LEGEND

- SOIL SAMPLE
- WELLHEAD
- BERM
- APPROXIMATE IMPACT AREA
- AST: ABOVEGROUND STORAGE TANK

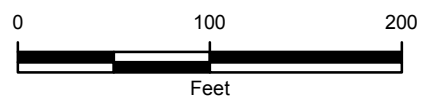


FIGURE 2  
SITE MAP  
ROSENBERG 6-61-30 NE  
WELD COUNTY, COLORADO

BILL BARRETT CORPORATION



TABLE 1

**SOIL ANALYTICAL RESULTS  
ROSENBERG 6-61-30 NE PAD  
WELD COUNTY, COLORADO  
BILL BARRETT CORPORATION**

Sample ID	Depth (feet bgs)	Date Sampled	Benzene (mg/kg)	Toluene (mg/kg)	Ethylbenzene (mg/kg)	Total Xylenes (mg/kg)	GRO (mg/kg)	DRO (mg/kg)	TPH (mg/kg)
SS01	0-0.5	1/16/2015	<0.050	0.107	0.117	0.495	20.0	472	492
SS02	0-0.5	1/16/2015	0.002	0.010	0.016	0.081	4.80	288	292.8
SS03	0-0.5	1/16/2015	<0.002	<0.002	<0.002	0.003	<0.200	<50.0	<50.20
SS04	0-0.5	1/16/2015	<0.002	<0.002	<0.002	<0.002	<0.200	<50.0	<50.20
SS05	0-0.5	1/16/2015	<0.050	0.405	1.15	5.46	361	722	<b>1,083</b>
	0-0.5	2/11/2015	<0.002	0.074	0.167	1.62	17.8	1,060	<b>1,077.8</b>
	0-0.5	2/18/2015	<0.002	<0.002	<0.002	<0.002	0.305	<50.0	0.305
SS06	0-0.5	1/16/2015	<b>12.6</b>	57.4	30.5	100	2,750	20,700	<b>23,450</b>
	0-0.5	2/11/2015	<0.002	<0.002	0.003	0.076	2.98	86.2	89.18
<b>COGCC Table 910-1 Standard</b>			<b>0.17</b>	<b>85</b>	<b>100</b>	<b>175</b>	<b>--</b>	<b>--</b>	<b>500</b>

**Notes:**

mg/kg - milligrams per kilogram

GRO - gasoline range organics

DRO - diesel range organics

NA - not analyzed

TPH - total petroleum hydrocarbons

TPH is the sum of GRO and DRO

COGCC - Colorado Oil and Gas Conservation Commission

-- - not applicable

&lt; indicates result is less than the stated laboratory method reporting limit

Benzene, toluene, ethylbenzene, total xylenes, and GRO analyzed by EPA Method 8260C

DRO analyzed by EPA Modified Method 8015C

