



# Kerr-McGee Oil & Gas Onshore LP

A subsidiary of Anadarko Petroleum Corporation

1099 18<sup>th</sup> Street  
Denver, CO 80202  
720-929-6000

January 26, 2015

Matt Lepore  
Director, Colorado Oil and Gas Conservation Commission  
Department of Natural Resources  
The Chancery Building  
1120 Lincoln Street, Suite 801  
Denver, CO 80203

Re: **30 Day Certification Letter - 318A.e**  
ENGLISH FARMS 38N-8HZ (Doc #400744755)  
Township 1 North, Range 65 West  
Section 8: NENE  
Unit Acreage: 400  
Unit Spacing: 01N-65W-Sec 04 SWSW  
01N-65W-Sec 05 SESE  
01N-65W-Sec 08 E2E2  
01N-65W-Sec 09 W2W2  
Weld County, Colorado

Dear Director Lepore:

Kerr-McGee Oil and Gas Onshore LP ("KMG") hereby certifies that a thirty (30) day notice has been given by certified mail to all mineral owners in the proposed wellbore spacing unit. We have not received any objections to such well location, proposed spacing unit, or additional producing formation. KMG hereby respectfully requests approval of this boundary well.

If you have any questions or issues regarding this permit, please contact Cheryl Light at (720) 929-6461.

Very truly yours,

**Kerr-McGee Oil and Gas Onshore LP**

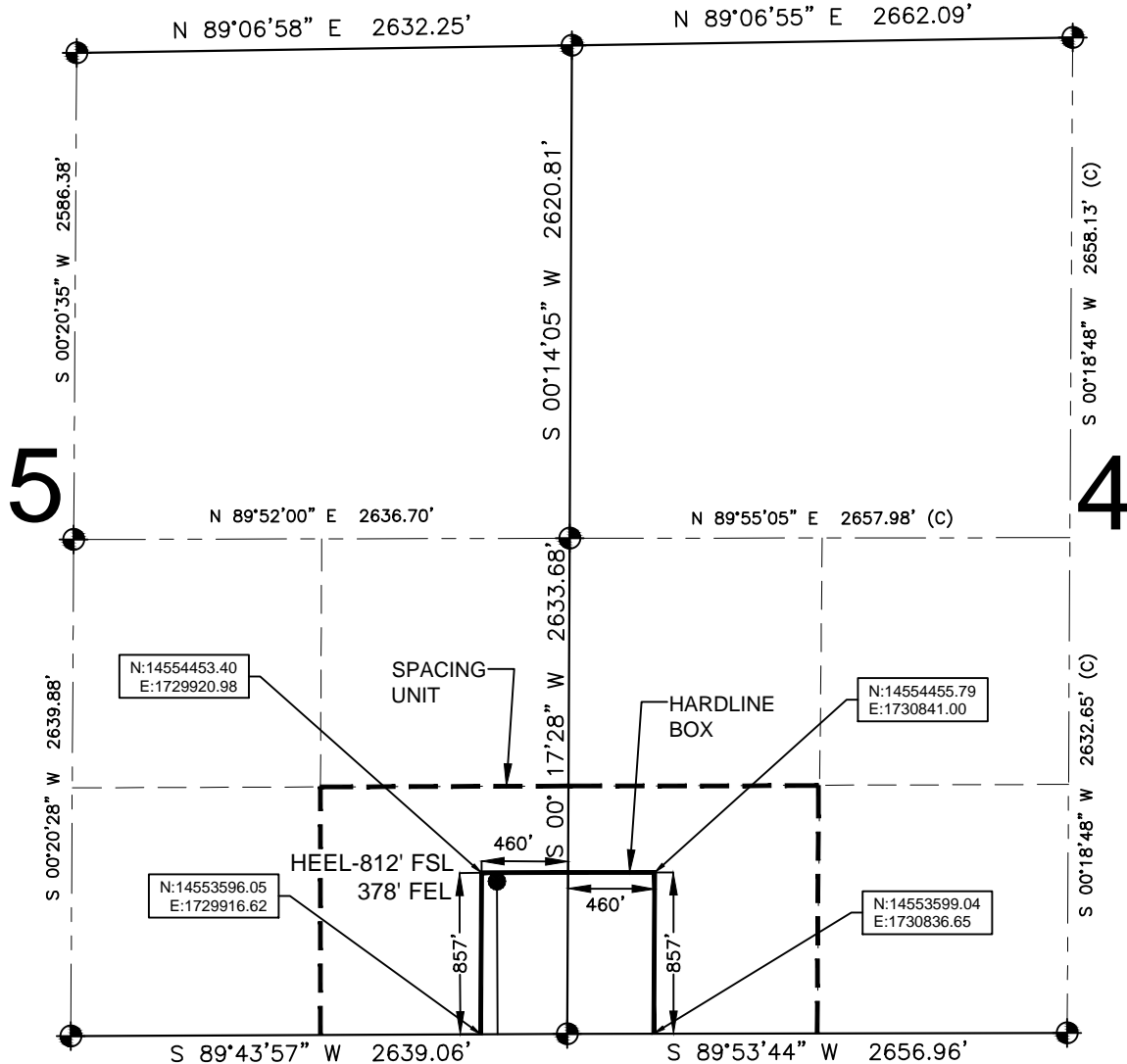
A handwritten signature in black ink, appearing to read 'Mike McConaughy'.

Mike McConaughy  
Sr. Regulatory Analyst

Enclosure

# HARDLINE EXHIBIT: ENGLISH FARMS 38N-8HZ

SECTION 5, TOWNSHIP 1 NORTH, RANGE 65 WEST, 6TH P.M.



## LEGEND

- = EXISTING MONUMENT    ● = BOTTOM HOLE  
● = PROPOSED HEEL    BH = BOTTOM HOLE  
○ = CALCULATED POSITION

## HEEL LOCATION

UTM 13  
LATITUDE= 40.075558°  
LONGITUDE= 104.679755°  
  
LATITUDE= 40°04'32.008"  
LONGITUDE= 104°40'47.118"

## QRT/QRT SECTIONS WITHIN PATH OF THE HARDLINE

SESE, SEC. 5  
SWSW, SEC. 4

## BOTTOM HOLE LOCATION

NAD83  
LATITUDE= 40.060017°  
LONGITUDE= 104.679739°  
  
LATITUDE= 40°03'36.061"  
LONGITUDE= 104°40'47.060"

## AVAILABLE FOOTAGE

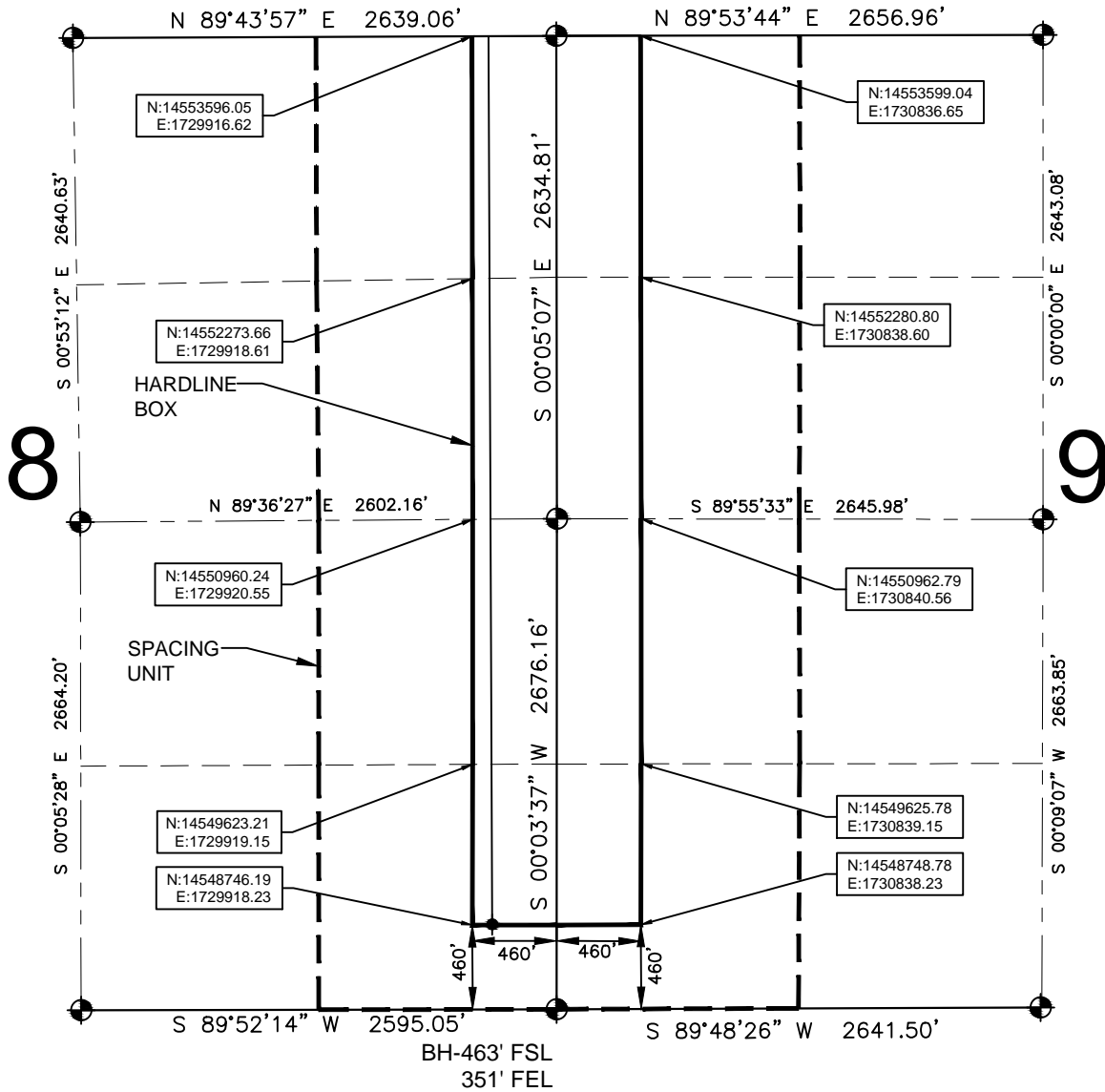
5707'

## NOTES:

- THIS DOCUMENT IS NOT A LAND SURVEY PLAT OR IMPROVEMENT SURVEY PLAT. THIS DOCUMENT DOES NOT REFLECT A FIELD SURVEY. SECTION BREAKDOWN, MONUMENTATION AND HORIZONTAL POSITIONS SHOWN ARE BASED ON THE HEEL AND BOTTOM HOLE LOCATION PROVIDED BY ANADARKO PETROLEUM CORPORATION

# HARDLINE EXHIBIT: ENGLISH FARMS 38N-8HZ

SECTION 8, TOWNSHIP 1 NORTH, RANGE 65 WEST, 6TH P.M.



## LEGEND

- = EXISTING MONUMENT
- = PROPOSED HEEL
- = CALCULATED POSITION
- ⬮ = BOTTOM HOLE
- BH = BOTTOM HOLE

## QRT/QRT SECTIONS WITHIN PATH OF THE HARDLINE

- |              |              |
|--------------|--------------|
| NENE, SEC. 8 | NWNW, SEC. 9 |
| SENE, SEC. 8 | SWNW, SEC. 9 |
| NESE, SEC. 8 | NWSW, SEC. 9 |
| SESE, SEC. 8 | SWSW, SEC. 9 |

## NOTES:

- THIS DOCUMENT IS NOT A LAND SURVEY PLAT OR IMPROVEMENT SURVEY PLAT. THIS DOCUMENT DOES NOT REFLECT A FIELD SURVEY. SECTION BREAKDOWN, MONUMENTATION AND HORIZONTAL POSITIONS SHOWN ARE BASED ON THE HEEL AND BOTTOM HOLE LOCATION PROVIDED BY ANADARKO PETROLEUM CORPORATION