

# **EXTRACTION OIL & GAS**

**WELD COUNTY, COLORADO (NAD 83)**

**NW NE SEC. 5 T5N R65W 6th P.M.**

**DT-FORBES C6-5-6**

**ORIGINAL WELLBORE**

**17 November, 2014**

**Plan: PROPOSAL #2**

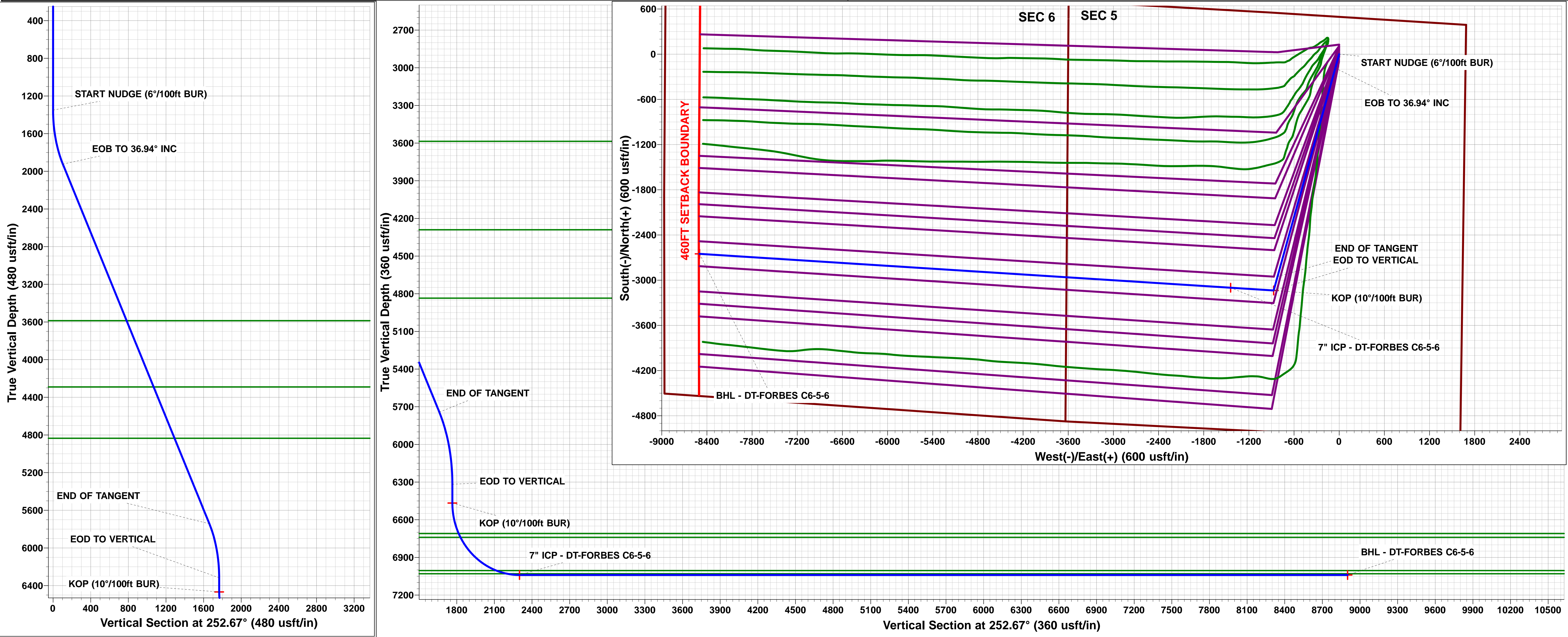
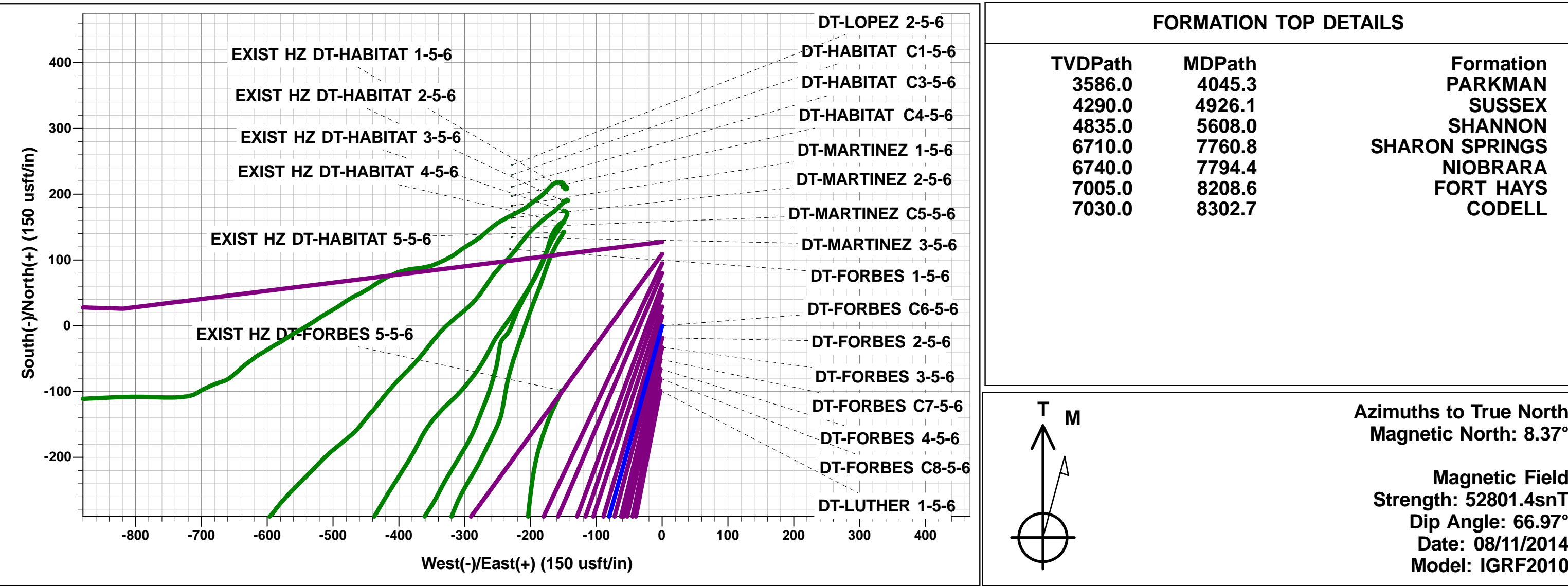




Project: WELD COUNTY, COLORADO (NAD 83)  
Site: NW NE SEC. 5 T5N R65W 6th P.M.  
Well: DT-FORBES C6-5-6  
Wellbore: ORIGINAL WELLBORE  
Design: PROPOSAL #2

ANNOTATIONS									
TVD	MD	Inc	Azi	+N/-S	+E/-W	VSect	Dep	Annotation	
1350.0	1350.0	0.00	0.00	0.0	0.0	0.0	0.0	START NUDDGE (6°/100ft BUR)	
1923.9	1965.7	36.94	195.51	-184.7	-51.3	103.9	191.7	EOB TO 36.94° INC	
5743.1	6744.2	36.94	195.51	-2952.1	-819.1	1661.1	3063.6	END OF TANGENT	
6317.0	7359.9	0.00	0.00	-3136.8	-870.4	1765.0	3255.3	EOD TO VERTICAL	
6467.0	7509.9	0.00	0.00	-3136.8	-870.4	1765.0	3255.3	KOP (10°/100ft BUR)	
7040.0	8409.9	90.00	273.66	-3100.3	-1442.2	2300.0	3828.3	7" ICP - DT-FORBES C6-5-6	
7040.0	15479.0	90.00	273.64	-2650.7	-8497.0	8900.8	10897.4	BHL - DT-FORBES C6-5-6	

WELLBORE TARGET DETAILS (LAT/LONG)					
Name	TVD	+N/-S	+E/-W	Latitude	Longitude
KOP - DT-FORBES C6-5-6	6467.0	-3136.8	-870.4	40.426530	-104.686856
7" ICP - DT-FORBES C6-5-6	7040.0	-3100.3	-1442.2	40.426630	-104.688910
BHL - DT-FORBES C6-5-6	7040.0	-2650.7	-8497.0	40.427860	-104.714250



# Planning Report



<b>Database:</b>	EDM 5000.1 Single User Db	<b>Local Co-ordinate Reference:</b>	Well DT-FORBES C6-5-6
<b>Company:</b>	EXTRACTION OIL & GAS	<b>TVD Reference:</b>	KB-EST @ 4657.0usft (SAV 802)
<b>Project:</b>	WELD COUNTY, COLORADO (NAD 83)	<b>MD Reference:</b>	KB-EST @ 4657.0usft (SAV 802)
<b>Site:</b>	NW NE SEC. 5 T5N R65W 6th P.M.	<b>North Reference:</b>	True
<b>Well:</b>	DT-FORBES C6-5-6	<b>Survey Calculation Method:</b>	Minimum Curvature
<b>Wellbore:</b>	ORIGINAL WELLBORE		
<b>Design:</b>	PROPOSAL #2		

<b>Project</b>	WELD COUNTY, COLORADO (NAD 83)		
<b>Map System:</b>	US State Plane 1983	<b>System Datum:</b>	Mean Sea Level
<b>Geo Datum:</b>	North American Datum 1983		
<b>Map Zone:</b>	Colorado Northern Zone		Using geodetic scale factor

<b>Site</b>	NW NE SEC. 5 T5N R65W 6th P.M.		
<b>Site Position:</b>		<b>Northing:</b>	1,402,409.16usft
<b>From:</b>	Lat/Long	<b>Easting:</b>	3,226,987.53usft
<b>Position Uncertainty:</b>	0.0 usft	<b>Slot Radius:</b>	1.10000ft
		<b>Latitude:</b>	40.435150
		<b>Longitude:</b>	-104.684560
		<b>Grid Convergence:</b>	0.53 °

<b>Well</b>	DT-FORBES C6-5-6		
<b>Well Position</b>	<b>+N/-S</b>	-3.7 usft	<b>Northing:</b>
	<b>+E/-W</b>	231.1 usft	<b>Easting:</b>
<b>Position Uncertainty</b>		0.0 usft	<b>Wellhead Elevation:</b>
			<b>Latitude:</b>
			<b>Longitude:</b>
			<b>Ground Level:</b>

<b>Wellbore</b>	ORIGINAL WELLBORE				
<b>Magnetics</b>	<b>Model Name</b>	<b>Sample Date</b>	<b>Declination (°)</b>	<b>Dip Angle (°)</b>	<b>Field Strength (nT)</b>
	IGRF2010	08/11/2014	8.37	66.97	52,801

<b>Design</b>	PROPOSAL #2			
<b>Audit Notes:</b>				
<b>Version:</b>	<b>Phase:</b>	PROTOTYPE	<b>Tie On Depth:</b>	0.0
<b>Vertical Section:</b>	<b>Depth From (TVD) (usft)</b>	<b>+N/-S (usft)</b>	<b>+E/-W (usft)</b>	<b>Direction (°)</b>
	0.0	0.0	0.0	252.67

<b>Plan Sections</b>											
MD (usft)	Inc (°)	Azi (°)	Vertical Depth	SS (usft)	+N/-S (usft)	+E/-W (usft)	Dogleg Rate (°/100usf)	Build Rate (°/100usf)	Turn Rate (°/100usf)	TFO (°)	Target
0.0	0.00	0.00	0.0	-4,657.0	0.0	0.0	0.00	0.00	0.00	0.00	
1,350.0	0.00	0.00	1,350.0	-3,307.0	0.0	0.0	0.00	0.00	0.00	0.00	
1,965.7	36.94	195.51	1,923.9	-2,733.1	-184.7	-51.3	6.00	6.00	0.00	195.51	
6,744.2	36.94	195.51	5,743.1	1,086.1	-2,952.1	-819.1	0.00	0.00	0.00	0.00	
7,359.9	0.00	0.00	6,317.0	1,660.0	-3,136.8	-870.4	6.00	-6.00	0.00	180.00	
7,509.9	0.00	0.00	6,467.0	1,810.0	-3,136.8	-870.4	0.00	0.00	0.00	0.00	KOP - DT-FORBES
8,409.9	90.00	273.66	7,040.0	2,383.0	-3,100.3	-1,442.2	10.00	10.00	-9.59	273.66	7" ICP - DT-FORBES
15,479.0	90.00	273.64	7,040.0	2,383.0	-2,650.7	-8,497.0	0.00	0.00	0.00	-65.05	BHL - DT-FORBES

# Planning Report



<b>Database:</b>	EDM 5000.1 Single User Db	<b>Local Co-ordinate Reference:</b>	Well DT-FORBES C6-5-6
<b>Company:</b>	EXTRACTION OIL & GAS	<b>TVD Reference:</b>	KB-EST @ 4657.0usft (SAV 802)
<b>Project:</b>	WELD COUNTY, COLORADO (NAD 83)	<b>MD Reference:</b>	KB-EST @ 4657.0usft (SAV 802)
<b>Site:</b>	NW NE SEC. 5 T5N R65W 6th P.M.	<b>North Reference:</b>	True
<b>Well:</b>	DT-FORBES C6-5-6	<b>Survey Calculation Method:</b>	Minimum Curvature
<b>Wellbore:</b>	ORIGINAL WELLBORE		
<b>Design:</b>	PROPOSAL #2		

## Planned Survey

MD (usft)	Inc (°)	Azi (°)	TVD (usft)	SS (usft)	+N/-S (usft)	+E/-W (usft)	Vertical Section (usft)	Dogleg Rate (°/100usft)	Build Rate (°/100usft)	Turn Rate (°/100usft)
0.0	0.00	0.00	0.0	4,657.00	0.0	0.0	0.0	0.00	0.00	0.00
100.0	0.00	0.00	100.0	4,557.00	0.0	0.0	0.0	0.00	0.00	0.00
200.0	0.00	0.00	200.0	4,457.00	0.0	0.0	0.0	0.00	0.00	0.00
300.0	0.00	0.00	300.0	4,357.00	0.0	0.0	0.0	0.00	0.00	0.00
400.0	0.00	0.00	400.0	4,257.00	0.0	0.0	0.0	0.00	0.00	0.00
500.0	0.00	0.00	500.0	4,157.00	0.0	0.0	0.0	0.00	0.00	0.00
600.0	0.00	0.00	600.0	4,057.00	0.0	0.0	0.0	0.00	0.00	0.00
700.0	0.00	0.00	700.0	3,957.00	0.0	0.0	0.0	0.00	0.00	0.00
800.0	0.00	0.00	800.0	3,857.00	0.0	0.0	0.0	0.00	0.00	0.00
900.0	0.00	0.00	900.0	3,757.00	0.0	0.0	0.0	0.00	0.00	0.00
1,000.0	0.00	0.00	1,000.0	3,657.00	0.0	0.0	0.0	0.00	0.00	0.00
1,100.0	0.00	0.00	1,100.0	3,557.00	0.0	0.0	0.0	0.00	0.00	0.00
1,200.0	0.00	0.00	1,200.0	3,457.00	0.0	0.0	0.0	0.00	0.00	0.00
1,300.0	0.00	0.00	1,300.0	3,357.00	0.0	0.0	0.0	0.00	0.00	0.00
<b>START NUDGE (6°/100ft BUR)</b>										
1,350.0	0.00	0.00	1,350.0	3,307.00	0.0	0.0	0.0	0.00	0.00	0.00
1,400.0	3.00	195.51	1,400.0	3,257.02	-1.3	-0.3	0.7	6.00	6.00	0.00
1,500.0	9.00	195.51	1,499.4	3,157.62	-11.3	-3.1	6.4	6.00	6.00	0.00
1,600.0	15.00	195.51	1,597.2	3,059.85	-31.4	-8.7	17.6	6.00	6.00	0.00
1,700.0	21.00	195.51	1,692.2	2,964.78	-61.1	-17.0	34.4	6.00	6.00	0.00
1,800.0	27.00	195.51	1,783.5	2,873.47	-100.3	-27.8	56.4	6.00	6.00	0.00
1,900.0	33.00	195.51	1,870.1	2,786.91	-148.4	-41.2	83.5	6.00	6.00	0.00
<b>EOB TO 36.94° INC</b>										
1,965.7	36.94	195.51	1,923.9	2,733.08	-184.7	-51.3	103.9	6.00	6.00	0.00
2,000.0	36.94	195.51	1,951.3	2,705.67	-204.6	-56.8	115.1	0.00	0.00	0.00
2,100.0	36.94	195.51	2,031.3	2,625.74	-262.5	-72.8	147.7	0.00	0.00	0.00
2,200.0	36.94	195.51	2,111.2	2,545.82	-320.4	-88.9	180.3	0.00	0.00	0.00
2,300.0	36.94	195.51	2,191.1	2,465.89	-378.3	-105.0	212.9	0.00	0.00	0.00
2,400.0	36.94	195.51	2,271.0	2,385.97	-436.2	-121.0	245.5	0.00	0.00	0.00
2,500.0	36.94	195.51	2,351.0	2,306.04	-494.2	-137.1	278.1	0.00	0.00	0.00
2,600.0	36.94	195.51	2,430.9	2,226.12	-552.1	-153.2	310.6	0.00	0.00	0.00
2,700.0	36.94	195.51	2,510.8	2,146.20	-610.0	-169.3	343.2	0.00	0.00	0.00
2,800.0	36.94	195.51	2,590.7	2,066.27	-667.9	-185.3	375.8	0.00	0.00	0.00
2,900.0	36.94	195.51	2,670.7	1,986.35	-725.8	-201.4	408.4	0.00	0.00	0.00
3,000.0	36.94	195.51	2,750.6	1,906.42	-783.7	-217.5	441.0	0.00	0.00	0.00
3,100.0	36.94	195.51	2,830.5	1,826.50	-841.6	-233.5	473.6	0.00	0.00	0.00
3,200.0	36.94	195.51	2,910.4	1,746.57	-899.5	-249.6	506.2	0.00	0.00	0.00
3,300.0	36.94	195.51	2,990.4	1,666.65	-957.5	-265.7	538.8	0.00	0.00	0.00
3,400.0	36.94	195.51	3,070.3	1,586.72	-1,015.4	-281.7	571.3	0.00	0.00	0.00
3,500.0	36.94	195.51	3,150.2	1,506.80	-1,073.3	-297.8	603.9	0.00	0.00	0.00
3,600.0	36.94	195.51	3,230.1	1,426.88	-1,131.2	-313.9	636.5	0.00	0.00	0.00
3,700.0	36.94	195.51	3,310.0	1,346.95	-1,189.1	-329.9	669.1	0.00	0.00	0.00
3,800.0	36.94	195.51	3,390.0	1,267.03	-1,247.0	-346.0	701.7	0.00	0.00	0.00
3,900.0	36.94	195.51	3,469.9	1,187.10	-1,304.9	-362.1	734.3	0.00	0.00	0.00
4,000.0	36.94	195.51	3,549.8	1,107.18	-1,362.8	-378.2	766.9	0.00	0.00	0.00
<b>PARKMAN</b>										
4,045.3	36.94	195.51	3,586.0	1,071.00	-1,389.1	-385.4	781.6	0.00	0.00	0.00
4,100.0	36.94	195.51	3,629.7	1,027.25	-1,420.8	-394.2	799.4	0.00	0.00	0.00
4,200.0	36.94	195.51	3,709.7	947.33	-1,478.7	-410.3	832.0	0.00	0.00	0.00
4,300.0	36.94	195.51	3,789.6	867.40	-1,536.6	-426.4	864.6	0.00	0.00	0.00
4,400.0	36.94	195.51	3,869.5	787.48	-1,594.5	-442.4	897.2	0.00	0.00	0.00
4,500.0	36.94	195.51	3,949.4	707.56	-1,652.4	-458.5	929.8	0.00	0.00	0.00
4,600.0	36.94	195.51	4,029.4	627.63	-1,710.3	-474.6	962.4	0.00	0.00	0.00



## Planning Report



<b>Database:</b>	EDM 5000.1 Single User Db	<b>Local Co-ordinate Reference:</b>	Well DT-FORBES C6-5-6
<b>Company:</b>	EXTRACTION OIL & GAS	<b>TVD Reference:</b>	KB-EST @ 4657.0usft (SAV 802)
<b>Project:</b>	WELD COUNTY, COLORADO (NAD 83)	<b>MD Reference:</b>	KB-EST @ 4657.0usft (SAV 802)
<b>Site:</b>	NW NE SEC. 5 T5N R65W 6th P.M.	<b>North Reference:</b>	True
<b>Well:</b>	DT-FORBES C6-5-6	<b>Survey Calculation Method:</b>	Minimum Curvature
<b>Wellbore:</b>	ORIGINAL WELLBORE		
<b>Design:</b>	PROPOSAL #2		

## Planned Survey

MD (usft)	Inc (°)	Azi (°)	TVD (usft)	SS (usft)	+N/-S (usft)	+E/-W (usft)	Vertical Section (usft)	Dogleg Rate (°/100usft)	Build Rate (°/100usft)	Turn Rate (°/100usft)
4,700.0	36.94	195.51	4,109.3	547.71	-1,768.2	-490.6	995.0	0.00	0.00	0.00
4,800.0	36.94	195.51	4,189.2	467.78	-1,826.1	-506.7	1,027.6	0.00	0.00	0.00
4,900.0	36.94	195.51	4,269.1	387.86	-1,884.1	-522.8	1,060.1	0.00	0.00	0.00
<b>SUSSEX</b>										
<b>4,926.1</b>	<b>36.94</b>	<b>195.51</b>	<b>4,290.0</b>	<b>367.00</b>	<b>-1,899.2</b>	<b>-527.0</b>	<b>1,068.6</b>	<b>0.00</b>	<b>0.00</b>	<b>0.00</b>
5,000.0	36.94	195.51	4,349.1	307.93	-1,942.0	-538.8	1,092.7	0.00	0.00	0.00
5,100.0	36.94	195.51	4,429.0	228.01	-1,999.9	-554.9	1,125.3	0.00	0.00	0.00
5,200.0	36.94	195.51	4,508.9	148.08	-2,057.8	-571.0	1,157.9	0.00	0.00	0.00
5,300.0	36.94	195.51	4,588.8	68.16	-2,115.7	-587.1	1,190.5	0.00	0.00	0.00
5,400.0	36.94	195.51	4,668.8	-11.76	-2,173.6	-603.1	1,223.1	0.00	0.00	0.00
5,500.0	36.94	195.51	4,748.7	-91.69	-2,231.5	-619.2	1,255.7	0.00	0.00	0.00
5,600.0	36.94	195.51	4,828.6	-171.61	-2,289.4	-635.3	1,288.3	0.00	0.00	0.00
<b>SHANNON</b>										
<b>5,608.0</b>	<b>36.94</b>	<b>195.51</b>	<b>4,835.0</b>	<b>-178.00</b>	<b>-2,294.1</b>	<b>-636.5</b>	<b>1,290.9</b>	<b>0.00</b>	<b>0.00</b>	<b>0.00</b>
5,700.0	36.94	195.51	4,908.5	-251.54	-2,347.4	-651.3	1,320.8	0.00	0.00	0.00
5,800.0	36.94	195.51	4,988.5	-331.46	-2,405.3	-667.4	1,353.4	0.00	0.00	0.00
5,900.0	36.94	195.51	5,068.4	-411.39	-2,463.2	-683.5	1,386.0	0.00	0.00	0.00
6,000.0	36.94	195.51	5,148.3	-491.31	-2,521.1	-699.5	1,418.6	0.00	0.00	0.00
6,100.0	36.94	195.51	5,228.2	-571.24	-2,579.0	-715.6	1,451.2	0.00	0.00	0.00
6,200.0	36.94	195.51	5,308.2	-651.16	-2,636.9	-731.7	1,483.8	0.00	0.00	0.00
6,300.0	36.94	195.51	5,388.1	-731.08	-2,694.8	-747.7	1,516.4	0.00	0.00	0.00
6,400.0	36.94	195.51	5,468.0	-811.01	-2,752.7	-763.8	1,548.9	0.00	0.00	0.00
6,500.0	36.94	195.51	5,547.9	-890.93	-2,810.7	-779.9	1,581.5	0.00	0.00	0.00
6,600.0	36.94	195.51	5,627.9	-970.86	-2,868.6	-796.0	1,614.1	0.00	0.00	0.00
6,700.0	36.94	195.51	5,707.8	-1,050.78	-2,926.5	-812.0	1,646.7	0.00	0.00	0.00
<b>END OF TANGENT</b>										
<b>6,744.2</b>	<b>36.94</b>	<b>195.51</b>	<b>5,743.1</b>	<b>-1,086.11</b>	<b>-2,952.1</b>	<b>-819.1</b>	<b>1,661.1</b>	<b>0.00</b>	<b>0.00</b>	<b>0.00</b>
6,800.0	33.59	195.51	5,788.7	-1,131.66	-2,983.1	-827.7	1,678.6	6.00	-6.00	0.00
6,900.0	27.59	195.51	5,874.7	-1,217.70	-3,032.1	-841.3	1,706.2	6.00	-6.00	0.00
7,000.0	21.59	195.51	5,965.6	-1,308.59	-3,072.2	-852.5	1,728.7	6.00	-6.00	0.00
7,100.0	15.59	195.51	6,060.3	-1,403.33	-3,102.9	-861.0	1,746.0	6.00	-6.00	0.00
7,200.0	9.59	195.51	6,157.9	-1,500.88	-3,123.9	-866.8	1,757.8	6.00	-6.00	0.00
7,300.0	3.59	195.51	6,257.2	-1,600.17	-3,135.0	-869.9	1,764.0	6.00	-6.00	0.00
<b>EOD TO VERTICAL</b>										
<b>7,359.9</b>	<b>0.00</b>	<b>0.00</b>	<b>6,317.0</b>	<b>-1,660.03</b>	<b>-3,136.8</b>	<b>-870.4</b>	<b>1,765.0</b>	<b>6.00</b>	<b>-6.00</b>	<b>0.00</b>
7,400.0	0.00	0.00	6,357.1	-1,700.13	-3,136.8	-870.4	1,765.0	0.00	0.00	0.00
7,500.0	0.00	0.00	6,457.1	-1,800.13	-3,136.8	-870.4	1,765.0	0.00	0.00	0.00
<b>KOP (10°/100ft BUR)</b>										
<b>7,509.9</b>	<b>0.00</b>	<b>0.00</b>	<b>6,467.0</b>	<b>-1,810.03</b>	<b>-3,136.8</b>	<b>-870.4</b>	<b>1,765.0</b>	<b>0.00</b>	<b>0.00</b>	<b>0.00</b>
7,600.0	9.01	273.66	6,556.8	-1,899.76	-3,136.3	-877.4	1,771.7	10.00	10.00	0.00
7,700.0	19.01	273.66	6,653.7	-1,996.66	-3,134.8	-901.6	1,794.2	10.00	10.00	0.00
<b>SHARON SPRINGS</b>										
<b>7,760.8</b>	<b>25.09</b>	<b>273.66</b>	<b>6,710.0</b>	<b>-2,053.00</b>	<b>-3,133.3</b>	<b>-924.3</b>	<b>1,815.5</b>	<b>10.00</b>	<b>10.00</b>	<b>0.00</b>
<b>NIORARA</b>										
<b>7,794.4</b>	<b>28.45</b>	<b>273.66</b>	<b>6,740.0</b>	<b>-2,083.00</b>	<b>-3,132.4</b>	<b>-939.5</b>	<b>1,829.7</b>	<b>10.00</b>	<b>10.00</b>	<b>0.00</b>
7,800.0	29.01	273.66	6,744.9	-2,087.89	-3,132.2	-942.1	1,832.2	10.00	10.00	0.00
7,900.0	39.01	273.66	6,827.7	-2,170.68	-3,128.6	-997.9	1,884.3	10.00	10.00	0.00
8,000.0	49.01	273.66	6,899.5	-2,242.51	-3,124.2	-1,067.1	1,949.1	10.00	10.00	0.00
8,100.0	59.01	273.66	6,958.2	-2,301.20	-3,119.1	-1,147.8	2,024.6	10.00	10.00	0.00
8,200.0	69.01	273.66	7,002.0	-2,344.97	-3,113.3	-1,237.4	2,108.4	10.00	10.00	0.00
<b>FORT HAYS</b>										
<b>8,208.6</b>	<b>69.87</b>	<b>273.66</b>	<b>7,005.0</b>	<b>-2,348.00</b>	<b>-3,112.8</b>	<b>-1,245.4</b>	<b>2,115.9</b>	<b>10.00</b>	<b>10.00</b>	<b>0.00</b>
8,300.0	79.01	273.66	7,029.5	-2,372.49	-3,107.2	-1,333.2	2,198.0	10.00	10.00	0.00

<b>Database:</b>	EDM 5000.1 Single User Db	<b>Local Co-ordinate Reference:</b>	Well DT-FORBES C6-5-6
<b>Company:</b>	EXTRACTION OIL & GAS	<b>TVD Reference:</b>	KB-EST @ 4657.0usft (SAV 802)
<b>Project:</b>	WELD COUNTY, COLORADO (NAD 83)	<b>MD Reference:</b>	KB-EST @ 4657.0usft (SAV 802)
<b>Site:</b>	NW NE SEC. 5 T5N R65W 6th P.M.	<b>North Reference:</b>	True
<b>Well:</b>	DT-FORBES C6-5-6	<b>Survey Calculation Method:</b>	Minimum Curvature
<b>Wellbore:</b>	ORIGINAL WELLBORE		
<b>Design:</b>	PROPOSAL #2		

Planned Survey										
MD (usft)	Inc (°)	Azi (°)	TVD (usft)	SS (usft)	+N/-S (usft)	+E/-W (usft)	Vertical Section (usft)	Dogleg Rate (°/100usft)	Build Rate (°/100usft)	Turn Rate (°/100usft)
<b>CODELL</b>										
8,302.7	79.28	273.66	7,030.0	-2,373.00	-3,107.0	-1,335.8	2,200.5	10.00	10.00	0.00
8,400.0	89.01	273.66	7,039.9	-2,382.91	-3,100.9	-1,432.3	2,290.8	10.00	10.00	0.00
<b>7" ICP - DT-FORBES C6-5-6</b>										
8,409.9	90.00	273.66	7,040.0	-2,383.00	-3,100.3	-1,442.2	2,300.0	9.99	9.99	0.00
8,500.0	90.00	273.66	7,040.0	-2,383.01	-3,094.5	-1,532.1	2,384.2	0.00	0.00	0.00
8,600.0	90.00	273.65	7,040.0	-2,383.01	-3,088.1	-1,631.9	2,477.5	0.00	0.00	0.00
8,700.0	90.00	273.65	7,040.0	-2,383.02	-3,081.8	-1,731.7	2,570.9	0.00	0.00	0.00
8,800.0	90.00	273.65	7,040.0	-2,383.03	-3,075.4	-1,831.5	2,664.3	0.00	0.00	0.00
8,900.0	90.00	273.65	7,040.0	-2,383.04	-3,069.0	-1,931.3	2,757.6	0.00	0.00	0.00
9,000.0	90.00	273.65	7,040.0	-2,383.04	-3,062.6	-2,031.1	2,851.0	0.00	0.00	0.00
9,100.0	90.00	273.65	7,040.0	-2,383.05	-3,056.3	-2,130.9	2,944.4	0.00	0.00	0.00
9,200.0	90.00	273.65	7,040.1	-2,383.05	-3,049.9	-2,230.7	3,037.7	0.00	0.00	0.00
9,300.0	90.00	273.65	7,040.1	-2,383.06	-3,043.5	-2,330.5	3,131.1	0.00	0.00	0.00
9,400.0	90.00	273.65	7,040.1	-2,383.07	-3,037.2	-2,430.3	3,224.5	0.00	0.00	0.00
9,500.0	90.00	273.65	7,040.1	-2,383.07	-3,030.8	-2,530.1	3,317.9	0.00	0.00	0.00
9,600.0	90.00	273.65	7,040.1	-2,383.08	-3,024.4	-2,629.9	3,411.2	0.00	0.00	0.00
9,700.0	90.00	273.65	7,040.1	-2,383.08	-3,018.0	-2,729.7	3,504.6	0.00	0.00	0.00
9,800.0	90.00	273.65	7,040.1	-2,383.09	-3,011.7	-2,829.5	3,598.0	0.00	0.00	0.00
9,900.0	90.00	273.65	7,040.1	-2,383.09	-3,005.3	-2,929.3	3,691.3	0.00	0.00	0.00
10,000.0	90.00	273.65	7,040.1	-2,383.10	-2,998.9	-3,029.1	3,784.7	0.00	0.00	0.00
10,100.0	90.00	273.65	7,040.1	-2,383.10	-2,992.6	-3,128.9	3,878.1	0.00	0.00	0.00
10,200.0	90.00	273.65	7,040.1	-2,383.10	-2,986.2	-3,228.6	3,971.5	0.00	0.00	0.00
10,300.0	90.00	273.65	7,040.1	-2,383.11	-2,979.8	-3,328.4	4,064.8	0.00	0.00	0.00
10,400.0	90.00	273.65	7,040.1	-2,383.11	-2,973.5	-3,428.2	4,158.2	0.00	0.00	0.00
10,500.0	90.00	273.65	7,040.1	-2,383.11	-2,967.1	-3,528.0	4,251.6	0.00	0.00	0.00
10,600.0	90.00	273.65	7,040.1	-2,383.12	-2,960.7	-3,627.8	4,345.0	0.00	0.00	0.00
10,700.0	90.00	273.65	7,040.1	-2,383.12	-2,954.4	-3,727.6	4,438.3	0.00	0.00	0.00
10,800.0	90.00	273.65	7,040.1	-2,383.12	-2,948.0	-3,827.4	4,531.7	0.00	0.00	0.00
10,900.0	90.00	273.65	7,040.1	-2,383.13	-2,941.6	-3,927.2	4,625.1	0.00	0.00	0.00
11,000.0	90.00	273.65	7,040.1	-2,383.13	-2,935.3	-4,027.0	4,718.4	0.00	0.00	0.00
11,100.0	90.00	273.65	7,040.1	-2,383.13	-2,928.9	-4,126.8	4,811.8	0.00	0.00	0.00
11,200.0	90.00	273.65	7,040.1	-2,383.13	-2,922.6	-4,226.6	4,905.2	0.00	0.00	0.00
11,300.0	90.00	273.65	7,040.1	-2,383.13	-2,916.2	-4,326.4	4,998.6	0.00	0.00	0.00
11,400.0	90.00	273.65	7,040.1	-2,383.13	-2,909.8	-4,426.2	5,091.9	0.00	0.00	0.00
11,500.0	90.00	273.65	7,040.1	-2,383.14	-2,903.5	-4,526.0	5,185.3	0.00	0.00	0.00
11,600.0	90.00	273.65	7,040.1	-2,383.14	-2,897.1	-4,625.8	5,278.7	0.00	0.00	0.00
11,700.0	90.00	273.65	7,040.1	-2,383.14	-2,890.7	-4,725.6	5,372.1	0.00	0.00	0.00
11,800.0	90.00	273.65	7,040.1	-2,383.14	-2,884.4	-4,825.4	5,465.4	0.00	0.00	0.00
11,900.0	90.00	273.65	7,040.1	-2,383.14	-2,878.0	-4,925.2	5,558.8	0.00	0.00	0.00
12,000.0	90.00	273.65	7,040.1	-2,383.14	-2,871.7	-5,025.0	5,652.2	0.00	0.00	0.00
12,100.0	90.00	273.65	7,040.1	-2,383.14	-2,865.3	-5,124.8	5,745.6	0.00	0.00	0.00
12,200.0	90.00	273.65	7,040.1	-2,383.14	-2,858.9	-5,224.6	5,838.9	0.00	0.00	0.00
12,300.0	90.00	273.64	7,040.1	-2,383.14	-2,852.6	-5,324.4	5,932.3	0.00	0.00	0.00
12,400.0	90.00	273.64	7,040.1	-2,383.13	-2,846.2	-5,424.2	6,025.7	0.00	0.00	0.00
12,500.0	90.00	273.64	7,040.1	-2,383.13	-2,839.9	-5,524.0	6,119.1	0.00	0.00	0.00
12,600.0	90.00	273.64	7,040.1	-2,383.13	-2,833.5	-5,623.8	6,212.5	0.00	0.00	0.00
12,700.0	90.00	273.64	7,040.1	-2,383.13	-2,827.2	-5,723.6	6,305.8	0.00	0.00	0.00
12,800.0	90.00	273.64	7,040.1	-2,383.13	-2,820.8	-5,823.4	6,399.2	0.00	0.00	0.00
12,900.0	90.00	273.64	7,040.1	-2,383.13	-2,814.5	-5,923.2	6,492.6	0.00	0.00	0.00
13,000.0	90.00	273.64	7,040.1	-2,383.13	-2,808.1	-6,023.0	6,586.0	0.00	0.00	0.00
13,100.0	90.00	273.64	7,040.1	-2,383.12	-2,801.7	-6,122.8	6,679.3	0.00	0.00	0.00
13,200.0	90.00	273.64	7,040.1	-2,383.12	-2,795.4	-6,222.6	6,772.7	0.00	0.00	0.00
13,300.0	90.00	273.64	7,040.1	-2,383.12	-2,789.0	-6,322.4	6,866.1	0.00	0.00	0.00

## Planning Report



<b>Database:</b>	EDM 5000.1 Single User Db	<b>Local Co-ordinate Reference:</b>	Well DT-FORBES C6-5-6
<b>Company:</b>	EXTRACTION OIL & GAS	<b>TVD Reference:</b>	KB-EST @ 4657.0usft (SAV 802)
<b>Project:</b>	WELD COUNTY, COLORADO (NAD 83)	<b>MD Reference:</b>	KB-EST @ 4657.0usft (SAV 802)
<b>Site:</b>	NW NE SEC. 5 T5N R65W 6th P.M.	<b>North Reference:</b>	True
<b>Well:</b>	DT-FORBES C6-5-6	<b>Survey Calculation Method:</b>	Minimum Curvature
<b>Wellbore:</b>	ORIGINAL WELLBORE		
<b>Design:</b>	PROPOSAL #2		

## Planned Survey

MD (usft)	Inc (°)	Azi (°)	TVD (usft)	SS (usft)	+N/-S (usft)	+E/-W (usft)	Vertical Section (usft)	Dogleg Rate (°/100usft)	Build Rate (°/100usft)	Turn Rate (°/100usft)
13,400.0	90.00	273.64	7,040.1	-2,383.11	-2,782.7	-6,422.2	6,959.5	0.00	0.00	0.00
13,500.0	90.00	273.64	7,040.1	-2,383.11	-2,776.3	-6,522.0	7,052.9	0.00	0.00	0.00
13,600.0	90.00	273.64	7,040.1	-2,383.11	-2,770.0	-6,621.8	7,146.2	0.00	0.00	0.00
13,700.0	90.00	273.64	7,040.1	-2,383.10	-2,763.6	-6,721.6	7,239.6	0.00	0.00	0.00
13,800.0	90.00	273.64	7,040.1	-2,383.10	-2,757.3	-6,821.4	7,333.0	0.00	0.00	0.00
13,900.0	90.00	273.64	7,040.1	-2,383.10	-2,750.9	-6,921.2	7,426.4	0.00	0.00	0.00
14,000.0	90.00	273.64	7,040.1	-2,383.09	-2,744.6	-7,021.0	7,519.7	0.00	0.00	0.00
14,100.0	90.00	273.64	7,040.1	-2,383.09	-2,738.2	-7,120.8	7,613.1	0.00	0.00	0.00
14,200.0	90.00	273.64	7,040.1	-2,383.08	-2,731.9	-7,220.6	7,706.5	0.00	0.00	0.00
14,300.0	90.00	273.64	7,040.1	-2,383.08	-2,725.5	-7,320.4	7,799.9	0.00	0.00	0.00
14,400.0	90.00	273.64	7,040.1	-2,383.07	-2,719.2	-7,420.2	7,893.3	0.00	0.00	0.00
14,500.0	90.00	273.64	7,040.1	-2,383.07	-2,712.8	-7,519.9	7,986.6	0.00	0.00	0.00
14,600.0	90.00	273.64	7,040.1	-2,383.06	-2,706.5	-7,619.7	8,080.0	0.00	0.00	0.00
14,700.0	90.00	273.64	7,040.1	-2,383.05	-2,700.2	-7,719.5	8,173.4	0.00	0.00	0.00
14,800.0	90.00	273.64	7,040.0	-2,383.05	-2,693.8	-7,819.3	8,266.8	0.00	0.00	0.00
14,900.0	90.00	273.64	7,040.0	-2,383.04	-2,687.5	-7,919.1	8,360.2	0.00	0.00	0.00
15,000.0	90.00	273.64	7,040.0	-2,383.03	-2,681.1	-8,018.9	8,453.5	0.00	0.00	0.00
15,100.0	90.00	273.64	7,040.0	-2,383.03	-2,674.8	-8,118.7	8,546.9	0.00	0.00	0.00
15,200.0	90.00	273.64	7,040.0	-2,383.02	-2,668.4	-8,218.5	8,640.3	0.00	0.00	0.00
15,300.0	90.00	273.64	7,040.0	-2,383.01	-2,662.1	-8,318.3	8,733.7	0.00	0.00	0.00
15,400.0	90.00	273.64	7,040.0	-2,383.01	-2,655.7	-8,418.1	8,827.1	0.00	0.00	0.00
<b>BHL - DT-FORBES C6-5-6</b>										
<b>15,479.0</b>	<b>90.00</b>	<b>273.64</b>	<b>7,040.0</b>	<b>-2,383.00</b>	<b>-2,650.7</b>	<b>-8,497.0</b>	<b>8,900.8</b>	<b>0.00</b>	<b>0.00</b>	<b>0.00</b>

## Formations

MD (usft)	TVD (usft)	Name	Lithology	Dip (°)	Dip Direction (°)
4,045.3	3,586.0	PARKMAN			
4,926.1	4,290.0	SUSSEX			
5,608.0	4,835.0	SHANNON			
7,760.8	6,710.0	SHARON SPRINGS			
7,794.4	6,740.0	NIOBRARA			
8,208.6	7,005.0	FORT HAYS			
8,302.7	7,030.0	CODELL			

## Plan Annotations

MD (usft)	TVD (usft)	Local Coordinates		Comment
		+N/-S (usft)	+E/-W (usft)	
1,350.0	1,350.0	0.0	0.0	START NUDGE (6°/100ft BUR)
1,965.7	1,923.9	-184.7	-51.3	EOB TO 36.94° INC
6,744.2	5,743.1	-2,952.1	-819.1	END OF TANGENT
7,359.9	6,317.0	-3,136.8	-870.4	EOD TO VERTICAL
7,509.9	6,467.0	-3,136.8	-870.4	KOP (10°/100ft BUR)
8,409.9	7,040.0	-3,100.3	-1,442.2	7" ICP - DT-FORBES C6-5-6
15,479.0	7,040.0	-2,650.7	-8,497.0	BHL - DT-FORBES C6-5-6