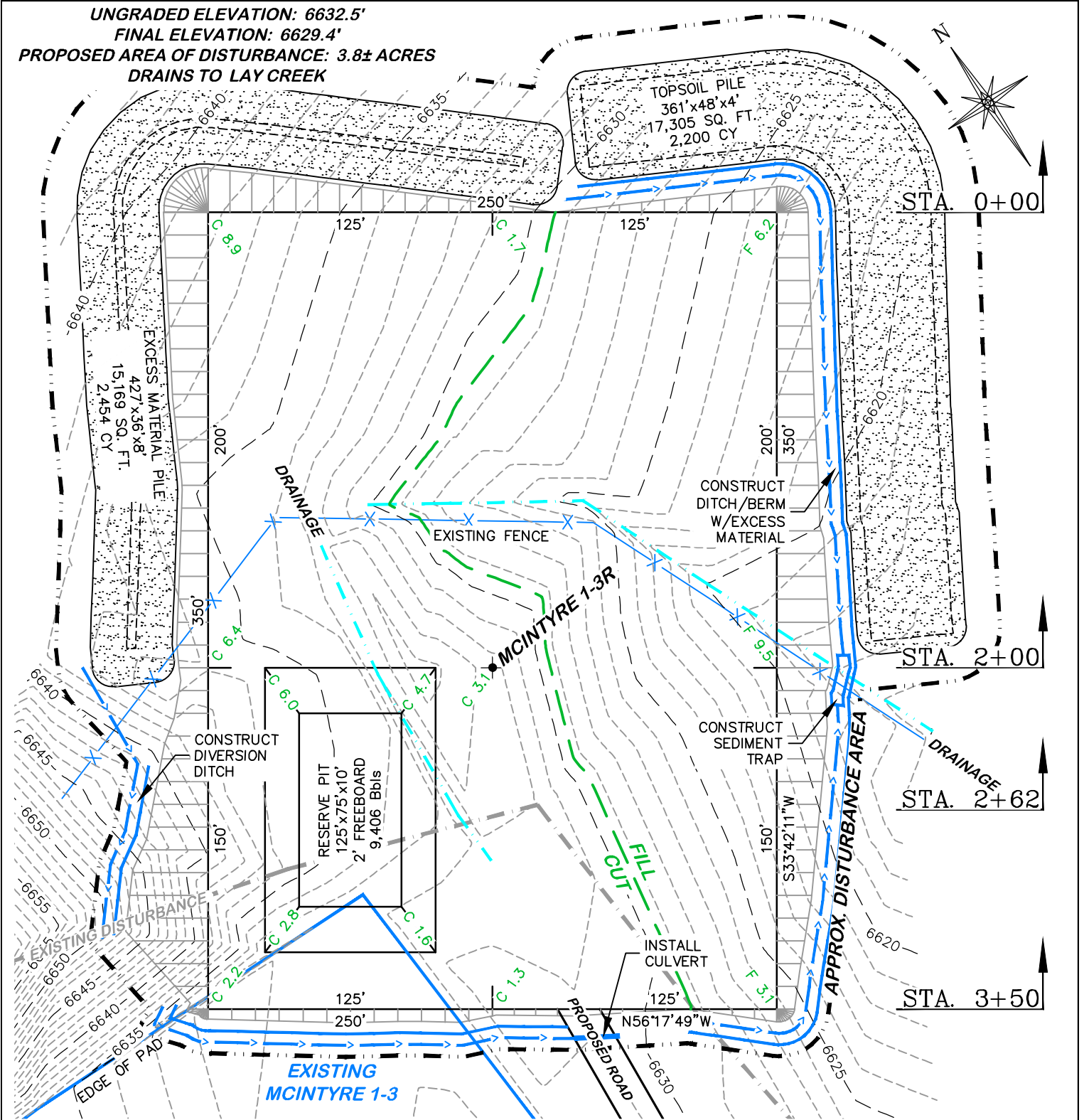
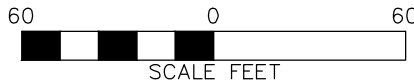


UNGRADED ELEVATION: 6632.5'
 FINAL ELEVATION: 6629.4'
 PROPOSED AREA OF DISTURBANCE: 3.8± ACRES
 DRAINS TO LAY CREEK



**BEFORE DIGGING
 CALL FOR
 UTILITY LINE LOCATION**

NOTE: THE EARTH QUANTITIES ON
 THIS DRAWING ARE ESTIMATED AND
 THE USE OF SAID QUANTITIES IS AT
 THE RESPONSIBILITY OF THE USER.



MCINTYRE 1-3R

CONSTRUCTION LAYOUT DRAWING 1 OF 5

SANTA FE NATURAL RESOURCES

MCINTYRE 1-3R

**NESE, SECTION 3, T. 7 N., R. 94 W., 6th P.M.,
 MOFFAT COUNTY, COLORADO**

ESTIMATED EARTHWORK

DRG RIFFIN & ASSOCIATES, INC.
 (307) 362-5028 1414 ELK ST., ROCK SPRINGS, WY 82901

DRAWN: 9/26/2014 - TCM	SCALE: 1" = 60'
REVISED: N/A -	DRG JOB No. 20691
	EXHIBIT 2

ITEM	CUT	FILL	TOPSOIL	EXCESS
PAD	8,108 CY	6,179 CY	1,919 CY	10 CY
PIT	2,444 CY			2,444 CY
TOTALS	10,552 CY	6,179 CY	1,919 CY	2,454 CY