

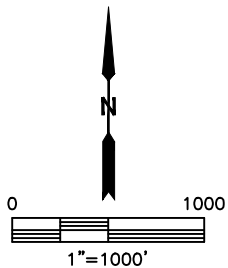
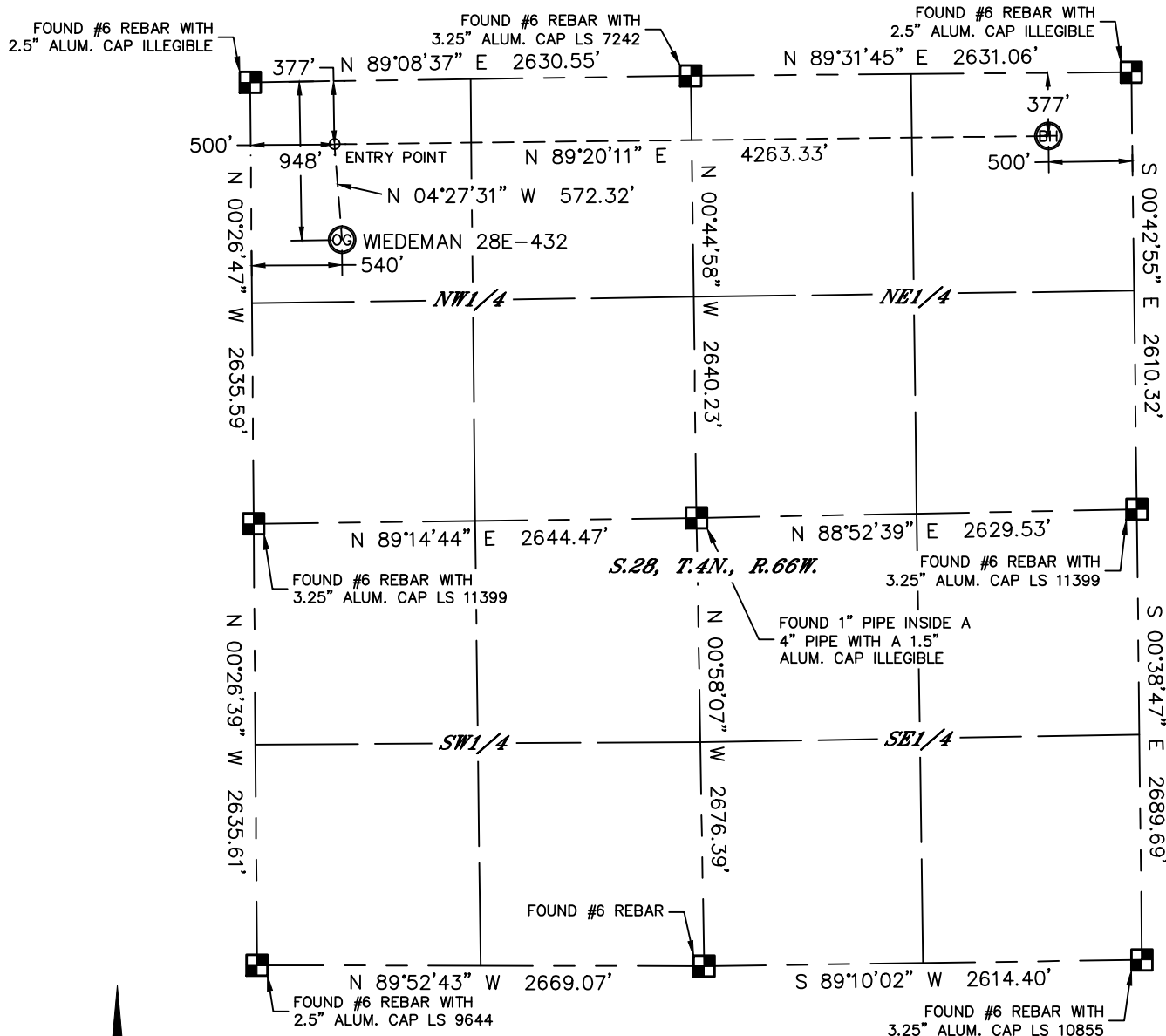


Lat40°, Inc. 1635 Foxtrail Drive, Suite 325 Loveland, CO 970-776-3321

WELL LOCATION CERTIFICATE

THIS MAP DOES NOT REPRESENT A BOUNDARY SURVEY

SECTION: 28
TOWNSHIP: 4N
RANGE: 66W



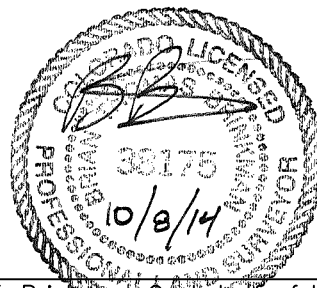
In accordance with a request from Mac Neumann with PDC ENERGY Lat40°, Inc. has determined the surface location of the WIEDEMAN 28E-432 to be 948' from the NORTH line and 540' from the WEST line and the bottom hole to be 377' from the NORTH line and 500' from the EAST line as measured at right angles from the section lines of Section 28, Township 4 North, Range 66 West of the Sixth Principal Meridian, County of Weld, State of Colorado.

I hereby state that this Well Location Certificate was prepared by me, or under my direct supervision, that the fieldwork was completed on 6/25/2014, for and on behalf of PDC ENERGY. That this is not a Land Survey Plat or an Improvement Survey Plat, and that it is not to be relied upon for establishment of fence, building, or other future improvement lines.

SURFACE LOCATION
LAT: 40.28725°N
LONG: 104.78997°W
PDOP: 1.7
ELEV: 4762'
1/4,1/4: NWNW

BOTTOM HOLE
LAT: 40.28886°N
LONG: 104.77484°W

ENTRY POINT
LAT: 40.28882°N
LONG: 104.79011°W



Brian T. Brinkman - On behalf of Lat40°, Inc.
Colorado Licensed Professional
Land Surveyor No. 38175
DATE: 10/8/2014
PROJECT#: 2014114

LEGEND

- = ALIQUOT MONUMENT AS DESCRIBED
- = CALCULATED POSITION

NOTE:

- 1) Bearings shown are Grid Bearings of the Colorado State Plane Coordinate System, North Zone, North American Datum 1983. The lined dimensions as contained herein are based upon the "U.S. Survey Foot."
- 2) Ground elevations are based on an observed GPS elevation (NAVD 1988 DATUM).
- 3) IMPROVEMENTS: See LOCATION DRAWING for all visible improvements within 500' of disturbed area.
- 4) SURFACE USE: CROP LAND
- 5) INSTRUMENT OPERATOR: ADAM KELLY
- 6) NEAREST CULTURAL ITEMS:
BUILDING: ±817' SW
BUILDING UNIT: ±846' SW
HIGH OCCUPANCY BUILDING UNIT: ±3074' E
DESIGNATED OUTSIDE ACTIVITY AREA: 5280'+
PUBLIC ROAD: (CR 29) 514' W
ABOVEGROUND UTILITY: 505' W
RAILROAD: ±4201' SE
PROPERTY LINE: 540' W

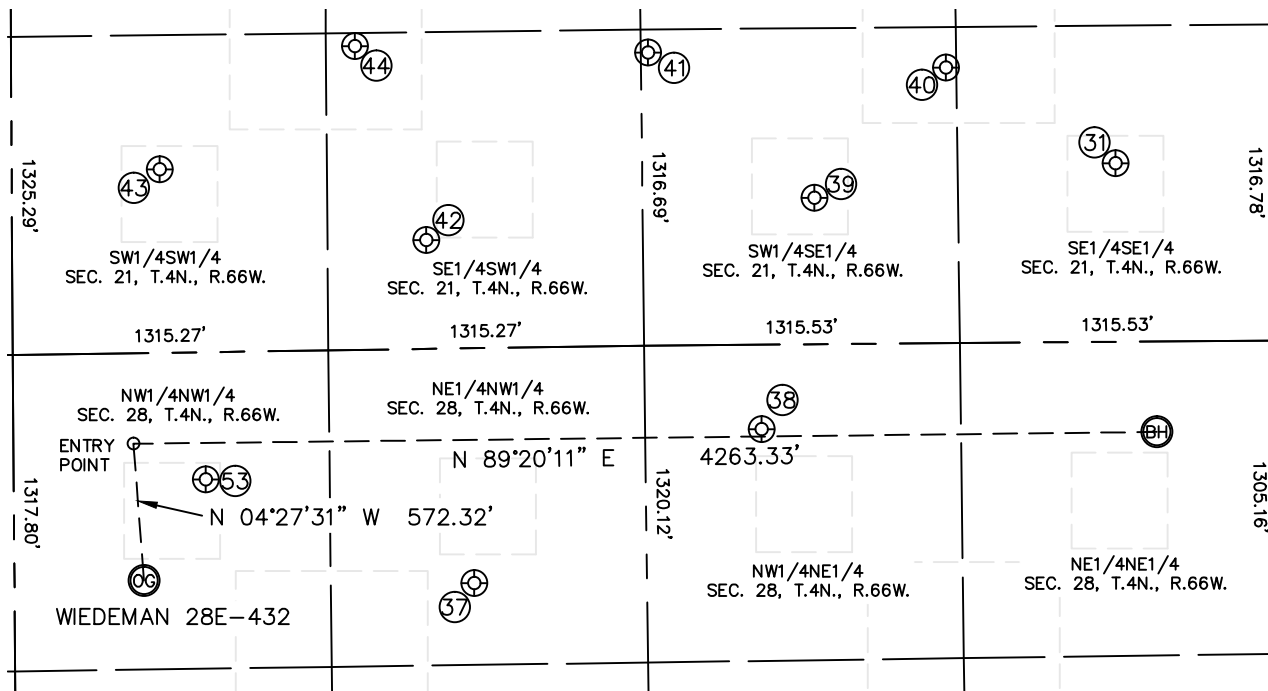


Lat40°, Inc. 1635 Foxtrail Drive, Suite 325 Loveland, CO 970-776-3321

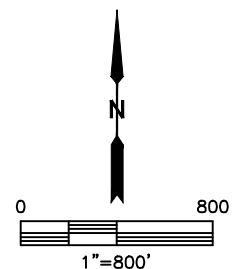
SITE SKETCH

WIEDEMAN 28E-432

SECTION: 28
TOWNSHIP: 4N
RANGE: 66W



WELL NO.	WELL NAME	SHL FOOTAGE				SHL LAT°	SHL LONG°	PDOP	ELEV (FT.)	1/4/1/4
31	SCHAEFER 1	743	FSL	656	FEL	40.29193	-104.77542	2.2	4748	SESE
37	COGBURN 21-28	979	FNL	1916	FWL	40.28719	-104.78504	1.8	4754	NENW
38	GILCREST TOWNSITE 28-12	352	FNL	2146	FWL	40.28893	-104.78074	1.7	4748	NWNE
39	SANDAU 21-1516	610	FSL	1912	FEL	40.29157	-104.77992	1.6	4749	SWSE
40	SANDAU K 21-23	1148	FSL	1356	FEL	40.29304	-104.77794	1.4	4747	SWSE
41	SANDAU K 21-24	1220	FSL	2596	FEL	40.29324	-104.78238	1.4	4753	SWSE
42	GILCREST TOWNSITE 21-34	454	FSL	1726	FWL	40.29112	-104.78572	1.5	4757	SESW
43	BYRON 13-21	764	FSL	617	FWL	40.29195	-104.78969	1.7	4759	SWSW
44	KISSLER K 21-25	1266	FSL	1432	FWL	40.29334	-104.78676	1.7	4758	SESW
53	LODWICK 4-28	530	FNL	800	FWL	40.28840	-104.78904	2.0	4759	NWNW



DATE: 10/8/2014
PROJECT#: 2014114