

SOUTHWESTERN ENERGY PRODUCTION COMPANY

CONSTRUCTION LAYOUT FOR

KLINE #21-23

SECTION 23, T7N, R91W, 6th. P.M.

714' FNL 1849' FWL

FIGURE #1

SCALE: 1" = 60'

DATE: 06-27-11

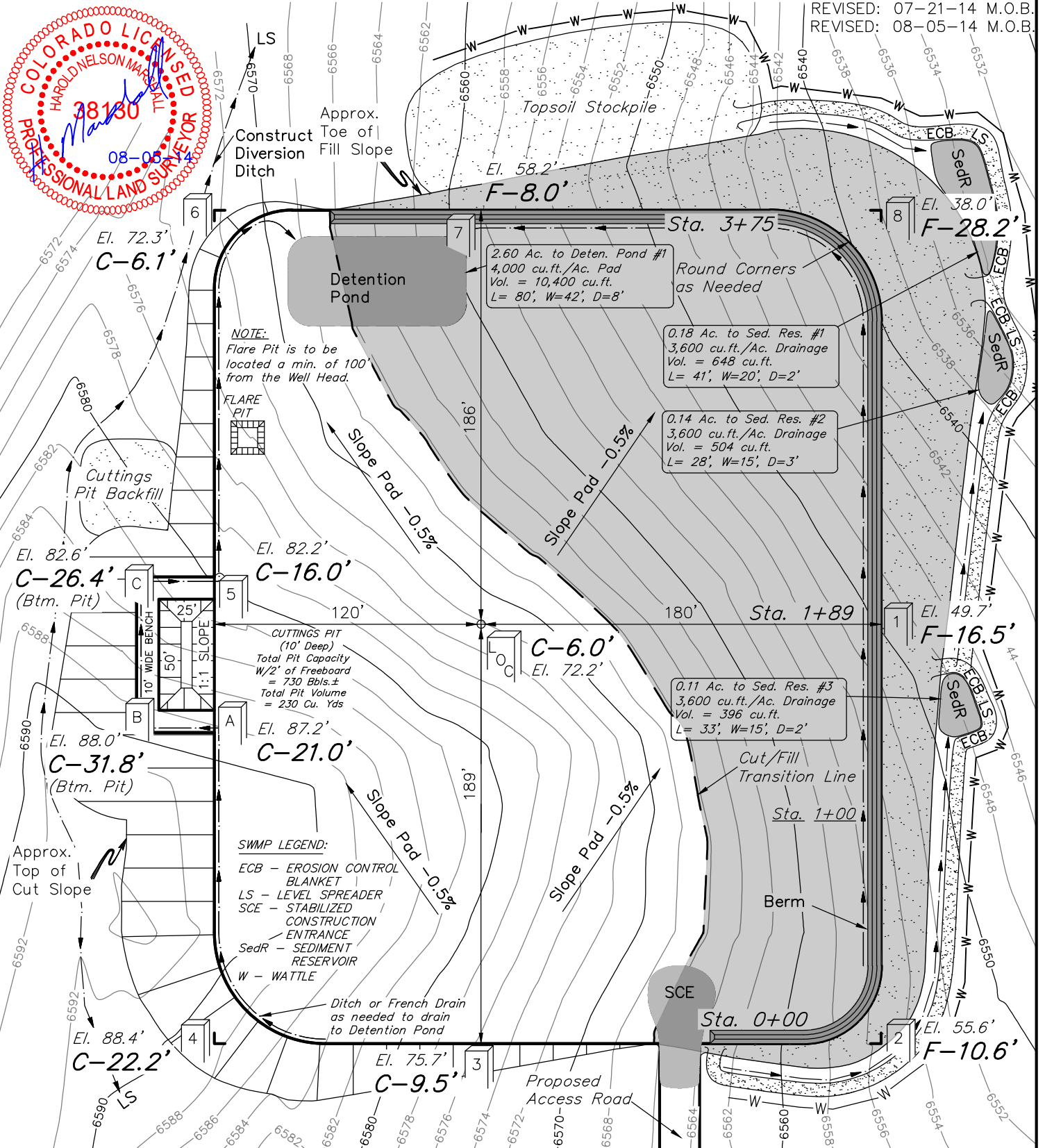
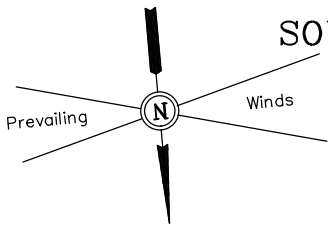
DRAWN BY: M.D.

REVISED: 11-18-11 T.B.

REVISED: 05-13-14 T.B.

REVISED: 07-21-14 M.O.B.

REVISED: 08-05-14 M.O.B.



SOUTHWESTERN ENERGY PRODUCTION COMPANY

FIGURE #2

CONSTRUCTION LAYOUT CROSS SECTIONS FOR

KLINE #21-23

SECTION 23, T7N, R91W, 6th. P.M.

714' FNL 1849' FWL

1" = 40'
X-Section Scale
1" = 100'

DATE: 06-27-11

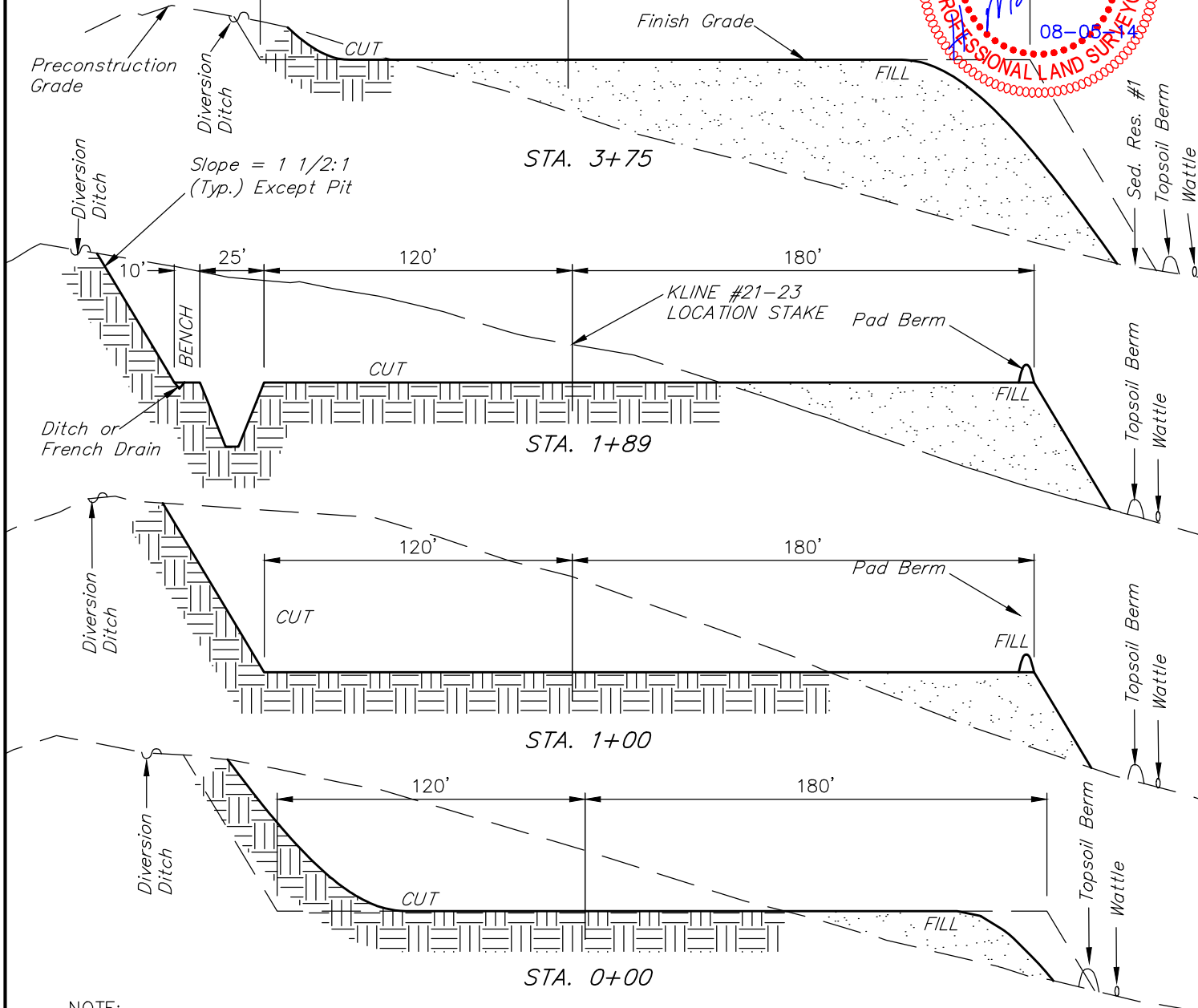
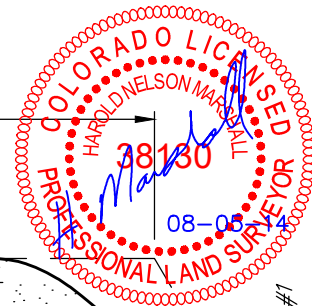
DRAWN BY: M.D.

REVISED: 11-18-11 T.B.

REVISED: 05-13-14 T.B.

REVISED: 07-21-14 M.O.B.

REVISED: 08-05-14 M.O.B.



NOTE:

Topsoil should not be Stripped Below Finished Grade on Substructure Area.

APPROXIMATE ACREAGE

WELL SITE DISTURBANCE = ± 3.632 ACRES
ACCESS ROAD DISTURBANCE = ± 0.264 ACRES
TOTAL = ± 3.896 ACRES

* NOTE:

FILL QUANTITY INCLUDES 5% FOR COMPACTION

APPROXIMATE YARDAGES

(6") Topsoil Stripping = 2,760 Cu. Yds.
Remaining Location = 28,960 Cu. Yds.
TOTAL CUT = 31,720 CU. YDS.
FILL = 28,820 CU. YDS.

EXCESS MATERIAL = 2,900 Cu. Yds.
Topsoil & Pit Backfill (1/2 Pit Vol.) = 2,900 Cu. Yds.
EXCESS UNBALANCE (After Interim Rehabilitation) = 0 Cu. Yds.

UINTAH ENGINEERING & LAND SURVEYING
85 So. 200 East * Vernal, Utah 84078 * (435) 789-1017

SOUTHWESTERN ENERGY PRODUCTION COMPANY

TYPICAL RIG LAYOUT FOR

KLINE #21-23

SECTION 23, T7N, R91W, 6th. P.M.

714' FNL 1849' FWL

FIGURE #3

SCALE: 1" = 60'

DATE: 06-27-11

DRAWN BY: M.D.

REVISED: 11-18-11 T.B.

REVISED: 05-13-14 T.B.

REVISED: 07-21-14 M.O.B.

REVISED: 08-05-14 M.O.B.



Approx.
Toe of
Fill Slope

Detention
Pond

FLOCK PIT

GAS
BUSTER

Cuttings
Pit Backfill

25'
50'
1:1 SLOPE

CUTTINGS PIT
(10' Deep)
Total Pit Capacity
W/2' of Freeboard
= 730 Bbls.±
Total Pit Volume
= 230 Cu. Yds

CUTTINGS
TANK

SHAKER TANK

WATER

COMPRESSOR

COMPRESSOR

SUCTION TANK

PUMP 1

PUMP 2

LOCATION/PICKUP

DOG HOUSE

TOOLS

WATER

FUEL

GENERATOR

GENERATOR

DIESEL

TRASH

FUEL

GEN.

WATER

TRAILER

TRAILER

TRAILER

TRAILER

TRAILER

TRAILER

TRAILER

TRAILER

TRAILER

TRAILER

TRAILER

TRAILER

TRAILER

TRAILER

TRAILER

TRAILER

TRAILER

TRAILER

Cut/Fill
Transition Line

Berm

SCE

Proposed
Access Road

UINTAH ENGINEERING & LAND SURVEYING

85 So. 200 East * Vernal, Utah 84078 * (435) 789-1017

SOUTHWESTERN ENERGY PRODUCTION COMPANY

RECLAMATION DIAGRAM FOR

KLINE #21-23

SECTION 23, T7N, R91W, 6th. P.M.

714' FNL 1849' FWL

FIGURE #4

SCALE: 1" = 60'

DATE: 06-27-11

DRAWN BY: M.D.

REVISED: 11-18-11 T.B.

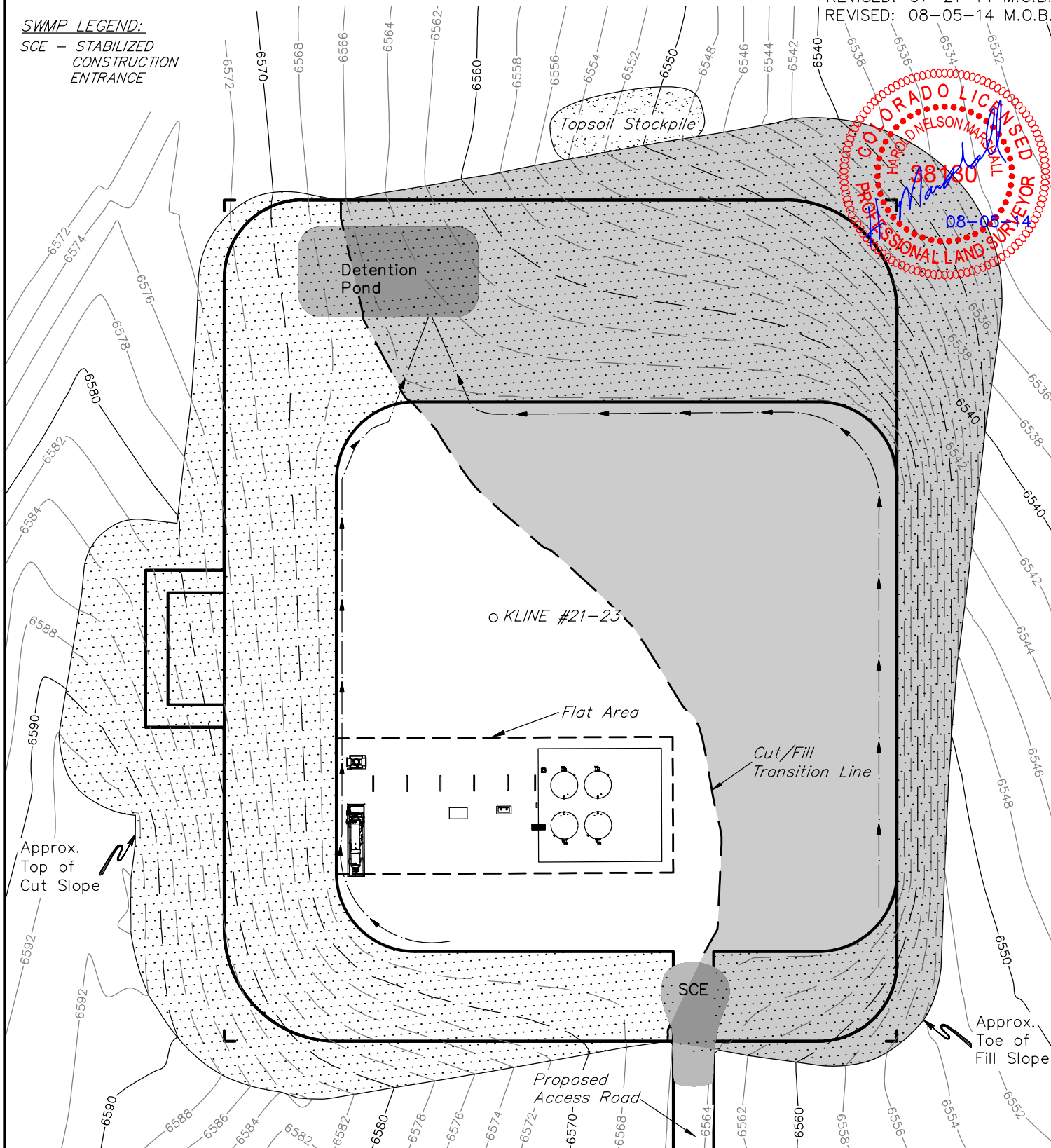
REVISED: 05-13-14 T.B.

REVISED: 07-21-14 M.O.B.

REVISED: 08-05-14 M.O.B.

SWMP LEGEND:

SCE - STABILIZED
CONSTRUCTION
ENTRANCE



RECLAIMED AREA

APPROXIMATE ACREAGES

UN-RECLAIMED = ± 1.398 ACRES

UINTAH ENGINEERING & LAND SURVEYING

85 So. 200 East * Vernal, Utah 84078 * (435) 789-1017

FIGURE #5

SURVEYED BY: GLEN MCELROY

DATE: 06-28-11

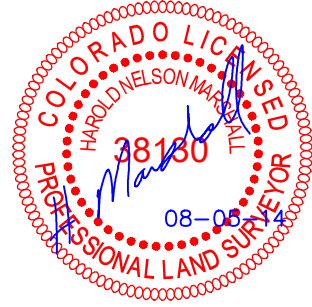
DRAWN BY: M.D.

REVISÉD: 11-18-11 T.B.

REVISED: 05-13-14 T.B.

REVISÉ: 07-21-14 M.O.B.

REVISÉD: 08-05-14 M.O.B.



SOUTHWESTERN ENERGY PRODUCTION COMPANY

FIGURE #5A

LOCATION DRAWING DETAIL FOR

KLINE #21-23

SECTION 23, T7N, R91W, 6th. P.M.

714' FNL 1849' FWL

SCALE: 1" = 200'

DATE SURVEYED: 07-17-14

SURVEYED BY: JOHN FLOYD

DATE DRAWN: 06-27-11

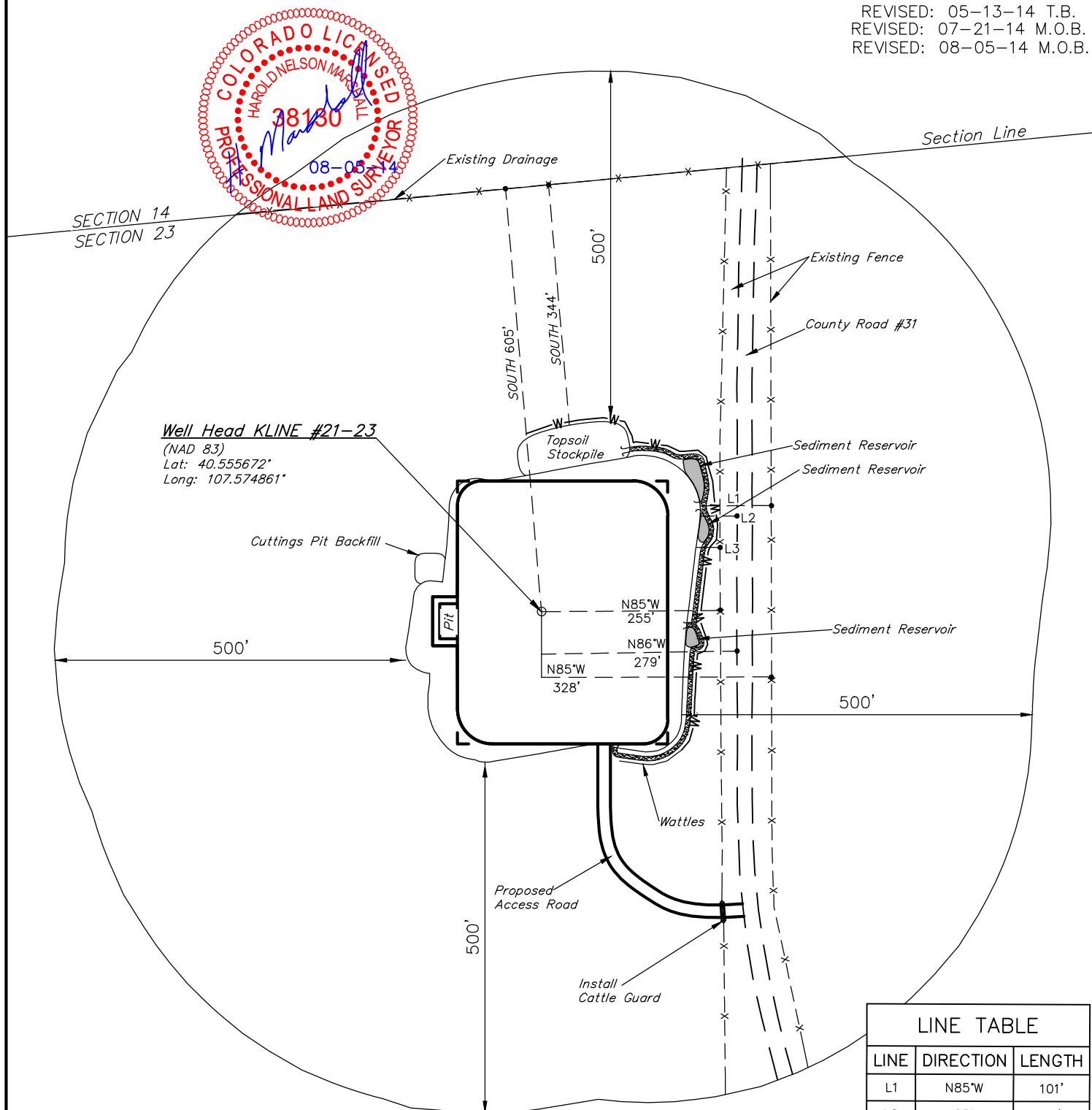
DRAWN BY: M.D.

REVISED: 11-18-11 T.B.

REVISED: 05-13-14 T.B.

REVISED: 07-21-14 M.O.B.

REVISED: 08-05-14 M.O.B.



Well Head KLINE #21-23

(NAD 83)

Lat: 40.555672°

Long: 107.574861°

Cuttings Pit Backfill

Existing Drainage

500'

SOUTH 605'
SOUTH 344'

Existing Fence

County Road #31

Sediment Reservoir

Sediment Reservoir

Sediment Reservoir

500'

Wattles

Proposed
Access Road

Install
Cattle Guard

500'

LINE TABLE

LINE	DIRECTION	LENGTH
L1	N85°W	101'
L2	N85°W	53'
L3	N85°W	34'

UINTAH ENGINEERING & LAND SURVEYING

85 So. 200 East * Vernal, Utah 84078 * (435) 789-1017