

# Synergy Resources

Well Name: **SRC Gilbert A-14-11CHZM**

Surface Location: SRC Gilbert 42-14-11NHZ Pad Sec.14-T5N-R66W  
North American Datum 1983, US State Plane 1983, Colorado Northern Zone

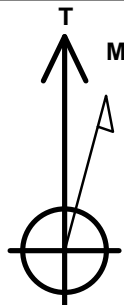
Ground Elevation: 4835.0

+N/-S	+E/-W	Northing	Easting	Latitude	Longitude	Slot
0.0	0.0	1389104.69	3210782.68	40.399025	-104.743180	

RKB-12' WELL @ 4847.0ft (RKB-12')

## WELLBORE TARGET DETAILS

Name	TVD	+N/-S	+E/-W	Shape
SHL 2482'FSL & 2290'FEL, Sec.14	1.0	0.0	0.0	Point
BHL 480'FNL & 2572'FWL, Sec.11	7448.0	7879.0	-1102.1	Point



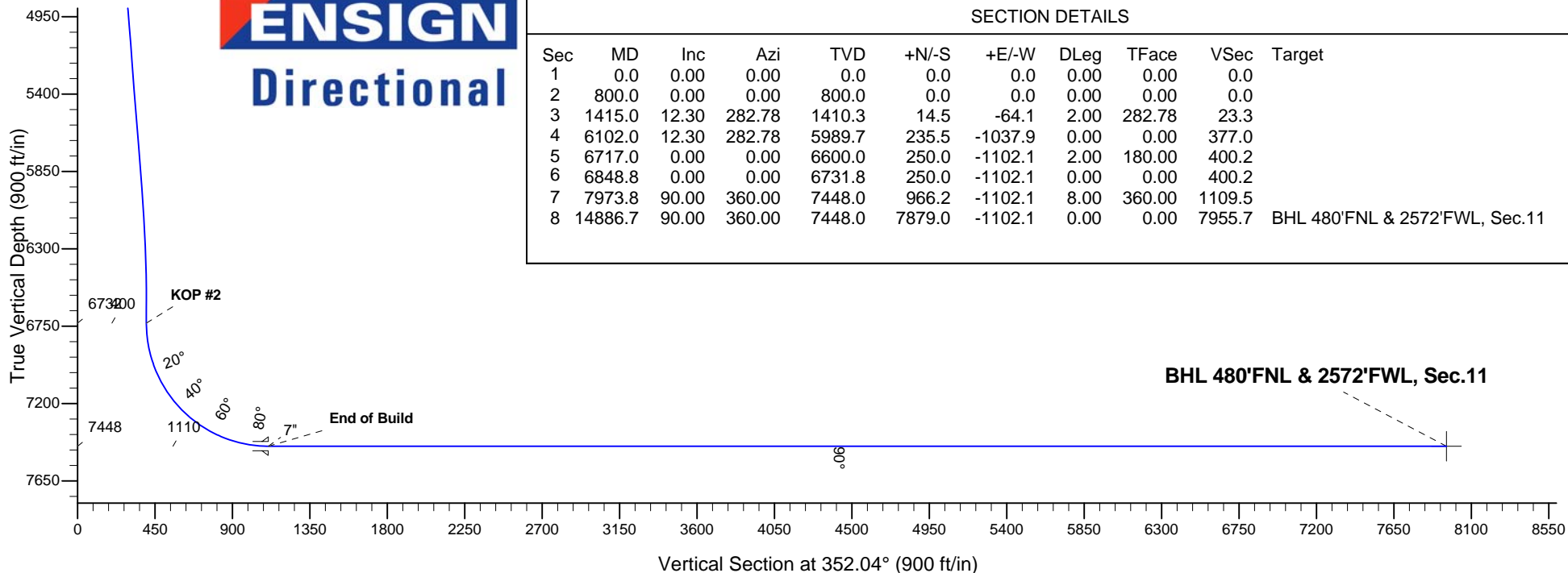
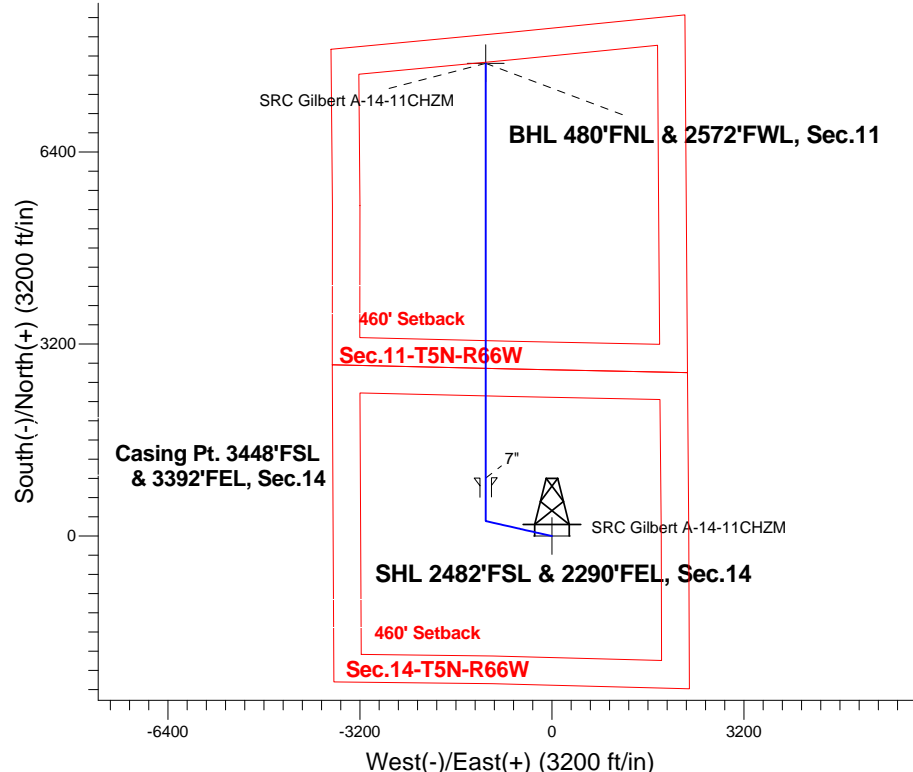
Azimuths to True North  
Magnetic North: 8.57°

Magnetic Field  
Strength: 52909.0snT  
Dip Angle: 66.98°  
Date: 7/31/2013  
Model: IGRF2010

SRC Gilbert 42-14-11NHZ Pad Sec.14-T5N-R66W  
SRC Gilbert A-14-11CHZM  
Plan #2 (7-31-14)  
10:43, July 31 2014

## ANNOTATIONS

TVD	MD	Annotation
800.0	800.0	KOP #1
6731.8	6848.8	KOP #2
7448.0	7973.8	End of Build





## **Synergy Resources**

**SEC.14-T5N-R66W**

**SRC Gilbert 42-14-11NHZ Pad Sec.14-T5N-R66W**

**SRC Gilbert A-14-11CHZM**

**Wellbore #1**

**Plan: Plan #2 (7-31-14)**

## **Standard Planning Report**

**31 July, 2014**

<b>Database:</b>	Landmark	<b>Local Co-ordinate Reference:</b>	Well SRC Gilbert A-14-11CHZM
<b>Company:</b>	Synergy Resources	<b>TVD Reference:</b>	WELL @ 4847.0ft (RKB-12')
<b>Project:</b>	SEC.14-T5N-R66W	<b>MD Reference:</b>	WELL @ 4847.0ft (RKB-12')
<b>Site:</b>	SRC Gilbert 42-14-11NHZ Pad Sec.14-T5N-R66W	<b>North Reference:</b>	True
<b>Well:</b>	SRC Gilbert A-14-11CHZM	<b>Survey Calculation Method:</b>	Minimum Curvature
<b>Wellbore:</b>	Wellbore #1		
<b>Design:</b>	Plan #2 (7-31-14)		

<b>Project</b>	SEC.14-T5N-R66W		
<b>Map System:</b>	US State Plane 1983	<b>System Datum:</b>	Mean Sea Level
<b>Geo Datum:</b>	North American Datum 1983		Using Well Reference Point
<b>Map Zone:</b>	Colorado Northern Zone		Using geodetic scale factor

Site						SRC Gilbert 42-14-11NHZ Pad Sec.14-T5N-R66W											
Site Position:						Northing:			1,389,074.67 ft			Latitude:			40.398941		
From:			Lat/Long			Easting:			3,210,850.06 ft			Longitude:			-104.742939		
Position Uncertainty:			0.0 ft			Slot Radius:			"			Grid Convergence:			0.49 °		

Well	SRC Gilbert A-14-11CHZM					
Well Position	+N-S	30.6 ft	Northing:	1,389,104.69 ft	Latitude:	40.399025
	+E-W	-67.1 ft	Easting:	3,210,782.68 ft	Longitude:	-104.743180
Position Uncertainty		0.0 ft	Wellhead Elevation:	ft	Ground Level:	4,835.0 ft

<b>Wellbore</b>	Wellbore #1				
<b>Magnetics</b>	<b>Model Name</b>	<b>Sample Date</b>	<b>Declination (°)</b>	<b>Dip Angle (°)</b>	<b>Field Strength (nT)</b>
	IGRF2010	7/31/2013	8.57	66.98	52,909

<b>Design</b>	Plan #2 (7-31-14)			
<b>Audit Notes:</b>				
<b>Version:</b>	<b>Phase:</b>	PROTOTYPE	<b>Tie On Depth:</b>	0.0
<b>Vertical Section:</b>	<b>Depth From (TVD) (ft)</b>	<b>+N/-S (ft)</b>	<b>+E/-W (ft)</b>	<b>Direction (°)</b>
	0.0	0.0	0.0	352.04

<b>Plan Sections</b>										
Measured Depth (ft)	Inclination (°)	Azimuth (°)	Vertical Depth (ft)	+N/-S (ft)	+E/-W (ft)	Dogleg Rate (°/100ft)	Build Rate (°/100ft)	Turn Rate (°/100ft)	TFO (°)	Target
0.0	0.00	0.00	0.0	0.0	0.0	0.00	0.00	0.00	0.00	
800.0	0.00	0.00	800.0	0.0	0.0	0.00	0.00	0.00	0.00	
1,415.0	12.30	282.78	1,410.3	14.5	-64.1	2.00	2.00	0.00	282.78	
6,102.0	12.30	282.78	5,989.7	235.5	-1,037.9	0.00	0.00	0.00	0.00	
6,717.0	0.00	0.00	6,600.0	250.0	-1,102.1	2.00	-2.00	0.00	180.00	
6,848.8	0.00	0.00	6,731.8	250.0	-1,102.1	0.00	0.00	0.00	0.00	
7,973.8	90.00	360.00	7,448.0	966.2	-1,102.1	8.00	8.00	0.00	360.00	
14,886.7	90.00	360.00	7,448.0	7,879.0	-1,102.1	0.00	0.00	0.00	0.00	BHL 480'FNL & 257

<b>Database:</b>	Landmark	<b>Local Co-ordinate Reference:</b>	Well SRC Gilbert A-14-11CHZM
<b>Company:</b>	Synergy Resources	<b>TVD Reference:</b>	WELL @ 4847.0ft (RKB-12')
<b>Project:</b>	SEC.14-T5N-R66W	<b>MD Reference:</b>	WELL @ 4847.0ft (RKB-12')
<b>Site:</b>	SRC Gilbert 42-14-11NHZ Pad	<b>North Reference:</b>	True
<b>Well:</b>	SRC Gilbert A-14-11CHZM	<b>Survey Calculation Method:</b>	Minimum Curvature
<b>Wellbore:</b>	Wellbore #1		
<b>Design:</b>	Plan #2 (7-31-14)		

Planned Survey									
Measured Depth (ft)	Inclination (°)	Azimuth (°)	Vertical Depth (ft)	+N/-S (ft)	+E/-W (ft)	Vertical Section (ft)	Dogleg Rate (°/100ft)	Build Rate (°/100ft)	Turn Rate (°/100ft)
0.0	0.00	0.00	0.0	0.0	0.0	0.0	0.00	0.00	0.00
100.0	0.00	0.00	100.0	0.0	0.0	0.0	0.00	0.00	0.00
200.0	0.00	0.00	200.0	0.0	0.0	0.0	0.00	0.00	0.00
300.0	0.00	0.00	300.0	0.0	0.0	0.0	0.00	0.00	0.00
400.0	0.00	0.00	400.0	0.0	0.0	0.0	0.00	0.00	0.00
500.0	0.00	0.00	500.0	0.0	0.0	0.0	0.00	0.00	0.00
600.0	0.00	0.00	600.0	0.0	0.0	0.0	0.00	0.00	0.00
700.0	0.00	0.00	700.0	0.0	0.0	0.0	0.00	0.00	0.00
800.0	0.00	0.00	800.0	0.0	0.0	0.0	0.00	0.00	0.00
<b>KOP #1</b>									
900.0	2.00	282.78	900.0	0.4	-1.7	0.6	2.00	2.00	0.00
1,000.0	4.00	282.78	999.8	1.5	-6.8	2.5	2.00	2.00	0.00
1,100.0	6.00	282.78	1,099.5	3.5	-15.3	5.6	2.00	2.00	0.00
1,200.0	8.00	282.78	1,198.7	6.2	-27.2	9.9	2.00	2.00	0.00
1,300.0	10.00	282.78	1,297.5	9.6	-42.4	15.4	2.00	2.00	0.00
1,400.0	12.00	282.78	1,395.6	13.8	-61.1	22.2	2.00	2.00	0.00
1,415.0	12.30	282.78	1,410.3	14.5	-64.1	23.3	2.00	2.00	0.00
1,500.0	12.30	282.78	1,493.3	18.6	-81.8	29.7	0.00	0.00	0.00
1,600.0	12.30	282.78	1,591.0	23.3	-102.6	37.3	0.00	0.00	0.00
1,700.0	12.30	282.78	1,688.7	28.0	-123.3	44.8	0.00	0.00	0.00
1,800.0	12.30	282.78	1,786.4	32.7	-144.1	52.3	0.00	0.00	0.00
1,900.0	12.30	282.78	1,884.2	37.4	-164.9	59.9	0.00	0.00	0.00
2,000.0	12.30	282.78	1,981.9	42.1	-185.7	67.4	0.00	0.00	0.00
2,100.0	12.30	282.78	2,079.6	46.8	-206.4	75.0	0.00	0.00	0.00
2,200.0	12.30	282.78	2,177.3	51.5	-227.2	82.5	0.00	0.00	0.00
2,300.0	12.30	282.78	2,275.0	56.3	-248.0	90.1	0.00	0.00	0.00
2,400.0	12.30	282.78	2,372.7	61.0	-268.8	97.6	0.00	0.00	0.00
2,500.0	12.30	282.78	2,470.4	65.7	-289.6	105.2	0.00	0.00	0.00
2,600.0	12.30	282.78	2,568.1	70.4	-310.3	112.7	0.00	0.00	0.00
2,700.0	12.30	282.78	2,665.8	75.1	-331.1	120.3	0.00	0.00	0.00
2,800.0	12.30	282.78	2,763.5	79.8	-351.9	127.8	0.00	0.00	0.00
2,900.0	12.30	282.78	2,861.2	84.5	-372.7	135.3	0.00	0.00	0.00
3,000.0	12.30	282.78	2,958.9	89.3	-393.4	142.9	0.00	0.00	0.00
3,100.0	12.30	282.78	3,056.6	94.0	-414.2	150.4	0.00	0.00	0.00
3,200.0	12.30	282.78	3,154.3	98.7	-435.0	158.0	0.00	0.00	0.00
3,300.0	12.30	282.78	3,252.0	103.4	-455.8	165.5	0.00	0.00	0.00
3,400.0	12.30	282.78	3,349.7	108.1	-476.5	173.1	0.00	0.00	0.00
3,500.0	12.30	282.78	3,447.4	112.8	-497.3	180.6	0.00	0.00	0.00
3,600.0	12.30	282.78	3,545.1	117.5	-518.1	188.2	0.00	0.00	0.00
3,700.0	12.30	282.78	3,642.8	122.2	-538.9	195.7	0.00	0.00	0.00
3,800.0	12.30	282.78	3,740.5	127.0	-559.6	203.3	0.00	0.00	0.00
3,900.0	12.30	282.78	3,838.2	131.7	-580.4	210.8	0.00	0.00	0.00
4,000.0	12.30	282.78	3,935.9	136.4	-601.2	218.3	0.00	0.00	0.00
4,100.0	12.30	282.78	4,033.6	141.1	-622.0	225.9	0.00	0.00	0.00
4,200.0	12.30	282.78	4,131.4	145.8	-642.8	233.4	0.00	0.00	0.00
4,300.0	12.30	282.78	4,229.1	150.5	-663.5	241.0	0.00	0.00	0.00
4,400.0	12.30	282.78	4,326.8	155.2	-684.3	248.5	0.00	0.00	0.00
4,500.0	12.30	282.78	4,424.5	159.9	-705.1	256.1	0.00	0.00	0.00
4,600.0	12.30	282.78	4,522.2	164.7	-725.9	263.6	0.00	0.00	0.00
4,700.0	12.30	282.78	4,619.9	169.4	-746.6	271.2	0.00	0.00	0.00
4,800.0	12.30	282.78	4,717.6	174.1	-767.4	278.7	0.00	0.00	0.00
4,900.0	12.30	282.78	4,815.3	178.8	-788.2	286.3	0.00	0.00	0.00
5,000.0	12.30	282.78	4,913.0	183.5	-809.0	293.8	0.00	0.00	0.00

<b>Database:</b>	Landmark	<b>Local Co-ordinate Reference:</b>	Well SRC Gilbert A-14-11CHZM
<b>Company:</b>	Synergy Resources	<b>TVD Reference:</b>	WELL @ 4847.0ft (RKB-12')
<b>Project:</b>	SEC.14-T5N-R66W	<b>MD Reference:</b>	WELL @ 4847.0ft (RKB-12')
<b>Site:</b>	SRC Gilbert 42-14-11NHZ Pad	<b>North Reference:</b>	True
	Sec.14-T5N-R66W		
<b>Well:</b>	SRC Gilbert A-14-11CHZM	<b>Survey Calculation Method:</b>	Minimum Curvature
<b>Wellbore:</b>	Wellbore #1		
<b>Design:</b>	Plan #2 (7-31-14)		

Planned Survey										
Measured Depth (ft)	Inclination (°)	Azimuth (°)	Vertical Depth (ft)	+N/-S (ft)	+E/-W (ft)	Vertical Section (ft)	Dogleg Rate (°/100ft)	Build Rate (°/100ft)	Turn Rate (°/100ft)	
5,100.0	12.30	282.78	5,010.7	188.2	-829.7	301.3	0.00	0.00	0.00	
5,200.0	12.30	282.78	5,108.4	192.9	-850.5	308.9	0.00	0.00	0.00	
5,300.0	12.30	282.78	5,206.1	197.7	-871.3	316.4	0.00	0.00	0.00	
5,400.0	12.30	282.78	5,303.8	202.4	-892.1	324.0	0.00	0.00	0.00	
5,500.0	12.30	282.78	5,401.5	207.1	-912.8	331.5	0.00	0.00	0.00	
5,600.0	12.30	282.78	5,499.2	211.8	-933.6	339.1	0.00	0.00	0.00	
5,700.0	12.30	282.78	5,596.9	216.5	-954.4	346.6	0.00	0.00	0.00	
5,800.0	12.30	282.78	5,694.6	221.2	-975.2	354.2	0.00	0.00	0.00	
5,900.0	12.30	282.78	5,792.3	225.9	-996.0	361.7	0.00	0.00	0.00	
6,000.0	12.30	282.78	5,890.0	230.6	-1,016.7	369.3	0.00	0.00	0.00	
6,100.0	12.30	282.78	5,987.7	235.4	-1,037.5	376.8	0.00	0.00	0.00	
6,102.0	12.30	282.78	5,989.7	235.5	-1,037.9	377.0	0.00	0.00	0.00	
6,200.0	10.34	282.78	6,085.8	239.7	-1,056.7	383.8	2.00	-2.00	0.00	
6,300.0	8.34	282.78	6,184.4	243.3	-1,072.5	389.5	2.00	-2.00	0.00	
6,400.0	6.34	282.78	6,283.6	246.1	-1,085.0	394.0	2.00	-2.00	0.00	
6,500.0	4.34	282.78	6,383.2	248.2	-1,094.0	397.3	2.00	-2.00	0.00	
6,600.0	2.34	282.78	6,483.0	249.5	-1,099.7	399.4	2.00	-2.00	0.00	
6,700.0	0.34	282.78	6,583.0	250.0	-1,102.0	400.2	2.00	-2.00	0.00	
6,717.0	0.00	0.00	6,600.0	250.0	-1,102.1	400.2	2.00	-2.00	0.00	
6,800.0	0.00	0.00	6,683.0	250.0	-1,102.1	400.2	0.00	0.00	0.00	
6,848.8	0.00	0.00	6,731.8	250.0	-1,102.1	400.2	0.00	0.00	0.00	
<b>KOP #2</b>										
6,900.0	4.09	360.00	6,782.9	251.8	-1,102.1	402.1	8.00	8.00	0.00	
7,000.0	12.09	360.00	6,881.9	265.9	-1,102.1	416.0	8.00	8.00	0.00	
7,100.0	20.09	360.00	6,977.9	293.6	-1,102.1	443.4	8.00	8.00	0.00	
7,200.0	28.09	360.00	7,069.1	334.4	-1,102.1	483.8	8.00	8.00	0.00	
7,300.0	36.09	360.00	7,153.7	387.5	-1,102.1	536.4	8.00	8.00	0.00	
7,400.0	44.09	360.00	7,230.2	451.8	-1,102.1	600.1	8.00	8.00	0.00	
7,500.0	52.09	360.00	7,296.9	526.2	-1,102.1	673.8	8.00	8.00	0.00	
7,600.0	60.09	360.00	7,352.6	609.1	-1,102.1	755.9	8.00	8.00	0.00	
7,700.0	68.09	360.00	7,396.3	699.0	-1,102.1	844.9	8.00	8.00	0.00	
7,800.0	76.09	360.00	7,427.0	794.1	-1,102.1	939.1	8.00	8.00	0.00	
7,900.0	84.09	360.00	7,444.2	892.5	-1,102.1	1,036.6	8.00	8.00	0.00	
7,973.8	90.00	360.00	7,448.0	966.2	-1,102.1	1,109.5	8.00	8.00	0.00	
<b>End of Build - 7"</b>										
8,000.0	90.00	360.00	7,448.0	992.4	-1,102.1	1,135.5	0.01	0.01	0.00	
8,100.0	90.00	360.00	7,448.0	1,092.4	-1,102.1	1,234.5	0.00	0.00	0.00	
8,200.0	90.00	360.00	7,448.0	1,192.4	-1,102.1	1,333.5	0.00	0.00	0.00	
8,300.0	90.00	360.00	7,448.0	1,292.4	-1,102.1	1,432.6	0.00	0.00	0.00	
8,400.0	90.00	360.00	7,448.0	1,392.4	-1,102.1	1,531.6	0.00	0.00	0.00	
8,500.0	90.00	360.00	7,448.0	1,492.4	-1,102.1	1,630.6	0.00	0.00	0.00	
8,600.0	90.00	360.00	7,448.0	1,592.4	-1,102.1	1,729.7	0.00	0.00	0.00	
8,700.0	90.00	360.00	7,448.0	1,692.4	-1,102.1	1,828.7	0.00	0.00	0.00	
8,800.0	90.00	360.00	7,448.0	1,792.4	-1,102.1	1,927.7	0.00	0.00	0.00	
8,900.0	90.00	360.00	7,448.0	1,892.4	-1,102.1	2,026.8	0.00	0.00	0.00	
9,000.0	90.00	360.00	7,448.0	1,992.4	-1,102.1	2,125.8	0.00	0.00	0.00	
9,100.0	90.00	360.00	7,448.0	2,092.4	-1,102.1	2,224.9	0.00	0.00	0.00	
9,200.0	90.00	360.00	7,448.0	2,192.4	-1,102.1	2,323.9	0.00	0.00	0.00	
9,300.0	90.00	360.00	7,448.0	2,292.4	-1,102.1	2,422.9	0.00	0.00	0.00	
9,400.0	90.00	360.00	7,448.0	2,392.4	-1,102.1	2,522.0	0.00	0.00	0.00	
9,500.0	90.00	360.00	7,448.0	2,492.4	-1,102.1	2,621.0	0.00	0.00	0.00	
9,600.0	90.00	360.00	7,448.0	2,592.4	-1,102.1	2,720.0	0.00	0.00	0.00	
9,700.0	90.00	360.00	7,448.0	2,692.4	-1,102.1	2,819.1	0.00	0.00	0.00	

<b>Database:</b>	Landmark	<b>Local Co-ordinate Reference:</b>	Well SRC Gilbert A-14-11CHZM
<b>Company:</b>	Synergy Resources	<b>TVD Reference:</b>	WELL @ 4847.0ft (RKB-12')
<b>Project:</b>	SEC.14-T5N-R66W	<b>MD Reference:</b>	WELL @ 4847.0ft (RKB-12')
<b>Site:</b>	SRC Gilbert 42-14-11NHZ Pad Sec.14-T5N-R66W	<b>North Reference:</b>	True
<b>Well:</b>	SRC Gilbert A-14-11CHZM	<b>Survey Calculation Method:</b>	Minimum Curvature
<b>Wellbore:</b>	Wellbore #1		
<b>Design:</b>	Plan #2 (7-31-14)		

Planned Survey									
Measured Depth (ft)	Inclination (°)	Azimuth (°)	Vertical Depth (ft)	+N/-S (ft)	+E/-W (ft)	Vertical Section (ft)	Dogleg Rate (°/100ft)	Build Rate (°/100ft)	Turn Rate (°/100ft)
9,800.0	90.00	360.00	7,448.0	2,792.4	-1,102.1	2,918.1	0.00	0.00	0.00
9,900.0	90.00	360.00	7,448.0	2,892.4	-1,102.1	3,017.1	0.00	0.00	0.00
10,000.0	90.00	360.00	7,448.0	2,992.4	-1,102.1	3,116.2	0.00	0.00	0.00
10,100.0	90.00	360.00	7,448.0	3,092.4	-1,102.1	3,215.2	0.00	0.00	0.00
10,200.0	90.00	360.00	7,448.0	3,192.4	-1,102.1	3,314.3	0.00	0.00	0.00
10,300.0	90.00	360.00	7,448.0	3,292.4	-1,102.1	3,413.3	0.00	0.00	0.00
10,400.0	90.00	360.00	7,448.0	3,392.4	-1,102.1	3,512.3	0.00	0.00	0.00
10,500.0	90.00	360.00	7,448.0	3,492.4	-1,102.1	3,611.4	0.00	0.00	0.00
10,600.0	90.00	360.00	7,448.0	3,592.4	-1,102.1	3,710.4	0.00	0.00	0.00
10,700.0	90.00	360.00	7,448.0	3,692.4	-1,102.1	3,809.4	0.00	0.00	0.00
10,800.0	90.00	360.00	7,448.0	3,792.4	-1,102.1	3,908.5	0.00	0.00	0.00
10,900.0	90.00	360.00	7,448.0	3,892.4	-1,102.1	4,007.5	0.00	0.00	0.00
11,000.0	90.00	360.00	7,448.0	3,992.4	-1,102.1	4,106.5	0.00	0.00	0.00
11,100.0	90.00	360.00	7,448.0	4,092.4	-1,102.1	4,205.6	0.00	0.00	0.00
11,200.0	90.00	360.00	7,448.0	4,192.4	-1,102.1	4,304.6	0.00	0.00	0.00
11,300.0	90.00	360.00	7,448.0	4,292.4	-1,102.1	4,403.6	0.00	0.00	0.00
11,400.0	90.00	360.00	7,448.0	4,392.4	-1,102.1	4,502.7	0.00	0.00	0.00
11,500.0	90.00	360.00	7,448.0	4,492.4	-1,102.1	4,601.7	0.00	0.00	0.00
11,600.0	90.00	360.00	7,448.0	4,592.4	-1,102.1	4,700.8	0.00	0.00	0.00
11,700.0	90.00	360.00	7,448.0	4,692.4	-1,102.1	4,799.8	0.00	0.00	0.00
11,800.0	90.00	360.00	7,448.0	4,792.4	-1,102.1	4,898.8	0.00	0.00	0.00
11,900.0	90.00	360.00	7,448.0	4,892.4	-1,102.1	4,997.9	0.00	0.00	0.00
12,000.0	90.00	360.00	7,448.0	4,992.4	-1,102.1	5,096.9	0.00	0.00	0.00
12,100.0	90.00	360.00	7,448.0	5,092.4	-1,102.1	5,195.9	0.00	0.00	0.00
12,200.0	90.00	360.00	7,448.0	5,192.4	-1,102.1	5,295.0	0.00	0.00	0.00
12,300.0	90.00	360.00	7,448.0	5,292.4	-1,102.1	5,394.0	0.00	0.00	0.00
12,400.0	90.00	360.00	7,448.0	5,392.4	-1,102.1	5,493.0	0.00	0.00	0.00
12,500.0	90.00	360.00	7,448.0	5,492.4	-1,102.1	5,592.1	0.00	0.00	0.00
12,600.0	90.00	360.00	7,448.0	5,592.4	-1,102.1	5,691.1	0.00	0.00	0.00
12,700.0	90.00	360.00	7,448.0	5,692.4	-1,102.1	5,790.2	0.00	0.00	0.00
12,800.0	90.00	360.00	7,448.0	5,792.4	-1,102.1	5,889.2	0.00	0.00	0.00
12,900.0	90.00	360.00	7,448.0	5,892.4	-1,102.1	5,988.2	0.00	0.00	0.00
13,000.0	90.00	360.00	7,448.0	5,992.4	-1,102.1	6,087.3	0.00	0.00	0.00
13,100.0	90.00	360.00	7,448.0	6,092.4	-1,102.1	6,186.3	0.00	0.00	0.00
13,200.0	90.00	360.00	7,448.0	6,192.4	-1,102.1	6,285.3	0.00	0.00	0.00
13,300.0	90.00	360.00	7,448.0	6,292.4	-1,102.1	6,384.4	0.00	0.00	0.00
13,400.0	90.00	360.00	7,448.0	6,392.4	-1,102.1	6,483.4	0.00	0.00	0.00
13,500.0	90.00	360.00	7,448.0	6,492.4	-1,102.1	6,582.4	0.00	0.00	0.00
13,600.0	90.00	360.00	7,448.0	6,592.4	-1,102.1	6,681.5	0.00	0.00	0.00
13,700.0	90.00	360.00	7,448.0	6,692.4	-1,102.1	6,780.5	0.00	0.00	0.00
13,800.0	90.00	360.00	7,448.0	6,792.4	-1,102.1	6,879.5	0.00	0.00	0.00
13,900.0	90.00	360.00	7,448.0	6,892.4	-1,102.1	6,978.6	0.00	0.00	0.00
14,000.0	90.00	360.00	7,448.0	6,992.4	-1,102.1	7,077.6	0.00	0.00	0.00
14,100.0	90.00	360.00	7,448.0	7,092.4	-1,102.1	7,176.7	0.00	0.00	0.00
14,200.0	90.00	360.00	7,448.0	7,192.4	-1,102.1	7,275.7	0.00	0.00	0.00
14,300.0	90.00	360.00	7,448.0	7,292.4	-1,102.1	7,374.7	0.00	0.00	0.00
14,400.0	90.00	360.00	7,448.0	7,392.4	-1,102.1	7,473.8	0.00	0.00	0.00
14,500.0	90.00	360.00	7,448.0	7,492.4	-1,102.1	7,572.8	0.00	0.00	0.00
14,600.0	90.00	360.00	7,448.0	7,592.4	-1,102.1	7,671.8	0.00	0.00	0.00
14,700.0	90.00	360.00	7,448.0	7,692.4	-1,102.1	7,770.9	0.00	0.00	0.00
14,800.0	90.00	360.00	7,448.0	7,792.4	-1,102.1	7,869.9	0.00	0.00	0.00
14,886.7	90.00	360.00	7,448.0	7,879.0	-1,102.1	7,955.7	0.00	0.00	0.00

<b>Database:</b>	Landmark	<b>Local Co-ordinate Reference:</b>	Well SRC Gilbert A-14-11CHZM
<b>Company:</b>	Synergy Resources	<b>TVD Reference:</b>	WELL @ 4847.0ft (RKB-12')
<b>Project:</b>	SEC.14-T5N-R66W	<b>MD Reference:</b>	WELL @ 4847.0ft (RKB-12')
<b>Site:</b>	SRC Gilbert 42-14-11NHZ Pad Sec.14-T5N-R66W	<b>North Reference:</b>	True
<b>Well:</b>	SRC Gilbert A-14-11CHZM	<b>Survey Calculation Method:</b>	Minimum Curvature
<b>Wellbore:</b>	Wellbore #1		
<b>Design:</b>	Plan #2 (7-31-14)		

## Targets

### Target Name

- hit/miss target	Dip Angle	Dip Dir.	TVD	+N/-S	+E/-W	Northing	Easting	Latitude	Longitude
- Shape	(°)	(°)	(ft)	(ft)	(ft)	(ft)	(ft)		
SHL 2482'FSL & 2290' - plan hits target center - Point	0.00	0.00	1.0	0.0	0.0	1,389,104.70	3,210,782.68	40.399025	-104.743180
BHL 480'FNL & 2572' - plan hits target center - Point	0.00	0.00	7,448.0	7,879.0	-1,102.1	1,396,973.70	3,209,613.47	40.420652	-104.747138

## Casing Points

Measured Depth	Vertical Depth	Name	Casing Diameter	Hole Diameter
(ft)	(ft)		(")	(")
7,973.8	7,448.0	7"	7	7-1/2

## Plan Annotations

Measured Depth	Vertical Depth	Local Coordinates		Comment
(ft)	(ft)	+N/-S (ft)	+E/-W (ft)	
800.0	800.0	0.0	0.0	KOP #1
6,848.8	6,731.8	250.0	-1,102.1	KOP #2
7,973.8	7,448.0	966.2	-1,102.1	End of Build



## **Synergy Resources**

**SEC.14-T5N-R66W**

**SRC Gilbert 42-14-11NHZ Pad Sec.14-T5N-R66W**

**SRC Gilbert A-14-11CHZM**

**Wellbore #1**

**Plan #2 (7-31-14)**

## **Anticollision Report**

**31 July, 2014**





<b>Company:</b>	Synergy Resources	<b>Local Co-ordinate Reference:</b>	Well SRC Gilbert A-14-11CHZM
<b>Project:</b>	SEC.14-T5N-R66W	<b>TVD Reference:</b>	WELL @ 4847.0ft (RKB-12')
<b>Reference Site:</b>	SRC Gilbert 42-14-11NHZ Pad Sec.14-T5N-R66W	<b>MD Reference:</b>	WELL @ 4847.0ft (RKB-12')
<b>Site Error:</b>	0.0ft	<b>North Reference:</b>	True
<b>Reference Well:</b>	SRC Gilbert A-14-11CHZM	<b>Survey Calculation Method:</b>	Minimum Curvature
<b>Well Error:</b>	0.0ft	<b>Output errors are at</b>	2.00 sigma
<b>Reference Wellbore</b>	Wellbore #1	<b>Database:</b>	Landmark
<b>Reference Design:</b>	Plan #2 (7-31-14)	<b>Offset TVD Reference:</b>	Offset Datum

Offset Design		SRC Gilbert 42-14-11NHZ Pad Sec.14-T5N-R66W - SRC Gilbert 12-14-11CHZ - Wellbore #1 - Plan #1										Offset Site Error:		0.0 ft
Survey Program: 0-MWD												Offset Well Error:		0.0 ft
Reference		Offset		Semi Major Axis			Distance							Warning
Measured Depth	Vertical Depth	Measured Depth	Vertical Depth	Reference	Offset	Highside Toolface	Offset Wellbore Centre		Between Centres	Between Ellipses	Minimum Separation	Separation Factor		
(ft)	(ft)	(ft)	(ft)	(ft)	(ft)	(°)	+N/-S (ft)	+E/-W (ft)	(ft)	(ft)	(ft)			
1,100.0	1,099.5	1,082.2	1,075.8	2.3	2.8	-9.30	9.8	-125.1	113.2	108.6	4.65	24.357		
1,200.0	1,198.7	1,177.4	1,167.8	2.6	3.2	-9.49	12.6	-148.9	126.5	121.4	5.10	24.824		
1,300.0	1,297.5	1,272.1	1,258.7	2.9	3.7	-9.77	15.7	-175.7	139.7	134.2	5.56	25.135		
1,400.0	1,395.6	1,366.4	1,348.2	3.2	4.3	-10.14	19.2	-205.2	152.8	146.8	6.04	25.308		
1,500.0	1,493.3	1,460.2	1,436.2	3.6	4.9	-10.52	23.0	-237.5	167.0	160.4	6.56	25.455		
1,600.0	1,591.0	1,554.0	1,523.1	4.0	5.6	-10.77	27.1	-272.6	184.3	177.2	7.10	25.959		
1,700.0	1,688.7	1,651.1	1,612.4	4.4	6.4	-10.95	31.6	-310.4	203.2	195.6	7.66	26.532		
1,800.0	1,786.4	1,749.3	1,702.7	4.8	7.2	-11.09	36.0	-348.6	222.2	213.9	8.23	26.988		
1,900.0	1,884.2	1,847.5	1,793.1	5.2	8.0	-11.22	40.5	-386.9	241.1	232.3	8.81	27.359		
2,000.0	1,981.9	1,945.7	1,883.4	5.7	8.8	-11.32	45.0	-425.1	260.0	250.6	9.40	27.664		
2,100.0	2,079.6	2,043.9	1,973.7	6.1	9.6	-11.41	49.5	-463.3	279.0	269.0	9.99	27.918		
2,200.0	2,177.3	2,142.1	2,064.0	6.5	10.4	-11.49	54.0	-501.5	297.9	287.3	10.59	28.131		
2,300.0	2,275.0	2,240.3	2,154.4	7.0	11.2	-11.56	58.5	-539.8	316.9	305.7	11.19	28.310		
2,400.0	2,372.7	2,338.4	2,244.7	7.4	12.1	-11.63	63.0	-578.0	335.8	324.0	11.80	28.463		
2,500.0	2,470.4	2,436.6	2,335.0	7.9	12.9	-11.68	67.5	-616.2	354.8	342.4	12.41	28.595		
2,600.0	2,568.1	2,534.8	2,425.4	8.4	13.7	-11.73	72.0	-654.5	373.7	360.7	13.02	28.709		
2,700.0	2,665.8	2,633.0	2,515.7	8.8	14.5	-11.78	76.4	-692.7	392.7	379.0	13.63	28.808		
2,800.0	2,763.5	2,731.2	2,606.0	9.3	15.4	-11.82	80.9	-730.9	411.6	397.4	14.25	28.894		
2,900.0	2,861.2	2,829.4	2,696.3	9.7	16.2	-11.85	85.4	-769.2	430.6	415.7	14.86	28.970		
3,000.0	2,958.9	2,927.6	2,786.7	10.2	17.0	-11.89	89.9	-807.4	449.5	434.0	15.48	29.038		
3,100.0	3,056.6	3,025.8	2,877.0	10.7	17.9	-11.92	94.4	-845.6	468.5	452.4	16.10	29.097		
3,200.0	3,154.3	3,124.0	2,967.3	11.1	18.7	-11.95	98.9	-883.8	487.4	470.7	16.72	29.151		
3,300.0	3,252.0	3,222.1	3,057.7	11.6	19.5	-11.98	103.4	-922.1	506.4	489.0	17.34	29.198		
3,400.0	3,349.7	3,320.3	3,148.0	12.0	20.3	-12.00	107.9	-960.3	525.3	507.3	17.96	29.241		
3,500.0	3,447.4	3,418.5	3,238.3	12.5	21.2	-12.02	112.4	-998.5	544.3	525.7	18.59	29.280		
3,600.0	3,545.1	3,516.7	3,328.6	13.0	22.0	-12.05	116.9	-1,036.8	563.2	544.0	19.21	29.315		
3,700.0	3,642.8	3,614.9	3,419.0	13.4	22.8	-12.07	121.3	-1,075.0	582.1	562.3	19.84	29.347		
3,800.0	3,740.5	3,713.1	3,509.3	13.9	23.7	-12.08	125.8	-1,113.2	601.1	580.6	20.46	29.376		
3,900.0	3,838.2	3,811.3	3,599.6	14.4	24.5	-12.10	130.3	-1,151.5	620.0	599.0	21.09	29.402		
4,000.0	3,935.9	3,909.5	3,690.0	14.8	25.3	-12.12	134.8	-1,189.7	639.0	617.3	21.72	29.426		
4,100.0	4,033.6	4,007.6	3,780.3	15.3	26.2	-12.13	139.3	-1,227.9	657.9	635.6	22.34	29.448		
4,200.0	4,131.4	4,105.8	3,870.6	15.8	27.0	-12.15	143.8	-1,266.1	676.9	653.9	22.97	29.469		
4,300.0	4,229.1	4,204.0	3,960.9	16.2	27.8	-12.16	148.3	-1,304.4	695.8	672.2	23.60	29.487		
4,400.0	4,326.8	4,302.2	4,051.3	16.7	28.7	-12.18	152.8	-1,342.6	714.8	690.6	24.23	29.505		
4,500.0	4,424.5	4,400.4	4,141.6	17.2	29.5	-12.19	157.3	-1,380.8	733.7	708.9	24.85	29.521		
4,600.0	4,522.2	4,498.6	4,231.9	17.6	30.3	-12.20	161.7	-1,419.1	752.7	727.2	25.48	29.535		
4,700.0	4,619.9	4,596.8	4,322.3	18.1	31.2	-12.21	166.2	-1,457.3	771.6	745.5	26.11	29.549		
4,800.0	4,717.6	4,695.0	4,412.6	18.6	32.0	-12.22	170.7	-1,495.5	790.6	763.8	26.74	29.562		
4,900.0	4,815.3	4,793.2	4,502.9	19.0	32.8	-12.23	175.2	-1,533.8	809.5	782.2	27.37	29.574		
5,000.0	4,913.0	4,891.3	4,593.2	19.5	33.7	-12.24	179.7	-1,572.0	828.5	800.5	28.00	29.585		
5,100.0	5,010.7	4,989.5	4,683.6	20.0	34.5	-12.25	184.2	-1,610.2	847.4	818.8	28.63	29.595		
5,200.0	5,108.4	5,087.7	4,773.9	20.4	35.3	-12.26	188.7	-1,648.4	866.4	837.1	29.26	29.605		
5,300.0	5,206.1	5,185.9	4,864.2	20.9	36.2	-12.27	193.2	-1,686.7	885.3	855.4	29.90	29.614		
5,400.0	5,303.8	5,284.1	4,954.6	21.4	37.0	-12.28	197.7	-1,724.9	904.3	873.7	30.53	29.622		
5,500.0	5,401.5	5,382.3	5,044.9	21.9	37.8	-12.29	202.2	-1,763.1	923.2	892.1	31.16	29.630		
5,600.0	5,499.2	5,480.5	5,135.2	22.3	38.7	-12.29	206.6	-1,801.4	942.2	910.4	31.79	29.638		
5,700.0	5,596.9	5,578.7	5,225.5	22.8	39.5	-12.30	211.1	-1,839.6	961.1	928.7	32.42	29.645		
5,800.0	5,694.6	5,676.8	5,315.9	23.3	40.3	-12.31	215.6	-1,877.8	980.1	947.0	33.05	29.651		
5,900.0	5,792.3	5,775.0	5,406.2	23.7	41.2	-12.32	220.1	-1,916.1	999.0	965.3	33.69	29.657		

SRC Gilbert 42-14-11NHZ Pad Sec.14-T5N-R66W - SRC Gilbert 12-14-11NHZ - Wellbore #1 - Plan #1													Offset Site Error: 0.0 ft	
Survey Program: 0-MWD													Offset Well Error: 0.0 ft	
Reference		Offset		Semi Major Axis			Distance						Warning	
Measured Depth	Vertical Depth	Measured Depth	Vertical Depth	Reference	Offset	Highside Toolface	Offset Wellbore Centre		Between Centres	Between Ellipses	Minimum Separation	Separation Factor		
(ft)	(ft)	(ft)	(ft)	(ft)	(ft)	(°)	+N/-S (ft)	+E/-W (ft)	(ft)	(ft)	(ft)			
0.0	0.0	2.0	2.0	0.0	0.0	-89.70	0.4	-67.4	67.4	67.4	0.00	N/A		
100.0	100.0	102.0	102.0	0.1	0.1	-89.70	0.4	-67.4	67.4	67.2	0.23	294.006		
166.0	166.0	168.0	168.0	0.3	0.3	-89.70	0.4	-67.4	67.4	66.9	0.53	128.171 CC		
200.0	200.0	202.0	202.0	0.3	0.3	-89.70	0.4	-67.4	67.4	66.7	0.68	99.342 ES		
300.0	300.0	300.0	300.0	0.6	0.6	-89.58	0.5	-69.1	69.2	68.1	1.12	62.038		
400.0	400.0	397.1	396.9	0.8	0.8	-89.27	0.9	-74.2	74.3	72.8	1.56	47.712		
500.0	500.0	494.0	493.5	1.0	1.0	-88.84	1.7	-82.4	82.9	80.8	2.03	40.903		
600.0	600.0	590.4	589.1	1.2	1.3	-88.36	2.7	-93.9	94.8	92.2	2.53	37.528		
700.0	700.0	685.8	683.5	1.5	1.6	-87.91	4.0	-108.3	110.0	106.9	3.06	35.916		
800.0	800.0	780.1	776.2	1.7	2.0	-87.50	5.5	-125.7	128.5	124.8	3.64	35.282 SF		
900.0	900.0	873.6	867.4	1.9	2.4	-9.98	7.3	-145.9	148.5	144.6	3.84	38.712		
1,000.0	999.8	966.5	957.4	2.1	2.8	-9.89	9.3	-168.9	168.3	164.0	4.28	39.319		
1,100.0	1,099.5	1,058.8	1,046.0	2.3	3.3	-9.94	11.5	-194.7	187.9	183.2	4.74	39.670		
1,200.0	1,198.7	1,150.6	1,133.2	2.6	3.9	-10.10	14.0	-223.1	207.3	202.1	5.21	39.820		
1,300.0	1,297.5	1,241.8	1,219.0	2.9	4.5	-10.33	16.8	-254.0	226.5	220.8	5.69	39.795		
1,400.0	1,395.6	1,332.5	1,303.3	3.2	5.2	-10.61	19.7	-287.5	245.4	239.2	6.18	39.694		
1,500.0	1,493.3	1,422.5	1,385.8	3.6	6.0	-10.96	22.8	-323.3	265.3	258.5	6.72	39.453		
1,600.0	1,591.0	1,511.3	1,466.0	4.0	6.8	-11.22	26.2	-361.2	288.2	280.9	7.28	39.589		
1,700.0	1,688.7	1,600.0	1,544.9	4.4	7.6	-11.41	29.7	-401.4	314.0	306.2	7.85	40.010		
1,800.0	1,786.4	1,684.7	1,619.1	4.8	8.5	-11.54	33.3	-442.2	342.8	334.4	8.42	40.718		
1,900.0	1,884.2	1,769.0	1,691.8	5.2	9.4	-11.61	37.0	-484.8	374.4	365.4	9.00	41.602		
2,000.0	1,981.9	1,858.3	1,767.5	5.7	10.4	-11.66	41.2	-531.9	408.3	398.7	9.60	42.508		
2,100.0	2,079.6	1,952.3	1,847.1	6.1	11.6	-11.69	45.5	-581.7	442.4	432.2	10.23	43.243		
2,200.0	2,177.3	2,046.3	1,926.7	6.5	12.7	-11.72	49.9	-631.4	476.6	465.8	10.86	43.879		
2,300.0	2,275.0	2,140.2	2,006.3	7.0	13.8	-11.75	54.3	-681.2	510.8	499.3	11.50	44.425		
2,400.0	2,372.7	2,234.2	2,085.9	7.4	14.9	-11.77	58.7	-730.9	545.0	532.8	12.14	44.899		
2,500.0	2,470.4	2,328.2	2,165.5	7.9	16.0	-11.79	63.0	-780.7	579.1	566.3	12.78	45.312		
2,600.0	2,568.1	2,422.2	2,245.1	8.4	17.1	-11.81	67.4	-830.5	613.3	599.9	13.43	45.675		
2,700.0	2,665.8	2,516.2	2,324.7	8.8	18.3	-11.83	71.8	-880.2	647.5	633.4	14.08	45.995		
2,800.0	2,763.5	2,610.1	2,404.3	9.3	19.4	-11.84	76.2	-930.0	681.6	666.9	14.73	46.280		
2,900.0	2,861.2	2,704.1	2,484.0	9.7	20.5	-11.86	80.5	-979.7	715.8	700.4	15.38	46.535		
3,000.0	2,958.9	2,798.1	2,563.6	10.2	21.7	-11.87	84.9	-1,029.5	750.0	733.9	16.04	46.763		
3,100.0	3,056.6	2,892.1	2,643.2	10.7	22.8	-11.88	89.3	-1,079.3	784.2	767.5	16.70	46.969		
3,200.0	3,154.3	2,986.1	2,722.8	11.1	23.9	-11.89	93.6	-1,129.0	818.3	801.0	17.35	47.156		
3,300.0	3,252.0	3,080.0	2,802.4	11.6	25.1	-11.90	98.0	-1,178.8	852.5	834.5	18.01	47.325		
3,400.0	3,349.7	3,174.0	2,882.0	12.0	26.2	-11.91	102.4	-1,228.5	886.7	868.0	18.67	47.480		
3,500.0	3,447.4	3,268.0	2,961.6	12.5	27.3	-11.92	106.8	-1,278.3	920.8	901.5	19.34	47.622		
3,600.0	3,545.1	3,362.0	3,041.2	13.0	28.5	-11.92	111.1	-1,328.1	955.0	935.0	20.00	47.752		
3,700.0	3,642.8	3,456.0	3,120.8	13.4	29.6	-11.93	115.5	-1,377.8	989.2	968.5	20.66	47.872		

<b>Company:</b>	Synergy Resources	<b>Local Co-ordinate Reference:</b>	Well SRC Gilbert A-14-11CHZM
<b>Project:</b>	SEC.14-T5N-R66W	<b>TVD Reference:</b>	WELL @ 4847.0ft (RKB-12')
<b>Reference Site:</b>	SRC Gilbert 42-14-11NHZ Pad Sec.14-T5N-R66W	<b>MD Reference:</b>	WELL @ 4847.0ft (RKB-12')
<b>Site Error:</b>	0.0ft	<b>North Reference:</b>	True
<b>Reference Well:</b>	SRC Gilbert A-14-11CHZM	<b>Survey Calculation Method:</b>	Minimum Curvature
<b>Well Error:</b>	0.0ft	<b>Output errors are at</b>	2.00 sigma
<b>Reference Wellbore</b>	Wellbore #1	<b>Database:</b>	Landmark
<b>Reference Design:</b>	Plan #2 (7-31-14)	<b>Offset TVD Reference:</b>	Offset Datum

Offset Design SRC Gilbert 42-14-11NHZ Pad Sec.14-T5N-R66W - SRC Gilbert 32-14-11HNZ - Wellbore #1 - Plan #1													Offset Site Error:	0.0 ft
Survey Program: 0-MWD													Offset Well Error:	0.0 ft
Measured Depth (ft)	Vertical Depth (ft)	Measured Depth (ft)	Vertical Depth (ft)	Reference	Offset	Semi Major Axis	Highside Toolface (°)	Offset Wellbore Centre +N/-S (ft)	Offset Wellbore Centre +E/-W (ft)	Between Centres (ft)	Between Ellipses (ft)	Minimum Separation (ft)	Separation Factor	Warning
0.0	0.0	0.0	0.0	0.0	0.0	90.62	90.62	-0.7	67.4	67.4				
100.0	100.0	100.0	100.0	0.1	0.1	90.62	90.62	-0.7	67.4	67.4	67.2	0.22	299.899	
200.0	200.0	200.0	200.0	0.3	0.3	90.62	90.62	-0.7	67.4	67.4	66.7	0.67	99.966	
300.0	300.0	300.0	300.0	0.6	0.6	90.62	90.62	-0.7	67.4	67.4	66.3	1.12	59.980	
400.0	400.0	400.0	400.0	0.8	0.8	90.62	90.62	-0.7	67.4	67.4	65.8	1.57	42.843	
500.0	500.0	500.0	500.0	1.0	1.0	90.62	90.62	-0.7	67.4	67.4	65.4	2.02	33.322	
600.0	600.0	600.2	600.2	1.2	1.2	89.13	89.13	1.0	67.2	67.2	64.7	2.47	27.169	
700.0	700.0	700.2	700.1	1.5	1.5	84.66	84.66	6.2	66.6	66.9	64.0	2.93	22.843	
716.4	716.4	716.6	716.4	1.5	1.5	83.64	83.64	7.4	66.5	66.9	63.9	3.00	22.269 CC, ES	
800.0	800.0	799.8	799.2	1.7	1.7	77.26	77.26	14.8	65.7	67.3	63.9	3.39	19.881	
900.0	900.0	898.8	897.5	1.9	2.0	145.45	145.45	26.7	64.3	71.1	67.3	3.86	18.429	
1,000.0	999.8	998.0	995.9	2.1	2.2	138.49	138.49	39.5	62.9	79.5	75.1	4.34	18.311 SF	
1,100.0	1,099.5	1,097.2	1,094.2	2.3	2.5	134.42	134.42	52.2	61.5	91.1	86.3	4.83	18.863	
1,200.0	1,198.7	1,196.1	1,192.3	2.6	2.8	132.63	132.63	64.9	60.1	105.4	100.1	5.34	19.753	
1,300.0	1,297.5	1,294.7	1,290.1	2.9	3.1	132.43	132.43	77.6	58.7	122.1	116.2	5.86	20.821	
1,400.0	1,395.6	1,392.9	1,387.4	3.2	3.4	133.23	133.23	90.2	57.3	141.1	134.7	6.41	21.998	
1,500.0	1,493.3	1,490.6	1,484.4	3.6	3.7	134.60	134.60	102.8	55.9	161.6	154.6	7.00	23.106	
1,600.0	1,591.0	1,588.4	1,581.4	4.0	4.0	135.70	135.70	115.4	54.5	182.3	174.7	7.59	24.010	
1,700.0	1,688.7	1,686.2	1,678.3	4.4	4.3	136.58	136.58	127.9	53.1	203.0	194.8	8.20	24.758	
1,800.0	1,786.4	1,784.0	1,775.3	4.8	4.6	137.29	137.29	140.5	51.7	223.8	215.0	8.82	25.384	
1,900.0	1,884.2	1,881.8	1,872.3	5.2	5.0	137.89	137.89	153.1	50.3	244.6	235.1	9.44	25.916	
2,000.0	1,981.9	1,979.6	1,969.2	5.7	5.3	138.39	138.39	165.7	48.9	265.4	255.3	10.06	26.373	
2,100.0	2,079.6	2,077.4	2,066.2	6.1	5.6	138.82	138.82	178.2	47.5	286.2	275.5	10.69	26.768	
2,200.0	2,177.3	2,175.2	2,163.2	6.5	5.9	139.19	139.19	190.8	46.1	307.1	295.7	11.33	27.113	
2,300.0	2,275.0	2,272.9	2,260.1	7.0	6.2	139.51	139.51	203.4	44.7	327.9	315.9	11.96	27.416	
2,400.0	2,372.7	2,370.7	2,357.1	7.4	6.5	139.79	139.79	216.0	43.3	348.8	336.2	12.60	27.685	
2,500.0	2,470.4	2,469.7	2,455.2	7.9	6.8	140.07	140.07	228.6	41.9	369.6	356.4	13.23	27.938	
2,600.0	2,568.1	2,572.1	2,557.1	8.4	7.1	140.69	140.69	239.0	40.7	389.6	375.8	13.79	28.247	
2,700.0	2,665.8	2,674.7	2,659.5	8.8	7.3	141.75	141.75	245.8	39.9	408.5	394.2	14.30	28.559	
2,800.0	2,763.5	2,777.1	2,761.8	9.3	7.5	143.18	143.18	249.0	39.6	426.5	411.7	14.77	28.881	
2,900.0	2,861.2	2,876.5	2,861.2	9.7	7.6	144.81	144.81	249.3	39.6	443.9	428.7	15.20	29.209	
3,000.0	2,958.9	2,974.2	2,958.9	10.2	7.8	146.32	146.32	249.3	39.6	461.6	446.0	15.63	29.525	
3,100.0	3,056.6	3,071.9	3,056.6	10.7	8.0	147.73	147.73	249.3	39.6	479.6	463.5	16.07	29.840	
3,200.0	3,154.3	3,169.6	3,154.3	11.1	8.1	149.03	149.03	249.3	39.6	497.9	481.4	16.51	30.157	
3,300.0	3,252.0	3,267.3	3,252.0	11.6	8.3	150.24	150.24	249.3	39.6	516.4	499.4	16.94	30.474	
3,400.0	3,349.7	3,365.0	3,349.7	12.0	8.5	151.36	151.36	249.3	39.6	535.1	517.7	17.38	30.788	
3,500.0	3,447.4	3,462.7	3,447.4	12.5	8.7	152.42	152.42	249.3	39.6	553.9	536.1	17.81	31.098	
3,600.0	3,545.1	3,560.4	3,545.1	13.0	8.9	153.40	153.40	249.3	39.6	573.0	554.8	18.25	31.402	
3,700.0	3,642.8	3,658.1	3,642.8	13.4	9.1	154.32	154.32	249.3	39.6	592.2	573.5	18.68	31.698	
3,800.0	3,740.5	3,755.8	3,740.5	13.9	9.2	155.18	155.18	249.3	39.6	611.6	592.4	19.12	31.988	
3,900.0	3,838.2	3,853.5	3,838.2	14.4	9.4	155.99	155.99	249.3	39.6	631.0	611.5	19.56	32.269	
4,000.0	3,935.9	3,951.2	3,935.9	14.8	9.6	156.75	156.75	249.3	39.6	650.6	630.6	19.99	32.542	
4,100.0	4,033.6	4,048.9	4,033.6	15.3	9.8	157.46	157.46	249.3	39.6	670.3	649.9	20.43	32.806	
4,200.0	4,131.4	4,146.6	4,131.4	15.8	10.0	158.14	158.14	249.3	39.6	690.1	669.2	20.87	33.063	
4,300.0	4,229.1	4,244.4	4,229.1	16.2	10.2	158.78	158.78	249.3	39.6	710.0	688.7	21.31	33.310	
4,400.0	4,326.8	4,342.1	4,326.8	16.7	10.4	159.38	159.38	249.3	39.6	729.9	708.2	21.76	33.550	
4,500.0	4,424.5	4,439.8	4,424.5	17.2	10.6	159.95	159.95	249.3	39.6	750.0	727.8	22.20	33.781	
4,600.0	4,522.2	4,537.5	4,522.2	17.6	10.8	160.50	160.50	249.3	39.6	770.1	747.4	22.65	34.004	
4,700.0	4,619.9	4,635.2	4,619.9	18.1	11.0	161.01	161.01	249.3	39.6	790.2	767.1	23.09	34.220	
4,800.0	4,717.6	4,732.9	4,717.6	18.6	11.2	161.50	161.50	249.3	39.6	810.5	786.9	23.54	34.428	
4,900.0	4,815.3	4,830.6	4,815.3	19.0	11.4	161.96	161.96	249.3	39.6	830.7	806.7	23.99	34.629	

CC - Min centre to center distance or convergent point, SF - min separation factor, ES - min ellipse separation

<b>Company:</b>	Synergy Resources	<b>Local Co-ordinate Reference:</b>	Well SRC Gilbert A-14-11CHZM
<b>Project:</b>	SEC.14-T5N-R66W	<b>TVD Reference:</b>	WELL @ 4847.0ft (RKB-12')
<b>Reference Site:</b>	SRC Gilbert 42-14-11NHZ Pad Sec.14-T5N-R66W	<b>MD Reference:</b>	WELL @ 4847.0ft (RKB-12')
<b>Site Error:</b>	0.0ft	<b>North Reference:</b>	True
<b>Reference Well:</b>	SRC Gilbert A-14-11CHZM	<b>Survey Calculation Method:</b>	Minimum Curvature
<b>Well Error:</b>	0.0ft	<b>Output errors are at</b>	2.00 sigma
<b>Reference Wellbore</b>	Wellbore #1	<b>Database:</b>	Landmark
<b>Reference Design:</b>	Plan #2 (7-31-14)	<b>Offset TVD Reference:</b>	Offset Datum

Offset Design										SRC Gilbert 42-14-11NHZ Pad Sec.14-T5N-R66W - SRC Gilbert 32-14-11HNZ - Wellbore #1 - Plan #1				Offset Site Error:		0.0 ft	
Survey Program: 0-MWD														Offset Well Error:		0.0 ft	
Reference		Offset		Semi Major Axis			Distance							Warning			
Measured Depth	Vertical Depth	Measured Depth	Vertical Depth	Reference	Offset	Highside Toolface	Offset Wellbore Centre		Between Centres	Between Ellipses	Minimum Separation	Separation Factor					
(ft)	(ft)	(ft)	(ft)	(ft)	(ft)	(°)	+N/-S (ft)	+E/-W (ft)	(ft)	(ft)	(ft)						
5,000.0	4,913.0	4,928.3	4,913.0	19.5	11.6	162.41	249.3	39.6	851.1	826.6	24.44	34.822					
5,100.0	5,010.7	5,026.0	5,010.7	20.0	11.8	162.83	249.3	39.6	871.4	846.5	24.89	35.009					
5,200.0	5,108.4	5,123.7	5,108.4	20.4	12.0	163.23	249.3	39.6	891.9	866.5	25.34	35.190					
5,300.0	5,206.1	5,221.4	5,206.1	20.9	12.2	163.62	249.3	39.6	912.3	886.5	25.80	35.364					
5,400.0	5,303.8	5,319.1	5,303.8	21.4	12.4	163.99	249.3	39.6	932.8	906.6	26.25	35.532					
5,500.0	5,401.5	5,416.8	5,401.5	21.9	12.6	164.34	249.3	39.6	953.3	926.6	26.71	35.694					
5,600.0	5,499.2	5,514.5	5,499.2	22.3	12.8	164.68	249.3	39.6	973.9	946.7	27.17	35.851					
5,700.0	5,596.9	5,612.2	5,596.9	22.8	13.0	165.00	249.3	39.6	994.5	966.9	27.62	36.003					

<b>Company:</b>	Synergy Resources	<b>Local Co-ordinate Reference:</b>	Well SRC Gilbert A-14-11CHZM
<b>Project:</b>	SEC.14-T5N-R66W	<b>TVD Reference:</b>	WELL @ 4847.0ft (RKB-12')
<b>Reference Site:</b>	SRC Gilbert 42-14-11NHZ Pad Sec.14-T5N-R66W	<b>MD Reference:</b>	WELL @ 4847.0ft (RKB-12')
<b>Site Error:</b>	0.0ft	<b>North Reference:</b>	True
<b>Reference Well:</b>	SRC Gilbert A-14-11CHZM	<b>Survey Calculation Method:</b>	Minimum Curvature
<b>Well Error:</b>	0.0ft	<b>Output errors are at</b>	2.00 sigma
<b>Reference Wellbore</b>	Wellbore #1	<b>Database:</b>	Landmark
<b>Reference Design:</b>	Plan #2 (7-31-14)	<b>Offset TVD Reference:</b>	Offset Datum

Offset Design		SRC Gilbert 42-14-11NHZ Pad Sec.14-T5N-R66W - SRC Gilbert 42-14-11CHZ - Wellbore #1 - Plan #2										Offset Site Error:		0.0 ft		
Survey Program: 0-MWD														Offset Well Error:		0.0 ft
Reference		Offset		Semi Major Axis		Distance								Warning		
Measured Depth	Vertical Depth	Measured Depth	Vertical Depth	Reference	Offset	Highside Toolface	Offset Wellbore Centre		Between Centres	Between Ellipses	Minimum Separation	Separation Factor				
(ft)	(ft)	(ft)	(ft)	(ft)	(ft)	(°)	+N/-S (ft)	+E/-W (ft)	(ft)	(ft)	(ft)					
0.0	0.0	0.0	0.0	0.0	0.0	90.91	-0.4	22.6	22.6							
100.0	100.0	100.0	100.0	0.1	0.1	90.91	-0.4	22.6	22.6	22.3	0.22	100.387				
200.0	200.0	200.0	200.0	0.3	0.3	90.91	-0.4	22.6	22.6	21.9	0.67	33.462				
300.0	300.0	300.0	300.0	0.6	0.6	90.91	-0.4	22.6	22.6	21.4	1.12	20.077				
400.0	400.0	400.0	400.0	0.8	0.8	90.91	-0.4	22.6	22.6	21.0	1.57	14.341				
500.0	500.0	500.0	500.0	1.0	1.0	90.91	-0.4	22.6	22.6	20.5	2.02	11.154				
600.0	600.0	600.0	600.0	1.2	1.2	90.91	-0.4	22.6	22.6	20.1	2.47	9.126				
700.0	700.0	700.0	700.0	1.5	1.5	90.91	-0.4	22.6	22.6	19.6	2.92	7.722				
800.0	800.0	800.0	800.0	1.7	1.7	90.91	-0.4	22.6	22.6	19.2	3.37	6.692 CC, ES				
900.0	900.0	900.0	900.0	1.9	1.9	168.97	-0.4	22.6	24.3	20.5	3.81	6.370 SF				
1,000.0	999.8	999.8	999.8	2.1	2.1	170.91	-0.4	22.6	29.4	25.2	4.24	6.940				
1,100.0	1,099.5	1,099.5	1,099.5	2.3	2.4	172.96	-0.4	22.6	38.1	33.4	4.67	8.150				
1,200.0	1,198.7	1,198.7	1,198.7	2.6	2.6	174.64	-0.4	22.6	50.2	45.1	5.10	9.843				
1,300.0	1,297.5	1,297.5	1,297.5	2.9	2.8	175.89	-0.4	22.6	65.8	60.2	5.52	11.906				
1,400.0	1,395.6	1,395.6	1,395.6	3.2	3.0	176.79	-0.4	22.6	84.8	78.9	5.95	14.259				
1,500.0	1,493.3	1,493.3	1,493.3	3.6	3.2	177.43	-0.4	22.6	106.1	99.7	6.39	16.589				
1,600.0	1,591.0	1,587.6	1,587.6	4.0	3.4	177.55	0.1	23.8	128.6	121.7	6.83	18.810				
1,700.0	1,688.7	1,680.3	1,680.2	4.4	3.6	177.07	1.4	27.9	153.8	146.6	7.27	21.147				
1,800.0	1,786.4	1,771.6	1,771.2	4.8	3.8	176.28	3.7	34.8	181.9	174.1	7.72	23.568				
1,900.0	1,884.2	1,861.2	1,860.2	5.2	4.1	175.33	6.8	44.1	212.6	204.5	8.16	26.054				
2,000.0	1,981.9	1,949.0	1,947.2	5.7	4.3	174.33	10.7	55.9	246.1	237.4	8.61	28.585				
2,100.0	2,079.6	2,039.2	2,036.1	6.1	4.5	173.32	15.4	70.2	281.8	272.7	9.07	31.078				
2,200.0	2,177.3	2,132.4	2,127.9	6.5	4.8	172.49	20.4	85.2	317.8	308.3	9.53	33.360				
2,300.0	2,275.0	2,225.6	2,219.8	7.0	5.1	171.83	25.4	100.2	353.9	343.9	9.99	35.420				
2,400.0	2,372.7	2,318.8	2,311.6	7.4	5.3	171.28	30.4	115.2	390.0	379.5	10.46	37.269				
2,500.0	2,470.4	2,411.9	2,403.4	7.9	5.6	170.84	35.4	130.2	426.1	415.2	10.94	38.955				
2,600.0	2,568.1	2,505.1	2,495.3	8.4	5.9	170.46	40.3	145.2	462.3	450.9	11.42	40.488				
2,700.0	2,665.8	2,598.3	2,587.1	8.8	6.3	170.13	45.3	160.2	498.4	486.5	11.90	41.887				
2,800.0	2,763.5	2,691.5	2,679.0	9.3	6.6	169.85	50.3	175.2	534.6	522.2	12.39	43.167				
2,900.0	2,861.2	2,784.7	2,770.8	9.7	6.9	169.61	55.3	190.2	570.8	558.0	12.87	44.342				
3,000.0	2,958.9	2,877.9	2,862.7	10.2	7.2	169.39	60.3	205.2	607.0	593.7	13.36	45.424				
3,100.0	3,056.6	2,971.1	2,954.5	10.7	7.6	169.20	65.2	220.2	643.2	629.4	13.86	46.424				
3,200.0	3,154.3	3,064.3	3,046.3	11.1	7.9	169.03	70.2	235.2	679.4	665.1	14.35	47.349				
3,300.0	3,252.0	3,157.5	3,138.2	11.6	8.2	168.88	75.2	250.2	715.7	700.8	14.85	48.207				
3,400.0	3,349.7	3,250.7	3,230.0	12.0	8.6	168.74	80.2	265.2	751.9	736.5	15.34	49.005				
3,500.0	3,447.4	3,343.9	3,321.9	12.5	8.9	168.61	85.2	280.2	788.1	772.3	15.84	49.749				
3,600.0	3,545.1	3,437.1	3,413.7	13.0	9.2	168.50	90.1	295.2	824.3	808.0	16.34	50.444				
3,700.0	3,642.8	3,530.3	3,505.6	13.4	9.6	168.39	95.1	310.3	860.6	843.7	16.84	51.094				
3,800.0	3,740.5	3,623.5	3,597.4	13.9	9.9	168.29	100.1	325.3	896.8	879.5	17.35	51.703				
3,900.0	3,838.2	3,716.7	3,689.2	14.4	10.3	168.21	105.1	340.3	933.0	915.2	17.85	52.275				
4,000.0	3,935.9	3,809.9	3,781.1	14.8	10.6	168.12	110.1	355.3	969.3	950.9	18.35	52.813				

<b>Company:</b>	Synergy Resources	<b>Local Co-ordinate Reference:</b>	Well SRC Gilbert A-14-11CHZM
<b>Project:</b>	SEC.14-T5N-R66W	<b>TVD Reference:</b>	WELL @ 4847.0ft (RKB-12')
<b>Reference Site:</b>	SRC Gilbert 42-14-11NHZ Pad Sec.14-T5N-R66W	<b>MD Reference:</b>	WELL @ 4847.0ft (RKB-12')
<b>Site Error:</b>	0.0ft	<b>North Reference:</b>	True
<b>Reference Well:</b>	SRC Gilbert A-14-11CHZM	<b>Survey Calculation Method:</b>	Minimum Curvature
<b>Well Error:</b>	0.0ft	<b>Output errors are at</b>	2.00 sigma
<b>Reference Wellbore</b>	Wellbore #1	<b>Database:</b>	Landmark
<b>Reference Design:</b>	Plan #2 (7-31-14)	<b>Offset TVD Reference:</b>	Offset Datum

Offset Design SRC Gilbert 42-14-11NHZ Pad Sec.14-T5N-R66W - SRC Gilbert 42-14-11NHZ - Wellbore #1 - Plan #2													Offset Site Error:	0.0 ft
Survey Program: 0-MWD													Offset Well Error:	0.0 ft
Measured Depth (ft)	Vertical Depth (ft)	Measured Depth (ft)	Vertical Depth (ft)	Reference	Offset	Semi Major Axis	Highside Toolface (°)	Offset Wellbore Centre +N/-S (ft)	+E/-W (ft)	Between Centres (ft)	Between Ellipses (ft)	Minimum Separation (ft)	Separation Factor	Warning
0.0	0.0	0.0	0.0	0.0	0.0	90.46		-0.4	45.1	45.1				
100.0	100.0	100.0	100.0	0.1	0.1	90.46		-0.4	45.1	45.1	44.9	0.22	200.754	
200.0	200.0	200.0	200.0	0.3	0.3	90.46		-0.4	45.1	45.1	44.4	0.67	66.918	
300.0	300.0	300.0	300.0	0.6	0.6	90.46		-0.4	45.1	45.1	44.0	1.12	40.151	
400.0	400.0	400.0	400.0	0.8	0.8	90.46		-0.4	45.1	45.1	43.5	1.57	28.679	
500.0	500.0	500.0	500.0	1.0	1.0	90.46		-0.4	45.1	45.1	43.1	2.02	22.306	
600.0	600.0	600.0	600.0	1.2	1.2	90.46		-0.4	45.1	45.1	42.7	2.47	18.250	
700.0	700.0	700.0	700.0	1.5	1.5	90.46		-0.4	45.1	45.1	42.2	2.92	15.443	
800.0	800.0	800.0	800.0	1.7	1.7	90.46		-0.4	45.1	45.1	41.8	3.37	13.384 CC, ES	
900.0	900.0	900.0	900.0	1.9	1.9	168.12		-0.4	45.1	46.8	43.0	3.81	12.290	
1,000.0	999.8	999.8	999.8	2.1	2.1	169.29		-0.4	45.1	52.0	47.7	4.24	12.255 SF	
1,100.0	1,099.5	1,097.4	1,097.4	2.3	2.3	170.41		-0.1	46.8	62.2	57.5	4.66	13.353	
1,200.0	1,198.7	1,193.7	1,193.5	2.6	2.5	170.99		0.7	51.6	79.1	74.0	5.07	15.599	
1,300.0	1,297.5	1,288.0	1,287.5	2.9	2.8	171.18		2.1	59.4	102.6	97.1	5.49	18.694	
1,400.0	1,395.6	1,379.7	1,378.6	3.2	3.0	171.15		3.9	69.9	132.4	126.5	5.90	22.435	
1,500.0	1,493.3	1,469.0	1,466.9	3.6	3.2	171.05		6.1	82.9	167.2	160.9	6.33	26.411	
1,600.0	1,591.0	1,556.1	1,552.6	4.0	3.5	170.80		8.7	98.2	204.9	198.1	6.77	30.266	
1,700.0	1,688.7	1,641.1	1,635.8	4.4	3.8	170.47		11.6	115.5	245.2	238.0	7.21	34.011	
1,800.0	1,786.4	1,723.9	1,716.2	4.8	4.1	170.12		14.9	134.8	288.2	280.5	7.65	37.650	
1,900.0	1,884.2	1,800.0	1,789.6	5.2	4.4	169.78		18.3	154.5	333.7	325.6	8.09	41.247	
2,000.0	1,981.9	1,882.7	1,868.8	5.7	4.8	169.40		22.3	178.1	381.5	372.9	8.55	44.629	
2,100.0	2,079.6	1,964.3	1,946.3	6.1	5.2	169.05		26.6	203.3	431.3	422.3	9.01	47.867	
2,200.0	2,177.3	2,050.7	2,028.3	6.5	5.7	168.74		31.2	230.2	481.5	472.0	9.48	50.795	
2,300.0	2,275.0	2,137.2	2,110.4	7.0	6.2	168.49		35.8	257.1	531.7	521.7	9.95	53.432	
2,400.0	2,372.7	2,223.7	2,192.4	7.4	6.7	168.28		40.4	284.1	581.8	571.4	10.43	55.799	
2,500.0	2,470.4	2,310.2	2,274.5	7.9	7.2	168.11		44.9	311.0	632.0	621.1	10.91	57.932	
2,600.0	2,568.1	2,396.7	2,356.5	8.4	7.8	167.96		49.5	337.9	682.2	670.8	11.40	59.860	
2,700.0	2,665.8	2,483.2	2,438.6	8.8	8.3	167.84		54.1	364.8	732.4	720.5	11.89	61.609	
2,800.0	2,763.5	2,569.6	2,520.7	9.3	8.9	167.72		58.7	391.8	782.6	770.2	12.38	63.203	
2,900.0	2,861.2	2,656.1	2,602.7	9.7	9.4	167.63		63.3	418.7	832.8	819.9	12.88	64.659	
3,000.0	2,958.9	2,742.6	2,684.8	10.2	10.0	167.54		67.9	445.6	882.9	869.6	13.38	65.995	
3,100.0	3,056.6	2,829.1	2,766.8	10.7	10.5	167.46		72.5	472.5	933.1	919.3	13.88	67.222	
3,200.0	3,154.3	2,915.6	2,848.9	11.1	11.1	167.39		77.1	499.5	983.3	968.9	14.39	68.354	



<b>Company:</b>	Synergy Resources	<b>Local Co-ordinate Reference:</b>	Well SRC Gilbert A-14-11CHZM
<b>Project:</b>	SEC.14-T5N-R66W	<b>TVD Reference:</b>	WELL @ 4847.0ft (RKB-12')
<b>Reference Site:</b>	SRC Gilbert 42-14-11NHZ Pad Sec.14-T5N-R66W	<b>MD Reference:</b>	WELL @ 4847.0ft (RKB-12')
<b>Site Error:</b>	0.0ft	<b>North Reference:</b>	True
<b>Reference Well:</b>	SRC Gilbert A-14-11CHZM	<b>Survey Calculation Method:</b>	Minimum Curvature
<b>Well Error:</b>	0.0ft	<b>Output errors are at</b>	2.00 sigma
<b>Reference Wellbore</b>	Wellbore #1	<b>Database:</b>	Landmark
<b>Reference Design:</b>	Plan #2 (7-31-14)	<b>Offset TVD Reference:</b>	Offset Datum

Offset Design SRC Gilbert 42-14-11NHZ Pad Sec.14-T5N-R66W - SRC Gilbert A-14-11NHZM - Wellbore #1 - Plan #2													Offset Site Error:	0.0 ft
Survey Program: 0-MWD													Offset Well Error:	0.0 ft
Measured Depth (ft)	Vertical Depth (ft)	Measured Depth (ft)	Vertical Depth (ft)	Reference (ft)	Offset (ft)	Highside Toolface (°)	Offset Wellbore Centre +N/-S (ft)	+E/-W (ft)	Between Centres (ft)	Between Ellipses (ft)	Minimum Separation (ft)	Separation Factor	Warning	
0.0	0.0	4.0	4.0	0.0	0.0	-90.01	0.0	-22.3	22.3	22.3	0.00	4,753.693		
100.0	100.0	104.0	104.0	0.1	0.1	-90.01	0.0	-22.3	22.3	22.0	0.23	95.322		
200.0	200.0	204.0	204.0	0.3	0.3	-90.01	0.0	-22.3	22.3	21.6	0.68	32.610		
300.0	300.0	304.0	304.0	0.6	0.6	-90.01	0.0	-22.3	22.3	21.1	1.13	19.670		
400.0	400.0	404.0	404.0	0.8	0.8	-90.01	0.0	-22.3	22.3	20.7	1.58	14.082		
500.0	500.0	504.0	504.0	1.0	1.0	-90.01	0.0	-22.3	22.3	20.3	2.03	10.966		
565.3	565.3	569.3	569.3	1.2	1.2	-90.01	0.0	-22.3	22.3	20.0	2.33	9.582 CC		
600.0	600.0	604.0	604.0	1.2	1.2	-90.01	0.0	-22.3	22.3	19.8	2.48	8.982 ES		
700.0	700.0	703.2	703.1	1.5	1.5	-89.26	0.3	-24.1	24.1	21.2	2.92	8.267		
800.0	800.0	802.1	801.9	1.7	1.7	-87.64	1.2	-29.3	29.4	26.0	3.36	8.762		
900.0	900.0	900.7	900.2	1.9	1.9	-9.12	2.7	-37.8	36.4	32.6	3.78	9.636		
1,000.0	999.8	999.1	997.8	2.1	2.2	-8.47	4.7	-49.6	43.4	39.2	4.19	10.338		
1,100.0	1,099.5	1,097.3	1,094.8	2.3	2.4	-8.21	7.3	-64.7	50.3	45.7	4.62	10.891		
1,200.0	1,198.7	1,195.2	1,191.0	2.6	2.8	-8.20	10.5	-83.0	57.2	52.1	5.05	11.324		
1,300.0	1,297.5	1,292.9	1,286.2	2.9	3.2	-8.34	14.2	-104.5	64.0	58.5	5.49	11.658		
1,400.0	1,395.6	1,390.4	1,380.4	3.2	3.6	-8.60	18.4	-129.1	70.8	64.9	5.95	11.906		
1,500.0	1,493.3	1,489.4	1,475.4	3.6	4.1	-8.88	23.2	-156.5	78.0	71.6	6.44	12.103		
1,600.0	1,591.0	1,589.1	1,571.0	4.0	4.7	-9.11	28.0	-184.3	85.3	78.4	6.96	12.261		
1,700.0	1,688.7	1,688.8	1,666.7	4.4	5.2	-9.30	32.8	-212.2	92.7	85.2	7.48	12.390		
1,800.0	1,786.4	1,788.5	1,762.3	4.8	5.8	-9.47	37.6	-240.0	100.0	92.0	8.02	12.480		
1,900.0	1,884.2	1,888.3	1,857.9	5.2	6.4	-9.61	42.4	-267.8	107.4	98.8	8.56	12.551		
2,000.0	1,981.9	1,988.0	1,953.6	5.7	6.9	-9.73	47.2	-295.7	114.7	105.6	9.10	12.606		
2,100.0	2,079.6	2,087.7	2,049.2	6.1	7.5	-9.84	52.0	-323.5	122.1	112.4	9.65	12.649		
2,200.0	2,177.3	2,187.5	2,144.9	6.5	8.1	-9.94	56.9	-351.3	129.4	119.2	10.21	12.682		
2,300.0	2,275.0	2,287.2	2,240.5	7.0	8.7	-10.02	61.7	-379.2	136.8	126.0	10.76	12.708		
2,400.0	2,372.7	2,386.9	2,336.2	7.4	9.3	-10.10	66.5	-407.0	144.1	132.8	11.32	12.728		
2,500.0	2,470.4	2,486.6	2,431.8	7.9	9.9	-10.17	71.3	-434.8	151.5	139.6	11.89	12.744		
2,600.0	2,568.1	2,586.4	2,527.5	8.4	10.5	-10.24	76.1	-462.7	158.8	146.4	12.45	12.756		
2,700.0	2,665.8	2,686.1	2,623.1	8.8	11.1	-10.29	80.9	-490.5	166.2	153.2	13.02	12.765		
2,800.0	2,763.5	2,785.8	2,718.8	9.3	11.7	-10.35	85.7	-518.3	173.5	159.9	13.59	12.772		
2,900.0	2,861.2	2,885.6	2,814.4	9.7	12.3	-10.39	90.5	-546.2	180.9	166.7	14.16	12.776		
3,000.0	2,958.9	2,985.3	2,910.1	10.2	12.9	-10.44	95.3	-574.0	188.2	173.5	14.73	12.780		
3,100.0	3,056.6	3,085.0	3,005.7	10.7	13.5	-10.48	100.1	-601.8	195.6	180.3	15.30	12.782		
3,200.0	3,154.3	3,184.8	3,101.3	11.1	14.1	-10.52	104.9	-629.7	202.9	187.1	15.87	12.783		
3,300.0	3,252.0	3,284.5	3,197.0	11.6	14.7	-10.56	109.8	-657.5	210.3	193.8	16.45	12.783		
3,400.0	3,349.7	3,384.2	3,292.6	12.0	15.3	-10.59	114.6	-685.3	217.6	200.6	17.02	12.783		
3,500.0	3,447.4	3,483.9	3,388.3	12.5	15.9	-10.62	119.4	-713.2	225.0	207.4	17.60	12.782		
3,600.0	3,545.1	3,583.7	3,483.9	13.0	16.5	-10.65	124.2	-741.0	232.3	214.1	18.18	12.781		
3,700.0	3,642.8	3,683.4	3,579.6	13.4	17.1	-10.68	129.0	-768.8	239.7	220.9	18.76	12.779		
3,800.0	3,740.5	3,783.1	3,675.2	13.9	17.7	-10.70	133.8	-796.7	247.0	227.7	19.33	12.777		
3,900.0	3,838.2	3,882.9	3,770.9	14.4	18.3	-10.73	138.6	-824.5	254.4	234.5	19.91	12.775		
4,000.0	3,935.9	3,982.6	3,866.5	14.8	18.9	-10.75	143.4	-852.3	261.7	241.2	20.49	12.773		
4,100.0	4,033.6	4,082.3	3,962.2	15.3	19.5	-10.77	148.2	-880.2	269.1	248.0	21.07	12.771		
4,200.0	4,131.4	4,182.0	4,057.8	15.8	20.1	-10.79	153.0	-908.0	276.4	254.8	21.65	12.768		
4,300.0	4,229.1	4,281.8	4,153.5	16.2	20.7	-10.81	157.9	-935.8	283.8	261.6	22.23	12.765		
4,400.0	4,326.8	4,381.5	4,249.1	16.7	21.3	-10.83	162.7	-963.7	291.1	268.3	22.81	12.763		
4,500.0	4,424.5	4,481.2	4,344.7	17.2	21.9	-10.85	167.5	-991.5	298.5	275.1	23.39	12.760		
4,600.0	4,522.2	4,581.0	4,440.4	17.6	22.5	-10.86	172.3	-1,019.3	305.8	281.9	23.97	12.757		
4,700.0	4,619.9	4,680.7	4,536.0	18.1	23.1	-10.88	177.1	-1,047.2	313.2	288.6	24.56	12.754		
4,800.0	4,717.6	4,780.4	4,631.7	18.6	23.7	-10.90	181.9	-1,075.0	320.5	295.4	25.14	12.752		
4,900.0	4,815.3	4,880.2	4,727.3	19.0	24.3	-10.91	186.7	-1,102.8	327.9	302.2	25.72	12.749		

CC - Min centre to center distance or convergent point, SF - min separation factor, ES - min ellipse separation



Offset Design												Offset Site Error:		0.0 ft
Survey Program: 0-MWD												Offset Well Error:		0.0 ft
Reference		Offset		Semi Major Axis			Distance					Warning		
Measured Depth	Vertical Depth	Measured Depth	Vertical Depth	Reference	Offset	Highside Toolface	Offset Wellbore Centre		Between Centres	Between Ellipses	Minimum Separation		Separation Factor	
(ft)	(ft)	(ft)	(ft)	(ft)	(ft)	(°)	+N/-S (ft)	+E/-W (ft)	(ft)	(ft)	(ft)			
5,000.0	4,913.0	4,979.9	4,823.0	19.5	24.9	-10.92	191.5	-1,130.6	335.2	308.9	26.30	12.746		
5,100.0	5,010.7	5,079.6	4,918.6	20.0	25.5	-10.94	196.3	-1,158.5	342.6	315.7	26.88	12.743		
5,200.0	5,108.4	5,179.3	5,014.3	20.4	26.1	-10.95	201.1	-1,186.3	349.9	322.5	27.47	12.741		
5,300.0	5,206.1	5,279.1	5,109.9	20.9	26.7	-10.96	206.0	-1,214.1	357.3	329.2	28.05	12.738		
5,400.0	5,303.8	5,378.8	5,205.6	21.4	27.3	-10.97	210.8	-1,242.0	364.6	336.0	28.63	12.735		
5,500.0	5,401.5	5,478.5	5,301.2	21.9	27.9	-10.98	215.6	-1,269.8	372.0	342.8	29.22	12.733		
5,600.0	5,499.2	5,578.3	5,396.8	22.3	28.5	-11.00	220.4	-1,297.6	379.3	349.5	29.80	12.730		
5,700.0	5,596.9	5,678.0	5,492.5	22.8	29.1	-11.01	225.2	-1,325.5	386.7	356.3	30.38	12.727		
5,800.0	5,694.6	5,777.7	5,588.1	23.3	29.7	-11.02	230.0	-1,353.3	394.0	363.1	30.97	12.725		
5,900.0	5,792.3	5,893.4	5,699.7	23.7	30.3	-11.07	235.2	-1,383.4	399.4	367.9	31.56	12.657		
6,000.0	5,890.0	6,009.4	5,812.7	24.2	30.7	-11.23	239.6	-1,409.1	400.8	368.7	32.14	12.470		
6,100.0	5,987.7	6,125.4	5,926.7	24.7	31.1	-11.48	243.3	-1,430.2	398.2	365.5	32.72	12.170		
6,200.0	6,085.8	6,241.0	6,041.1	25.1	31.4	-11.76	246.2	-1,446.8	393.2	360.0	33.23	11.832		
6,300.0	6,184.4	6,356.4	6,155.8	25.3	31.6	-12.03	248.2	-1,458.8	387.7	354.0	33.66	11.517		
6,400.0	6,283.6	6,471.4	6,270.6	25.6	31.8	-12.29	249.5	-1,466.2	381.6	347.6	34.02	11.217		
6,500.0	6,383.2	6,586.1	6,385.3	25.8	31.9	-12.54	250.0	-1,469.0	375.0	340.7	34.32	10.927		
6,600.0	6,483.0	6,687.9	6,487.0	26.0	32.0	-12.71	250.0	-1,469.0	369.3	334.8	34.54	10.694		
6,700.0	6,583.0	6,787.8	6,587.0	26.1	32.1	-12.73	250.3	-1,469.0	367.0	332.4	34.69	10.582		
6,740.6	6,623.5	6,828.2	6,627.3	26.1	32.2	-12.36	252.7	-1,469.0	366.9	332.1	34.75	10.558		
6,800.0	6,683.0	6,886.7	6,685.2	26.2	32.3	-88.41	260.2	-1,469.0	367.1	332.4	34.74	10.568		
6,900.0	6,782.9	6,981.6	6,777.5	26.3	32.4	-85.16	282.3	-1,469.0	368.4	333.6	34.74	10.605		
7,000.0	6,881.9	7,073.5	6,863.3	26.5	32.6	-81.80	315.2	-1,469.0	371.0	335.9	35.03	10.589		
7,100.0	6,977.9	7,163.2	6,942.2	26.7	32.8	-78.65	357.5	-1,469.0	374.6	339.1	35.55	10.538		
7,200.0	7,069.1	7,250.0	7,013.1	27.0	33.0	-75.80	407.6	-1,469.0	379.0	342.8	36.16	10.480		
7,300.0	7,153.7	7,336.8	7,077.3	27.3	33.3	-73.21	465.9	-1,469.0	383.8	347.0	36.83	10.420		
7,400.0	7,230.2	7,421.4	7,132.7	27.6	33.6	-70.97	529.8	-1,469.0	388.7	351.1	37.58	10.342		
7,500.0	7,296.9	7,504.8	7,179.5	28.1	34.0	-69.08	598.7	-1,469.0	393.3	354.8	38.53	10.208		
7,600.0	7,352.6	7,587.2	7,217.7	28.6	34.5	-67.54	671.8	-1,469.0	397.4	357.5	39.84	9.975		
7,700.0	7,396.3	7,669.0	7,247.0	29.3	34.9	-66.37	748.0	-1,469.0	400.7	359.1	41.68	9.616		
7,800.0	7,427.0	7,750.0	7,267.2	30.1	35.5	-65.56	826.4	-1,469.0	403.2	359.0	44.14	9.135		
7,900.0	7,444.2	7,831.1	7,278.5	31.0	36.1	-65.12	906.7	-1,469.0	404.6	357.3	47.24	8.563		
8,000.0	7,448.0	7,916.8	7,281.0	31.9	36.8	-65.02	992.4	-1,469.0	404.9	354.3	50.56	8.008		
8,100.0	7,448.0	8,016.8	7,281.0	33.0	37.7	-65.02	1,092.4	-1,469.0	404.9	351.7	53.17	7.615		
8,200.0	7,448.0	8,116.8	7,281.0	34.2	38.7	-65.02	1,192.4	-1,469.0	404.9	349.0	55.88	7.246		
8,300.0	7,448.0	8,216.8	7,281.0	35.4	39.8	-65.02	1,292.4	-1,469.0	404.9	346.2	58.67	6.900		
8,400.0	7,448.0	8,316.8	7,281.0	36.7	40.9	-65.02	1,392.4	-1,469.0	404.9	343.3	61.55	6.578		
8,500.0	7,448.0	8,416.8	7,281.0	38.1	42.1	-65.02	1,492.4	-1,469.0	404.9	340.4	64.49	6.278		
8,600.0	7,448.0	8,516.8	7,281.0	39.5	43.3	-65.02	1,592.4	-1,469.0	404.9	337.4	67.48	6.000		
8,700.0	7,448.0	8,616.8	7,281.0	40.9	44.6	-65.02	1,692.4	-1,469.0	404.9	334.3	70.53	5.740		
8,800.0	7,448.0	8,716.8	7,281.0	42.4	46.0	-65.02	1,792.4	-1,469.0	404.9	331.3	73.62	5.499		
8,900.0	7,448.0	8,816.8	7,281.0	43.9	47.4	-65.02	1,892.4	-1,469.0	404.9	328.1	76.75	5.275		
9,000.0	7,448.0	8,916.8	7,281.0	45.5	48.8	-65.02	1,992.4	-1,469.0	404.9	325.0	79.91	5.066		
9,100.0	7,448.0	9,016.8	7,281.0	47.1	50.3	-65.02	2,092.4	-1,469.0	404.9	321.8	83.11	4.872		
9,200.0	7,448.0	9,116.8	7,281.0	48.7	51.8	-65.02	2,192.4	-1,469.0	404.9	318.5	86.33	4.690		
9,300.0	7,448.0	9,216.8	7,281.0	50.3	53.3	-65.02	2,292.4	-1,469.0	404.9	315.3	89.57	4.520		
9,400.0	7,448.0	9,316.8	7,281.0	52.0	54.9	-65.02	2,392.4	-1,469.0	404.9	312.0	92.84	4.361		
9,500.0	7,448.0	9,416.8	7,281.0	53.6	56.4	-65.02	2,492.4	-1,469.0	404.9	308.8	96.12	4.212		
9,600.0	7,448.0	9,516.8	7,281.0	55.3	58.0	-65.02	2,592.4	-1,469.0	404.9	305.4	99.42	4.072		
9,700.0	7,448.0	9,616.8	7,281.0	57.0	59.7	-65.02	2,692.4	-1,469.0	404.9	302.1	102.74	3.941		
9,800.0	7,448.0	9,716.8	7,281.0	58.7	61.3	-65.02	2,792.4	-1,469.0	404.9	298.8	106.07	3.817		
9,900.0	7,448.0	9,816.8	7,281.0	60.5	63.0	-65.02	2,892.4	-1,469.0	404.9	295.5	109.42	3.700		

<b>Company:</b>	Synergy Resources	<b>Local Co-ordinate Reference:</b>	Well SRC Gilbert A-14-11CHZM
<b>Project:</b>	SEC.14-T5N-R66W	<b>TVD Reference:</b>	WELL @ 4847.0ft (RKB-12')
<b>Reference Site:</b>	SRC Gilbert 42-14-11NHZ Pad Sec.14-T5N-R66W	<b>MD Reference:</b>	WELL @ 4847.0ft (RKB-12')
<b>Site Error:</b>	0.0ft	<b>North Reference:</b>	True
<b>Reference Well:</b>	SRC Gilbert A-14-11CHZM	<b>Survey Calculation Method:</b>	Minimum Curvature
<b>Well Error:</b>	0.0ft	<b>Output errors are at</b>	2.00 sigma
<b>Reference Wellbore</b>	Wellbore #1	<b>Database:</b>	Landmark
<b>Reference Design:</b>	Plan #2 (7-31-14)	<b>Offset TVD Reference:</b>	Offset Datum

Offset Design SRC Gilbert 42-14-11NHZ Pad Sec.14-T5N-R66W - SRC Gilbert A-14-11NHZM - Wellbore #1 - Plan #2													Offset Site Error:	0.0 ft
Survey Program: 0-MWD													Offset Well Error:	0.0 ft
Measured Depth (ft)	Vertical Depth (ft)	Measured Depth (ft)	Vertical Depth (ft)	Reference	Offset	Semi Major Axis	Highside Toolface (°)	Offset Wellbore Centre +N/-S (ft)	Offset Wellbore Centre +E/-W (ft)	Between Centres (ft)	Between Ellipses (ft)	Minimum Separation (ft)	Separation Factor	Warning
10,000.0	7,448.0	9,916.8	7,281.0	62.2	64.6	-65.02	-65.02	2,992.4	-1,469.0	404.9	292.1	112.78	3.590	
10,100.0	7,448.0	10,016.8	7,281.0	64.0	66.3	-65.02	-65.02	3,092.4	-1,469.0	404.9	288.7	116.14	3.486	
10,200.0	7,448.0	10,116.8	7,281.0	65.7	68.0	-65.02	-65.02	3,192.4	-1,469.0	404.9	285.4	119.52	3.387	
10,300.0	7,448.0	10,216.8	7,281.0	67.5	69.7	-65.02	-65.02	3,292.4	-1,469.0	404.9	282.0	122.91	3.294	
10,400.0	7,448.0	10,316.8	7,281.0	69.3	71.4	-65.02	-65.02	3,392.4	-1,469.0	404.9	278.6	126.30	3.206	
10,500.0	7,448.0	10,416.8	7,281.0	71.1	73.2	-65.02	-65.02	3,492.4	-1,469.0	404.9	275.2	129.70	3.122	
10,600.0	7,448.0	10,516.8	7,281.0	72.9	74.9	-65.02	-65.02	3,592.4	-1,469.0	404.9	271.8	133.11	3.042	
10,700.0	7,448.0	10,616.8	7,281.0	74.7	76.7	-65.02	-65.02	3,692.4	-1,469.0	404.9	268.3	136.53	2.965	
10,800.0	7,448.0	10,716.8	7,281.0	76.5	78.4	-65.02	-65.02	3,792.4	-1,469.0	404.9	264.9	139.95	2.893	
10,900.0	7,448.0	10,816.8	7,281.0	78.3	80.2	-65.02	-65.02	3,892.4	-1,469.0	404.9	261.5	143.38	2.824	
11,000.0	7,448.0	10,916.8	7,281.0	80.1	82.0	-65.02	-65.02	3,992.4	-1,469.0	404.9	258.1	146.81	2.758	
11,100.0	7,448.0	11,016.8	7,281.0	81.9	83.8	-65.02	-65.02	4,092.4	-1,469.0	404.9	254.6	150.25	2.695	
11,200.0	7,448.0	11,116.8	7,281.0	83.8	85.5	-65.02	-65.02	4,192.4	-1,469.0	404.9	251.2	153.69	2.634	
11,300.0	7,448.0	11,216.8	7,281.0	85.6	87.3	-65.02	-65.02	4,292.4	-1,469.0	404.9	247.7	157.14	2.577	
11,400.0	7,448.0	11,316.8	7,281.0	87.4	89.1	-65.02	-65.02	4,392.4	-1,469.0	404.9	244.3	160.59	2.521	
11,500.0	7,448.0	11,416.8	7,281.0	89.3	90.9	-65.02	-65.02	4,492.4	-1,469.0	404.9	240.8	164.04	2.468	
11,600.0	7,448.0	11,516.8	7,281.0	91.1	92.7	-65.02	-65.02	4,592.4	-1,469.0	404.9	237.4	167.50	2.417	
11,700.0	7,448.0	11,616.8	7,281.0	92.9	94.6	-65.02	-65.02	4,692.4	-1,469.0	404.9	233.9	170.96	2.368	
11,800.0	7,448.0	11,716.8	7,281.0	94.8	96.4	-65.02	-65.02	4,792.4	-1,469.0	404.9	230.5	174.42	2.321	
11,900.0	7,448.0	11,816.8	7,281.0	96.6	98.2	-65.02	-65.02	4,892.4	-1,469.0	404.9	227.0	177.89	2.276	
12,000.0	7,448.0	11,916.8	7,281.0	98.5	100.0	-65.02	-65.02	4,992.4	-1,469.0	404.9	223.5	181.36	2.232	
12,100.0	7,448.0	12,016.8	7,281.0	100.4	101.9	-65.02	-65.02	5,092.4	-1,469.0	404.9	220.0	184.83	2.191	
12,200.0	7,448.0	12,116.8	7,281.0	102.2	103.7	-65.02	-65.02	5,192.4	-1,469.0	404.9	216.6	188.30	2.150	
12,300.0	7,448.0	12,216.8	7,281.0	104.1	105.5	-65.02	-65.02	5,292.4	-1,469.0	404.9	213.1	191.78	2.111	
12,400.0	7,448.0	12,316.8	7,281.0	105.9	107.4	-65.02	-65.02	5,392.4	-1,469.0	404.9	209.6	195.26	2.074	
12,500.0	7,448.0	12,416.8	7,281.0	107.8	109.2	-65.02	-65.02	5,492.4	-1,469.0	404.9	206.1	198.74	2.037	
12,600.0	7,448.0	12,516.8	7,281.0	109.7	111.0	-65.02	-65.02	5,592.4	-1,469.0	404.9	202.7	202.22	2.002	
12,700.0	7,448.0	12,616.8	7,281.0	111.5	112.9	-65.02	-65.02	5,692.4	-1,469.0	404.9	199.2	205.71	1.968	
12,800.0	7,448.0	12,716.8	7,281.0	113.4	114.7	-65.02	-65.02	5,792.4	-1,469.0	404.9	195.7	209.19	1.935	
12,900.0	7,448.0	12,816.8	7,281.0	115.3	116.6	-65.02	-65.02	5,892.4	-1,469.0	404.9	192.2	212.68	1.904	
13,000.0	7,448.0	12,916.8	7,281.0	117.2	118.5	-65.02	-65.02	5,992.4	-1,469.0	404.9	188.7	216.17	1.873	
13,100.0	7,448.0	13,016.8	7,281.0	119.0	120.3	-65.02	-65.02	6,092.4	-1,469.0	404.9	185.2	219.66	1.843	
13,200.0	7,448.0	13,116.8	7,281.0	120.9	122.2	-65.02	-65.02	6,192.4	-1,469.0	404.9	181.7	223.16	1.814	
13,300.0	7,448.0	13,216.8	7,281.0	122.8	124.0	-65.02	-65.02	6,292.4	-1,469.0	404.9	178.2	226.65	1.786	
13,400.0	7,448.0	13,316.8	7,281.0	124.7	125.9	-65.02	-65.02	6,392.4	-1,469.0	404.9	174.7	230.14	1.759	
13,500.0	7,448.0	13,416.8	7,281.0	126.5	127.8	-65.02	-65.02	6,492.4	-1,469.0	404.9	171.2	233.64	1.733	
13,600.0	7,448.0	13,516.8	7,281.0	128.4	129.6	-65.02	-65.02	6,592.4	-1,469.0	404.9	167.7	237.14	1.707	
13,700.0	7,448.0	13,616.8	7,281.0	130.3	131.5	-65.02	-65.02	6,692.4	-1,469.0	404.9	164.2	240.64	1.682	
13,800.0	7,448.0	13,716.8	7,281.0	132.2	133.4	-65.02	-65.02	6,792.4	-1,469.0	404.9	160.7	244.14	1.658	
13,900.0	7,448.0	13,816.8	7,281.0	134.1	135.2	-65.02	-65.02	6,892.4	-1,469.0	404.9	157.2	247.64	1.635	
14,000.0	7,448.0	13,916.8	7,281.0	136.0	137.1	-65.02	-65.02	6,992.4	-1,469.0	404.9	153.7	251.14	1.612	
14,100.0	7,448.0	14,016.8	7,281.0	137.9	139.0	-65.02	-65.02	7,092.4	-1,469.0	404.9	150.2	254.64	1.590	
14,200.0	7,448.0	14,116.8	7,281.0	139.7	140.8	-65.02	-65.02	7,192.4	-1,469.0	404.9	146.7	258.15	1.568	
14,300.0	7,448.0	14,216.8	7,281.0	141.6	142.7	-65.02	-65.02	7,292.4	-1,469.0	404.9	143.2	261.65	1.547	
14,400.0	7,448.0	14,316.8	7,281.0	143.5	144.6	-65.02	-65.02	7,392.4	-1,469.0	404.9	139.7	265.16	1.527	
14,500.0	7,448.0	14,416.8	7,281.0	145.4	146.5	-65.02	-65.02	7,492.4	-1,469.0	404.9	136.2	268.67	1.507	
14,600.0	7,448.0	14,516.8	7,281.0	147.3	148.4	-65.02	-65.02	7,592.4	-1,469.0	404.9	132.7	272.17	1.488 Level 3	
14,700.0	7,448.0	14,616.8	7,281.0	149.2	150.2	-65.02	-65.02	7,692.4	-1,469.0	404.9	129.2	275.68	1.469 Level 3	
14,800.0	7,448.0	14,716.8	7,281.0	151.1	152.1	-65.02	-65.02	7,792.4	-1,469.0	404.9	125.7	279.19	1.450 Level 3	
14,832.7	7,448.0	14,749.5	7,281.0	151.7	152.7	-65.02	-65.02	7,825.0	-1,469.0	404.9	124.5	280.34	1.444 Level 3	
14,886.7	7,448.0	14,768.5	7,281.0	152.7	153.1	-65.02	-65.02	7,844.1	-1,469.0	406.4	124.8	281.62	1.443 Level 3, SF	

CC - Min centre to center distance or convergent point, SF - min separation factor, ES - min ellipse separation

<b>Company:</b>	Synergy Resources	<b>Local Co-ordinate Reference:</b>	Well SRC Gilbert A-14-11CHZM
<b>Project:</b>	SEC.14-T5N-R66W	<b>TVD Reference:</b>	WELL @ 4847.0ft (RKB-12')
<b>Reference Site:</b>	SRC Gilbert 42-14-11NHZ Pad Sec.14-T5N-R66W	<b>MD Reference:</b>	WELL @ 4847.0ft (RKB-12')
<b>Site Error:</b>	0.0ft	<b>North Reference:</b>	True
<b>Reference Well:</b>	SRC Gilbert A-14-11CHZM	<b>Survey Calculation Method:</b>	Minimum Curvature
<b>Well Error:</b>	0.0ft	<b>Output errors are at</b>	2.00 sigma
<b>Reference Wellbore</b>	Wellbore #1	<b>Database:</b>	Landmark
<b>Reference Design:</b>	Plan #2 (7-31-14)	<b>Offset TVD Reference:</b>	Offset Datum

Reference Depths are relative to WELL @ 4847.0ft (RKB-12')

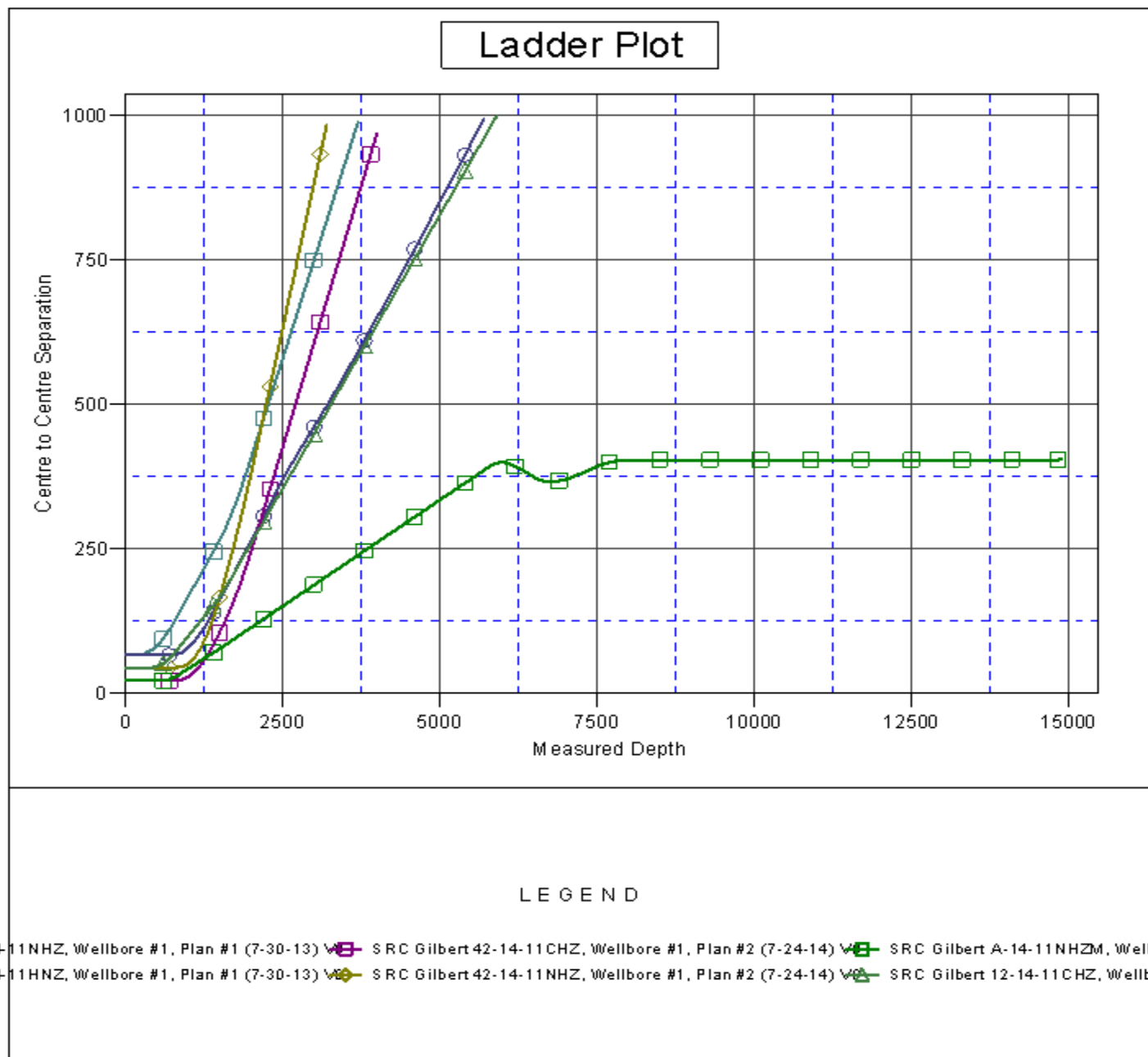
Offset Depths are relative to Offset Datum

Central Meridian is -105.500000 °

Coordinates are relative to: SRC Gilbert A-14-11CHZM

Coordinate System is US State Plane 1983, Colorado Northern Zone

Grid Convergence at Surface is: 0.49°



<b>Company:</b>	Synergy Resources	<b>Local Co-ordinate Reference:</b>	Well SRC Gilbert A-14-11CHZM
<b>Project:</b>	SEC.14-T5N-R66W	<b>TVD Reference:</b>	WELL @ 4847.0ft (RKB-12')
<b>Reference Site:</b>	SRC Gilbert 42-14-11NHZ Pad Sec.14-T5N-R66W	<b>MD Reference:</b>	WELL @ 4847.0ft (RKB-12')
<b>Site Error:</b>	0.0ft	<b>North Reference:</b>	True
<b>Reference Well:</b>	SRC Gilbert A-14-11CHZM	<b>Survey Calculation Method:</b>	Minimum Curvature
<b>Well Error:</b>	0.0ft	<b>Output errors are at</b>	2.00 sigma
<b>Reference Wellbore</b>	Wellbore #1	<b>Database:</b>	Landmark
<b>Reference Design:</b>	Plan #2 (7-31-14)	<b>Offset TVD Reference:</b>	Offset Datum

Reference Depths are relative to WELL @ 4847.0ft (RKB-12')  
Offset Depths are relative to Offset Datum  
Central Meridian is -105.500000 °

Coordinates are relative to: SRC Gilbert A-14-11CHZM  
Coordinate System is US State Plane 1983, Colorado Northern Zone  
Grid Convergence at Surface is: 0.49°

